


Wetland Name	Time of Wetland Impact	Vegetative Community	Description	Acreage
3	Phase 2	630	Mixed Forested Wetland	1.06
7	Phase 2	211w	Improved Pasture - Wetland	0.55
8	Phase 2	211w	Improved Pasture - Wetland	1.65
8	Future	211w	Improved Pasture - Wetland	1.00
9	Phase 2	211w	Improved Pasture - Wetland	0.34
9	Phase 2	621	Cypress Dome	0.42
10	Phase 2	211w	Improved Pasture - Wetland	0.05
11	Phase 2	211w	Improved Pasture - Wetland	0.87
11	Future	211w	Improved Pasture - Wetland	4.36
19	Phase 2	621	Cypress Dome	1.19
19	Phase 2	211w	Improved Pasture - Wetland	0.38
SW1	Phase 2	510	Ditch	0.18
SW2	Phase 2	510	Ditch	0.11
SW2	Future	510	Ditch	0.04

### Legend


 New Phase 2 Boundary 46.10 acres

 Jurisdictional Wetland Line


Vegetative Community of Wetlands and the Time of Impact


 211w - Phase 2

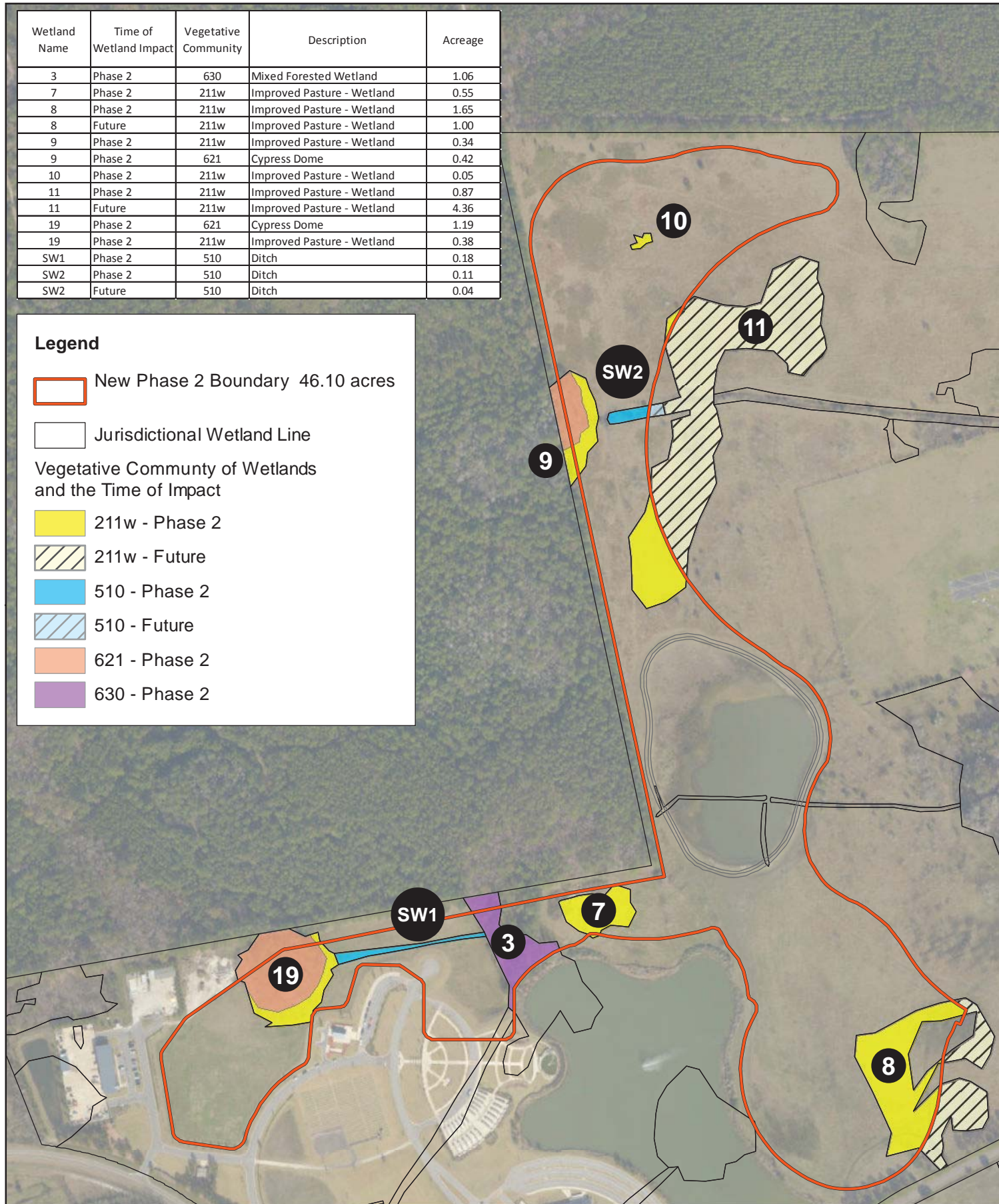
 211w - Future

 510 - Phase 2

 510 - Future

 621 - Phase 2

 630 - Phase 2



0 400  
Feet



**FOR REVIEW**

**AECOM**

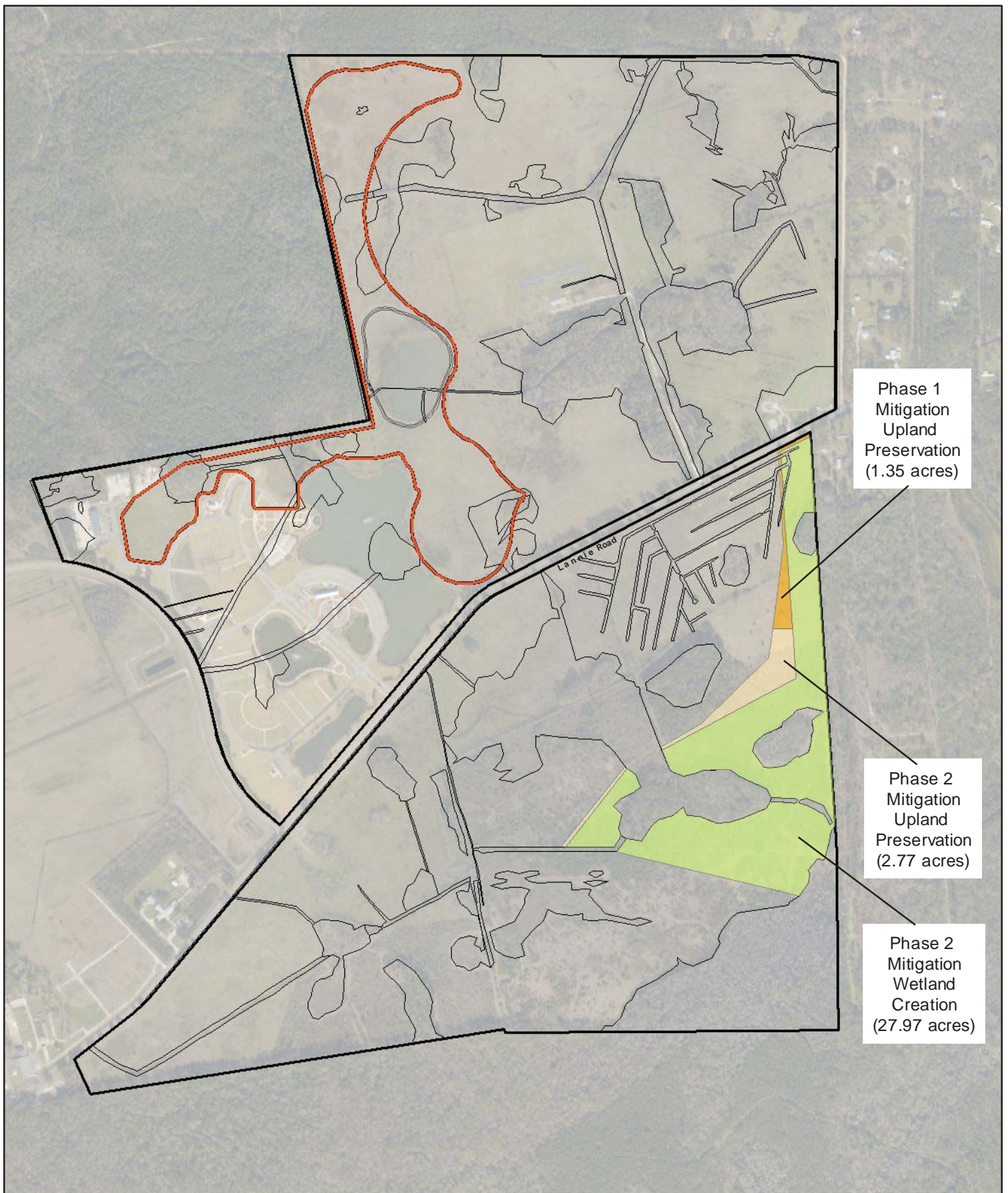
Job: #60543252

Date: 1/25/18

Source: Esri Bse Map and Previous Permits

Figure 1  
Preliminary Wetlands to be Impacted in Phase 2 or Future  
Jacksonville National Cemetery

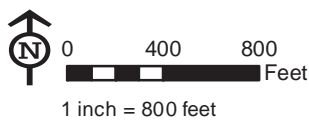




Phase 1  
Mitigation  
Upland  
Preservation  
(1.35 acres)

Phase 2  
Mitigation  
Upland  
Preservation  
(2.77 acres)

Phase 2  
Mitigation  
Wetland  
Creation  
(27.97 acres)



Legend	
	Jacksonville National Cemetery
	Phase 2 Boundary 46.10 acres
	Phase 1 Mitigation - Upland Preservation
	Phase 2 Mitigation - Upland Preservation
	Phase 2 Mitigation - Wetland Creation
	Jurisdictional Wetland Line

**Figure X: Phase 2 On-Site Mitigation**  
 Supplemental Environmental Assessment  
**U.S. Department of Veterans Affairs**  
**Jacksonville National Cemetery Expansion**  
 4083 Lannie Road Jacksonville, FL 32218 (Duval County)