

9/22/2017 3:50:54 PM
C:\Local Revit Files\VA 246 14R 0013_AS 15_BChompas.rvt
one eighth inch = one foot
one quarter inch = one foot
three eighths inch = one foot
one half inch = one foot
one inch = one foot
one and one half inch = one foot
three inch = one foot

Sheet List			
NUMBER	NAME	Design Development 35%	Design Development 65%
GENERAL			
G-000	COVER	•	•
G-001	SHEET INDEX AND PROJECT DATA	•	•
LIFE SAFETY			
LS-100	LIFE SAFETY - SMOKE COMPARTMENT PLAN	•	•
LS-101	LIFE SAFETY - OCCUPANCY PLAN	•	•
CIVIL			
C-101	CIVIL DOCUMENTS COVER SHEET		•
C-102	GENERAL AND SPECIFIC CONSTRUCTION NOTES		•
C-103	EXISTING CONDITIONS PLAN		•
C-201	SITE AND GRADING PLAN		•
C-202	SITE DETAILS		•
C-301	LANDSCAPE / HARDSCAPE PLAN AND DETAILS	•	•
C-401	EROSION AND SEDIMENT CONTROL AND STORMWATER MANAGEMENT COVER SHEET		•
C-402	EROSION AND SEDIMENT CONTROL DEMOLITION PLAN		•
C-403	EROSION AND SEDIMENT CONTROL SITE PLAN		•
C-404	EROSION AND SEDIMENT CONTROL NOTES		•
C-405	EROSION AND SEDIMENT CONTROL DETAILS	•	•
C-501	STORMWATER MANAGEMENT PLAN		•
C-502	PROPOSED DRAINAGE AREA MAP		•
C-503	STORM DRAIN PROFILES AND COMPUTATIONS	•	•
C-504	STORMWATER MANAGEMENT COMPUTATIONS	•	•
C-505	STORMWATER MANAGEMENT COMPUTATIONS AND DETAILS		•
C-506	OFFSITE DRAINAGE AREA MAP		•
C-601	UTILITY PLAN AND STRUCTURE DETAILS		•
C-602	UTILITIES PLAN DETAILS		•
C-603	UTILITIES PLAN DETAILS		•
C-604	UTILITIES PLAN DETAILS		•
STRUCTURAL			
S-001	STRUCTURAL NOTES AND ABBREVIATIONS	•	•
S-002	SPECIAL INSPECTIONS		•
S-003	LIVE LOAD DIAGRAMS		•
S-004	FUTURE LIVE LOAD DIAGRAMS		•
S-005	SLAB REINFORCING PLAN		•
S-101a	LEVEL 1 FOUNDATION AND FRAMING PLAN - PART A	•	•
S-101b	LEVEL 1 FOUNDATION PLAN - PART B	•	•
S-102a	ROOF FRAMING PLAN - PART A	•	•
S-102b	ROOF FRAMING PLAN - PART B	•	•
S-103a	INTERSTITIAL FRAMING PLAN - PART A		•
S-103b	INTERSTITIAL FRAMING PLAN - PART B		•
S-104	DEDUCT ALTERNATE #11		•
S-201	TYPICAL FOUNDATION DETAILS	•	•
S-202	FOUNDATION DETAILS	•	•
S-203	FOUNDATION DETAILS		•
S-301	COLUMN SCHEDULE AND TYPICAL FRAMING DETAILS	•	•
S-302	BRACED FRAME ELEVATIONS AND DETAILS	•	•
S-303	FRAMING DETAILS	•	•
S-304	FRAMING DETAILS		•
S-305	FRAMING DETAILS		•
ARCHITECTURAL DEMOLITION			
AD-101a	LEVEL 1 DEMOLITION FLOOR PLAN AND ELEVATION	•	•
AP-150	CONSTRUCTION PHASING PLAN		•
ARCHITECTURAL SITE PLAN			
AS-100	ARCHITECTURAL SITE PLAN	•	•
ARCHITECTURAL			
A-000	ABBREVIATIONS & SYMBOLS	•	•
A-101	OVERALL FLOOR PLAN		•
A-101a	LEVEL 1 CONSTRUCTION PLAN - KNUCKLE	•	•
A-101b	LEVEL 1 CONSTRUCTION PLAN - EAST HOUSE	•	•
A-102	INTERSTITIAL FLOOR PLAN		•
A-110	ROOF CONSTRUCTION PLAN	•	•
A-120	SLAB DEPRESSION PLAN		•
A-121a	LEVEL 1 DIMENSION PLAN - KNUCKLE		•
A-121b	LEVEL 1 DIMENSION PLAN - EAST HOUSE		•
A-151a	LEVEL 1 REFLECTED CEILING PLAN - KNUCKLE		•
A-151b	LEVEL 1 REFLECTED CEILING PLAN - EAST HOUSE		•
A-160	RCP ENLARGED PLANS AND DETAILS		•
A-200	EXTERIOR ELEVATIONS	•	•
A-300	BUILDING SECTIONS	•	•
A-301	BUILDING SECTIONS - ELEV. & STAIR		•
A-350	WALL SECTIONS - KNUCKLE	•	•
A-351	WALL SECTIONS - KNUCKLE		•
A-352	WALL SECTIONS - KNUCKLE		•
A-353	WALL SECTIONS - EAST HOUSE		•
A-354	WALL SECTIONS - EAST HOUSE		•
A-400	INTERIOR ELEVATIONS - KNUCKLE	•	•
A-401	INTERIOR ELEVATIONS - HOUSE ENTRY		•
A-402	INTERIOR ELEVATIONS - HOUSE PUBLIC		•
A-403	INTERIOR ELEVATIONS - RESIDENT WING		•
A-404	INTERIOR ELEVATIONS - TOILETS		•
A-500	PLAN DETAILS		•
A-501	PLAN DETAILS		•
A-502	DOOR AND WINDOW DETAILS		•
A-510	SECTION DETAILS		•
A-511	SECTION DETAILS		•
A-512	SECTION DETAILS		•

Sheet List			
NUMBER	NAME	Design Development 35%	Design Development 65%
A-520	MISC. INTERIOR DETAILS	•	•
A-600	EXTERIOR BUILDING SYSTEMS		•
A-605	INTERIOR PARTITION TYPES AND DETAILS		•
A-610	DOOR SCHEDULE, TYPES AND DETAILS		•
A-620	WINDOW SCHEDULE, TYPES AND DETAILS		•
A-800	CASEWORK DETAILS		•
A-801	CASEWORK DETAILS		•
A-900	DEDUCT ALTERNATE #14 - FOOTPRINT REDUCTION - FLOOR PLAN AND RCP		•
A-901	DEDUCT ALTERNATE #14 - FOOTPRINT REDUCTION - EXTERIOR ELEVATIONS AND SECTIONS		•
A-902	DEDUCT ALTERNATE #7 & #8 - PLANS AND ELEVATIONS		•
INTERIORS			
I-101a	INTERIOR FINISH PLAN - KNUCKLE	•	•
I-101b	INTERIOR FINISH PLAN - EAST HOUSE	•	•
I-201a	FLOOR PATTERN PLAN - LEVEL 1 - KNUCKLE	•	•
I-201b	FLOOR PATTERN PLAN - LEVEL 1 - EAST HOUSE	•	•
I-400a	INTERIOR ROOM FINISH SCHEDULE	•	•
I-400b	INTERIOR ROOM FINISH SCHEDULE 2	•	•
I-401	MATERIALS LIST	•	•
FIRE PROTECTION			
FP001	FIRE PROTECTION DETAILS		•
FP101	LEVEL 1 FIRE PROTECTION PLAN - KNUCKLE		•
FP102	LEVEL 1 FIRE PROTECTION PLAN - EAST HOUSE		•
FP201	INTERSTITIAL FIRE PROTECTION PLAN - KNUCKLE		•
FP202	INTERSTITIAL FIRE PROTECTION PLAN - EAST HOUSE		•
MECHANICAL			
MQ001	MECHANICAL NOTES & ABBREVIATIONS		•
MQ002	MECHANICAL SCHEDULES - AIR SIDE		•
MQ003	MECHANICAL SCHEDULES - WATER SIDE		•
MQ004	MECHANICAL DETAILS - AIR SIDE		•
MQ005	MECHANICAL DETAILS - AIR SIDE		•
MQ006	MECHANICAL DETAILS - WATER SIDE		•
MQ007	MECHANICAL DETAILS - WATER SIDE		•
MQ008	MECHANICAL DETAILS - SEQUENCE OF OPERATION		•
MQ009	MECHANICAL DETAILS - SEQUENCE OF OPERATION		•
MQ010	MECHANICAL DETAILS - POINTS LIST		•
MQ011	MECHANICAL DETAILS - SYSTEM DIAGRAM		•
MD101	MECHANICAL EXISTING PLAN - INTERSTITIAL PLAN	•	•
MH101	LEVEL 1 MECHANICAL CEILING PLAN - EAST HOUSE	•	•
MH102	LEVEL 1 MECHANICAL CEILING PLAN - KNUCKLE	•	•
MH200	INTERSTITIAL DUCTWORK PLAN - WING N		•
MH201	INTERSTITIAL DUCTWORK PLAN - EAST HOUSE	•	•
MH202	INTERSTITIAL DUCTWORK PLAN - KNUCKLE	•	•
MH401	MECHANICAL EQUIPMENT ROOM 1N213 PLAN	•	•
MH402	MECHANICAL SECTIONS		•
MP100	WING R LOWER LEVEL MECHANICAL PLAN - PIPING		•
MP101	INTERSTITIAL MECHANICAL PIPING PLAN - EAST HOUSE		•
MP102	MECHANICAL PIPING PLAN - 1ST FLOOR CONNECTION		•
PLUMBING			
PQ001	PLUMBING SCHEDULES & ABBREVIATIONS		•
PQ002	PLUMBING DETAILS		•
PQ003	PLUMBING DETAILS		•
PQ004	PLUMBING DETAILS		•
PD101	SANITARY - EXISTING - LOWER LEVEL		•
PD201	WING R LOWER LEVEL - DOMESTIC PIPING	•	•
PL101	LEVEL 1 SANITARY PLAN - KNUCKLE	•	•
PL102	LEVEL 1 SANITARY PLAN - EAST HOUSE		•
PL201	INTERSTITIAL STORM PLAN - KNUCKLE	•	•
PL202	INTERSTITIAL STORM AND VENT PLAN - KNUCKLE		•
PL301	ROOF STORM PLAN - KNUCKLE	•	•
PL302	ROOF STORM PLAN - EAST HOUSE		•
PL401	SANITARY, VENT & STORM ISOMETRIC		•
PP101	LEVEL 1 MEDICAL GAS PLAN - KUNCKLE	•	•
PP102	LEVEL 1 MEDICAL PIPING PLAN - EAST HOUSE		•
PP201	INTERSTITIAL DOMESTIC PIPING PLAN - KNUCKLE	•	•
PP202	INTERSTITIAL DOMESTIC PIPING PLAN - EAST HOUSE		•
PP301	SANITARY, VENT & STORM ISOMETRIC		•
ELECTRICAL			
EI001	ELECTRICAL NOTES		•
EI002	ELECTRICAL SCHEDULES		•
EI003	ELECTRICAL DETAILS		•
EP100	ELECTRICAL PARTIAL OVERALL PLAN AND SUBSTATION DETAILS		•
EP101	ELECTRICAL POWER PLAN - KNUCKLE	•	•
EP102	ELECTRICAL POWER PLAN - EAST HOUSE	•	•
EP103	ELECTRICAL ONE LINE DIAGRAM	•	•
EL101	ELECTRICAL LIGHTING PLAN - KNUCKLE	•	•
EL102	ELECTRICAL LIGHTING PLAN - EAST HOUSE	•	•
EL201	INTERSTITIAL ELECTRICAL PLAN - KNUCKLE		•
EL202	INTERSTITIAL ELECTRICAL PLAN - EAST HOUSE		•
EY101	ELECTRICAL LOW VOLTAGE PLAN - KNUCKLE	•	•
EY102	ELECTRICAL LOW VOLTAGE - EAST HOUSE		•
EY201	INTERSTITIAL LOW VOLTAGE PLAN - KNUCKLE		•
EY202	INTERSTITIAL LOW VOLTAGE PLAN - EAST HOUSE		•
FFE			
QF-101a	FFE FLOOR PLAN - LEVEL 1 - KNUCKLE		•
QF-101b	FFE FLOOR PLAN - LEVEL 1 - EAST HOUSE		•

Issue Information

Issue Date:

APRIL 14, 2017

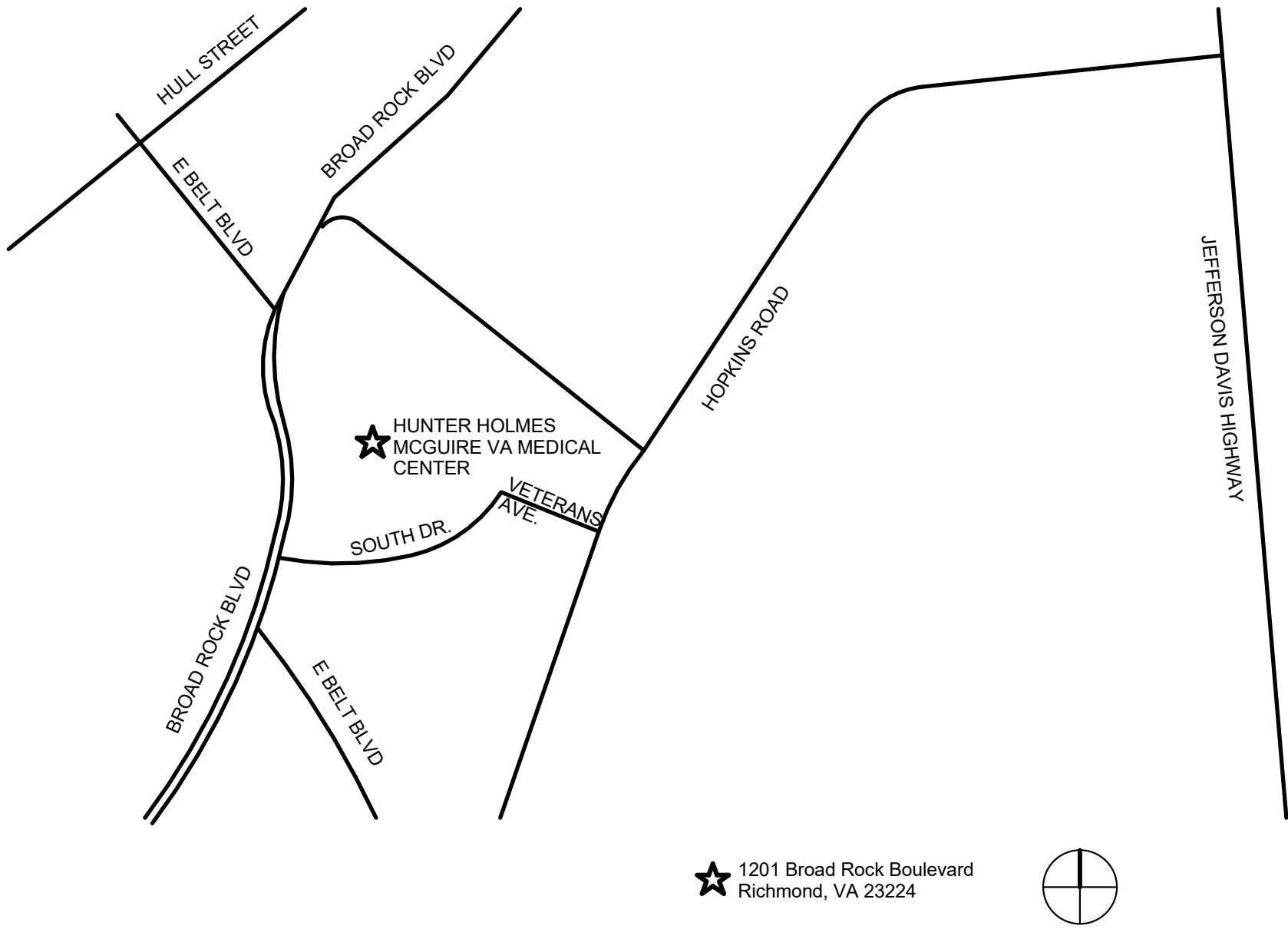
Project Name:

COMMUNITY LIVING CENTER
EXPANSION AND RENOVATION

Issue Name:

100% CONSTRUCTION DOCUMENTS

Location Map



Project Team

Architecture/Interiors

Huelat Davis Healing Design
635 South Fairfax Street
Alexandria, VA 22314-3833
(703) 838-8414

MEP

Design-Aire Engineering, Inc.
220 North College Avenue
Indianapolis, IN 46202-3702
(317) 464-9090

Civil

VIKA, Inc.
20251 Century Boulevard
Germantown, MD 20874
(301) 916-4100

Structural

Ehlert Bryan
1451 Dolley Madison Blvd
Suite 220
McLean, VA 22101
(703) 827-9552

FULLY SPRINKLERED

100% CONSTRUCTION DOCUMENTS

Project Title:
COMMUNITY LIVING CENTER
EXPANSION AND RENOVATION

Location:
1201 Broad Rock Blvd. Richmond, VA 23249


Date:
APRIL 14, 2017

Project Number:
VA 246 14R 0013

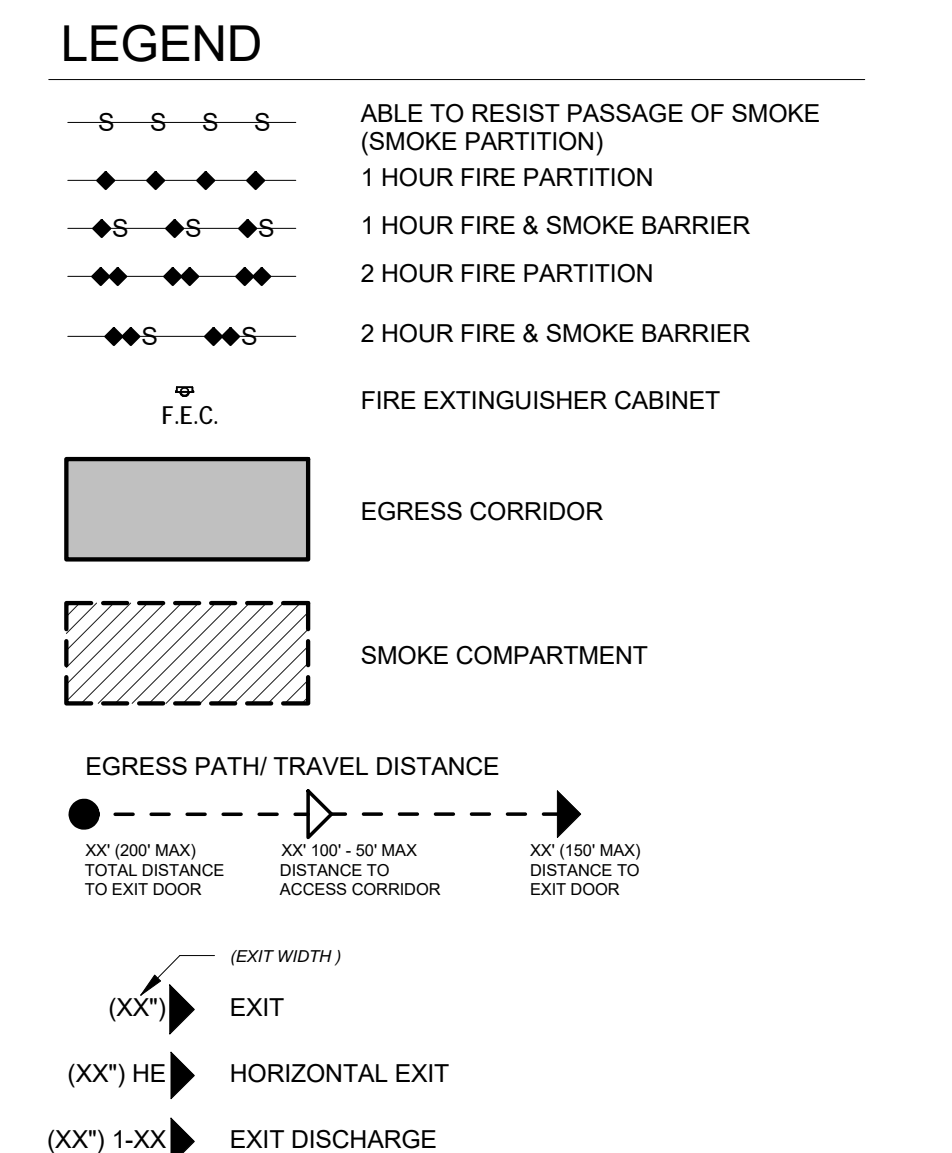
Building Number:

Drawing Number:
G-001
DWG. 02 OF 158

Office of
Construction
and Facilities
Management



VA FORM 08-6231, Oct 1978 1 2 3 4 5 6 7 8 9 EB#1450072

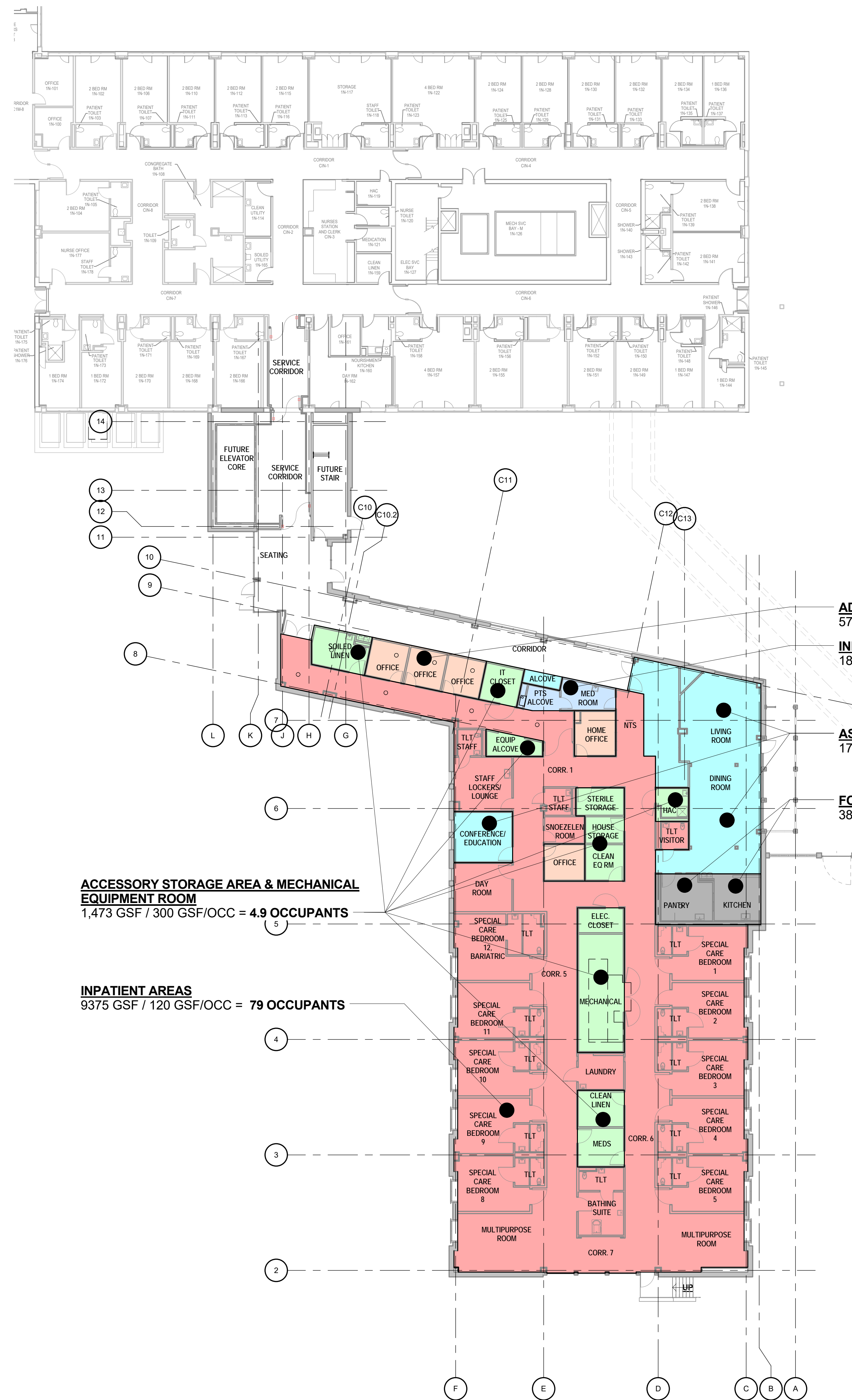


<u>APPLICABLE BUILDING CODES:</u>		<u>REFERENCES: NFPA 101 (2015 EDITION) CHAPTER 18; NFPA 220 (2015 EDITION)</u>	
2012 INTERNATIONAL BUILDING CODE (IBC)	<u>CONSTRUCTION DATA</u>	OCCUPANCY:	NEW HEALTHCARE
2012 INTERNATIONAL ENERGY CONSERVATION CODE		CONSTRUCTION TYPE:	TYPE II (222)
2012 INTERNATIONAL MECHANICAL CODE		STRUCTURAL FRAME	2 HR
2012 INTERNATIONAL FUEL GAS CODE		BEAMS	2 HR
2012 INTERNATIONAL PLUMBING CODE		COLUMNS	2 HR
2012 NATIONAL ELECTRICAL CODE		EXTERIOR BEARING WALLS	2 HR
2012 INTERNATIONAL FIRE CODE		INTERIOR BEARING WALLS	2 HR
2009 ICC/ANSI A117.1 ACCESSIBILITY STANDARD		EXTERIOR NONBEARING WALLS	2 HR
2014 FGI GUIDELINES		FLOOR CONSTRUCTION	2 HR
2015 NFPA 101 - CHAPTER 18 - NEW HEALTHCARE		ROOF CONSTRUCTION	1 HR
		ROOF BEAMS	1 HR
<u>LIFE SAFETY SYSTEMS:</u>		INTERIOR PARTITIONS - PERMANENT	REFER TO LIFE SAFETY PLANS AND PARTITION TYPES
FULLY SPRINKLERED		STORAGE ROOMS: 50 SF - 100 SF	SMOKE PARTITION
FULLY DETECTED		STORAGE ROOMS: OVER 100 SF	1 HR
FULLY ALARMED		ELECTRICAL	1 HR
<u>GROSS SQUARE FOOTAGE - NEW CONSTRUCTION</u>			NFPA SECTION 18.2.6.2.1 - STATES THAT THE MAXIMUM EXIT PATH OF TRAVEL FOR NEW HEALTHCARE = 200 FT. SEE LIFE SAFETY SHEETS FOR TRAVEL DISTANCES
FIRST FLOOR 16,044 SF			
<u>GROSS SQUARE FOOTAGE - RENOVATION</u>			
FIRST FLOOR 280 SF			
<u>BUILDING FOOTPRINT</u>			
FIRST FLOOR 17,387 SF			
<u>OCCUPANCY CAPACITY - GROUND LEVEL</u>	<u>OCCUPANT LOAD - GROUND LEVEL</u>		
EXIT DISCHARGE 1-01 42" CLEAR WIDTH / 20 = 210 OCCUPANTS	INPATIENT AREAS / SLEEPING AREAS	9,375 GSF / 120 GSF/OCC = 79 OCCUPANTS	
EXIT DISCHARGE 1-02 42" CLEAR WIDTH / 20 = 210 OCCUPANTS	ACCESSORY STORAGE AREA & MECH EQ ROOM	1,473 GSF / 300 GSF/OCC = 4.9 OCCUPANTS	
EXIT DISCHARGE 1-03 42" CLEAR WIDTH / 20 = 210 OCCUPANTS	ADMINISTRATION / PHYSICIANS	574 GSF / 100 GSF/OCC = 5.7 OCCUPANTS	
EXIT DISCHARGE 1-04 42" CLEAR WIDTH / 20 = 210 OCCUPANTS	INPATIENT TREATMENT	183 GSF / 240 GSF/OCC = .8 OCCUPANTS	
TOTAL OCCUPANT CAPACITY = 840 OCCUPANTS	ASSEMBLY, UNCONCENTRATED	1747 GSF / 15 GSF/OCC = 116.5 OCCUPANTS	
	FOOD SERVICE	385 GSF / 100 GSF/OCC = 3.9 OCCUPANTS	
		TOTAL OCCUPANT LOAD = 210.8 OCCUPANTS	

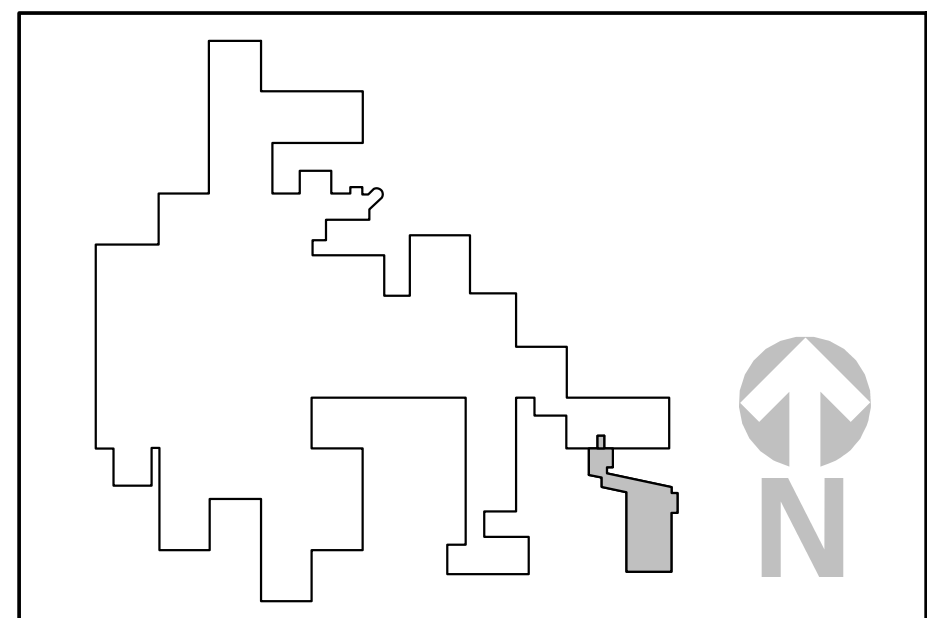
SMOKE COMPARTMENT A -
12,071 SQ FT

TRAVEL DISTANCES	
	Egress Distance
TRAVEL DISTANCE A	134' - 1"
TRAVEL DISTANCE B	100' - 3 1/2"
TRAVEL DISTANCE C	129' - 10 1/2"

9/22/2017 3:52:34 PM
C:\Local Revit Files\VA 246 14R 0013_AS 15_BChompas.rvt
one eighth inch = one foot
three eighths inch = one foot
one quarter inch = one foot
one half inch = one foot
one inch = one foot
one and one half inch = one foot
three inches = one foot



F5 LEVEL 1 LIFE SAFETY OCCUPANCY FLOOR PLAN
1/16" = 1'-0"



CONSULTANTS: EHLERT BRYAN consulting structural engineers 1451 Dolley Madison Blvd. Suite 220 McLean VA 22101-3812 703-827-9552 www.ehlert-bryan.com		STAMP COMMONWEALTH OF VIRGINIA GARY M. ADAMS Lic. No. 015047 ARCHITECT April 2017		ARCHITECTS/ENGINEERS: HUELAT DAVIS HEALING DESIGN 635 S. Fairfax Street 835 S. Fairfax Street 703.838.8414 www.healingdesign.com Virginia Alexandria, VA 22314 DAE DESIGN/ANALYSIS ENGINEERING, INC. 220 North College Avenue 220 North College Avenue 317.464.9090 www.daengineering.com Indianapolis, Indiana 46202		Drawing Title: LIFE SAFETY - OCCUPANCY PLAN Approved: Project Director		Project Title: COMMUNITY LIVING CENTER EXPANSION AND RENOVATION Location: 1201 Broad Rock Blvd. Richmond, VA 23249 Date: APRIL 14, 2017 Checked: BJC Drawn: JH		Project Number: VA 246 14R 0013 Building Number: Drawing Number: LS-101 DWG. 04 of 158		Office of Construction and Facilities Management Department of Veterans Affairs	
--	--	---	--	--	--	--	--	--	--	--	--	---	--