
**ASBESTOS ASSESSMENT
2008**

ASBESTOS REINSPECTION REPORT

**John Cochran Division
915 North Grand Boulevard
St. Louis, Missouri**

Building 7



Prepared for:

**St. Louis V. A. Medical Center
915 North Grand Boulevard
St. Louis, Missouri**

Prepared by:



**1421 Clarkview Road, Suite 100
Baltimore, MD 21209
(888) 776-0670**



**P. O. Box 17867
Shreveport, Louisiana 71138-0867
(318) 687-3771**

INTRODUCTION
2008 ASBESTOS REINSPECTION REPORT
ST. LOUIS V. A. MEDICAL CENTER
JOHN COCHRAN AND JEFFERSON BARRACKS DIVISIONS

SCOPE OF WORK

1. The Inspector and Management Planner reviewed prior inspections and Management Plan information on file and compared this information with existing conditions for each facility.
2. This asbestos reinspection complies with the requirements of Asbestos Hazard Emergency Response Act (AHERA).
3. Each facility inspection was performed by an accredited inspector.
4. For each facility, the inspector performed the following tasks:
 - a. Visually reinspected and reassessed the condition of all friable known or assumed ACBM.
 - b. Visually inspected material that was previously considered non-friable Asbestos-Containing Building Material (ACBM) and touched the material to determine whether it has become friable since the last inspection.
 - c. Identified any homogeneous areas with material that has become friable since the last inspection or reinspection.
 - d. The inspector collected bulk samples for analysis of newly friable material that is already assumed (not sampled) to be ACBM or collected additional bulk samples to fully assess the suspect materials.
 - e. Visually inspected, sampled, analyzed, and assessed the conditions of building materials that have been added to the facility since the last inspection or reinspection.
 - f. Assessed the condition of the newly friable material in areas where samples were collected and of newly friable material in areas assumed to be ACBM.
 - g. Reassessed the condition of friable known or assumed ACBM previously identified.
 - h. Recorded above information on field inspection forms for each facility.
5. A Management Planner reviewed the above information and performed the following required functions:
 - a. Reviewed each Management Plan for compliance with AHERA and verified that the plan reflects current conditions.
 - b. Reviewed the results of each reinspection and assessment.
 - c. Recommended in writing, the appropriate response actions.
 - d. Signed and dated the review documents, included the accreditation number of inspectors and planners, and submitted a copy to the Designated Person.
6. The following information was submitted to the Designated Person under AHERA, for inclusion in the Management Plan for each facility and, optionally, at a central office location.
 - a. The date of the inspection, the name and signature of the person making the inspection, state of accreditation, his or her accreditation number, and any changes in the condition of known or assumed ACBM.
 - b. If samples were collected, the exact locations where samples are collected during the inspection, a description of the manner used to choose sampling locations, the

- name and signature of each accredited inspector who collected the samples, state of accreditation, and his or her accreditation number.
- c. Any assessments or reassessments made of friable material, the name and signature of the accredited inspector making the assessments, state of accreditation, and his or her accreditation number.

MANAGEMENT PLAN RECOMMENDATIONS

The following general notes are for all facilities inspected during the Asbestos Reinspection. These notes reference any deficiencies found in prior inspections, reinspections, and the current Management Plan.

1. Removal Priorities were developed for each homogeneous area. The Removal Priorities are an indicator of priorities for future repair work or abatement work to be scheduled as financial budgets allow. Please see the *2008 Reinspection Condition and Removal Priority Table* for further detail.
2. The current condition of material was listed for each homogeneous area. The condition, location, and potential for disturbance factors are used for the hazard ranking. Please see the *2008 Reinspection Condition and Removal Priority Table* for the condition summaries.
3. Records for custodial, janitorial, and maintenance staff who have received two-hour awareness training should be filed in the Management Plan.
4. Any **new** custodial, janitorial, or maintenance staff that have the potential to come in contact with asbestos-containing materials (ACM) are required to attend a two-hour awareness training class. Records of training for new employees should be filed in the Management Plan.
5. The Designated Person is required to inform workers and building occupants at least once a year about the Management Plan. This includes information about inspections, response actions, and post-response action activities that are planned or in progress. Provide a copy of the notification to each facility and include a copy in the Management Plan.
6. Maintenance areas (boiler rooms, janitor closets, etc.) are required to have warning labels where ACM are located. Install warning labels in these areas as needed. Some older labels may have come loose and are no longer visible. Post the labels in a prominent location.
7. Review the enclosed *2008 Reinspection Condition and Removal Priority Table* for maintenance actions that may be required and to establish priorities and budgets for future repair and abatement work.
8. Periodic "Surveillance Inspections" are required every six (6) months. This inspection should indicate the condition of the material and provide recommendations for repair or potential removal. Consistency of inspections is desired and, therefore, should be performed by the same individual(s) for all facilities. An accredited inspector is not required, but is recommended. Records of Surveillance Inspections should be filed in both the administrative and facility Management Plans.
9. "Reinspections" are required every three (3) years. Updated information should be added to the Management Plan.
10. The existing Management Plan (original) is updated by this Three-Year Reinspection. All procedures and methods listed in the Plan are still in effect and should be followed

- unless specifically updated or omitted by this inspection. This includes maintenance procedures, repairs to damaged material, response actions, record keeping, surveillance inspections, and training.
11. An accredited “Supervisor” should be on staff or available on a contract basis per AHERA guidelines. Certification paperwork should be filed in the training section of the Management Plan.
 12. ACBM should only be removed by licensed and accredited contractors in the State of Missouri. Response actions related to abatement activity should be filed in the Management Plan. Removal of limited amounts of asbestos is within the scope of the Management Plan by the accredited Supervisor and trained individuals.
 13. Notification should be provided to “outside contractors” about ACM within the facility. This should include such trades or services as telephone, electrical, plumbing, air conditioning, and other construction work. A form should be created for this purpose and placed in the Management Plan.
 14. New building construction and portable buildings added to a facility are required to be inspected and sampled for ACM. In lieu of this, a letter from the architect, engineer, or manufacturer can be obtained that states “no ACM were specified or used in the facility”. A copy of this letter is to be filed with the Management Plan at the facility. This letter will cancel the requirement for sampling.
 15. Abatement Costs were developed for each homogeneous area and per facility. The estimated abatement cost is for budget purposes only. The cost is based on the area of material and estimated abatement costs for this material. The cost is for abatement only and does not include abatement design, air monitoring, or project observation costs.

REPORT SECTION
2008 ASBESTOS REINSPECTION REPORT
ST. LOUIS V. A. MEDICAL CENTER
JOHN COCHRAN AND JEFFERSON BARRACKS DIVISIONS

This report includes the following sections:

ACM Homogeneous Areas Summary Table and Drawings

This section provides a quick table reference to all asbestos-containing homogeneous areas found during the reinspection and drawings with the asbestos-containing homogeneous areas found during the 2008 asbestos reinspection.

Condition and Removal Priority Table

This section provides a table with the current condition, potential for disturbance, and removal priority for each homogeneous area.

Master Summary Table – Asbestos Bulk Samples

This table provides a listing of all asbestos bulk samples taken to date.

Asbestos-Containing Bulk Samples

This table provides a listing of all asbestos-containing bulk samples.

2008 Reinspection – Inspection Logs

This section provides the field inspection logs for samples taken during the 2008 asbestos reinspection.

Bulk Sample Location Drawings

This section provides drawings with sample locations for all asbestos bulk samples.

2008 Reinspection – Photographs

This section provides photographs of all asbestos bulk samples taken during the 2008 asbestos reinspection.

2008 Reinspection – Laboratory Reports

This section provides all laboratory analytical results.

Certifications

This section provides certifications for all Inspectors, the Management Planner who reviewed this Management Plan, and the laboratory that performed the bulk sample analysis.

Periodic Surveillance Forms

This section includes the forms completed during the periodic surveillance inspections required every six (6) months.

Management Plan Updates

This section includes the records of any asbestos abatement activities that are completed at the subject site. Notifications, daily notes, drawings, etc., should be placed in this section. This would also include air-monitoring data from asbestos abatement projects.

Response Actions

This section includes the records of any internal asbestos abatement or operation and maintenance activities that may be completed by V. A. employees. This would include any drawings, field notes, and air monitoring that was completed.

Training Documents

This section includes the records of training for the Designated Person and accredited Supervisor, as well as the two-hour awareness training for the custodial, janitorial, and maintenance staff.

Annual Notification Letters

This section includes copies of the annual Notification Letters provided to employees to inform them of the availability of the Management Plan.

Initial Inspection

This section contains the original asbestos inspection that was completed in 1994. This information was used to develop the 2008 Asbestos Reinspection.

CONTRACTORS
2008 ASBESTOS REINSPECTION REPORT
ST. LOUIS V. A. MEDICAL CENTER
JOHN COCHRAN AND JEFFERSON BARRACKS DIVISIONS

This 2008 Asbestos Reinspection was provided by:

Contractor:

FINBACK 670, Inc.
1421 Clarkview Road, Suite 100
Baltimore, MD 21209
(888) 776-0670 (Office)
(877) 776-0670 (Fax)

Subcontractor:

ALTEC Environmental Consultants, Inc.
10100 Woolworth Road
Keithville, LA 71047
(318) 687-3771 (Office)
(318) 687-9923 (Fax)

INSPECTORS:



Brandon Odom
LA Certificate No. 9I01392



Donald R. Joiner
LA Certificate No. 8I01348
LA Certificate No. 9I01348



Eric Clipp
LA Certificate No. 9I01588



Joshua Anders
LA Certificate No. 9I01589



Justin L. Holcomb
LA Certificate No. 9I00306

MANAGEMENT PLANNER:



Roy W. Dowling
LA Certificate No. 9I00213 – Inspector
LA Certificate No. 9P00072 – Management Planner

Accreditation Agency: Louisiana Department of Environmental Quality

**ACM Homogeneous Areas
Summary Table and Drawings**

**ST. LOUIS V. A. MEDICAL CENTER
JOHN COCHRAN DIVISION
2008 THREE-YEAR ASBESTOS REINSPECTION
ACM HOMOGENEOUS AREAS SUMMARY TABLE**

Building 7 - Basement				
Floor	Flooring Materials	Surfacing Materials	TSI Materials	Miscellaneous Materials
Basement	No ACM	No ACM	HMA-02 Pipe Insulation & Fittings HMA-06 Tank Insulation	No ACM
Building - 1st Floor				
Floor	Flooring Materials	Surfacing Materials	TSI Materials	Miscellaneous Materials
1	HMA-01 12x12 Floor Tile & Adhesive	No ACM	No ACM	HMA-03 Black Pegboard HAM-04 Transite Vent Hoods HMA-05 Lab Countertops

JOHN COCHRAN DIVISION
SITE PLAN

ST. LOUIS V.A. MEDICAL CENTER
JOHN COCHRAN DIVISION
ST. LOUIS, MISSOURI

- 1

MAIN HOSPITAL & CLINICAL ADDITION
- 1A

EMERGENCY GENERATOR VAULT
- 2

EDUCATION, MEDICAL MEDIA, CHAPEL & RESEARCH
- 2B

METHADONE CLINIC
- 3

IRM & RESEARCH
- 4

ENGINEERING & AFGE
- 5T

OATP CLONIC
- 6

RESEARCH
- 6A

RESEARCH
- 7

RESEARCH
- 7A

RESEARCH
- 8

BOILER PLANT
- 8A

CHILLER PLANT
- 8B

EMERGENCY GENERATOR
- 10

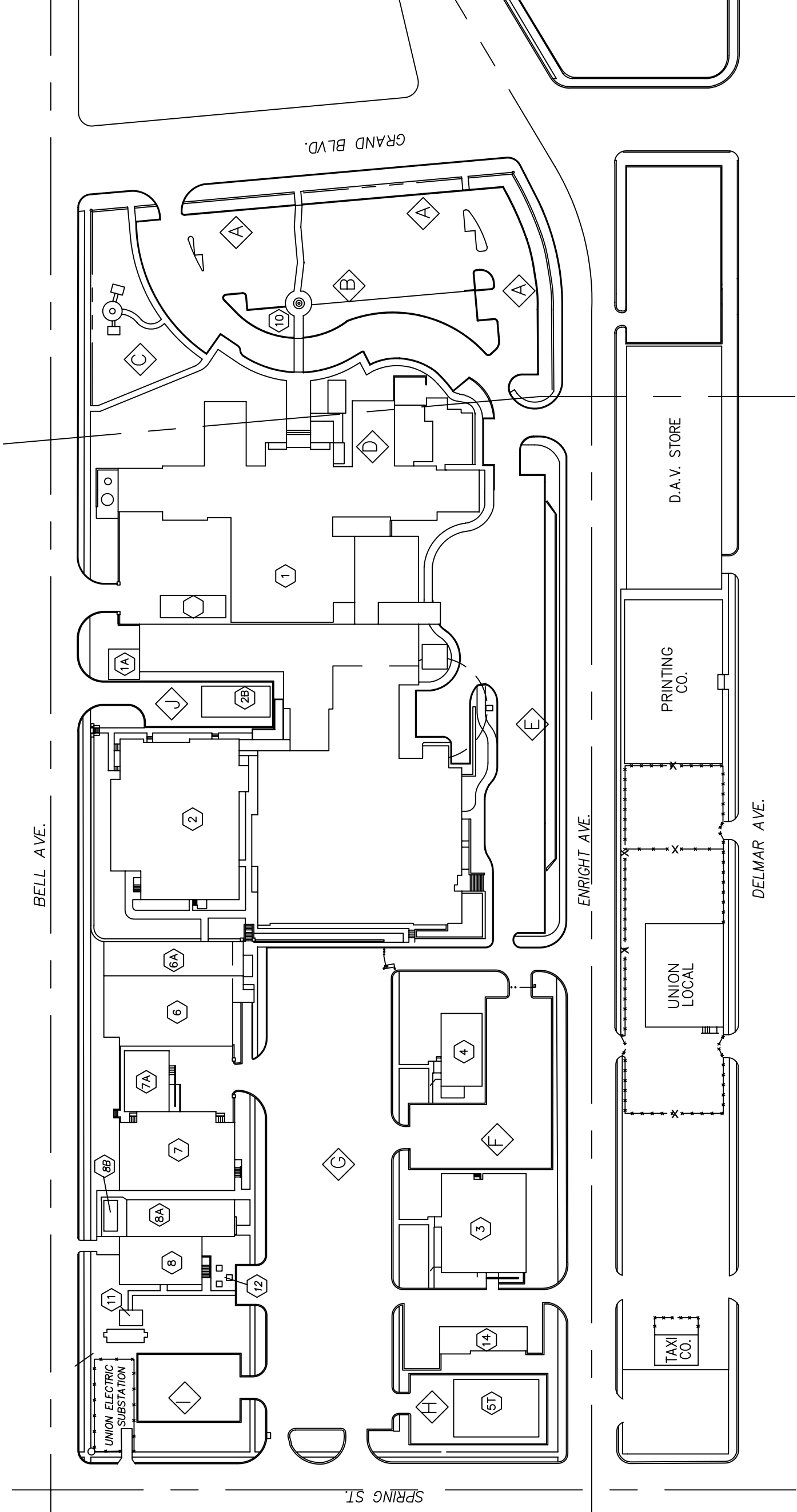
FLAG POLE
- 11

GAS METER HOUSE
- 12

WET SALT STORAGE
- 14

GARAGE
- 24

WASTE STORAGE FACILITY



BASEMENT

TITLE

BUILDING 7 - BASEMENT
SITE PLAN

LOCATION

ST. LOUIS V.A. MEDICAL CENTER
JOHN COCHRAN DIVISION
ST. LOUIS, MISSOURI



PROJECT NO.

08-14529

SCALE

1" = 10'

PAGE

1

DRAWN BY

KDB

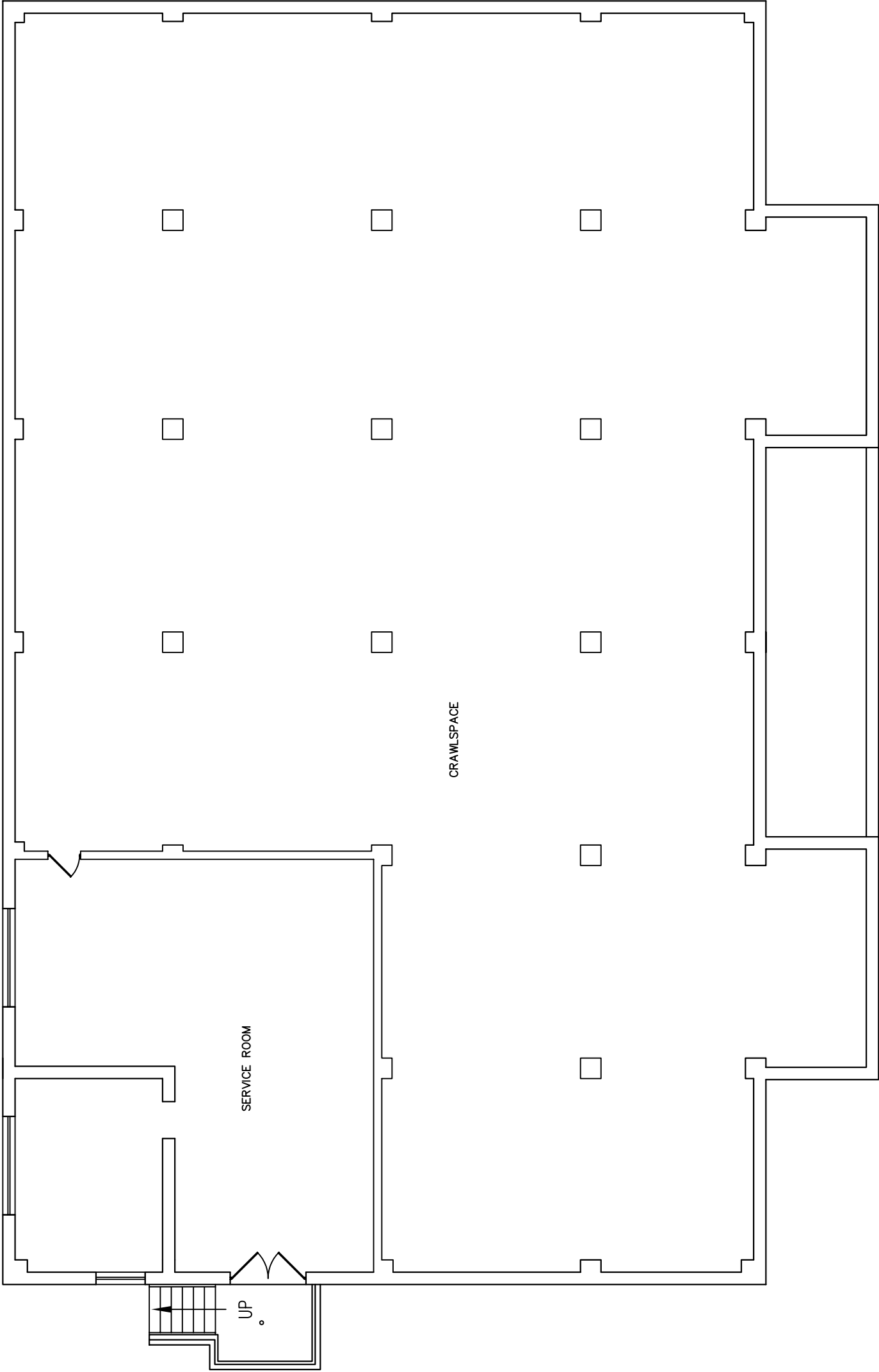
SHEET

B

DATE

08/18/08

F:\Dwgs\08-14529\AS\LouisRehnspecton\Drawings.dwg



BASEMENT FLOOR PLAN





TITLE

BUILDING 7 - BASEMENT
T51 HOMOGENEOUS AREAS

LOCATION

ST. LOUIS V.A. MEDICAL CENTER
JOHN COCHRAN DIVISION
ST. LOUIS, MISSOURI

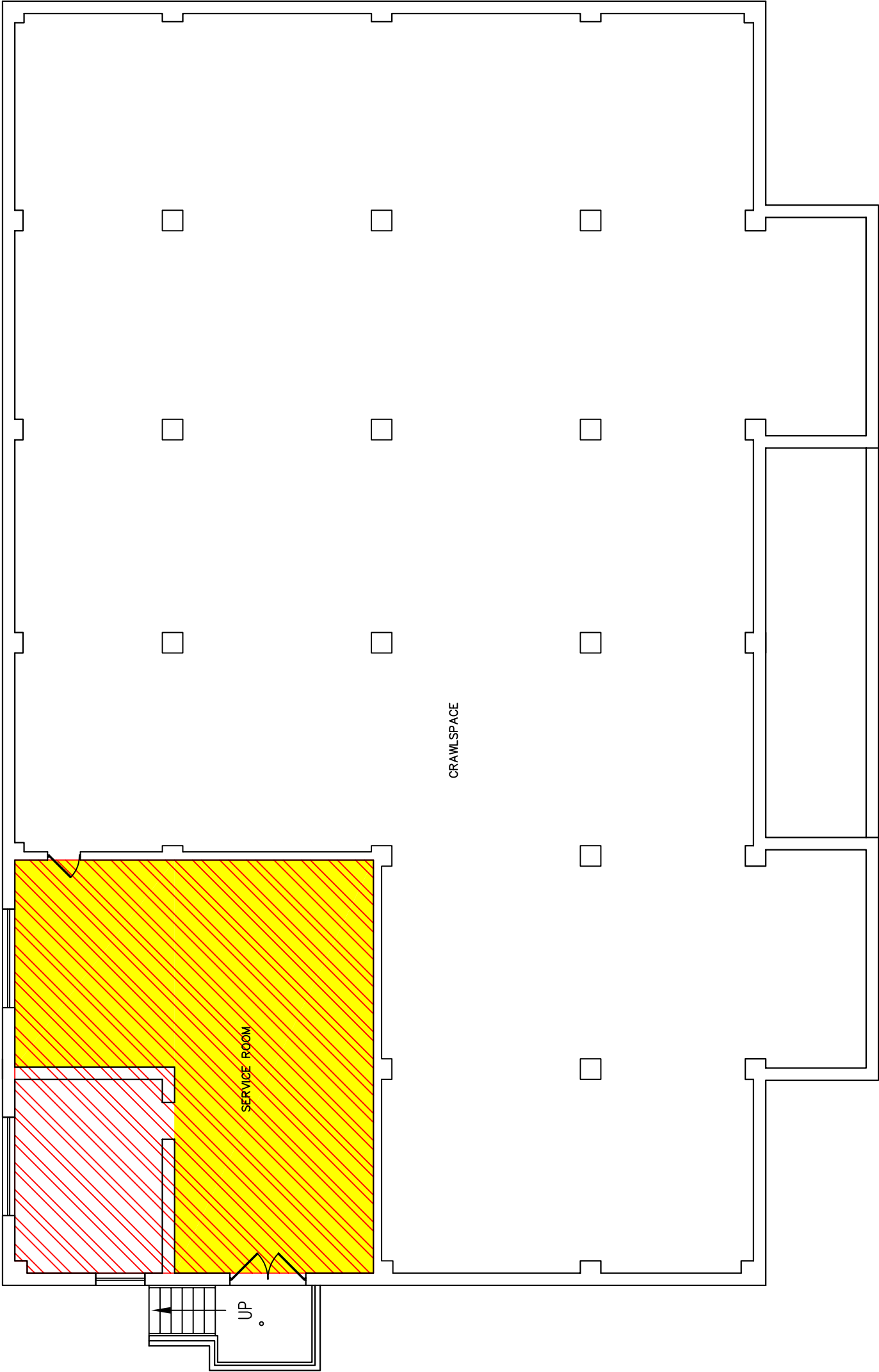
HOMOGENEOUS AREA LEGEND



HMA-02 PIPE INSULATION & FITTINGS
1193 LIN FT, 205 FITTINGS



HMA-06 TANK INSULATION
48 SQ FT



NOTES:

ALL BASEMENT CRAWL SPACE PIPE INSULATION HAS BEEN ABATED.

SERVICE ROOM HAS 2", 3", 4", 6", & 12" LINES & TANK INSULATION WITH ASBESTOS LABELS FROM PREVIOUS INSPECTION. NO SAMPLES TAKEN.

NO DUCTWORK WAS LOCATED.



FINBACK670



PROJECT NO.

08-14529

SCALE

1" = 10'

PAGE

1

DRAWN BY

KDB

SHEET

B

DATE

08/18/08

F:\Dwgs\08-14529\AS\LouisRehnspection\Drawings.dwg

NOTE: THERE ARE UNKNOWN AMOUNTS & LOCATIONS OF PIPE INSULATION, FITTINGS & HVAC DUCTWORK ABOVE INACCESSIBLE PLASTER CEILINGS & IN INACCESSIBLE PIPE CHASES.

BASEMENT FLOOR PLAN

**ST. LOUIS V.A. MEDICAL CENTER
JOHN COCHRAN DIVISION
2008 THREE-YEAR REINSPECTION
THERMAL SYSTEM INSULATION (TSI) SUMMARY TABLE**

Building 7 - Basement					
Room #	Description	Qty	S/LF	Ftgs	TH/DI
1	magnesia pipe lagging	226	lf	0	4.00
1	magnesia pipe lagging	3	lf	0	8.00
1	magnesia pipe lagging	3	lf	0	10.00
1	magnesia pipe lagging	20	lf	0	12.00
1	magnesia pipe lagging	3	lf	0	14.00
1	mudded joint fitting on mag pipe la	0	ea	12	12.00
1	mudded joint fitting on paperwrap l	0	ea	3	6.00
1	paper wrap pipe lagging	3	lf	0	6.00
1	tank insulation	0	sf	0	2.00
1	tank insulation	22	sf	0	2.00
001A	magnesia pipe lagging	42	lf	0	4.00
001A	magnesia pipe lagging	26	lf	0	12.00
001A	mudded joint fitting on mag pipe la	0	ea	8	4.00
001A	mudded joint fitting on mag pipe la	0	ea	4	12.00
2	magnesia pipe lagging	782	lf	0	4.00
2	magnesia pipe lagging	85	lf	0	6.00
2	mudded joint fitting on mag pipe la	0	ea	165	4.00
2	mudded joint fitting on mag pipe la	0	ea	13	6.00
TOTALS		1215		205	

1st FLOOR



LOCATION

ST. LOUIS V.A. MEDICAL CENTER
JOHN COCHRAN DIVISION
ST. LOUIS, MISSOURI



08-14529

 $1'' = 15'$

PAGE

1

SHEET

8/18/08

F:\Dwgs\08-14529V\AST.LouisReInspection\Drawings.dwg




TITLE

BUILDING 7 - FIRST FLOOR
FLOORING HOMOGENEOUS AREAS

LOCATION

ST. LOUIS V.A. MEDICAL CENTER
JOHN COCHRAN DIVISION
ST. LOUIS, MISSOURI

HOMOGENEOUS AREA LEGEND

 HMA-01 12" X 12" FLOOR TILE & ADHESIVE
4946 SQ FT

MATERIAL LEGEND

1 BLACK MASTIC
2 YELLOW MASTIC
3 CONCRETE
4 CERAMIC TILE
5 WOOD
6 CARPET
7 TERRAZZO
8 WHITE 12" X 12" FT
9 GREEN 12" X 12" FT
A GRAY 12" X 12" FT
B
C



FINBACK670



PROJECT NO. SCALE

08-14529 1" = 15'

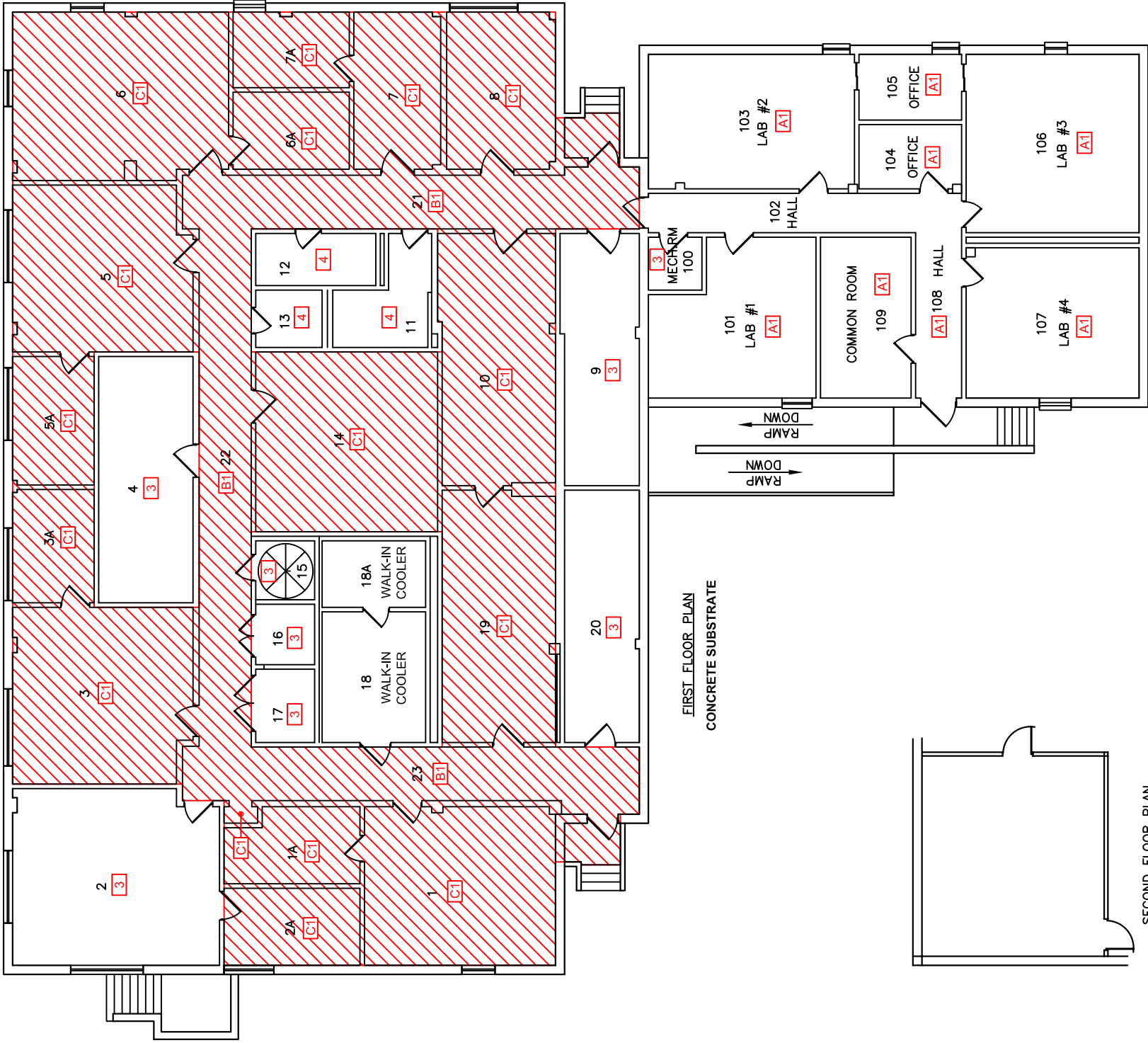
PAGE DRAWN BY

1 KDB

SHEET DATE

B 08/18/08

F:\Dwgs\08-14529\AS\LouisRehnspecton\Drawings.dwg



SECOND FLOOR PLAN



LOCATION

HOMOGENEOUS AREA LEGEND

- NOTES:**

TRANSITE VENT HOODS ALSO CONTAIN BLACK LAB COUNTERTOPS.

MATERIAL LEGEND

- | | |
|---|------------------------------------|
| A | 12" X 12" CEILING TILE |
| B | 12" X 12" CEILING TILE W/GLUE DOTS |
| C | 2' X 2' CEILING TILE |
| D | 2' X 4' CEILING TILE |
| E | SHEETROCK |
| F | PLASTER |
| G | TRANSITE |
| H | SPRAY-ON INSULATION |
| I | FIBERGLASS |
| J | WOOD |
| K | METAL |
| L | CONCRETE |



PROJECT NO.

08-14529

PAGE

7

SHEET

DATE _____

18/08

F:\Dwas\08-14529VASt.LouisReInspection\Drawings.dwg



Condition and Removal Priority Table

¹ **Qualitative Rankings and Quantitative (Numerical) Ratings for Current Condition**

Qualitative Ranking	Numerical Rating	Description of Current Condition
Good	8, 9, 10	Surfacing material has no visible damage or small amounts of damage; covering on thermal system insulation is intact or has small amounts of damage; miscellaneous materials intact; no visible debris or small amounts of debris.
Fair	4, 5, 6, 7	Surfacing material has moderate but not extensive amounts of visible damage; covering on thermal system insulation is cut or torn, exposing moderate but not extensive amounts of insulation; moderate but not extensive damage to miscellaneous materials such as floor tile; moderate but not extensive amounts of visible dust and debris..
Poor	1, 2, 3	Extensive damage to surfacing material; covering on thermal system insulation is cut or torn extensively and insulation itself is damage; miscellaneous materials such as floor tile extensively damaged and underlying mastic exposed; extensive amounts of dust and debris.

² **Qualitative Rankings and Quantitative (Numerical) Ratings for Potential for Disturbance**

Qualitative Ranking	Numerical Rating	Assessment Factors	
		Physical Disturbance	Environmental Disturbance
Low	1, 2, 3	<p><u>Accessibility:</u> accessibility during normal operations</p> <p><u>Activities:</u> activities that people do and how often they do them</p>	<p><u>Vibration:</u> vibration from operating machinery, HVAC equipment, and so forth</p> <p><u>Air/Dust:</u> air currents strong enough to dislodge loose ACM; airborne dust that can erode material</p> <p><u>Corrosive:</u> corrosive atmosphere or liquids that can erode the covering or matrix</p> <p><u>Water Damage:</u> water damage from leaking roof, pipe or other source</p>
Medium	4, 5, 6, 7		
High	8, 9, 10		

³ **Qualitative Rankings and Quantitative (Numerical) Ratings for Removal Priority**

Qualitative Ranking	Numerical Rating	Description of Current Condition
High	1, 2, 3	Address short-term
Medium	4, 5, 6, 7	Address with on-going maintenance procedures
Low	8, 9, 10	Maintain in good condition

**ST. LOUIS V. A. MEDICAL CENTER
JOHN COCHRAN DIVISION
2008 THREE-YEAR ASBESTOS REINSPECTION
CONDITION AND REMOVAL PRIORITY TABLE**

Homogeneous Area No.	Bldg	Floor	Material Description	Friable Yes/No	Accessibility Yes/No Restricted	Current Condition ¹		Potential for Disturbance ²		Removal Priority ³
						Rating	Based On	Rating	Based On	
Building 7 - Basement										
HMA-02	7	Basement	Pipe Insulation & Fittings	Yes	No	7	Damage	2	Access	6
HMA-06	7	Basement	Tank Insulation	Yes	No	7	Damage	2	Maintenance	6
Building 7 - 1st Floor										
HMA-01	7	1	12x12 Floor Tile & Adhesive	No	Yes	10	Intact	2	Floor Maintenance	7
HMA-03	7	1	Black Pegboard	No	No	9	Minor Penetrations	2	Access	9
HAM-04	7	1	Transite Vent Hoods	No	No	10	Intact	1	Access	9
HMA-05	7	1	Lab Countertops	No	Yes	10	Intact	1	Maintenance	10

Master Summary Table
Asbestos Bulk Samples

ST. LOUIS V. A. MEDICAL CENTER
JOHN COCHRAN DIVISION
2008 THREE-YEAR ASBESTOS REINSPECTION
SUMMARY OF BULK SAMPLES TAKEN TO DATE

Red = Asbestos-Containing Material (ACM) Blue = Non ACM Purple = Abated ACM

Building	Floor	Room	Sample ID	Material Description
1994 Initial Asbestos Inspection				
JC07	00	001	JC-07-00-T-001-02	Tank insulation
JC07	00	002	JC-07-00-T-002-08	Magnesia pipe lagging
JC07	00	002	JC-07-00-T-002-07	Mudded joint fitting on magnesia pipe lagging
2008 Asbestos Reinspection				
JC07	1	107	JC-7-01-F-107-001A	White 12x12 floor tile, black mastic
JC07	1	107	JC-7-01-M-107-002A	Transite vent hood
JC07	1	107	JC-7-01-M-107-003A	Black lab countertop
JC07	1	106	JC-7-01-F-106-004A	White 12x12 floor tile, black mastic
JC07	1	106	JC-7-01-M-106-005A	Brown baseboard, adhesive
JC07	1	103	JC-7-01-F-103-006A	White 12x12 floor tile, black mastic
JC07	1	103	JC-7-01-M-103-007A	Brown baseboard, adhesive
JC07	1	102	JC-7-01-M-102-008A	Brown baseboard, adhesive
JC07	1	21	JC-7-01-F-21-009A	Green 12x12 floor tile, black mastic
JC07	1	10	JC-7-01-F-10-010A	Gray 12x12 floor tile, black mastic
JC07	1	21	JC-7-01-M-21-011A	2x2 ceiling tile
JC07	1	7A	JC-7-01-M-7A-012A	Gray baseboard, adhesive
JC07	1	7A	JC-7-01-F-7A-013A	Gray 12x12 floor tile, black mastic
JC07	1	10	JC-7-01-M-10-014A	Black lab countertop
JC07	1	10	JC-7-01-M-10-015A	Black peg board
JC07	1	21	JC-7-01-T-21-016A	3" elbow - white wrap, white block insulation
JC07	1	21	JC-7-01-T-21-017A	3" horizontal - white wrap, yellow insulation
JC07	1	6	JC-7-01-M-6-018A	Black lab countertop
JC07	1	6	JC-7-01-M-6-019A	Transite vent hood
JC07	1	6	JC-7-01-F-6-020A	Gray 12x12 floor tile, black mastic
JC07	1	102	JC-7-01-M-102-021A	2x4 ceiling tile
JC07	1	108	JC-7-01-M-108-022A	2x4 ceiling tile
JC07	1	108	JC-7-01-M-108-023A	2x4 ceiling tile
JC07	1	16	JC-7-01-M-16-024A	Gray baseboard, adhesive
JC07	1	22	JC-7-01-F-22-025A	Green 12x12 floor tile, black mastic
JC07	1	22	JC-7-01-M-22-026A	2x2 ceiling tile
JC07	1	23	JC-7-01-M-23-027A	2x2 ceiling tile
JC07	1	22	JC-7-01-F-22-028A	Green 12x12 floor tile, black mastic
JC07	1	23	JC-7-01-M-23-029A	Gray baseboard, adhesive
JC07	1	1A	JC-7-01-M-1A-030A	Sheetrock mud
JC07	1	1	JC-7-01-M-1-031A	Black peg board
JC07	1	2	JC-7-01-M-2-032A	Black peg board
JC07	1	2	JC-7-01-M-2-033A	Sheetrock mud
JC07	1	19	JC-7-01-M-19-034A	Sheetrock mud
JC07	1	Attic	JC-7-01-T-AT-035A	4" T - white wrap, white block insulation
JC07	1	Attic	JC-7-01-T-AT-036A	4" horizontal - white wrap, yellow insulation

Asbestos-Containing Bulk Samples

ST. LOUIS V. A. MEDICAL CENTER
JOHN COCHRAN DIVISION
2008 THREE-YEAR ASBESTOS REINSPECTION
LIST OF ASBESTOS-CONTAINING SAMPLES

Building	Floor	Room	Sample ID	Material Description
1994 Initial Asbestos Inspection				
JC07	00	001	JC-07-00-T-001-02	Tank insulation
JC07	00	002	JC-07-00-T-002-08	Magnesia pipe lagging
JC07	00	002	JC-07-00-T-002-07	Mudded joint fitting on magnesia pipe lagging
2008 Asbestos Reinspection				
JC07	1	21	JC-7-01-F-21-009A	Green 12x12 floor tile, black mastic
JC07	1	10	JC-7-01-F-10-010A	Gray 12x12 floor tile, black mastic
JC07	1	7A	JC-7-01-F-7A-013A	Gray 12x12 floor tile, black mastic
JC07	1	10	JC-7-01-M-10-014A	Black lab countertop
JC07	1	10	JC-7-01-M-10-015A	Black peg board
JC07	1	6	JC-7-01-M-6-019A	Transite vent hood
JC07	1	6	JC-7-01-F-6-020A	Gray 12x12 floor tile, black mastic
JC07	1	22	JC-7-01-F-22-025A	Green 12x12 floor tile, black mastic
JC07	1	22	JC-7-01-F-22-028A	Green 12x12 floor tile, black mastic
JC07	1	1	JC-7-01-M-1-031A	Black peg board
JC07	1	2	JC-7-01-M-2-032A	Black peg board

2008 Reinspection Inspection Logs

**FINBACK670**

ASBESTOS INSPECTION LOG



Client: St. Louis V. A. Medical Center
 Location: John Cochran Division - Building 7
 Address: 915 North Grand Boulevard, St. Louis, Missouri

Date: September 17, 2008
 Inspector(s): Brandon Odom and Eric Clippis

Note: Red = Asbestos-Containing Material (ACM) Blue = Non ACM Green = Non ACM (determined by Point Count analysis)

Sample ID	Material Description	Floor	Room	Location
JC-7-01-F-107-001A	White 12x12 floor tile, black mastic	1	107	Northeast corner of room 107
JC-7-01-M-107-002A	Transite vent hood	1	107	Southwest corner of room 107
JC-7-01-M-107-003A	Black lab countertop	1	107	Northwest corner of room107
JC-7-01-F-106-004A	White 12x12 floor tile, black mastic	1	106	Northwest corner of room 106
JC-7-01-M-106-005A	Brown baseboard, adhesive	1	106	Southwest corner of room 106
JC-7-01-F-103-006A	White 12x12 floor tile, black mastic	1	103	Southwest quadrant of room 103
JC-7-01-M-103-007A	Brown baseboard, adhesive	1	103	Northwest quadrant of room 103
JC-7-01-M-102-008A	Brown baseboard, adhesive	1	102	North side of room 102
JC-7-01-F-21-009A	Green 12x12 floor tile, black mastic	1	21	Southeast quadrant of room 21
JC-7-01-F-10-010A	Gray 12x12 floor tile, black mastic	1	10	North side of room 10
JC-7-01-M-21-011A	2x2 ceiling tile	1	21	Center of room 21
JC-7-01-M-7A-012A	Gray baseboard, adhesive	1	7A	North side of room 7A
JC-7-01-F-7A-013A	Gray 12x12 floor tile, black mastic	1	7A	Northwest quadrant of room 7A
JC-7-01-M-10-014A	Black lab countertop	1	10	Southeast quadrant of room 10
JC-7-01-M-10-015A	Black pegboard	1	10	East side of room 10

**FINBACK670**

ASBESTOS INSPECTION LOG



Client: St. Louis V. A. Medical Center
 Location: John Cochran Division - Building 7
 Address: 915 North Grand Boulevard, St. Louis, Missouri

Date: September 17, 2008
 Inspector(s): Brandon Odom and Eric Clippis

Note: Red = Asbestos-Containing Material (ACM) Blue = Non ACM Green = Non ACM (determined by Point Count analysis)

Sample ID	Material Description	Floor	Room	Location
JC-7-01-T-21-016A	3" elbow - white wrap, white block insulation	1	21	Center of room 21
JC-7-01-T-21-017A	3" horizontal - white wrap, yellow insulation	1	21	Center of room 21
JC-7-01-M-6-018A	Black lab countertop	1	6	Northwest corner of room 6
JC-7-01-M-6-019A	Transite vent hood	1	6	Northwest corner of room 6
JC-7-01-F-6-020A	Gray 12x12 floor tile, black mastic	1	6	Northwest corner of room 6
JC-7-01-M-102-021A	2x4 ceiling tile	1	102	West side of room 102
JC-7-01-M-108-022A	2x4 ceiling tile	1	108	North side of room 108
JC-7-01-M-108-023A	2x4 ceiling tile	1	108	South side of room 108
JC-7-01-M-16-024A	Gray baseboard, adhesive	1	16	Northeast corner of room 16
JC-7-01-F-22-025A	Green 12x12 floor tile, black mastic	1	22	At threshold to room 16 in room 22
JC-7-01-M-22-026A	2x2 ceiling tile	1	22	Center of room 22
JC-7-01-M-23-027A	2x2 ceiling tile	1	23	Center of room 23
JC-7-01-F-22-028A	Green 12x12 floor tile, black mastic	1	22	South side of room 22
JC-7-01-M-23-029A	Gray baseboard, adhesive	1	23	South side of room 23
JC-7-01-M-1A-030A	Sheetrock mud	1	1A	North side of room 1A

**FINBACK670**

ASBESTOS INSPECTION LOG



Client: St. Louis V. A. Medical Center
 Location: John Cochran Division - Building 7
 Address: 915 North Grand Boulevard, St. Louis, Missouri

Date: September 17, 2008
 Inspector(s): Brandon Odom and Eric Clippis

Note: Red = Asbestos-Containing Material (ACM) Blue = Non ACM Green = Non ACM (determined by Point Count analysis)

Sample ID	Material Description	Floor	Room	Location
JC-7-01-M-1-031A	Black pegboard	1	1	Center of room 1
JC-7-01-M-2-032A	Black pegboard	1	2	West side of room 2
JC-7-01-M-2-033A	Sheetrock mud	1	2	North side of room 2
JC-7-01-M-19-034A	Sheetrock mud	1	19	Southeast corner of room 19
JC-7-01-T-AT-035A	4" T - white wrap, white block insulation	1	Attic	In attic above room 4
JC-7-01-T-AT-036A	4" horizontal - white wrap, yellow insulation	1	Attic	In attic above room 4

Please use the following guidelines when reading this report:

Red = Asbestos-Containing Material Blue = Non Asbestos-Containing Material

Material Category: F = Flooring S = Surfacing T = TSI M = Miscellaneous Friability: F=Friable NF=Non-Friable Condition: Good = 8, 9, 10 Fair = 4, 5, 6, 7 Poor = 1, 2, 3

GOOD = Surfacing material has no visible damage or small amounts of damage; covering on thermal system insulation is intact or has small amounts of damage; miscellaneous materials intact; no visible debris or small amounts of debris. FAIR = Surfacing material has moderate but not extensive amounts of visible damage; covering on thermal system insulation is cut or torn, exposing moderate but not extensive amounts of insulation; moderate but not extensive damage to miscellaneous materials such as floor tile; moderate but not extensive amounts of visible dust and debris. POOR = Extensive damage to surfacing material; covering on thermal system insulation is cut or torn extensively and insulation itself is damaged; miscellaneous materials such as floor tile extensively damaged and underlying mastic exposed; extensive amounts of dust and debris.

Bulk Sample Location Drawings

JOHN COCHRAN DIVISION
SITE PLAN

ST. LOUIS V.A. MEDICAL CENTER
JOHN COCHRAN DIVISION
ST. LOUIS, MISSOURI

- 1

MAIN HOSPITAL & CLINICAL ADDITION
- 1A

EMERGENCY GENERATOR VAULT
- 2

EDUCATION, MEDICAL MEDIA, CHAPEL & RESEARCH
- 2B

METHADONE CLINIC
- 3

IRM & RESEARCH
- 4

ENGINEERING & AFGE
- 5T

OATP CLONIC
- 6

RESEARCH
- 6A

RESEARCH
- 7

RESEARCH
- 7A

RESEARCH
- 8

BOILER PLANT
- 8A

CHILLER PLANT
- 8B

EMERGENCY GENERATOR
- 10

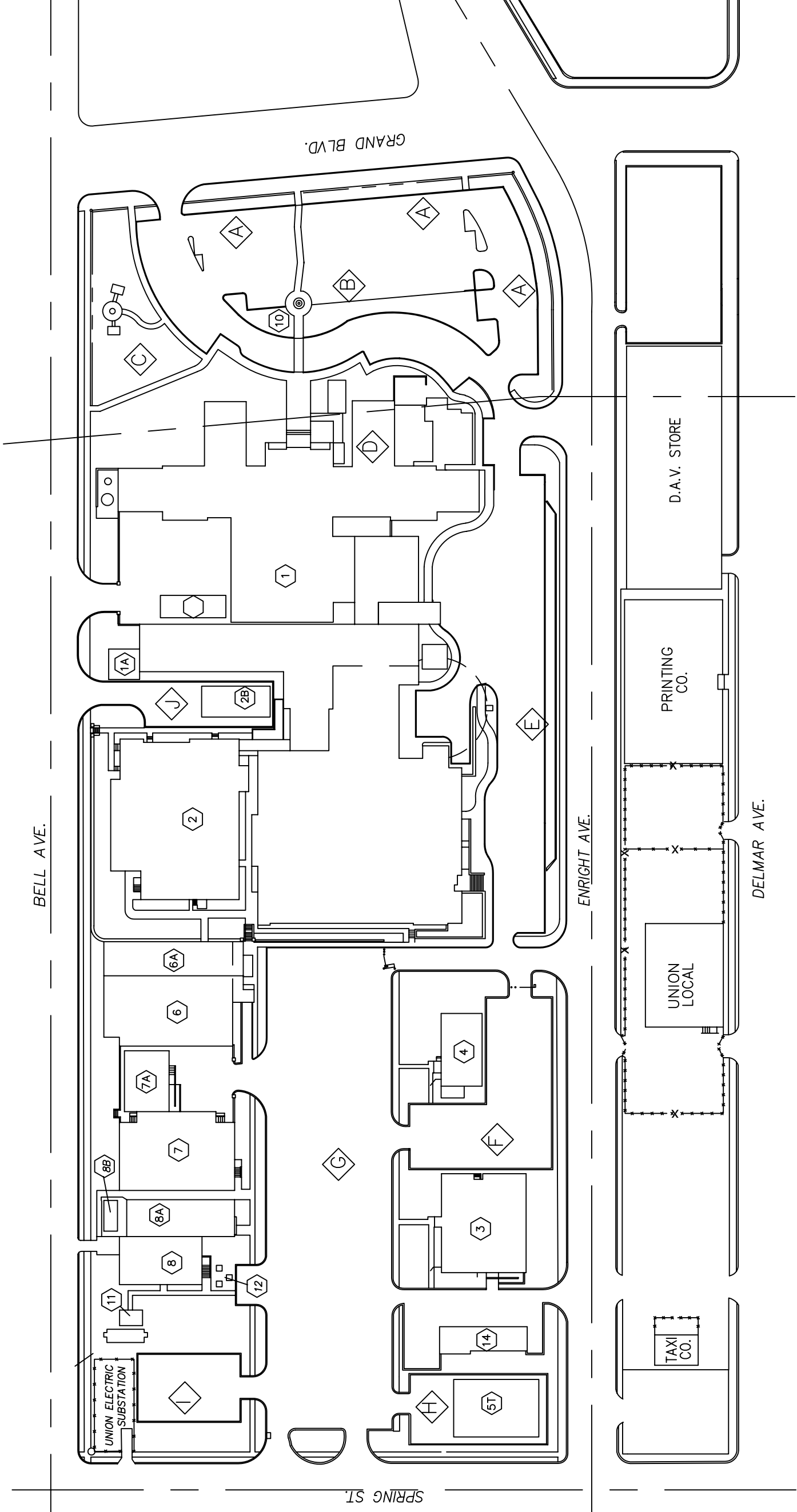
FLAG POLE
- 11

GAS METER HOUSE
- 12

WET SALT STORAGE
- 14

GARAGE
- 24

WASTE STORAGE FACILITY



BASEMENT

TITLE

BUILDING 7 - BASEMENT
SITE PLAN

LOCATION

ST. LOUIS V.A. MEDICAL CENTER
JOHN COCHRAN DIVISION
ST. LOUIS, MISSOURI



PROJECT NO.

08-14529

SCALE

1" = 10'

PAGE

1

DRAWN BY

KDB

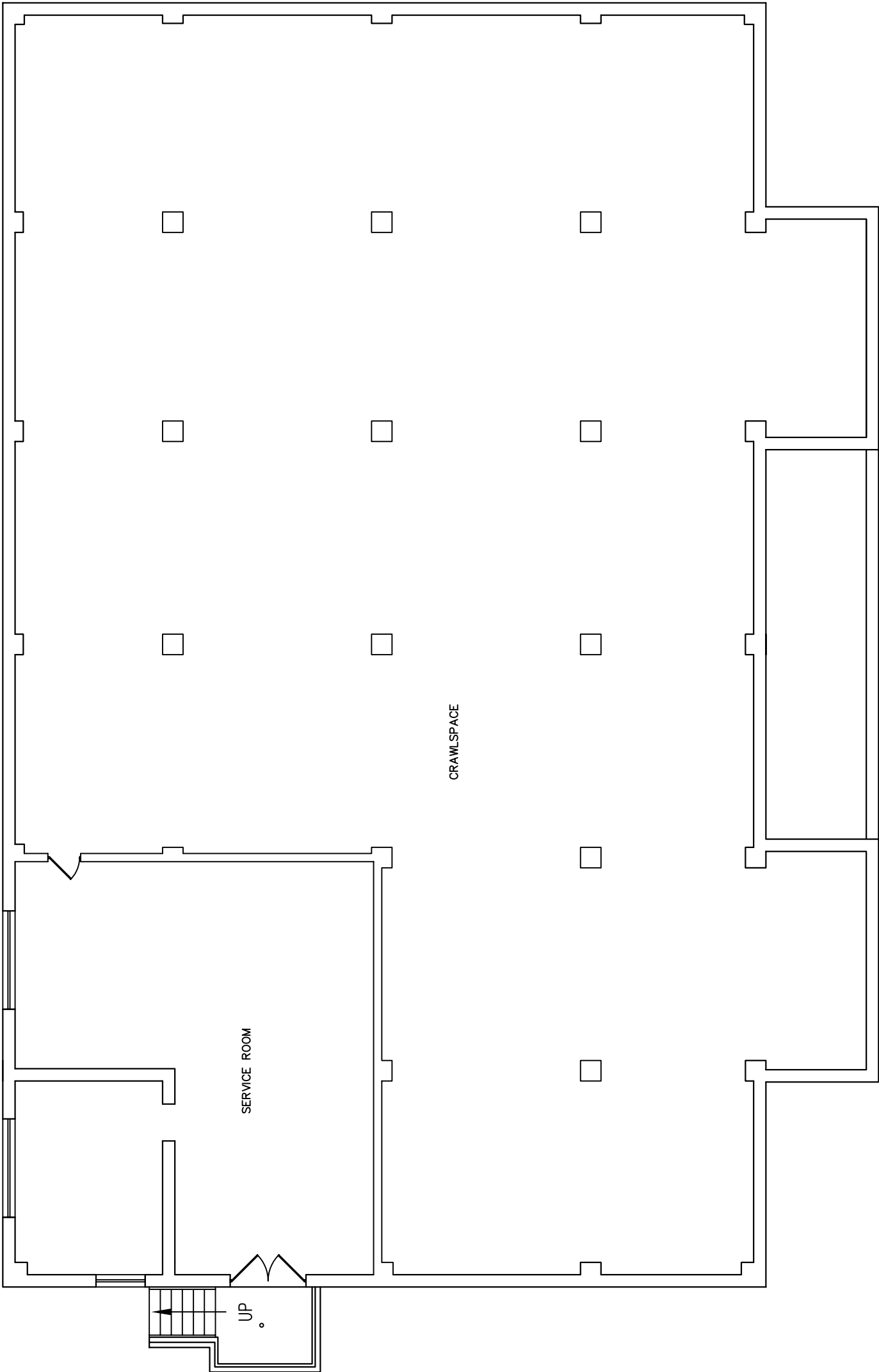
SHEET

B

DATE

08/18/08

F:\Dwgs\08-14529\AS\LouisRehnspecton\Drawings.dwg



BASEMENT FLOOR PLAN



TITLE

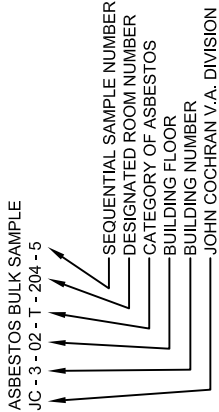
BUILDING 7 - BASEMENT
FLOORING ASBESTOS SAMPLE LOCATIONS

LOCATION

ST. LOUIS V.A. MEDICAL CENTER
JOHN COCHRAN DIVISION
ST. LOUIS, MISSOURI

SAMPLE LOCATION LEGEND

- SAMPLE POSITIVE FOR ACM
- SAMPLE NEGATIVE FOR ACM



MATERIAL LEGEND

- BLACK MASTIC
- YELLOW MASTIC
- CONCRETE
- CERAMIC TILE
- WOOD
- CARPET
- TERRAZZO
- WHITE 12" X 12" FT
- GREEN 12" X 12" FT
- GRAY 12" X 12" FT



FINBACK670



PROJECT NO.

SCALE

08-14529

1" = 10'

PAGE

1

DRAWN BY

KDB

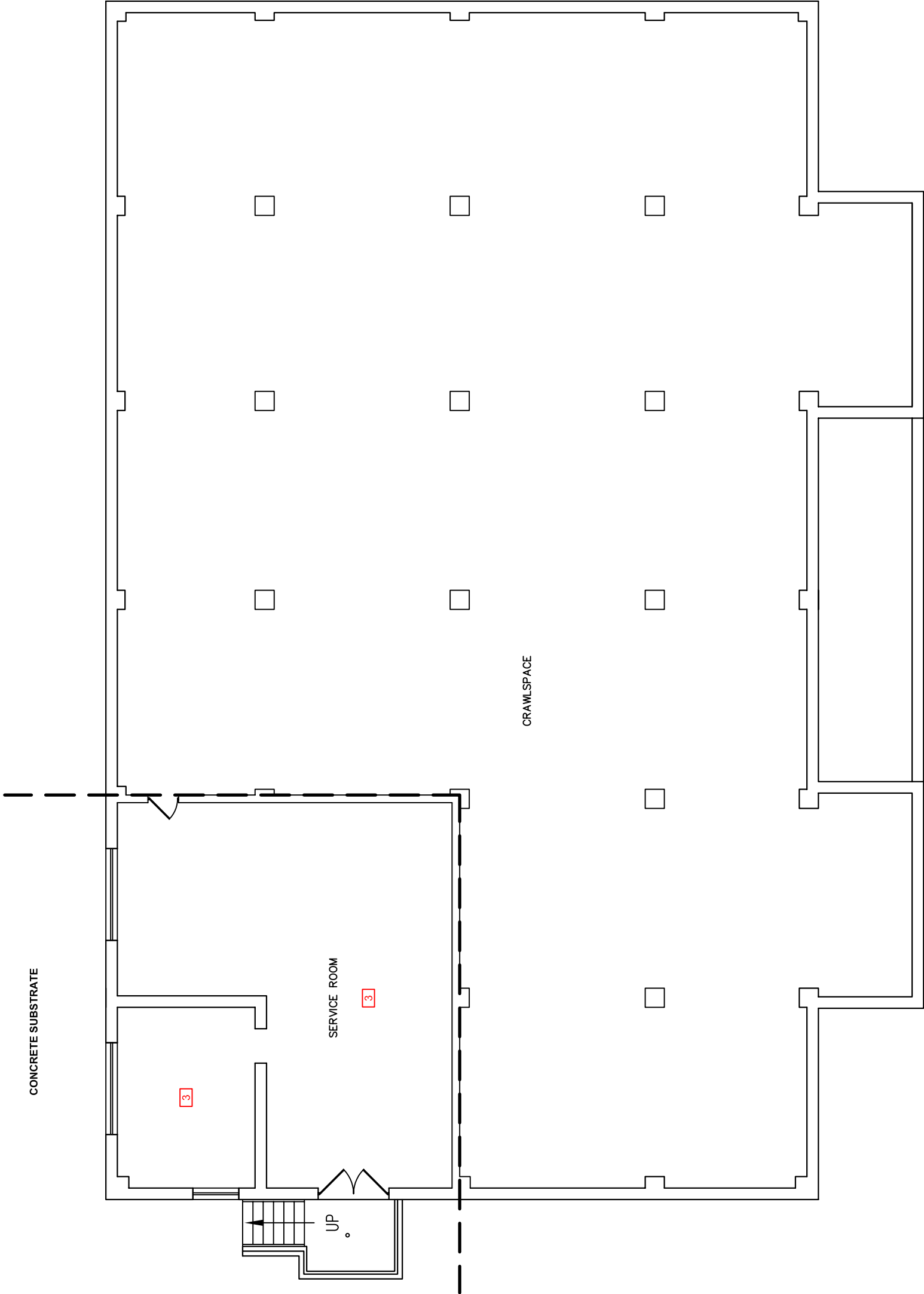
SHEET

B

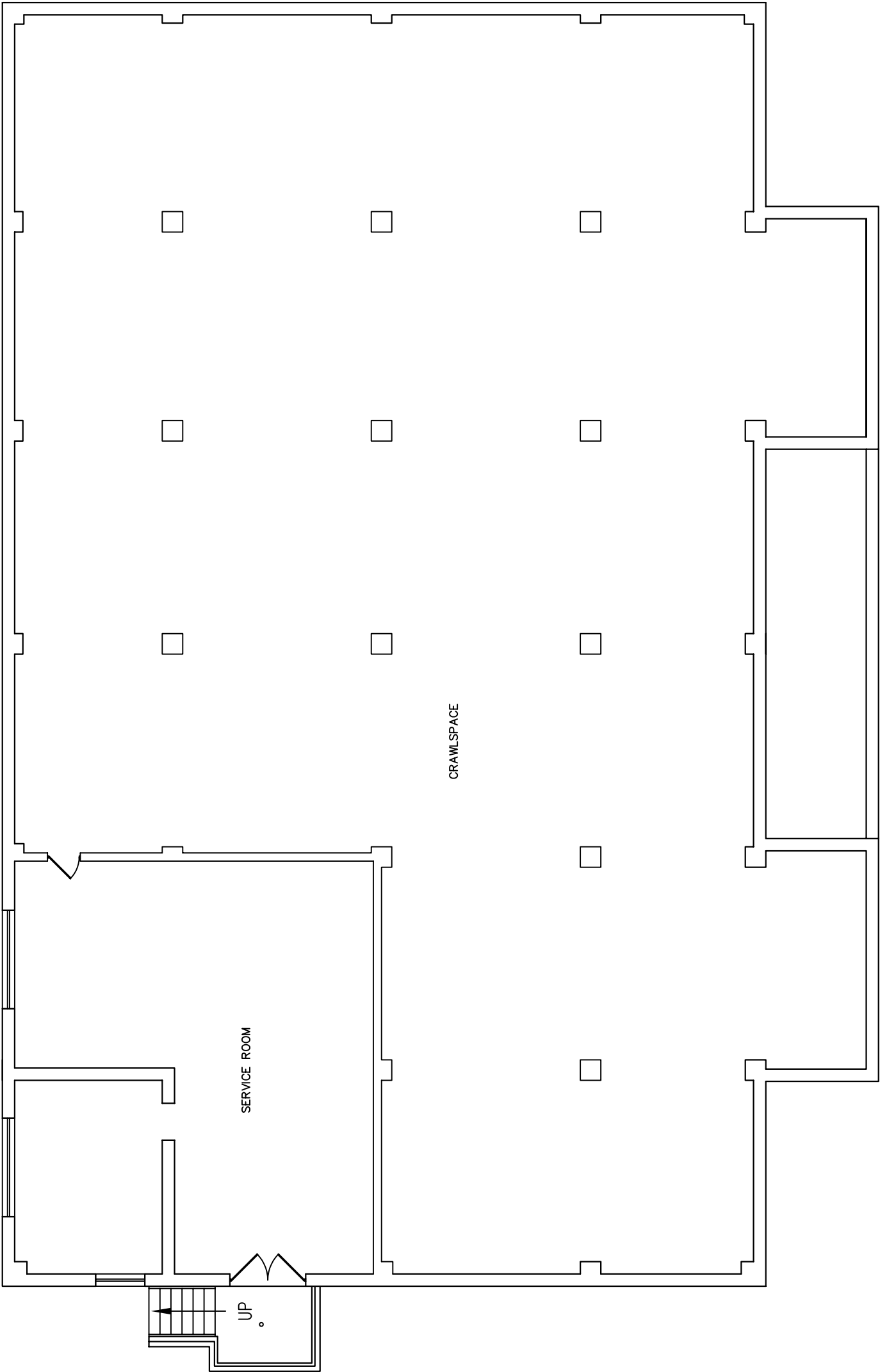
DATE

08/18/08

F:\Dwgs\08-14529\AS\LouisRehnspecton\Drawings.dwg



BASEMENT FLOOR PLAN



BASEMENT FLOOR PLAN

TITLE		BUILDING 7 - BASEMENT SURFACING ASBESTOS SAMPLE LOCATIONS
LOCATION		ST. LOUIS V.A. MEDICAL CENTER JOHN COCHRAN DIVISION ST. LOUIS, MISSOURI
SAMPLE LOCATION LEGEND		<div><div>→</div> SAMPLE POSITIVE FOR ACM</div> <div><div>→</div> SAMPLE NEGATIVE FOR ACM</div> <div>ASBESTOS BULK SAMPLE JC - 3 - 02 - T - 204 - 5</div> <div><div>→</div> SEQUENTIAL SAMPLE NUMBER</div> <div><div>→</div> DESIGNATED ROOM NUMBER</div> <div><div>→</div> CATEGORY OF ASBESTOS</div> <div><div>→</div> BUILDING FLOOR</div> <div><div>→</div> BUILDING NUMBER</div> <div><div>→</div> JOHN COCHRAN V.A. DIVISION</div>



TITLE

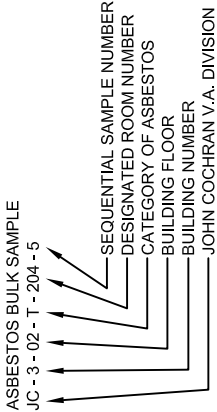
BUILDING 7 - BASEMENT
TSI ASBESTOS SAMPLE LOCATIONS

LOCATION

ST. LOUIS V.A. MEDICAL CENTER
JOHN COCHRAN DIVISION
ST. LOUIS, MISSOURI

SAMPLE LOCATION LEGEND

- SAMPLE POSITIVE FOR ACM
- SAMPLE NEGATIVE FOR ACM



NOTES:

ALL BASEMENT CRAWL SPACE PIPE INSULATION HAS BEEN ABATED. SAMPLES 07 & 08 NO LONGER PRESENT.

SERVICE ROOM HAS 2", 3", 4", 6", & 12" LINES & TANK INSULATION WITH ASBESTOS LABELS FROM PREVIOUS INSPECTION. NO SAMPLES TAKEN.

NO DUCTWORK WAS LOCATED.



PROJECT NO.

08-14529

SCALE

1" = 10'

PAGE

1

DRAWN BY

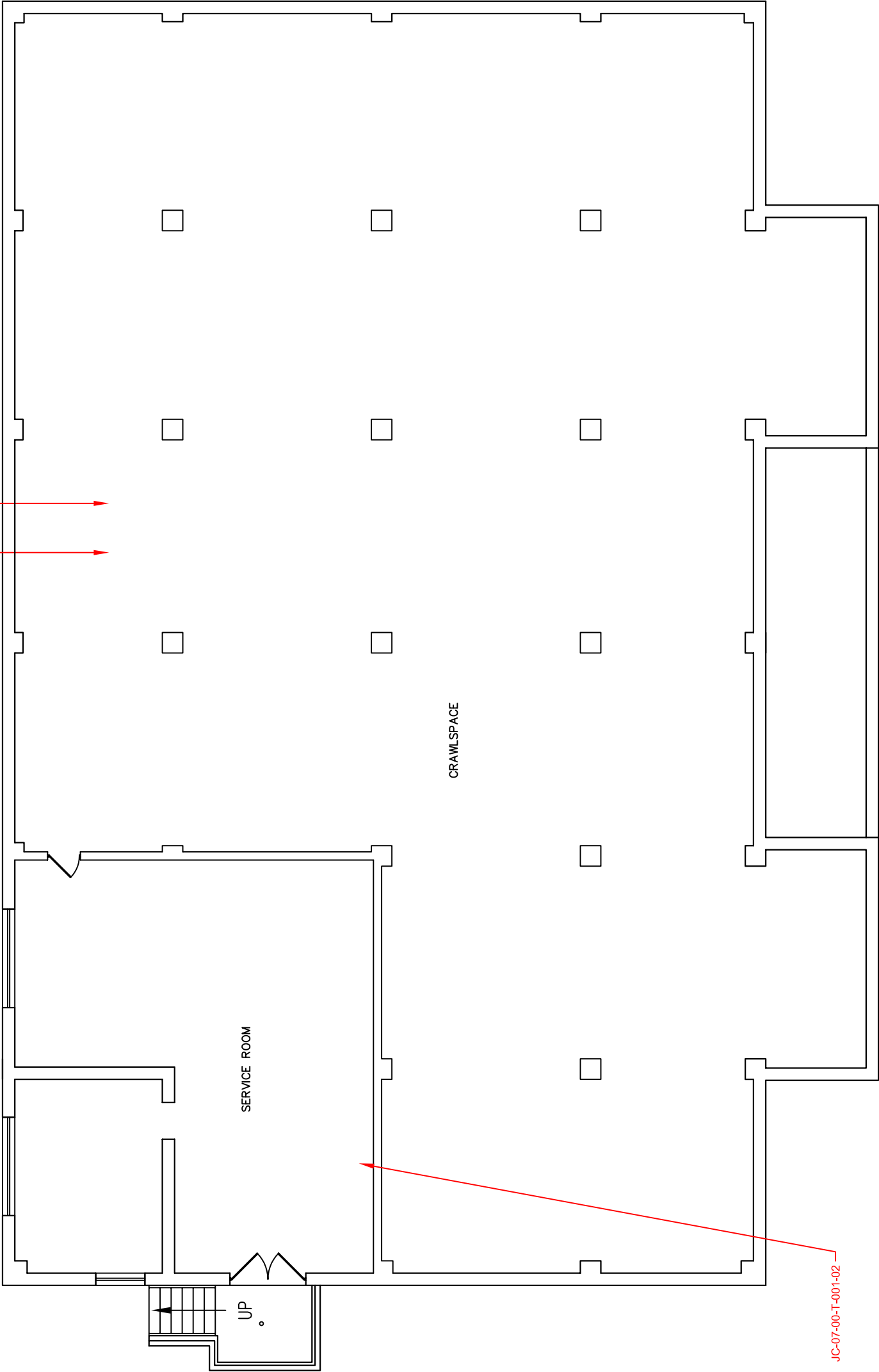
KDB

SHEET

B

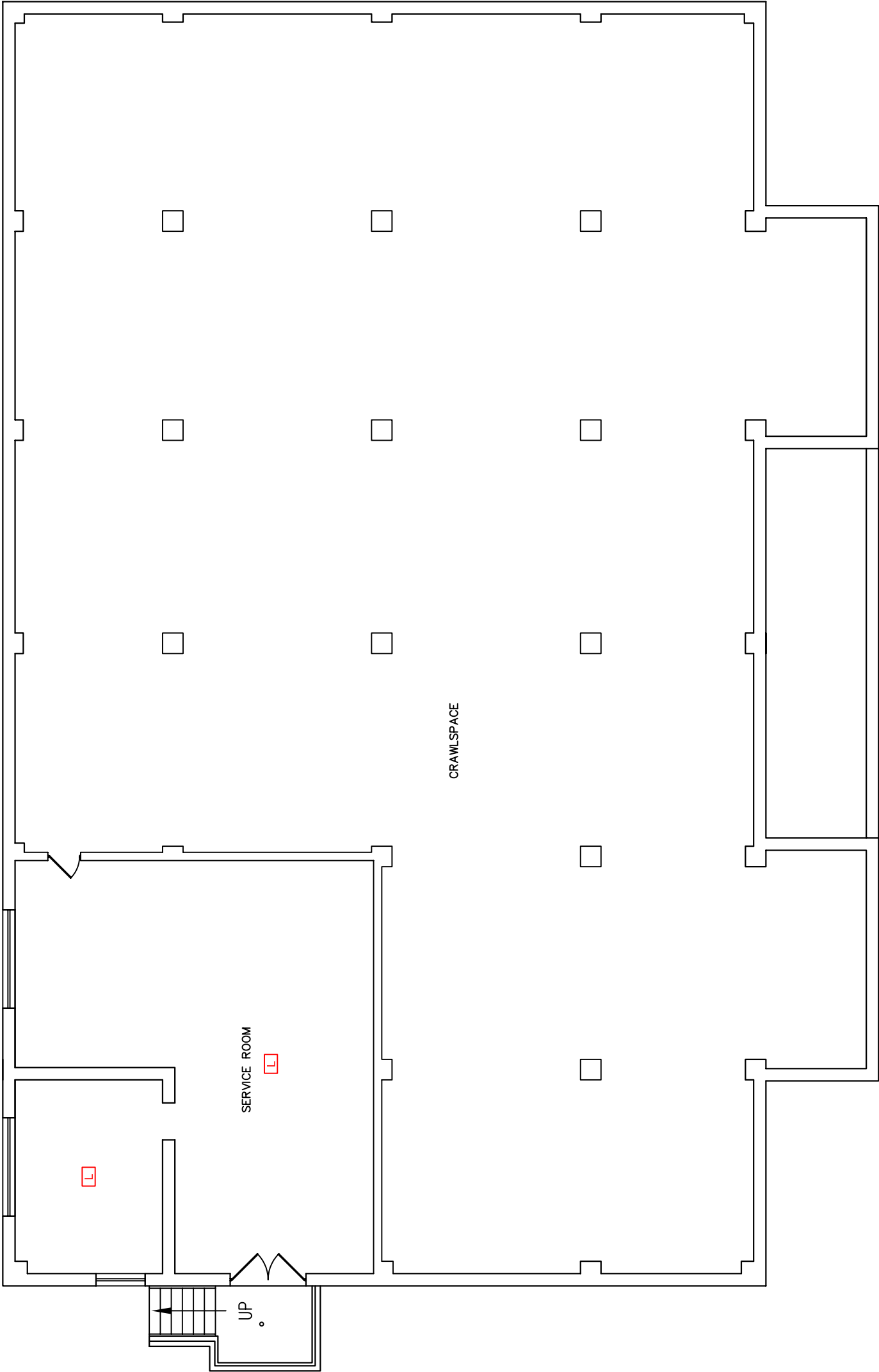
DATE

08/18/08



BASEMENT FLOOR PLAN

Sample ID	Material Description
JC-07-00-T-001-02	Tank insulation
JC-07-00-T-002-08	Magnesia pipe lagging
JC-07-00-T-002-07	Mudded joint fitting on magnesia pipe lagging



TITLE

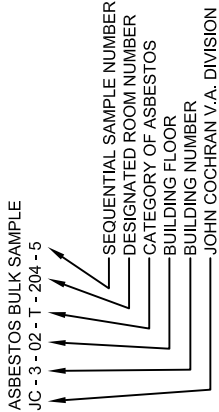
BUILDING 7 - BASEMENT
MISCELLANEOUS ASBESTOS SAMPLE LOCATIONS

LOCATION

ST. LOUIS V.A. MEDICAL CENTER
JOHN COCHRAN DIVISION
ST. LOUIS, MISSOURI

SAMPLE LOCATION LEGEND

- SAMPLE POSITIVE FOR ACM
- SAMPLE NEGATIVE FOR ACM



MATERIAL LEGEND

- 12" X 12" CEILING TILE
- 12" X 12" CEILING TILE W/GLUE DOTS
- 2' X 2' CEILING TILE
- 2' X 4' CEILING TILE
- SHEETROCK
- PLASTER
- TRANSITE
- SPRAY-ON INSULATION
- FIBERGLASS
- WOOD
- METAL
- CONCRETE



PROJECT NO.

08-14529

SCALE

1" = 10'

PAGE

1

DRAWN BY

KDB

SHEET

B

DATE

08/18/08

BASEMENT FLOOR PLAN

1st FLOOR



LOCATION

ST. LOUIS V.A. MEDICAL CENTER
JOHN COCHRAN DIVISION
ST. LOUIS, MISSOURI



08-14529 1" = 15'

PAGE _____ DRAWN BY _____

1 KDB

SHEET _____ DATE _____

08/18/08 B

F:\Dwgs\08-14529\AST.LouisReInspection\Drawings.dwg



BUILDING 7 - FIRST FLOOR
FLOORING ASBESTOS SAMPLE LOCATIONS

LOCATION

ST. LOUIS V.A. MEDICAL CENTER
JOHN COCHRAN DIVISION
ST. LOUIS, MISSOURI

SAMPLE LOCATION LEGEND

→ SAMPLE POSITIVE FOR ACM

→ SAMPLE NEGATIVE FOR ACM

ASBESTOS BULK SAMPLE

JC - 3 - 02 - T - 204 - 5

SEQUENTIAL SAMPLE NUMBER
DESIGNATED ROOM NUMBER
CATEGORY OF ASBESTOS
BUILDING FLOOR
BUILDING NUMBER
JOHN COCHRAN V.A. DIVISION

MATERIAL LEGEND

1	2	3	4	5	6	7	8	9	10	11	12
BLACK MASTIC	YELLOW MASTIC	CONCRETE	CERAMIC TILE	WOOD	CARPET	TERRAZZO	WHITE 12" X 12" FT	GREEN 12" X 12" FT	GRAY 12" X 12" FT		

**FINBACK670**

PROJECT NO.

08-14529

 $1'' = 15'$

PAGE

OWN BY

7

KDB

SHEET

DATE _____

08/18/08

F:\Dwgs\08-14529\ASt.LouisReInspection\Drawings.dwg



Sample ID	Material Description
JC-7-01-F-107-001A	White 12x12 floor tile, black mastic
JC-7-01-F-108-004A	White 12x12 floor tile, black mastic
JC-7-01-F-103-006A	White 12x12 floor tile, black mastic
JC-7-01-F-21-009A	Green 12x12 floor tile, black mastic
JC-7-01-F-10-010A	Gray 12x12 floor tile, black mastic
JC-7-01-F-7A-013A	Gray 12x12 floor tile, black mastic
JC-7-01-F-6-020A	Gray 12x12 floor tile, black mastic
JC-7-01-F-22-025A	Green 12x12 floor tile, black mastic
JC-7-01-F-22-028A	Green 12x12 floor tile, black mastic



SECOND FLOOR PLAN

TITLE	BUILDING 7 - FIRST FLOOR SURFACING ASBESTOS SAMPLE LOCATIONS
LOCATION	ST. LOUIS V.A. MEDICAL CENTER JOHN COCHRAN DIVISION ST. LOUIS, MISSOURI
SAMPLE LOCATION LEGEND	<div><div>→ SAMPLE POSITIVE FOR ACM</div><div>→ SAMPLE NEGATIVE FOR ACM</div><div>ASBESTOS BULK SAMPLE JC - 3 - 02 - T - 204 - 5</div><div>→ SEQUENTIAL SAMPLE NUMBER</div><div>→ DESIGNATED ROOM NUMBER</div><div>→ CATEGORY OF ASBESTOS</div><div>→ BUILDING FLOOR</div><div>→ BUILDING NUMBER</div><div>→ JOHN COCHRAN V.A. DIVISION</div></div>
<div><div></div><div></div></div>	
PROJECT NO.	08-14529
SCALE	1" = 15'
PAGE	1
DRAWN BY	KDB
SHEET	B
DATE	08/18/08

F:\Dwg\08-14529\AS\LouisRahnspecton\Drawings.dwg



TITLE

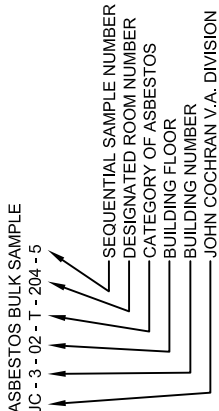
BUILDING 7 - FIRST FLOOR
TSI ASBESTOS SAMPLE LOCATIONS

LOCATION

ST. LOUIS V.A. MEDICAL CENTER
JOHN COCHRAN DIVISION
ST. LOUIS, MISSOURI

SAMPLE LOCATION LEGEND

- SAMPLE POSITIVE FOR ACM
- SAMPLE NEGATIVE FOR ACM



NOTES:
ALL DUCTWORK INSULATION IS FIBERGLASS.



PROJECT NO. 08-14529
SCALE 1" = 15'

PAGE 1
DRAWN BY KDB

SHEET B
DATE 08/18/08



Sample ID	Material Description
JC-7-01-T-21-016A	3" elbow - white wrap, white block insulation
JC-7-01-T-21-017A	3" horizontal - white wrap, yellow insulation
JC-7-01-T-AT-035A	4" T - white wrap, white block insulation
JC-7-01-T-AT-036A	4" horizontal - white wrap, yellow insulation



TITLE

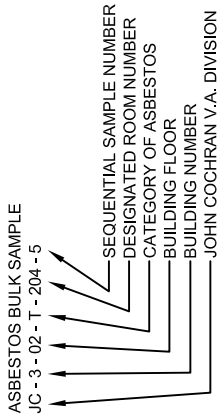
BUILDING 7 - FIRST FLOOR
MISCELLANEOUS ASBESTOS SAMPLE LOCATIONS

LOCATION

ST. LOUIS V.A. MEDICAL CENTER
JOHN COCHRAN DIVISION
ST. LOUIS, MISSOURI

SAMPLE LOCATION LEGEND

- SAMPLE POSITIVE FOR ACM
- SAMPLE NEGATIVE FOR ACM



NOTES:
TRANSITE VENT HOODS ALSO CONTAIN BLACK LAB COUNTERTOPS.

MATERIAL LEGEND

- 12" X 12" CEILING TILE
- 12" X 12" CEILING TILE W/GLUE DOTS
- 2' X 2' CEILING TILE
- 2' X 4' CEILING TILE
- SHEETROCK
- PLASTER
- TRANSITE
- SPRAY-ON INSULATION
- FIBERGLASS
- WOOD
- METAL
- CONCRETE



PROJECT NO.

SCALE

08-14529

1" = 15'

PAGE

DRAWN BY

1

KDB

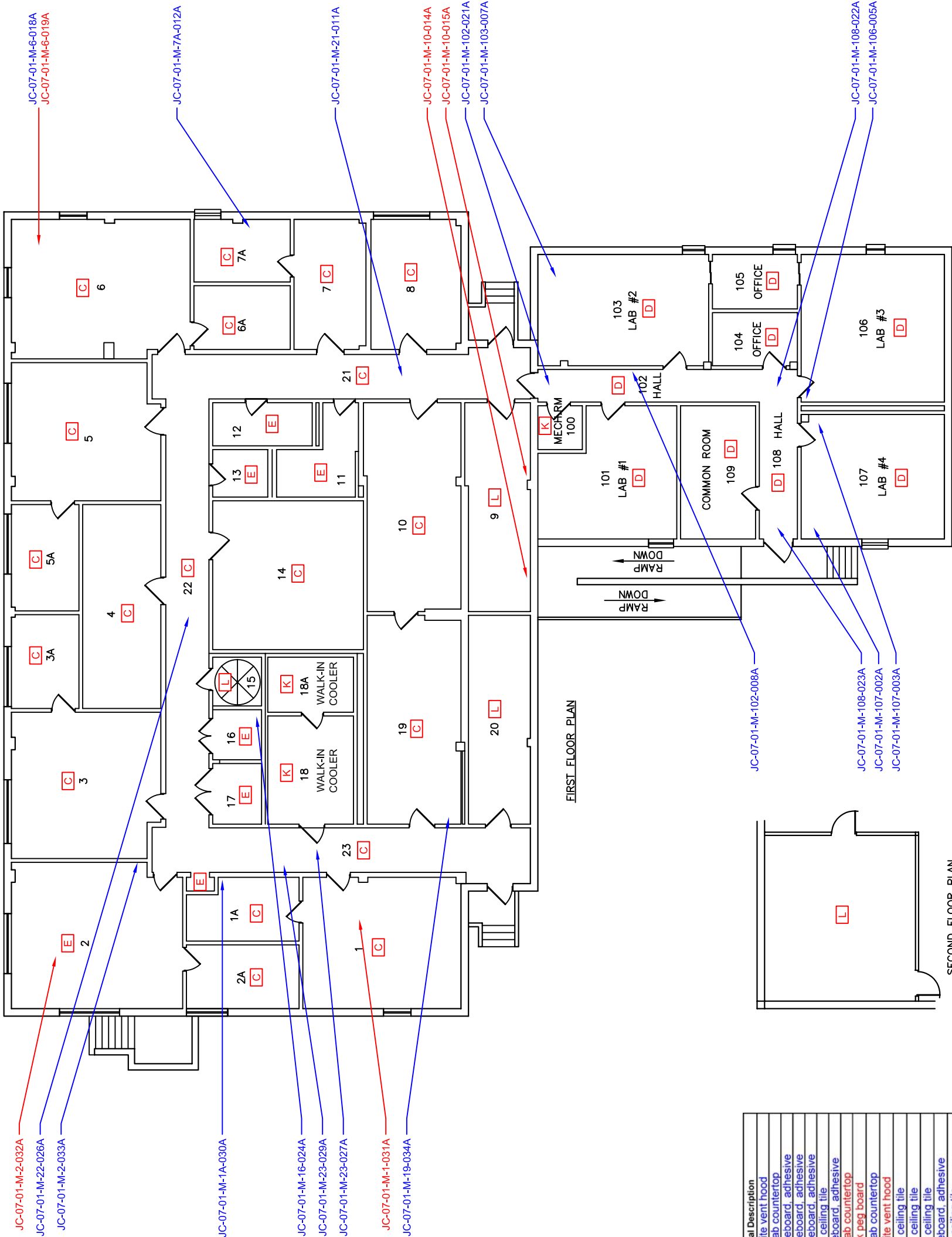
SHEET

DATE

B

08/18/08

F:\Dwgs\08-14529\AS\LouisRehnspecton\Drawings.dwg



Sample ID	Material Description
JC-7-01-M-107-002A	Transite vent hood
JC-7-01-M-107-003A	Black lab countertop
JC-7-01-M-106-005A	Brown baseboard, adhesive
JC-7-01-M-103-007A	Brown baseboard, adhesive
JC-7-01-M-102-008A	Brown baseboard, adhesive
JC-7-01-M-21-011A	2x2 ceiling tile
JC-7-01-M-7A-012A	Gray baseboard, adhesive
JC-7-01-M-10-014A	Black lab countertop
JC-7-01-M-10-015A	Black peg board
JC-7-01-M-6-018A	Black lab countertop
JC-7-01-M-6-019A	Transite vent hood
JC-7-01-M-102-021A	2x4 ceiling tile
JC-7-01-M-108-022A	2x4 ceiling tile
JC-7-01-M-108-023A	2x4 ceiling tile
JC-7-01-M-16-024A	Gray baseboard, adhesive
JC-7-01-M-22-026A	2x2 ceiling tile
JC-7-01-M-23-027A	2x2 ceiling tile
JC-7-01-M-23-029A	Gray baseboard, adhesive
JC-7-01-M-1A-030A	Sheetrock mud
JC-7-01-M-1-031A	Black peg board
JC-7-01-M-2-032A	Black peg board
JC-7-01-M-2-033A	Sheetrock mud
JC-7-01-M-19-034A	Sheetrock mud

F:\Dwgs\08-14529\AS\LouisRehnspecton\Drawings.dwg

2008 Reinspection Photographs

ST. LOUIS V. A. MEDICAL CENTER
JOHN COCHRAN DIVISION
BUILDING 7



JC-7-01-F-107-001A



JC-7-01-M-107-002A



JC-7-01-M-107-003A



JC-7-01-F-106-004A

sample contains asbestos

sample does not contain asbestos

ST. LOUIS V. A. MEDICAL CENTER
JOHN COCHRAN DIVISION
BUILDING 7



JC-7-01-M-106-005A



JC-7-01-F-103-006A



JC-7-01-M-103-007A



JC-7-01-M-102-008A

sample contains asbestos
sample does not contain asbestos

ST. LOUIS V. A. MEDICAL CENTER
JOHN COCHRAN DIVISION
BUILDING 7



JC-7-01-F-21-009A



JC-7-01-F-10-010A



JC-7-01-M-21-011A



JC-7-01-M-7A-012A

sample contains asbestos

sample does not contain asbestos

ST. LOUIS V. A. MEDICAL CENTER
JOHN COCHRAN DIVISION
BUILDING 7



JC-7-01-F-7A-013A



JC-7-01-M-10-014A



JC-7-01-M-10-015A



JC-7-01-T-21-016A and JC-7-01-T-21-017A

sample contains asbestos
sample does not contain asbestos

ST. LOUIS V. A. MEDICAL CENTER
JOHN COCHRAN DIVISION
BUILDING 7



JC-7-01-M-6-018A, JC-7-01-M-6-019A, and JC-7-01-F-6-020A



JC-7-01-M-102-021A



JC-7-01-M-108-022A



JC-7-01-M-108-023A

sample contains asbestos

sample does not contain asbestos

ST. LOUIS V. A. MEDICAL CENTER
JOHN COCHRAN DIVISION
BUILDING 7



JC-7-01-M-16-024A



JC-7-01-F-22-025A



JC-7-01-M-22-026A



JC-7-01-M-23-027A

sample contains asbestos
sample does not contain asbestos

ST. LOUIS V. A. MEDICAL CENTER
JOHN COCHRAN DIVISION
BUILDING 7



JC-7-01-F-22-028A



JC-7-01-M-23-029A



JC-7-01-M-1A-030A



JC-7-01-M-1-031A

sample contains asbestos

sample does not contain asbestos

ST. LOUIS V. A. MEDICAL CENTER
JOHN COCHRAN DIVISION
BUILDING 7



JC-7-01-M-2-032A



JC-7-01-M-2-033A



JC-7-01-M-19-034A



JC-7-01-T-AT-035A and JC-7-01-T-AT-036A

sample contains asbestos

sample does not contain asbestos

2008 Reinspection Laboratory Reports

**EMSL Analytical, Inc.**

11040A Lin-Valle Drive, Saint Louis, MO 63123

Phone: (314) 845-8910 Fax: (314) 845-6459 Email: saintlouislaboratory@emsl.com

Attn: **Roy W. Dowling**
ALTEC Environmental Consultants, Inc.
2920 Truly Lane
Shreveport, LA 71138

Fax: (318) 687-9923 Phone: (318) 687-3771

Project: **08-14529 VAMC Reinspection JC Building 7**

Customer ID: ALT50
Customer PO:
Received: 09/18/08 4:50 PM
EMSL Order: 390804605

EMSL Proj:
Analysis Date: 9/18/2008
Report Date: 9/19/2008

Asbestos Analysis of Bulk Materials via EPA 600/R-93/116 Method using Polarized Light Microscopy

Sample	Location	Appearance	<u>Non-Asbestos</u>		<u>Asbestos</u>
			% Fibrous	% Non-Fibrous	% Type
JC-7-01-F-107-001A floortile 390804605-0001	WHT 12X12 FT W/BLK MASTIC	White Non-Fibrous Heterogeneous		100% Non-fibrous (other)	None Detected
JC-7-01-F-107-001A adhesive 390804605-0001A	WHT 12X12 FT W/BLK MASTIC	Black Non-Fibrous Heterogeneous	9% Cellulose	91% Non-fibrous (other)	None Detected
JC-7-01-M-107-002A 390804605-0002	TRANSITE VENT HOOD	Gray Non-Fibrous Heterogeneous	10% Cellulose 9% Wollastonite	81% Non-fibrous (other)	None Detected
JC-7-01-M-107-003A 390804605-0003	BLK LAB COUNTERTOP	Black Non-Fibrous Heterogeneous	10% Cellulose 9% Wollastonite	81% Non-fibrous (other)	None Detected
JC-7-01-F-106-004A floortile 390804605-0004	WHT 12X12 FT W/BLK MASTIC	White Non-Fibrous Heterogeneous		100% Non-fibrous (other)	None Detected
JC-7-01-F-106-004A adhesive 390804605-0004A	WHT 12X12 FT W/BLK MASTIC	Black Non-Fibrous Heterogeneous	9% Cellulose	91% Non-fibrous (other)	None Detected
JC-7-01-M-106-005A covebase 390804605-0005	BRN BASEBOARD AND ADHESIVE	Brown Non-Fibrous Heterogeneous		100% Non-fibrous (other)	None Detected

Analyst(s)

Sue Ferrario (51)

Jeff Siria, Laboratory Manager
or other approved signatory

Due to magnification limitations inherent in PLM, asbestos fibers in dimensions below the resolution capability of PLM may not be detected. The limit of detection as stated in the method is 1%. The above test report relates only to the items tested and may not be reproduced in any form without the express written approval of EMSL Analytical, Inc. EMSL's liability is limited to the cost of analysis. EMSL bears no responsibility for sample collection activities or analytical method limitations. Interpretation and use of test results are the responsibility of the client. Samples received in good condition unless otherwise noted. This report must not be used to claim product endorsement by NVLAP or any agency of the U.S. Government.

Analysis performed by EMSL St. Louis (AIHA #102636, NVLAP # 200742-0, CA ELAP #2668)

**EMSL Analytical, Inc.**

11040A Lin-Valle Drive, Saint Louis, MO 63123

Phone: (314) 845-8910 Fax: (314) 845-6459 Email: saintlouislalab@emsl.com

Attn: **Roy W. Dowling**
ALTEC Environmental Consultants, Inc.
2920 Truly Lane
Shreveport, LA 71138

Fax: (318) 687-9923 Phone: (318) 687-3771

Project: **08-14529 VAMC Reinspection JC Building 7**

Customer ID: ALT50
Customer PO:
Received: 09/18/08 4:50 PM
EMSL Order: 390804605

EMSL Proj:
Analysis Date: 9/18/2008
Report Date: 9/19/2008

Asbestos Analysis of Bulk Materials via EPA 600/R-93/116 Method using Polarized Light Microscopy

Sample	Location	Appearance	<u>Non-Asbestos</u>		<u>Asbestos</u>
			% Fibrous	% Non-Fibrous	% Type
JC-7-01-M-106-005A adhesive 390804605-0005A	BRN BASEBOARD AND ADHESIVE	Yellow Non-Fibrous Heterogeneous		100% Non-fibrous (other)	None Detected
JC-7-01-F-103-006A floortile 390804605-0006	WHT 12X12 FT W/BLK MASTIC	White Non-Fibrous Heterogeneous		100% Non-fibrous (other)	None Detected
JC-7-01-F-103-006A adhesive 390804605-0006A	WHT 12X12 FT W/BLK MASTIC	Black Non-Fibrous Heterogeneous	9% Cellulose	91% Non-fibrous (other)	None Detected
JC-7-01-M-103-007A covebase 390804605-0007	BRN BASEBOARD AND ADHESIVE	Brown Non-Fibrous Heterogeneous		100% Non-fibrous (other)	None Detected
JC-7-01-M-103-007A adhesive 390804605-0007A	BRN BASEBOARD AND ADHESIVE	Yellow Non-Fibrous Heterogeneous		100% Non-fibrous (other)	None Detected
JC-7-01-M-102-008A covebase 390804605-0008	BRN BASEBOARD AND ADHESIVE	Brown Non-Fibrous Heterogeneous		100% Non-fibrous (other)	None Detected
JC-7-01-M-102-008A adhesive 390804605-0008A	BRN BASEBOARD AND ADHESIVE	Yellow Non-Fibrous Heterogeneous		100% Non-fibrous (other)	None Detected

Analyst(s)

Sue Ferrario (51)

Jeff Siria, Laboratory Manager
or other approved signatory

Due to magnification limitations inherent in PLM, asbestos fibers in dimensions below the resolution capability of PLM may not be detected. The limit of detection as stated in the method is 1%. The above test report relates only to the items tested and may not be reproduced in any form without the express written approval of EMSL Analytical, Inc. EMSL's liability is limited to the cost of analysis. EMSL bears no responsibility for sample collection activities or analytical method limitations. Interpretation and use of test results are the responsibility of the client. Samples received in good condition unless otherwise noted. This report must not be used to claim product endorsement by NVLAP or any agency of the U.S. Government.

Analysis performed by EMSL St. Louis (AIHA #102636, NVLAP # 200742-0, CA ELAP #2668)

**EMSL Analytical, Inc.**

11040A Lin-Valle Drive, Saint Louis, MO 63123

Phone: (314) 845-8910 Fax: (314) 845-6459 Email: saintlouislaboratory@emsl.com

Attn: **Roy W. Dowling**
ALTEC Environmental Consultants, Inc.
2920 Truly Lane
Shreveport, LA 71138

Fax: (318) 687-9923 Phone: (318) 687-3771

Project: **08-14529 VAMC Reinspection JC Building 7**

Customer ID: ALT50
Customer PO:
Received: 09/18/08 4:50 PM
EMSL Order: 390804605

EMSL Proj:
Analysis Date: 9/18/2008
Report Date: 9/19/2008

Asbestos Analysis of Bulk Materials via EPA 600/R-93/116 Method using Polarized Light Microscopy

Sample	Location	Appearance	<u>Non-Asbestos</u>		<u>Asbestos</u>
			% Fibrous	% Non-Fibrous	% Type
JC-7-01-F-21-009A floortile 390804605-0009	GRN 12X12 FT W/BLK MASTIC	Green Non-Fibrous Heterogeneous		94% Non-fibrous (other)	6% Chrysotile
JC-7-01-F-21-009A adhesive 390804605-0009A	GRN 12X12 FT W/BLK MASTIC	Black Non-Fibrous Heterogeneous		89% Non-fibrous (other) 2% Quartz	9% Chrysotile
JC-7-01-F-10-010A floortile 390804605-0010	GREY 12X12 FT W/BLK MASTIC	Gray Non-Fibrous Heterogeneous		91% Non-fibrous (other)	9% Chrysotile
JC-7-01-F-10-010A adhesive 390804605-0010A	GREY 12X12 FT W/BLK MASTIC	Black Non-Fibrous Heterogeneous		86% Non-fibrous (other) 2% Quartz	12% Chrysotile
JC-7-01-M-21-011A 390804605-0011	2X2 CT	Various Fibrous Heterogeneous	28% Cellulose 37% Min. Wool	7% Non-fibrous (other) 28% Perlite	None Detected
JC-7-01-M-7A-012A covebase 390804605-0012	GREY BASEBOARD AND ADHESIVE	Gray Non-Fibrous Heterogeneous		100% Non-fibrous (other)	None Detected
JC-7-01-M-7A-012A adhesive 390804605-0012A	GREY BASEBOARD AND ADHESIVE	Brown Non-Fibrous Heterogeneous		98% Non-fibrous (other) 2% Quartz	None Detected

Analyst(s)

Sue Ferrario (51)

Jeff Siria, Laboratory Manager
or other approved signatory

Due to magnification limitations inherent in PLM, asbestos fibers in dimensions below the resolution capability of PLM may not be detected. The limit of detection as stated in the method is 1%. The above test report relates only to the items tested and may not be reproduced in any form without the express written approval of EMSL Analytical, Inc. EMSL's liability is limited to the cost of analysis. EMSL bears no responsibility for sample collection activities or analytical method limitations. Interpretation and use of test results are the responsibility of the client. Samples received in good condition unless otherwise noted. This report must not be used to claim product endorsement by NVLAP or any agency of the U.S. Government.

Analysis performed by EMSL St. Louis (AIHA #102636, NVLAP # 200742-0, CA ELAP #2668)

**EMSL Analytical, Inc.**

11040A Lin-Valle Drive, Saint Louis, MO 63123

Phone: (314) 845-8910 Fax: (314) 845-6459 Email: saintlouislab@emsl.com

Attn: **Roy W. Dowling**
ALTEC Environmental Consultants, Inc.
2920 Truly Lane
Shreveport, LA 71138

Fax: (318) 687-9923 Phone: (318) 687-3771

Project: **08-14529 VAMC Reinspection JC Building 7**

Customer ID: ALT50
Customer PO:
Received: 09/18/08 4:50 PM
EMSL Order: 390804605

EMSL Proj:
Analysis Date: 9/18/2008
Report Date: 9/19/2008

Asbestos Analysis of Bulk Materials via EPA 600/R-93/116 Method using Polarized Light Microscopy

Sample	Location	Appearance	<u>Non-Asbestos</u>		<u>Asbestos</u>
			% Fibrous	% Non-Fibrous	% Type
JC-7-01-F-7A-013A floortile 390804605-0013	GREY 12X12 FT W/BLK MASTIC	Gray Non-Fibrous Heterogeneous		91% Non-fibrous (other)	9% Chrysotile
JC-7-01-F-7A-013A adhesive 390804605-0013A	GREY 12X12 FT W/BLK MASTIC	Black Non-Fibrous Heterogeneous		89% Non-fibrous (other) 2% Quartz	9% Chrysotile
JC-7-01-M-10-014A 390804605-0014	BLK LAB COUNTERTOP	Black Non-Fibrous Heterogeneous		81% Non-fibrous (other)	<1% Amosite 19% Chrysotile
JC-7-01-M-10-015A 390804605-0015	BLK PEG BOARD	Black Non-Fibrous Heterogeneous		71% Non-fibrous (other)	29% Chrysotile
JC-7-01-T-21-016A 390804605-0016	3" ELBOW, WHT WRAP, WHT BLOCK INS	White Non-Fibrous Heterogeneous	18% Fibrous (other) 27% Min. Wool	55% Non-fibrous (other)	None Detected
JC-7-01-T-21-017A 390804605-0017	3" HZ, WHT WRAP, YLW INS	Various Fibrous Heterogeneous	4% Cellulose 2% Glass 86% Min. Wool	8% Non-fibrous (other)	None Detected
JC-7-01-M-6-018A 390804605-0018	BLK LAB COUNTERTOP	Black Non-Fibrous Heterogeneous		81% Non-fibrous (other) 19% Quartz	None Detected

Analyst(s)

Sue Ferrario (51)

Jeff Siria, Laboratory Manager
or other approved signatory

Due to magnification limitations inherent in PLM, asbestos fibers in dimensions below the resolution capability of PLM may not be detected. The limit of detection as stated in the method is 1%. The above test report relates only to the items tested and may not be reproduced in any form without the express written approval of EMSL Analytical, Inc. EMSL's liability is limited to the cost of analysis. EMSL bears no responsibility for sample collection activities or analytical method limitations. Interpretation and use of test results are the responsibility of the client. Samples received in good condition unless otherwise noted. This report must not be used to claim product endorsement by NVLAP or any agency of the U.S. Government.

Analysis performed by EMSL St. Louis (AIHA #102636, NVLAP # 200742-0, CA ELAP #2668)

**EMSL Analytical, Inc.**

11040A Lin-Valle Drive, Saint Louis, MO 63123

Phone: (314) 845-8910 Fax: (314) 845-6459 Email: saintlouislab@emsl.com

Attn: **Roy W. Dowling**
ALTEC Environmental Consultants, Inc.
2920 Truly Lane
Shreveport, LA 71138

Fax: (318) 687-9923 Phone: (318) 687-3771

Project: **08-14529 VAMC Reinspection JC Building 7**

Customer ID: ALT50
Customer PO:
Received: 09/18/08 4:50 PM
EMSL Order: 390804605

EMSL Proj:
Analysis Date: 9/18/2008
Report Date: 9/19/2008

Asbestos Analysis of Bulk Materials via EPA 600/R-93/116 Method using Polarized Light Microscopy

Sample	Location	Appearance	<u>Non-Asbestos</u>		<u>Asbestos</u>
			% Fibrous	% Non-Fibrous	% Type
JC-7-01-M-6-019A 390804605-0019	TRANSITE VENT HOOD	Gray Non-Fibrous Heterogeneous		81% Non-fibrous (other)	19% Chrysotile
JC-7-01-F-6-020A floortile 390804605-0020	GREY 12X12 FT W/BLK MASTIC	Gray Non-Fibrous Heterogeneous		88% Non-fibrous (other)	12% Chrysotile
JC-7-01-F-6-020A adhesive 390804605-0020A	GREY 12X12 FT W/BLK MASTIC	Black Non-Fibrous Heterogeneous		88% Non-fibrous (other)	12% Chrysotile
JC-7-01-M-102-021A 390804605-0021	2X4 CT	Various Fibrous Heterogeneous	28% Cellulose 37% Min. Wool	7% Non-fibrous (other) 28% Perlite	None Detected
JC-7-01-M-108-022A 390804605-0022	2X4 CT	Various Fibrous Heterogeneous	28% Cellulose 37% Min. Wool	7% Non-fibrous (other) 28% Perlite	None Detected
JC-7-01-M-108-023A 390804605-0023	2X4 CT	Various Fibrous Heterogeneous	28% Cellulose 37% Min. Wool	7% Non-fibrous (other) 28% Perlite	None Detected
JC-7-01-M-16-024A covebase 390804605-0024	GREY BASEBOARD AND ADHESIVE	Gray Non-Fibrous Heterogeneous		100% Non-fibrous (other)	None Detected

Analyst(s)

Sue Ferrario (51)

Jeff Siria, Laboratory Manager
or other approved signatory

Due to magnification limitations inherent in PLM, asbestos fibers in dimensions below the resolution capability of PLM may not be detected. The limit of detection as stated in the method is 1%. The above test report relates only to the items tested and may not be reproduced in any form without the express written approval of EMSL Analytical, Inc. EMSL's liability is limited to the cost of analysis. EMSL bears no responsibility for sample collection activities or analytical method limitations. Interpretation and use of test results are the responsibility of the client. Samples received in good condition unless otherwise noted. This report must not be used to claim product endorsement by NVLAP or any agency of the U.S. Government.

Analysis performed by EMSL St. Louis (AIHA #102636, NVLAP # 200742-0, CA ELAP #2668)

**EMSL Analytical, Inc.**

11040A Lin-Valle Drive, Saint Louis, MO 63123

Phone: (314) 845-8910 Fax: (314) 845-6459 Email: saintlouislalab@emsl.com

Attn: **Roy W. Dowling**
ALTEC Environmental Consultants, Inc.
2920 Truly Lane
Shreveport, LA 71138

Fax: (318) 687-9923 Phone: (318) 687-3771

Project: **08-14529 VAMC Reinspection JC Building 7**

Customer ID: ALT50
Customer PO:
Received: 09/18/08 4:50 PM
EMSL Order: 390804605

EMSL Proj:
Analysis Date: 9/18/2008
Report Date: 9/19/2008

Asbestos Analysis of Bulk Materials via EPA 600/R-93/116 Method using Polarized Light Microscopy

Sample	Location	Appearance	<u>Non-Asbestos</u>		<u>Asbestos</u>
			% Fibrous	% Non-Fibrous	% Type
JC-7-01-M-16-024A adhesive 390804605-0024A	GREY BASEBOARD AND ADHESIVE	Brown Non-Fibrous Heterogeneous		98% Non-fibrous (other) 2% Quartz	None Detected
JC-7-01-F-22-025A floortile 390804605-0025	GRN 12X12 FT W/BLK MASTIC	Green Non-Fibrous Heterogeneous		94% Non-fibrous (other)	6% Chrysotile
JC-7-01-F-22-025A adhesive 390804605-0025A	GRN 12X12 FT W/BLK MASTIC	Black Non-Fibrous Heterogeneous		79% Non-fibrous (other) 2% Quartz	19% Chrysotile
JC-7-01-M-22-026A 390804605-0026	2X2 CT	Various Fibrous Heterogeneous	28% Cellulose 37% Min. Wool	7% Non-fibrous (other) 28% Perlite	None Detected
JC-7-01-M-23-027A 390804605-0027	2X2 CT	Various Fibrous Heterogeneous	28% Cellulose 37% Min. Wool	7% Non-fibrous (other) 28% Perlite	None Detected
JC-7-01-F-22-028A floortile 390804605-0028	GRN 12X12 FT W/BLK MASTIC	Green Non-Fibrous Heterogeneous		94% Non-fibrous (other)	6% Chrysotile
JC-7-01-F-22-028A adhesive 390804605-0028A	GRN 12X12 FT W/BLK MASTIC	Black Non-Fibrous Heterogeneous		86% Non-fibrous (other) 2% Quartz	12% Chrysotile

Analyst(s)

Sue Ferrario (51)

Jeff Siria, Laboratory Manager
or other approved signatory

Due to magnification limitations inherent in PLM, asbestos fibers in dimensions below the resolution capability of PLM may not be detected. The limit of detection as stated in the method is 1%. The above test report relates only to the items tested and may not be reproduced in any form without the express written approval of EMSL Analytical, Inc. EMSL's liability is limited to the cost of analysis. EMSL bears no responsibility for sample collection activities or analytical method limitations. Interpretation and use of test results are the responsibility of the client. Samples received in good condition unless otherwise noted. This report must not be used to claim product endorsement by NVLAP or any agency of the U.S. Government.

Analysis performed by EMSL St. Louis (AIHA #102636, NVLAP # 200742-0, CA ELAP #2668)

**EMSL Analytical, Inc.**

11040A Lin-Valle Drive, Saint Louis, MO 63123

Phone: (314) 845-8910 Fax: (314) 845-6459 Email: saintlouislalab@emsl.com

Attn: **Roy W. Dowling**
ALTEC Environmental Consultants, Inc.
2920 Truly Lane
Shreveport, LA 71138

Fax: (318) 687-9923 Phone: (318) 687-3771

Project: **08-14529 VAMC Reinspection JC Building 7**

Customer ID: ALT50
Customer PO:
Received: 09/18/08 4:50 PM
EMSL Order: 390804605

EMSL Proj:
Analysis Date: 9/18/2008
Report Date: 9/19/2008

Asbestos Analysis of Bulk Materials via EPA 600/R-93/116 Method using Polarized Light Microscopy

Sample	Location	Appearance	<u>Non-Asbestos</u>		<u>Asbestos</u>
			% Fibrous	% Non-Fibrous	% Type
JC-7-01-M-23-029A covebase 390804605-0029	GREY BASEBOARD AND ADHESIVE	Gray Non-Fibrous Heterogeneous		100% Non-fibrous (other)	None Detected
JC-7-01-M-23-029A adhesive 390804605-0029A	GREY BASEBOARD AND ADHESIVE	Brown Non-Fibrous Heterogeneous		94% Non-fibrous (other) 6% Quartz	None Detected
JC-7-01-M-1A-030A 390804605-0030	SHEETROCK MUD	White Non-Fibrous Heterogeneous		4% Mica 96% Non-fibrous (other)	None Detected
JC-7-01-M-1-031A 390804605-0031	BLK PEG BOARD	Black Non-Fibrous Heterogeneous		81% Non-fibrous (other)	<1% Amosite 19% Chrysotile
JC-7-01-M-2-032A 390804605-0032	BLK PEG BOARD	Black Non-Fibrous Heterogeneous		81% Non-fibrous (other)	<1% Amosite 19% Chrysotile
JC-7-01-M-2-033A 390804605-0033	SHEETROCK MUD	White Non-Fibrous Heterogeneous		4% Mica 96% Non-fibrous (other)	<1% Chrysotile
JC-7-01-M-19-034A 390804605-0034	SHEETROCK MUD	White Non-Fibrous Heterogeneous		4% Mica 96% Non-fibrous (other)	<1% Chrysotile

Analyst(s)

Sue Ferrario (51)

Jeff Siria, Laboratory Manager
or other approved signatory

Due to magnification limitations inherent in PLM, asbestos fibers in dimensions below the resolution capability of PLM may not be detected. The limit of detection as stated in the method is 1%. The above test report relates only to the items tested and may not be reproduced in any form without the express written approval of EMSL Analytical, Inc. EMSL's liability is limited to the cost of analysis. EMSL bears no responsibility for sample collection activities or analytical method limitations. Interpretation and use of test results are the responsibility of the client. Samples received in good condition unless otherwise noted. This report must not be used to claim product endorsement by NVLAP or any agency of the U.S. Government.

Analysis performed by EMSL St. Louis (AIHA #102636, NVLAP # 200742-0, CA ELAP #2668)

**EMSL Analytical, Inc.**

11040A Lin-Valle Drive, Saint Louis, MO 63123

Phone: (314) 845-8910 Fax: (314) 845-6459 Email: saintlouislab@emsl.com

Attn: **Roy W. Dowling**
ALTEC Environmental Consultants, Inc.
2920 Truly Lane
Shreveport, LA 71138

Fax: (318) 687-9923 Phone: (318) 687-3771

Project: **08-14529 VAMC Reinspection JC Building 7**

Customer ID: ALT50
Customer PO:
Received: 09/18/08 4:50 PM
EMSL Order: 390804605

EMSL Proj:
Analysis Date: 9/18/2008
Report Date: 9/19/2008

Asbestos Analysis of Bulk Materials via EPA 600/R-93/116 Method using Polarized Light Microscopy

Sample	Location	Appearance	<u>Non-Asbestos</u>		<u>Asbestos</u>
			% Fibrous	% Non-Fibrous	% Type
JC-7-01-T-AT-035A 390804605-0035	4" T, WHT WRAP, WHT BLOCK INS	White Non-Fibrous Heterogeneous	18% Fibrous (other) 27% Min. Wool	55% Non-fibrous (other)	None Detected
JC-7-01-T-AT-036A 390804605-0036	4" HZ, WHT WRAP, YLW INS	Various Fibrous Heterogeneous	4% Cellulose 2% Glass 86% Min. Wool	8% Non-fibrous (other)	None Detected

Analyst(s)

Sue Ferrario (51)

Jeff Siria, Laboratory Manager
or other approved signatory

Due to magnification limitations inherent in PLM, asbestos fibers in dimensions below the resolution capability of PLM may not be detected. The limit of detection as stated in the method is 1%. The above test report relates only to the items tested and may not be reproduced in any form without the express written approval of EMSL Analytical, Inc. EMSL's liability is limited to the cost of analysis. EMSL bears no responsibility for sample collection activities or analytical method limitations. Interpretation and use of test results are the responsibility of the client. Samples received in good condition unless otherwise noted. This report must not be used to claim product endorsement by NVLAP or any agency of the U.S. Government.

Analysis performed by EMSL St. Louis (AIHA #102636, NVLAP # 200742-0, CA ELAP #2668)

Certifications

STATE OF LOUISIANA
DEPARTMENT OF ENVIRONMENTAL QUALITY

certifies that

BRANDON ODOM

Has complied with all requirements of the Louisiana Department of Environmental Quality
and is authorized to perform the duties of

ASBESTOS INSPECTOR

Certificate No. 9101392

AI No. 149011

Issued 2/18/2008

Expires 2/7/2009

Failure to comply with all applicable provisions of La. R.S. 2025.E. (1)(a) and La. R.S. 2025.F. (2)(a)
may result in civil and/or criminal enforcement actions by the State.



Environmental Scientist Senior
OES, Air Permits Division

ALTEC TRAINING SERVICES

This is to certify that

BRANDON ODOM

*has successfully completed the required 4 hours of refresher training
under Section 206 of TSCA, Title II, 15 U.S.C. 2646, for*

Asbestos Inspector

*as approved by the State of Louisiana and U.S.E.P.A. under 40 CFR 763 (AHERA)
on February 5, 2008, in Shreveport, Louisiana.*

Certificate Number: 080361R009384488

Accreditation expires: February 5, 2009

Examination date: N/A



Roy W. Dowling, Training Manager
DEQ Certification No. A07T0286

ALTEC Environmental Consultants, Inc. ♦ P.O. Box 17867 ♦ Shreveport, Louisiana 71138-0867 ♦ (318) 687-3771

STATE OF LOUISIANA
DEPARTMENT OF ENVIRONMENTAL QUALITY

certifies that

DONALD R JOINER

Has complied with all requirements of the Louisiana Department of Environmental Quality
and is authorized to perform the duties of

ASBESTOS INSPECTOR

Certificate No. 8101348

AI No. 112937

Issued 9/5/2007

Expires 9/29/2008

Failure to comply with all applicable provisions of La. R.S. 2025 E. (1)(a) and La. R.S. 2025 F. (2)(a)
may result in civil and/or criminal enforcement actions by the State.

Joseph A. Miller
Environmental Scientist Manager
Air Permits Division - Manufacturing
Asbestos and Lead

LOUISIANA

STATE OF LOUISIANA
DEPARTMENT OF ENVIRONMENTAL QUALITY

certifies that

DONALD R JOINER

Has complied with all requirements of the Louisiana Department of Environmental Quality
and is authorized to perform the duties of

ASBESTOS INSPECTOR

Accreditation No. 9101348

AI No. 112937

Date of Issuance 8/20/2008

Expiration 9/29/2009

Failure to comply with all applicable provisions of La. R.S. 2025.E. (1)(a) and La. R.S. 2025.F. (2)(a)
may result in civil and/or criminal enforcement actions by the State.



Air Permits Division
Office of Environmental Services

ALTEC TRAINING SERVICES

This is to certify that

DONALD JOINER

*has successfully completed the required 4 hours of refresher training
under Section 206 of TSCA, Title II, 15 U.S.C. 2646, for*

Asbestos Inspector

*as approved by the State of Louisiana and U.S.E.P.A. under 40 CFR 763 (AHERA)
on August 8, 2008, in Shreveport, Louisiana.*

Certificate Number: 08135IR003036858

Accreditation expires: August 8, 2009

Examination date: N/A

Keith L. Callender

**Keith L. Callender, Instructor
DEQ Certification No. A09T0118**

Roy W. Dowling

**Roy W. Dowling, Training Manager
DEQ Certification No. A08T0286**

ALTEC Environmental Consultants, Inc. ♦ P.O. Box 17867 ♦ Shreveport, Louisiana 71138-0867 ♦ (318) 687-3771

STATE OF LOUISIANA
DEPARTMENT OF ENVIRONMENTAL QUALITY

certifies that

ERIC CLIPPS

Has complied with all requirements of the Louisiana Department of Environmental Quality
and is authorized to perform the duties of

ASBESTOS INSPECTOR

Accreditation No. 9101588

AI No. 160418

Date of Issuance 9/10/2008

Expiration 9/4/2009

Failure to comply with all applicable provisions of La. R.S. 2025.E. (1)(a) and La. R.S. 2025.F. (2)(a)
may result in civil and/or criminal enforcement actions by the State.



Air Permits Division
Office of Environmental Services

ALTEC TRAINING SERVICES

This is to certify that

ERIC CLIPPS

*has successfully completed the required 24 hours of initial training
under Section 206 of TSCA, Title II, 15 U.S.C. 2646, for*

Asbestos Inspector

*as approved by the State of Louisiana and U.S.E.P.A. under 40 CFR 763 (AHERA)
on September 2 - September 4, 2008, in Shreveport, Louisiana.*

Certificate Number: 082481009471854LA
Accreditation expires: September 4, 2009
Examination date: September 4, 2008



Roy W. Dowling, Training Manager
DEQ Certification No. A08T0286

ALTEC Environmental Consultants, Inc. ♦ P.O. Box 17867 ♦ Shreveport, Louisiana 71138-0867 ♦ (318) 687-3771

STATE OF LOUISIANA
DEPARTMENT OF ENVIRONMENTAL QUALITY

certifies that

JOSHUA ANDERS

Has complied with all requirements of the Louisiana Department of Environmental Quality
and is authorized to perform the duties of

ASBESTOS INSPECTOR

AI No. 160417

Accreditation No. 9101589

Expiration 9/4/2009

Date of Issuance 9/10/2008

Failure to comply with all applicable provisions of La. R.S. 2025.E. (1)(a) and La. R.S. 2025.F. (2)(e)
may result in civil and/or criminal enforcement actions by the State.



Air Permits Division
Office of Environmental Services

ALTEC TRAINING SERVICES

This is to certify that

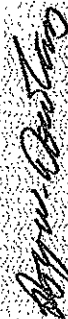
JOSHUA ANDERS

*has successfully completed the required 24 hours of initial training
under Section 206 of TSCA, Title II, 15 U.S.C. 2646, for*

Asbestos Inspector

*as approved by the State of Louisiana and U.S.E.P.A. under 40 CFR 763 (AHERA)
on September 2 — September 4, 2008, in Shreveport, Louisiana.*

Certificate Number: 08248117104493TX
Accreditation expires: September 4, 2009
Examination date: September 4, 2008



Roy W. Dowling, Training Manager
DEQ Certification No. A08T0286

ALTEC Environmental Consultants, Inc. ♦ P.O. Box 17867 ♦ Shreveport, Louisiana 71138-0867 ♦ (318) 687-3771

STATE OF LOUISIANA
DEPARTMENT OF ENVIRONMENTAL QUALITY

certifies that

JUSTIN L HOLCOMB

Has complied with all requirements of the Louisiana Department of Environmental Quality
and is authorized to perform the duties of

ASBESTOS INSPECTOR

AI No. 112785

Accreditation No. 9100306

Expiration 5/22/2009

Date of Issuance 5/27/2008

Failure to comply with all applicable provisions of La. R.S. 2025.E. (1)(a) and La. R.S. 2025.F. (2)(a)
may result in civil and/or criminal enforcement actions by the State.



Air Permits Division
Office of Environmental Services

ALTEC TRAINING SERVICES

This is to certify that

JUSTIN L. HOLCOMB

*has successfully completed the required 4 hours of refresher training
under Section 206 of TSCA, Title II, 15 U.S.C. 2646, for*

Asbestos Inspector

*as approved by the State of Louisiana and U.S.E.P.A. under 40 CFR 763 (AHERA)
on May 14, 2008, in Shreveport, Louisiana.*

Certificate Number: 08135CSR006764980

Accreditation expires: May 14, 2009

Examination date: N/A

Gray Chase

Gray Chase, Instructor

DEQ Certification No. A09T0013

Roy W. Dowling

Roy W. Dowling, Training Manager

DEQ Certification No. A08T0286

ALTEC Environmental Consultants, Inc. ♦ P.O. Box 17867 ♦ Shreveport, Louisiana 71138-0867 ♦ (318) 687-3771

STATE OF LOUISIANA
DEPARTMENT OF ENVIRONMENTAL QUALITY

certifies that

ROY W DOWLING

Has complied with all requirements of the Louisiana Department of Environmental Quality
and is authorized to perform the duties of

ASBESTOS INSPECTOR


AI No. 94796

Accreditation No. 9100213

Expiration 6/26/2009

Date of Issuance 5/27/2008

Failure to comply with all applicable provisions of La. R.S. 2025.E. (1)(a) and La. R.S. 2025.F. (2)(a)
may result in civil and/or criminal enforcement actions by the State.



Air Permits Division
Office of Environmental Services

STATE OF LOUISIANA
DEPARTMENT OF ENVIRONMENTAL QUALITY

certifies that

ROY W DOWLING

Has complied with all requirements of the Louisiana Department of Environmental Quality
and is authorized to perform the duties of

ASBESTOS PROJECT DESIGNER

AI No. 94796

Accreditation No. 9D00078

Expiration 8/10/2009

Date of Issuance 8/13/2008

Failure to comply with all applicable provisions of La. R.S. 2025.E. (1)(a) and La. R.S. 2025.F. (2)(a)
may result in civil and/or criminal enforcement actions by the State.



Air Permits Division
Office of Environmental Services

STATE OF LOUISIANA
DEPARTMENT OF ENVIRONMENTAL QUALITY

certifies that

ROY W DOWLING

Has complied with all requirements of the Louisiana Department of Environmental Quality
and is authorized to perform the duties of

ASBESTOS MANAGEMENT PLANNER

AI No. 94796

Accreditation No. 9P00072

Expiration 10/3/2009

Date of Issuance 8/13/2008

Failure to comply with all applicable provisions of La. R.S. 2025.E. (1)(a) and La. R.S. 2025.F. (2)(a)
may result in civil and/or criminal enforcement actions by the State.



Air Permits Division
Office of Environmental Services

ALTEC TRAINING SERVICES

This is to certify that

ROY W. DOWLING

*has successfully completed the required 4 hours of refresher training
under Section 206 of TSCA, Title II, 15 U.S.C. 2646, for*

Asbestos Inspector

*as approved by the State of Louisiana and U.S.E.P.A. under 40 CFR 763 (AHERA)
on May 14, 2008, in Shreveport, Louisiana.*

Certificate Number: 08135CSR004572291

Accreditation expires: May 14, 2009

Examination date: N/A

Gray Chase

Gray Chase, Instructor

DEQ Certification No. A09T0013

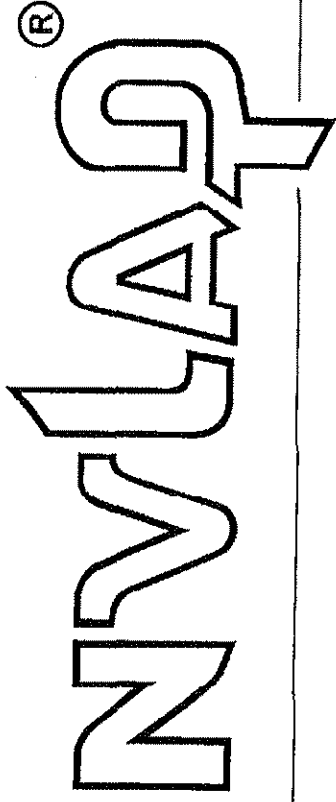
Roy W. Dowling

Roy W. Dowling, Training Manager

DEQ Certification No. A08T0286

ALTEC Environmental Consultants, Inc. ♦ P.O. Box 17867 ♦ Shreveport, Louisiana 71138-0867 ♦ (318) 687-3771

United States Department of Commerce
National Institute of Standards and Technology



Certificate of Accreditation to ISO/IEC 17025:2005

NVLAP LAB CODE: 200742-0

EMSL Analytical, Inc.
St. Louis, MO

is accredited by the National Voluntary Laboratory Accreditation Program for specific services,
listed on the Scope of Accreditation, for:

BULK ASBESTOS FIBER ANALYSIS

This laboratory is accredited in accordance with the recognized International Standard ISO/IEC 17025:2005.
This accreditation demonstrates technical competence for a defined scope and the operation of a laboratory quality
management system (refer to joint ISO-ILAC-IAF Communique dated 18 June 2005).

2008-04-01 through 2009-03-31

Effective dates



Jolly S. Bures
For the National Institute of Standards and Technology



**National Voluntary
Laboratory Accreditation Program**



SCOPE OF ACCREDITATION TO ISO/IEC 17025:2005

EMSL Analytical, Inc.
11040 Lin-Valle Drive
St. Louis, MO 63123
Dr. Jeff Siria, Ph.D
Phone: 314-845-8910 Fax: 314-845-6459
E-Mail: jsiria@emsl.com
URL: www.emsl.com

BULK ASBESTOS FIBER ANALYSIS (PLM)

NVLAP LAB CODE 200742-0

NVLAP Code Designation / Description

18/A01 EPA-600/M4-82-020: Interim Method for the Determination of Asbestos in Bulk Insulation
Samples

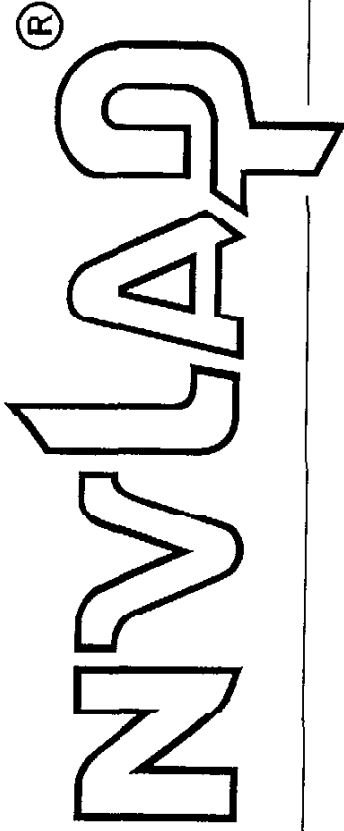
2008-04-01 through 2009-03-31

Effective dates

Sally S. Bruce

For the National Institute of Standards and Technology

United States Department of Commerce
National Institute of Standards and Technology



Certificate of Accreditation to ISO/IEC 17025:2005

NVLAP LAB CODE: 200742-0

EMSL Analytical, Inc.
St. Louis, MO

is accredited by the National Voluntary Laboratory Accreditation Program for specific services,
listed on the Scope of Accreditation for:

BULK ASBESTOS FIBER ANALYSIS

This laboratory is accredited in accordance with the recognized International Standard ISO/IEC 17025:2005.
This accreditation demonstrates technical competence for a defined scope and the operation of a laboratory quality
management system (refer to joint ISO-ILAC-IAF Communiqué dated 18 June 2005).

2008-04-01 through 2009-03-31

Effective dates



Dolly A. Bruce
For the National Institute of Standards and Technology



**National Voluntary
Laboratory Accreditation Program**



SCOPE OF ACCREDITATION TO ISO/IEC 17025:2005

EMSL Analytical, Inc.

11040 Lin-Valle Drive

St. Louis, MO 63123

Dr. Jeff Siria, Ph.D

Phone: 314-845-8910 Fax: 314-845-6459

E-Mail: jsiria@emsl.com

URL: www.emsl.com

BULK ASBESTOS FIBER ANALYSIS (PLM)

NVLAP LAB CODE 200742-0

NVLAP Code Designation / Description

18/A01	EPA-600/M4-82-020: Interim Method for the Determination of Asbestos in Bulk Insulation Samples
--------	--

2008-04-01 through 2009-03-31

Effective dates

For the National Institute of Standards and Technology