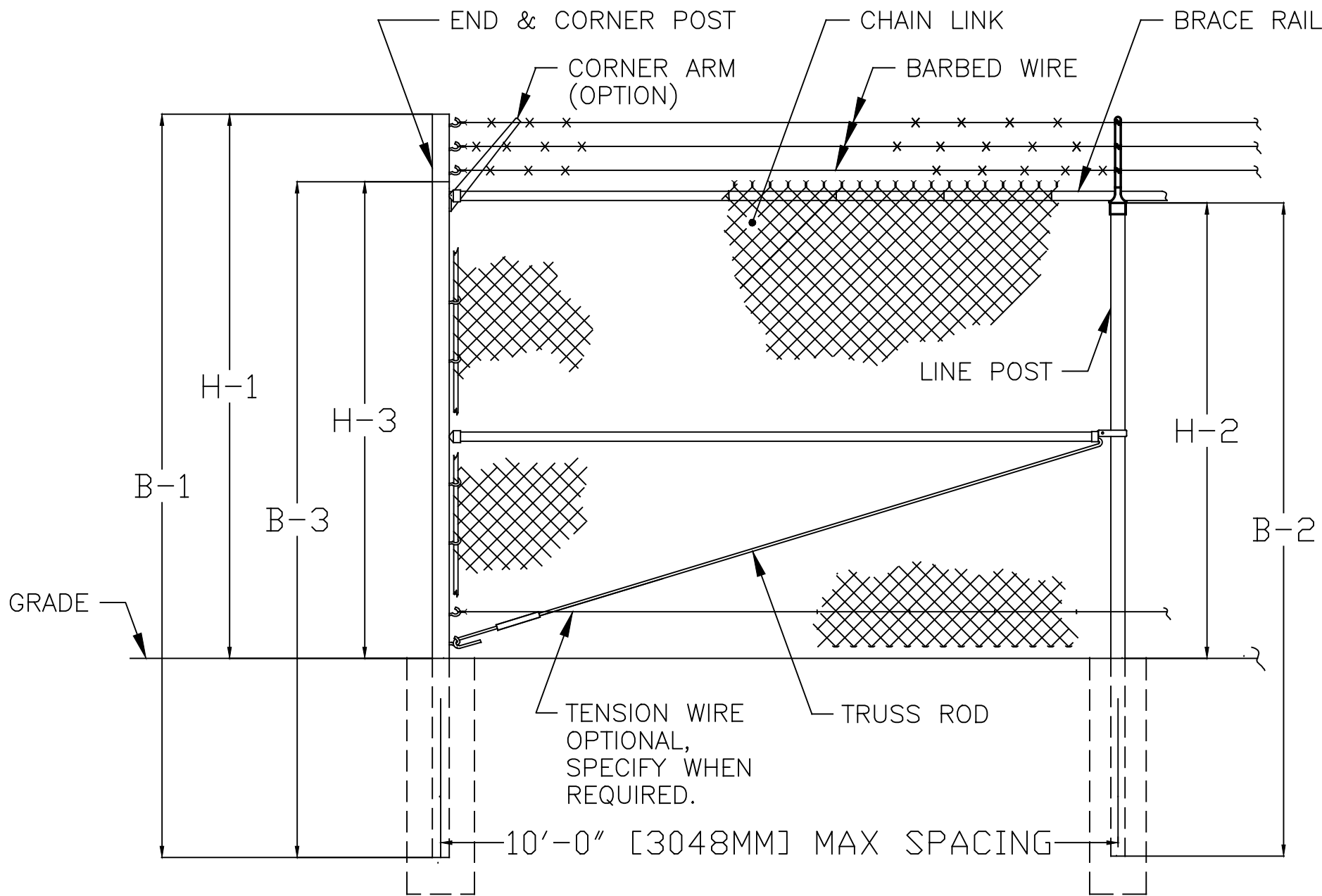
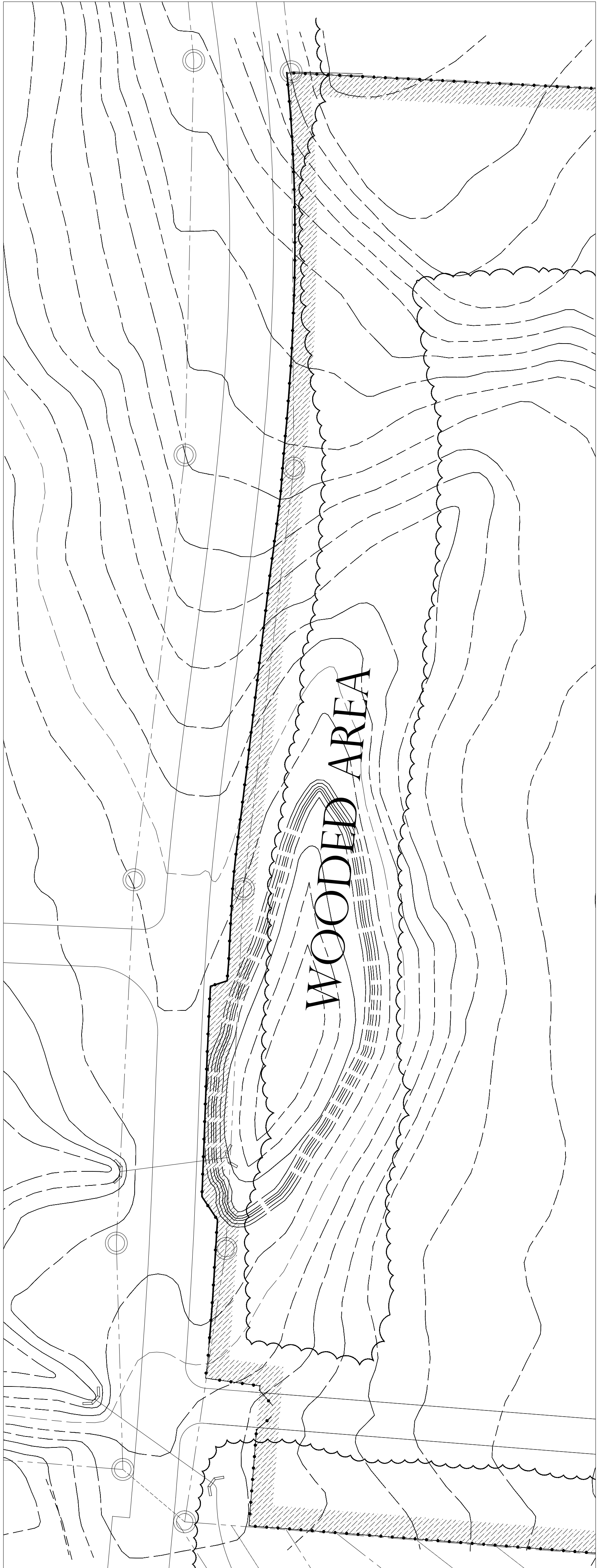


three inches = one foot
one and one half inches = one foot
one inch = one foot
three quarters inch = one foot
one half inch = one foot
three eighths inch = one foot
one quarter inch = one foot
one eighth inch = one foot



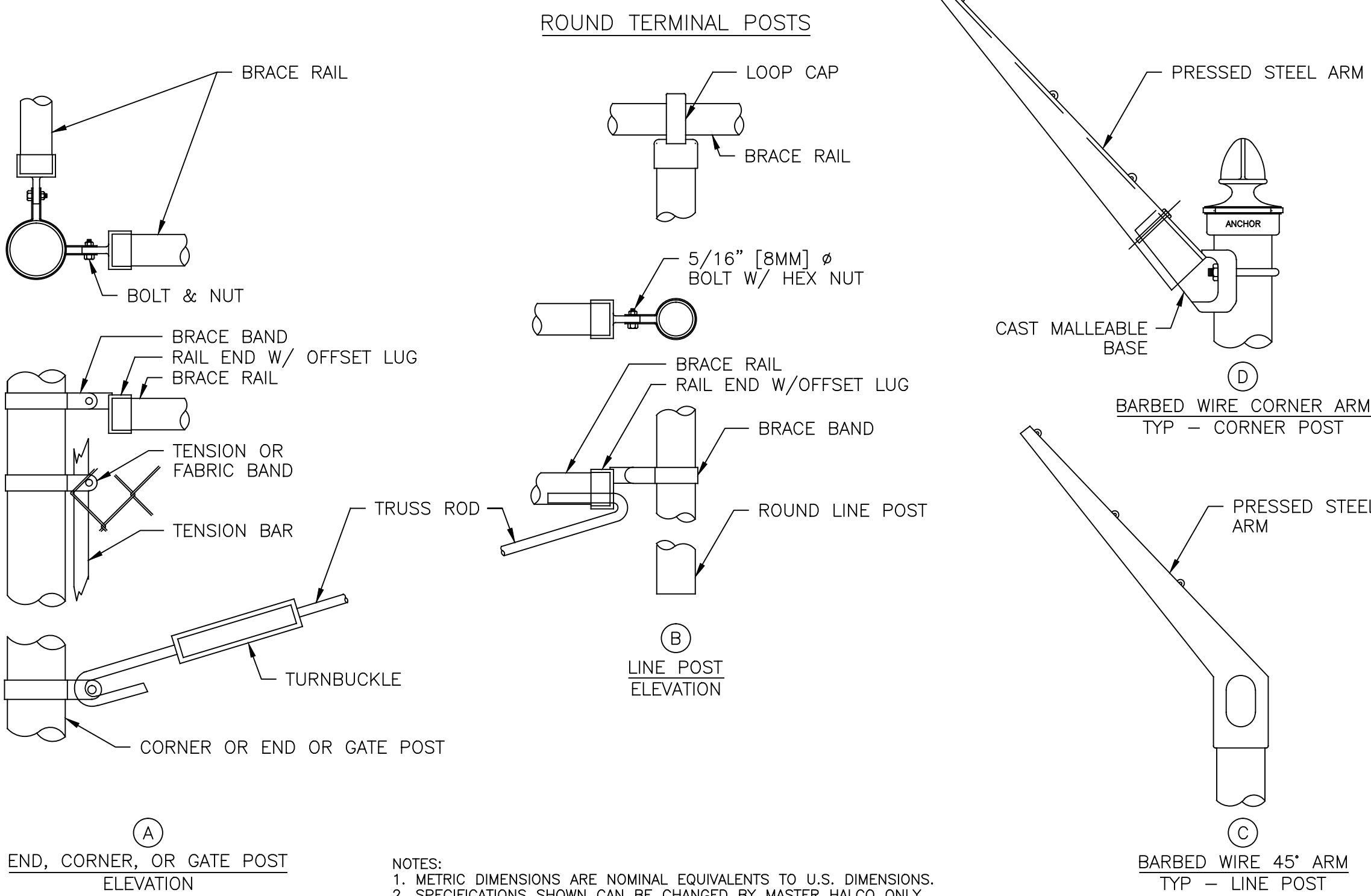
FENCE SECTION ELEVATION
WITH TOP RAIL & WITH BARBED WIRE

FENCE HEIGHT	UPRIGHT END & CORNER POSTS		LINE POSTS		CORNER POSTS WITH CORNER ARM	
NOM HT INCLUDING BARBED WIRE	B-1 BAR LENGTH	H-1 HEIGHT ABOVE GRADE	B-2 BAR LENGTH	H-2 HEIGHT ABOVE GRADE	B-3 BAR LENGTH	H-3 HEIGHT ABOVE GRADE
7'-0" [2134MM]	10'-0" [3048MM]	7'-0 5/8" [2150MM]	8'-8" [2642MM]	5'-8 7/8" [1749MM]	9'-0" [2743MM]	6'-0 5/8" [1845MM]

- NOTES:
1. THIS DWG CORRESPONDS WITH DWGS 1-1120 & 1-1140.
2. SPECIFICATIONS SHOWN CAN BE CHANGED BY MASTER HALCO ONLY.

SYMBOLS LEGEND:

- PROPERTY LINE
- CHAIN LINK FENCING
- GUARDRAIL
- UNDERGROUND STRUCTURES
- BROOK
- NEW PERIMETER FENCE.
- AREA OF 10'-0" PATH TO BE CLEARED AS REQUIRED IN CONTRACT



- NOTES:
1. METRIC DIMENSIONS ARE NOMINAL EQUIVALENTS TO U.S. DIMENSIONS.
2. SPECIFICATIONS SHOWN CAN BE CHANGED BY MASTER HALCO ONLY.
3. ALL MATERIAL TO CONFORM TO FEDERAL SPEC. RR-F-181G (1-25-74).
4. ALL GALVANIZED FITTINGS TO CONFORM TO ASTM-A153.
5. THIS DWG CORRESPONDS WITH DWGS 1-1110, 1-1120, 1-1130 & 1-1140.

CONSULTANTS:		ARCHITECT/ENGINEERS:		NORTH:		Drawing Title		Project Title		Project Number		Office of Facilities Management
Indus Systems, Inc. 2352, Main Street, Concord MA 01742 Tel: 978-461-0555 www.indus-systems.com						PHASE 1 AND DETAILS Scale: 1" = 30'-0"		FENCING AND GRUBBING AT CASTLE POINT		620A4-11-215		
Parking and Road Alterations 03-04-2010						Approved: Director, VA/HHCS		Location		Building(s) Number		
Building Locations 03-02-2010						Approved: Chief of Engineering		CASTLE POINT, NEW YORK		SITE		
Site Boundaries 02-15-2007								Date		Drawing Number		
Title Block and Color Table Modifications 03-31-2008								04-06-2010		L-101		
As-Built (Indus System) 06-30-2005								Checked		Drawn		
Revisions								AMI		SHEET 01 OF		