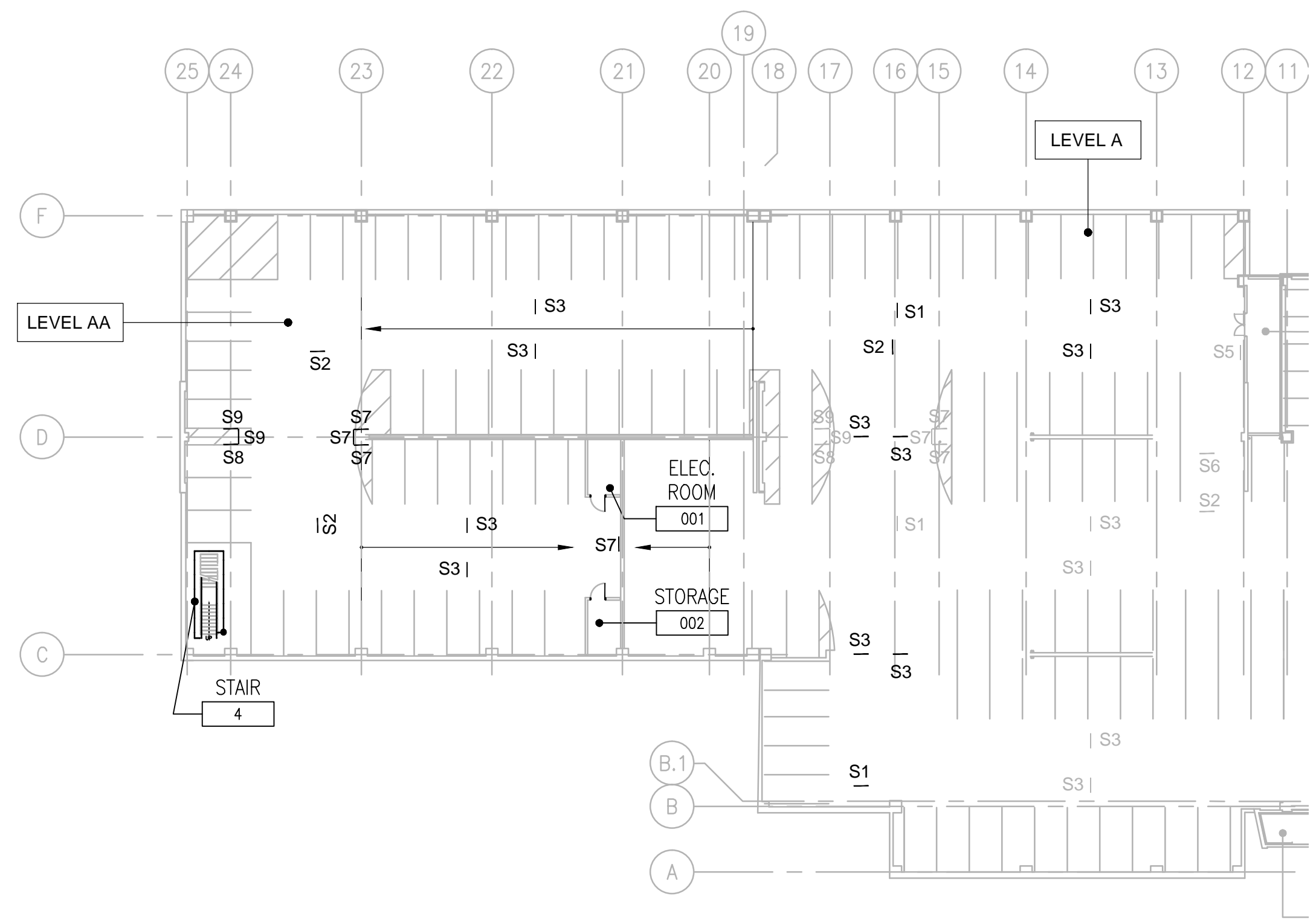
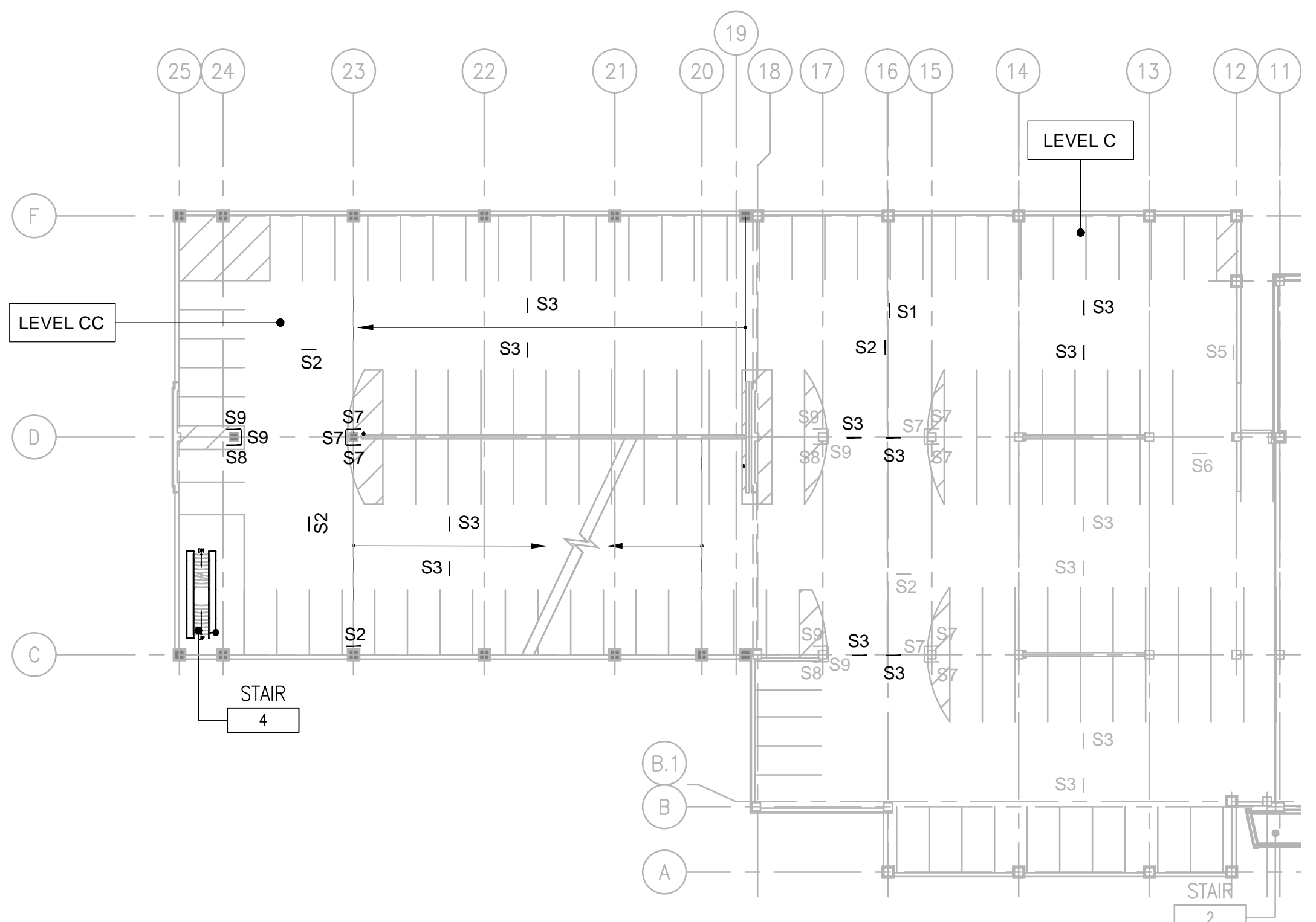


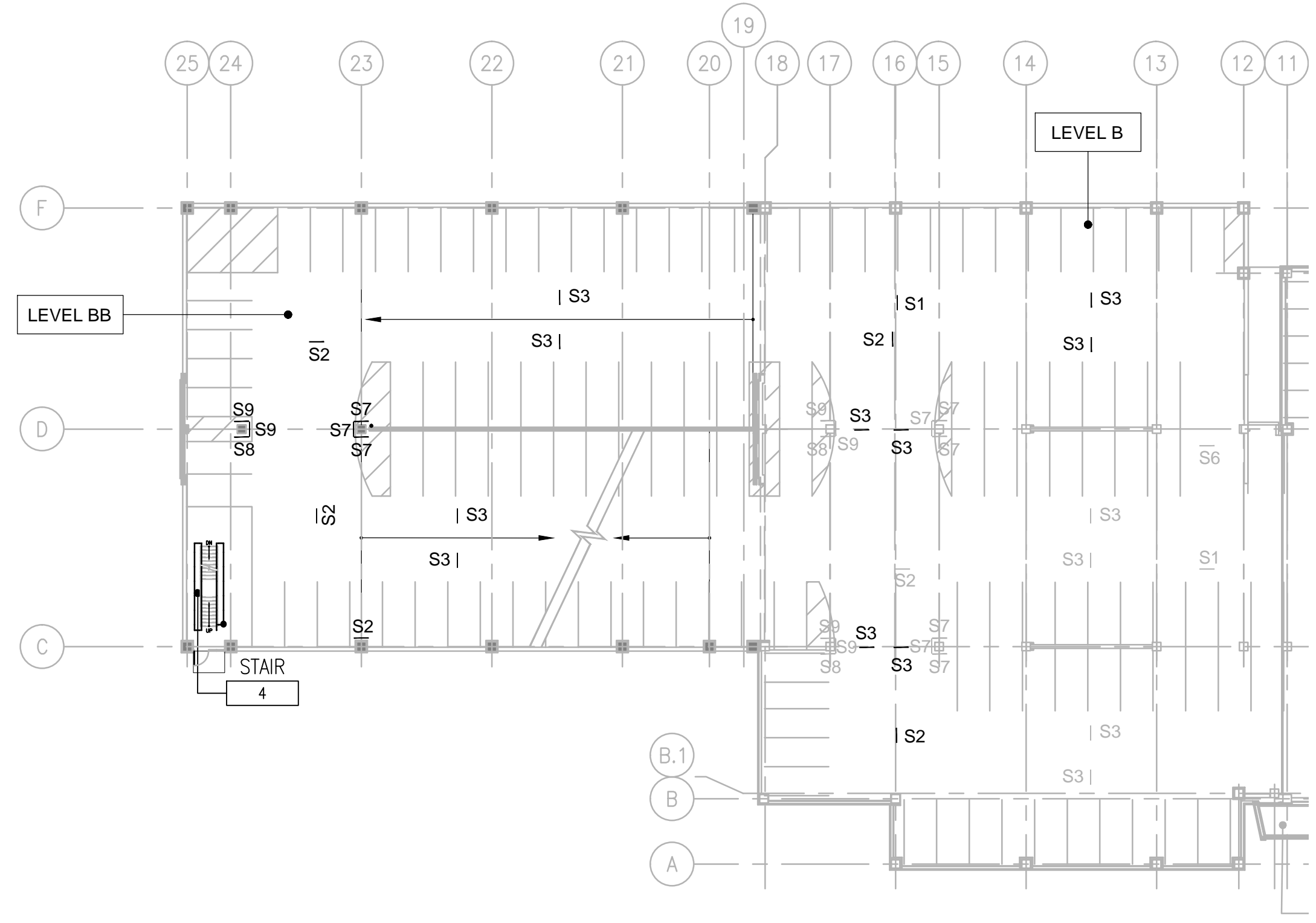
OVERALL BUILDING ISOMETRIC



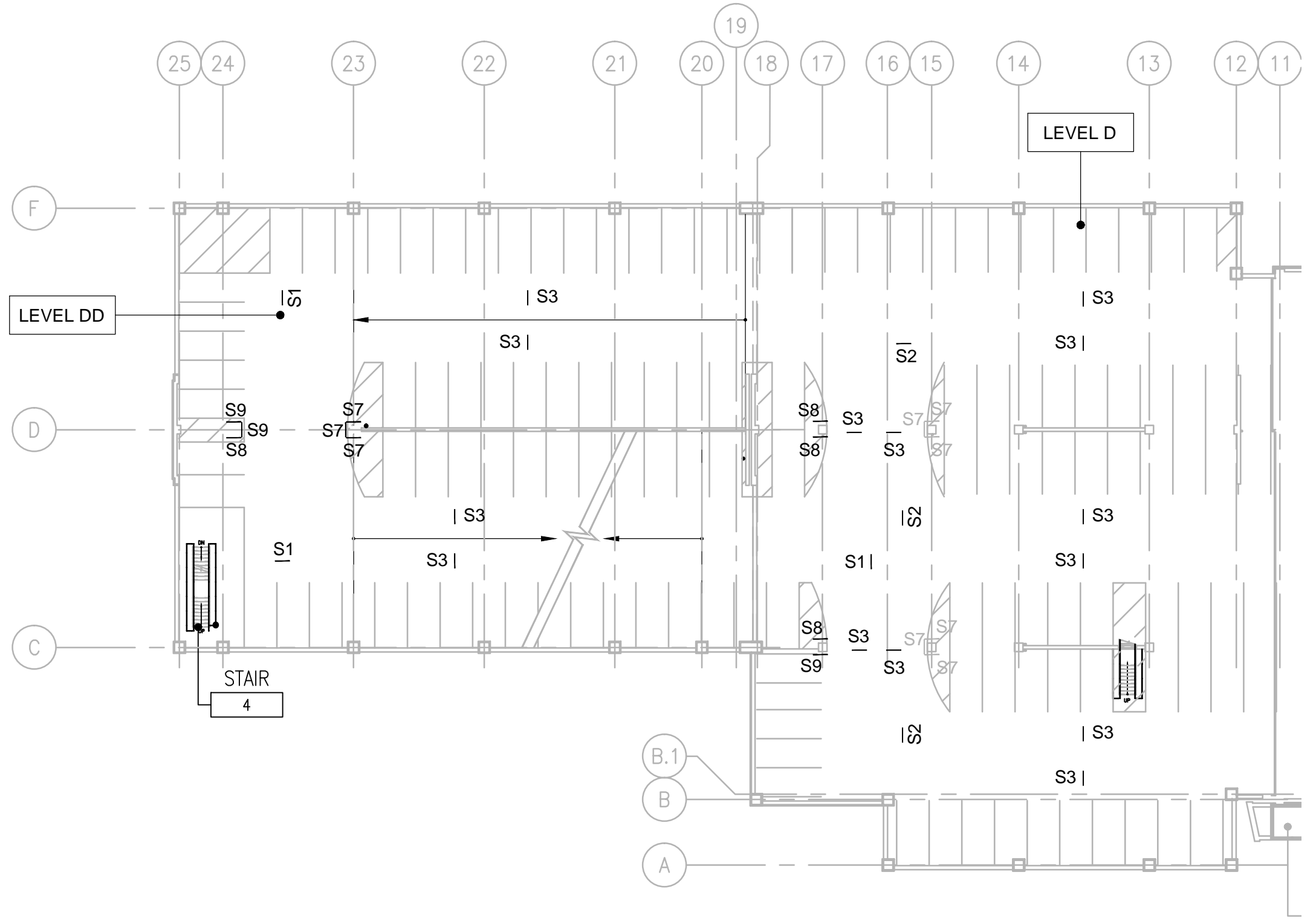
1 LEVEL AA | A - SIGNAGE PLAN
1/32"=1'-0"
PLAN NORTH



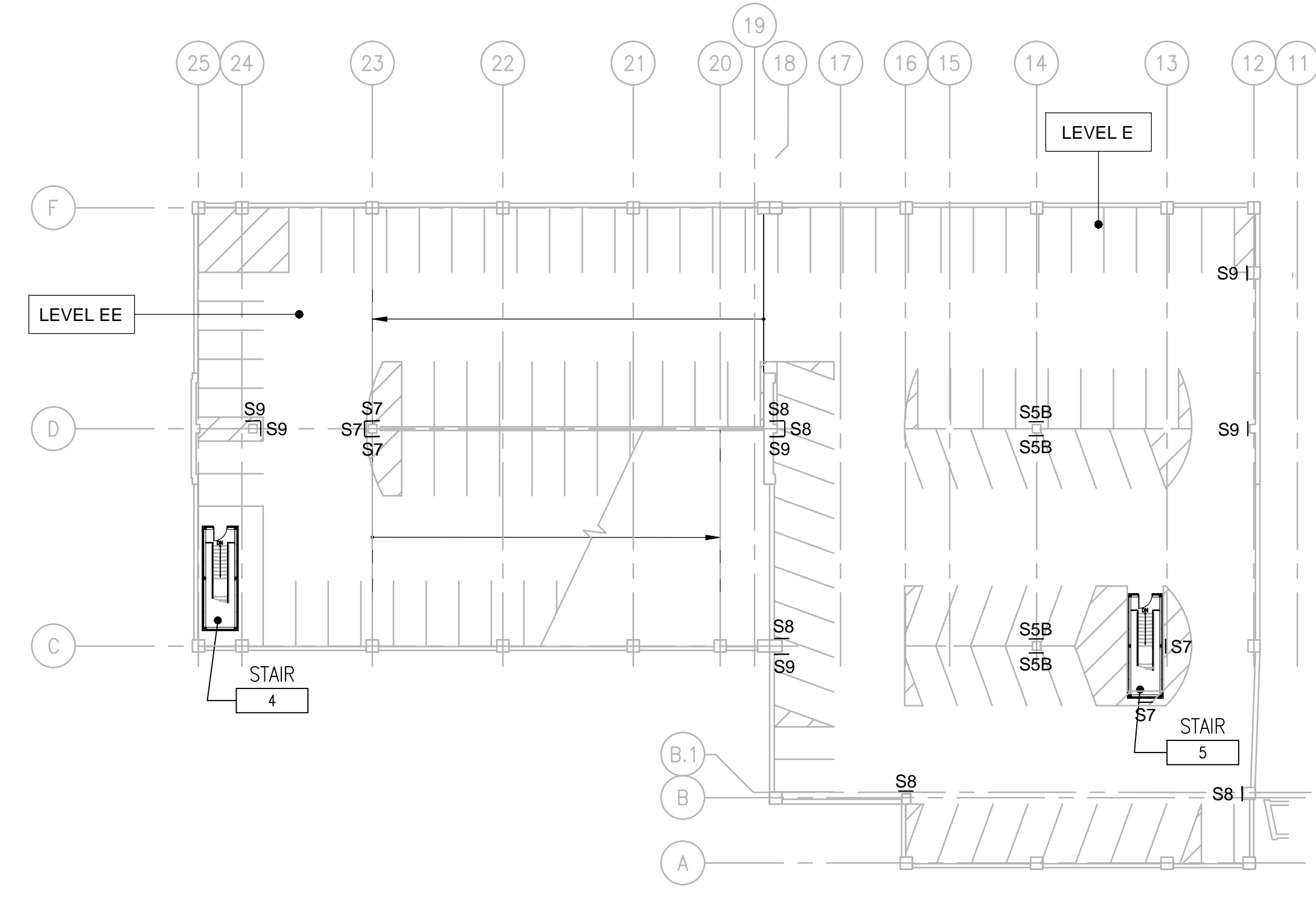
3 LEVEL CC | C - SIGNAGE PLAN
1/32"=1'-0"
PLAN NORTH



2 LEVEL BB | B - SIGNAGE PLAN
1/32"=1'-0"
PLAN NORTH



4 LEVEL DD | D - SIGNAGE PLAN
1/32"=1'-0"
PLAN NORTH



5 LEVEL EE | E - SIGNAGE PLAN
1/32"=1'-0"
PLAN NORTH

SIGN SCHEDULE	
MARK	TEXT / MESSAGE
S1	← EXIT
S2	EXIT →
S3	TWO-WAY TRAFFIC
S4	ONE WAY →
S5 / S5a	ONE WAY →
S6	DO NOT ENTER
S7	NO PARKING
S8	LEVEL DESIGNATION
S9	LEVEL DESIGNATION

S	PROVIDE SIGNAGE
S	EXISTING SIGNAGE

- SIGNAGE GENERAL NOTES**
- REFER TO SPECIFICATIONS DIVISION 01 GENERAL REQUIREMENTS.
 - REFER TO DRAWING G-004 FOR PROJECT CONSTRUCTION PHASING NOTES.
 - REFER TO DRAWINGS APD-101 AND APD-102 FOR EXISTING SIGNAGE LOCATIONS.
 - REFER TO DRAWING AP-101 FOR SIGN DETAILS.

three inches = one foot
 one and one half inches = one foot
 one inch = one foot
 three quarters inch = one foot
 one half inch = one foot
 three eighths inch = one foot
 one quarter inch = one foot
 one eighth inch = one foot
 one sixteenth inch = one foot

CONSULTANTS: WALKER PARKING CONSULTANTS 225 Ann Arbor, Suite 11 Ann Arbor, MI 48108	MIDWESTERN CONSULTING 3815 Plaza Drive Ann Arbor, Michigan 48108 (734) 995-0200 • www.midwesternconsulting.com Land Development • Land Survey • Institutional • Municipal Wireless Communications • Transportation • Landfill Services	KEYPLAN	ARCHITECT + ENGINEERS: BANCROFT ARCHITECTS + ENGINEERS 700 Nicholas Blvd., Suite 300 Ek Grove Village, IL 60007 Telephone : 847.952.9342 www.bancroft-ae.com Bancroft+AE Project No. 14-121 VA CONTRACT NO. VA250-17-C-0008	Drawing Title SIGNAGE PLANS	Project Title CONSTRUCT NORTH PARKING STRUCTURE	Project Number 506-331	Office of Construction and Facilities Management
				Approved Project Director	Location ANN ARBOR, MICHIGAN	Building Number 29	
Revisions: 1 RFI 005 SIGNAGE Date: 02-06-2018	Date 02-06-2018	Date 02-06-2018	Checked EM	Drawn AG	Date 02-06-2018	Checked EM	Drawn AG