

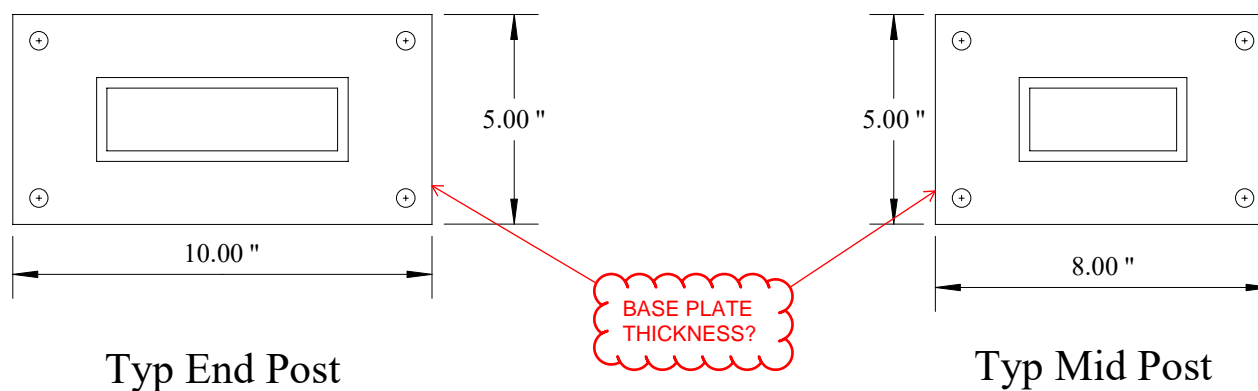
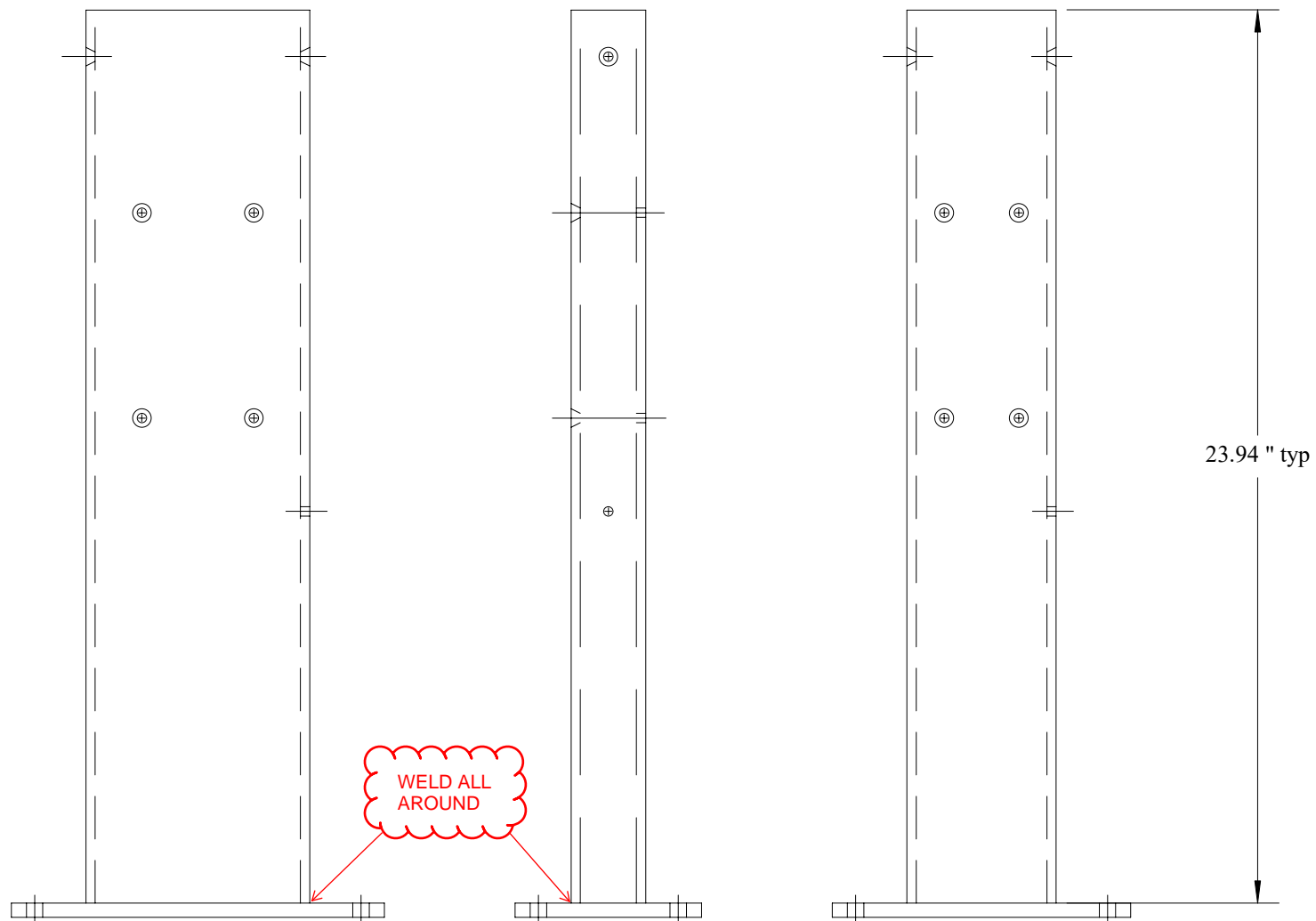
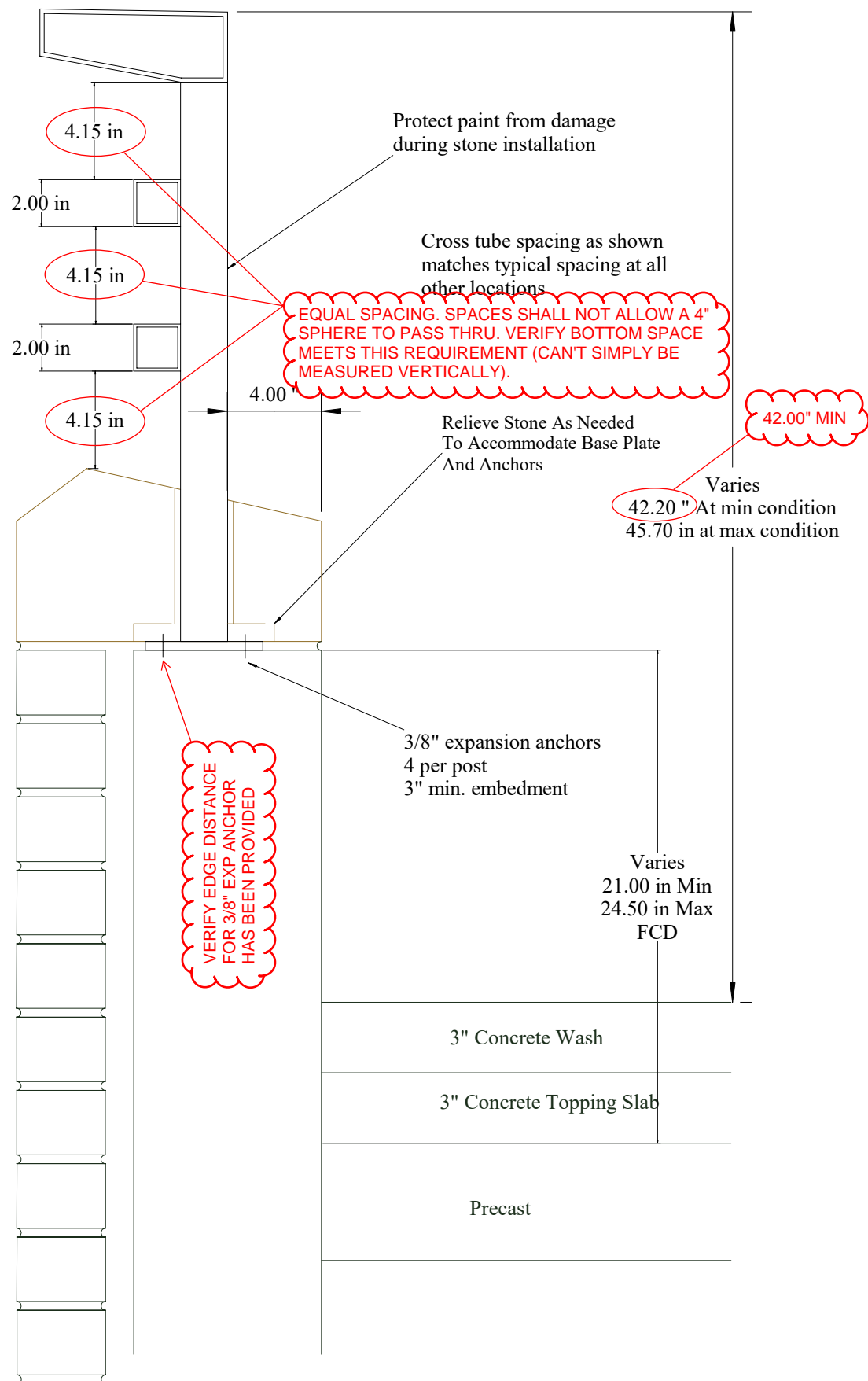
Ann Arbor VA
Parking Deck Expansion

Proposed handrail at
stone cap

Level B Along A Line
26 posts total

POST SPACING TO MATCH
LEVELS ABOVE

DESIGN TO MEET LOADING
REQUIREMENTS - SEE SPECS



Walker

Project Submittal Number: _____

- No Exception Taken
- Rejected
- Submittal Not Required No Review Performed
- Make Corrections Noted Resubmittal not Required
- Revise and Resubmit

Drawings have been reviewed for design intent and general compliance with the information given in the contract documents. Deviations from contract documents shall be clearly identified and are not reviewed nor accepted unless identified. Contractor is responsible for dimensions, quantities, fabrication, processes, and techniques of construction, coordination of its work with that of all other trades and satisfactory performance of its work.

Date: 02/03/2017 By: KJW

I.F. Metalworks
16680 Industrial St
Roseville, MI 48066
586-776-8311