

LEGEND

— IN PANEL WIRING
 - - - FIELD WIRING

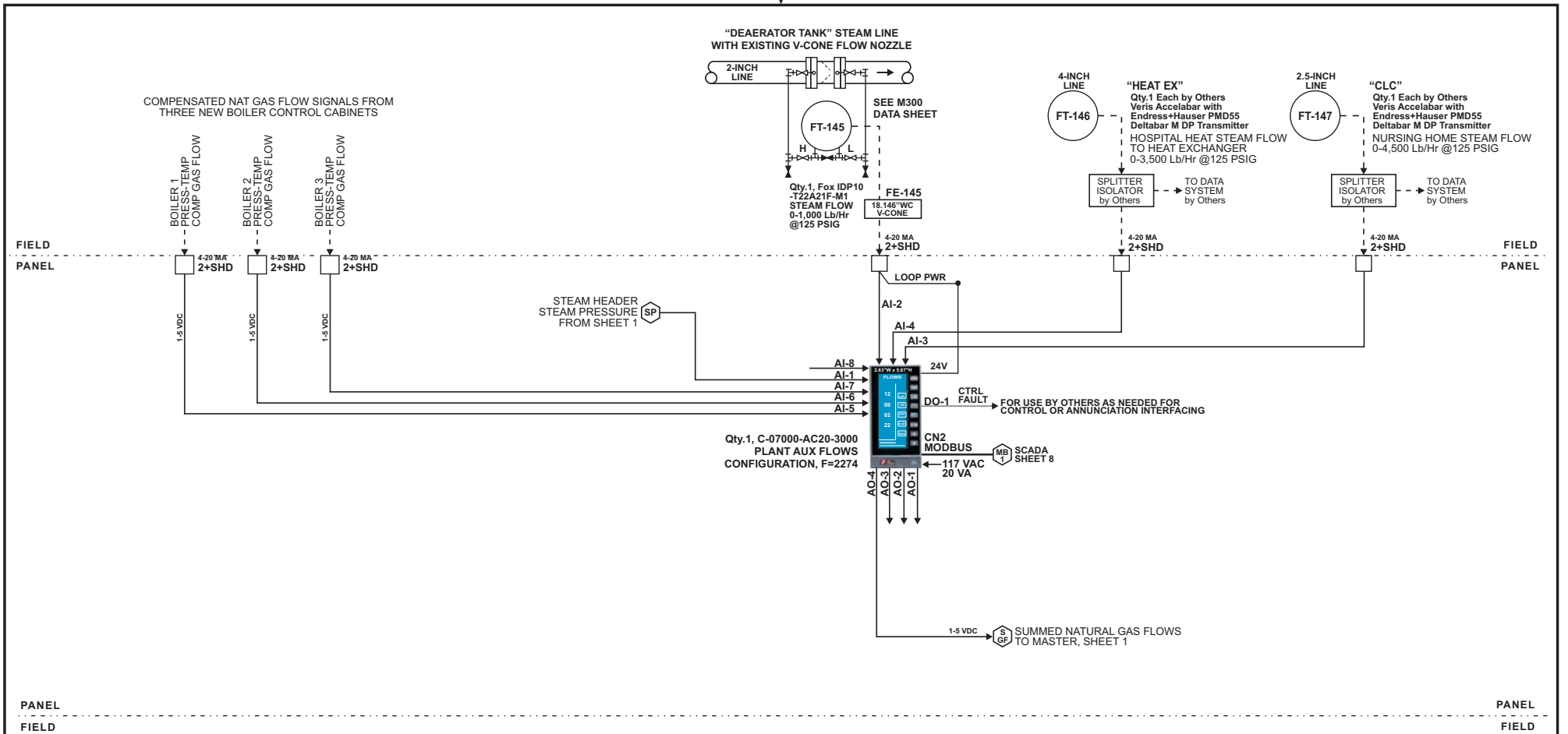
□ PANEL I/O BLOCKS
 ○ INTERCONNECTS, ANALOG OR SIGNAL BUS
 ◇ INTERCONNECTS, DIGITAL

| | | |
|-----|---|--------------|
| C | - | |
| B | JOB 363. DELETING ALL AC-20 BOILER CONTROLLERS. NEW BOILER CABINET LOCATED UPAC™ SYSTEMS. | JSS 09-30-11 |
| A | CONTROL STRATEGY & I/O | JSS 12-05-06 |
| LTR | REVISIONS | BY DATE |

HAYS CLEVELAND JOB No 152-IS
 Qty.1, ALL ITEMS THIS SHEET, UNLESS OTHERWISE NOTED

| | | | | |
|---|---------------|--|--------|--|
| All revisions to hardware, wiring, and software must be approved in writing by Hays Cleveland Division of UniControl Inc. | DR. JSS | Hays Cleveland Division of UniControl Inc. Combustion Sales & Engineering - BOYNTON BEACH, FLORIDA 33426 | | |
| | DATE 09-20-06 | | | |
| | CHK | STEAM PRESSURE MASTER SYSTEM CONFIGURATION SCHEMATIC WEST PALM BEACH, FLORIDA 33410 | | |
| | R&D | | | |
| MFG | SCALE none | DWG. NO. B67756 | REV. B | |
| | SHEET 1 OF 8 | | | |





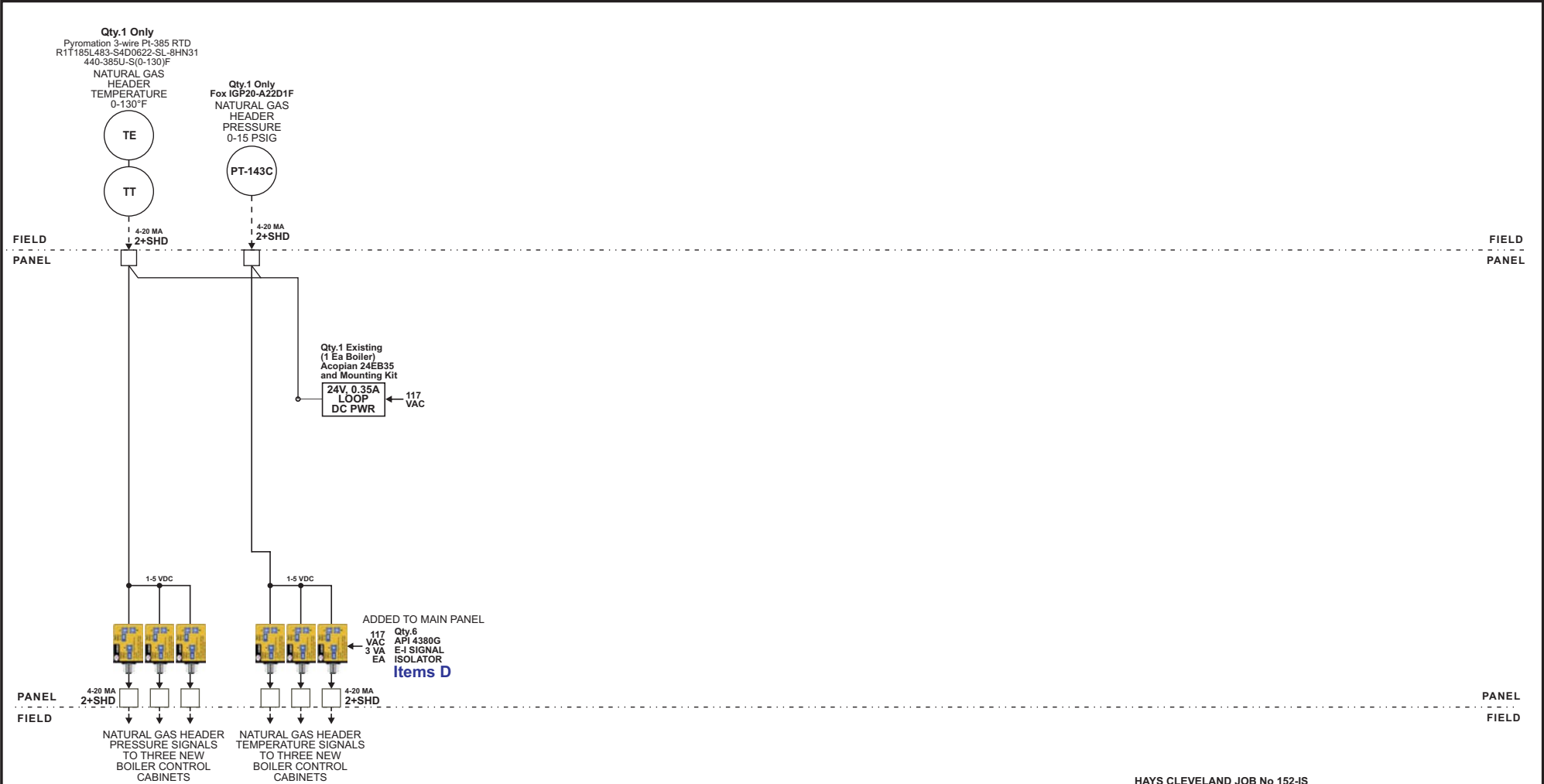
- LEGEND**
- IN PANEL WIRING
 - - - - FIELD WIRING
 - PANEL I/O BLOCKS
 - INTERCONNECTS, ANALOG OR SIGNAL BUS
 - ◇ INTERCONNECTS, DIGITAL

| | | | | | | |
|-----|---|-----|-----|--|-----|----------|
| F | - | | C | CHANGED NURSING HOME STEAM FLOW DP RANGE AND TRANSMITTED RANGE. WAS 111.39"wc, 5,000 PPH | JSS | 03-20-07 |
| E | JOB 363 AS INSTALLED. UPDATE STEAM FLOW RANGES AND METERS INSTALLED BY OTHERS. | JSS | B | CONTROL STRATEGY & I/O | JSS | 12-05-06 |
| D | JOB 363. DELETING ALL AC-20 BOILER CONTROLLERS. NEW BOILER CABINET LOCATED UPAC™ SYSTEMS. | JSS | A | FE-145 FS CHANGED FROM 2,000 TO 1,000 LB/HR | JSS | 10-05-06 |
| LTR | REVISIONS | BY | LTR | REVISIONS | BY | DATE |

HAYS CLEVELAND JOB No 152-IS
Qty.1, ALL ITEMS THIS SHEET, UNLESS OTHERWISE NOTED

| | | | | |
|---|--------------|---|--------|--------|
| All revisions to hardware, wiring, and software must be approved in writing by Hays Cleveland Division of UniControl Inc. | DR. | Hays Cleveland Division of UniControl Inc. | | |
| | DATE | Combustion Sales & Engineering - BOYNTON BEACH, FLORIDA 33426 | | |
| | CHK | PLANT AUXILIARY FLOWS SYSTEM CONFIGURATION SCHEMATIC WEST PALM BEACH, FLORIDA 33410 | | |
| | R&D | | | |
| MFG | SCALE none | DWG. NO. | B67756 | REV. E |
| | SHEET 2 OF 8 | | | |





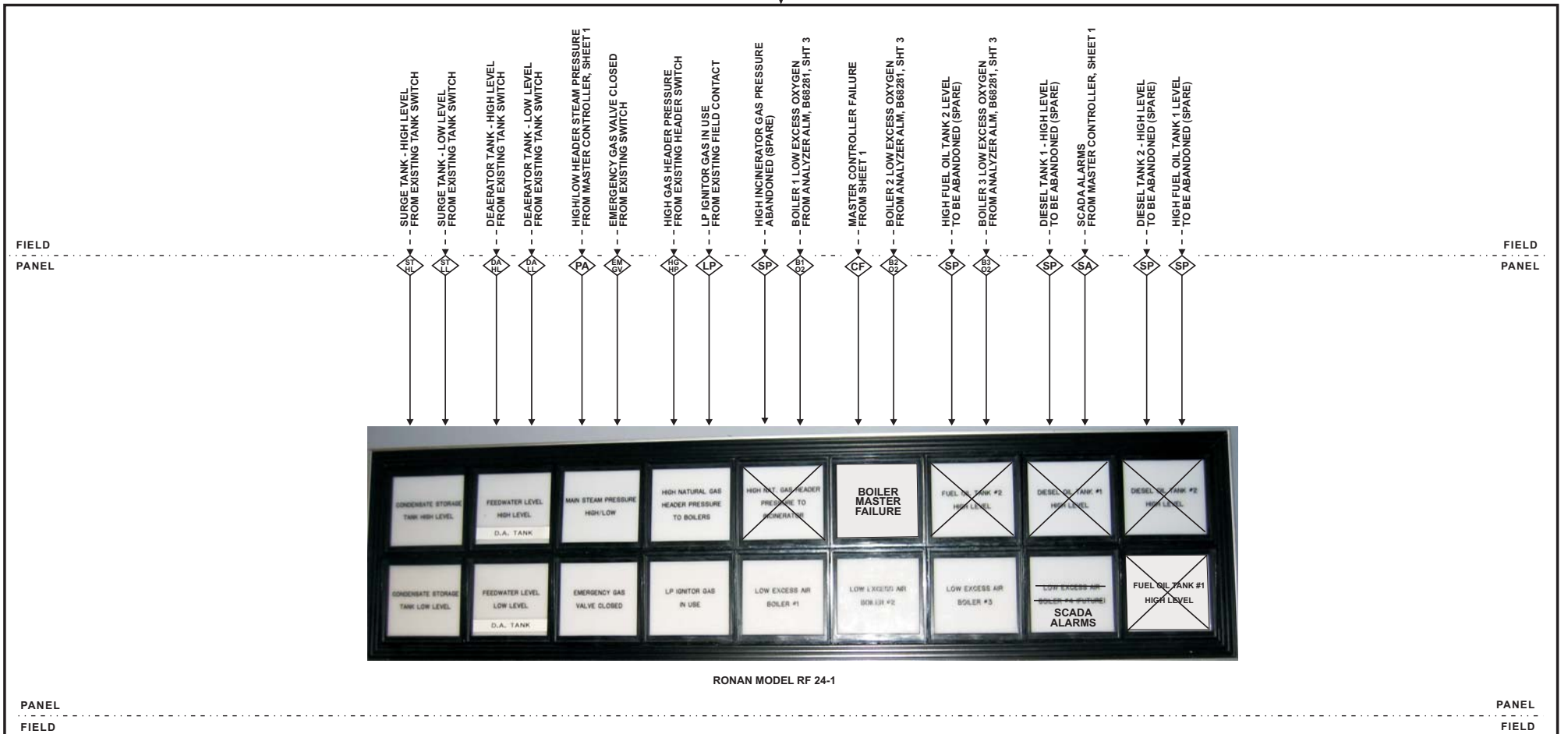
HAYS CLEVELAND JOB No 152-IS
Qty.3, ALL ITEMS THIS SHEET, UNLESS OTHERWISE NOTED

| | | |
|-----|--|-----------------|
| F | - | |
| E | | |
| D | JOB 363 AS INSTALLED. UPDATE STEAM FLOW RANGES AND METERS INSTALLED BY OTHERS. | JSS 06-21-12 |
| LTR | REVISIONS | BY DATE |

| | | |
|-----|---|-----------------|
| C | JOB 363. DELETING ALL AC-20 BOILER CONTROLLERS. NEW BOILER CABINET LOCATED UPAC™ SYSTEMS. | JSS 09-30-11 |
| B | ADD "COMMON" NAMES FOR FE-142 & FE-143. CORRECT MED STM FLOW FT-143 FROM 1,000 TO 10,000 LB/HR. | JSS 03-23-07 |
| A | CONTROL STRATEGIES & I/O | JSS 12-05-06 |
| LTR | REVISIONS | BY DATE |

| | | | | | | |
|---|-------|---|----------|--------|------|---|
| All revisions to hardware, wiring, and software must be approved in writing by Hays Cleveland Division of UniControl Inc. | DR. | Hays Cleveland Division of UniControl Inc. | | | | |
| | DATE | 09-20-06 | | | | |
| | CHK | Combustion Sales & Engineering - BOYNTON BEACH, FLORIDA 33426 | | | | |
| | R&D | BOILER 1, 2 & 3 FLOWS SYSTEM CONFIGURATION SCHEMATIC WEST PALM BEACH, FLORIDA 33410 | | | | |
| MFG | SCALE | none | DWG. NO. | B67756 | REV. | D |
| | SHEET | 4 OF 8 | | | | |





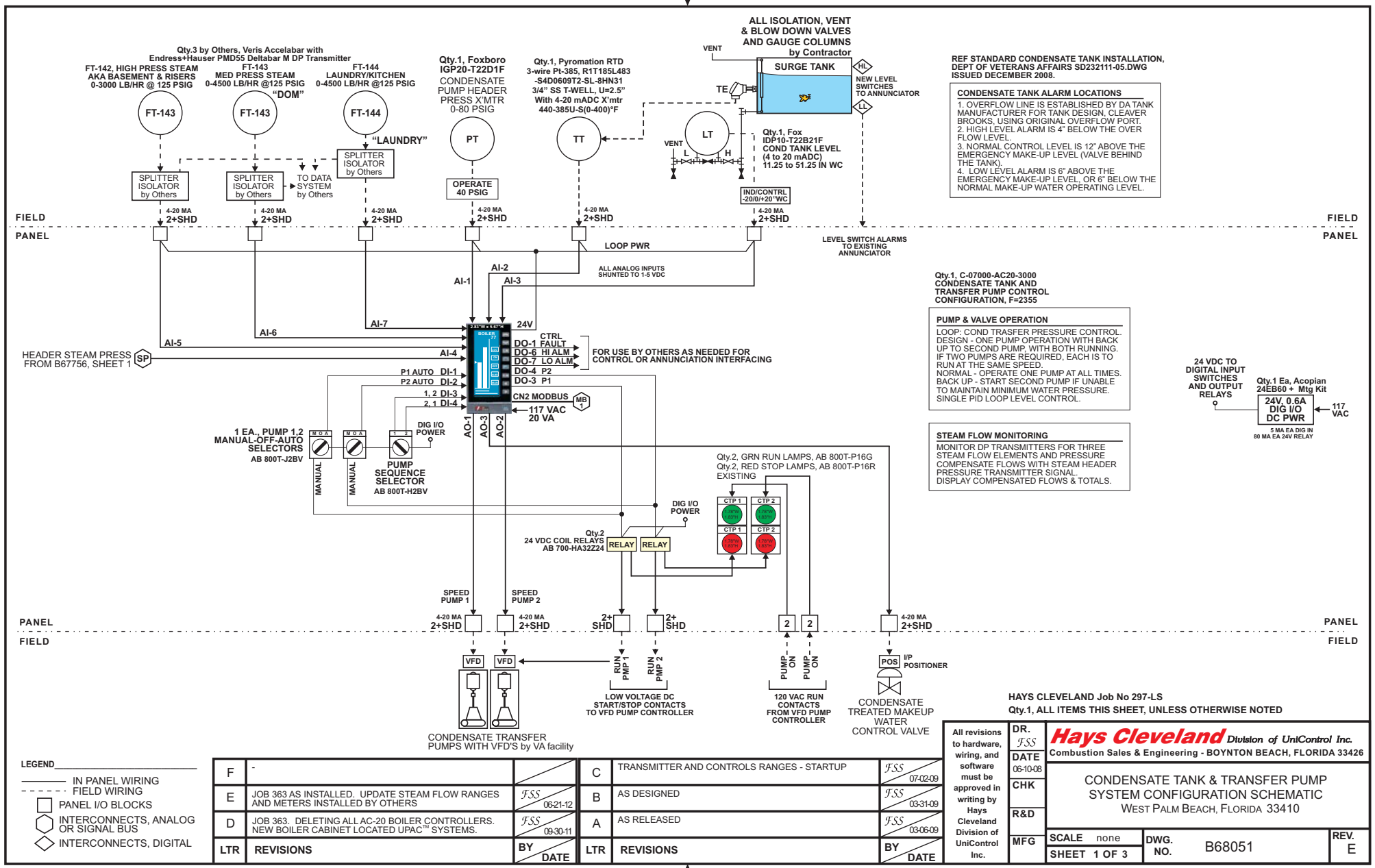
RONAN MODEL RF 24-1

- LEGEND**
- IN PANEL WIRING
 - - - - FIELD WIRING
 - PANEL I/O BLOCKS
 - INTERCONNECTS, ANALOG OR SIGNAL BUS
 - ◇ INTERCONNECTS, DIGITAL

| | | | |
|-----|---|-----|----------|
| C | JOB 363. DELETING ALL AC-20 BOILER CONTROLLERS. NEW BOILER CABINET LOCATED UPAC™ SYSTEMS. | JSS | 09-30-11 |
| B | SWAPPED FUEL OIL TANK 1 HI LEVEL WITH BOILER MASTER FAIL WINDOW (WHICH HAD NO ALARM) | JSS | 03-20-07 |
| A | UNUSED BOILER 4 LOW O2 ALARM WINDOW TO BE USED FOR SCADA ALARMS. AS RELEASED. | JSS | 10-05-06 |
| LTR | REVISIONS | BY | DATE |

RE-WIRE NEW SIGNALS TO EXISTING ANNUNCIATOR POINTS
 HAYS CLEVELAND JOB No 152-IS
 Qty.1, ALL ITEMS THIS SHEET, UNLESS OTHERWISE NOTED

| | | | | |
|---|---|---|--------|--------|
| All revisions to hardware, wiring, and software must be approved in writing by Hays Cleveland Division of UniControl Inc. | DR. | Hays Cleveland Division of UniControl Inc. | | |
| | DATE | Combustion Sales & Engineering - BOYNTON BEACH, FLORIDA 33426 | | |
| CHK | EXISTING PANEL ANNUNCIATOR SYSTEM CONFIGURATION SCHEMATIC WEST PALM BEACH, FLORIDA 33410 | | | |
| R&D | | | | |
| MFG | SCALE none | DWG. NO. | B67756 | REV. C |
| | SHEET 7 OF 8 | | | |



REF STANDARD CONDENSATE TANK INSTALLATION, DEPT OF VETERANS AFFAIRS SD232111-05.DWG ISSUED DECEMBER 2008.

CONDENSATE TANK ALARM LOCATIONS

1. OVERFLOW LINE IS ESTABLISHED BY DA TANK MANUFACTURER FOR TANK DESIGN. CLEAVER BROOKS, USING ORIGINAL OVERFLOW PORT.
2. HIGH LEVEL ALARM IS 4" ABOVE THE OVER FLOW LEVEL.
3. NORMAL CONTROL LEVEL IS 12" ABOVE THE EMERGENCY MAKE-UP LEVEL (VALVE BEHIND THE TANK).
4. LOW LEVEL ALARM IS 6" ABOVE THE EMERGENCY MAKE-UP LEVEL, OR 6" BELOW THE NORMAL MAKE-UP WATER OPERATING LEVEL.

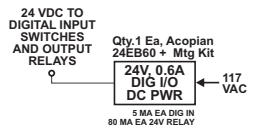
Qty.1, C-07000-AC20-3000
CONDENSATE TANK AND TRANSFER PUMP CONTROL CONFIGURATION, F=2355

PUMP & VALVE OPERATION

LOOP: COND TRANSFER PRESSURE CONTROL. DESIGN - ONE PUMP OPERATION WITH BACK UP TO SECOND PUMP WITH BOTH RUNNING. IF TWO PUMPS ARE REQUIRED, EACH IS TO RUN AT THE SAME SPEED. NORMAL - OPERATE ONE PUMP AT ALL TIMES. BACK UP - START SECOND PUMP IF UNABLE TO MAINTAIN MINIMUM WATER PRESSURE. SINGLE PID LOOP LEVEL CONTROL.

STEAM FLOW MONITORING

MONITOR DP TRANSMITTERS FOR THREE STEAM FLOW ELEMENTS AND PRESSURE COMPENSATE FLOWS WITH STEAM HEADER PRESSURE TRANSMITTER SIGNAL. DISPLAY COMPENSATED FLOWS & TOTALS.



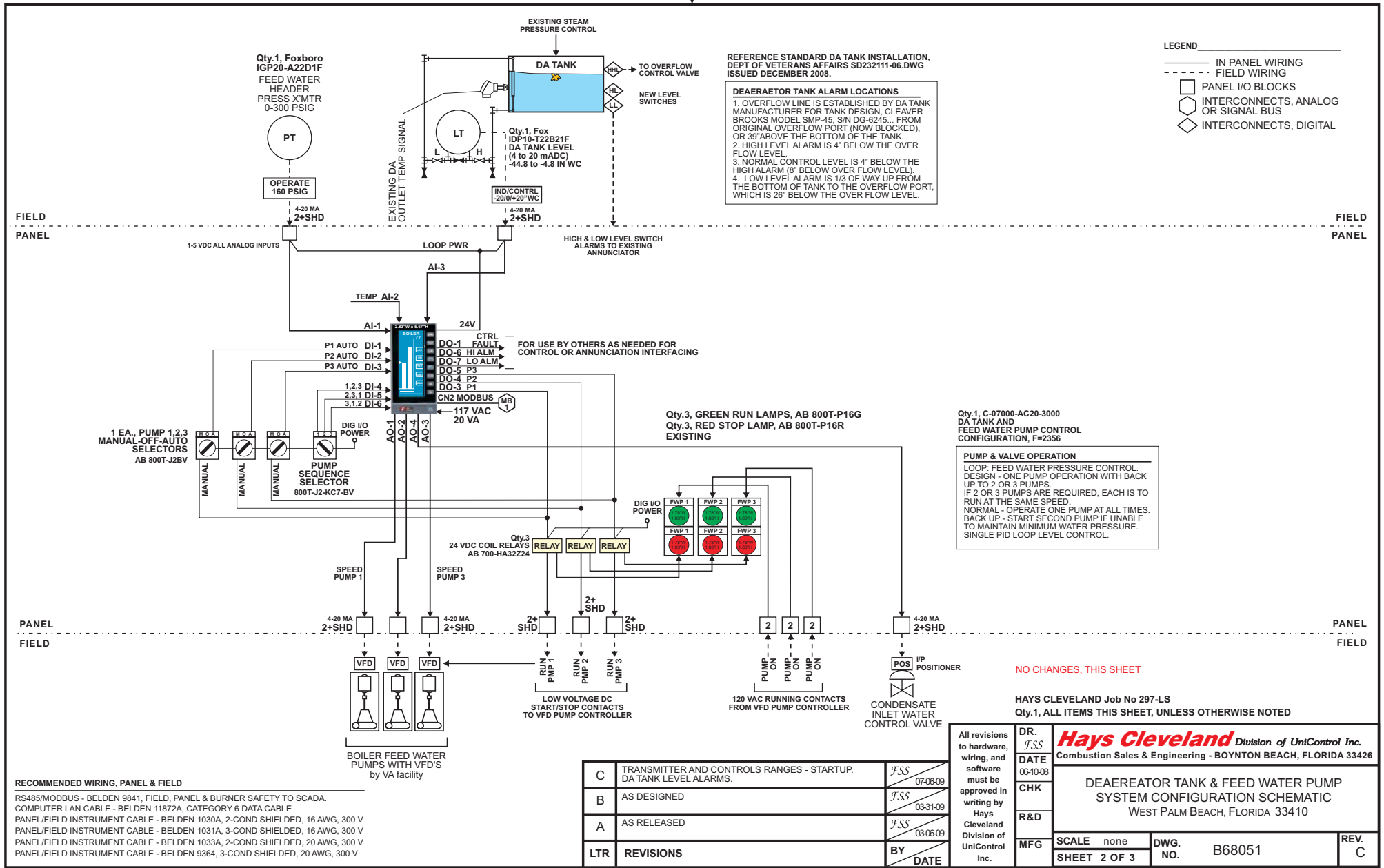
HAYS CLEVELAND Job No 297-LS
Qty.1, ALL ITEMS THIS SHEET, UNLESS OTHERWISE NOTED

LEGEND

- IN PANEL WIRING
- - - FIELD WIRING
- PANEL I/O BLOCKS
- INTERCONNECTS, ANALOG OR SIGNAL BUS
- ◇ INTERCONNECTS, DIGITAL

| | | | | | |
|-----|---|----|---|-----|----------|
| F | - | C | TRANSMITTER AND CONTROLS RANGES - STARTUP | JSS | 07-02-09 |
| E | JOB 363 AS INSTALLED. UPDATE STEAM FLOW RANGES AND METERS INSTALLED BY OTHERS | B | AS DESIGNED | JSS | 03-31-09 |
| D | JOB 363. DELETING ALL AC-20 BOILER CONTROLLERS. NEW BOILER CABINET LOCATED UPAC™ SYSTEMS. | A | AS RELEASED | JSS | 03-06-09 |
| LTR | REVISIONS | BY | DATE | BY | DATE |

| | | | |
|---|----------|----------|--|
| All revisions to hardware, wiring, and software must be approved in writing by Hays Cleveland Division of UniControl Inc. | DR. | JSS | Hays Cleveland Division of UniControl Inc. Combustion Sales & Engineering - BOYNTON BEACH, FLORIDA 33426 |
| | DATE | 06-10-08 | |
| CONDENSATE TANK & TRANSFER PUMP SYSTEM CONFIGURATION SCHEMATIC WEST PALM BEACH, FLORIDA 33410 | CHK | | |
| | R&D | | |
| SCALE none SHEET 1 OF 3 | DWG. NO. | B68051 | REV. E |



NO CHANGES, THIS SHEET

