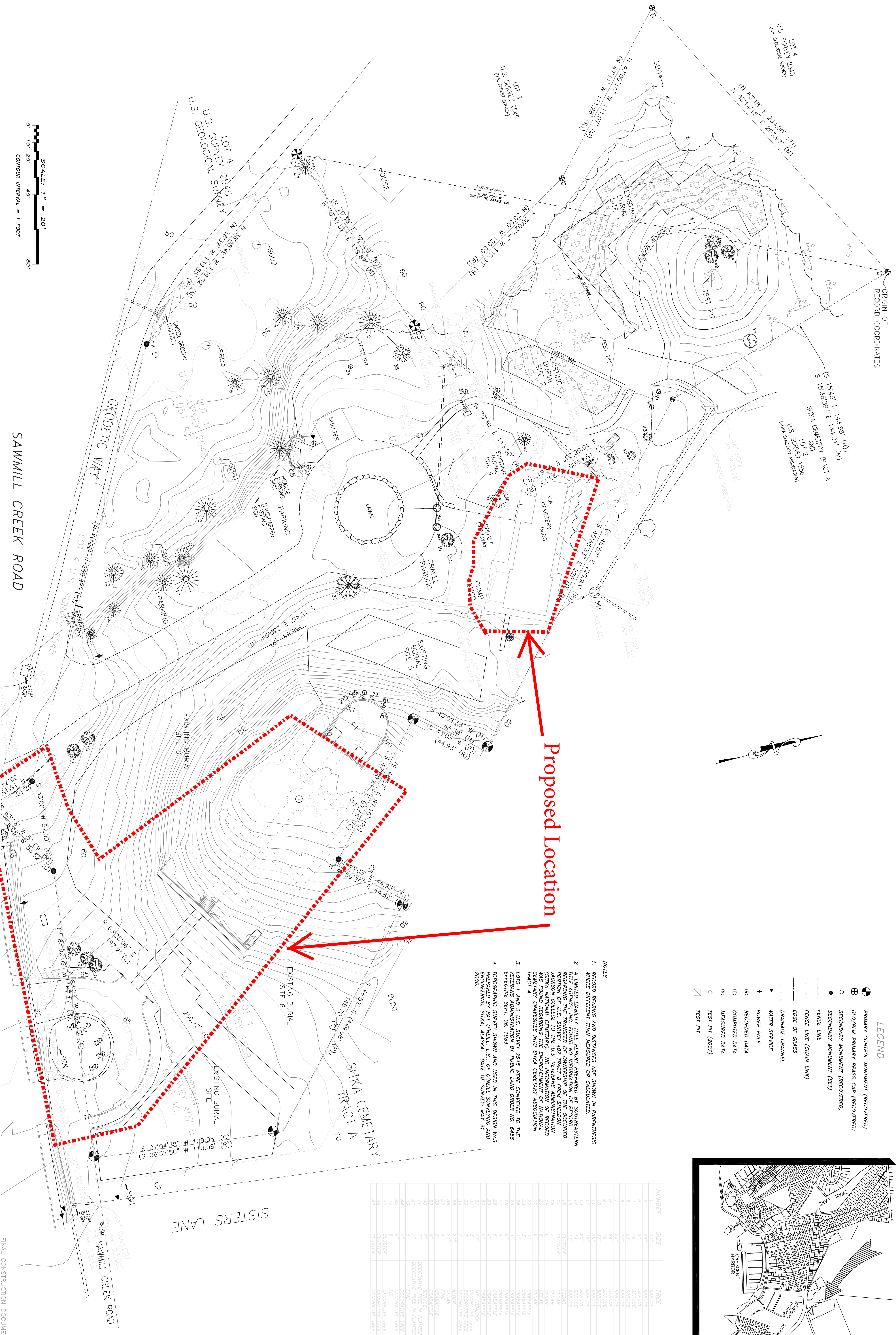


- LEGEND**
- PRIMARY CONTROL MONUMENT (RECOVERED)
  - GLD/BLM PRIMARY BRASS CAP (RECOVERED)
  - SECONDARY MONUMENT (RECOVERED)
  - SECONDARY MONUMENT (SET)
  - FENCE LINE
  - FENCE LINE (CHAIN LINK)
  - EDGE OF GRASS
  - DRAINAGE CHANNEL
  - WATER SERVICE
  - POWER POLE
  - RECORDED DATA
  - COMPUTED DATA
  - MEASURED DATA
  - TEST PIT (2007)
  - TEST PIT

- NOTES**
- RECORD BEARING AND DISTANCES ARE SHOWN IN PARENTHESIS WHERE DIFFERENT THAN MEASURED OR CALCULATED.
  - A LIMITED LIABILITY TITLE REPORT PREPARED BY SOUTHEASTERN TITLE COMPANY, L.P., DATED 08/14/07, REVEALS THAT THE PORTION OF U.S. SURVEY 407 TRACT B FROM SHELTON JACKSON COLLEGE TO THE U.S. VETERANS ADMINISTRATION WAS FOUND REGARDING THE ENCROACHMENT OF NATIONAL CEMETARY GRAVESITES INTO SINKA CEMETERY ASSOCIATION TRACT A.
  - LOTS 1 AND 2 U.S. SURVEY 2545 WERE CONVERTED TO THE VETERANS ADMINISTRATION BY PUBLIC LAND ORDER NO. 6458 EFFECTIVE SEPT. 08, 1983.
  - TOPOGRAPHIC SURVEY SHOWN AND USED IN THIS DESIGN WAS PREPARED BY PAT O'NEILL, L.S., OF O'NEILL SURVEYING AND ENGINEERING, SINKA, ALASKA. DATE OF SURVEY: MAY 31, 2006.

NUMBER	SIZE	TREE
1	12"	SPRUCE
2	28"	SPRUCE
3	21"	SPRUCE
4	23"	SPRUCE
5	23"	SPRUCE
6	17"	SPRUCE
7	24"	SPRUCE
8	24"	SPRUCE
9	19"	SPRUCE
10	35"	SPRUCE
11	18"	SPRUCE
12	20"	SPRUCE
13	14"	SPRUCE
14	14"	SPRUCE
15	14"	SPRUCE
16	20"	SPRUCE
17	20"	SPRUCE
18	7"	SPRUCE
19	7"	SPRUCE
20	6"	SPRUCE
21	6"	SPRUCE
22	6"	SPRUCE
23	6"	SPRUCE
24	3"	SPRUCE
25	3"	SPRUCE
26	6"	SPRUCE
27	6"	SPRUCE
28	6"	SPRUCE
29	6"	SPRUCE
30	6"	SPRUCE
31	6"	SPRUCE
32	6"	SPRUCE
33	7"	SPRUCE
34	7"	SPRUCE
35	21"	SPRUCE
36	21"	SPRUCE
37	4"	SPRUCE
38	4"	SPRUCE
39	4"	SPRUCE
40	7"	SPRUCE
41	7"	SPRUCE
42	7"	SPRUCE
43	6"	SPRUCE
44	6"	SPRUCE
45	6"	SPRUCE
46	8"	SPRUCE
47	8"	SPRUCE
48	CLUSTER	SPRUCE
49	CLUSTER	SPRUCE



SAWMILL CREEK ROAD

SCALE: 1" = 20'  
0' 10' 20' 40' 60'  
CONTOUR INTERVAL = 1 FOOT

Revisions

No.	Date	Description

General Contractors  
3237 WEST 32ND AVE  
ANCHORAGE, ALASKA 99517  
PHONE (907) 677-7944  
FAX (907) 677-7945

R & M ENGINEERING, INC.  
ENGINEERS GEOLOGISTS SURVEYORS  
6205 GLACIER HIGHWAY  
JUNEAU, AK. 99801  
Phone 907-780-6060  
Fax 907-780-4611  
rmengineering@rmineau.com

Drawing Title

EXISTING SITE CONDITIONS

Approved NSN Director

Approved Director, Construction Management

Project Title

BURIAL SITE EXPANSION  
ORPH SITE INSTALLATION  
DESIGN BUILD  
SINKA NATIONAL CEMETERY

Building Number

JMP

Drawn

JIN/KAP

Location

Lot 2 U.S. Survey 2545  
Sinka, Alaska 99535

Date

8/20/07

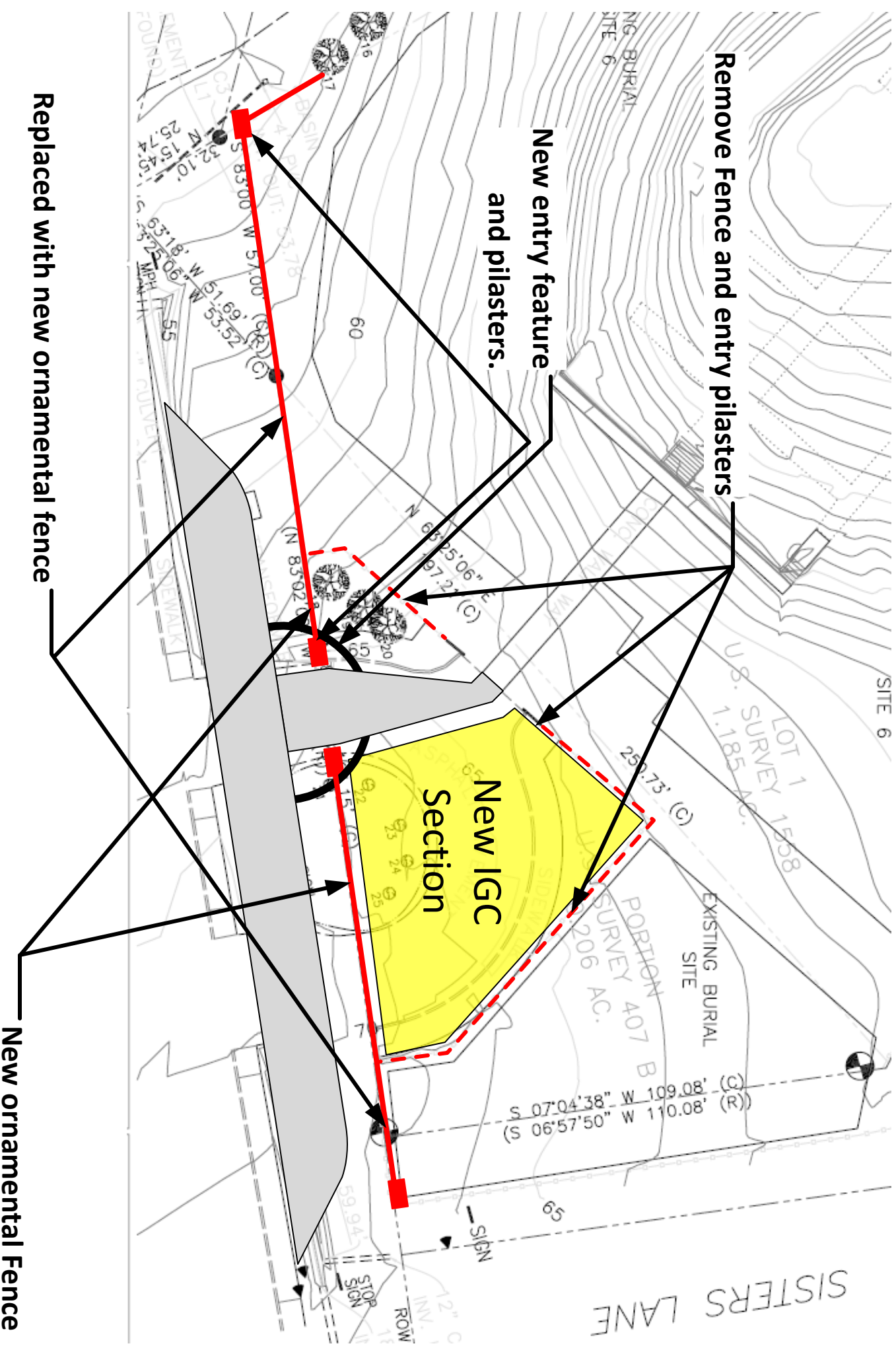
Project No.

905CM3005

Revising No.

B1





Remove Fence and entry pilasters

New entry feature  
and pilasters.

New IGC  
Section

Replaced with new ornamental fence

New ornamental Fence