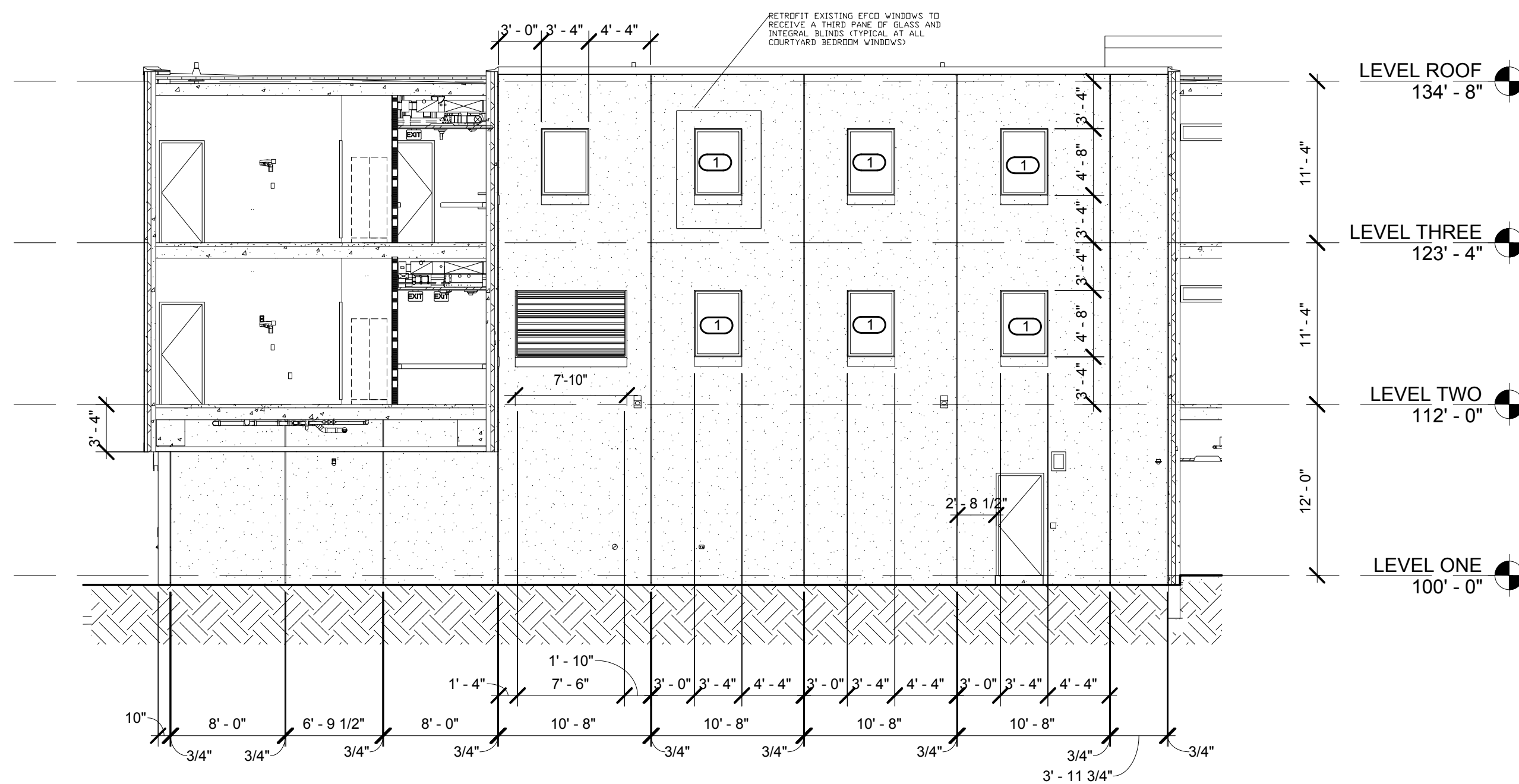
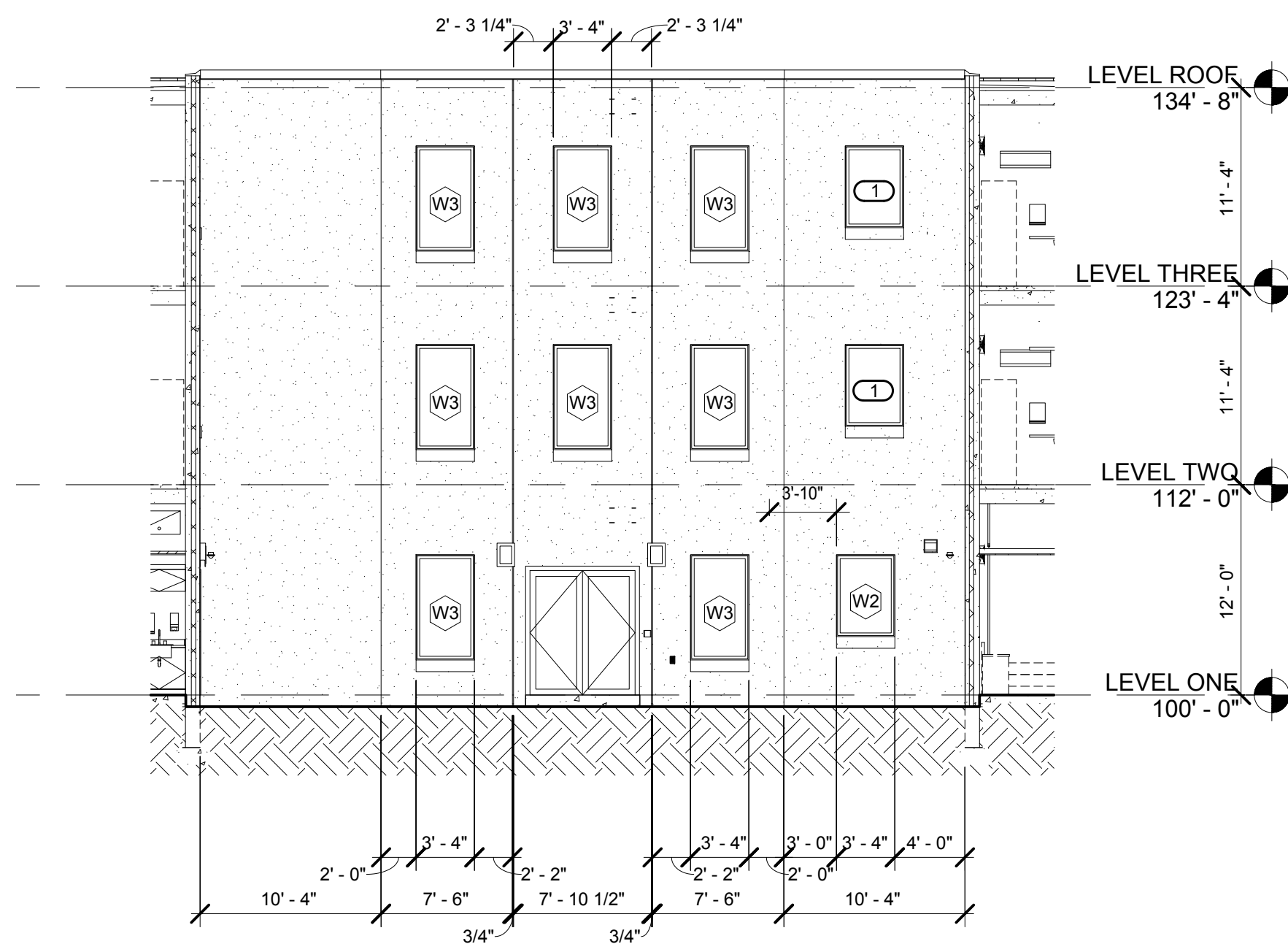


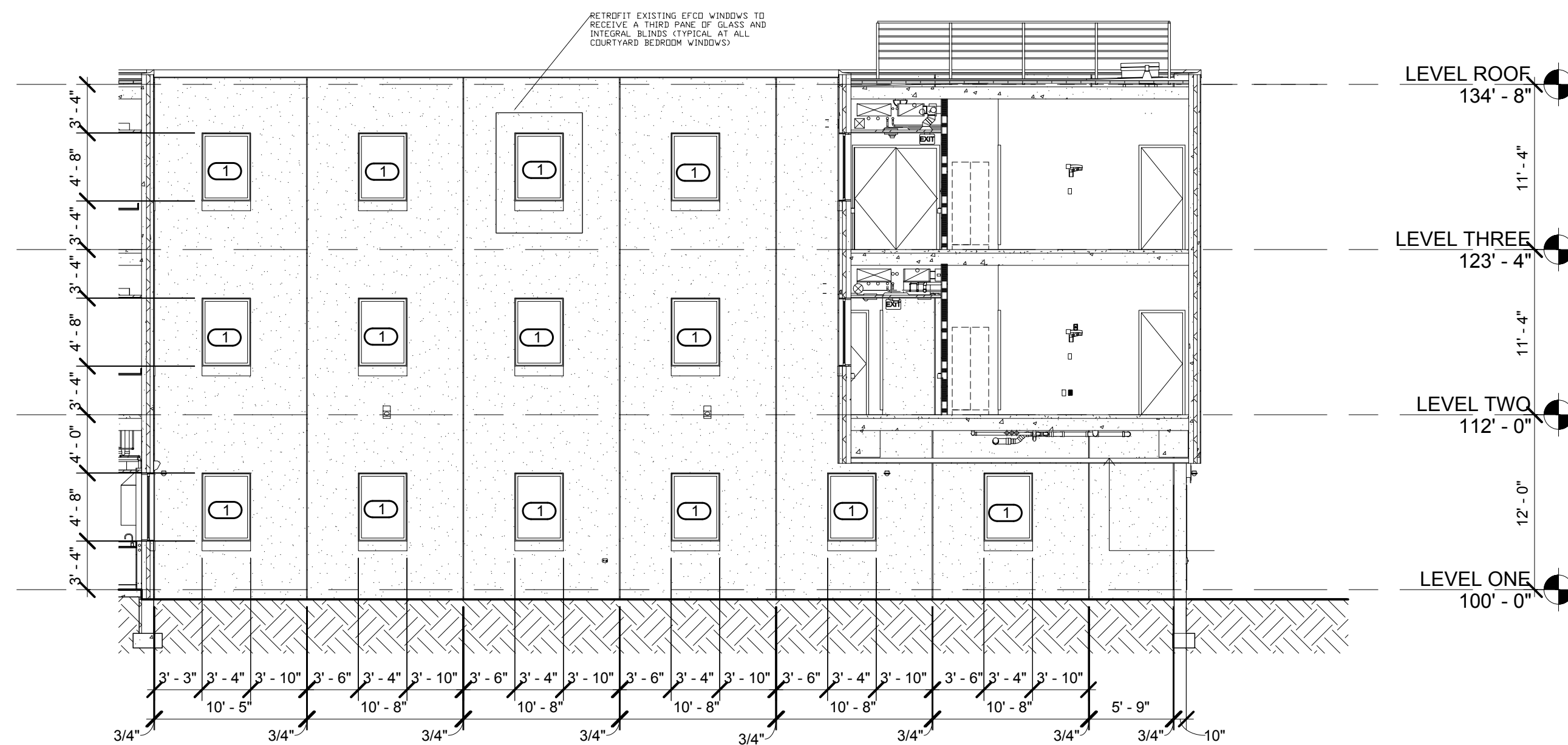
1 EXTERIOR ELEVATION COURTYARD FACING SOUTH
1/8" = 1'-0"



2 EXTERIOR ELEVATION COURTYARD FACING WEST
1/8" = 1'-0"



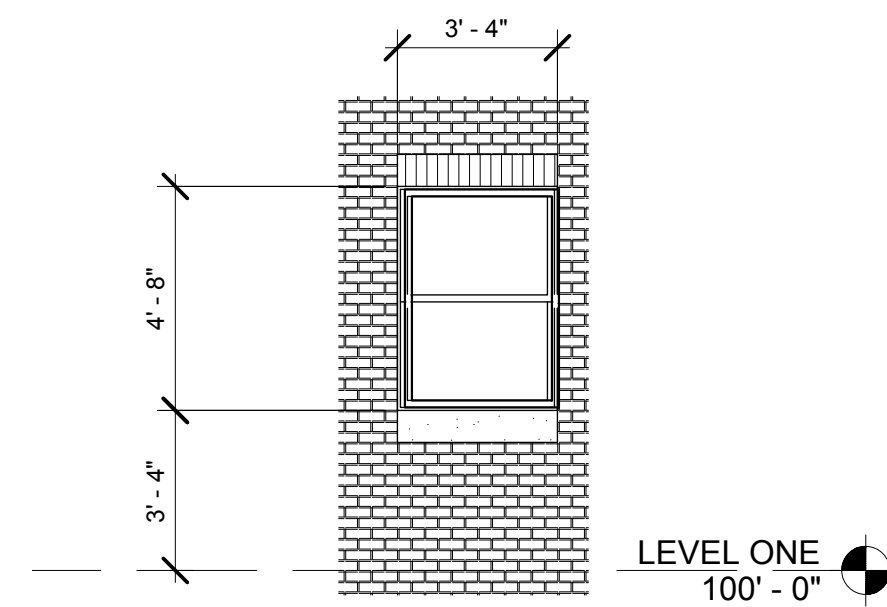
3 EXTERIOR ELEVATION COURTYARD FACING NORTH
1/8" = 1'-0"



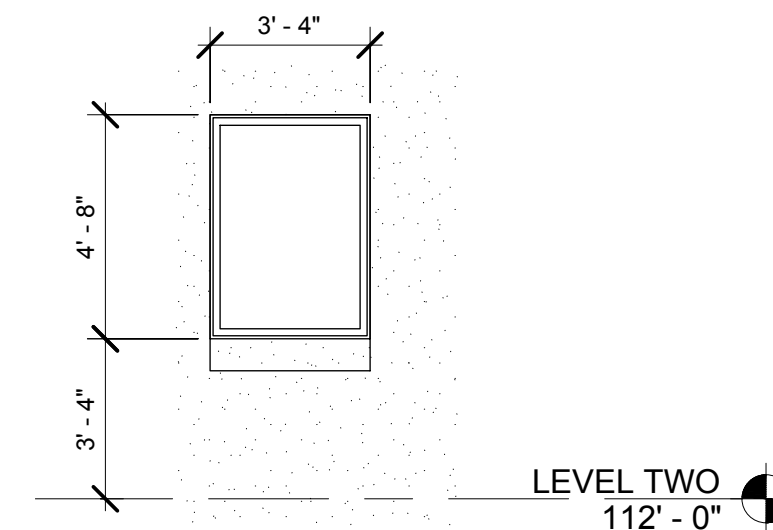
4 EXTERIOR ELEVATION COURTYARD FACING EAST
1/8" = 1'-0"

KEYED NOTES

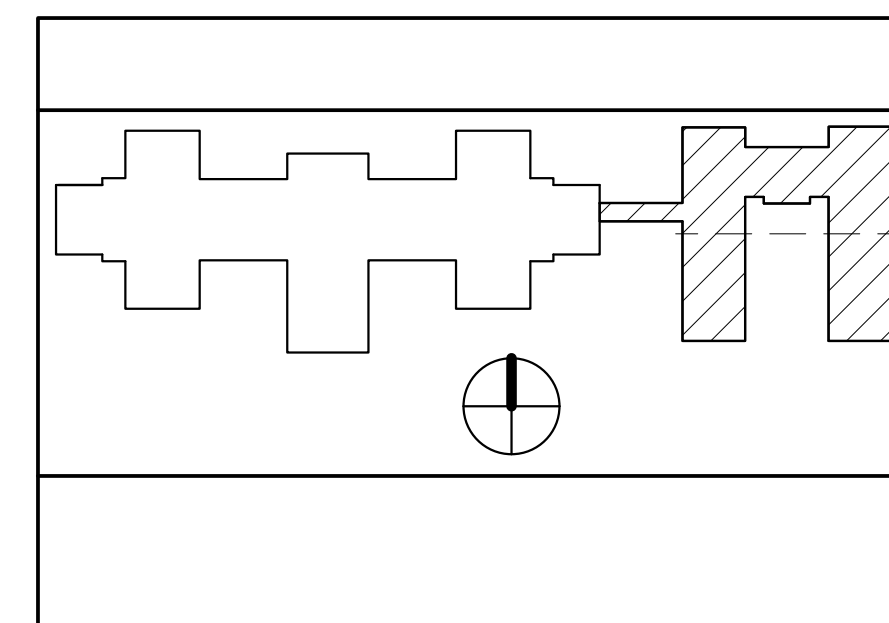
1 RETROFIT EXISTING W2 STYLE WINDOW TO W1 STYLE WINDOW. WILL REQUIRE INTEGRAL BLINDS, NEW INTERIOR WINDOW PANNING, AND A THIRD PANE OF GLAZING.



7 WDW TYPE W1 ELEVATION
1/4" = 1'-0"



8 WDW TYPE W2 ELEVATION
1/4" = 1'-0"



FULLY SPRINKLED
100% CD NOVEMBER 8, 2017

| | | | | | | | | | | |
|--------------|--|--|----------------------|--|--|--------------------------------------|--|------------------------------|---|-----------------------------|
| CONSULTANTS: | | | ARCHITECT/ENGINEERS: | | | Drawing Title EXTERIOR ELEVATIONS | Project Title COMPLETE CONSTRUCTION 1ST & 2ND FLOOR B405 | Project Number 676-18-107 | Office of Construction and Facilities Management | |
| | | | | | | Approved: Project Director | Location VA MEDICAL CENTER TOMAH, WI | Building Number 405 | | |
| | | | | | | | Date 07/25/2017 | Checked VAS | Drawn JE/BH | Drawing Number 405 AS302 |
| | | | | | | | | Dwg. 31 of 92 | Department of Veterans Affairs | |