

Tomah VAMC Construction Building B405 For Mental Health RRTP Beds

TOMAH, WISCONSIN

WALL PROTECTION DRAWINGS

DATE: 4/29/2015

NOTE:
BASED ON DRAWINGS DATED 02/26/14, NO REVISIONS, AND ADDENDA 1-7.

ARCHITECT:

ANDERSON ENGINEERING
PLYMOUTH, MN

PREPARED BY:



KOROSEAL
INTERIOR PRODUCTS

716 Industrial Park Road, P.O. Box 182
Muncy, PA 17756
Phone: (570) 546-3716
Fax: (570) 546-5175
www.koroseal.com

CLARIFICATION REQUIRED/NOTES

NOTES:
• DOOR PROTECTION AND OR DOOR FRAME PROTECTION ARE ASSUMED TO BE SUPPLIED BY OTHERS.
• INCLUDES PRODUCT TYPES AND SIZES AS INDICATED BY WALL PROTECTION KEYNOTES.
• DOOR OVERLAP AND/OR DOOR FRAME PROTECTION TYPES, SIZES, AND DETAILS, IF THERE WAS DISCREPANCY BETWEEN THE SPECIFICATIONS AND DRAWINGS, THE DRAWINGS WERE USED AS THE BASIS OF ESTIMATE. IF NO ANNOTATIONS EXISTED ON THE DRAWINGS, NO PRODUCT WAS ESTIMATED.

INDEX OF DRAWINGS

DRAWING #	DESCRIPTION
COVERPAGE	
405-ID101-WP	WALL PROTECTION
405-ID103-WP	WALL PROTECTION
A1-WPDET	DETAILS AND ELEVATIONS-WALL PROTECTION

KOROSEAL
INTERIOR PRODUCTS

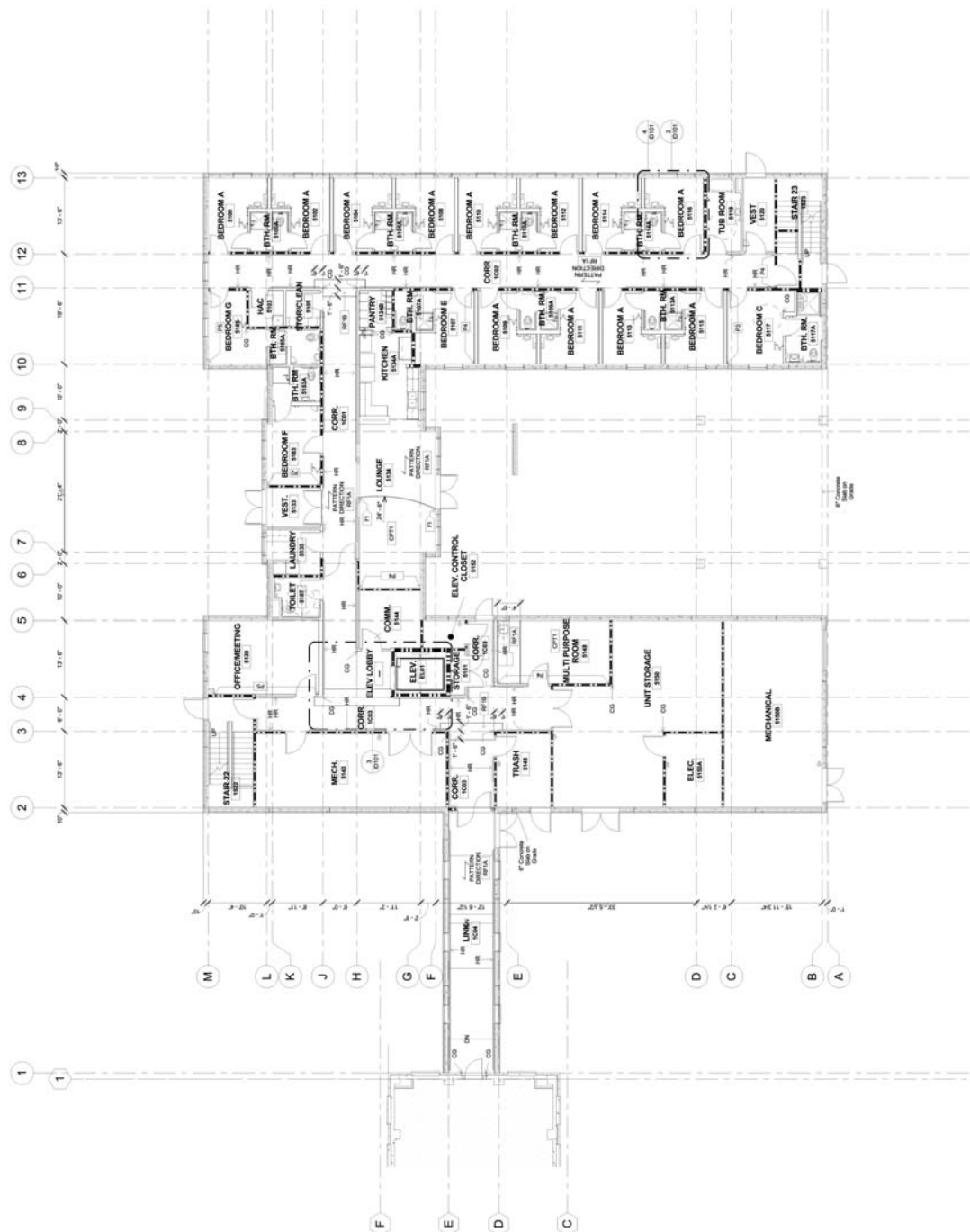
716 Industrial Park Road, P.O. Box 182
Muncy, PA 17756
Phone: (570) 546-3716 Fax: (570) 546-5175
www.koroseal.com

DRAWING #
COVERPAGE

ARCHITECT:
ANDERSON ENGINEERING
PLYMOUTH, MN

P00045946

TOMAH VAMC CONSTRUCTION BUILDING B405 FOR MENTAL HEALTH RRTP BEDS



FINISH AND WALL PROTECTION PLAN LEVEL ONE

MATERIAL LIST

1102 (60V)	.030" TRAFFIC PATTERNS 48"X96" SHEET
120 LF	PRODUCT CODE: R921-21 ORLEANS / DAMASK
1102 (60V)	.030" TRAFFIC PATTERNS 48"X96" SHEET
28 LF	PRODUCT CODE: R921-21 ORLEANS / DAMASK

[illegible]

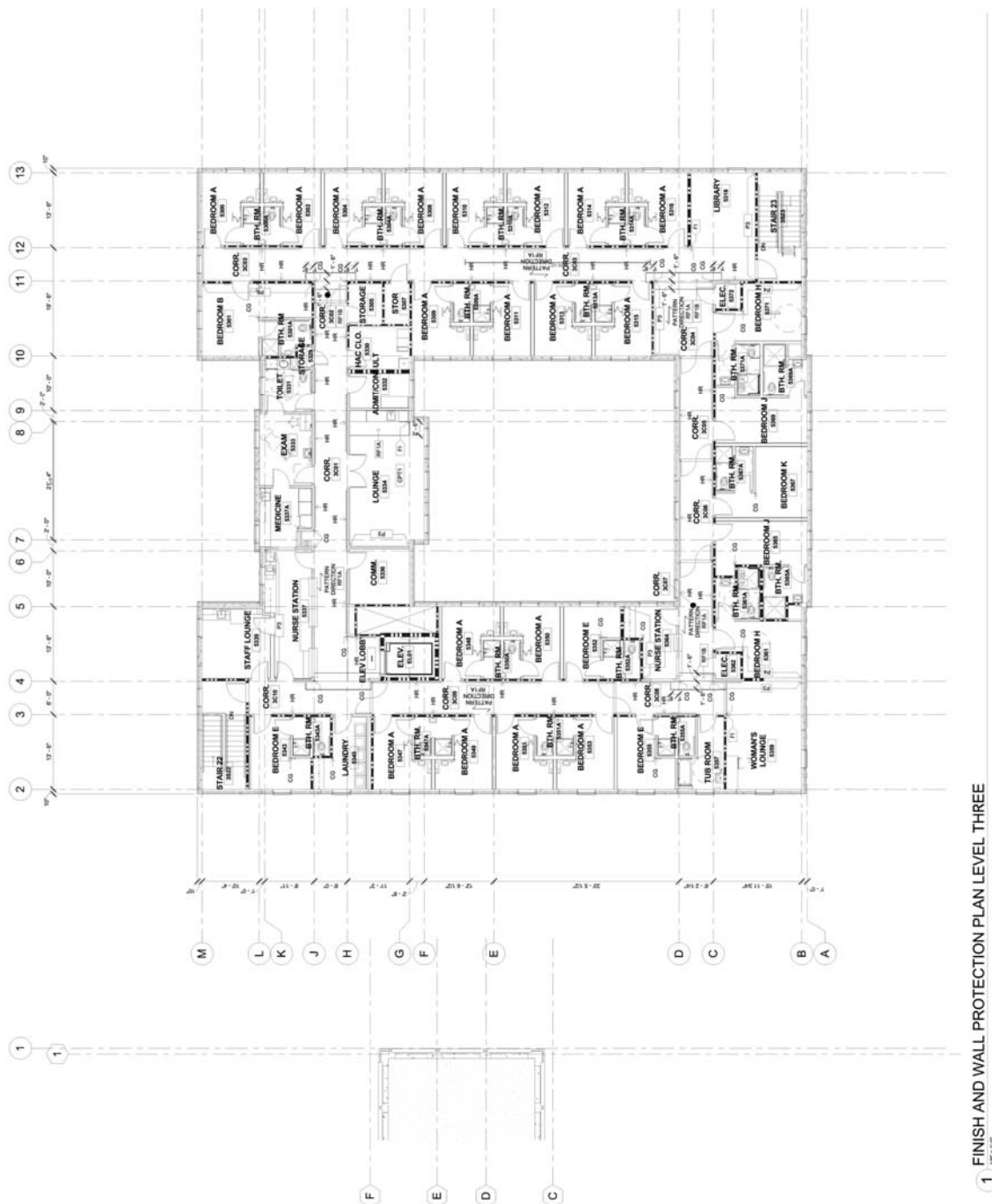
0	4/29/15	ISSUED FOR APPROVAL
---	---------	---------------------

PROJECT NAME:
Tomah VAMC Construction Building B405
For 75 Mental Health RRTD Beds

KEY PLAN	KOROGARD PROJECT #:
	P00045946

DRAWING NAME:

BUILDING 454 GROUND FLOOR 300' x 7" = 883.3 F.F.E.
 BUILDING 454 FIRST FLOOR 300' x 7" = 883.3 F.F.E.
 LEVEL TWO 117.0' x 964.0' = 805 F.F.E.
 LEVEL THREE 123.4' x 873.3 F.F.E.
 LEVEL FOUR 134.0' x 966.0 F.F.E.



FINISH AND WALL PROTECTION PLAN LEVEL THREE

MATERIAL LIST

1102 (8941)	.007 TRAFFIC PATTERNS 48"X68" SHEET	208 LF	PRODUCT COLOR: 1991-21 OCEANS / DAMASK
<div> <div> </div> <div> </div> </div>			
1102 (8941)	.007 TRAFFIC PATTERNS 48"X68" SHEET	106 LF	PRODUCT COLOR: 1991-21 OCEANS / DAMASK
<div> <div> </div> <div> </div> </div>			
1102 (8941)	.007 TRAFFIC PATTERNS 48"X68" SHEET	26 LF	PRODUCT COLOR: 1991-21 OCEANS / DAMASK
<div> <div> </div> <div> </div> </div>			

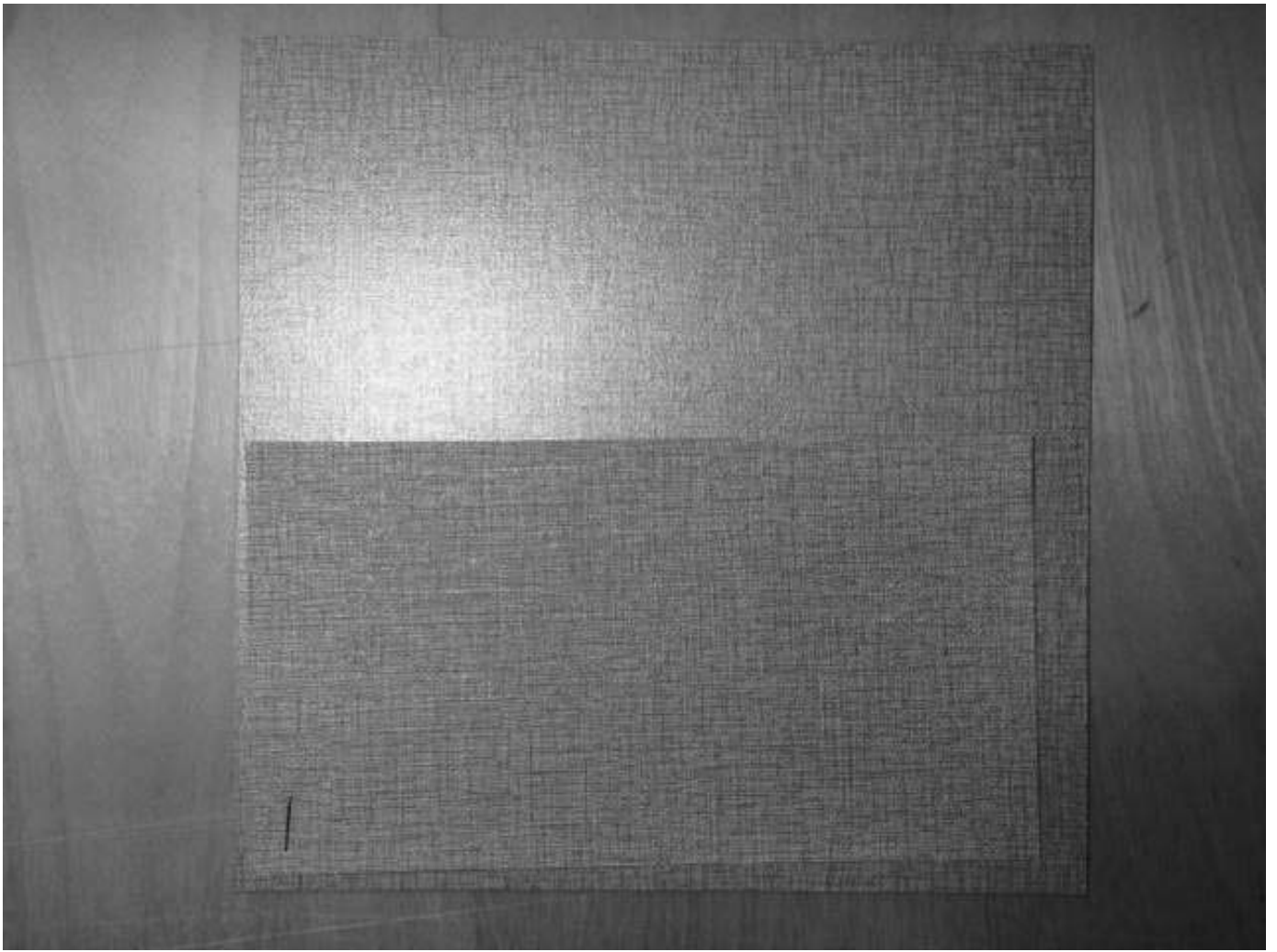
REV.	DATE	DESCRIPTION
0	4/29/15	ISSUED FOR APPROVAL

PROJECT NAME:	4/29/15	ISSUED FOR APPROVAL
<p>Tomah VAMC Construction Building B405 For 75 Mental Health RRTD Beds</p> <p>TOMAH, WISCONSIN</p>		

KEY PLAN	KOROGARD PROJECT #:
	P00045946

DRAWING NAME: WALL PROTECTION

LEVEL 405: 404' 0" TO 405' 0" (100' 0" - 100' 0")
LEVEL 404: 399' 0" TO 400' 0" (99' 0" - 100' 0")
LEVEL 403: 394' 0" TO 395' 0" (94' 0" - 95' 0")
LEVEL 402: 389' 0" TO 390' 0" (89' 0" - 90' 0")
LEVEL 401: 384' 0" TO 385' 0" (84' 0" - 85' 0")
LEVEL 400: 379' 0" TO 380' 0" (79' 0" - 80' 0")
LEVEL 399: 374' 0" TO 375' 0" (74' 0" - 75' 0")
LEVEL 398: 369' 0" TO 370' 0" (69' 0" - 70' 0")
LEVEL 397: 364' 0" TO 365' 0" (64' 0" - 65' 0")
LEVEL 396: 359' 0" TO 360' 0" (59' 0" - 60' 0")
LEVEL 395: 354' 0" TO 355' 0" (54' 0" - 55' 0")
LEVEL 394: 349' 0" TO 350' 0" (49' 0" - 50' 0")
LEVEL 393: 344' 0" TO 345' 0" (44' 0" - 45' 0")
LEVEL 392: 339' 0" TO 340' 0" (39' 0" - 40' 0")
LEVEL 391: 334' 0" TO 335' 0" (34' 0" - 35' 0")
LEVEL 390: 329' 0" TO 330' 0" (29' 0" - 30' 0")
LEVEL 389: 324' 0" TO 325' 0" (24' 0" - 25' 0")
LEVEL 388: 319' 0" TO 320' 0" (19' 0" - 20' 0")
LEVEL 387: 314' 0" TO 315' 0" (14' 0" - 15' 0")
LEVEL 386: 309' 0" TO 310' 0" (9' 0" - 10' 0")
LEVEL 385: 304' 0" TO 305' 0" (4' 0" - 5' 0")
LEVEL 384: 299' 0" TO 300' 0" (0' 0" - 1' 0")
LEVEL 383: 294' 0" TO 295' 0" (0' 0" - 1' 0")
LEVEL 382: 289' 0" TO 290' 0" (0' 0" - 1' 0")
LEVEL 381: 284' 0" TO 285' 0" (0' 0" - 1' 0")
LEVEL 380: 279' 0" TO 280' 0" (0' 0" - 1' 0")
LEVEL 379: 274' 0" TO 275' 0" (0' 0" - 1' 0")
LEVEL 378: 269' 0" TO 270' 0" (0' 0" - 1' 0")
LEVEL 377: 264' 0" TO 265' 0" (0' 0" - 1' 0")
LEVEL 376: 259' 0" TO 260' 0" (0' 0" - 1' 0")
LEVEL 375: 254' 0" TO 255' 0" (0' 0" - 1' 0")
LEVEL 374: 249' 0" TO 250' 0" (0' 0" - 1' 0")
LEVEL 373: 244' 0" TO 245' 0" (0' 0" - 1' 0")
LEVEL 372: 239' 0" TO 240' 0" (0' 0" - 1' 0")
LEVEL 371: 234' 0" TO 235' 0" (0' 0" - 1' 0")
LEVEL 370: 229' 0" TO 230' 0" (0' 0" - 1' 0")
LEVEL 369: 224' 0" TO 225' 0" (0' 0" - 1' 0")
LEVEL 368: 219' 0" TO 220' 0" (0' 0" - 1' 0")
LEVEL 367: 214' 0" TO 215' 0" (0' 0" - 1' 0")
LEVEL 366: 209' 0" TO 210' 0" (0' 0" - 1' 0")
LEVEL 365: 204' 0" TO 205' 0" (0' 0" - 1' 0")
LEVEL 364: 199' 0" TO 200' 0" (0' 0" - 1' 0")
LEVEL 363: 194' 0" TO 195' 0" (0' 0" - 1' 0")
LEVEL 362: 189' 0" TO 190' 0" (0' 0" - 1' 0")
LEVEL 361: 184' 0" TO 185' 0" (0' 0" - 1' 0")
LEVEL 360: 179' 0" TO 180' 0" (0' 0" - 1' 0")
LEVEL 359: 174' 0" TO 175' 0" (0' 0" - 1' 0")
LEVEL 358: 169' 0" TO 170' 0" (0' 0" - 1' 0")
LEVEL 357: 164' 0" TO 165' 0" (0' 0" - 1' 0")
LEVEL 356: 159' 0" TO 160' 0" (0' 0" - 1' 0")
LEVEL 355: 154' 0" TO 155' 0" (0' 0" - 1' 0")
LEVEL 354: 149' 0" TO 150' 0" (0' 0" - 1' 0")
LEVEL 353: 144' 0" TO 145' 0" (0' 0" - 1' 0")
LEVEL 352: 139' 0" TO 140' 0" (0' 0" - 1' 0")
LEVEL 351: 134' 0" TO 135' 0" (0' 0" - 1' 0")
LEVEL 350: 129' 0" TO 130' 0" (0' 0" - 1' 0")
LEVEL 349: 124' 0" TO 125' 0" (0' 0" - 1' 0")
LEVEL 348: 119' 0" TO 120' 0" (0' 0" - 1' 0")
LEVEL 347: 114' 0" TO 115' 0" (0' 0" - 1' 0")
LEVEL 346: 109' 0" TO 110' 0" (0' 0" - 1' 0")
LEVEL 345: 104' 0" TO 105' 0" (0' 0" - 1' 0")
LEVEL 344: 99' 0" TO 100' 0" (0' 0" - 1' 0")
LEVEL 343: 94' 0" TO 95' 0" (0' 0" - 1' 0")
LEVEL 342: 89' 0" TO 90' 0" (0' 0" - 1' 0")
LEVEL 341: 84' 0" TO 85' 0" (0' 0" - 1' 0")
LEVEL 340: 79' 0" TO 80' 0" (0' 0" - 1' 0")
LEVEL 339: 74' 0" TO 75' 0" (0' 0" - 1' 0")
LEVEL 338: 69' 0" TO 70' 0" (0' 0" - 1' 0")
LEVEL 337: 64' 0" TO 65' 0" (0' 0" - 1' 0")
LEVEL 336: 59' 0" TO 60' 0" (0' 0" - 1' 0")
LEVEL 335: 54' 0" TO 55' 0" (0' 0" - 1' 0")
LEVEL 334: 49' 0" TO 50' 0" (0' 0" - 1' 0")
LEVEL 333: 44' 0" TO 45' 0" (0' 0" - 1' 0")
LEVEL 332: 39' 0" TO 40' 0" (0' 0" - 1' 0")
LEVEL 331: 34' 0" TO 35' 0" (0' 0" - 1' 0")
LEVEL 330: 29' 0" TO 30' 0" (0' 0" - 1' 0")
LEVEL 329: 24' 0" TO 25' 0" (0' 0" - 1' 0")
LEVEL 328: 19' 0" TO 20' 0" (0' 0" - 1' 0")
LEVEL 327: 14' 0" TO 15' 0" (0' 0" - 1' 0")
LEVEL 326: 9' 0" TO 10' 0" (0' 0" - 1' 0")
LEVEL 325: 4' 0" TO 5' 0" (0' 0" - 1' 0")
LEVEL 324: 0' 0" TO 1' 0" (0' 0" - 1' 0")
LEVEL 323: 0' 0" TO 1' 0" (0' 0" - 1' 0")
LEVEL 322: 0' 0" TO 1' 0" (0' 0" - 1' 0")
LEVEL 321: 0' 0" TO 1' 0" (0' 0" - 1' 0")
LEVEL 320: 0' 0" TO 1' 0" (0' 0" - 1' 0")
LEVEL 319: 0' 0" TO 1' 0" (0' 0" - 1' 0")
LEVEL 318: 0' 0" TO 1' 0" (0' 0" - 1' 0")
LEVEL 317: 0' 0" TO 1' 0" (0' 0" - 1' 0")
LEVEL 316: 0' 0" TO 1' 0" (0' 0" - 1' 0")
LEVEL 315: 0' 0" TO 1' 0" (0' 0" - 1' 0")
LEVEL 314: 0' 0" TO 1' 0" (0' 0" - 1' 0")
LEVEL 313: 0' 0" TO 1' 0" (0' 0" - 1' 0")
LEVEL 312: 0' 0" TO 1' 0" (0' 0" - 1' 0")
LEVEL 311: 0' 0" TO 1' 0" (0' 0" - 1' 0")
LEVEL 310: 0' 0" TO 1' 0" (0' 0" - 1' 0")
LEVEL 309: 0' 0" TO 1' 0" (0' 0" - 1' 0")
LEVEL 308: 0' 0" TO 1' 0" (0' 0" - 1' 0")
LEVEL 307: 0' 0" TO 1' 0" (0' 0" - 1' 0")
LEVEL 306: 0' 0" TO 1' 0" (0' 0" - 1' 0")
LEVEL 305: 0' 0" TO 1' 0" (0' 0" - 1' 0")
LEVEL 304: 0' 0" TO 1' 0" (0' 0" - 1' 0")
LEVEL 303: 0' 0" TO 1' 0" (0' 0" - 1' 0")
LEVEL 302: 0' 0" TO 1' 0" (0' 0" - 1' 0")
LEVEL 301: 0' 0" TO 1' 0" (0' 0" - 1' 0")
LEVEL 300: 0' 0" TO 1' 0" (0' 0" - 1' 0")
LEVEL 299: 0' 0" TO 1' 0" (0' 0" - 1' 0")
LEVEL 298: 0' 0" TO 1' 0" (0' 0"



ACCOMPANYING AMENDMENT VA69D-18-B-1687 00005

KOROGARD®
Wall Protection Systems

Traffic Patterns®

Pattern Color: Olefin Densupac

Product Number: TP #921-21

- Class I/A fire code compliant (ASTM E 84)
- Smooth Surface
- (CHARCONAL) 2" Thickness
- Low-Profile: Meets California Indoor Air Quality #1388

For information, additional samples, specifications or installation instructions, please contact your local Korogard distributor by calling 1-800-428-5448.

KOROGARD CORP.

Protective Wall Protection Systems

©2004 Korogard Industries

