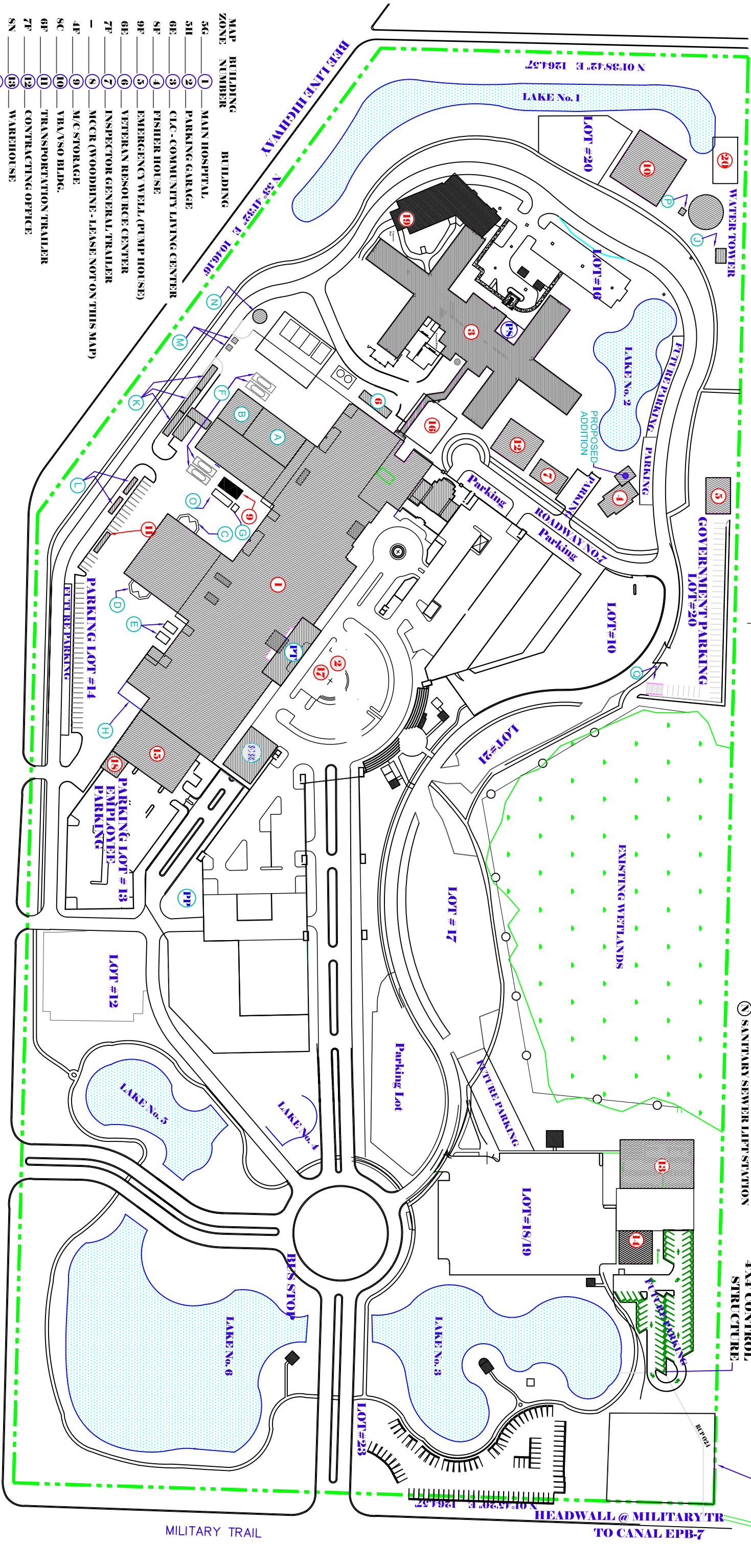


OTHER LETTER CODES

- PP PROPOSED CSI PROJECT: PET/CT BLDG (2500 SQFT)
ER ER EXPANSION PROJECT (6600 SQFT)
PT CSI PROJECT ENCLOSE 4TH FLOOR TERRACE (5200 SQFT)
PS PROPOSED SOLARIUM
H HOSPICE WING

BUILDING #1: VA MEDICAL CENTER

- A SWITCHGEAR ROOM
B EMERGENCY GENERATOR ROOM (4) 100gal DAYTANKS
C CLEAN LAUNDRY DOCK LIFT
D SOILED LAUNDRY DOCK LIFT
E TRASH COMPACTORS
F UNDERGROUND FUEL TANKS (2) 10,000 gal
G USED COOKING OIL
H DOCK WAREHOUSE LIFT
I GAS TANK 500 gal & DIESEL TANK 500 gal
J ENGINE GENERATORS (3) 10,000 gal
K FUEL TANKS (2) 12,000 gal
M MISCELLANEOUS STORAGE SHEDS
N SANITARY SEWER LIFT STATION
O HAZARDOUS WASTE SHED
P USED OIL
Q D55 FUEL TANK
R ENHANCED USED LEASE
S FIRE SAFETY BUILDING



- MAP ZONE BUILDING BUILDING
NUMBER NUMBER
3G 1 MAIN HOSPITAL
3H 2 PARKING GARAGE
6E 3 CLC - COMMUNITY LIVING CENTER
8F 4 FISHER HOUSE
9F 5 EMERGENCY WELL (PUMP HOUSE)
6E 6 VETERAN RESOURCE CENTER
7F 7 INSPECTOR GENERAL TRAILER
8 MCGR (WOODBINE - LEASE NOT ON THIS MAP)
4F 9 M/C STORAGE
8C 10 VBA/ISO BLDG.
6F 11 TRANSPORTATION TRAILER
7F 12 CONTRACTING OFFICE
8N 13 WAREHOUSE
8P 14 SUBSTANCE/MENTAL HEALTH (PTSD CLINIC)
3J 15 CANCER CENTER
6F 16 MENTAL HEALTH OUTPATIENT (2500 SQFT CSI PROJECT MENTAL HEALTH/HOMELESS PROGRAM)

SITE PLAN
IMPROVE PATIENT SPACE 1A
548-18-601