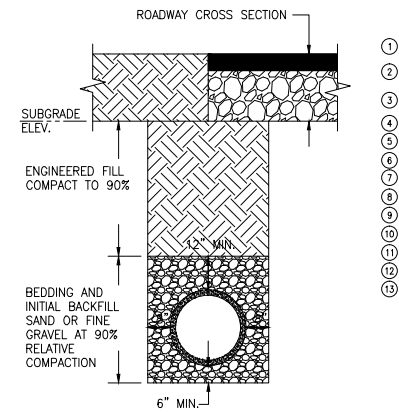
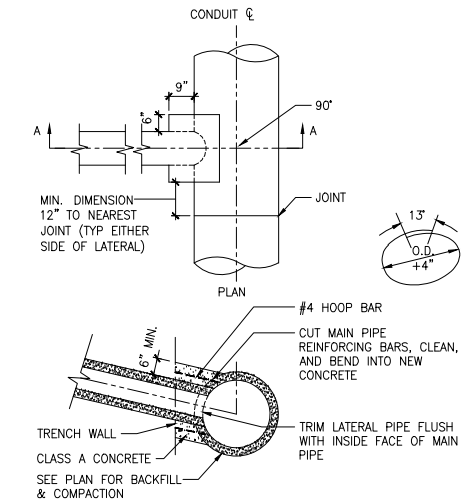


NOTES:

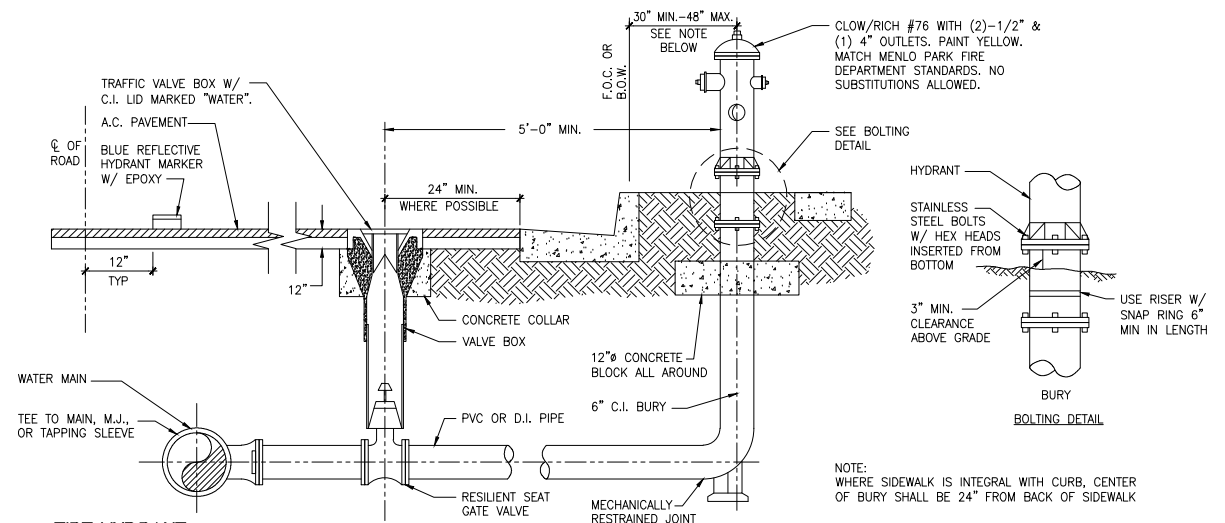
- TRENCH DETAIL FOR STORM DRAIN, SEWER, DOMESTIC WATER, & FIRE WATER ONLY.
- IMPORTED OR ONSITE SELECT FILL MATERIAL SHALL HAVE THE FOLLOWING PROPERTIES:
 - BE FREE ORGANIC OR HAZARDOUS MATERIAL
 - CONTAIN NO ROCKS GREATER THAN 3 INCHES IN ITS LARGEST DIMENSION
 - LIQUID LIMIT LESS THAN 40
 - CONTAIN AT LEAST 20% FINES (PASSING TRHU THE NO.200 SIEVE)
- WHERE UTILITY TRENCHES ENTER THE BUILDING PAD, AN IMPERMEABLE PLUG CONSISTING OF LEAN CONCRETE, AT LEAST FIVE FEET IN LENGTH, SHOULD BE INSTALLED WHERE TRENCHES ENTER THE BUILDING FOOTPRINT. IF TRENCHES ARE BACKFILLED WITH SAND OR GRAVEL, THEN THE 5' LONG LEAN CONCRETE PLUGS SHALL ALSO BE INSTALLED WHERE UTILITIES CROSS THE EDGES OF VEHICULAR PAVEMENTS. SEE SOILS REPORT FOR MORE INFORMATION.
- WHERE PIPE BEDDING AND COVER MATERIAL WILL BE BELOW GROUNDWATER, CRUSHED ROCK OR CALTRANS CLASS 2 PERMEABLE MATERIAL SHALL BE SUEd, AND WRAPPED IN FILTER FABRIC.



4 TRENCH BACKFILL
NO SCALE



2 STORM DRAIN PIPE CONNECTION
NO SCALE



10 FIRE HYDRANT
NO SCALE

CONSULTANTS: 	Stamp and Signature 	Drawing Title UTILITY DETAILS	Project Title FISHER HOUSE #2 SITE PREPARATION UTILITIES AND LANDSCAPING	Project Number 640-18-112	Office of Facility Planning and Development
		Approved Project Director - VAPAHCS OPPD	Location VAPAHCS, PAD PALO ALTO, CA	Building Number 	
Date 	Date 	Date 	Date 	Date 	Date

BID SET