

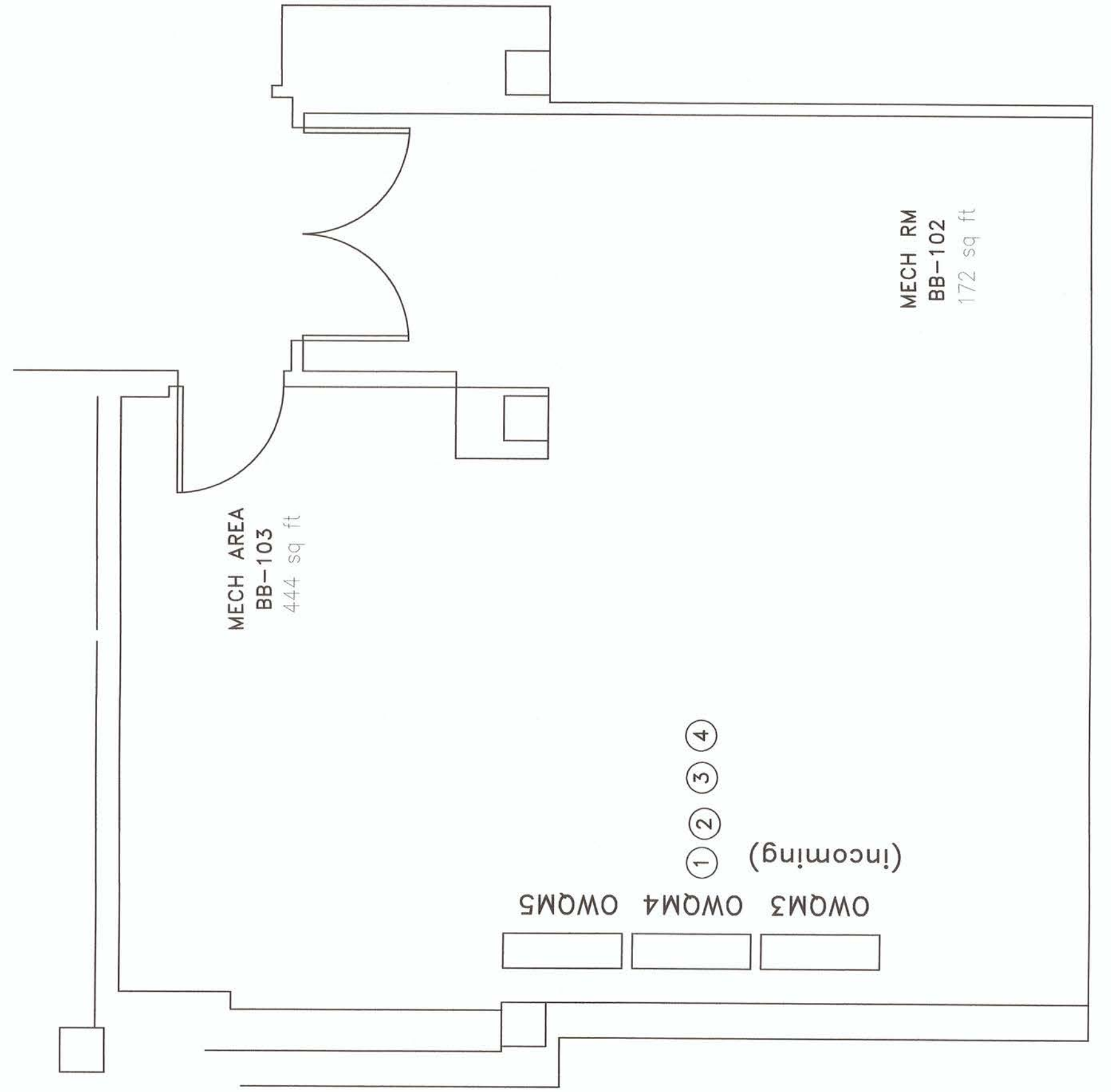
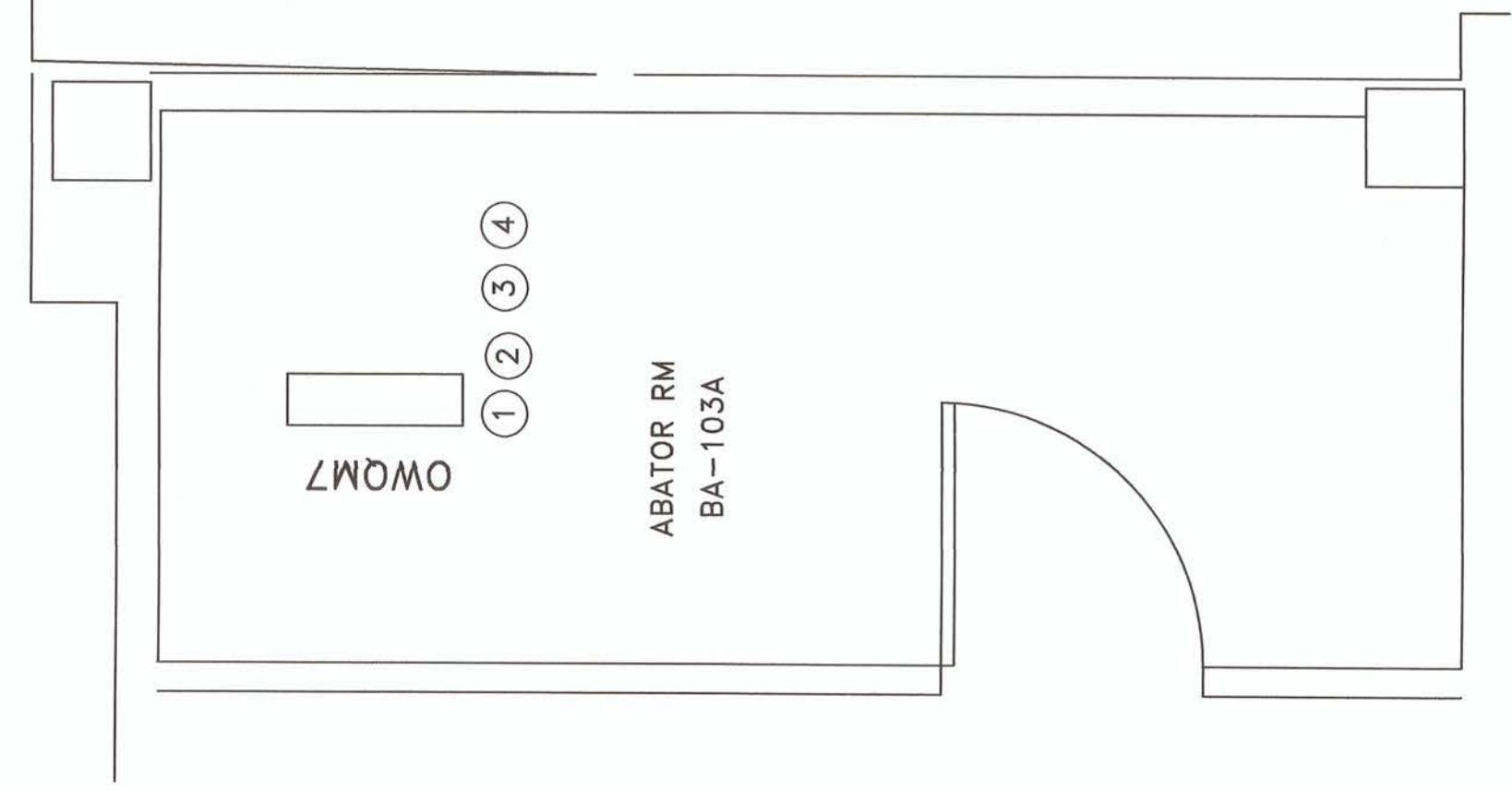
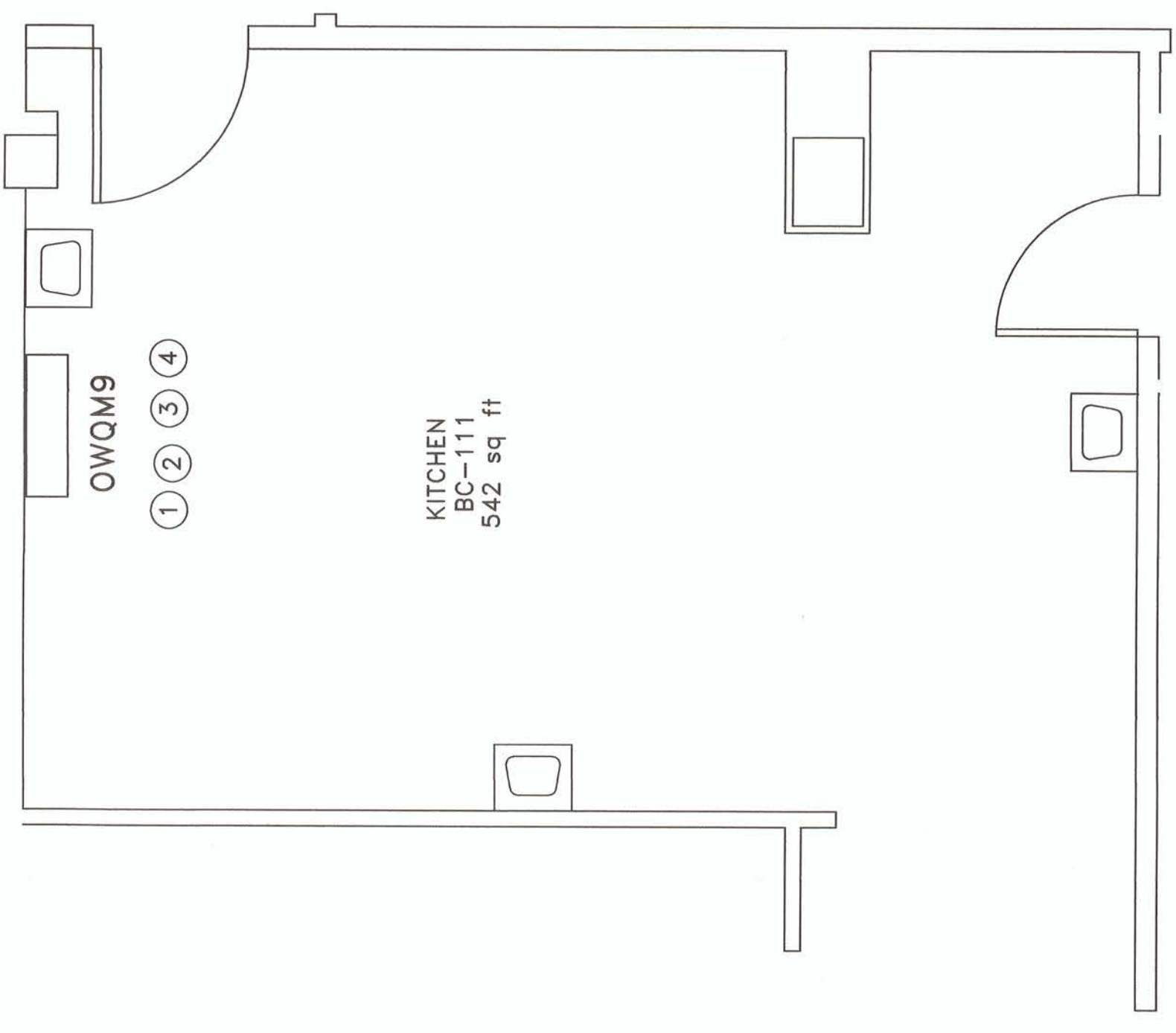
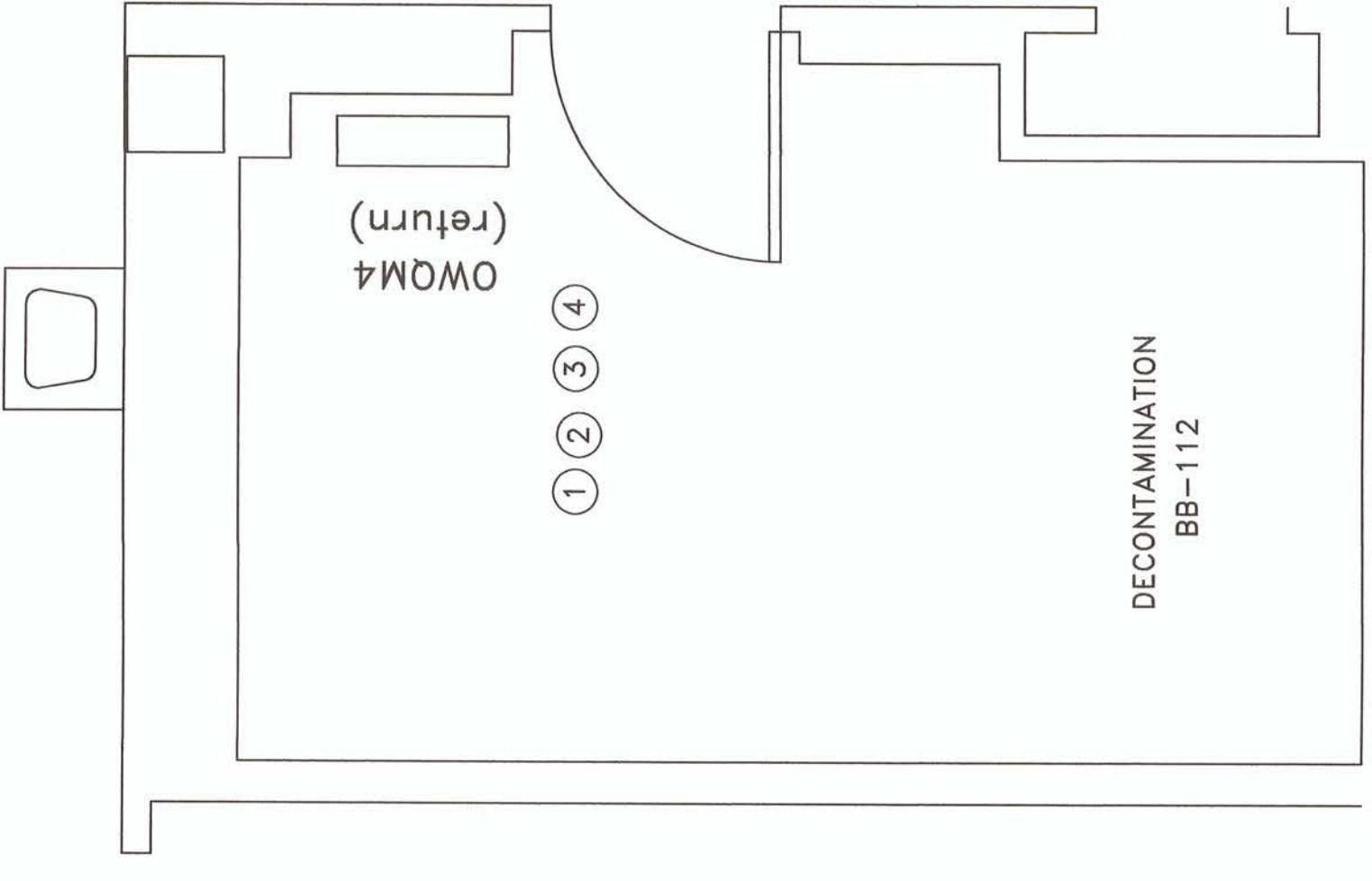
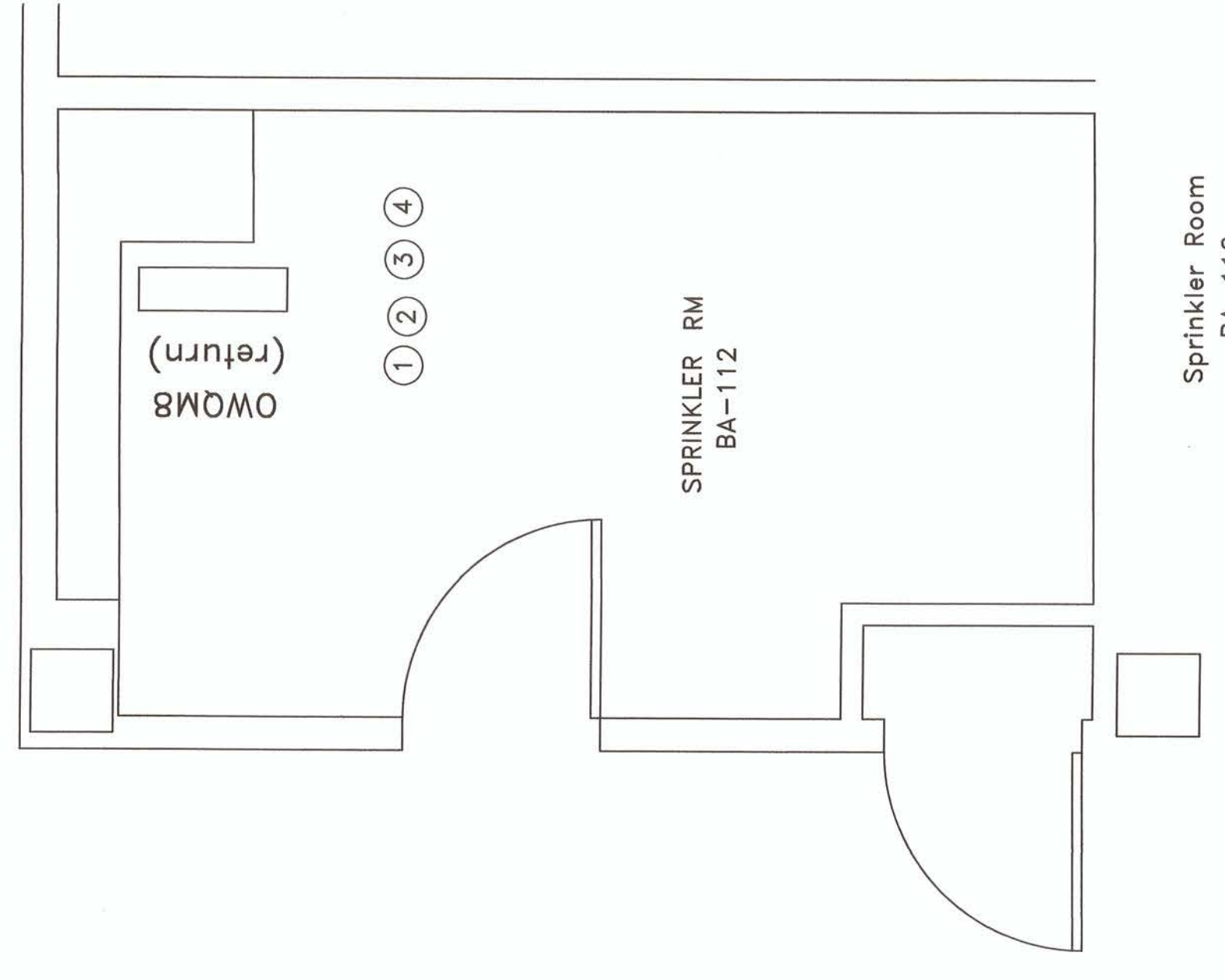
NOT TO SCALE

General Notes :

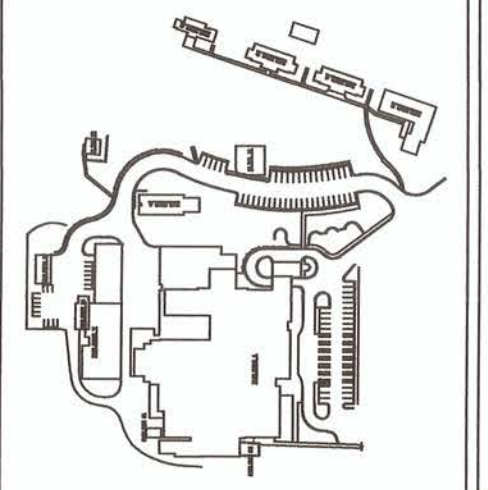
- A. All exposed piping shall be hard drain copper tubing.
- B. If any Asbestos is found, contractor is to stop work and notify COR immediately.

General Notes :

- ① OWOM, see schedule for required sensor.
- ② Connect to domestic water piping where applicable.
- ③ Provide one OWOM flow cell for hot water and a separate flow cell for cold water.
- ④ Location of Monitor to be installed may be adjusted by Contractor with approval from COR.



BASEMENT FLOOR PLAN  
Building 1



|           |  |   |   |   |   |
|-----------|--|---|---|---|---|
| APPROVED: | APPROVED: SAFETY MANAGER<br>JUSTIN GREENE<br>APPROVED: INFECTION CONTROL | APPROVED: CHIEF, FACILITIES MANAGEMENT SERVICE LINE<br>JOHN MONTGOMERY<br>APPROVED: ASSOCIATE DIRECTOR for PATIENT CARE SERVICES/EXECUTIVE NURSE<br>DEBRA LEGG, RN, MSN<br>APPROVED: SERVICE LINE CHIEF | APPROVED: MEDICAL CENTER DIRECTOR<br>STACY J VASQUEZ<br>APPROVED: ASSOCIATE DIRECTOR<br>JOHN D. STOUT<br>APPROVED: CHIEF OF STAFF | DRAWING TITLE:<br>Basement - New Work Continuous Water monitoring System<br>PROJECT TITLE:<br>Correct Water System for Legionella Phase 2 | DRAWING No.<br>M-102<br>PROJECT No.<br>517-17-101<br>DRAWN BY:<br>JPP |
| APPROVED: | APPROVED:  | APPROVED:   | APPROVED:   | DATE<br>8/16/2017   | CHECKED BY:<br>KB, JH   |
| APPROVED: | APPROVED:  | APPROVED:   | APPROVED:   | REV.  | SCALE<br>NTS  |