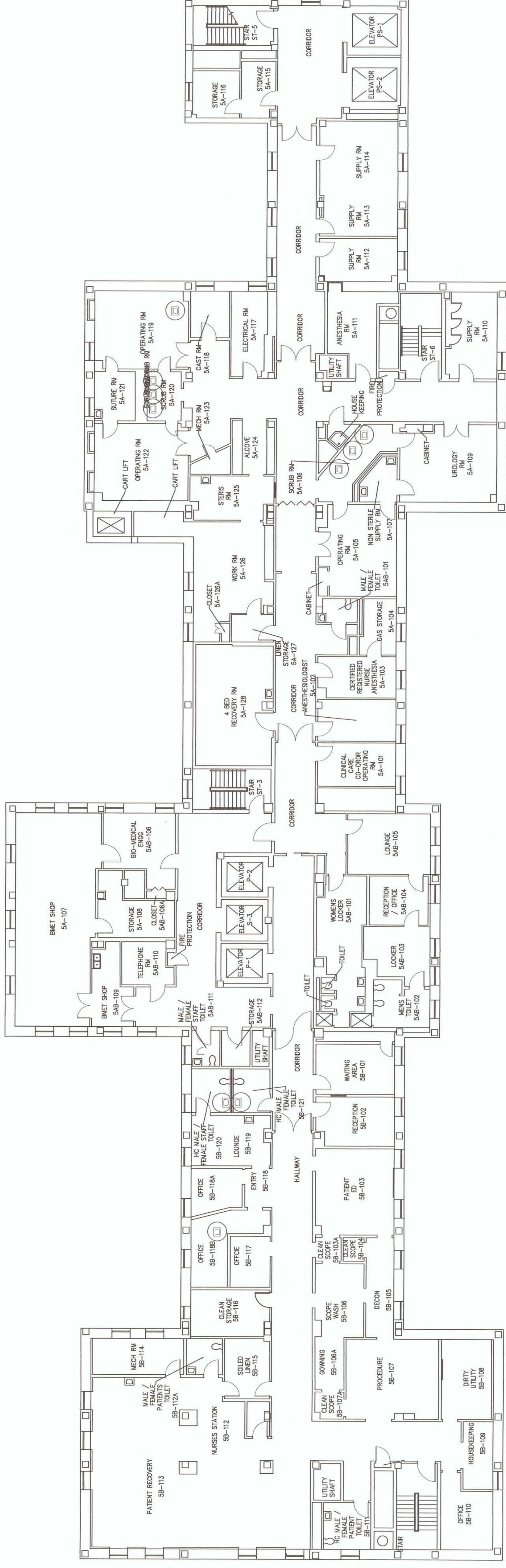


Mixing Valve/Room Schedule		
Room No.	Mixing Valves	Sinks
5A-106	3	1
5A-119	1	1
5A-120	3	1
5B-118B	1	1
5B-120	1	1
5B-121	1	1

* - See Drawing PL-108 for Installation Diagram



FIFTH FLOOR PLAN
Building 1

General Notes :

- All water outages must be scheduled in advance with COR.
- It is the contractors responsibility to repair or replace any property damaged by the contractor during construction.
- Contractor shall supply VA with a schedule.
- It is the Contractors responsibility to verify all Faucet types to determined which type of mixing valve is required.
- Contractor is to verify and supply under this contract type of adapter needed to connect stop to existing supply pipe.
- A two week notice is required for any water shut down.
- All plumbing installation is to be done by licensed certified plumbers.
- If any Asbestos is found, the contractor is to stop work and notify the COR immediately.

Demolition Notes :

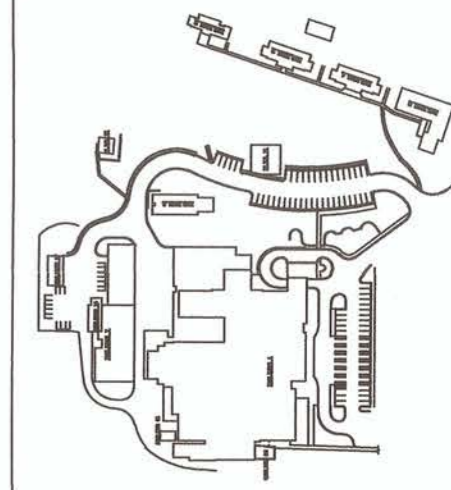
- Any piping, valves, etc demosed shall be recycled in a VA provided contained. See COR for location of recycling container.

New Work Notes :

- Contractor to repair any damage to finishes after valves have been installed. Finishes to match existing.
- Contractor to clean room and advise COR before proceeding to next Room.
- Contractor to install 1 mixing valve and 2 stops to all sinks indicated in mixing valve/room schedule on this sheet.

Legend:

- Ⓢ Sink with new mixing valve and 2 - stops.



APPROVED:	APPROVED: SAFETY MANAGER	APPROVED: CHIEF, FACILITIES MANAGEMENT SERVICE LINE	APPROVED: MEDICAL CENTER DIRECTOR	DRAWING TITLE: Fifth Floor - Mixing Valve Installation Locations	DRAWING No. PL-106
APPROVED:	JUSTIN GREENE APPROVED: INFECTION CONTROL	JOHN MONTGOMERY APPROVED: ASSOCIATE DIRECTOR for PATIENT CARE SERVICES/EXECUTIVE NURSE DEBRA LEGG, RN, MSN APPROVED: SERVICE LINE CHIEF	STACY VASQUEZ APPROVED: ASSOCIATE DIRECTOR	PROJECT No. 517-16-112	PROJECT No. 517-16-112
APPROVED:			JOHN D. STOUT APPROVED: CHIEF OF STAFF	PROJECT TITLE: Legionella Prevention Corrections	DRAWN BY: JPP
			JOHN D. BERRYMAN, M. D.	DATE 8/16/2017	CHECKED BY: KB, JH
				REV.	SCALE NTS

NOT TO SCALE

PUTTING PATTERNS FIRST
Medical Center
200 Veterans Av
Beckley, WV. 25801