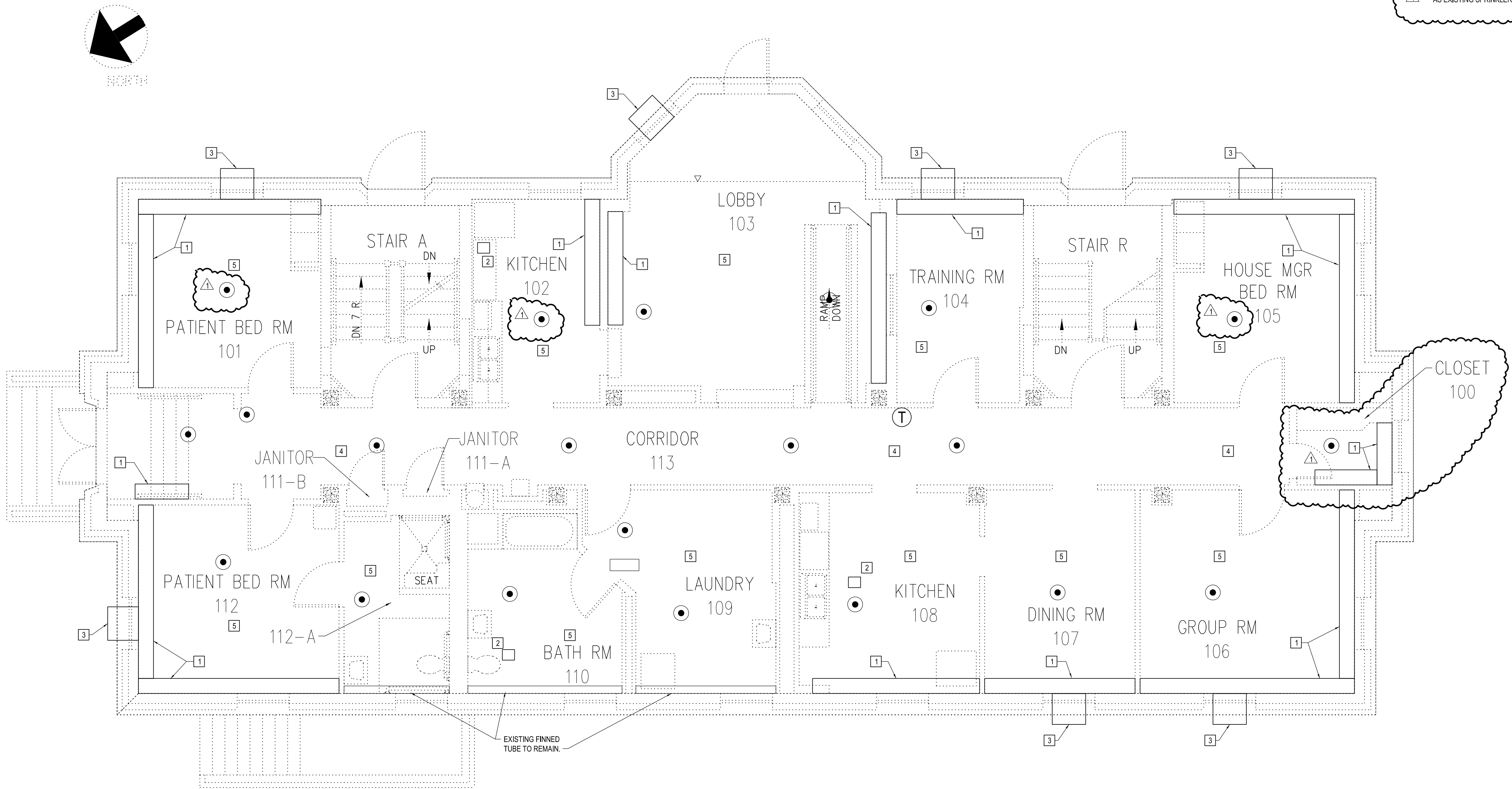


KEYNOTES

- 1 REMOVE EXISTING FINED TUBE. REMOVE ALL ASSOCIATED PIPING BACK TO MAINS OR POINT INDICATED ON DRAWING. PATCH/REPAIR FLOOR TO MATCH EXISTING.
- 2 REMOVE EXISTING EXHAUST FAN. REMOVE ALL ASSOCIATED DUCTWORK AND ACCESSORIES IN THEIR ENTIRETY.
- 3 REMOVE EXISTING WINDOW AC UNIT. REMOVE SUPPORT BRACKET. REPAIR HOLES IN EXTERIOR WALLS FROM BRACKET ANCHORS. REPAIR PAINT SILLS FROM WINDOW AC UNIT. REPAIR/REPLACE WINDOW SASH AND LOCKING MECHANISM.
- 4 REMOVE EXISTING LAY-IN CEILING SYSTEM IN CORRIDOR INCLUDING CEILING TILE, GRID AND APPURTENANCE. REMOVE EXISTING PLASTER CEILING IN THE CORRIDOR IN ITS ENTIRETY TO ALLOW FOR THE INSTALLATION OF NEW MECHANICAL SYSTEMS. ITEMS TO BE SALVAGED AND REINSTALLED SHALL INCLUDE SPEAKERS, SMOKE DETECTORS, EXIT SIGNS AND ANY OTHER ASSOCIATED APPURTENANCES. REMOVE EXISTING SPRINKLERS AND BRANCH PIPING TO POINT FOR RECONNECTION. PROVIDE QUICK RESPONSE SPRINKLER (IN SAME LOCATION) AS EXISTING SPRINKLER THAT NEEDED TO BE REMOVED FOR CONSTRUCTION.
- 5 REMOVE EXISTING LAY-IN CEILING SYSTEM INCLUDING CEILING TILE, GRID AND APPURTENANCE AND/OR REMOVE EXISTING PLASTER CEILING AS REQUIRED TO ALLOW FOR THE INSTALLATION OF NEW MECHANICAL SYSTEMS. ITEMS TO BE SALVAGED AND REINSTALLED SHALL INCLUDE SPEAKERS, SMOKE DETECTORS, EXIT SIGNS AND ANY OTHER ASSOCIATED APPURTENANCES. REMOVE EXISTING SPRINKLERS AND BRANCH PIPING TO POINT FOR RECONNECTION. PROVIDE QUICK RESPONSE SPRINKLER (IN SAME LOCATION) AS EXISTING SPRINKLER THAT NEEDED TO BE REMOVED FOR CONSTRUCTION.



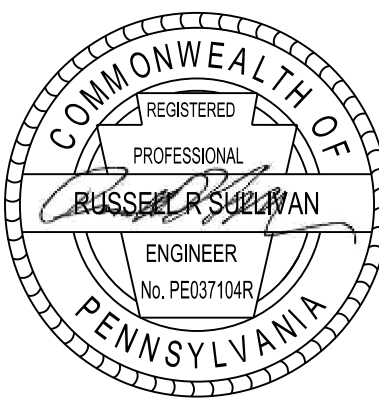
FIRST FLOOR MECHANICAL DEMOLITION PLAN

1/4"=1'-0"

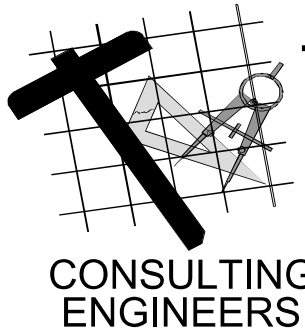
CONSULTANTS:



400 Morgan Center
101 East Diamond Street
Butler, PA 16001
tel: 724.285.4761
fax: 724.285.6815
www.burthill.com



ARCHITECT/ENGINEERS:



TOLMAN ENGINEERING, PLLC
3610 LAWSON ROAD
JAMESTOWN, NEW YORK 14701
PHONE: (716) 484 - 1366
FAX: (716) 484 - 1519

Drawing Title
FIRST FLOOR MECHANICAL
DEMOLITION PLAN

Approved Project Director

Project Title
REPLACE BUILDING EXTERIOR
GAS LINES

Location
BUTLER VAMC

Date
02-17-2012

Checked
FRS

Drawn
JJB

Project Number
529-11-109

Building Number
N/A

Drawing Number

MD-2
Dwg. 41 of 48

Office of
Construction
and Facilities
Management

