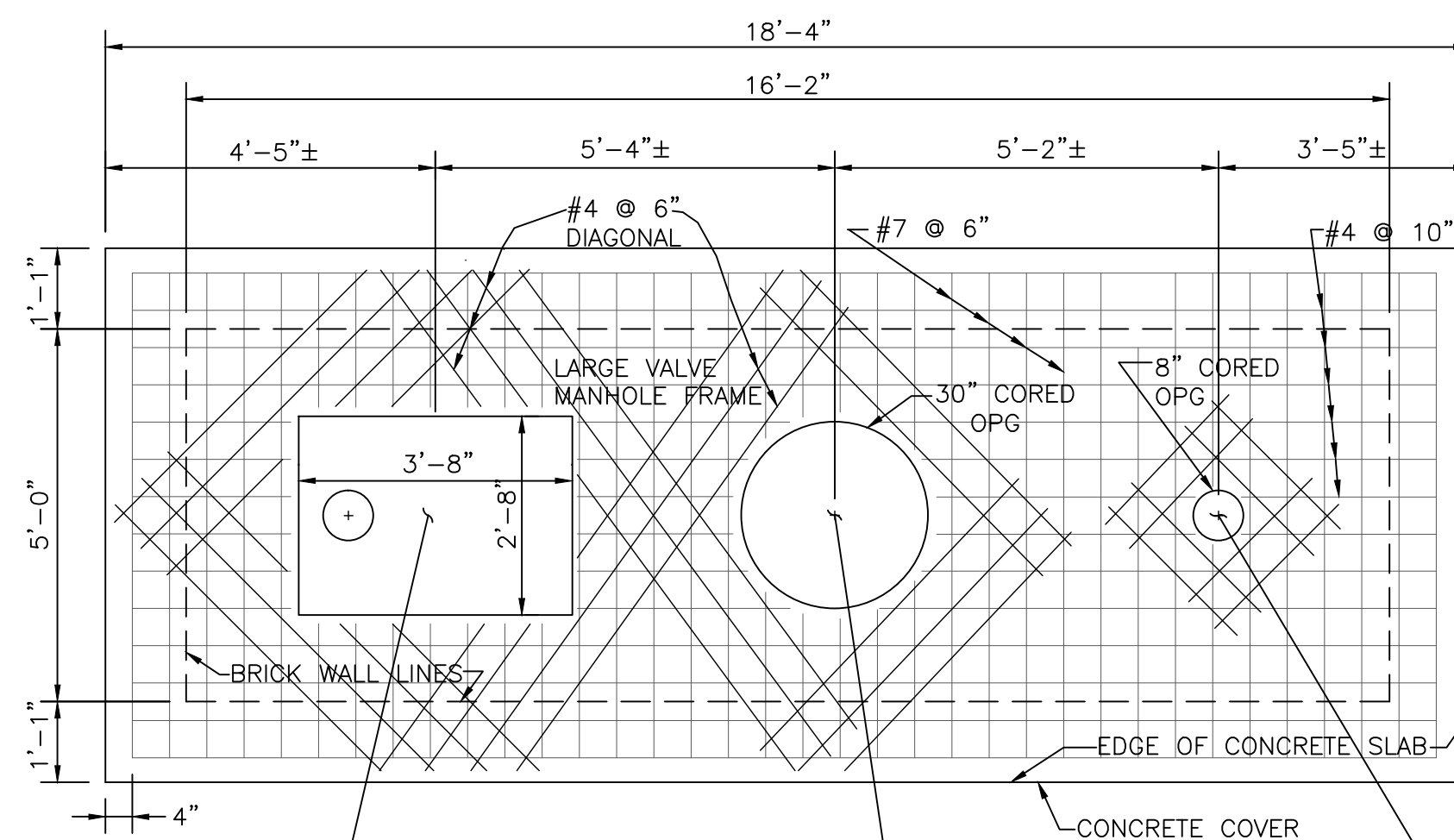
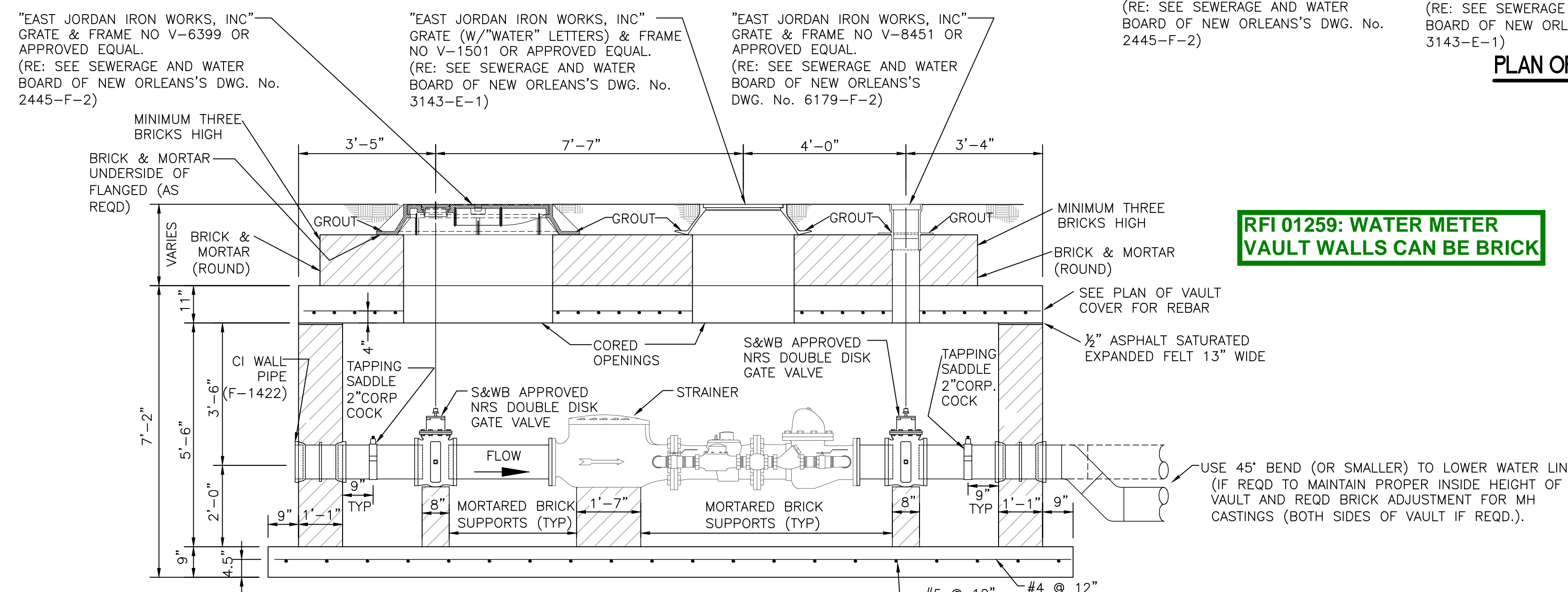


PLAN OF 10' METER VAULT

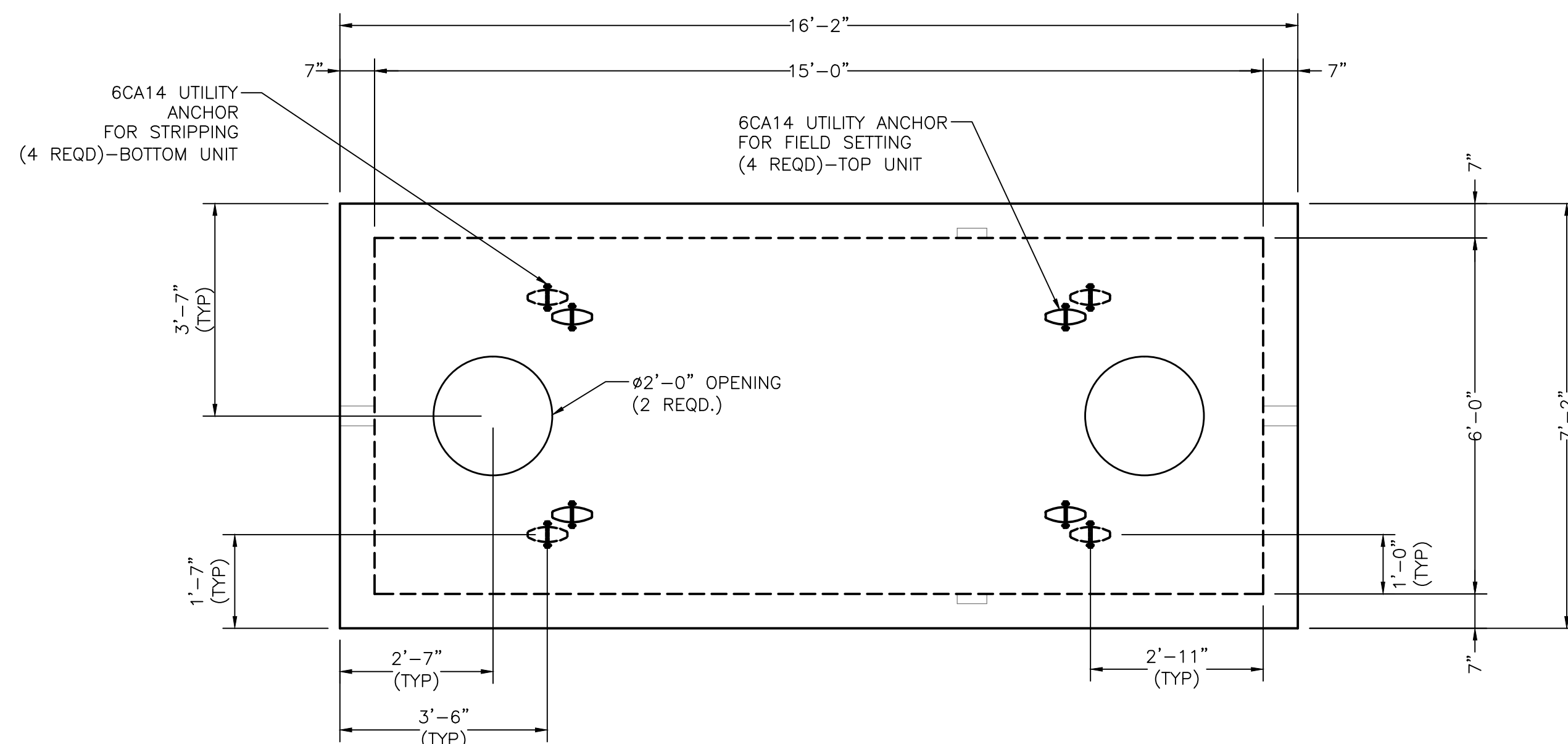


PLAN OF VAULT COVER



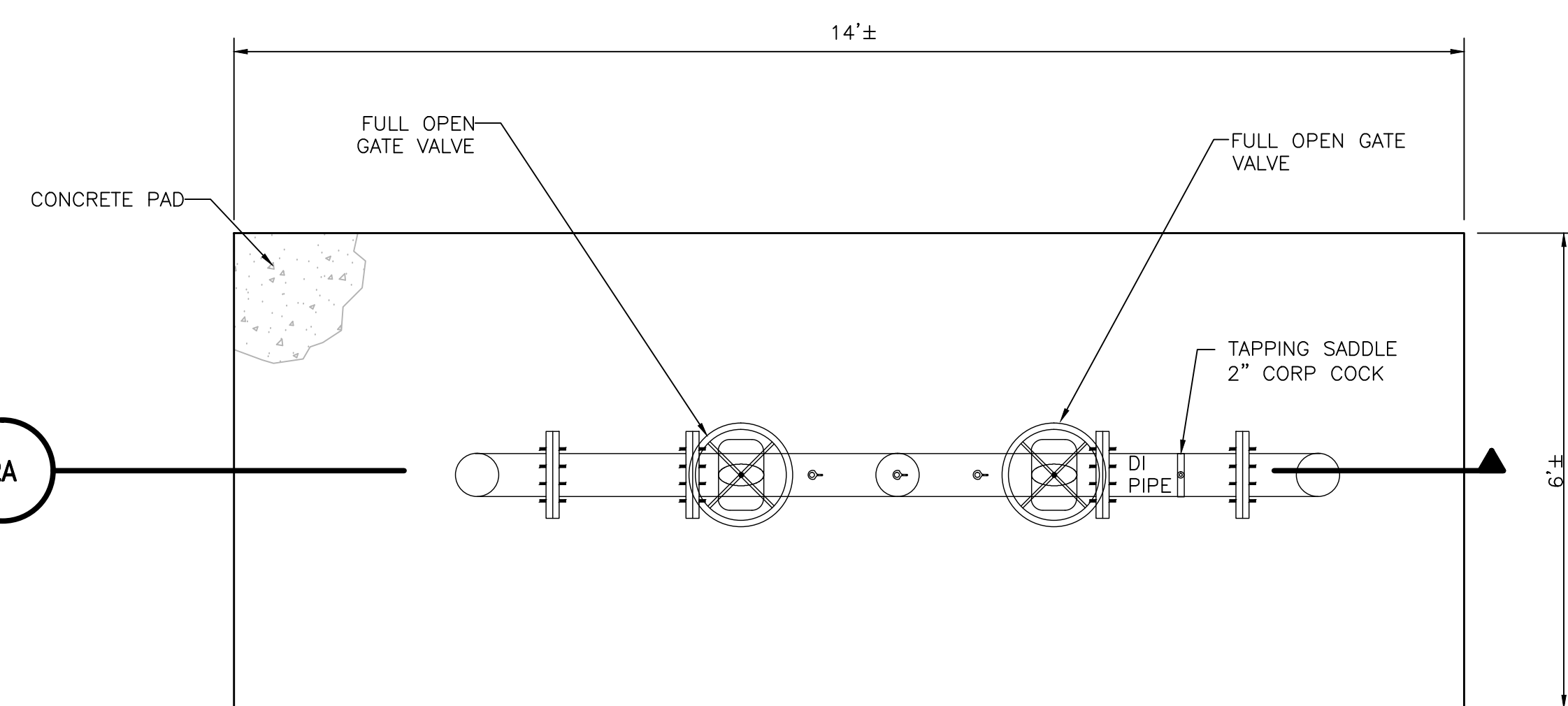
LONGITUDINAL SECTION THRU VAULT

1 10' ROCKWELL DOMESTIC + FIRE SERVICE METER VAULT (S+WB STD DETAIL DWG NO 7531-W4)

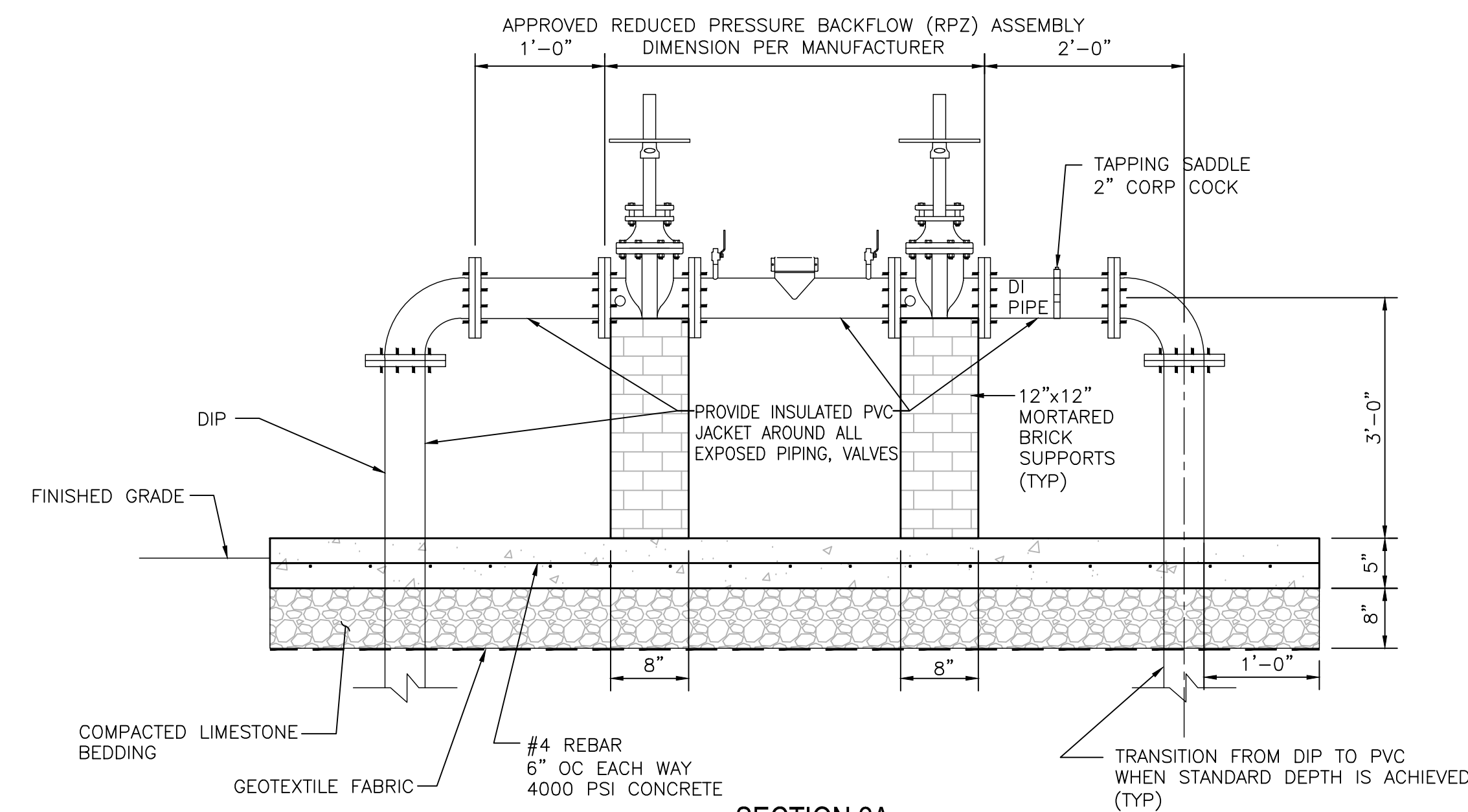


PLAN VIEW

3 4000 GALLON GREASE TRAP

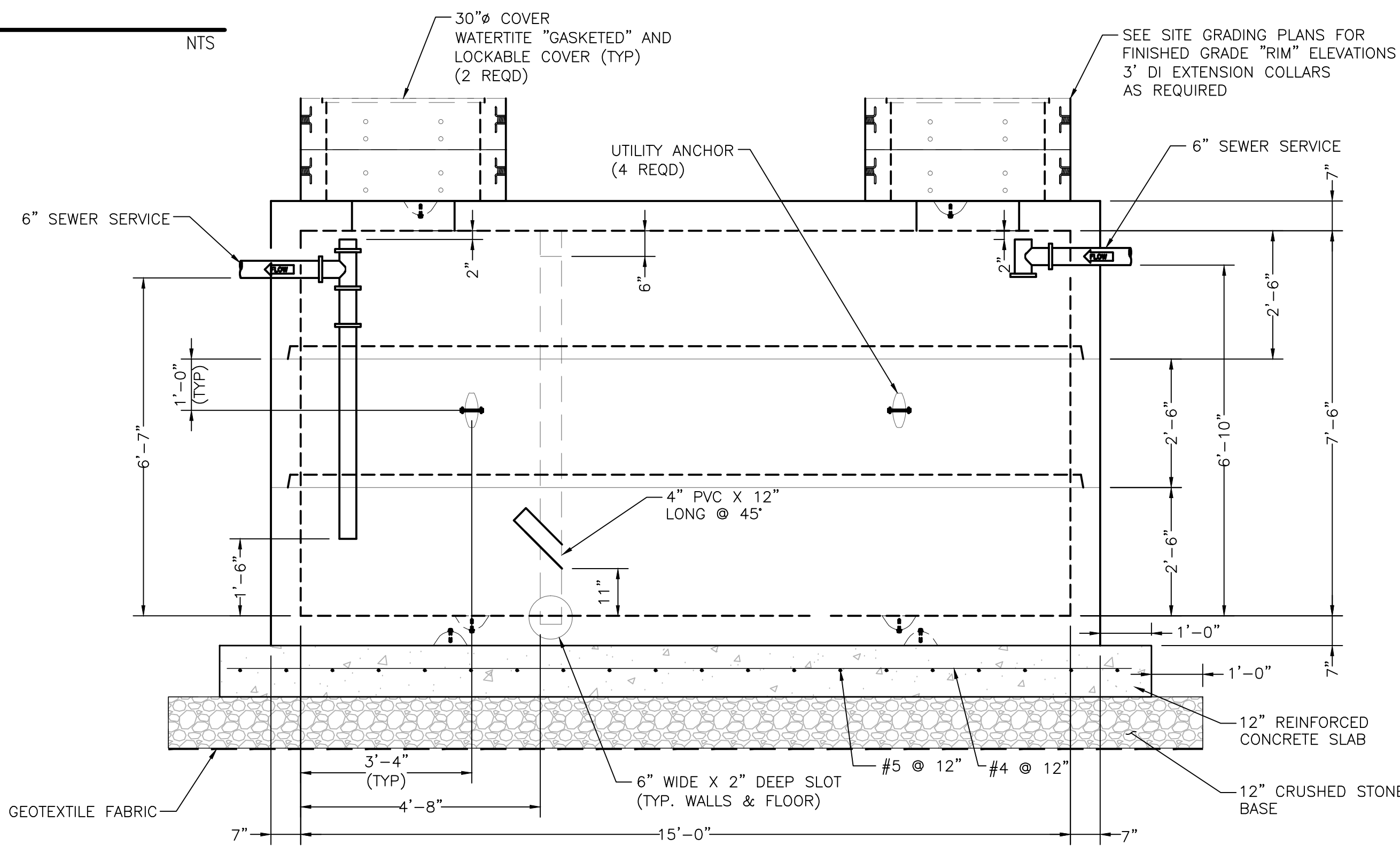


PLAN VIEW



SECTION 2A

2 BACKFLOW PREVENTER



SECTIONAL VIEW

- NOTES:
- DESIGN LOAD:
A. AASHTO HS-20-44, W/ IMPACT.
B. SOIL WEIGHT = 120 PCF.
C. SEE UTILITY PLANS FOR REQUIRED DEPTHS OF SEWER SERVICES.
D. ASSUMED WATER TABLE: 3.0' BELOW FINISH GRADE.
E. EQUIV. FLUID PRESSURE = 40 PCF.
F. 2 FT. LATERAL LIVE LOAD SURCHARGE
 - CONCRETE 28 DAY COMPRESSIVE STRENGTH SHALL BE 5500 PSI (MIN.)
 - STEEL REINFORCEMENT: REBAR, ASTM A-615 GRADE 60
 - CEMENT: ASTM C-150 SPECIFICATIONS
 - GREASE TRAPS SHALL COMPLY WITH THE LOUISIANA STATE PLUMBING CODE 2000 OR LATEST REVISIONS "REFER TO LA PLUMBING CODE DETAIL M104.A".
 - RFI 0486 REMOVES THE UPLIFT CONNECTION REQUIREMENTS
 - DIMENSIONS SHOWN ARE FOR INFORMATIONAL PURPOSES "ONLY". SHOP DRAWINGS SHALL BE SUBMITTED BY THE GREASE TRAP MANUFACTURER PRIOR TO CONSTRUCTION.
 - PROVIDE (2) VENT PIPES ON OPPOSITE SIDES OF THE GREASE TRAP FOR VENTILATION. (ROUTED UNDERGROUND TO D&T BUILDING. SEE UTILITY PLAN FOR LOCATIONS AND ALIGNMENT.)

CONSTRUCTION DOCUMENTS 1
FULLY SPRINKLERED

CONSULTANTS: DESMAN ASSOCIATES / PARKING CODE CONSULTANTS, INC. / CODE CONSULTANT THE SEXTANT GROUP / AV & ACOUSTICAL HAMMER DESIGN ASSOCIATES / FOOD SERVICE PYBURN & ODOM / ABATEMENT TATA & HOWARD/ TANK CONSULTANT		ARCHITECT/ENGINEERS: studio NOVA SCHRENK & PETERSON CONSULTING ENGINEERS / CIVIL KORDA/NEMETH ENGINEERING / STRUCTURAL BR+A CONSULTING ENGINEERS / MECH, ELECT, PLUMBING, LOW VOLTAGE ARCHITECTURAL ENGINEERING / PLUMBING SCALES ASSOCIATES / FIRE PROTECTION		DRAWING TITLE CIVIL DETAILS SCALE: AS SHOWN	PROJECT TITLE SLVHCS REPLACEMENT MEDICAL CENTER PROJECT	PROJECT NUMBER 629-HS2-401	BUILDING NUMBER
REVISIONS:		DATE		APPROVED: PROJECT DIRECTOR <i>John Sandus</i>	LOCATION NEW ORLEANS, LOUISIANA	CHECKED CMJ	DRAWN ML
VA FORM 08-6231						DRAWING NUMBER C1505	
						OFFICE OF CONSTRUCTION AND FACILITIES MANAGEMENT 	