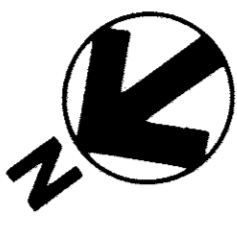
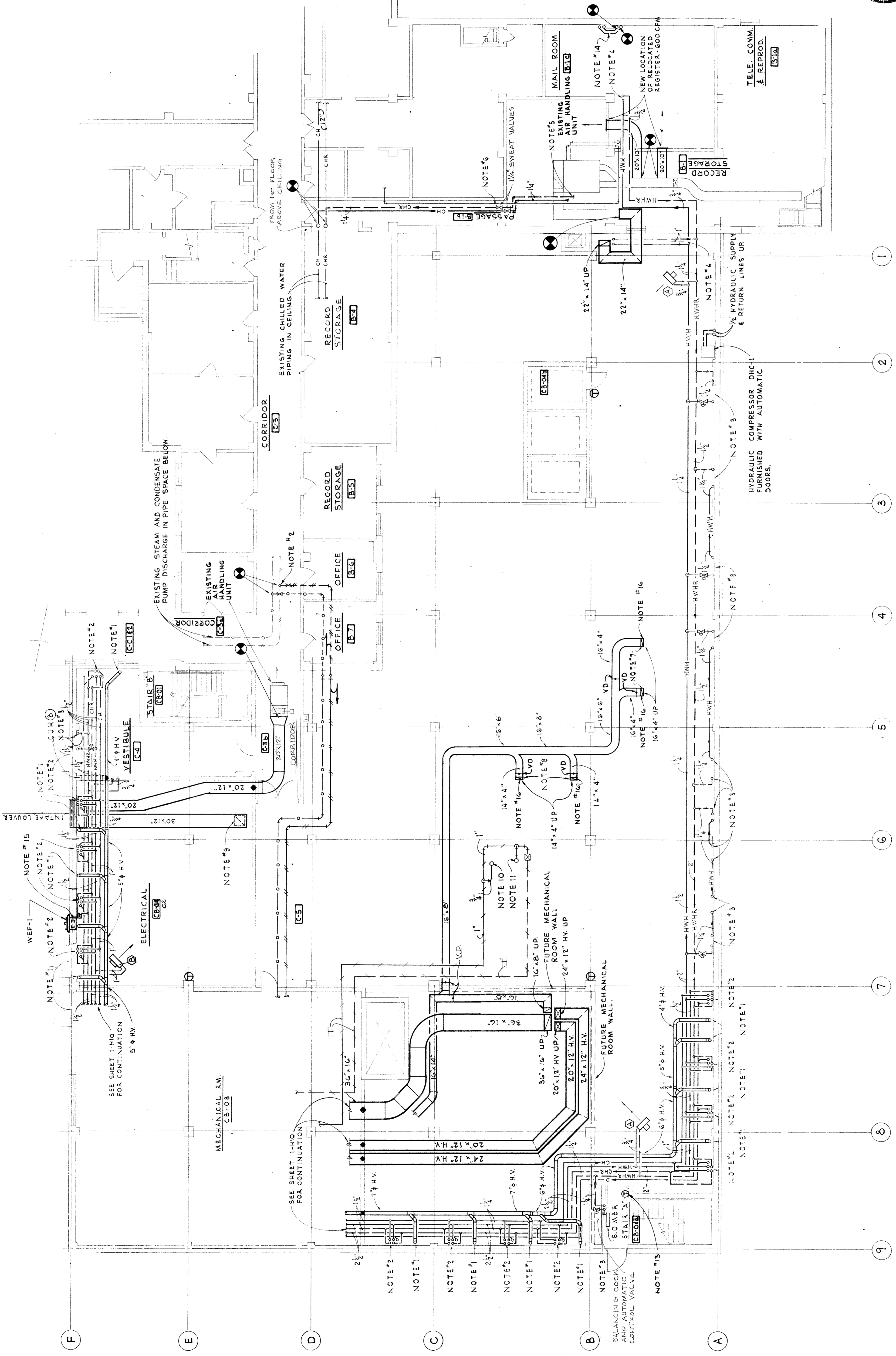


KEY PLAN



SCALE 1/8" = 1'-0"

- NOTES: (THIS SHEET ONLY)
- #1- 4" HV DUCT UP TO INDUCTION UNIT ABOVE.
 - #2- PIPING UP TO INDUCTION UNIT ABOVE.
 - #3- 1" PIPING UP TO FINTUBE RADIATION ABOVE.
 - #4- PIPING UP TO CABINET UNIT HEATER.
 - #5- NEW CHILLED WATER PIPING CONNECT TO EXISTING AIR HANDLING UNIT CONTROL VALVE.
 - #6- EXISTING STEAM PIPING TO AIR HANDLING UNIT.
 - #7- EXHAUST DUCT UP TO WALL GRILLE IN C-104.
 - #8- EXHAUST DUCT UP TO WALL GRILLE IN C-111.
 - #9- 24" x 24" OPENING IN BOTTOM OF DUCT WITH MOTORIZED DAMPER.
 - #10- 1" STEAM UP TO BED PAN SANITIZER VS-534.
 - #11- 1" STEAM UP TO STERILIZER VS-122.
 - #12- NEW CONNECTIONS TO EXISTING LINES IN PIPE SPACE BELOW.
 - #13- THERMOSTAT FOR CONTROL OF STAIR RADIATION ZONE VALVE.
 - #14- OFFSET EXISTING 2" STEAM & VACUUM RETURN RISERS AS SHOWN & EXTEND UP TO FIRST FLOOR.
 - #15- 22" x 22" DUCT CONNECTION TO WEF-1 WITH MOTORIZED DAMPER.
 - #16- PROVIDE FIRE DAMPER IN EXHAUST DUCT WHERE DUCT PASSES THRU FLOOR.
 - #17- THE ZONE CONTROL VALVES SHOWN FOR THE HOT WATER RADIATION ON THE SCHEMATIC DIAGRAM SHC-1-H5 SHALL GOVERN. SIX (6) AUTOMATIC VALVES ARE REQUIRED AND SHALL BE ADDED AT THE CORRESPONDING IN DISCHARGE OF THE ZONE CONTROL VALVES (AMENDMENT NO. 2, ITEM #4). DWG. HHS 4 (176)



1-7-1-1023



SEE SHEET 1-H7
FOR GENERAL
NOTES

SHEET TITLE BASEMENT FLOOR PLAN- MECHANICAL	
PROJECT NO. 1	PROJECT TITLE AMBULATORY CARE ADDITION TO BUILDING NO. 1
DRAWN RBT	CHECKED RHS
DATE 5/14/76	DRAWING NUMBER 1-H8
The Drake Partnership Architects 10425 Olive Street Road St. Louis, Mo. 63141 Comm. No.: 7556 314-432-6464 APPROVED: PROJECT DIRECTOR	
VETERANS ADMINISTRATION	
LOCATION VAH, ST. LOUIS (JCD), MISSOURI	

