

ASBESTOS ABATEMENT

GENERAL CONTRACTOR NOTES

1. PROVIDE SOLID BARRIER WALLS BETWEEN RENOVATION AREAS AND OCCUPIED AREAS AS REQUIRED.
2. REMOVE ALL MOVABLE OBJECTS WITHIN SCHEDULED ABATEMENT AREAS PRIOR TO COMMENCEMENT OF ABATEMENT ACTIVITIES.
3. PROVIDE TEMPORARY HOSE CONNECTIONS, APPROPRIATE DRAIN CONNECTIONS AND ELECTRICAL PANEL FOR ABATEMENT CONTRACTOR, (ENSURE PANEL IS CONNECTED TO EMERGENCY GENERATOR.)

ABATEMENT CONTRACTOR NOTES

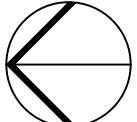
1. COORDINATE LOCKOUT/TAGOUT OF AIR HANDLING UNITS AND EXHAUST FANS WITH THE VA AND MECHANICAL CONTRACTOR PRIOR TO CONDUCTING ABATEMENT ACTIVITIES. IF LOCKOUT/TAGOUT OF THE HVAC SYSTEM IS NOT POSSIBLE, SEAL ALL INTAKE AND EXHAUST VENTS IN THE REGULATED AREA WITH DUCT TAPE AND LAYERS OF 6-MIL POLY OR REMOVE DIFFUSERS AND CAP SUPPLY AND RETURN DUCTS. SEAL ANY SEAMS IN HVAC SYSTEM COMPONENTS THAT PASS THROUGH THE REGULATED AREA.
2. ALL TEMPORARY WATER SERVICE CONNECTIONS MUST INCLUDE A BACKFLOW PREVENTER, BE COORDINATED WITH GENERAL CONTRACTOR AND MET WITH VA APPROVAL.
3. CONTRACTOR WILL ABATE ALL ACM IN SPECIFIED AREAS IN ACCORDANCE WITH SPECIFICATION SECTIONS 02-82-13.13 AND 02-82-13.19.



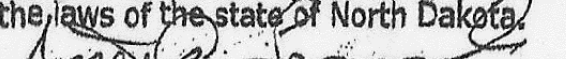
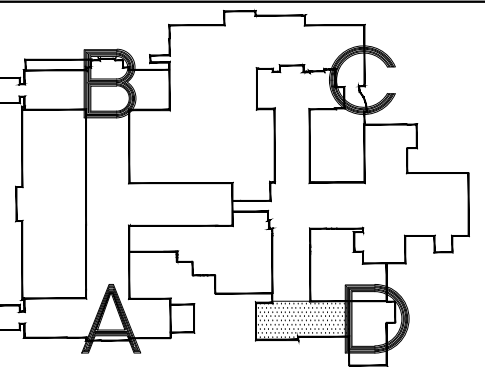
ASBESTOS CONTAINING MATERIAL

- 1 PIPE INSULATION 40 LINEAL FEET
2 12" FLOOR TILE AND MASTIC 160 SQUARE FEET



FIRST FLOOR ASBESTOS ABATEMENT PLAN
1/8"=1'-0"



<div><div>Dept. of Veterans Affairs Medical Center 2101 Elm Street North Fargo, ND 58102</div></div>	<div><div>IMAGE GROUP INC. 403 CENTER AVENUE, SUITE 300 MOORHEAD, MN 56560</div></div>	<div>IMAGE GROUP INC., Architecture & Interiors SOLEN & LARSON ENGINEERING, Structural Engineers OBERMILLER NELSON ENGINEERING, Mechanical Engineers MEN ENGINEERS, Electrical Engineers TRIO ENVIRONMENTAL, Environmental Consultants</div>	<div>I hereby certify that this plan specification, or report was prepared by me or under my direct supervision, and that I am duly Certified Asbestos Abatement Project Designer under the laws of the state of North Dakota.  Date 11/1/2011 Cert. No. 259</div>	<div><div>KEY PLAN</div></div>	<div>Drawing Title FIRST FLOOR ASBESTOS ABATEMENT PLAN</div>	<div>Project Title VA MEDICAL CENTER CLC EXPANSION AND REMODELING</div>	<div>Date NOVEMBER 1, 2011</div>	<div>Department of Veterans Affairs</div>			
					<div>VA Project No. 437-311</div>	<div>Contract No. VA263-P-0968 VA263-C-</div>	<div>Designed By RM</div>		<div>Checked By RM</div>	<div>Drawn By KS</div>	<div>Drawing No. AB1</div>
					<div>Building No. 1</div>	<div>AutoCAD File Name FIRST_ASBESTOS</div>	<div>Location VA MEDICAL CENTER FARGO, ND</div>		<div>Dwg. 45 of 136</div>		

1. PROVIDE SOLID BARRIER WALLS BETWEEN RENOVATION AREAS AND OCCUPIED AREAS AS REQUIRED.
2. REMOVE ALL MOVABLE OBJECTS WITHIN SCHEDULED ABATEMENT AREAS PRIOR TO COMMENCEMENT OF ABATEMENT ACTIVITIES.
3. PROVIDE TEMPORARY HOSE CONNECTIONS, APPROPRIATE DRAIN CONNECTIONS AND ELECTRICAL PANEL FOR ABATEMENT CONTRACTOR, (ENSURE PANEL IS CONNECTED TO EMERGENCY GENERATOR.)

1. COORDINATE LOCKOUT/TAGOUT OF AIR HANDLING UNITS AND EXHAUST FANS WITH THE VA AND MECHANICAL CONTRACTOR PRIOR TO CONDUCTING ABATEMENT ACTIVITIES. IF LOCKOUT/TAGOUT OF THE HVAC SYSTEM IS NOT POSSIBLE, SEAL ALL INTAKE AND EXHAUST VENTS IN THE REGULATED AREA WITH DUCT TAPE AND LAYERS OF 6-MIL POLY OR REMOVE DIFFUSERS AND CAP SUPPLY AND RETURN DUCTS. SEAL ANY SEAMS IN HVAC SYSTEM COMPONENTS THAT PASS THROUGH THE REGULATED AREA.
2. ALL TEMPORARY WATER SERVICE CONNECTIONS MUST INCLUDE A BACKFLOW PREVENTER, BE COORDINATED WITH GENERAL CONTRACTOR AND MET WITH VA APPROVAL.
3. CONTRACTOR WILL ABATE ALL ACM IN SPECIFIED AREAS IN ACCORDANCE WITH SPECIFICATION SECTIONS 02-82-11, 02-82-13.13 & 02-82-13.19.

1	PIPE INSULATION	80 LINEAL FEET
3	FLOOR TILE OVER 2ND LAYER FLOORING	181 SQUARE FEET
6	GLUE PUCKS (RESIDUAL)	26 SQUARE FEET

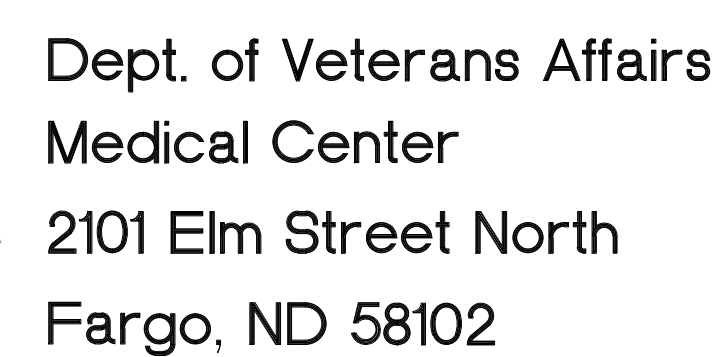
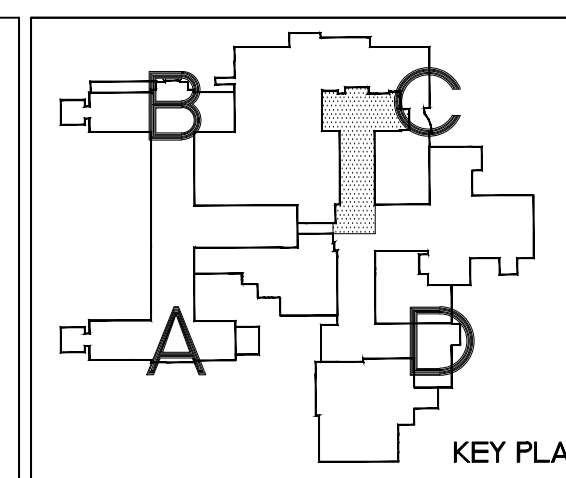
[illegible]


IMAGE GROUP INC., Architecture & Interiors
SOLLEN & LARSON ENGINEERING, Structural Engineers
OBERMILLER NELSON ENGINEERING, Mechanical Engineers
MBN ENGINEERS, Electrical Engineers
TRIO ENVIRONMENTAL, Environmental Consultants

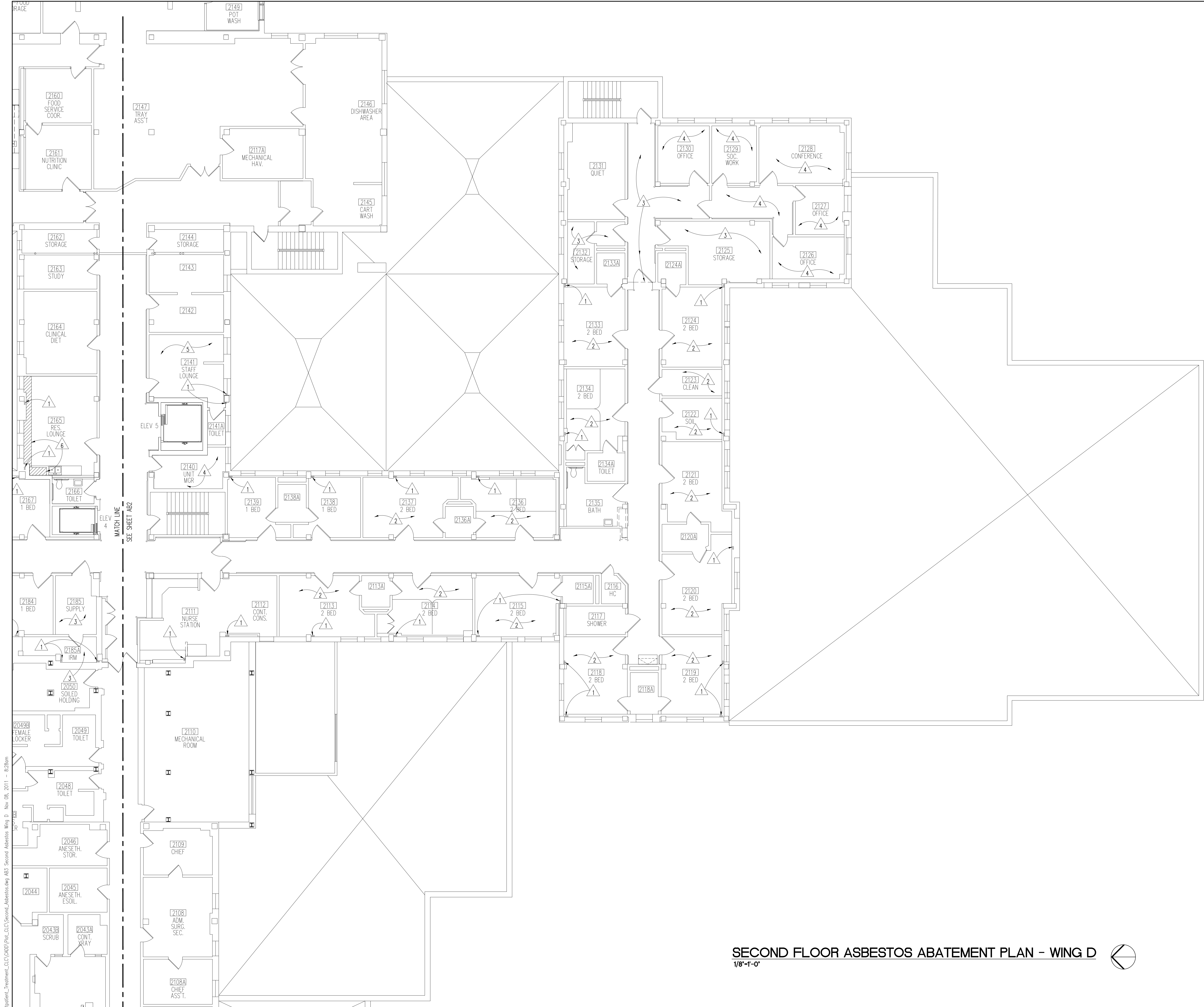
I hereby certify that this plan specification, or report was prepared by me or under my direct supervision, and that I am duly Certified Asbestos Abatement Project Designer under the laws of the state of North Dakota.

Robert P. Jones

Date 11/1/2011 Cert. No. 259



Drawing Title SECOND FLOOR ASBESTOS ABATEMENT PLAN - WING C		Project Title VA MEDICAL CENTER CLC EXPANSION AND REMODELING		Date NOVEMBER 1, 2011	 Department of Veterans Affairs
VA Project No. 437-311		Contract No. VA263-P-0968 VA263-C-		AS SHOWN	
Designed By RM		Checked By RM		Drawn By KS	
Building No. 1		AutocAD File Name SECOND_ASBESTOS		Location VA MEDICAL CENTER FARGO, ND	
Dwg. 46 of 136					



ASBESTOS ABATEMENT - WING 'D'

GENERAL CONTRACTOR NOTES

1. PROVIDE SOLID BARRIER WALLS BETWEEN RENOVATION AREAS AND OCCUPIED AREAS AS REQUIRED.
2. REMOVE ALL MOVABLE OBJECTS WITHIN SCHEDULED ABATEMENT AREAS PRIOR TO COMMENCEMENT OF ABATEMENT ACTIVITIES.
3. PROVIDE TEMPORARY HOSE CONNECTIONS, APPROPRIATE DRAIN CONNECTIONS AND ELECTRICAL PANEL FOR ABATEMENT CONTRACTOR, (ENSURE PANEL IS CONNECTED TO EMERGENCY GENERATOR.)

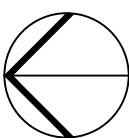
ABATEMENT CONTRACTOR NOTES

1. COORDINATE LOCKOUT/TAGOUT OF AIR HANDLING UNITS AND EXHAUST FANS WITH THE VA AND MECHANICAL CONTRACTOR PRIOR TO CONDUCTING ABATEMENT ACTIVITIES. IF LOCKOUT/TAGOUT OF THE HVAC SYSTEM IS NOT POSSIBLE, SEAL ALL INTAKE AND EXHAUST VENTS IN THE REGULATED AREA WITH DUCT TAPE AND LAYERS OF 6-MIL POLY OR REMOVE DIFFUSERS AND CAP SUPPLY AND RETURN DUCTS. SEAL ANY SEAMS IN HVAC SYSTEM COMPONENTS THAT PASS THROUGH THE REGULATED AREA.
2. ALL TEMPORARY WATER SERVICE CONNECTIONS MUST INCLUDE A BACKFLOW PREVENTER, BE COORDINATED WITH GENERAL CONTRACTOR AND MET WITH VA APPROVAL.
3. CONTRACTOR WILL ABATE ALL ACM IN SPECIFIED AREAS IN ACCORDANCE WITH SPECIFICATION SECTIONS 02-82-13.13 & 02-82-13.19.

ASBESTOS CONTAINING MATERIAL

1	PIPE INSULATION	400 LINEAL FEET
2	2ND LAYER FLOOR TILE/MASTIC	2,902 SQUARE FEET
3	FLOOR TILE OVER 2ND LAYER FLOORING	631 SQUARE FEET
4	CARPET OVER 2ND LAYER FLOORING	939 SQUARE FEET
5	MASTIC FOR 12" FLOOR TILE	208 SQUARE FEET

SECOND FLOOR ASBESTOS ABATEMENT PLAN - WING D
1/8"=1'-0"



I:\Server\Project Data\1012_Wing_D_Bldg_1_Output\Patient_Treatment_CLC\2400\Plot_C\02Second Asbestos Wing D Nov 08, 2011 - 8:28am



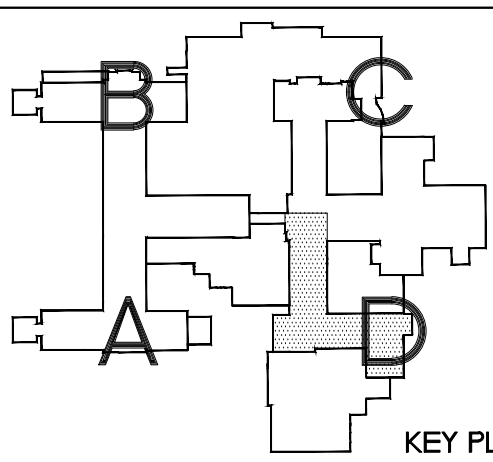
Dept. of Veterans Affairs
Medical Center
2101 Elm Street North
Fargo, ND 58102



IMAGE GROUP INC.
403 CENTER AVENUE, SUITE 300
MOORHEAD, MN 56560

IMAGE GROUP INC., Architecture & Interiors
SOLEN & LARSON ENGINEERING, Structural Engineers
OBERMILLER NELSON ENGINEERING, Mechanical Engineers
MEN ENGINEERS, Electrical Engineers
TRIO ENVIRONMENTAL, Environmental Consultants

I hereby certify that this plan specification, or report was prepared by me or under my direct supervision, and that I am duly Certified Asbestos Abatement Project Designer under the laws of the state of North Dakota.
[Signature]
Date 11/1/2011 Cert. No. 259



Drawing Title SECOND FLOOR ASBESTOS ABATEMENT PLAN - WING D	
VA Project No. 437-311	Contract No. VA263-P-0968 VA263-C-
Building No. 1	AutoCAD File Name SECOND_ASBESTOS

Project Title VA MEDICAL CENTER CLC EXPANSION AND REMODELING		
Designed By RM	Checked By RM	Drawn By KS
Location VA MEDICAL CENTER FARGO, ND		

Date NOVEMBER 1, 2011
AS SHOWN
Drawing No. AB3
Dwg. 47 of 136

