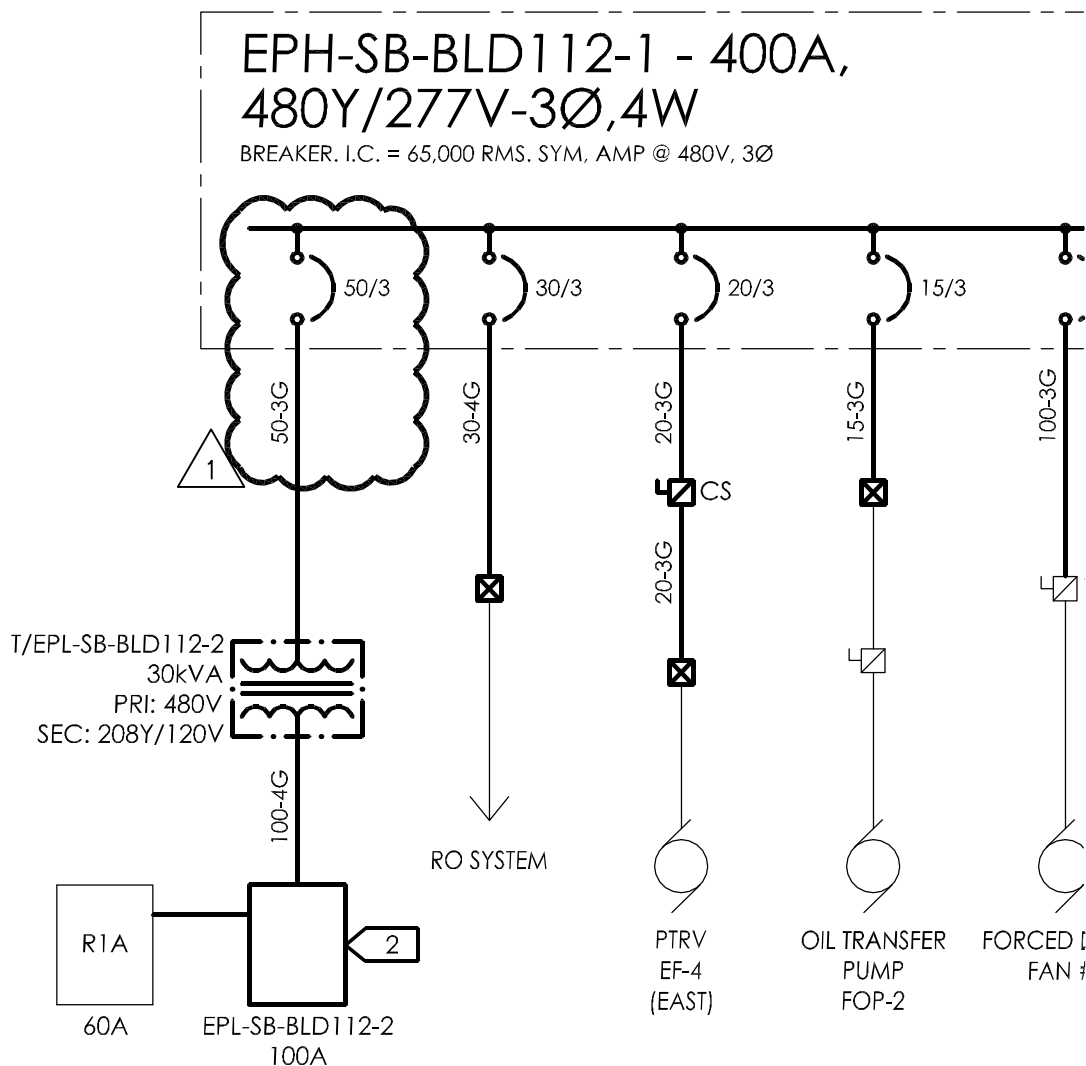


ADDENDUM NOTE:

CHANGES MADE TO SHEET E706 AS
PART OF ADDENDUM 01 SHALL BE
REFLECTED ON ALL SHEETS E701 - E705.

NOTE:
EXISTING MCC-B LOADS SHALL
BE FED FROM THIS PANEL



ISSUED BY: G+L



Dept. of Veterans Affairs
Medical Center
5000 W. National Avenue
Milwaukee, WI

Issued For: Addendum No. 01
Reference Drawing No: E706
Scale: NO SCALE
Issue Date: 19 July 2012



CHEQUAMEGON BAY
ENGINEERING, INC.

© CBE 2002-2011

ASHLAND, WI
211 6TH STREET WEST
ASHLAND, WI 54806
PHONE: (715) 602-6004
FAX: (715) 602-6025
MILWAUKEE, WI
933 N. MAYFAIR RD.,
SUITE 109
MILWAUKEE, WI 53228
PHONE: (414) 258-6004
FAX: (414) 258-6154

Project Name: 112 Replace Generator

Project No.: 695-12-117