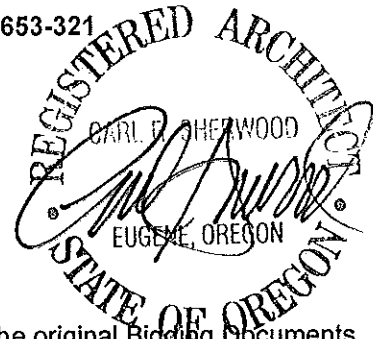


VA Roseburg - Community Living Center Expansion – Project No: 653-321
913 NW Garden Valley Boulevard
Roseburg, OR 97471

Robertson/Sherwood/Architects pc
132 East Broadway - Suite 540
Eugene, Oregon 97401



ADDENDUM NO. 1

This Addendum forms a part of the Contract Documents and modifies the original Bidding Documents (Conformed Set) dated March 15, 2012 as noted below. Acknowledge receipt of this Addendum in the space provided on the Bid Form. Failure to do so may subject the Bidder to disqualification.

P R O J E C T M A N U A L

1. SECTION 01 00 00 – GENERAL REQUIREMENTS

- A. Article 1.2, Paragraph C: Change sentence 2 to read as follows:

"2. Alternate Bid Item: Provide two pairs of side hinged metal clad wood doors with adjacent composite windows for both units, as shown on Drawings."

2. SECTION 01 32 16.13 – NETWORK ANALYSIS SCHEDULES

- A. Article 1.9, Paragraph A: Change frequency of job site progress meetings from "Monthly" to every other week.

3. SECTION 03 45 00 – PRECAST ARCHITECTURAL CONCRETE

- A. Article 2.1, Paragraph A: Change Sentence 1 as follows:

"1. Dimensions: as indicated on drawings."

4. SECTION 04 20 00 – UNIT MASONRY

- A. Article 1.6, Paragraph B: Add the following:

"C90-11 Load-bearing Concrete Masonry Units"

- B. Article 2.1: Change Paragraph C to read as follows:

"C. Jamb and Corner Units; size and shape as shown on Drawings."

- C. Article 2.2: Add Paragraph B:

"B. Steel Reinforcing Bars: ASTM A615M."

- D. Article 2.4: Add Paragraph E as follows:

"E. Full-height air space maintenance and cavity drainage mat.

1. Fluid conducting, non-absorbent, mold and mildew resistant polymer mesh consisting of 100% recycled plastic with binder
2. Non-woven textile product in random pattern and voids no greater than 6.4 mm (¼ inch) diameter.

3. Mat thickness shall be 25 mm (1 inch) and allow no more than 9.5 mm (3/8 inch) tolerance between the masonry mat and masonry wythe.
4. Roll size 406.4 x 2438.4 mm (16 x 96 inches) and/or 203.2 x 2438.4 mm (8x96 inches)."

E. Add Article 2.5 as follows:

"2.5 CONCRETE MASONRY UNITS

- A. Hollow and Solid Load-Bearing Concrete Masonry Units: ASTM C90.
 1. Unit Weight: Normal weight.
 2. Size: Nominal 300 mm x 300 mm x 200 mm (12 inches x 12 inches x 8 inches)."

F. Add Article 3.9 as follows:

"3.9 INSTALLATION OF CONCRETE UNIT MASONRY

- A. Do not wet concrete masonry units (CMU).
- B. Lay CMU units with full-face shell mortar beds. Maintain head and bed joint widths shown, or if not shown, provide 10 mm (3/8 inch) joints.
- C. Where solid CMU units are shown, lay with full mortar head and bed joints.
- E. Use CMU units of the size, shape and number of vertical core spaces shown.
- F. Grouting:
 1. Use "Fine Grout" per ASTM C476 for filling spaces less than 100 mm (4 inches) in one or both horizontal directions.
 2. Use "Coarse Grout" per ASTM C476 for filling 100 mm (4 inch) spaces or larger in both horizontal directions.
 3. Grouting Technique: At the Contractor's option, use either low-lift or high-lift grouting techniques subject to requirements of the Masonry Standards Joint Committee Specifications for Masonry Structures."

5. SECTION 06 40 00 – ARCHITECTURAL WOOD CASEWORK

A. Article 2.1, Paragraph B: Change sentence 3 as follows:

"3. Concealed Surfaces: Resin impregnated decorative paper thermally fused to particle board."

B. Article 2.9: Add Paragraph D as follows:

"D. Simulated Stone Countertops with sinks and over dishwashers: Plywood substrate covered with HPDL, conventionally fabricated."

C. Article 2.14, Paragraph B: Change Sentence 2 as follows:

"2. Provide interchangeable lock cores, keyed per VA standards, for all casework doors/drawers with locks."

6. SECTION 07 46 13 – FIBER CEMENT SIDING

A. Article 2.2: Change Paragraph C as follows:

"C. Insect Screen: Galvanized aluminum wire mesh, continuous vent as dimensioned on Drawings, black color."

7. SECTION 08 14 00 – WOOD DOORS

A. Article 2.1, Paragraph G: Change Sentence 3 as follows:

"3. Accessories:

- a. Frame Gaskets: As scheduled
- b. Automatic Door Bottom Seal: As scheduled"

B. Article 2.2: Change Paragraph B as follows:

"B. For transparent finishes: Premium Grade Rotary cut, cherry."

C. Article 2.2: Add Paragraph F as follows:

"F. Reference Article 2.1 for fire-rated door and sound-rated door requirements."

8. SECTION 08 54 00 – COMPOSITE WINDOWS

A. Article 1.1, Paragraph A: Add Sentence 3 as follows:

"3. Casement Windows"

B. Article 2.1: Add Paragraph C as follows:

"C. Limit opening of window to prevent passage of 200mm (8 inch) diameter sphere."

9. SECTION 08 62 00 – UNIT SKYLIGHTS

Article 2.1, Paragraph A, Sentence 2, Item d: Delete reference to "manual chain operator."

10. SECTION 08 71 00 – DOOR HARDWARE

A. Article 2.2:

1. Delete Paragraph B.

2. Paragraph C:

a. Change Sentence 1 as follows:

"1. Sliding Bi-Parting Pocket Door Hardware: Provide complete sets consisting of track, hangers, stops, bumpers, floor channel, guides, and accessories indicated.

b. Change Sentence 3 as follows:

"3. Top Hung Sliding Barn Door System for doors weighting up to 250lbs: Provide complete sets consisting of track, finish end plates, hangers, stops, bumpers, floor channel guides, and accessories indicated."

B. Article 3.8:

1. Paragraph C: Add Sentence 13 as follows:
"13. HA – Hafele"
2. Hardware Schedule, Set 6.0:
 - a. Delete door numbers A126B.1 & B126B.1.
 - b. Add the following hardware component:
1 / Full Mortise Automatic Door Bottom Seal / PK-411 / NBL / PE
3. Hardware Schedule, Set 17.0: Change "1 Sliding Door Hdwe" to read:
1 Sliding Door Hdwe HAWA-Junior 120/B HA

11. SECTION 09 06 00 – SCHEDULE FOR FINISHES

- A. Article 2.5 DIVISION 06 – WOOD, PLASTICS, AND COMPOSITES, Paragraph A: Add 3 as follows:

3. RESIN IMPREGNATED DECORATIVE PAPER THERMALLY FUSED TO PARTICLE BOARD			
Finish Code	Manufacturer	Finish	Mfg. Color Name/No.
MDL-1	Dantum	Factory	Hardrock Maple M10, L10
MDL-2	Dantum	Factory	TBD

- B. Article 2.8, Paragraph D – RESILIENT BASE AND ACCESSORIES:
- a. Change Finish Code prefix for all items listed from "B" to read "PRB"- #
 - b. Remove "Wall Art" located under column MFG Name/No. for PRB-1 through PRB-5
 - c. Add the following:
"RB-1 (Finish Code) / 08 Icicle (Color Name/No.) / Johnsonite (Manufacturer) / Traditional Wall Base (Mfg Name/No)"

"RB-2 (Finish Code) / 029 Moonrock (Color Name/No.) / Johnsonite (Manufacturer) / Traditional Wall Base (Mfg Name/No)"
- C. Article 2.8, Paragraph F – PAINT AND COATINGS: Change MPI Gloss Level for P-9 and P-11 to read "3/5".

12. SECTION 09 30 13 – CERAMIC/PORCELAIN TILING

- A. Article 1.5, Paragraph C: Add the following:
"C1325-11 Non-Asbestos Fiber-Mat Reinforced Cement Interior Substrate Sheets"
- B. Article 2.1:
 - a. Paragraph B: Change part 2 as follows:

"2. Size and Shape: Mosaic, nominal 50 x 50 mm (2 x 2 inch) formatted in 304.8 x 304.8 mm (12 x 12 inch) sheets."

b. Paragraph E, Part 5: Add Sentence i as follows:

"i. Provide quarter round trim shapes above glass tile border where no tile above."

:

C. Article 2.2: Change Paragraph B as follows:

"B. Cementitious Fiber-Mat Reinforced Sheathing: ASTM C 1325, ANSI A118.9, cementitious backer."

13. SECTION 09 51 00 – ACOUSTICAL CEILINGS

A. Article 2.10, Paragraph D: Change 4 as follows:

"4. CP-3: Painted Sandblasted Glass:

a. Thickness: 6.4 mm (1/4 inch).

b. Pattern: As specified in Section 09 06 00, SCHEDULE FOR FINISHES."

14. SECTION 09 65 13 – RESILIENT BASE AND ACCESSORIES

A. Article 2.2: Change Paragraph B as follows:

"B. Non-Profile Base:

1. ASTM F1861, 3 mm (1/8 inch) thick, 100 mm (4 inches) high, Thermoplastics, Group 2-layered. Style B-cove.

2. Where carpet occurs, use Style A-straight."

15. SECTION 10 28 00 – TOILET, BATH, AND LAUNDRY ACCESSORIES

A. Article 1.1, Paragraph B: Delete Sentences 1, 2, 11, & 12.

B. Delete Article 2.5

C. Delete Article 2.6

D. Article 2.12: Change Paragraph A to read:

"A. Casework mounted with swivel ring."

E. Delete Article 2.16

F. Article 2.8, Paragraph D: Change part 1 as follows:

"1. Fabricate from 32 mm (1 1/4" inch) outside diameter tubing, stainless steel, minimum 1.2 mm (0.0478 inch) thick."

16. SECTION 32 90 00 – PLANTING

A. Add Article 2.14 as follows:

"2.14 DETECTABLE PAVING

A. Concrete Paving Units with truncated comes compliant with ADA guidelines for detectable warning. Color: Charcoal

1. Product: ADA Compliant Paver; Product number 200 by Pavestone
<http://www.pavestone.com/ada-compliant-paver/>, or approved equal."

B. Add Article 2.15 as follows:

"2.15 BICYCLE RACK

- A. Steel, powder coated. 1 7/8" diameter, schedule 40; Hoop rack. Color: Black.
 1. Product: "High Security" by Eugene Rack Works, phone 541-344-1197, or approved equal."

DRAWING SHEETS

1. ALL SHEETS – GENERAL

A. Add General Note as follows:

REFER TO GI-002 AND STRUCTURAL PLANS FOR LOCATIONS OF FIRE RATED WALL
FOR BOTH OCCUPANCY AND CONSTRUCTION TYPES

2. SHEET GS-120 – SITE PLAN

- A. Replace sheet revising the following items:
- A. Correcting detail reference at "Metal Fence – Double Gate"
 - B. Adding hand rails at accessible ramp

3. SHEET AS-110 – DRAWING F1

- A. Add window tag "B" to window north of door 100.1
- B. Add window tag "B" to window north of door 100.2
- C. Change wall type/tag letter designation between Bath 3-116B & Bath 4-117B from "A" to read "B"

4. SHEET AS-111 – DRAWING F1

- A. Change wall type/tag on north & south side of the fire place from "2A" to "2B"
- B. Change wall type/tag on the (6) walls surrounding Home Office-107 from type 8 to type 3. Letter designations following type number to remain the same.
- C. Change wall type/tag letter designation for wall between Bedroom Suite 5-118 & Bedroom Suite 6-119 from "A" to "B". Number designations to remain the same.
- D. Change wall type/tag letter designation for wall between Bedroom Suite 7-120 & Bedroom Suite 8-121 from "A" to "B". Number designations to remain the same
- E. Change wall type/tag for west Kitchen-109 wall from "12A" to "2A".
- F. Change wall type/tag letter designation between Bath 9-122B & Bath 10-123B from "A" to "B"

5. SHEET AS-112 – DRAWING F1

- A. Add floor clean out in Toilet-C102 to coordinate with plumbing drawings.

B. Change window "Type E" on north wall - west of door, to "Type B".

6. SHEET AS-112 – DRAWING F1

A. Add to Reflected Ceiling Plan General Notes #12 as follows:

12. INSTALL COVE MOLDING AT WALL TO CEILING TRANSITIONS IN LIVING-105, ACTIVITY-106, DINING-108, & KITCHEN-109. REFER TO COVE MODELING DETAIL B7/AS-522.

7. SHEET AS-200 – DRAWING C1 & F1

A. Delete horizontal joint (and corresponding note: "SIDING PANEL, HORIZONTAL JOINT WITH Z-FLASHING") located on gable ends.

8. SHEET AS-201 – DRAWING D7

A. Clarification finish on chimney is LAP SIDING – A

B. Add note at brick 135 degree corner that reads

A. SPECIAL BRICK – 135 DEGREE CORNER BRICK. OUTSIDE FACE LENGTHS TO BE 7 5/8" & 3 5/8". HEIGHT AND DEPTH TO MATCH ADJACENT.

9. SHEET AS-201 – DRAWING F1

A. Clarification finish on chimney is LAP SIDING – A

10. SHEET AS-202 – DRAWING B1, D1, & D5

A. Change note that reads "FIBER CEMENT PANEL WITH BATTENS @ 12" OC, TYP" to read

A. FIBER CEMENT PANEL WITH BATTENS @ 16" OC, TYP

11. SHEET AS-203 – DRAWING A1

A. Change hatch represented finish on parapet above sloped roof and roof hatch surround walls from board and batten siding to Lap Siding Type A.

B. Add note on parapet above sloped roof that reads:

A. LAP SIDING TYPE-A

12. SHEET AS-203 – DRAWING D1

A. Change hatch represented finish roof hatch surround walls from board and batten to Lap Siding Type A.

B. Add note at roof hatch that reads:

A. LAP SIDING TYPE-A

13. SHEET AS-310 – DRAWING E1, E4, & E6,

A. Change under WALL ASSEMBLY – 3/4" VERTICAL FURRING STRIPS to read: "Z-FURRING"

- B. Clarification the vapor retarder on the interior side of the wall is to extend past the top plate and attached to underside of roof structure as shown in wall section F3/AS-311

14. SHEET AS-401 – DRAWING F3

- A. Clarification the tile finish is to end above the glass tile boarder to the right of the line indicated “BULLNOSE TILE AROUND CORNER”. Note that the tile shown above the glass tile boarder in drawings F2 & F4 to the right of the bullnose tile should be gypsum board finish.

15. SHEET AS-501 – DRAWING C5

- A. Change trim note from “2” TALL X 3 1/4” DEEP TRIM AT CONTINUOUS WOOD BAND/ 3 A1/2” TALL X 3 1/4” DEEP TRIM AT NO WOOD BAND – SLOPE TOP” to read:

2” TALL X 3 1/4” DEEP TRIM AT CONTINUOUS WOOD BAND – SLOPE TOP

16. SHEET AS-501 – DRAWING D7

- A. ADD note to jamb brick that reads:

SPECIAL BRICK, L-SHAPE WITH EXTERIOR DIMENSIONS OF 5 1/4” DEEP X 7 5/8” LONG. HEIGHT AND WIDTH TO MATCH ADJACENT BRICK SIZES.

17. SHEET AS-502 – DRAWING F6

- A. Change note “(2) LAYERS GYPSUM BOARD AT JOIST BAY – EXTEND GYPSUM BOARD ASSEMBLY TO 1-HOUR RATED WALL AT HALLWAY” to read:

(2) LAYERS GYPSUM BOARD AT JOIST BAY – EXTEND FIRE RATED GYPSUM BOARD ASSEMBLY TO MEET PERPENDICULAR FIRE RATED ASSEMBLIES AT BOTH THE HALLWAY AND EXTERIOR WALL

18. SHEET AS-520

- A. Add general note “6.” As follows:

6. WHERE FIRE RATED TILE WALL ASSEMBLIES REQUIRED CEMENTITIOUS BACKER BOARD TO BE FIRE RATED CEMENTITIOUS BACKER BOARD

19. SHEET AS-521 – DRAWING F3

- A. Add the following note at the slab recess:

2” SLAB RECESS, TYPICAL UNO

20. SHEET AS-522 – DRAWING E3

- A. Replace detail with attached detail including cove molding

- B. Change note “GLASS PANEL” to read:

CP-1 IN KITCHEN-109/ACTIVITY-106 & CP-3 IN DINING-108. APPLY OBSCURE FILM ON BACK SIDE OF CP-1 & CP-3

21. SHEET AS-523 – DRAWING B7

- A. Change wall tag/type on right and left side of fire place from “2A” to “2B”

22. SHEET AS-524 & AS-525

- A. Change general note 2 to read the following:

2. PROVIDE LOCKS ON ALL DOORS AND DRAWERS UNLESS NOTED OTHERWISE - NO LOCKS REQUIRED ON TYP BARIATRIC DRESSER (C5/AS-525), TYP BED DESK (C6/AS-525), TYP BED DRESSER(C7/AS-525), AND TYP BED WARDROBE (C8/AS-525).

- B. Detail E5 AND E6: Change metal angle from L2x2 to L1½ x 1½.

23. SHEET AS-600 – DOOR TYPE 2

- A. Add note under door type

- A. OFFSET WEIGHT IN BOTTOM OF DOOR SO THAT NON-OPENING SIDE OF DOOR WEIGHS MORE THAN OPENING SIDE OF DOOR

24. SHEET AS-600 – DOOR SCHEDULE

- A. Add the following note under comments for doors 102.1, 102.2, 102.3, 102.4, 102.5, 119.1, 120.1, 104.1, 104.2, 104.3, 104.4, &125.1

“SOUND RATED DOORS (STC = 36 MIN)”

25. SHEET AS-700

- A. Add the following general notes

- A. RECLAIMED WATER SIGN PER O.P.S.C. 1619 TO BE INSTALLED NEXT TO ALL TOILETS. COORDINATE LOCATION WITH ARCHITECT.

- B. NO SMOKING SIGNS TO BE LOCATED NEAR DOORS D111.2, D111.5, & E100.1

26. SHEET FA-100 – FIRE ALARM SYSTEM PLAN

- A. Delete fire sprinkler pressure, tamper, and low air switches located at east side of Unit C – Salon/Gatehouse associated with the dry fire sprinkler system for the pergola. Unit C remains sprinklered.

- B. Add the following General Notes:

4. MANUAL PULL STATIONS ARE REQUIRED AT ALL EXTERIOR EXITS INCLUDING MECHANICAL AND ELECTRICAL ROOMS IN UNIT D.

27. SHEET FA-110 – FIRE SUPPRESSION SYSTEM PLAN

- A. Delete dry well system providing fire suppression at the pergola.

- B. Delete pergola notes (1-6).

- C. Add the following under PERGOLA NOTES:

7. The elimination of the fire sprinkler from the pergola only has been approved per the VA

VISN 20 Fire Protection Staff – Russ Lambert.

D. Add the following General Notes:

4. SPRINKLER LAYOUT SHOWS A DESIRABLE CONCEPT. SPRINKLER SPACING TO BE REVISED FROM THE BID DOCUMENT TO ACCOMMODATE CEILING POCKETS AND OBSTRUCTIONS, UNCLUDING USE OF SIDEWALL OR EXTENDED COVERAGE SPRINKLERS OR ADDITIONAL SPRINKLERS.
5. SPRINKLERS LOCATED IN CEILING TILES SHALL BE LOCATED IN CENTER OF TILE.
6. SPRINKLERS IN NON-CEILING TILED AREAS SHALL BE ARRANGED IN A UNIFORM PATTERN.
7. SKYLIGHT BASES EXCEED 32 SF. SKYLIGHTS SHALL BE SPRINKLERED WITHIN 36" OF SKYLIGHT.

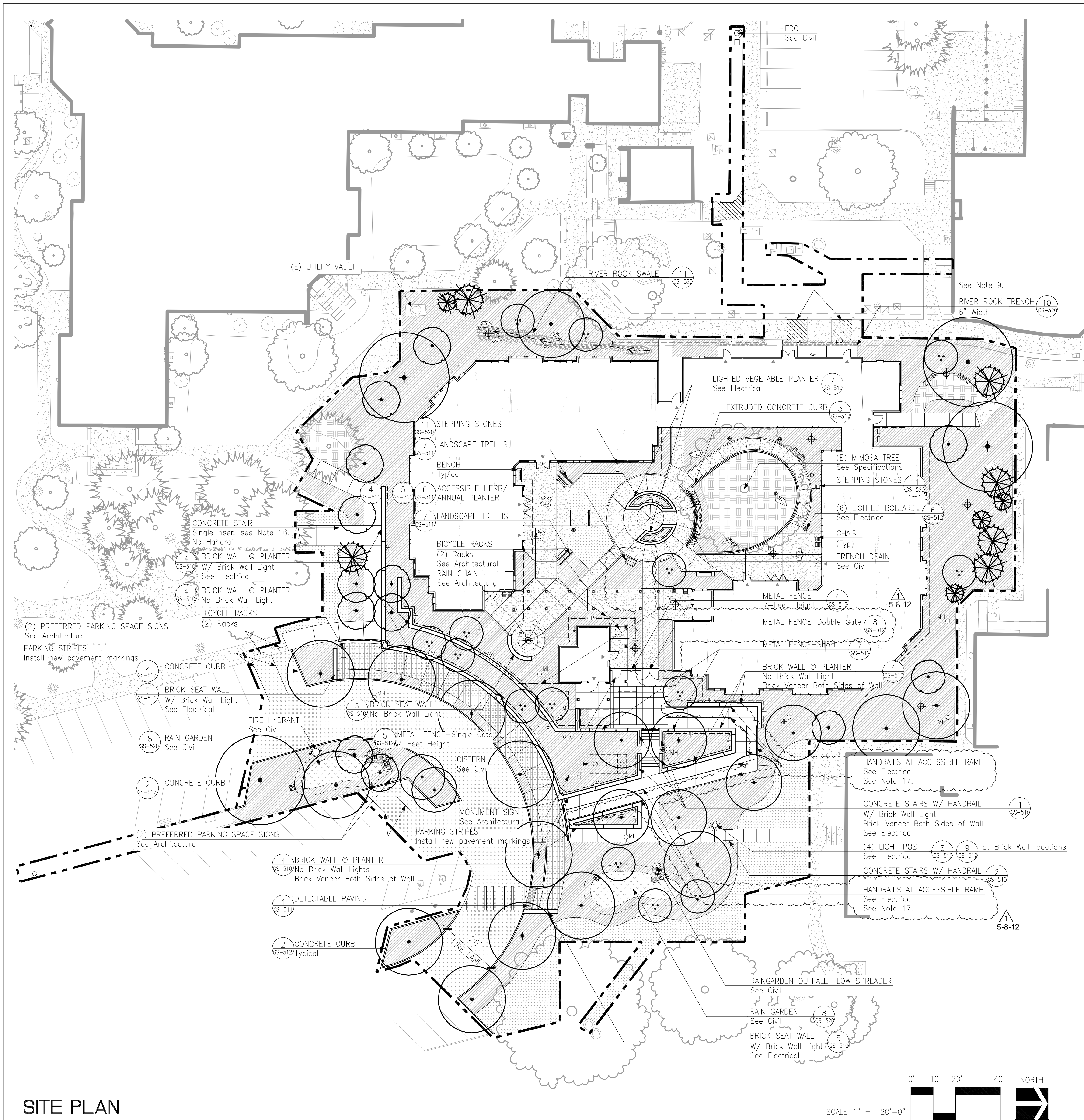
E. Add the following Sheet Notes:

8. THE DRY WELL WILL CONTAIN A BALL VALVE DRAIN FOR THE WET SYSTEM SERVING THE SALON.
9. THE DRY WELL SHALL BE CONSTRUCTED SIMILAR TO THE DRY WELL SHOWN IN DETAIL 1 ON SHEET CU-120. THE DRY WELL SHALL BE SIZED TO ACCESS THE BALL VALVE.

28. SHEET FA-510 – FIRE SUPPRESSION DETAILS, SECTIONS

A. Delete fire suppression pergola details 3, 4, & 5

END OF ADDENDUM NO. 1



NOTES

- Survey information provided by: Balzhiser & Hubbard Engineers
100 West 13th Avenue
Eugene, OR 97401
- Verify existing conditions in the field. Notify Owner's Representative of any discrepancies.
- Verify exact locations and routing of existing underground utilities prior to starting excavation. Repair any damage to existing pipes, utilities, or related facilities at Contractor's expense in a manner provided by Owner's Representative.
- All concrete paving joints not specifically dimensioned shall be equally spaced between shown or noted limits.
- All accessible components including, but not limited to, signs, ramps, tactile warning, markings, etc. shall conform to all Oregon State Standards for parking and access for the disabled.
- Repair all areas disturbed or damaged by new construction no shown to be improved.
- Coordinate sleeve installation with utility work and other trades.
- Install new utilities so that rim elevations are flush with finish grades at pavement, lawn and plant beds. Adjust rim elevations of existing utilities accordingly.
- Match and install new handrail; connect to existing handrail; match size, type, and finish.
- At Concrete Repair, match adjacent existing pavement and base course thickness and finish.
- At Standard Concrete Paving, provide 4-inch concrete pavement (per Section 32 05 23) over 4-inch crushed rock (per Section 32 05 23) over prepared and approved subgrade (per Section 32 05 43).
- At Special Concrete Paving, provide 4-inch concrete pavement (per Section 32 05 23) over 4-inch crushed rock (per Section 32 05 23) over prepared and approved subgrade (per Section 32 05 43). Refer to detail 3/GS-511 for finishes.
- At Porous Asphalt, provide (2) 2-inch lifts porous asphalt pavement (per Section 32 12 43) over 2-inch minimum depth crushed rock porous pavement topping course (per Section 32 12 43) over 11-inch minimum depth crushed rock porous pavement base (per Section 32 12 43) over prepared and approved subgrade (per Section 32 12 43).
- At Porous Concrete, provide 5.37-inch loose (5.0-inch compacted) porous concrete pavement (per Section 32 13 00) over prepared and approved subgrade (per Section 32 13 00).
- At perforated pipe, cap perforated pipe ends and slope continuously to drain to site storm drains. Refer to Specification 33 40 00. Refer to Civil Plans for connection points.
- At Concrete Stair with single riser, construct stair and nosing to match other stairs on Project. Refer to details 1/GS-510 and 2/GS-510.
- For Handrails at Accessible Ramp, See VA Standard Details (PG-18-4) Detail number SD320523-01, Ramp for Disabled Persons.

LEGEND

- LIMITS OF WORK
- PROPOSED TREES
- EXISTING TREES To Remain
- EXISTING CONCRETE PAVING
- CONCRETE REPAIR See Note 11.
- STANDARD CONCRETE PAVING See Note 11.
- SPECIAL CONCRETE PAVING See Note 12.
- LAWN
- PLANT BED
- MULCH ONLY
- POROUS ASPHALT See Note 13.
- POROUS CONCRETE See Note 14.
- RAIN GARDEN BOTTOM
- RAIN GARDEN PERIMETER See Civil
- STORMWATER SWALE CENTER
- DECK DRAIN See Civil
- AREA DRAIN See Civil
- CATCH BASIN See Civil
- TRENCH DRAIN See Civil
- BENCH OR CHAIR Owner furnished
- OUTDOOR TABLES Owner furnished
- LIGHT POLE @ Brick Wall See Electrical
- LIGHTED BOLLARD See Electrical
- ACCENT STONE
- PROPOSED MANHOLE See Civil
- BUILDING ENTRANCE/EXIT
- PERFORATED PIPE See Note 15.

SITE PLAN

Addendum 1	5-8-12
Revisions:	Date

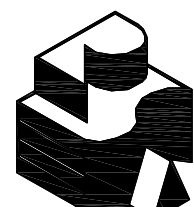
CONSULTANTS:

CAMERON McCARTHY LANDSCAPE ARCHITECTURE & PLANNING
180 East Broadway • Eugene Oregon 97401 • P 541.486.7385
www.cameronmccarthy.com • F 541.486.7389



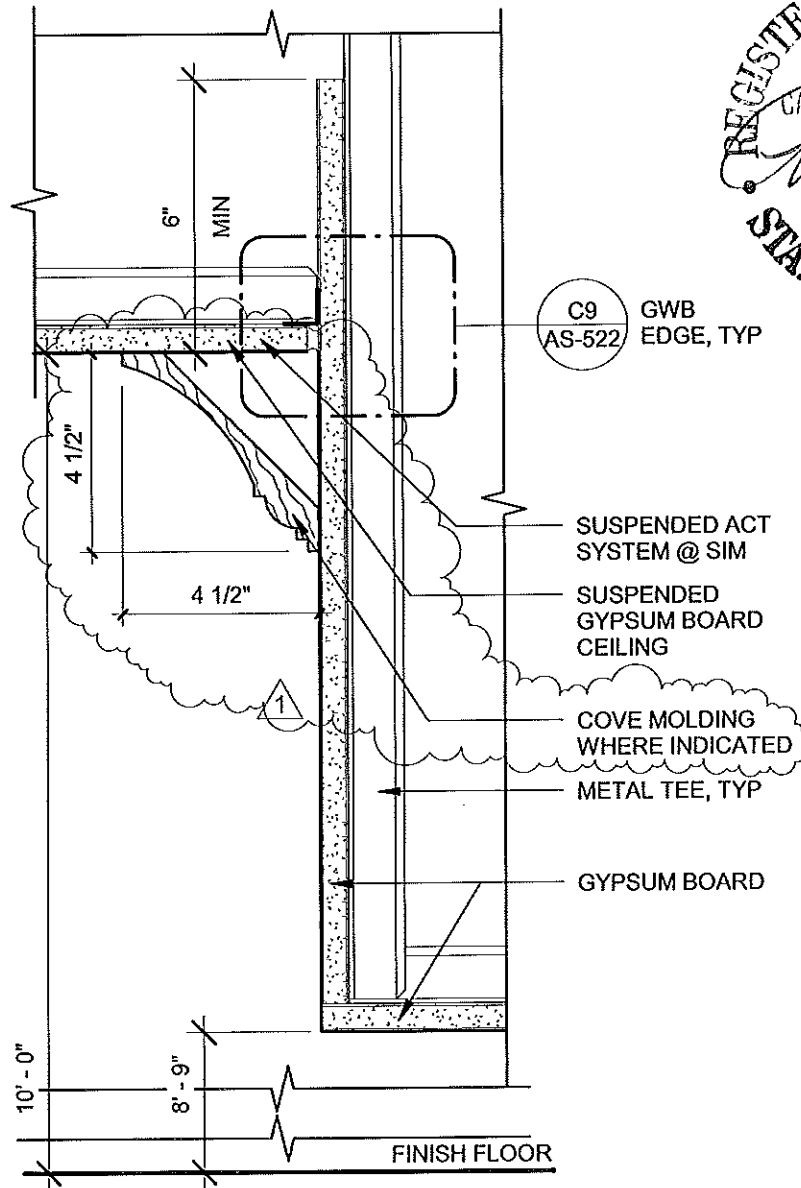
ARCHITECT:

Robertson Sherwood Architects PC
132 East Broadway, Suite 540 Eugene, Oregon 97401
P 541 | 342.8077 F 541 | 345.4302 www.robertsonsherwood.com



Drawing Title	SITE PLAN
Approved Project Director	

Project Title	COMMUNITY LIVING CENTER EXPANSION	Project Number	653-321
Location	913 NW Garden Valley Boulevard Roseburg, OR 97470	Building Number	85
Date	3-15-12	Checked	JKL
Drawn	ZWR	Drawing Number	GS-120
Office of Construction and Facilities Management Department of Veterans Affairs			



AD-01 - GYPSUM CEILING TRANSITION @ SOFFIT

B7

3" = 1'-0"

SHEET AS-522

COMMUNITY LIVING CENTER EXPANSION

913 NW Garden Valley Boulevard, Roseburg, OR 97471



Robertson | Sherwood | Architects_{pc}

132 East Broadway, Suite 540
Eugene, Oregon 97401

P 541 | 342.8077
F 541 | 345.4302

ADDENDUM-01

Drawn By JR

Checked

Date 6/21/12

Project 653-321

AD1.01