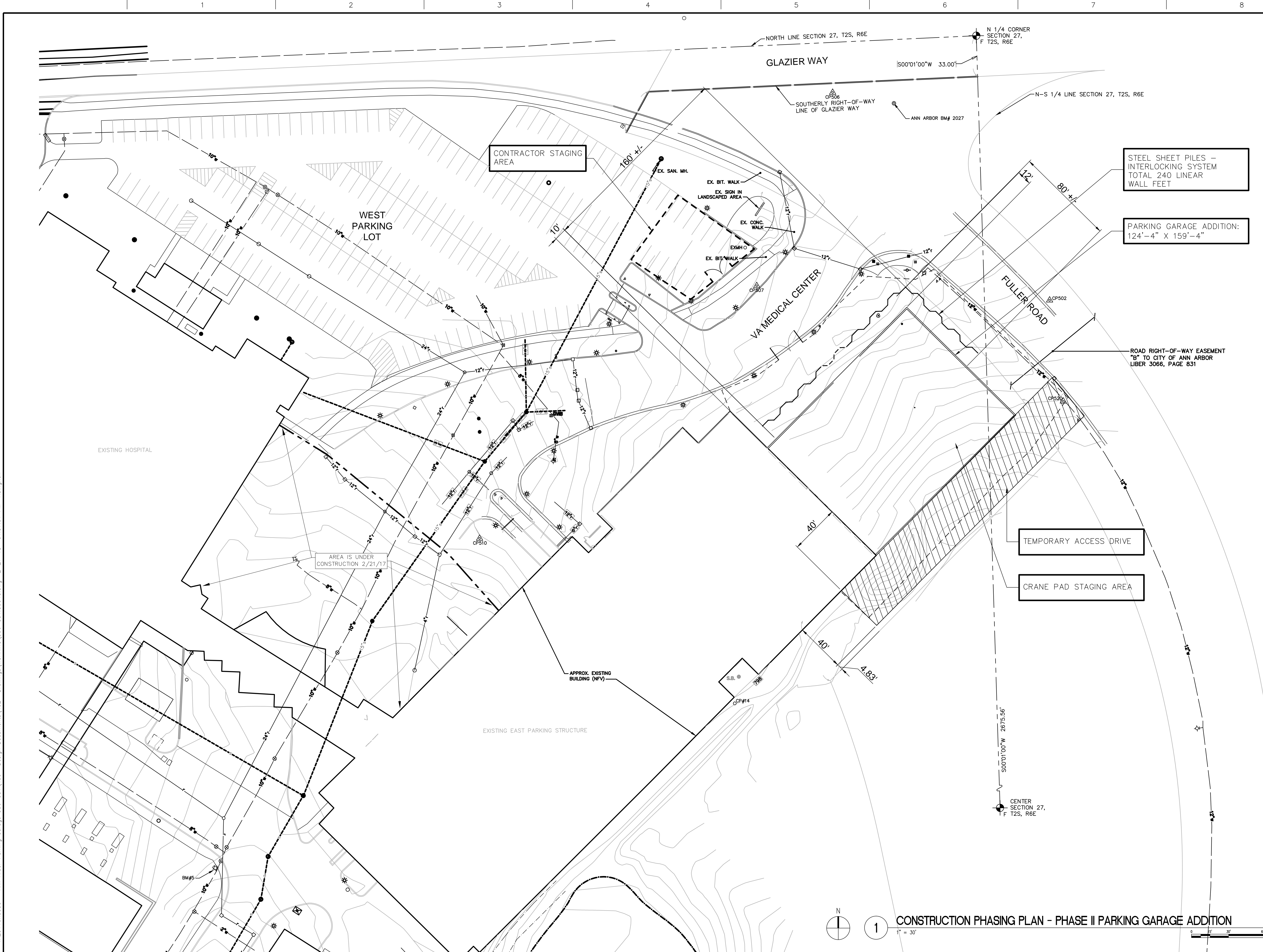


three inches = one foot  
one and one half inches = one foot  
one inch = one foot  
three quarters inch = one foot  
one half inch = one foot  
three eighths inch = one foot  
one quarter inch = one foot  
one eighth inch = one foot



### GENERAL NOTES

- PHASE II CONSTRUCTION ACTIVITIES ARE FOR PARKING GARAGE HORIZONTAL ADDITION.
- VA MEDICAL CENTER MAIN DRIVE WILL REMAIN OPEN FOR PUBLIC ACCESS FROM MONDAY 12:00 AM THROUGH FRIDAY 11:59 PM.
- VA MEDICAL CENTER MAIN DRIVE WILL BE AVAILABLE FOR CONSTRUCTION ACTIVITIES FROM SATURDAY 6:00 AM THROUGH SUNDAY 11:59 PM.
- CONTRACTOR WILL PROVIDE WRITTEN NOTIFICATION TO THE VA FOR WEEKEND WORK TWO WEEKS PRIOR TO START DATE.
- CONTRACTOR WILL CLEAN VA MEDICAL CENTER MAIN DRIVE OF ALL CONSTRUCTION DEBRIS AT COMPLETION OF EVERY WORKDAY.
- CONSTRUCTION ACTIVITIES FOR THE PARKING GARAGE HORIZONTAL ADDITION WILL BE COMPLETED DURING NORMAL BUSINESS HOURS OF OPERATION. NO WORK WITHIN EXISTING PARKING GARAGE WILL BE PERMITTED DURING NORMAL BUSINESS HOURS. NORMAL BUSINESS HOURS ARE MONDAY 12:00 AM THROUGH FRIDAY 11:59 PM.
- ACTIVITIES RELATED TO VERIFICATION OF EXISTING CONSTRUCTION ELEMENTS WILL BE COMPLETED DURING THE WEEKEND HOURS OF OPERATIONS LISTED ABOVE.

### PHASING PLAN NOTES

- PHASE II CONSTRUCTION IS ASSOCIATED WITH THE CONSTRUCTION ACTIVITIES OF THE PARKING GARAGE HORIZONTAL ADDITION. REFER TO ALL DRAWINGS AND SPECIFICATIONS FOR ADDITIONAL INFORMATION.
- REFER TO CIVIL DRAWINGS FOR EXISTING GRADE ELEVATIONS.
- REFER TO SPECIFICATIONS APPENDIX A FOR GEOTECHNICAL EVALUATION REPORT AND RELATED SOIL BORING LOG.
- CONTRACTOR WILL BE RESPONSIBLE FOR ALL DEWATERING DURING CONSTRUCTION PHASING AND OPERATIONS.
- CONTRACTOR WILL PROVIDE THE DESIGN, ENGINEERING AND INSTALLATION OF THE TEMPORARY STEEL SHEET PILE SYSTEM. REFER TO SPECIFICATION SECTION 31 62 16 STEEL SHEET PILES FOR ADDITIONAL INFORMATION/REQUIREMENTS.
- CONTRACTOR WILL PROVIDE COMPACTED ENGINEERED FILL-STONE AGGREGATE AT TEMPORARY CRANE STAGING AREA AND ACCESS DRIVE.
- AT COMPLETION OF ERECTION ACTIVITIES OF PARKING GARAGE ADDITION CONTRACTOR WILL REMOVE TEMPORARY STEEL SHEET PILE AND/OR CUT DOWN TO A LEVEL OF 24-INCHES BELOW FINISH GRADE ELEVATIONS AND REMOVE ASSOCIATED CRANE STAGING AREA ENGINEERED FILL-STONE AGGREGATE.

### SITE STAGING NOTES

- CONTRACTOR WILL OBTAIN REQUIRED PERMITS FROM CITY OF ANN ARBOR FOR TEMPORARY ACCESS DRIVE AT FULLER ROAD.
- CONTRACTOR WILL PROVIDE TEMPORARY ACCESS DRIVE AT AREA INDICATED. TEMPORARY ACCESS DRIVE WILL BE A MINIMUM OF 24-INCHES COMPACTED GRANULAR FILL. PROVIDE CURB CUT AND REMOVAL ALONG FULLER ROAD.
- CONTRACTOR WILL SCHEDULE TRANSPORTATION OF OVERSIZED LOADS FOR WEEKDAY DELIVERY.
- NO OVERSIZED LOADS CAN BE TRANSPORTED TO PROJECT SITE DURING WEEKENDS.
- CONTRACTOR WILL PROVIDE ALL TRAFFIC CONTROL MEASURES AS REQUIRED BY THE CITY OF ANN ARBOR.
- ACTIVITIES ASSOCIATED WITH THE INSTALLATION OF THE TEMPORARY STEEL SHEET PILE SYSTEM WHICH REQUIRES ACCESS FROM THE VA MEDICAL CENTER DRIVE WILL BE SCHEDULED FOR WEEKENDS.
- ACTIVITIES ASSOCIATED WITH SITE CLEARING, EXCAVATION, CONCRETE PILES, CONCRETE PILE CAPS AND CAST IN PLACE CONCRETE FOUNDATIONS WILL BE ACCESSED FROM THIS TEMPORARY ACCESS DRIVE.
- CONTRACTOR WILL PROVIDE CRANE PAD WITHIN PROJECT LIMITS FOR ERECTION OF PRECAST CONCRETE STRUCTURE AT HORIZONTAL PARKING GARAGE BUILDING ADDITION.

1 CONSTRUCTION PHASING PLAN - PHASE II PARKING GARAGE ADDITION

<b>CONSULTANTS:</b>  WALKER PARKING CONSULTANTS 3000 Ann Arbor Drive, Suite 100 Ann Arbor, MI 48106		<b>MIDWESTERN CONSULTING</b> 3815 Plaza Drive Ann Arbor, Michigan 48108 (734) 995-0200 • www.midwesternconsulting.com Land Development • Land Survey • Institutional • Municipal Wireless Communications • Transportation • Landfill Services		<b>KEYPLAN</b> 1		<b>ARCHITECT + ENGINEERS:</b>  BANCROFT ARCHITECTS + ENGINEERS 700 Nicholas Blvd., Suite 300 Elk Grove Village, IL 60007 Telephone : 847.952.9362 www.bancroft-ae.com Bancroft-AE Project No. 16-121 VA CONTRACT NO. VA250-17-C-0008		<b>Drawing Title</b> CONSTRUCTION PHASING PLAN - PHASE II PARKING GARAGE ADDITION <b>Approved Project Director</b>		<b>Project Title</b> CONSTRUCT NORTH PARKING STRUCTURE <b>Location</b> ANN ARBOR, MICHIGAN <b>Date</b> 02-27-2018 <b>Checked</b> EM <b>Drawn</b> AG		<b>Project Number</b> 506-331 <b>Building Number</b> 29 <b>Drawing Number</b> G-004C		<b>Office of Construction and Facilities Management</b> Department of Veterans Affairs	
---	--	---	--	---------------------	--	--	--	--	--	--	--	---	--	---	--