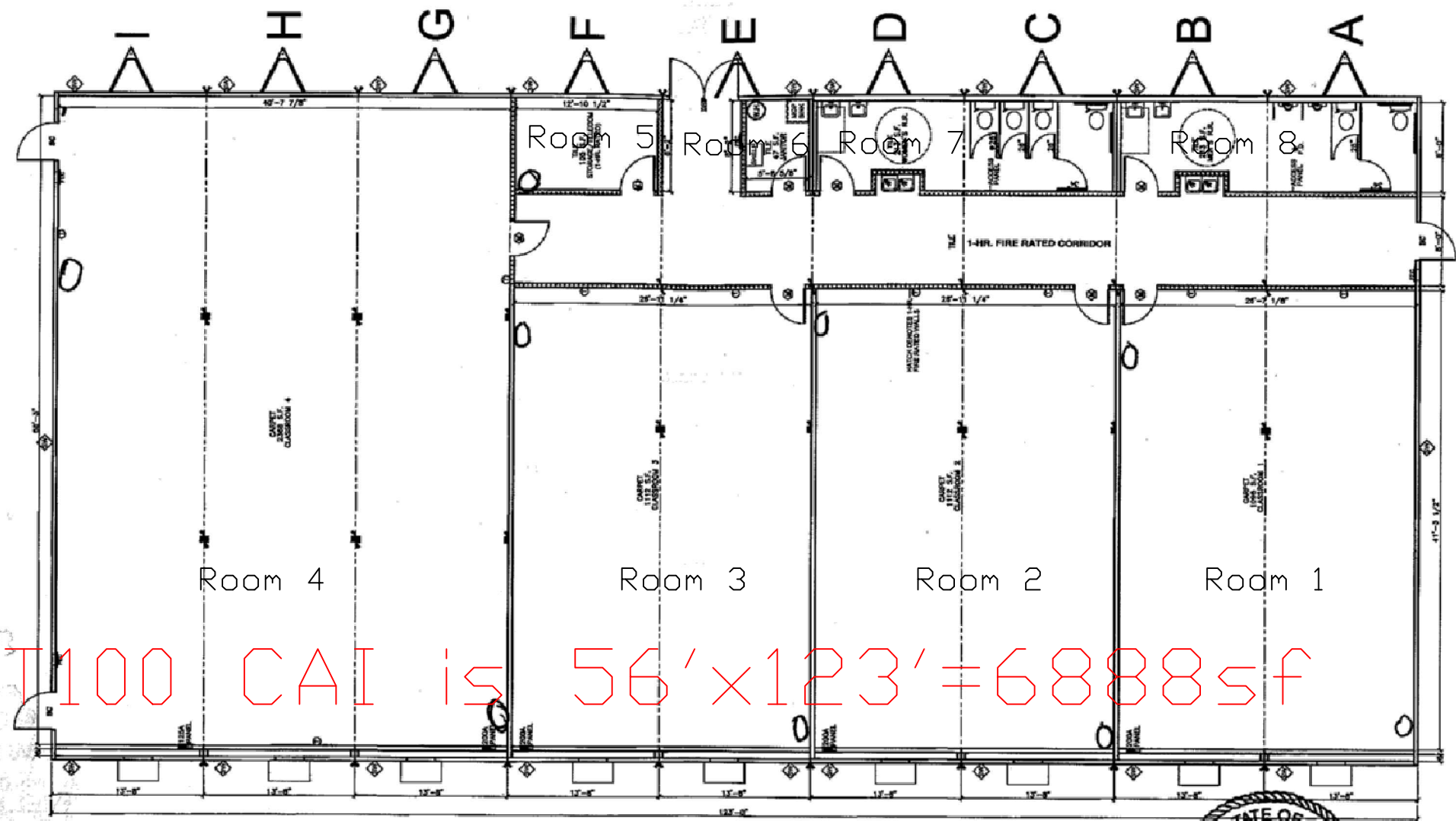


ATTACHMENT 1



NOTE:
1. R-11 UNFACED INSULATION IN ALL INTERIOR WALLS.
2. ALL INTERIOR WALLS TO BE FULL HEIGHT.
- SEE A-2.1 - A-2.9 FOR COLUMN FASTENING

SCHEDULE / LEGEND			
KEY	ITEM DESCRIPTION	SIZE	ROUGH OPENING
SC	36" X 80" STEELCRAFT W/ 6x27 PANE	36X80	40 1/2" X 82 1/2"
DSP	DBL. 36" X 84" STOREFRONT	72X84	78" X 86"
M	36" X 80" MOHAWK - SOLID CORE W/ 20 MIN. LABEL & HYD. CLOSER	36X80	37 1/4" X 81"
M	36" X 80" MOHAWK - SOLID CORE W/ 45 MIN. LABEL & HYD. CLOSER	36X80	37 1/4" X 81"

LTR	REVISION	BY	DATE	DRAWN BY:	PROJECT:	TITLE:
				M.L.S.	NORTEX MODULAR SPACE	FLOOR PLAN
			4/20/10		SCALE: 3/32"=1'-0"	DWG. NO. N12664-1

PFS

REVIEWED BY

Date: 5/17/10

PFS CORPORATION

Cottage Grove, WI



C:\DWG\Nortex Modular Space\N12664-1 (PFS Version).dwg, 5/10/2010 11:38:54 AM, M

APPROVED: MEDICAL CENTER DIRECTOR	APPROVED: CHIEF OF STAFF	APPROVED: WOMEN VET. PRDG. COORD.	APPROVED: SERVICE CHIEF	APPROVED: SERVICE CHIEF
APPROVED: ASSOCIATE DIRECTOR	APPROVED: FACILITY PLANNER	APPROVED: SERVICE CHIEF	APPROVED: SERVICE CHIEF	APPROVED:
APPROVED: ASSISTANT DIRECTOR	APPROVED: CHIEF ENGINEER	APPROVED: SERVICE CHIEF	APPROVED: SERVICE CHIEF	APPROVED:

DRAWING TITLE

CAI 2011

PROJECT TITLE

IDENTIFY DESIGNATION

DATE

15 JAN 04

PROJECT NUMBER

BUILDING NUMBER

1

CHECKED

Jon Miller

DRAWN

Rick Tangels

DRAWING NO.

LOCATION

C.A.V.H.S., LR DIVISION

Dwg 1 of 1

Office of Facilities

DEPARTMENT OF VETERANS AFFAIRS