

KEYNOTE LEGEND

1

2" W UP

2

3" W UP

3

4" W UP

4

1-1/2" V UP

5

2" V UP

6

4" W UP TO FCO

7

6" W UP TO FCO

8

3/4" CW & HW UP

9

PROVIDE ISLAND VENT AT P524

10

1/2" TP UP

11

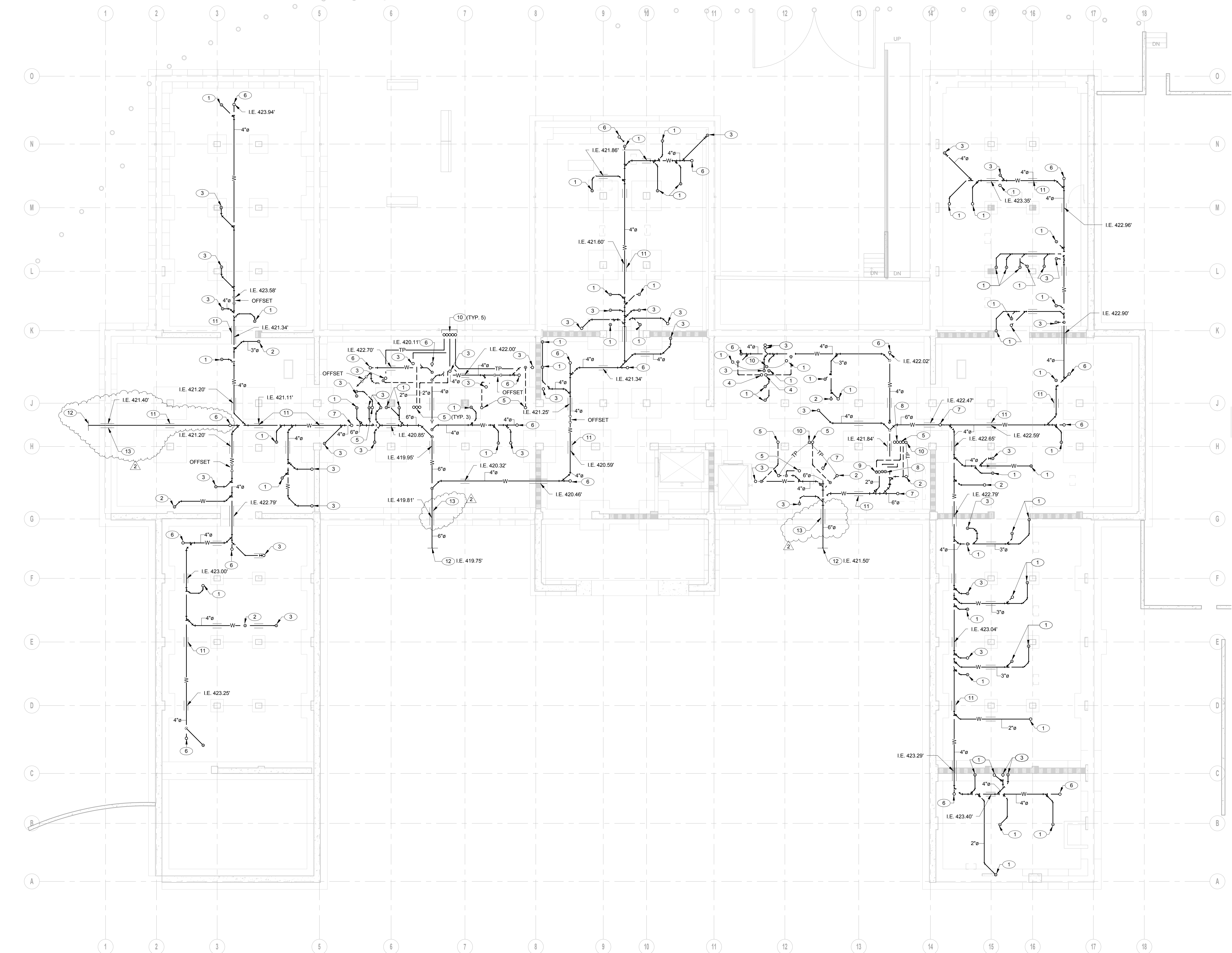
PIPE SLEEVE UNDER EXISTING CONCRETE STRUTS (TYP.) PROVIDE CONCRETE FILL AROUND PIPE SLEEVE TO UNDERSIDE OF STRUT/FOOTING. REFER TO STRUCTURAL DETAILS

12

FOR CONT. SEE P5101

13

PIPE SLEEVE BELOW FOOTING



1 PLUMBING FLOOR PLAN UNDERGROUND LAYOUT
SCALE: 1/8" = 1'-0"

7/23/2012 3:21:18 PM

DELTA NO. 2
07/24/12

DELTA NO. 1
07/20/12

FOR CONSTRUCTION
05/04/12

Revisions:
Date

CONSULTANTS:

S&K
ENGINEERS

421 EAST HUNTINGTON DRIVE
MONROVIA, CALIFORNIA 91016
P: 626-930-1383 F: 626-930-1385

ARCHITECT/ENGINEERS:
LEO A DAILY
27th Floor, 550 South Hope Street
Los Angeles, CA 90071 USA
Tel 213-629-0100 Fax 213-629-0070

Drawing Title
**PLUMBING FLOOR PLAN -
UNDERGROUND LAYOUT**

Approved: Project Director

Project Title
**VA GLA HEALTHCARE SYSTEM
WEST LA MEDICAL CENTER
SEISMIC CORRECTIONS**

Location
LOS ANGELES, CA 90073

Date
05/04/2012

Checked
RV

Drawn
MG

Project Number
691-406

Building Number
209

Drawing Number
PL000

Dwg. of

FULLY SPRINKLERED

Office of
Construction
and Facilities
Management

Department of
Veterans Affairs

JOB No. 09026.01

VA FORM 08-6231

KEYNOTE LEGEND

- 1 6" SANITARY BUILDING DRAIN. FOR CONT. SEE CIVIL DWGS.
2 2" COLD WATER. FOR CONT. SEE CIVIL DWGS.
3 4" WASTE. FOR CONT. SEE CIVIL DWGS.
4 1-1/2" PUMPED DISCHARGE & 2" VENT. FOR CONT. SEE PL100
5 CONNECT 4" COLD WATER TO (E) 4" COLD WATER BEL. GRD.
6 (E) 4" REDUCED PRESSURE BACKFLOW PREVENTER ASSEMBLY
7 4" COLD WATER. FOR CONT. SEE PL100
8 6" SANITARY SOWER. FOR CONT. SEE PL100
9 4" SANITARY SEWER FOUNTAIN DRAIN. FOR CONTINUATION SEE CIVIL DWGS. AND PL100

three inches = one foot

one and one half inches = one foot

one inch = one foot

three quarters inch = one foot

one half inch = one foot

three eighths inch = one foot

one quarter inch = one foot

one eighth inch = one foot

7/23/2012 3:28:16 PM

VA FORM 08-6231

1 PLUMBING SITE PLAN

SCALE: 1" = 10'-0"

CONSULTANTS:

S&K
ENGINEERS

421 EAST HUNTINGTON DRIVE
MONROVIA, CALIFORNIA 91016
P: 626-930-1383 F: 626-930-1385

JOB No. 09026.01



ARCHITECT/ENGINEERS:

LEO A DAILY

27th Floor, 550 South Hope Street
Los Angeles, CA 90071 USA
Tel 213-629-0100 Fax 213-629-0070

Drawing Title
PLUMBING SITE PLAN

Approved: Project Director

Project Title
**VA GLA HEALTHCARE SYSTEM
WEST LA MEDICAL CENTER
SEISMIC CORRECTIONS**

Location
LOS ANGELES, CA 90073

Date
05/04/2012

Checked
RV

Drawn
MG

Project Number
691-406

Building Number
209

Drawing Number
PS101

Dwg. of

FULLY SPRINKLERED

Office of
Construction
and Facilities
Management

