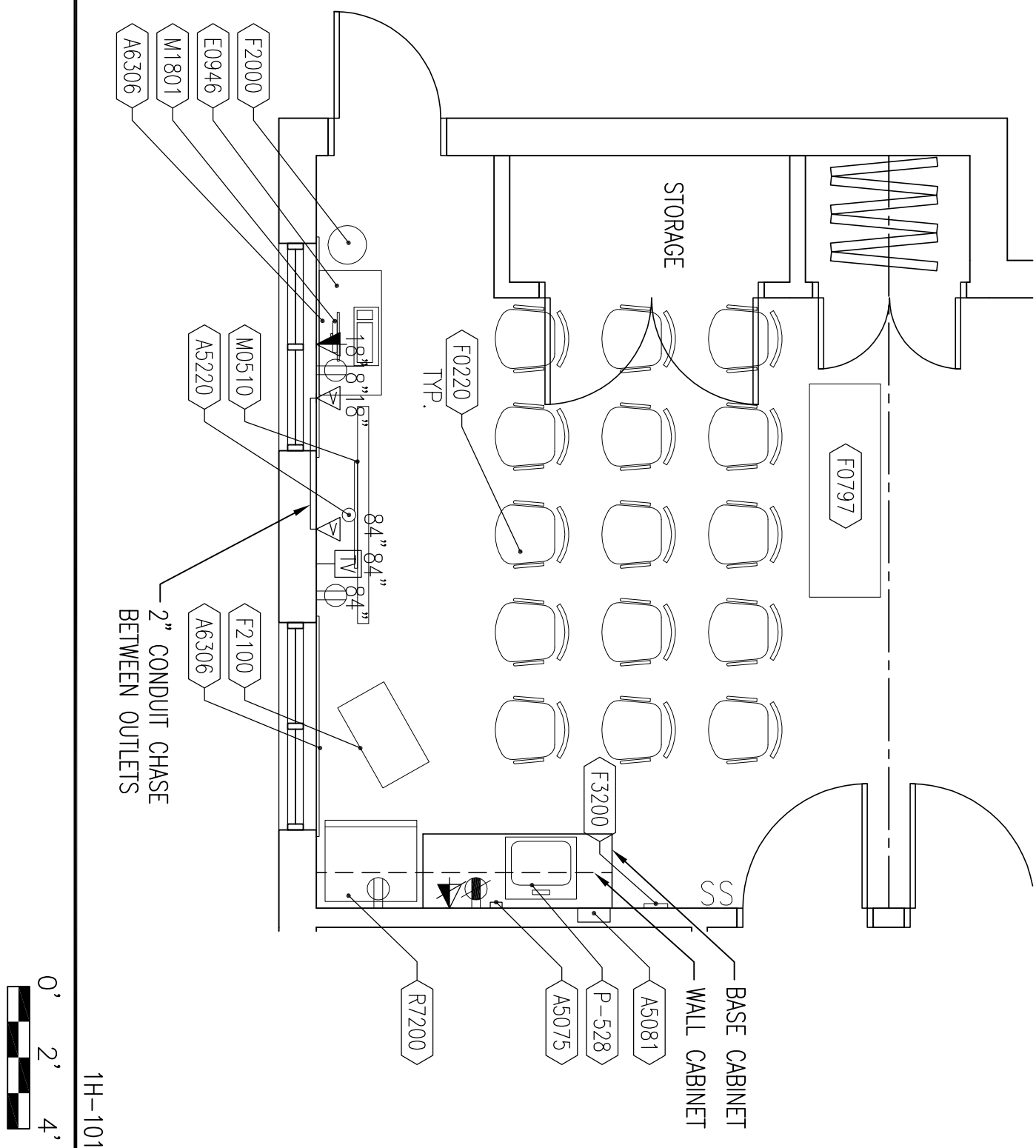
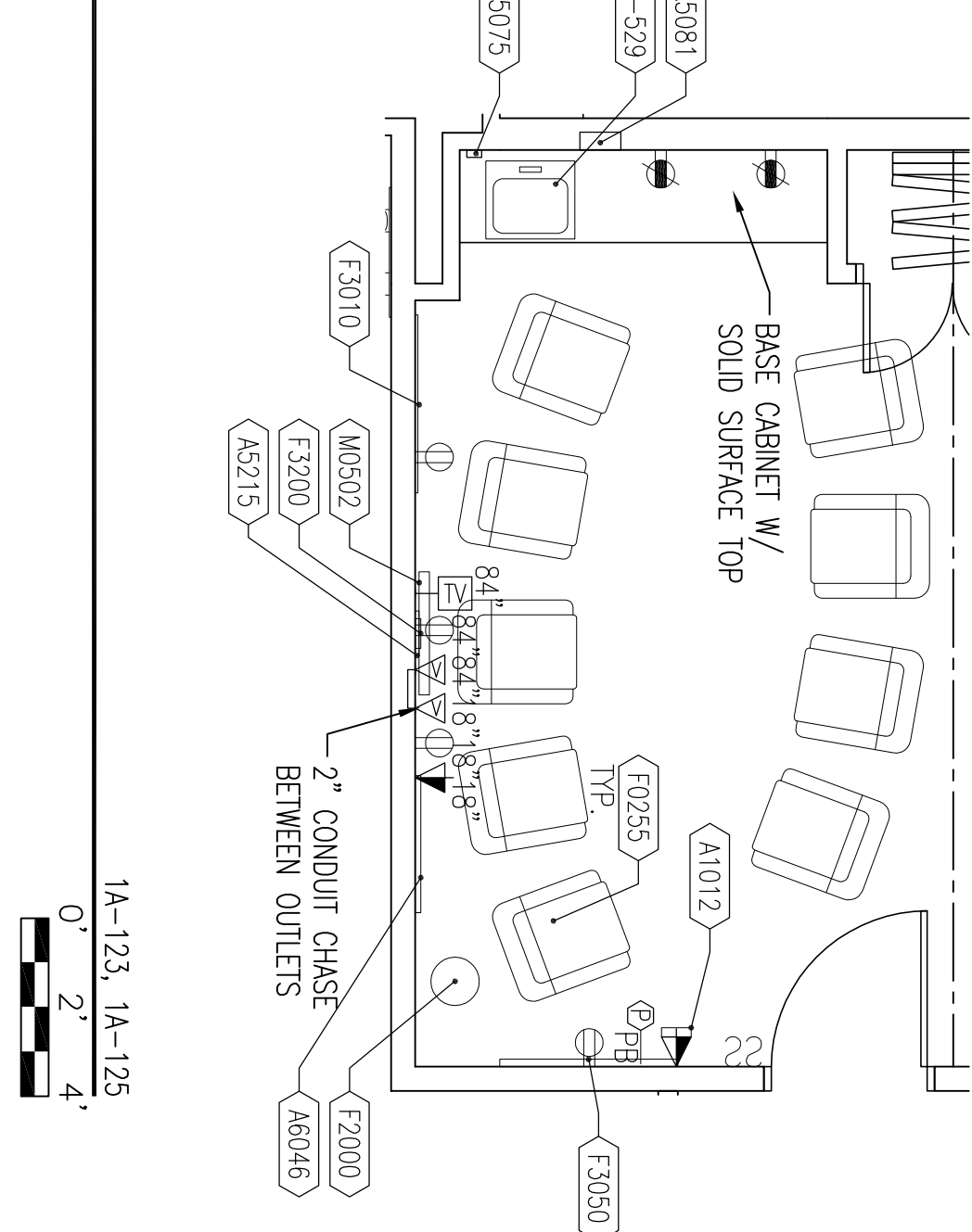


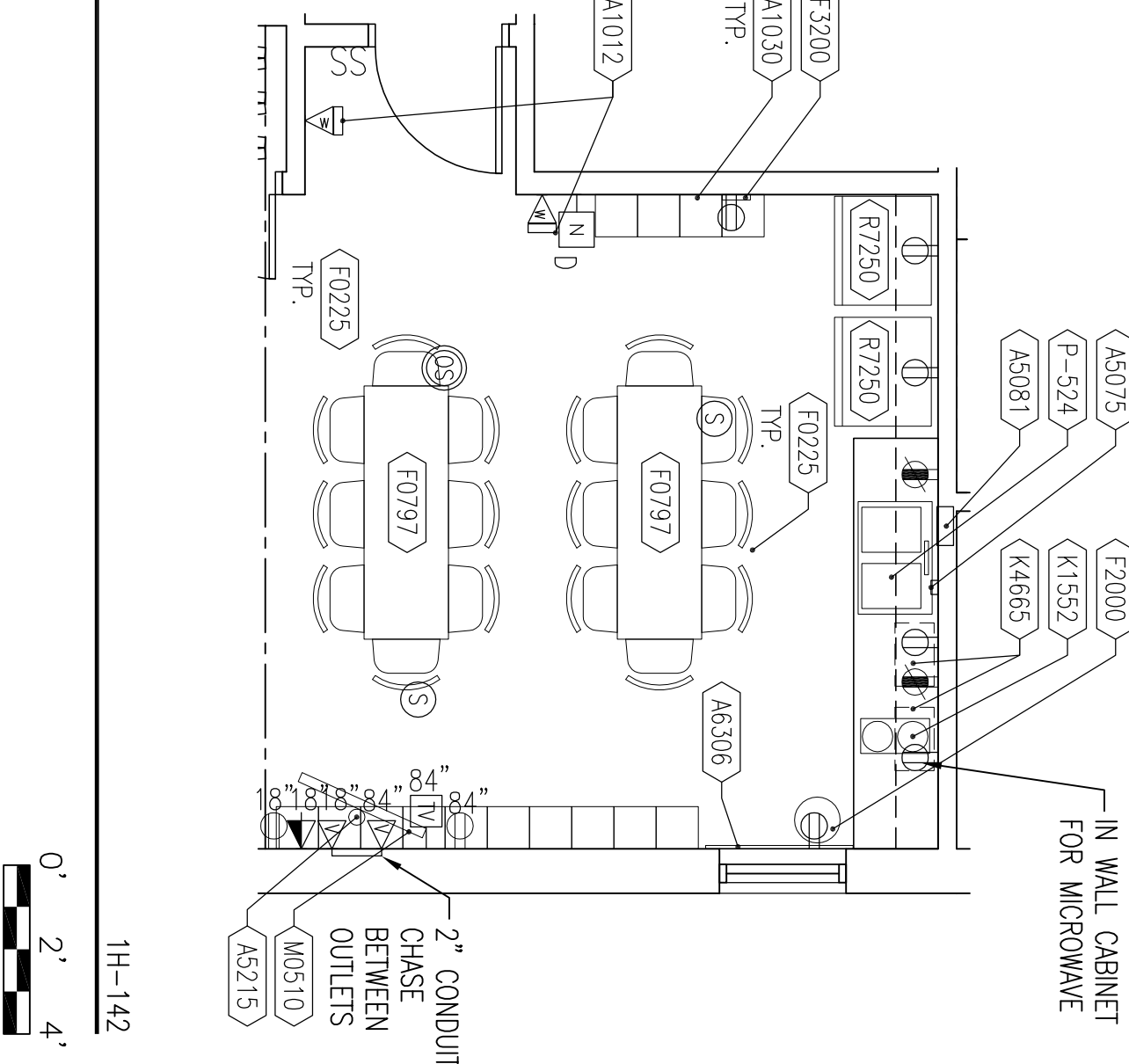
| # of Rms | QTY/RM | ISS # | AI | DESCRIPTION | TOTAL QTY |
|----------|--------|-------|-----|--|-----------|
| 1 | 1.0 | 45075 | L/L | DISPENSER, SOAP, DISPOSABLE | 1 |
| 1 | 1.0 | A6081 | L/L | RECESSED DISPENSER, PAPER TOWEL, | 1 |
| 1 | 1.0 | A6520 | L/L | BRACKET, TV/MONITOR, WALL MOUNTED | 1 |
| 1 | 2.0 | A6036 | L/L | SHADES, BACKOUT | 2 |
| 1 | 1.0 | E0946 | V/V | CART, MOBILE, WORKSTATION, ADJUSTABLE | 1 |
| 1 | 1.0 | | | HEIGHT W/CASTORS | |
| 1 | 15.0 | F0020 | V/V | CONFERENCE CHAIR | 15 |
| 1 | 1 | F0797 | V/V | FOLDING TABLE, 72" X 24" | 1 |
| 1 | 1 | F2000 | V/V | WASTE RECEPTACLE | 1 |
| 1 | 1.0 | F2100 | V/V | MOBILE TELEPH | 1 |
| 1 | 1.0 | F2250 | V/V | CAMERA VIDEO | 1 |
| 1 | 1.0 | F3200 | V/L | CLOCK, WALL MOUNTED | 1 |
| 1 | 1.0 | M0610 | V/V | MONITORING, FLAT PANEL, 52" | 1 |
| 1 | 1.0 | M1801 | V/V | COMPUTER SYSTEM W/ KEYBOARD | 1 |
| 1 | 1.0 | P-528 | L/L | SINK, SELF RINNING, S.S., W/ WRIST BRUSH | 1 |
| 1 | 1.0 | | | 6000SERIES FACET | |
| 1 | 1.0 | U0609 | L/L | BRACKET, CAMERA | 1 |
| 1 | 1.0 | | | REFRIGERATOR/ FREEZER W/ ICEMAKER, 17 CF | 1 |



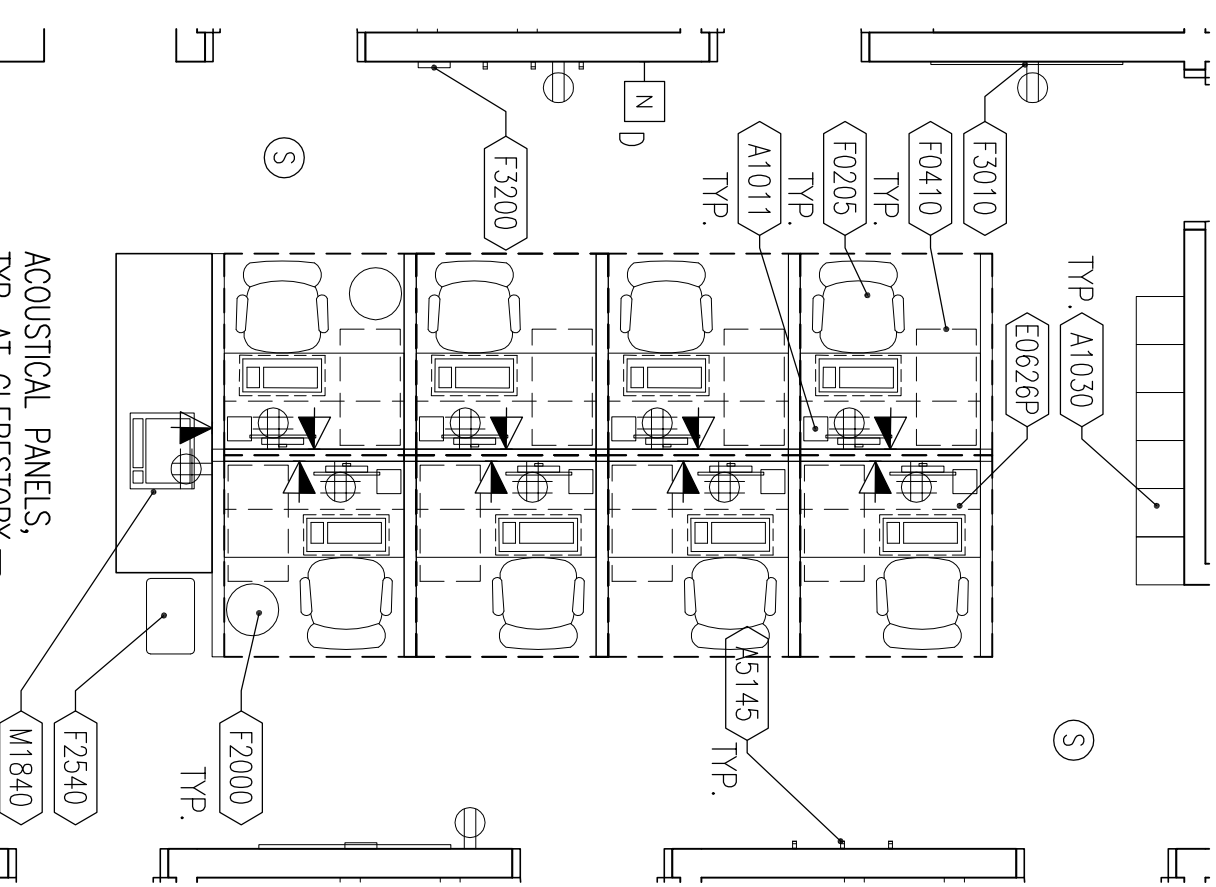
| Item # | Qty/Item | ASN# | AI | Description | Total Qty |
|--------|----------|-------|-----|--|-----------|
| 2 | 1.0 | A1012 | V/A | TELEPHONE, WALL MOUNTED | 2 |
| 2 | 1.0 | A5073 | V/A | LIQUID SOAP DISPENSER, WALL MOUNTED | 2 |
| 2 | 1.0 | A6081 | V/A | RECESSED PAPER TOWEL DISPENSER, STAINLESS STEEL | 2 |
| 2 | 1.0 | A5215 | V/A | BRACKET, V/MOUNTING MOUNTING | 2 |
| 2 | 1.0 | A5222 | V/A | WALL BACKING | 2 |
| 2 | 1.0 | A6046 | V/A | NETWORK, DECORATIVE, WITH FRAME | 2 |
| 2 | 9.0 | F0255 | V/A | CHAIR, EASY | 18 |
| 2 | 1.0 | F2000 | V/A | BASKET, WASTEPAPER, ROUND, METAL | 2 |
| 2 | 1.0 | F3010 | V/A | BOARD, BULLETIN, 48" x 36" | 2 |
| 2 | 1.0 | F3050 | V/A | WHITEBOARD, 18" ERASE, 48"x36" | 2 |
| 2 | 1.0 | F3200 | V/A | CLOCK, BATTERY, 12" DIAMETER | 2 |
| 2 | 1.0 | M5050 | V/A | TELEVISION, FLAT PANEL, 52" | 2 |
| 2 | 1.0 | P-529 | V/A | SINK, SELF RIMMING, 36", W/ SINGLE HANDLE FAUCET | 2 |



| # of Bids | OTY/MB | JSN # | AI | DESCRIPTION | TOTAL QTY |
|-----------|--------|-------|-----|--|-----------|
| 1 | 2.0 | A1012 | V/V | TELEPHONE, WALL MTD. | 2 |
| 1 | 14.0 | A1030 | V/V | LOCKER, 2 TIER | 14 |
| 1 | 1.0 | A6075 | L/L | LIQUID SOAP DISPENSER, WALL MOUNTED | 1 |
| 1 | 1.0 | A6061 | L/L | RECTISS PAPER TOWEL DISPENSER, STAINLESS STEEL | 1 |
| 1 | 1.0 | A6215 | L/L | BACKET SUPPORT, MOUNTING, TV/ MONITOR | 1 |
| 1 | 1.0 | A6306 | L/L | SHOES, BLACK/OUT | 1 |
| 1 | 16.0 | F0225 | V/V | DINING CHAIR | 16 |
| 1 | 2.0 | F7937 | V/V | FOLDING TABLE, 72" x 24" | 2 |
| 1 | 1.0 | F0000 | V/V | WASTE RECEPTACLE | 1 |
| 1 | 1.0 | F3060 | L/L | WHITEBOARD, DRY ERASE, 24" x 24" | 1 |
| 1 | 1.0 | F3200 | V/L | CLOCK, WALL MOUNTED | 1 |
| 1 | 1.0 | K1562 | V/V | COFFEE MAKER | 1 |
| 1 | 2.0 | K4665 | V/V | OVEN, MICROWAVE, CONSUMER | 2 |
| 1 | 1.0 | M0510 | V/V | TELEVISION, FLAT PANEL, 52" | 1 |
| 1 | 1.0 | P-544 | L/L | DOUBLE BOWL SINK, S.S. W/ SINGLE LEVER SWING SPRINKLER | 1 |
| 1 | 2.0 | R7250 | V/V | REFRIGERATOR, FREEZER, 20 CUBIC FEET W/ ICE MAKER | 2 |

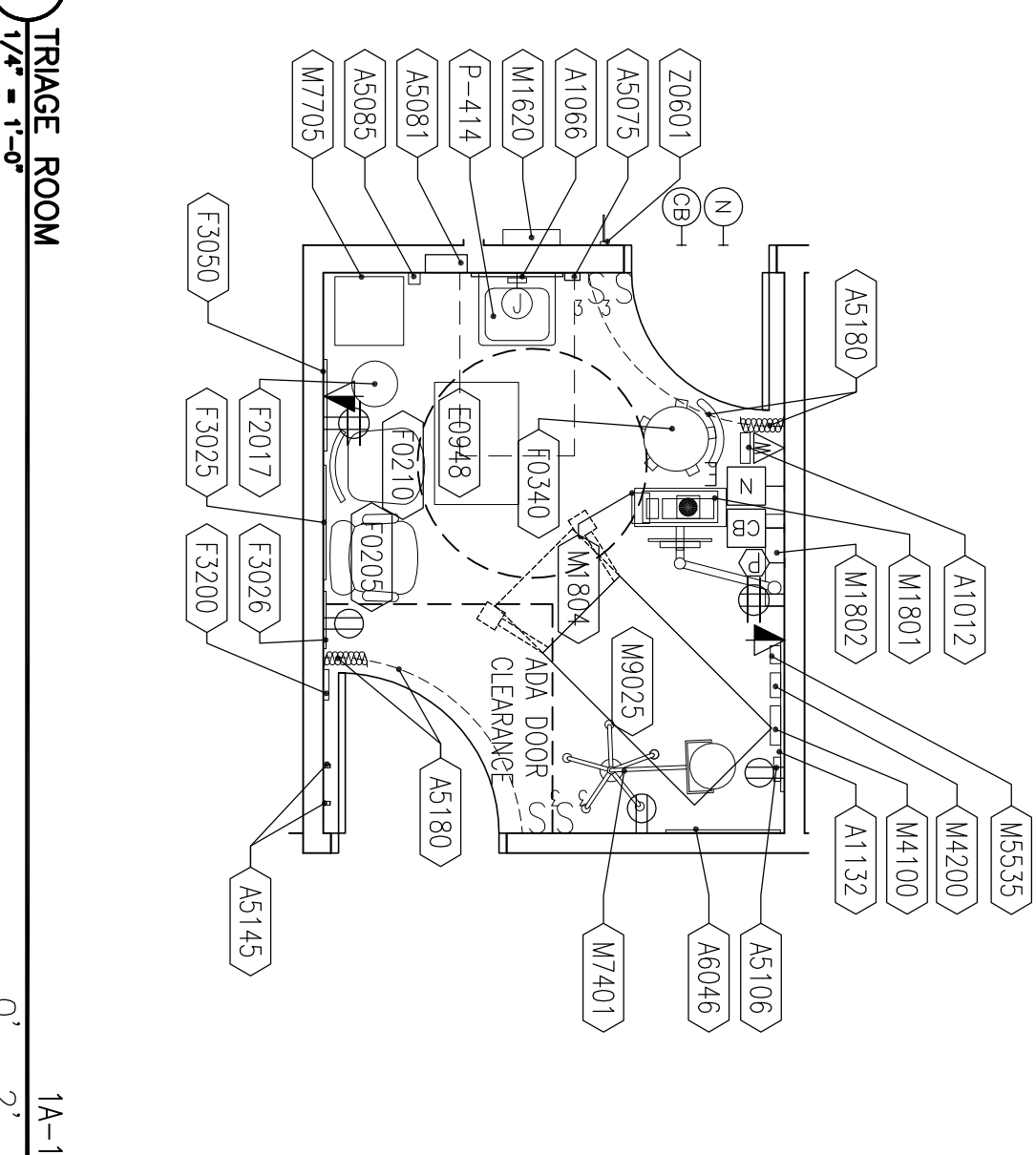


| # of Pkts | OTV# | JSN # | AI | DESCRIPTION | TOTAL QTY |
|----------------------|------|-------|-----|--|-----------|
| CLINICIANS' CUBICLES | | | | | |
| 1 | 200 | A1011 | V/V | TELEPHONE, DESK | 20 |
| 1 | 200 | E028P | V/V | SYSTEM WORK, COUNTER W/ BACK AND END PANELS AND OVERHEAD STORAGE CABINET | 20 |
| 1 | 200 | F1004 | V/V | PANELS AND OVERHEAD STORAGE CABINET, ALUMINUM | 20 |
| 1 | 200 | F0225 | V/V | CHAIR, SIDE, WITH ARMS | 20 |
| 1 | 200 | F0410 | V/V | CABINET, FILING, HALF HEIGHT, 2 DRAWER | 20 |
| 1 | 200 | M801 | V/V | COMPUTER, MICROPROCESSING, W/FLAT PANEL MONITOR | 20 |
| BOH CORRIDOR | | | | | |
| 1 | 100 | A1030 | L/L | LOCKER, 2 TIER | 10 |
| 1 | 200 | A5145 | V/V | HOOK, GARMENT, DOUBLE, SS, SURFACE MTD. | 40 |
| 1 | 40 | F2000 | V/V | BASKET, WASTEPEPER, ROUND, METAL | 20 |
| 1 | 200 | F2540 | V/V | STAINLESS MATERIALS HOLDING CONTAINER | 2 |
| 1 | 200 | F3010 | V/L | BOARD, BULLETIN, 48 X 36 | 2 |
| 1 | 200 | F3200 | V/L | CLOCK, BATTERY, 12" DIAMETER | 2 |
| 1 | 200 | M1840 | V/V | PRINTER/COPIER/FAX COMBINATION, COUNTER | 2 |

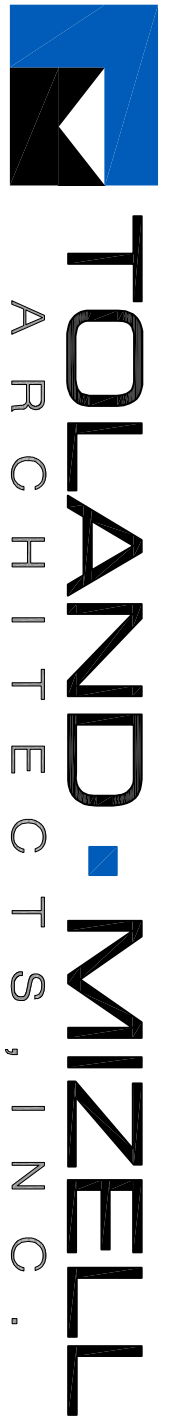



| # of Bins | QTY/ Bin | AI | DESCRIPTION | TOTAL QTY |
|-----------|----------|-------|--|-----------|
| 1 | 1.0 | A1012 | V/L TELEPHONE - WALL MTD | 1 |
| 1 | 1.0 | A1066 | V/L MIRROR, FLOAT GLASS WITH SS FRAME | 1 |
| 1 | 1.0 | A1132 | V/L RAIL, ACCESSORY MOUNTING | 1 |
| 1 | 1.0 | A5075 | V/L LIQUID SOAP DISPENSER, WALL MOUNTED | 1 |
| 1 | 1.0 | A5085 | V/L RECESSED PAPER TOWEL DISPENSER, STAINLESS V/L STEEL | 1 |
| 1 | 1.0 | A5085 | V/L DISPENSER, PAPER CUP, STAINLESS STEEL | 1 |
| 1 | 1.0 | A5106 | V/L SHAPES CONTAINER, WALL MOUNTED W/ GLOVE DISPENSER AND ACCESSORY RAIL | 1 |

| # of Bins | QTY/AM | JSN # | AI | DESCRIPTION | TOTAL QTY |
|-----------|--------|-------|-----|--|-----------|
| 1 | 1.0 | M550 | V/L | OTOSCOPE, WALL MTD. W/ TIP DISPENSER | 1 |
| 1 | 1.0 | M551 | V/L | OPHTHALMOSCOPE, WALL HUNG | 1 |
| 1 | 1.0 | M401 | V/V | LIGHT, EXAM, PORTABLE, STOUTLIGH | 1 |
| 1 | 1.0 | M705 | V/V | ENG MACHINE | 1 |
| 1 | 1.0 | M825 | V/V | TABLE, EXAMINATION, TREATMENT WITH CABINET | 1 |
| 1 | 1.0 | P-414 | L/L | JAUQUET, INTERCOS CHINA, WALL HUNG, W/ REMOTE CONTROL, GOODRICH PADLET | 1 |
| 1 | 1.0 | Z0601 | L/L | EXAM ROOM STATUS INDICATOR, 4 FLUOS | 1 |



| | | | | |
|---|-----|-------|---|---|
| 1 | 20 | A5145 | CUBICLE CURTAIN TRACK, WALL MTD. | 2 |
| 1 | 20 | A5180 | CUBICLE CURTAIN TRACK, SURFACE MOUNTED ON CEILING | 2 |
| 1 | 2.0 | A5180 | V/V CUBICLE CURTAIN | 2 |
| 1 | 1.0 | A6046 | V/V NETWORK, DECORATIVE, W/ FRAME | 1 |
| 1 | 1.0 | E9348 | V/V CART, GENERAL STORAGE, MOBILE | 1 |
| 1 | 1.0 | F0205 | V/V SIDE CHAIR, STRAIGHT WITH ARMS | 1 |
| 1 | 1.0 | F0210 | V/V SIDE CHAIR, STRAIGHT WITHOUT ARMS | 1 |
| 1 | 1.0 | F0340 | V/V STOOL, PHYSICIAN, PNEUMATIC, W/ BACK | 1 |
| 1 | 1.0 | F2017 | V/V STEP-ON 12" WASTE RECEPTACLE | 1 |
| 1 | 1.0 | F3025 | BULLETIN BOARD, 30"x24" | 1 |
| 1 | 1.0 | F3026 | V/L CALENDAR FRAME, 15"x 30"H | 1 |
| 1 | 1.0 | F3050 | V/L DRY ERASER BOARD, 24" X 24" | 1 |
| 1 | 1.0 | F3200 | V/L CLOCK, WALL MOUNTED | 1 |
| 1 | 1.0 | M1620 | V/V CHART HOLDER | 1 |
| 1 | 1.0 | M1801 | V/V COMPUTER MICROPROCESSING W/ FLAT PANEL MONITOR | 1 |
| 1 | 1.0 | M1802 | UNMOUNTED SINK, REB. MONITORATION, W/ KEYBOARD, TFX & MONITOR SUPPORT | 1 |
| 1 | 1.0 | M1804 | V/V ELECTRONIC SIGNATURE PAD | 1 |
| 1 | 1.0 | M1400 | V/L SPRING/COMBINATION, WALL MTD. | 1 |

[illegible]

 **TOLAND • MIZELL**
ARCHITECTS, INC.

| |
|--|
| |
|--|

| | | | |
|----------------------------------|--|---------------|--|
| Drawing Title | | Date | |
| EQUIPMENT PLANS- AMBULATORY CARE | | 10-22-13 | |
| Project Title | | Project No. | |
| VA ST. AUGUSTINE OPC | | 13016 | |
| FINAL SUBMISSION | | DRAWING NO. | |
| Approved Project Engineer | | A404 | |
| Building Number | | Dwg. XX of XX | |
| XXX | | XX | |
| Checked | | XX | |
| BY | | XX | |
| Drawn | | XX | |
| IS | | XX | |
| Location | | XX | |
| ST AUGUSTINE-TC | | XX | |