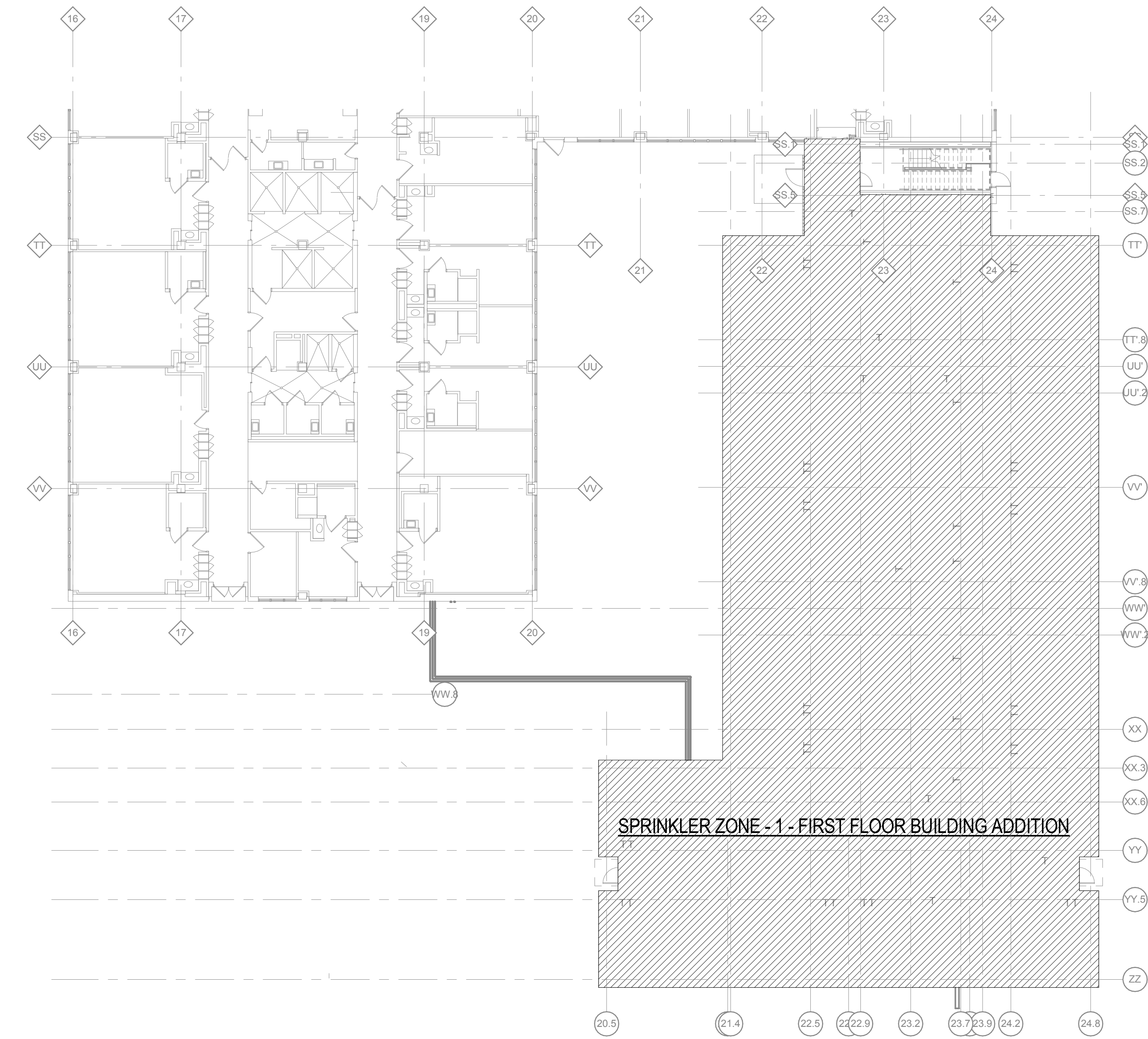
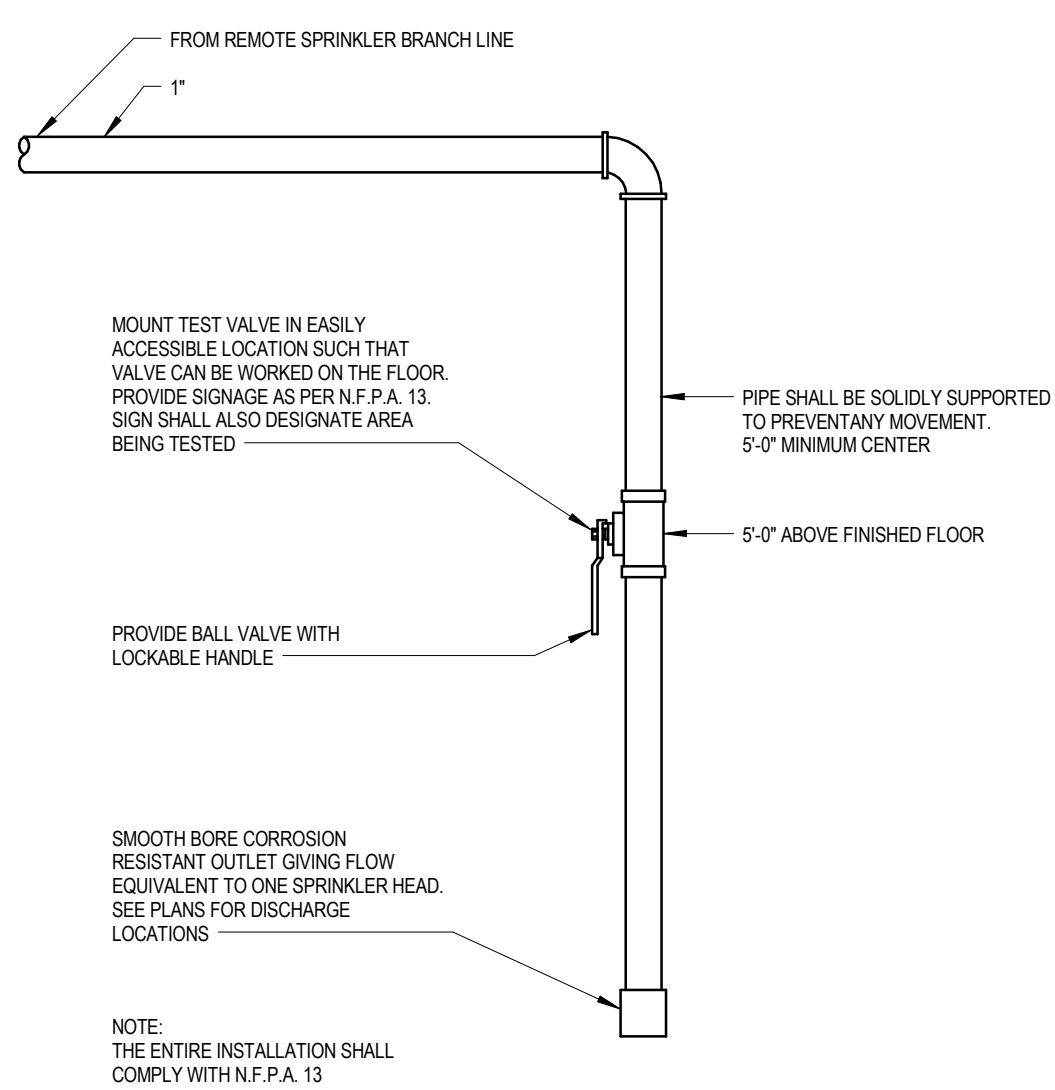


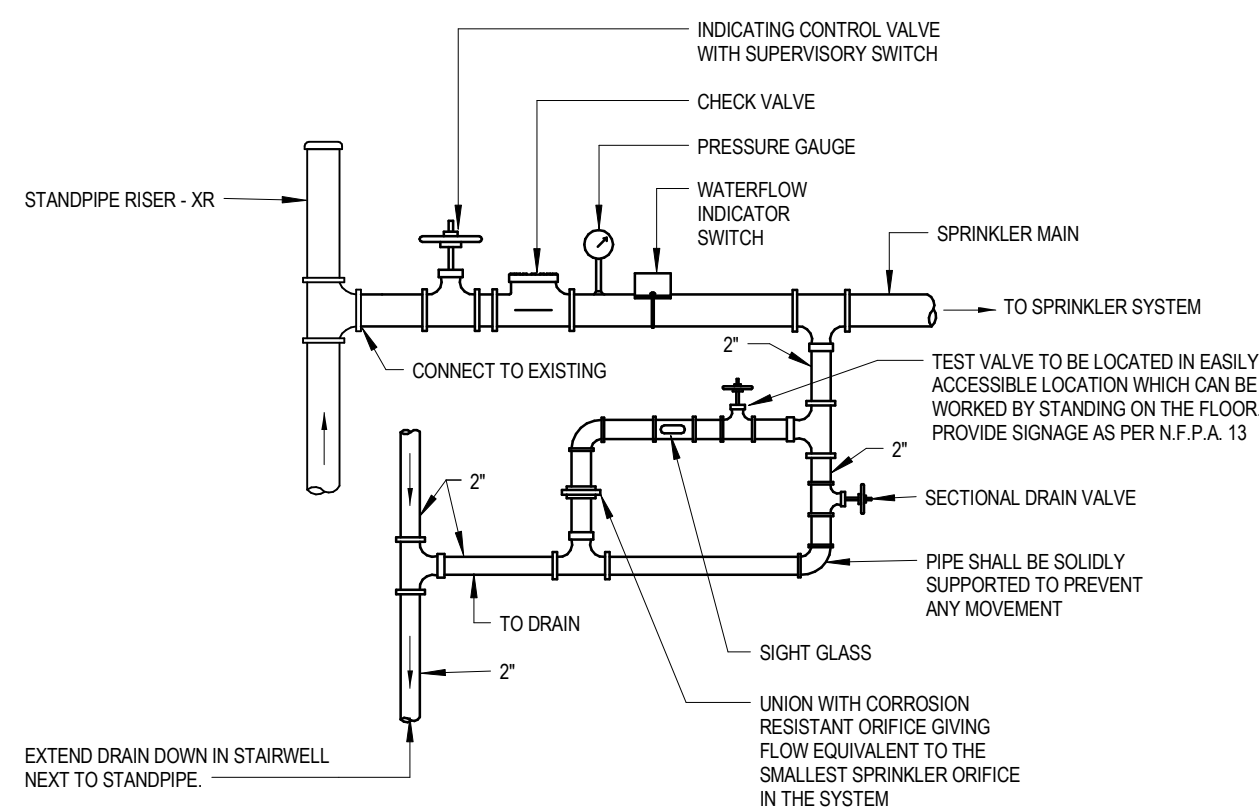
three inches = one foot
one and one half inch = one foot
one inch = one foot
three quarters inch = one foot
one half inch = one foot
three eighths inch = one foot
one quarter inch = one foot
one eighth inch = one foot



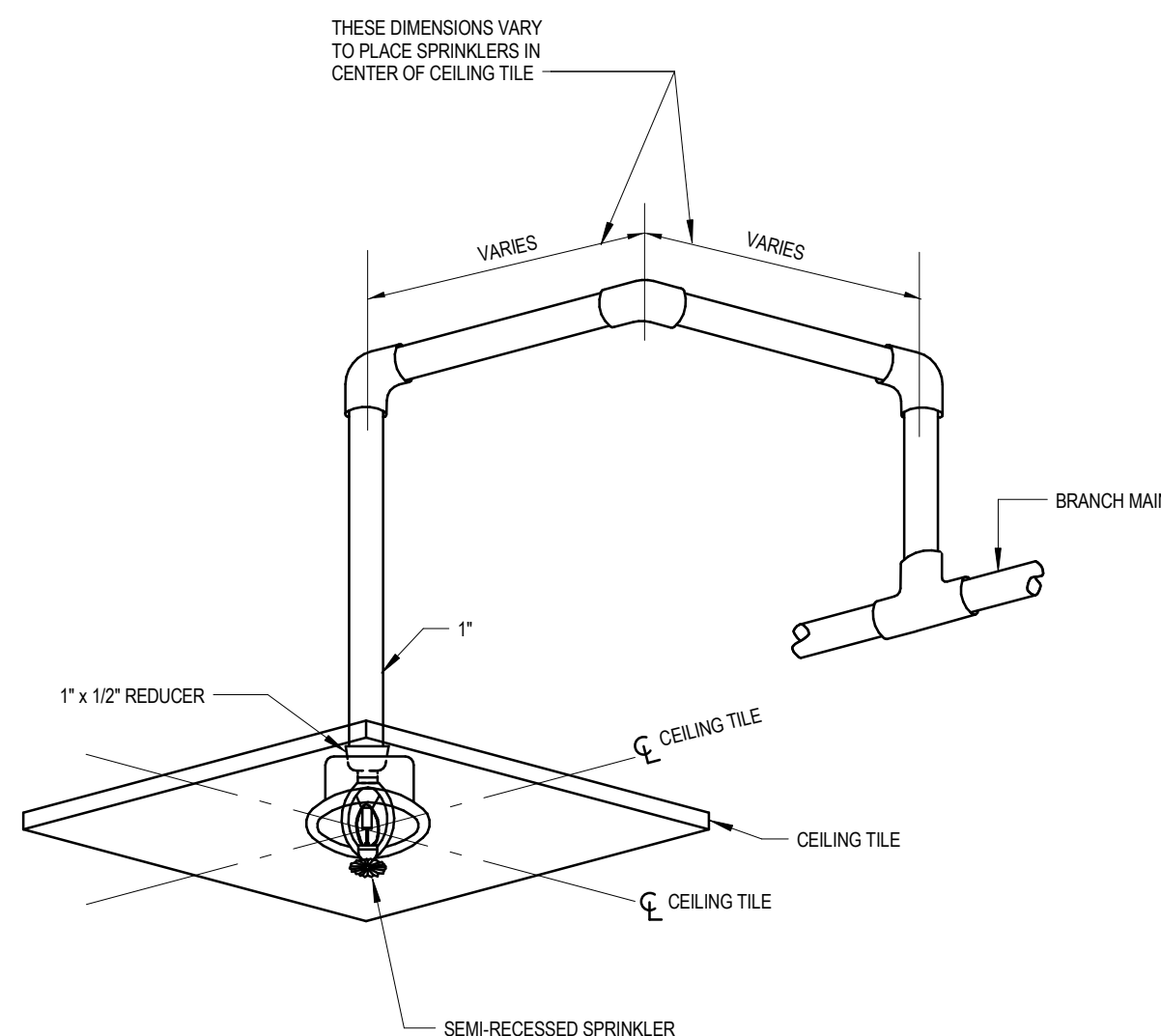
1 FIRE PROTECTION ZONE PLAN - FIRST FLOOR
1/16" = 1'-0"



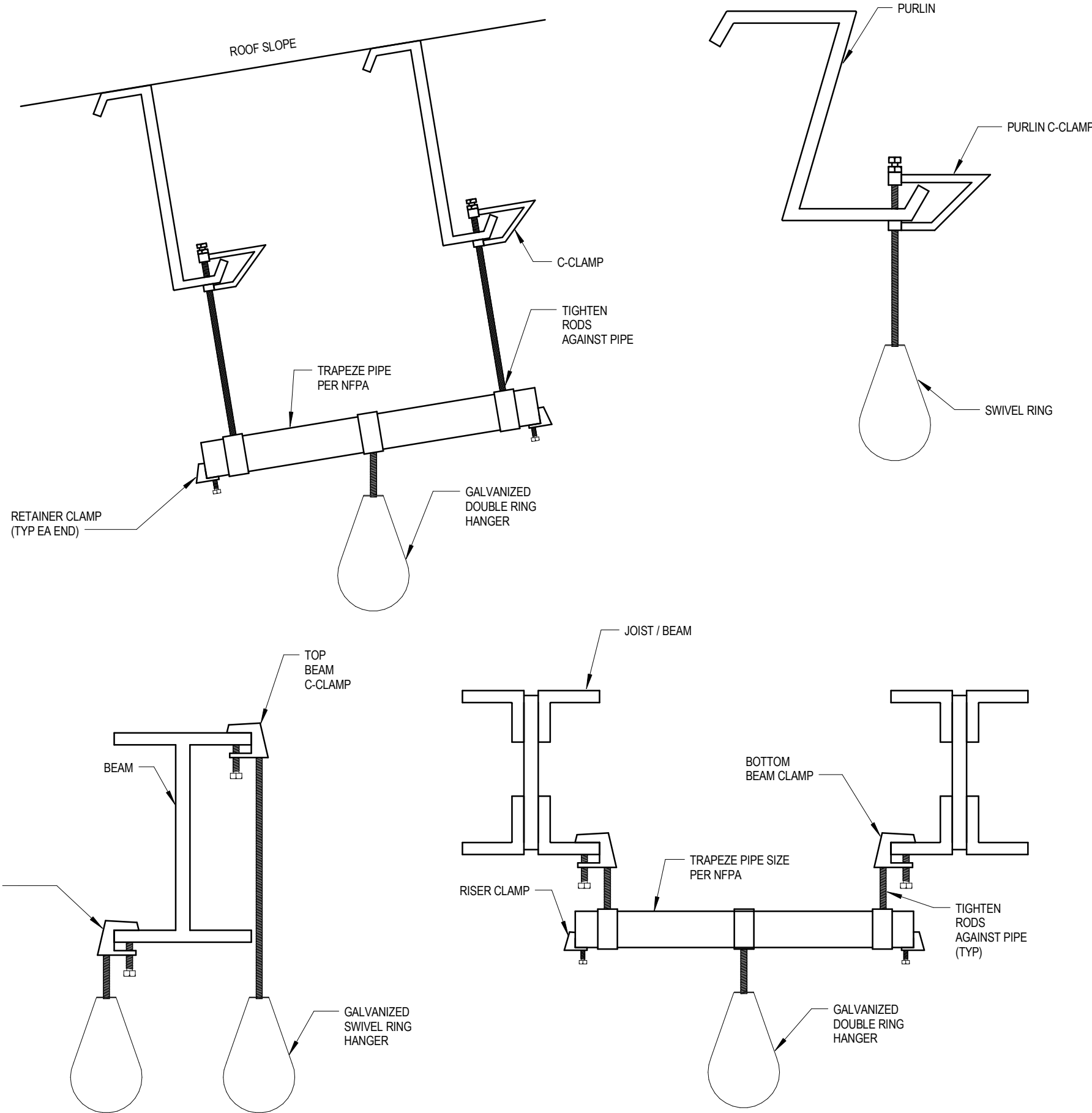
2 SPRINKLER INSPECTOR'S TEST DRAIN DETAIL
NTS



3 STANDPIPE CONNECTION DETAIL
NTS



4 TYPICAL SEMI-RECESSED SPRINKLER DETAIL
NTS



TYPICAL PIPE HANGER DETAIL

NOTE
FIRE PROTECTION CONTRACTOR SHALL INDICATE HANGER TYPE AND LOCATION OF ALL SWAY BRACING AND FLEXIBLE PIPE CONNECTIONS ON SPRINKLER SHOP DRAWINGS. INSTALLATION SHALL BE IN ACCORDANCE WITH NFPA 13

5 SWAY BRACING DETAIL
NTS

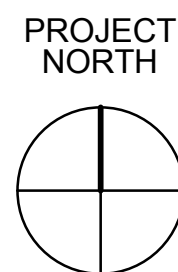
SPRINKLER HEAD LEGEND					
SYMBOL	MANUFACTURER OR APPROVED EQUAL	TYPE	MODEL	ORIFICE	TEMP. RATING (°F)
	VIKING	UPRIGHT W/ GUARD	MICROFAST MODEL M	1/2"	155°
	VIKING	SEMI-RECESSED, QUICK RESPONSE	HORIZON	1/2"	155°

FIRE PROTECTION SYMBOLS

	FIRE LINE
	DRAIN LINE
	SEMI-RECESSED SPRINKLER
	UPRIGHT SPRINKLER W/ GUARD
	ZONE CONTROL VALVE
	TAMPER SWITCH
	FIRE DEPARTMENT HOSE VALVE
	EXISTING TO REMAIN
	RISE
	DROP
	CAP
	KEYED NOTE DESCRIBING WORK TO BE DONE
	CONNECT TO EXISTING PIPING AT THIS POINT

FIRE PROTECTION GENERAL NOTES


- ALL WORK SHOWN IS NEW UNLESS INDICATED OTHERWISE.
- COORDINATE ALL WORK WITH OTHER TRADES AND EXISTING CONDITIONS PRIOR TO THE FABRICATION OR INSTALLATION OF ANY PIPING.
- THE DRAWINGS ARE DIAGRAMMATIC. THE CONTRACTOR MUST FIELD VERIFY ACTUAL CONDITIONS AT THE SITE PRIOR TO PROCEEDING WITH THE WORK. CONTRACTOR IS TO PROVIDE A COMPLETE SYSTEM INCLUDING ALL APPURTENANCES, VALVES, AND AUXILIARY DRAINS.
- ALL EXISTING SERVICES ARE SHOWN IN THEIR APPROXIMATE LOCATIONS.
- ALL NEW PIPING SHALL BE INSTALLED IN SUCH A WAY THAT IT DOES NOT HAMPER ACCESS TO NEW OR EXISTING VALVES, ACCESS DOORS OR EQUIPMENT.
- SPRINKLER PIPING SHALL BE HYDRAULICALLY DESIGNED BY THE SPRINKLER CONTRACTOR AND SHALL BE APPROVED BY ALL AUTHORITIES HAVING JURISDICTION. VELOCITIES OF WATER IN HYDRAULICALLY DESIGNED SPRINKLER PIPING SHALL NOT EXCEED TWENTY FEET PER SECOND.
- ALL SPRINKLER HEADS INSTALLED IN LAY-IN CEILINGS SHALL HAVE THE HEADS LOCATED IN THE CENTER OF TILES. IF FOR ANY REASON HEADS CANNOT BE LOCATED IN THE CENTER OF TILES, THEN THE ARCHITECT/ENGINEER SHALL BE CONTACTED FOR NEW LOCATIONS BEFORE INSTALLING ANY HEAD OR PIPING.
- CONTRACTOR SHALL INCLUDE IN HIS BID A WATER FLOW TEST/FIRE PUMP TEST. THE RESULTS OF WHICH SHALL BE USED TO PERFORM HYDRAULIC CALCULATIONS.
- ENTIRE SYSTEM SHALL BE INSTALLED IN ACCORDANCE WITH NFPA 13 2013 EDITION.
- ALL WORK SHALL BE STRICTLY COORDINATED AMONG ALL INDIVIDUAL CONTRACTORS BEFORE ANY WORK IS PERFORMED.
- DO NOT ROUTE PIPING THROUGH ELEVATOR SHAFT(S), ELEVATOR EQUIPMENT ROOM(S) & ELECTRICAL ROOMS, PIPING TO TERMINATE AT SPRINKLER HEAD.
- PIPES 2-1/2" & LARGER TO BE SCHEDULE 10 STEEL PIPE WITH GROOVED END PREP.
- PIPES 2" & SMALLER TO SCHEDULE 40 STEEL PIPE WITH THREADED END PREP OR AS NEEDED.
- PIPES TO BE SIZED PER HYDRAULIC CALCULATIONS.
- VERIFY ALL CEILING HEIGHTS AT SITE PRIOR TO INSTALLATION. REFER TO ARCHITECTURAL DRAWINGS FOR LOCATIONS OF CEILINGS AND CEILING TYPES.
- IN ROOMS WHICH ARE INDICATED AS BEING MECHANICAL AND ELECTRICAL ROOMS, THE SPRINKLER CONTRACTOR SHALL COORDINATE THE LOCATION OF HIS PIPING AND SPRINKLER HEADS TO AVOID INSTALLATION OVER ELECTRICAL PANELS OR EQUIPMENT. PROVIDE ADDITIONAL SPRINKLER HEADS AS NECESSARY, AT NO ADDITIONAL COST TO THE OWNER. REFER TO HVAC AND ELECTRICAL DRAWINGS.
- DESIGN DENSITIES: A. LIGHT HAZARD - 10/1500 ALL AREAS. B. ORDINARY HAZARD - 15/1500 - STORAGE / MECHANICAL ROOMS.
- FIRE PROTECTION HYDRAULIC CALCULATIONS FOR AUTOMATIC SPRINKLER SYSTEMS SHALL INCORPORATE A MINIMUM 10% SAFETY FACTOR.
- PRESSURE TEST OF THE AUTOMATIC SPRINKLER SYSTEM SHALL BE WITNESSED BY THE FIRE DEPARTMENT UNLESS SPECIFICALLY WAIVED. TWO (2) WEEKS WRITTEN ADVANCE NOTICE OF TEST SHALL BE GIVEN.
- FIRE PROTECTION CONTRACTOR SHALL COORDINATE HIS WORK WITH MECHANICAL, ELECTRICAL AND ALL OTHER DISCIPLINES TO AVOID INTERFERENCES PRIOR TO FABRICATION OF ANY PIPE. INTERFERENCES SHALL INCLUDE ROOF OPENINGS, BUS DUCTS, GANGED CONDUIT, DUCT, RUNS, ETC.
- ALL PIPE PENETRATIONS THROUGH FLOORS OR WALLS SHALL BE SLEEVED AND SEALED TO MAKE WATERTIGHT AND MAINTAIN FIRE RATINGS. CONTRACTOR TO PROPERLY CLEAN AND SEAL FULL THICKNESS OF THE PENETRATION WITH AN APPROVED FIRE STOP SYSTEM OF EQUAL OR GREATER FIRE RESISTANCE.
- ALL VALVE SUPERVISORY SWITCHES AND WATER FLOW SWITCHES SHALL BE PROVIDED AND INSTALLED BY THE FIRE PROTECTION CONTRACTOR AND WIRED BY THE ELECTRICAL CONTRACTOR.
- FIRE PROTECTION CONTRACTOR SHALL BE CERTIFIED BY STATE OF VIRGINIA FOR SPRINKLER SYSTEM INSTALLATION.
- ENTIRE SYSTEM SHALL BE INSTALLED IN ACCORDANCE WITH VA FIRE PROTECTION DESIGN MANUAL - SEVENTH EDITION - SEPTEMBER 2015.
- SPRINKLER SYSTEM TO BE INSTALLED TO ACCOMMODATE SYSTEM DRAINAGE, CONTRACTOR TO PROVIDE ALL AUXILIARY DRAINS AS NECESSARY.
- CONTRACTOR TO PROVIDE 14-DAT NOTICE TO VA FOR ALL SHUTDOWNS.




FULLY SPRINKLERED
BID DOCUMENTS

Revisions:		CONSULTANTS:		SEAL 		ARCHITECTS/ENGINEERS: 6587 Hamilton Avenue Pittsburgh, Pennsylvania 15206 Ph: 412.287.7333 Fax: 412.287.7334 www.ae-works.com AE Works Project Number: 13030		Drawing Title FIRE PROTECTION - SYMBOLS, NOTES & DETAILS		Project Title: H.H. MCGUIRE VAMC - CONSTRUCT SPINAL CORD ENHANCEMENT CENTER		Project Number 652 - 314		Office of Construction and Facilities Management 	
Approved: Project Director		Location: 1201 Broad Rock Boulevard, Richmond, VA 23249		Building Number 500		Date: 09/11/2017		Checked: MEW		Drawn: MEW		Drawing Number F001			


[illegible]

ARCHITECTS/ENGINEERS:	
 AE WORKS	6587 Hamilton Avenue Pittsburgh, Pennsylvania 15206 Ph: 412.287.7333 Fax: 412.287.7334 www.ae-works.com AE Works Project Number: 13030

Project Title: H.H. MCGUIRE VAMC - CONSTRUCT SPINAL CORD ENHANCEMENT CENTER		
Location: 1201 Broad Rock Boulevard, Richmond, VA 23249		
Date: 09/11/2017	Checked: MEW	Drawn: MEW

Project Number 652 - 314	<div> <div>Office of Construction and Facilities Management</div> <div>  <div>Department of Veterans Affairs</div> </div> </div>
Building Number 500	
Drawing Number F101	

PROJECT
NORTH



FULLY SPRINKLERED BID DOCUMENTS