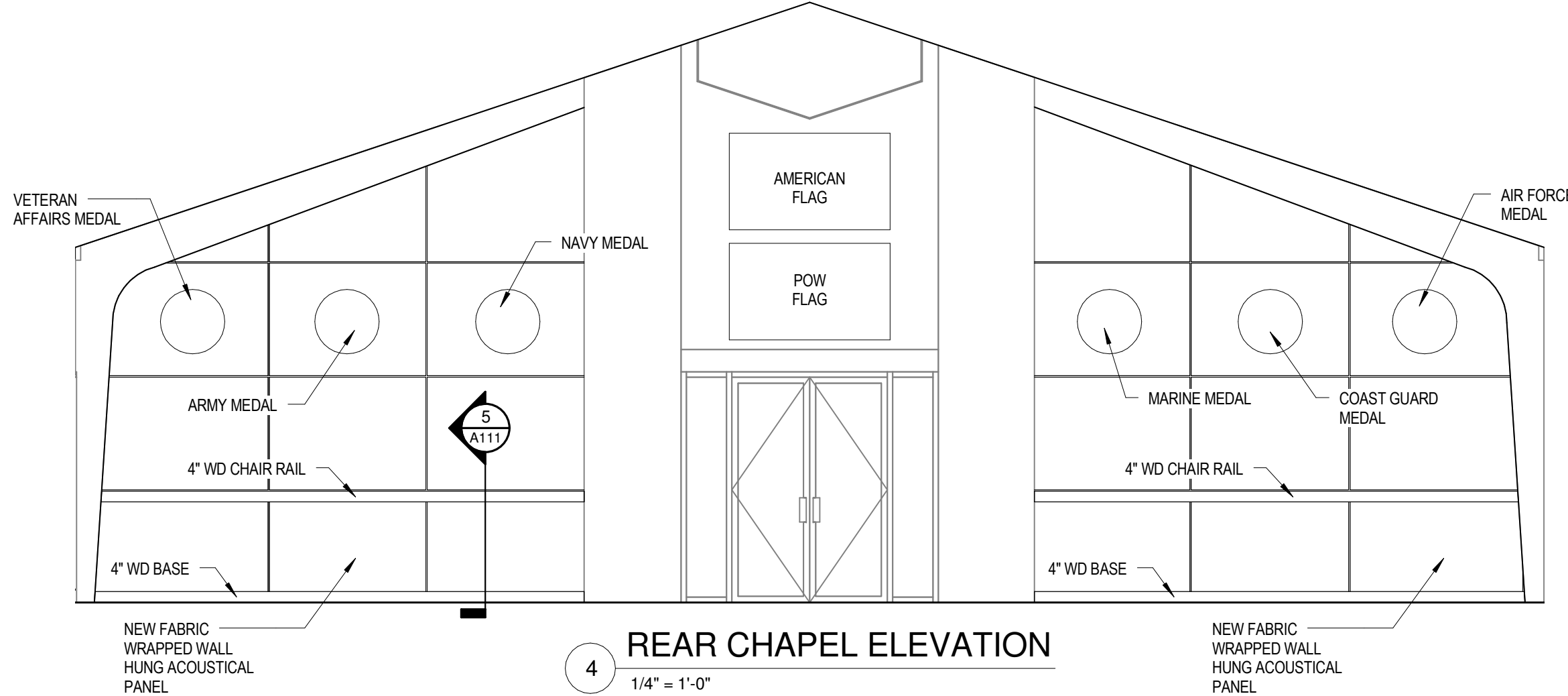
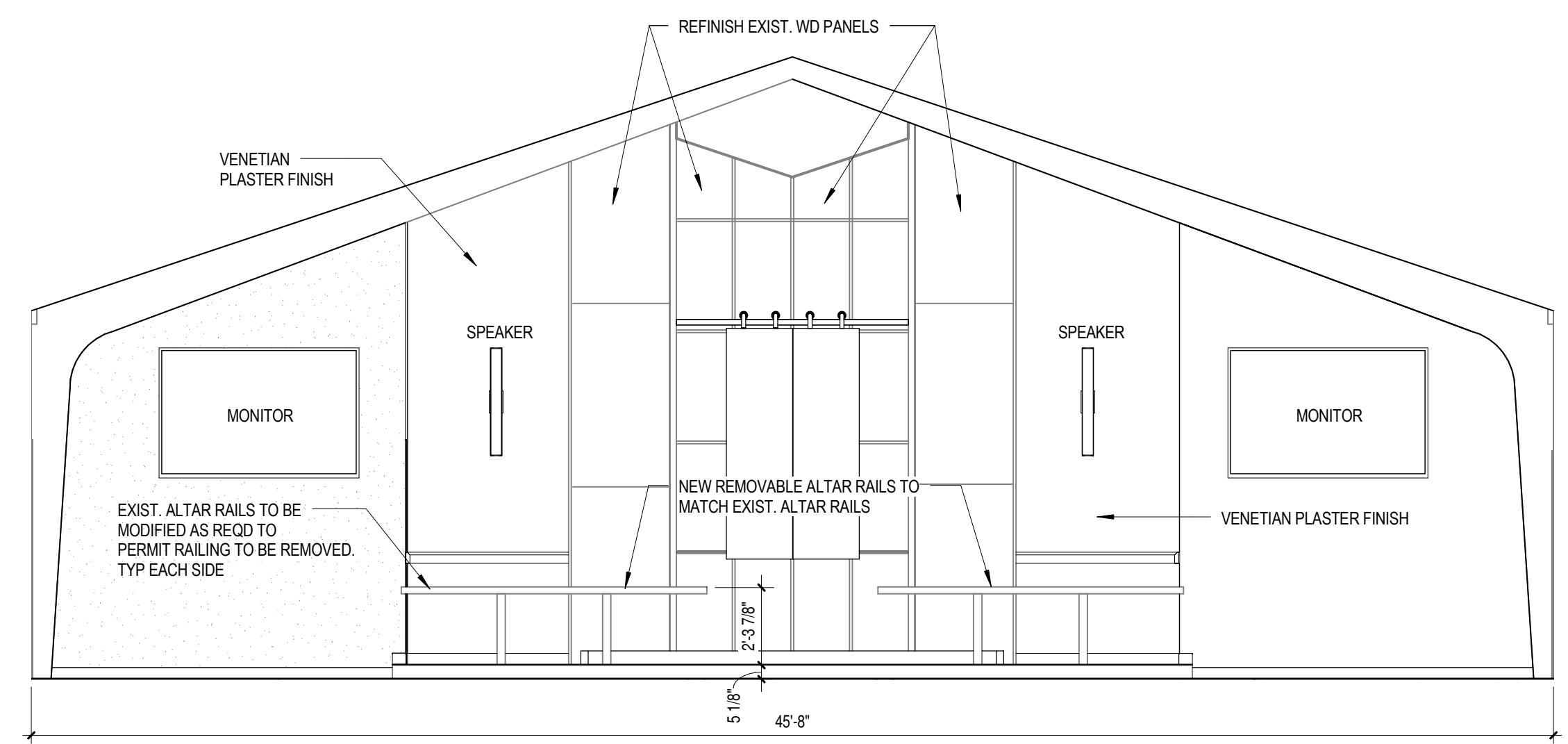
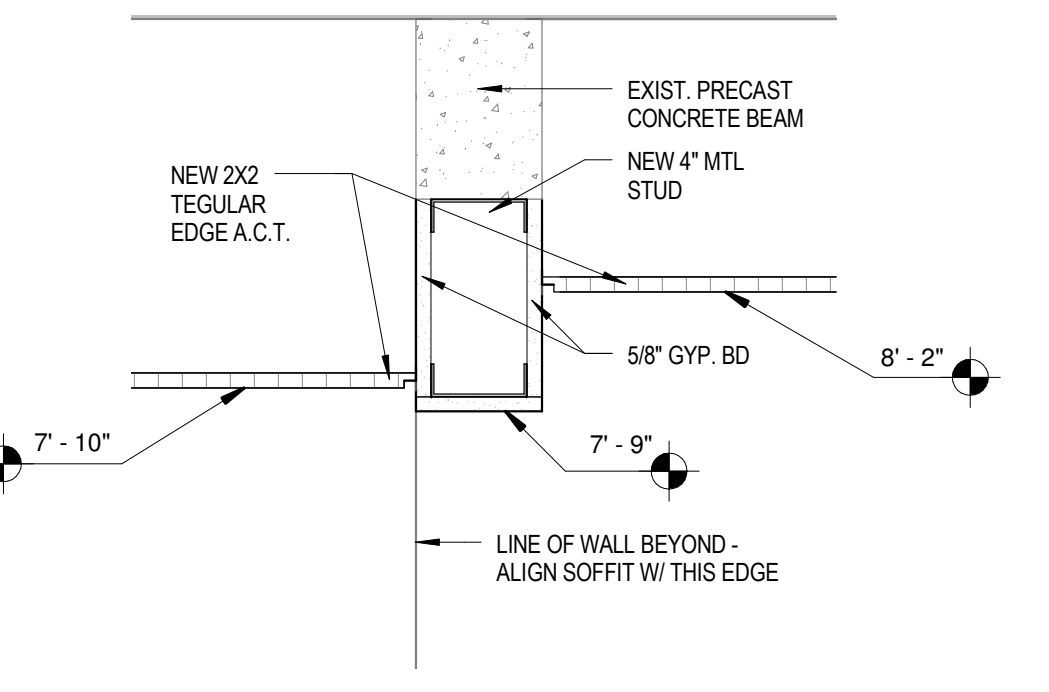
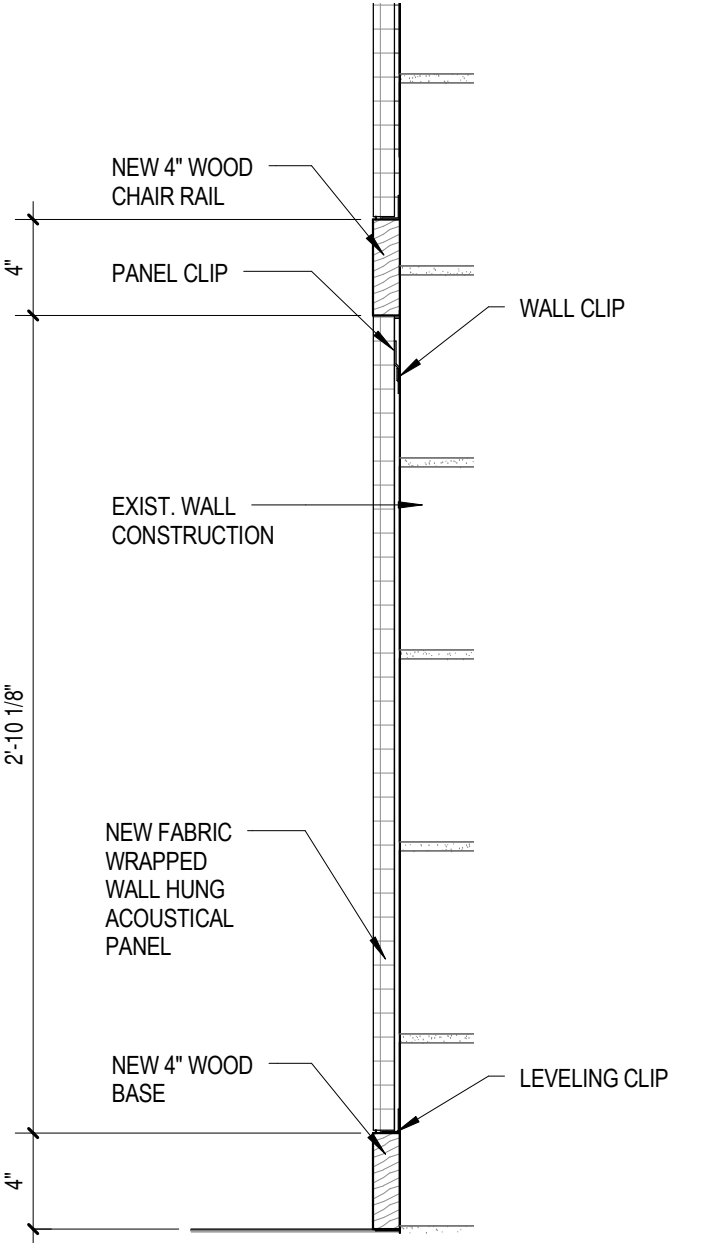


GENERAL NOTE:
1. MAXIMIZE CEILING HEIGHTS. COORDINATE WITH MECHANICAL, ELECTRICAL, AND SPRINKLER CONTRACTOR FOR MINIMUM DEPTH REQUIRED FOR DIFFUSERS, LAY-IN LIGHT FIXTURES, AND SPRINKLER HEADS.



NOTE: CONTRACTOR TO INSTALL OWNER PROVIDED MEDALS AND FLAGS. COORDINATE MOUNTING HARDWARE WITH ACOUSTICAL PANEL SYSTEM



GENERAL REFLECTED CEILING NOTES	
1. ALL SUSPENDED ACOUSTICAL CEILING ARE TO BE CENTERED IN SPACES WITH PANELS CUT TO EQUAL SIZE ON OPPOSITE SIDES OF CEILING AND TO MINIMIZE CUTS THAT ARE 6" OR LESS FROM EDGE OF TILE. TYP. U.N.O.	1. DETAILS, LEGENDS AND NOTES SHOWN ON THIS DRAWING ARE APPLICABLE TO ALL OTHER REFLECTED CEILING PLANS EVEN IF NOT SHOWN ON THOSE SHEETS.
2. CENTER ALL LIGHT FIXTURES, HVAC DIFFUSERS, AND SPRINKLERS IN RESPECTIVE PANELS. TYP. U.N.O. SEE ELECTRICAL DRAWINGS FOR FIXTURE TYPES, SIZES AND ADDITIONAL INFORMATION.	2. CONTRACTOR SHALL COORDINATE ALL ARCHITECTURAL ELEMENTS WITH MEP, STRUCTURAL AND ALL OTHER DISCIPLINES.
4. SEE FINISH SCHEDULES AND DRAWINGS AS APPLICABLE FOR ADDITIONAL INFORMATION REGARDING CEILING.	
6. ALL SOFFIT, FASCIA AND BULKHEAD DIMENSIONS SHOWN ON REFLECTED CEILING PLAN ARE FINISH TO FINISH, U.N.O.	
7. COORDINATE CEILING AS SHOWN IN REFLECTED CEILING PLANS WITH ALL OTHER CONTRACT DOCUMENTS.	
9. ALL ATTIC ACCESS HATCHES IN RATED CEILING ASSEMBLIES SHALL BE RATED AND INSTALLED TO MAINTAIN CEILING ASSEMBLY RATINGS.	
11. SEE RCP AND CEILING DETAILS FOR SPECIFIC CEILING AND BULKHEAD HEIGHTS AND ADDITIONAL INFORMATION.	

CEILING LEGEND			
ACT-1	ACOUSTICAL CEILING TILE 2X2 GRID		RAB 2x2 LED LAY-IN 4000K 30W FIXTURE
GB-1	GYPSUM BOARD ON FRAMING		NDR 5" LED RECESSED DIRECTIONAL FIXTURE
			PENDANT SPOT LIGHT
			PENDANT
			LITHONIA LED EXIT SIGN
			LITHONIA LED BATTERY UNIT
			MITSUBISHI ELECTRIC 2X2 HVAC DIFFUSER

CONSULTANT

ARCHITECT/ENGINEER OF RECORD

BEERS + HOFFMAN
 55 North Water Street
 Litzitz, Pennsylvania 17543
 P: (717) 625-0400
 F: (717) 625-0402
 815 Cumberland Street
 Lebanon, Pennsylvania 17042
 P: (717) 275-7774
 www.beersid.com

STAMP

Office of
Construction
and Facilities
Management

VA U.S. Department
of Veterans Affairs

Drawing Title
**CEILING PLAN AND
INTERIOR ELEVATIONS**

Approved: Project Director

Phase
DESIGN DEVELOPMENT

FULLY SPRINKLERED

Project Title
**CHAPEL
RENOVATIONS**

Location
VAMC LEBANON, PA

Issue Date

Checked
JC

Drawn
HL

Project Number
595-14-105

Building Number
106

Drawing Number
A111