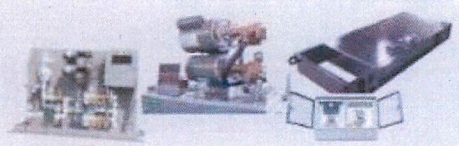

**PRYCO, INC.**
**STANDARD DAY TANKS - DOUBLE WALL**

[Home](#) [Products](#) [Sales Support](#) [Engineering and drawings](#) [Search](#) [Contact Us](#)

## Dimensions and Drawings

Other Day Tank Designs

[Manual Tanks](#)
[Standard Tanks](#)
[Trim Tanks](#)

 Other Standard Tanks  
Specifications and  
Chart Drawing

[Single Wall Tanks](#)

or

[Select By Size](#)

 PY25ULDW with several options  
including:

- 700 - FCM
- 295 - Leak Detector - D/W

 The enclosure on the side houses  
motor starters.

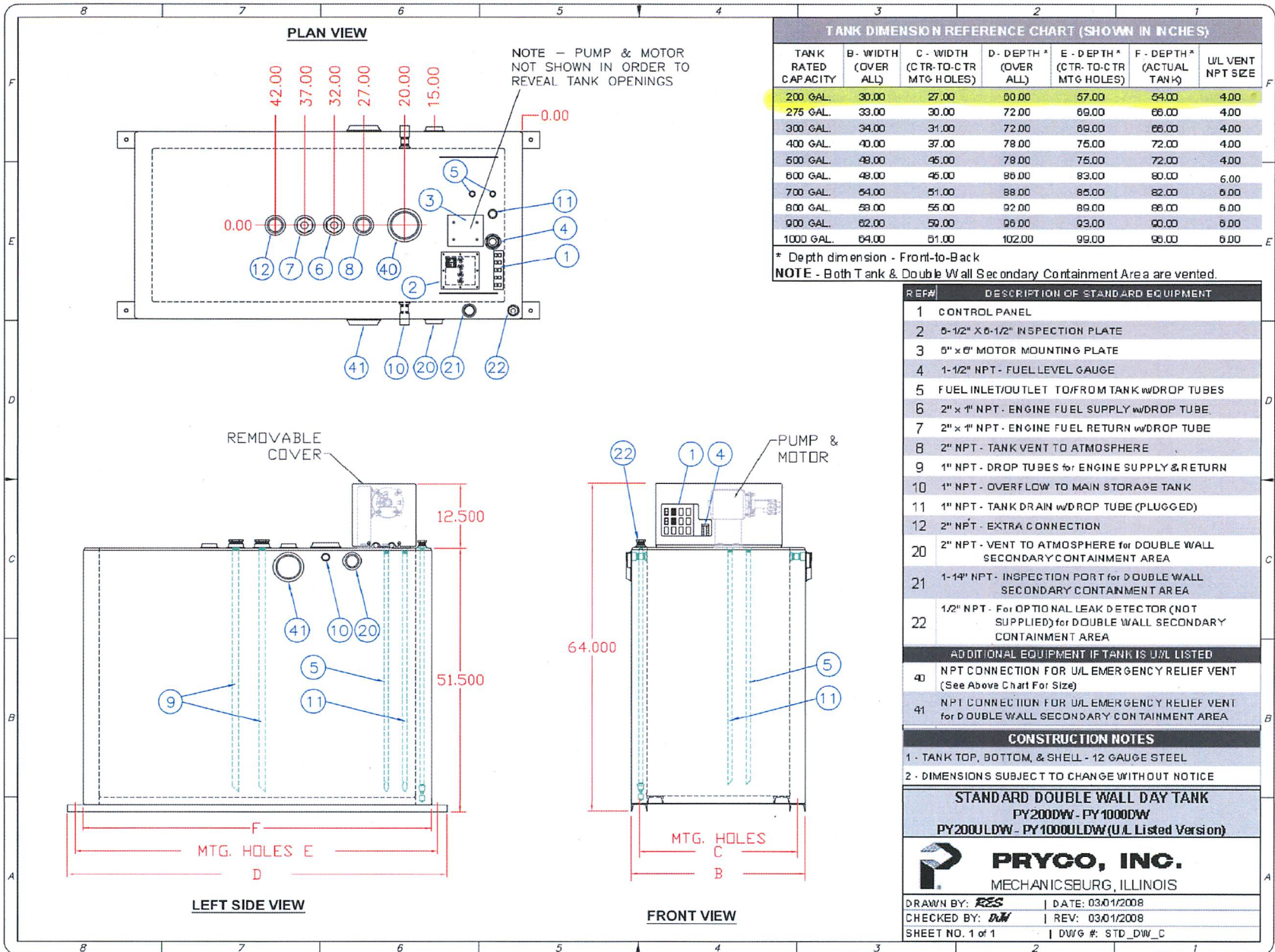
Tank size (capacity) is measured in U.S. Gallons. All dimensions are in inches and weights are shown in US pounds.

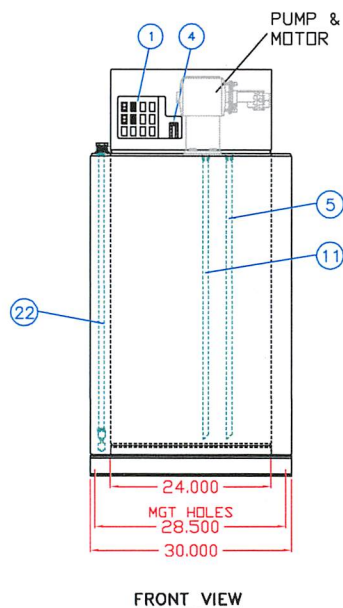
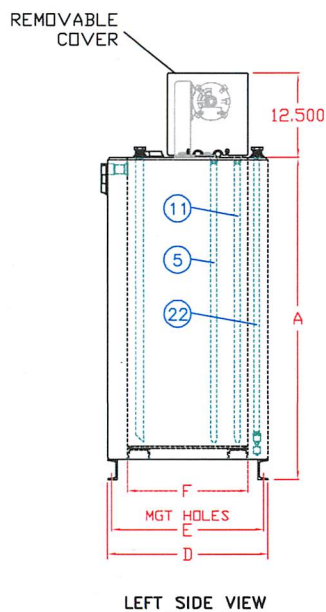
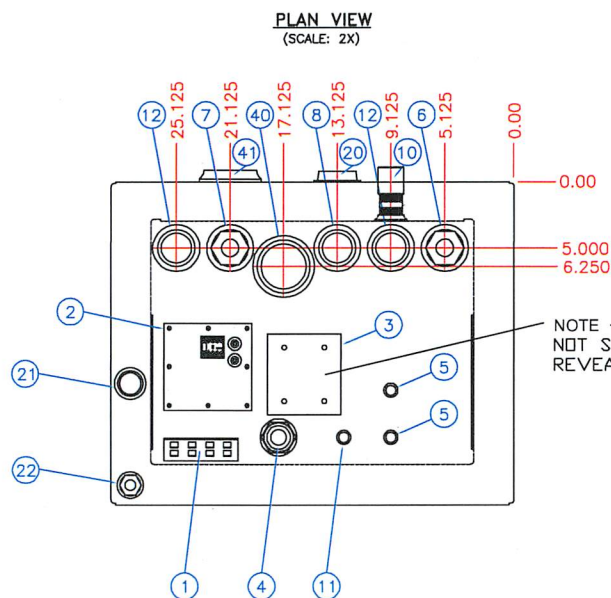
TANK SIZE	TANK + LEGS DIMENSIONS			DESIGN LISTING	MODEL NUMBER	TANK WEIGH [3]	U/L VENT SIZE	TANK DRAWING	RUPTURE BASIN [4]											
	WIDTH	DEPTH [1]	HEIGHT [2]						150% TANK CAP.	200% TANK CAP.										
										WEIGHT [5]	DWG									
5	30	14	22.5	Basic	PY5DW	165	n.a.	Call Factory	NOTE 150% Rupture Basins not available for Double Wall Day Tanks	Call Factory	Call Factory									
				U/L	PY5ULDW	170	2"													
10	30	18	17	Basic	PY10DW	213	n.a.	10-25 Gal. Tank Drawings												
				U/L	PY10ULDW	217	2"													
15	30	18	23	Basic	PY15DW	250	n.a.	Click <a href="#">Here</a>												
				U/L	PY15ULDW	255	2"													
25	30	18	28	Basic	PY25DW	281	n.a.	50-150 Gal. Tank Drawings												
				U/L	PY25ULDW	286	2"													
50	30	24	35	Basic	PY50DW	367	n.a.					Click <a href="#">Here</a>								
				U/L	PY50ULDW	371	2"													
60	30	24	43	Basic	PY60DW	420	n.a.						200-1000 Gal. Tank Drawings							
				U/L	PY60ULDW	428	3"													
75	30	24	48	Basic	PY75DW	454	n.a.							Click <a href="#">Here</a>						
				U/L	PY75ULDW	461	3"													
100	30	30	48	Basic	PY100DW	502	n.a.								Click <a href="#">Here</a>					
				U/L	PY100ULDW	509	3"													
150	30	42	48	Basic	PY150DW	604	n.a.									Click <a href="#">Here</a>				
				U/L	PY150ULDW	611	3"													
200	30	60	51.5	Basic	PY200DW	882	n.a.										Click <a href="#">Here</a>			
				U/L	PY200ULDW	895	4"													
275	33	72	51.5	Basic	PY275DW	1111	n.a.											Click <a href="#">Here</a>		
				U/L	PY275ULDW	1124	4"													
300	34	72	51.5	Basic	PY300DW	1124	n.a.												Click <a href="#">Here</a>	
				U/L	PY300ULDW	1137	4"													
400	40	78	51.5	Basic	PY400DW	1285	n.a.													Click <a href="#">Here</a>
				U/L	PY400ULDW	1297	4"													

P.O. Box 108, Mechanicsburg, IL 62545

DT-14

Phone - 217 / 364-4467 Fax - 217 / 364-4494



**TANK DIMENSION REFERENCE CHART (SHOWN IN INCHES)**

TANK RATED CAPACITY	A - HEIGHT (TANK)	D - DEPTH * (OVERALL)	E - MTG HOLES (CTR-TO-CTR)	F - DEPTH * (INNER TANK)	U/L VENT NPT SIZE (See Note)
50 GAL	35.00	24.00	22.50	18.00	2.00
60 GAL	43.00	24.00	22.50	18.00	3.00
75 GAL	48.00	24.00	22.50	18.00	3.00
100 GAL	48.00	30.00	28.50	24.00	3.00
150 GAL	48.00	42.00	40.50	36.00	3.00

\* Depth dimension - Front-to-Back

**NOTE** - Both Day Tank & Double Wall Secondary Containment Area are vented

REF#	DESCRIPTION OF STANDARD EQUIPMENT
1	CONTROL PANEL
2	6-1/2" X 6-1/2" INSPECTION PLATE
3	6" x 6" MOTOR MOUNTING PLATE
4	1-1/2" NPT - FUEL LEVEL GAUGE
5	FUEL INLET/OUTLET TO/FROM TANK w/DROP TUBES
6	2" x 1" NPT - ENGINE FUEL SUPPLY w/DROP TUBE
7	2" x 1" NPT - ENGINE FUEL RETURN w/DROP TUBE
8	2" NPT - TANK VENT TO ATMOSPHERE
9	1" NPT - DROP TUBES for ENGINE SUPPLY & RETURN
10	1" NPT - OVERFLOW TO MAIN STORAGE TANK
11	1/2" NPT - TANK DRAIN w/DROP TUBE (PLUGGED)
12	2" NPT - EXTRA CONNECTION
20	2" NPT - VENT TO ATMOSPHERE for DOUBLE WALL SECONDARY CONTAINMENT AREA
21	1-1/4" NPT - INSPECTION PORT for DOUBLE WALL SECONDARY CONTAINMENT AREA
22	1/2" NPT - For OPTIONAL LEAK DETECTOR (NOT SUPPLIED) for DOUBLE WALL SECONDARY CONTAINMENT AREA

**ADDITIONAL EQUIPMENT IF TANK IS U/L LISTED**

40	NPT CONNECTION FOR U/L EMERGENCY RELIEF VENT (See Above Chart For Size)
41	NPT CONNECTION FOR U/L EMERGENCY RELIEF VENT for DOUBLE WALL SECONDARY CONTAINMENT AREA

**CONSTRUCTION NOTES**

- 1 - TANK TOP, BOTTOM, & SHELL - 12 GAUGE STEEL
- 2 - DIMENSIONS SUBJECT TO CHANGE WITHOUT NOTICE

**STANDARD DOUBLE WALL DAY TANK**  
**PY50DW - PY150DW**  
**PY50ULDW - PY150ULDW (U/L Listed Version)**



**PRYCO, INC.**  
 MECHANICSBURG, ILLINOIS

DRAWN BY: *RES* | DATE: 03/01/2008CHECKED BY: *DW* | REV: 03/01/2008

SHEET NO. 1 of 1 | DWG #: STD\_DW\_B

**ELECTRICAL  
GENERAL CATEGORIES**

Alarms & Sws - Low Level
Alarms & Sws - High Level
Alarms & Sws - High/Low
Alarm Horns
Circuit Breakers
Float Switches & Valves
Heates & Thermostats
Leak Detectors
Manual Control Switches
Pilot Lights
Pump Transfer Sws
Remote Fill Control

**DUPLEX PUMP & MOTORS with PUMP TRANSFER SWITCHES  
for PRYCO FUEL SYSTEMS**

A Duplex Fuel Supply System (427 series) adds an additional pumping sub-system to the first pump and motor that is installed on a day tank, sub-base tank, remote pumping unit, or other platform. A duplex system provides:

- \* Redundant Back-up,
- \* Greater Pumping Capacity (in case a single pump cannot keep up with the demands of in-tank fuel draw down,
- \* Configuration Flexibility, and
- \* Reduction of run time (in the case of 427A and 427B) of the first installed sub-system.

The three duplex systems described here have at least one thing in common, each have a **"LEAD"** pumping sub-system and a **"LAG"** pumping sub-system.

- \* The **LEAD** is always the one that is activated first when fuel is required from the main storage tank, and
- \* The **LAG** is next if the lead cannot keep up with the demand.

NOTE - Option #427 "hard" assigns the **LEAD** to the first pumping sub-systems (physically the bottom in the stacking arrangement) and the **LAG** to the second (the top pump/motor).

Options 427A and 427B switch the pumping sub-systems "logically" into a soft, or temporary, Lead/Lag assignment. 427A does this automatically and 427B is manual switching (see below).

**DUPLEX (Second Standard) PUMP and MOTOR ASSEMBLY**

A second 2 GPM pump, a Thermal Protected motor (1/3 HP, 115vac, 1 PH, 60 Hz) and a second float switch.

**427**

The first pump-motor (always the "lead") begins operating at 86% of usable fuel capacity; the second pump-motor (always the "lag") begins operating to assist the lead pump when fuel drops to 82% of usable fuel capacity. Both pump-motors shut off at 100% capacity.

**AUTOMATIC TRANSFER SWITCH**

**427A**

A switching system to automatically alternate each pump-motor (of option #427) into the lead starting position. (At the 82% and lower levels, both will operate.) Includes: Option # 427, a pump "RUN-OFF-AUTO" mode selector switch, and a "Pump Running" amber light for each pump-motor

**MANUAL TRANSFER SWITCH**

**427B**

A switching system to manually alternate each pump-motor (of option 427) into the lead starting position. (At the 82% and lower levels, both will operate.) Includes: Option #427, a manual transfer switch, and a motor run-time meter included for each pump-motor.

**PUMPS**  
**GENERAL CATEGORIES**

- Bronze Pumps
- Cast Iron Pumps
- Hand Pumps**
- Duplex Pump/Motor

**HAND PUMPS**

**461**



**HAND PUMP - PISTON TYPE**

- 10 strokes per gallon
- Equipped with TFE piston cups
- Operating temperature of -25° to 200°F
- Dual action - dispenses on each stroke
- Self-priming w/ up to 13 ft of lift

Hand pump check valve and motor pump check valve included.

**462**



**HAND PUMP - ROTARY TYPE**

- High flow (only 10 rotations per gallon, 2 per liter)
- All cast-iron housing with stainless steel shaft & strainer
- Malleable iron pump handle with rotating grip for ease of use
- Self-adjusting spring-loaded carbon vanes give smooth operation.
- Internal check valve allows immediate dispensing
- Built-in stainless steel strainer

Hand pump check valve and motor pump check valve included.