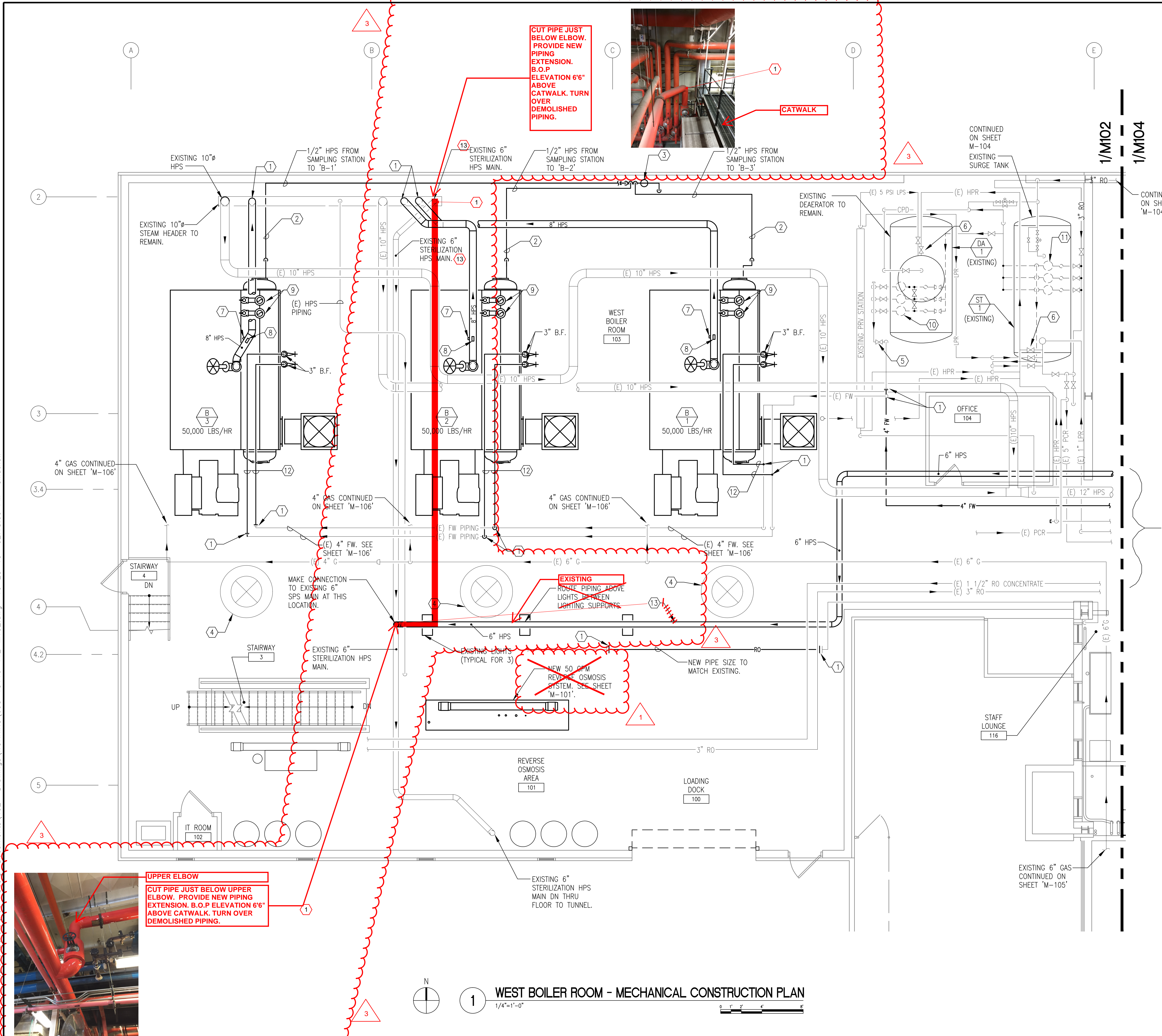


three eighths inch = one foot
one eighth inch = one foot
one quarter inch = one foot
one half inch = one foot
one inch = one foot
one and one half inches = one foot
two inches = one foot
three inches = one foot
four inches = one foot
five inches = one foot
six inches = one foot
seven inches = one foot
eight inches = one foot
nine inches = one foot
ten inches = one foot
eleven inches = one foot
twelve inches = one foot
thirteen inches = one foot
fourteen inches = one foot
fifteen inches = one foot
sixteen inches = one foot
seventeen inches = one foot
eighteen inches = one foot
nineteen inches = one foot
twenty inches = one foot
twenty one inches = one foot
twenty two inches = one foot
twenty three inches = one foot
twenty four inches = one foot
twenty five inches = one foot
twenty six inches = one foot
twenty seven inches = one foot
twenty eight inches = one foot
twenty nine inches = one foot
thirty inches = one foot
thirty one inches = one foot
thirty two inches = one foot
thirty three inches = one foot
thirty four inches = one foot
thirty five inches = one foot
thirty six inches = one foot
thirty seven inches = one foot
thirty eight inches = one foot
thirty nine inches = one foot
forty inches = one foot
forty one inches = one foot
forty two inches = one foot
forty three inches = one foot
forty four inches = one foot
forty five inches = one foot
forty six inches = one foot
forty seven inches = one foot
forty eight inches = one foot
forty nine inches = one foot
fifty inches = one foot
fifty one inches = one foot
fifty two inches = one foot
fifty three inches = one foot
fifty four inches = one foot
fifty five inches = one foot
fifty six inches = one foot
fifty seven inches = one foot
fifty eight inches = one foot
fifty nine inches = one foot
sixty inches = one foot
sixty one inches = one foot
sixty two inches = one foot
sixty three inches = one foot
sixty four inches = one foot
sixty five inches = one foot
sixty six inches = one foot
sixty seven inches = one foot
sixty eight inches = one foot
sixty nine inches = one foot
seventy inches = one foot
seventy one inches = one foot
seventy two inches = one foot
seventy three inches = one foot
seventy four inches = one foot
seventy five inches = one foot
seventy six inches = one foot
seventy seven inches = one foot
seventy eight inches = one foot
seventy nine inches = one foot
eighty inches = one foot
eighty one inches = one foot
eighty two inches = one foot
eighty three inches = one foot
eighty four inches = one foot
eighty five inches = one foot
eighty six inches = one foot
eighty seven inches = one foot
eighty eight inches = one foot
eighty nine inches = one foot
ninety inches = one foot
ninety one inches = one foot
ninety two inches = one foot
ninety three inches = one foot
ninety four inches = one foot
ninety five inches = one foot
ninety six inches = one foot
ninety seven inches = one foot
ninety eight inches = one foot
ninety nine inches = one foot
one hundred inches = one foot



ABBREVIATIONS

B	BOILER
B.F.	BOILER FEED PUMPS
B.O.	BOILER BLOWOFF
CPD	CONDENSATE PUMP DISCHARGE
CTP	CONDENSATE TRANSFER PUMP
DA	DEARATOR
(E)	EXISTING
FOR	FUEL OIL RETURN
FOS	FUEL OIL SUPPLY
FW	FEEDWATER PIPING
GPM	GALLONS PER MINUTE
HPR	HIGH PRESSURE RETURN (STEAM CONDENSATE)
HPS	HIGH PRESSURE SUPPLY (STEAM)
LPR	LOW PRESSURE RETURN (STEAM CONDENSATE)
LPS	LOW PRESSURE STEAM
PCR	PUMPED CONDENSATE RETURN
RO	REVERSE OSMOSIS
SPS	STERILIZATION PROCESS SYSTEM
ST	SURGE TANK
TYP.	TYPICAL

MECHANICAL CONSTRUCTION PLAN NOTES

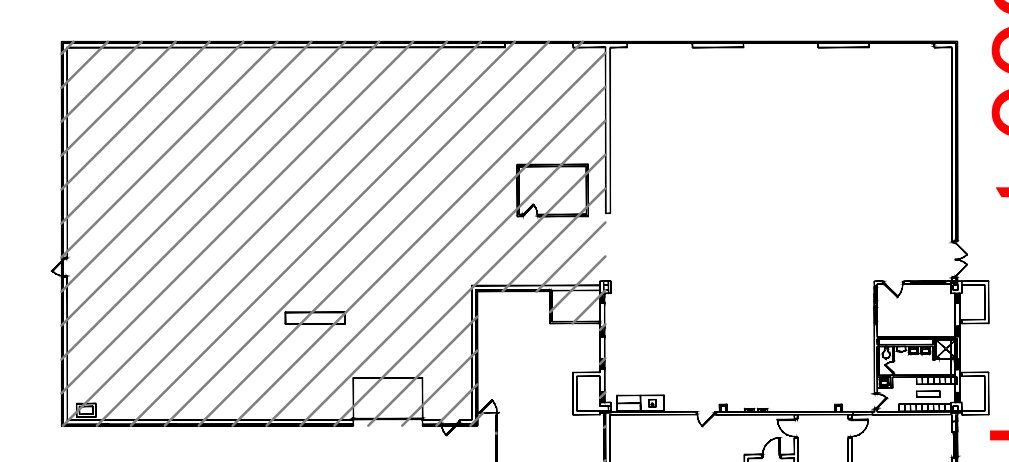
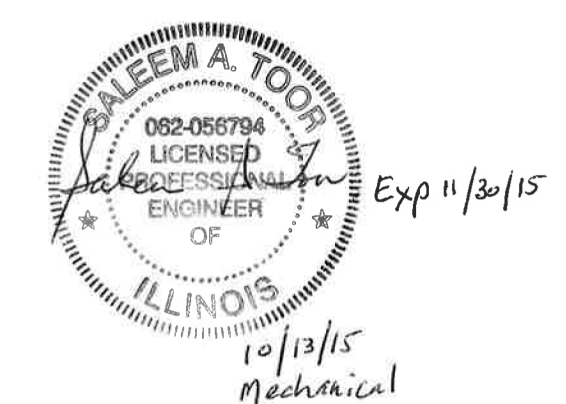
- MAKE CONNECTION TO EXISTING PIPE AT THIS LOCATION.
- 1/2" BOILER SAMPLE WATER PIPING
- EXISTING BOILER SAMPLING STATION. PROVIDE J.L. WINGERT CO. MODEL SC-1-B-316 STAINLESS STEEL (OR ZABLOCKI VA APPROVED EQUAL) SAMPLE COOLER AT SAME LOCATION AS FORMER UNIT. REFER TO "EXISTING FIELD CONDITIONS - PHOTO #3" ON SHEET "M-500".
- RE-INSTALL EXISTING SUPPLY DIFFUSERS AT SAME LOCATION AFTER THE NEW BOILERS ARE IN PLACE.
- EXISTING ISOLATION VALVE IN VERTICAL RISE OF FEED WATER PIPING. VALVE SHALL BE IN OPEN POSITION WHEN "BFP-1", "BFP-2", OR "BFP-3" ARE RUNNING AND SHALL BE CLOSED WHEN "BFP-4", "BFP-5" OR "BFP-6" ARE RUNNING.
- EXISTING VALVE. VALVE SHALL REMAIN CLOSED WHEN "DA-2"/"ST-2" ARE IN OPERATION AND OPEN WHEN "DA-1"/"ST-1" ARE IN OPERATION.
- 3/4" PLUGGED TEE FOR CALORIMETER CONNECTION (TYP.)
- PRESSURE GAUGE WITH SYPHON (TYP.)
- SAFETY VALVE VENTS UP THRU ROOF. ROUTE VENTS THRU EXISTING ROOF OPENINGS AND ENLARGE OPENINGS AS REQUIRED TO ACCOMMODATE NEW VENTS. SEE "STEAM SAFETY VALVE" DETAIL ELSEWHERE.
- EXISTING BOILER FEED PUMPS ("BFP-1", "BFP-2", "BFP-3") TO REMAIN.
- EXISTING CONDENSATE TRANSFER PUMPS ("CTP-1", "CTP-2", "CTP-3") TO REMAIN.
- SEE SHEET "M-106" FOR MORE DETAIL ON THE FEEDWATER PIPING.
- THE SPS (STERILIZATION PROCESS SYSTEM) BYPASS LINE MUST BE INSTALLED PRIOR TO SHUTTING DOWN THE STEAM SYSTEM. THE BYPASS PIPE MAY BE INSTALLED BY THE VA PRIOR TO BEGINNING THE NEW CONSTRUCTION. CONTRACTOR SHALL VERIFY WHETHER THE BYPASS HAS ALREADY BEEN INSTALLED PRIOR BEGINNING THE NEW WORK.

PIPING NOTES:

- SOME PIPING MAY BE SHOWN OFFSET FROM ITS ACTUAL LOCATION FOR CLARITY. FIELD VERIFY ALL PIPE SIZES AND LOCATIONS PRIOR TO PERFORMING ANY NEW WORK.
- ALL VALVES AND EQUIPMENT MUST BE INSTALLED SUCH THAT THEY ARE ACCESSIBLE FROM THE FLOOR OR CATWALKS. PROVIDE CHAIN WHEELS ON ALL VALVES AS NEEDED FOR ACCESSIBILITY.

EXISTING SPS STEAM LINE: DEMOLISH, REMOVE, AND PROVIDE NEW PIPING, INSULATION, AND FINISH MATCHING EXISTING TO RELOCATE STEAM LINE TO HEIGHT ALLOWING FOR EXISTING BOILER REMOVAL AND REPLACEMENT WITH NEW BOILERS. WORK TO BE COMPLETED OVER ONE WEEKEND.

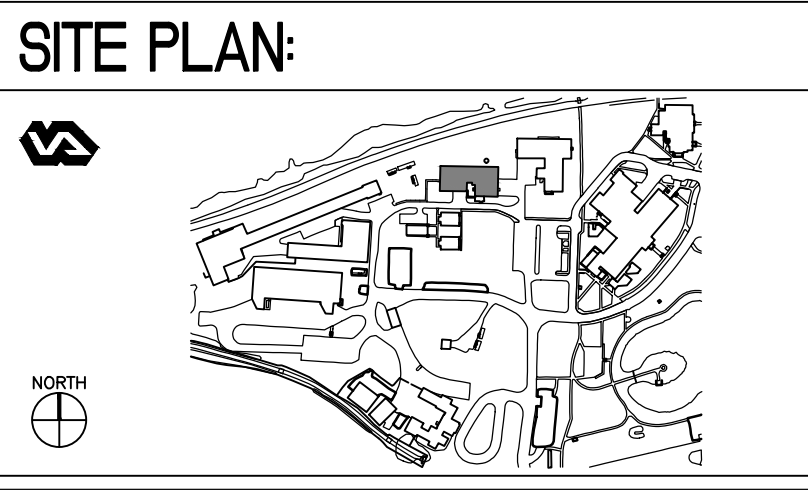
PIPING CONTINUED ON SHEET "M-104"



KEY PLAN
NTS

WEST BOILER ROOM - MECHANICAL CONSTRUCTION PLAN
1/4" = 1'-0"

AMENDMENT 3	03/07/2018
AMENDMENT 1	02/21/2018
BID DOCUMENTS	10/13/2015
95% CONSTRUCTION DOCUMENTS SUBMITTAL	09/15/2015
65% CONSTRUCTION DOCUMENTS SUBMITTAL	08/03/2015
35% SCHEMATIC DESIGN SUBMITTAL	05/20/2015
Revisions:	Date



ENGINEERS + CONSULTANTS:

GEIGER + LARSON ENGINEERING
316 N Milwaukee St | Suite 202 | Milwaukee, WI 53202
T: 414-273-1432 | www.GeigerEng.com

JOHNSON WILBUR ADAMS, INC.
175 N Washington St
Wheaton, Illinois 60187
Telephone 630-653-9060
Fax 630-653-9059
www.jwa-inc.com

ARCHITECT + ENGINEERS:

Bancroft Architects + Engineers
700 Nicholas Blvd, Suite 403
Evanston, IL 60201
T: 847.952.9362 F: 847.952.9403
www.bancroft-ae.com
Bancroft-AE Project No. 14-101-06

Drawing Title:
WEST BOILER ROOM - MECHANICAL CONSTRUCTION PLAN

Approved Project Director

Project Title:
REPLACE (3) BOILERS BUILDING 112

Location:
MILWAUKEE, WISCONSIN

Date:
10/13/2015

Checked:
SAT

Drawn:
DGG

Project Number:
695-15-116

Building Number:
112

Drawing Number:
M-102

Office of Construction and Facilities Management

Department of Veterans Affairs

Amendment 003