

PLUMBING & FIXTURE SCHEDULE

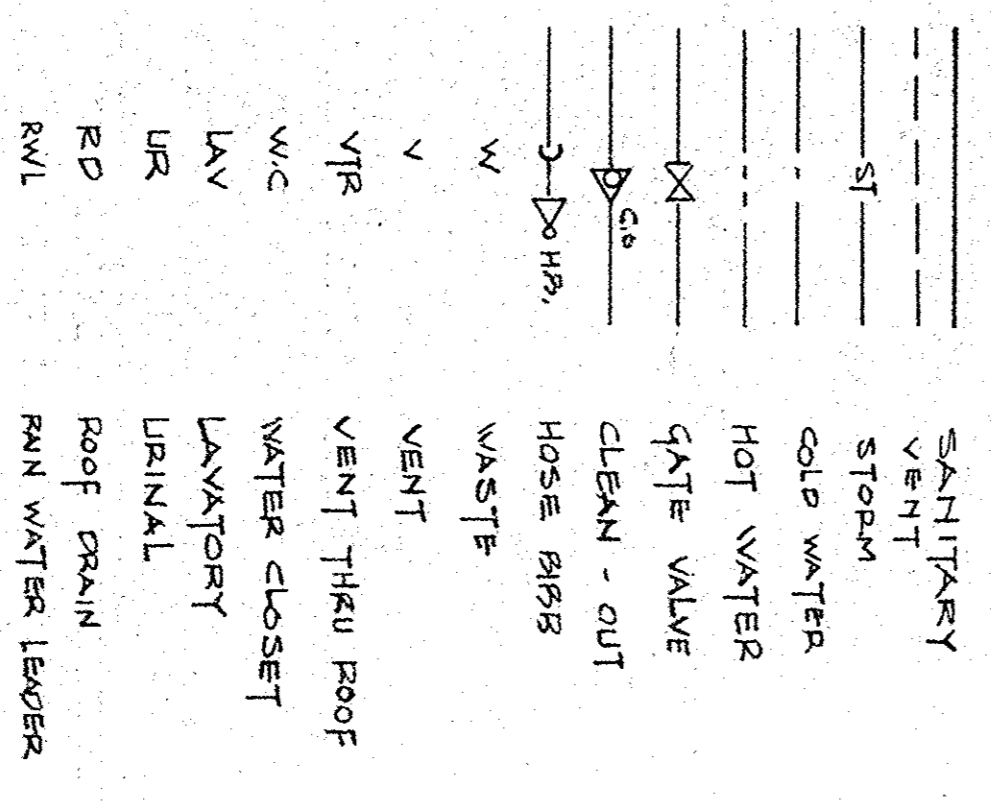
- P.1 WATER CLOSET - AMERICAN STANDARD ELONGATED TANK TYPE WATER SOWER CLOSET 2109, 405 COMPLETE WITH OPEN FRONT SEAT WITH COVER
- P.1A WATER CLOSET - AMERICAN STANDARD ELONGATED TANK TYPE WATER SOWER CLOSET 2108, 408 COMPLETE WITH SAME COVER AS LISTED FOR FIXTURE ABOVE
- P.2 URINAL - AMERICAN STANDARD WALL HUNG W/WHIRPOOL CS01-010 COMPLETE WITH SLOAN ROYAL 180 FLUSH VALV.
- P.3 LAVATORY - AMERICAN STANDARD PENALTY LAVATORY 1811G COMPLETE WITH SINGLE LEVER AQUARIAN FAUCET WITH POP UP DRAIN. ALSO FINISH & INSTALL AN OFF - SET DRAIN TO ACCOMMODATE WHEELCHAIR USAGE.
- P.4 SERVICE SINK - POWERS - FLAT COMPLETE WITH PECK MOUNTED FAUCET WITH VACUUM BREAKER
- P.4A LOUNGE SINK - ELKAY STAINLESS STEEL SINK 25" x 22" WITH HERRITAGE 4200, 010 COMPLETE WITH FAUCET AND CRUMD CUP STRAINER
- P.5 ELECTRIC WATER COOLER - WALL MOUNTED ELKAY MODEL EH-F-8 WITH STAINLESS STEEL CABINET FINISH.

NOTE: FINISH & INSTALL ALL REQUIRED TRAPS, KILPIPICES, SUPPORTS, SUPPLIES, & INDIVIDUAL STOPS FOR EACH PLUMBING FIXTURE.

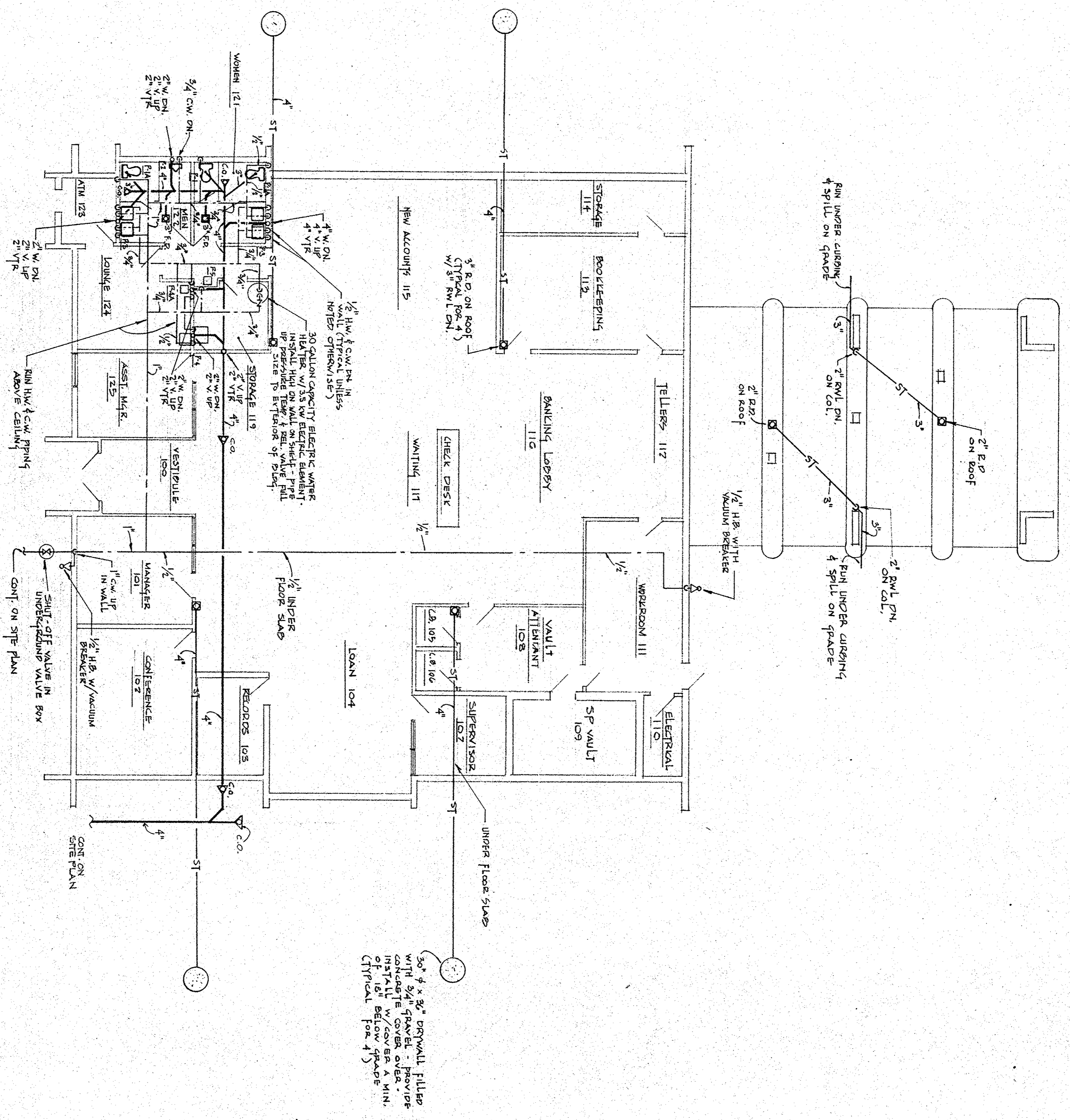
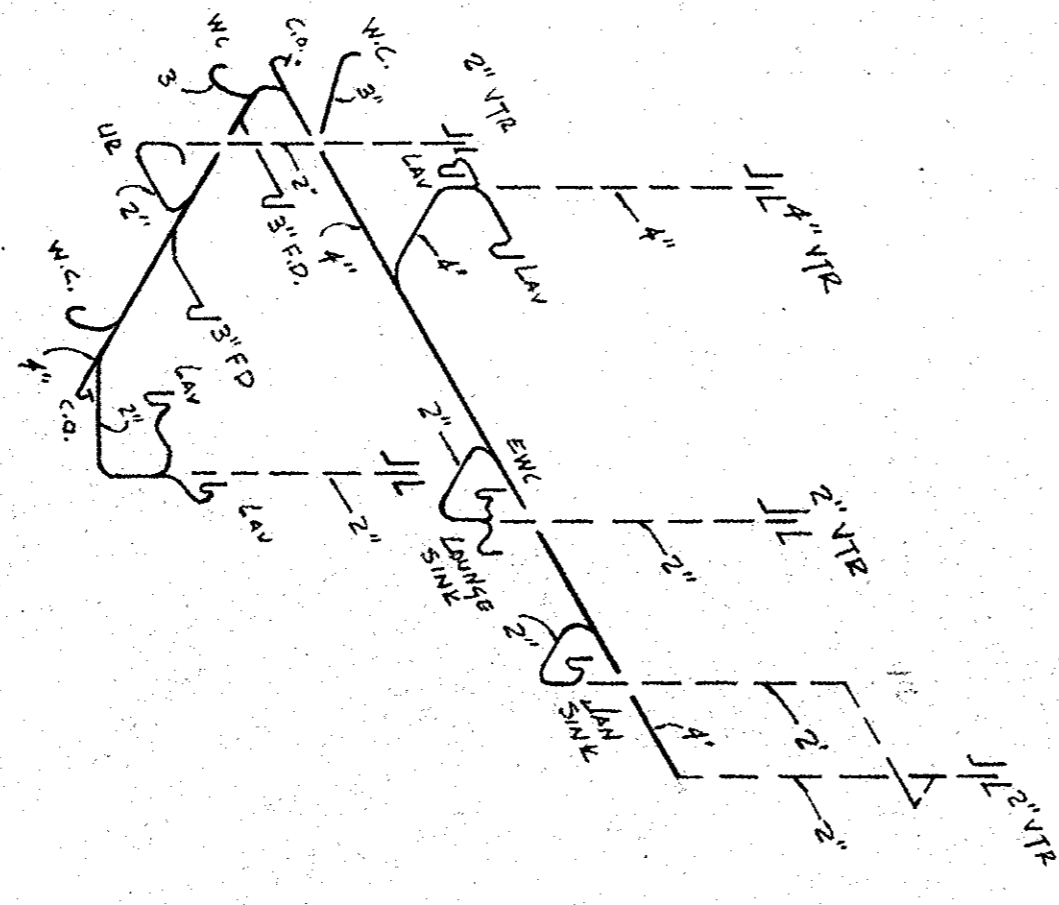
PLUMBING GENERAL NOTES

- 1) ALL PLUMBING SHALL BE INSTALLED IN STRICT ACCORDANCE WITH GOVERNING CODES
- 2) SOIL, WASTE, VENT, & STEAM PIPING SHALL BE CAST IRON NO-HUB OR PVC SCHEDULE 40
- 3) WATER PIPING SHALL BE COPPER TYPE "L" OR ALL UNDERGROUND PIPING AND TYPE "L" FOR ALL PIPING ABOVE GROUND. ALL JOINTS SHALL BE WITH 95-5 SOLDER
- 4) ALL UNDERGROUND PIPING SHALL BE WRAPPED ALL OVER WITH SCOTCH TAP 2 PLY WRAPPING OF 10 MIL THICKNESS VINYL TAPE, OR COATED ALL OVER WITH LIQUID SEAL COAT.
- 5) ALL HOT WATER PIPING SHALL BE INSTALLED WITH 1/2" THICK AEM-A-FLEX INSULATION
- 6) ALL CONCEALED HORIZONTAL STEAM PIPING IN SPACE ABOVE CEILING IS TO BE INSULATED WITH 3" THICK PLANKED TYPE INSULATION
- 7) CO-ORDINATE ALL WORK WITH ALL TRADES

PLUMBING LEGEND



SANITARY RISER  
NO SCALE



30" x 8" DRYWALL FILLED WITH 3/4" GRAVEL - PROVIDE CONCEALED COVER OVER. PROVIDE 1" DIA. BELOW GRADE. TYPICAL FOR 4'S

DRAWING NO. P-1 13 OF 17	TITLE: PLUMBING PLAN	SCALE: 3/4" = 1'-0"	DATE: 4/7/84	<b>FLORIDA CONCEPTS INC.</b> POST OFFICE BOX 39 PALM HARBOR, FLA.
	PROJECT: BAY PINES FEDERAL CREDIT UNION VETERANS ADMINISTRATION CENTER BAY PINES, FLORIDA	DWG. BY: F.G.	REVISED:	