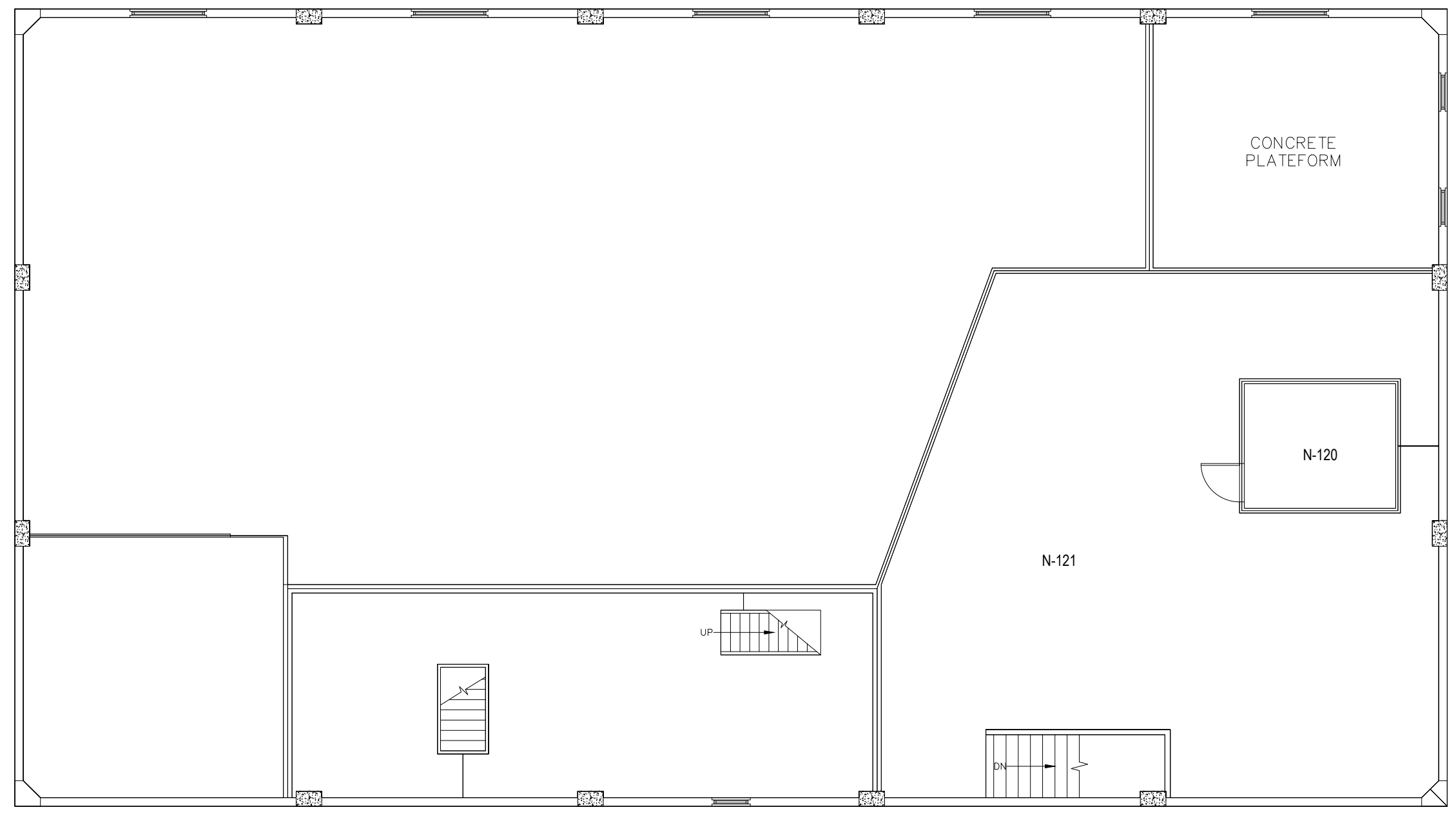
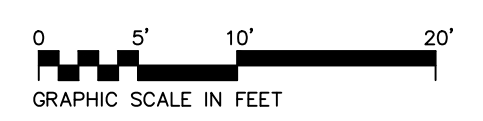


A three inches = one foot
 B one and one-half inches = one foot
 C one inch = one foot
 D three-quarters inch = one foot
 E one-half inch = one foot
 F three-eighths inch = one foot
 one-quarter inch = one foot
 one-eighth inch = one foot



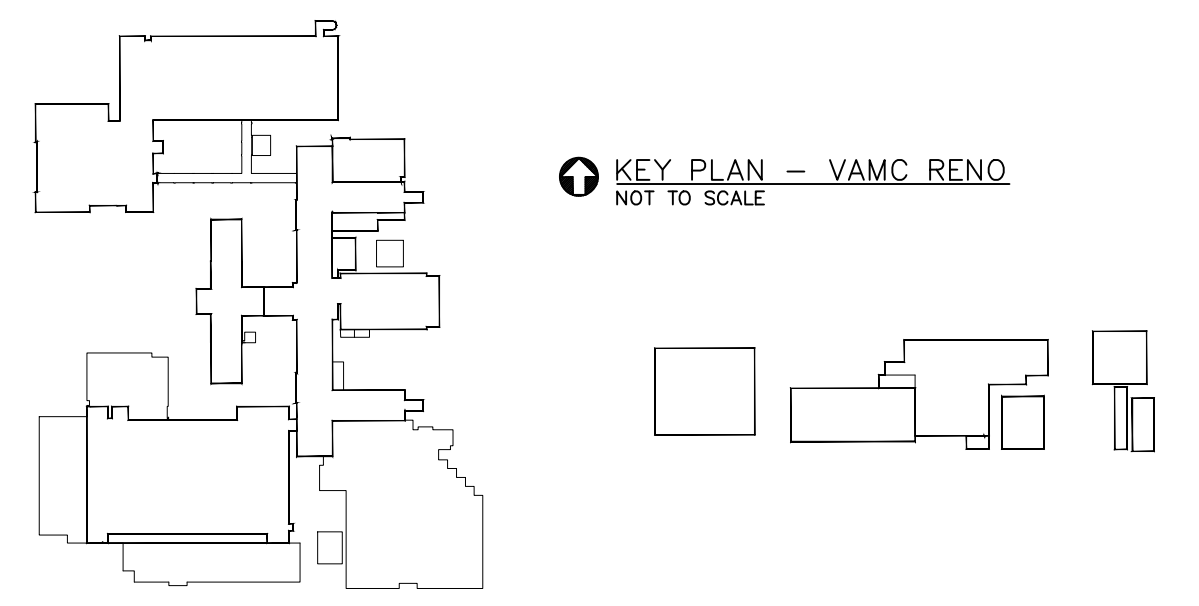
BUILDING 8 ASBESTOS CONTAINING MATERIALS NOTES:
 NO ASBESTOS CONTAINING MATERIALS WERE IDENTIFIED.

- BUILDING 8 GENERAL NOTES:**
1. OLD/FORMER ROOM NUMBER DEPICTED IN EACH ROOM WITHIN PARENTHESES, E.G. (G-101). NEW/CURRENT ROOM NUMBER DEPICTED IN EACH ROOM ABOVE OLD/FORMER ROOM NUMBER.
 2. PLEASE NOTE THAT, IN ROOMS WITH NO NEW NUMBER, NONE WAS PROVIDED IN THE "ROOM NUMBER XWALK" DATABASE, DATED 29 JAN 2013.


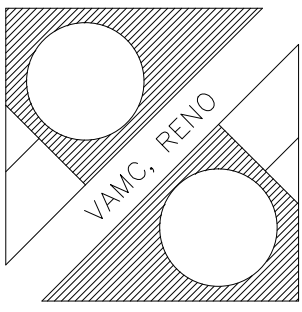


IF THIS DRAWING IS LESS THAN 30" X 42"
 IT IS A REDUCED SIZE DRAWING

BUILDING 8—MEZZANINE FLOOR PLAN
 SCALE: 3/16" = 1'-0"



KEY PLAN — VAMC RENO
 NOT TO SCALE

Revisions	Date	Professional Seal	Safety Environmental Laboratories and Consulting, Inc.  989 Yeager Parkway Pelham, AL 35124 phone (205) 823-6200 fax (205) 823-9066	Drawing Title BUILDING 8 — MEZZANINE FLOOR PLAN		Project Title ASBESTOS SURVEY		Date 04-14-14			Department of Veterans Affairs
				Approved:		Building No 8	Checked NGR	Drawn EH	Project No. 2012-0853		
				Approved:		Location DEPT. OF VETERANS AFFAIRS MEDICAL CENTER 1000 LOCUST ST., RENO, NEVADA					