

A

B

C

D

E

F

A

B

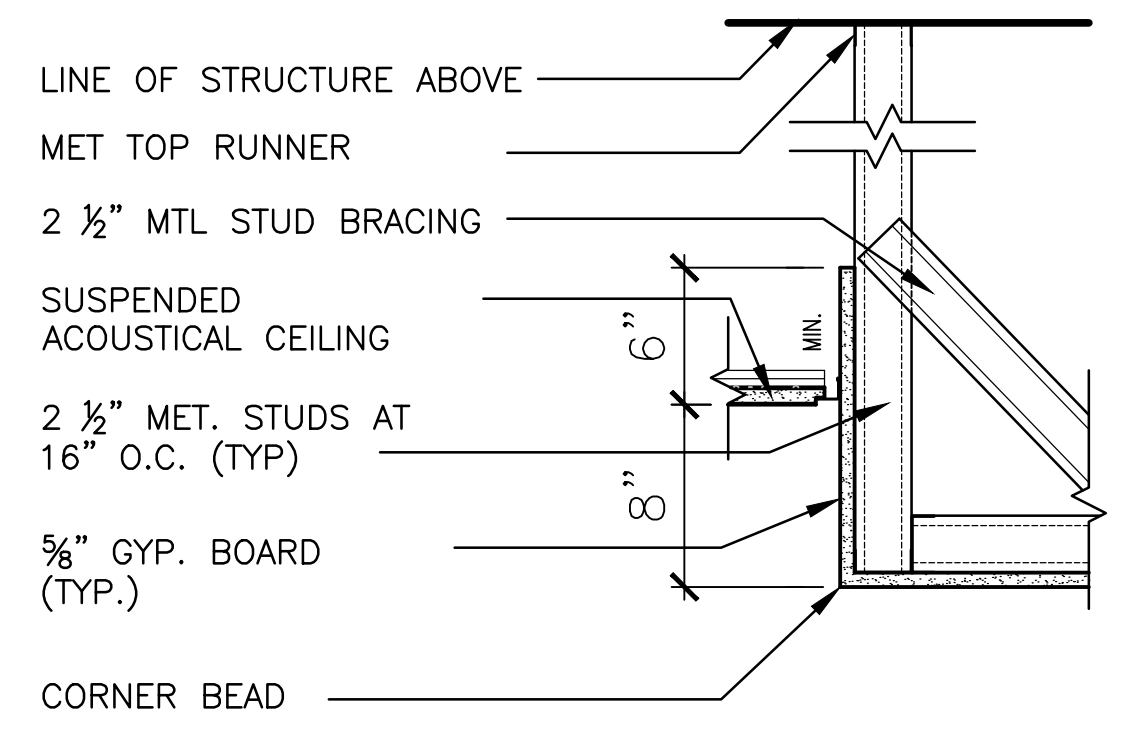
C

D

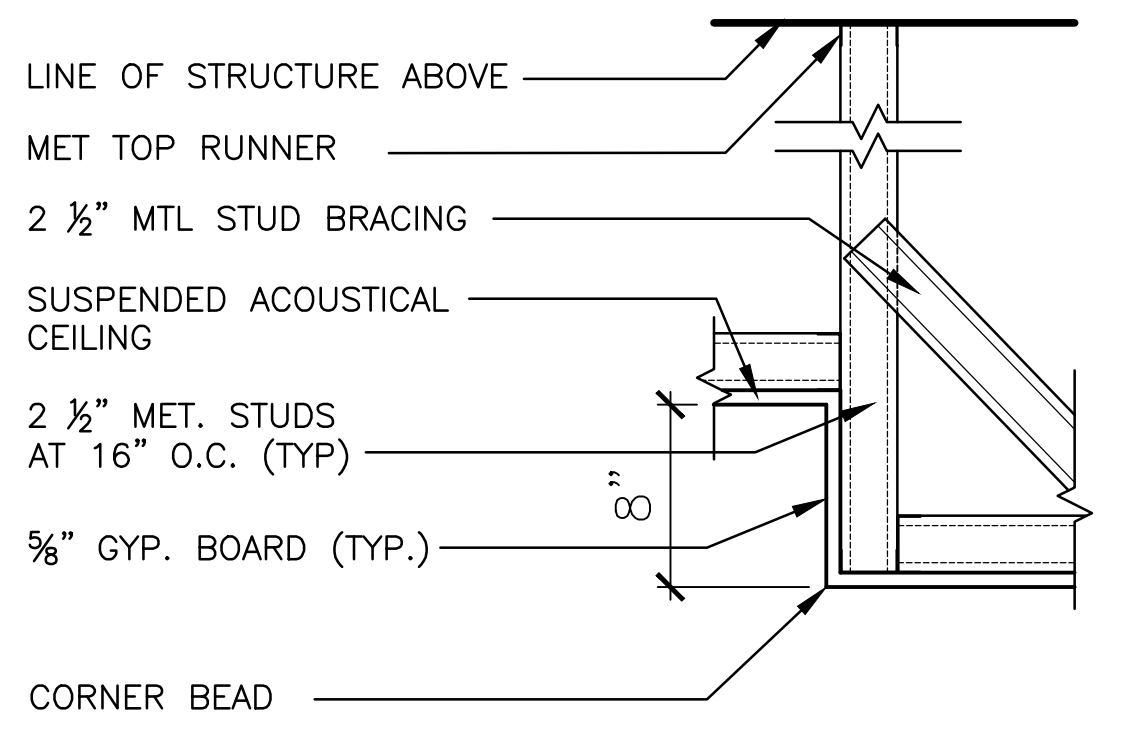
E

F

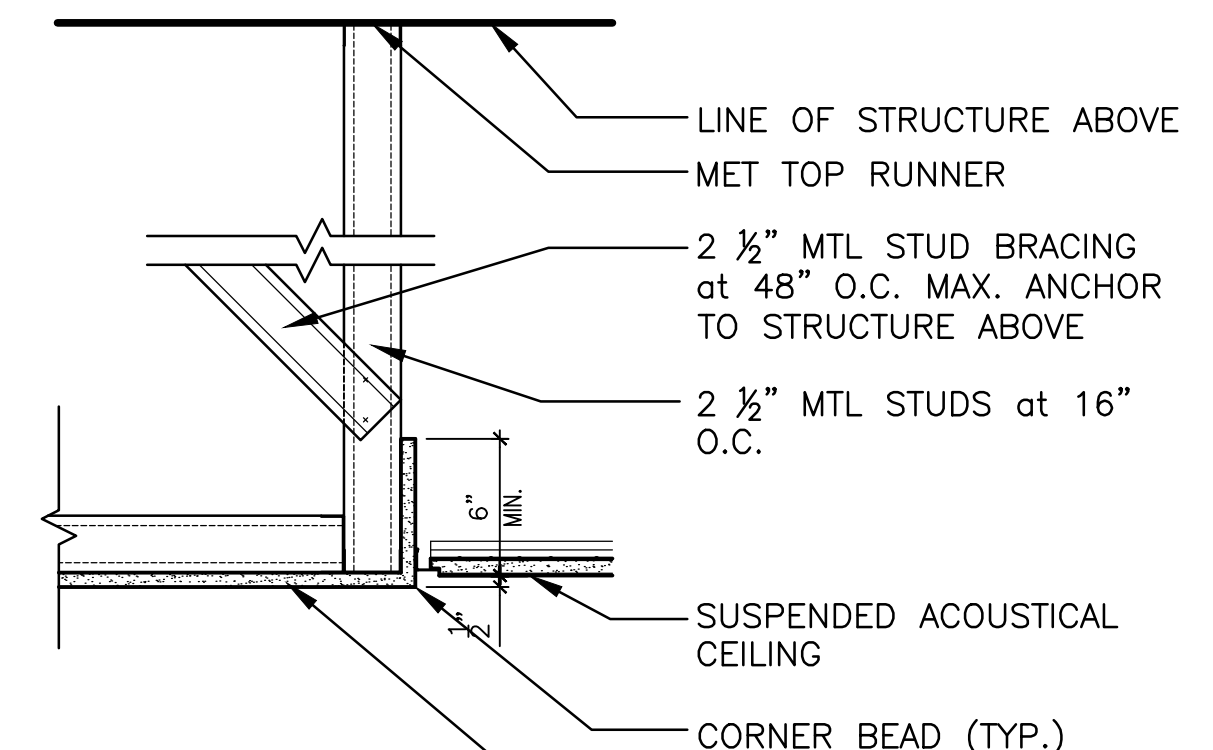
three inches = one foot
one and one-half inches = one foot
one inch = one foot
three-quarters inch = one foot
one-half inch = one foot
three-eighths inch = one foot
one-quarter inch = one foot
one-eighth inch = one foot



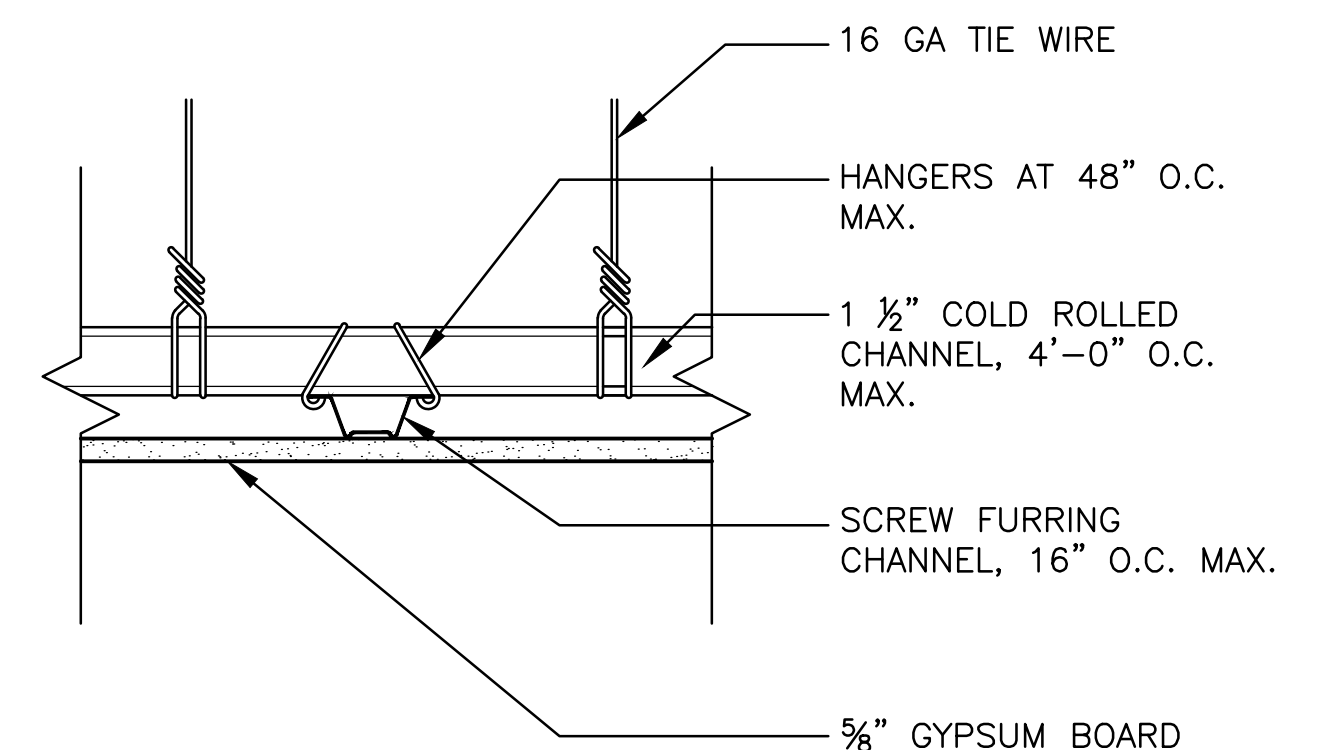
1 SOFFIT DETAIL
SCALE: 1 1/2" = 1'-0"



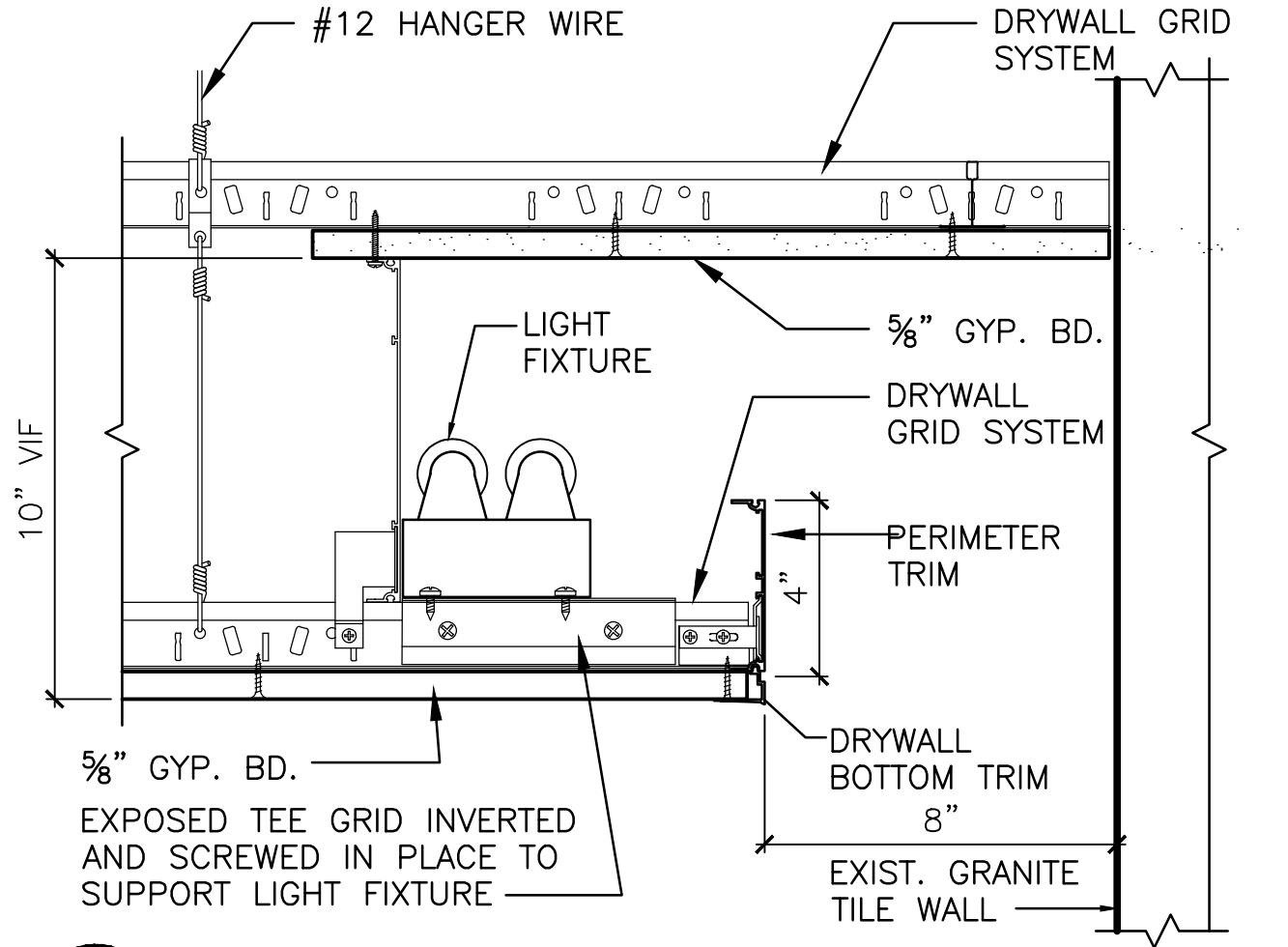
2 SOFFIT DETAIL
SCALE: 1 1/2" = 1'-0"



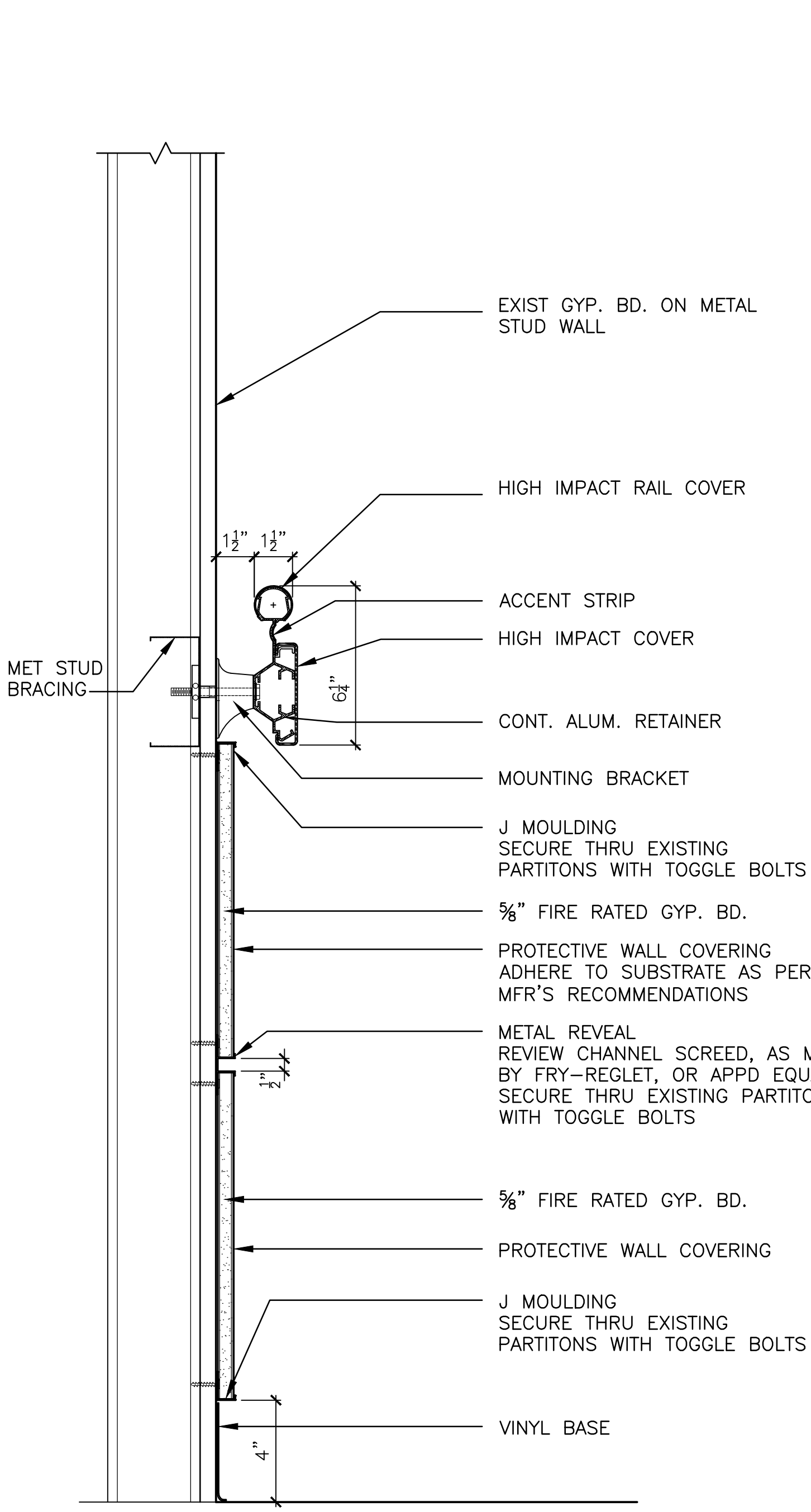
3 SOFFIT DETAIL
SCALE: 1 1/2" = 1'-0"



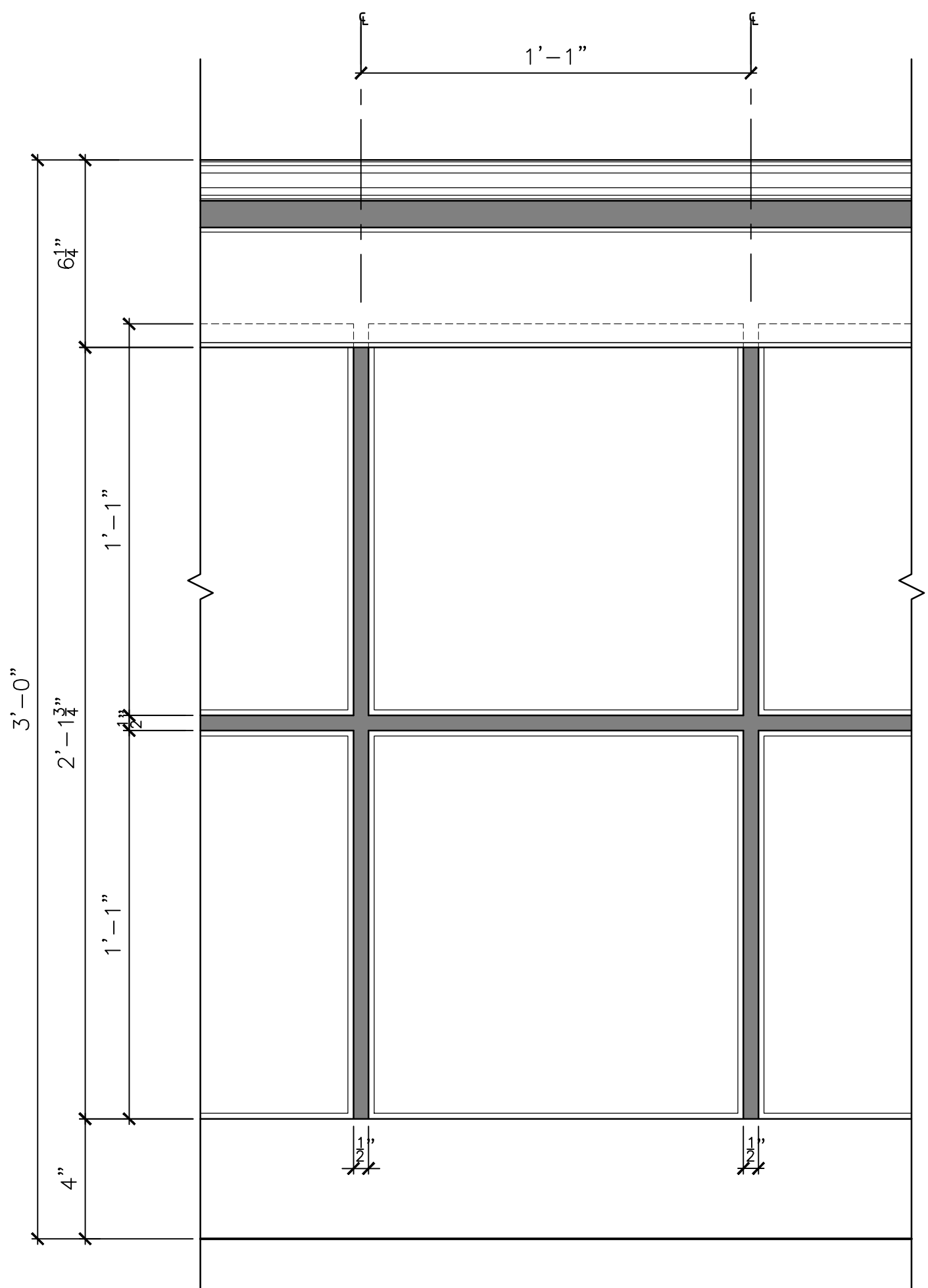
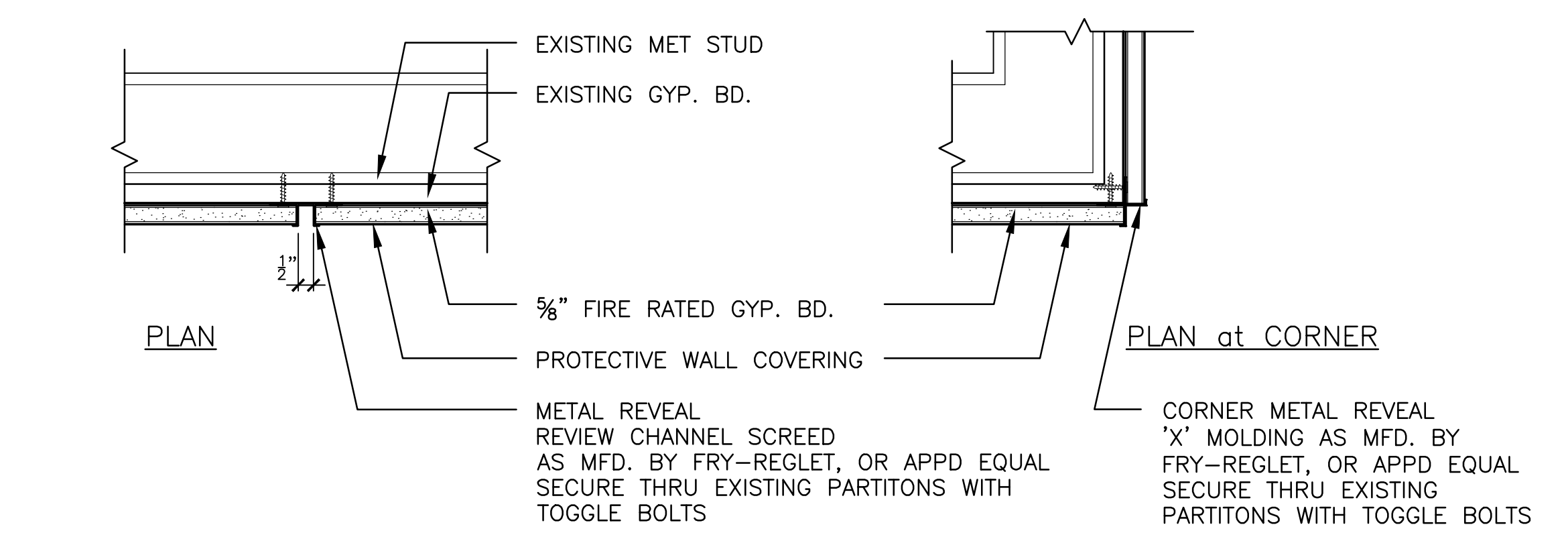
4 SUSP. GYP. BD. CEILING DETAIL
SCALE: 3" = 1'-0"



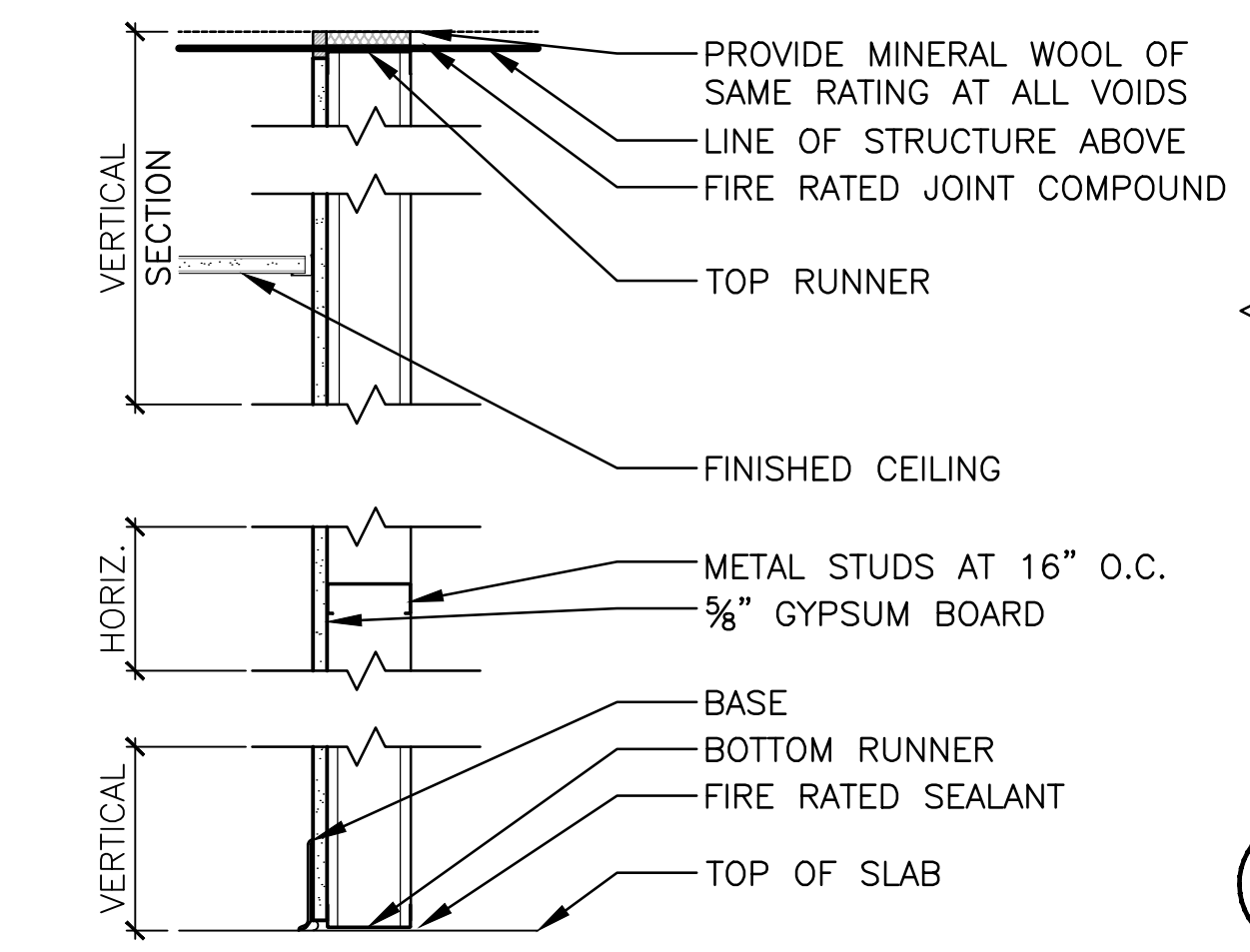
5 LIGHT COVE DETAIL
SCALE: 3" = 1'-0"



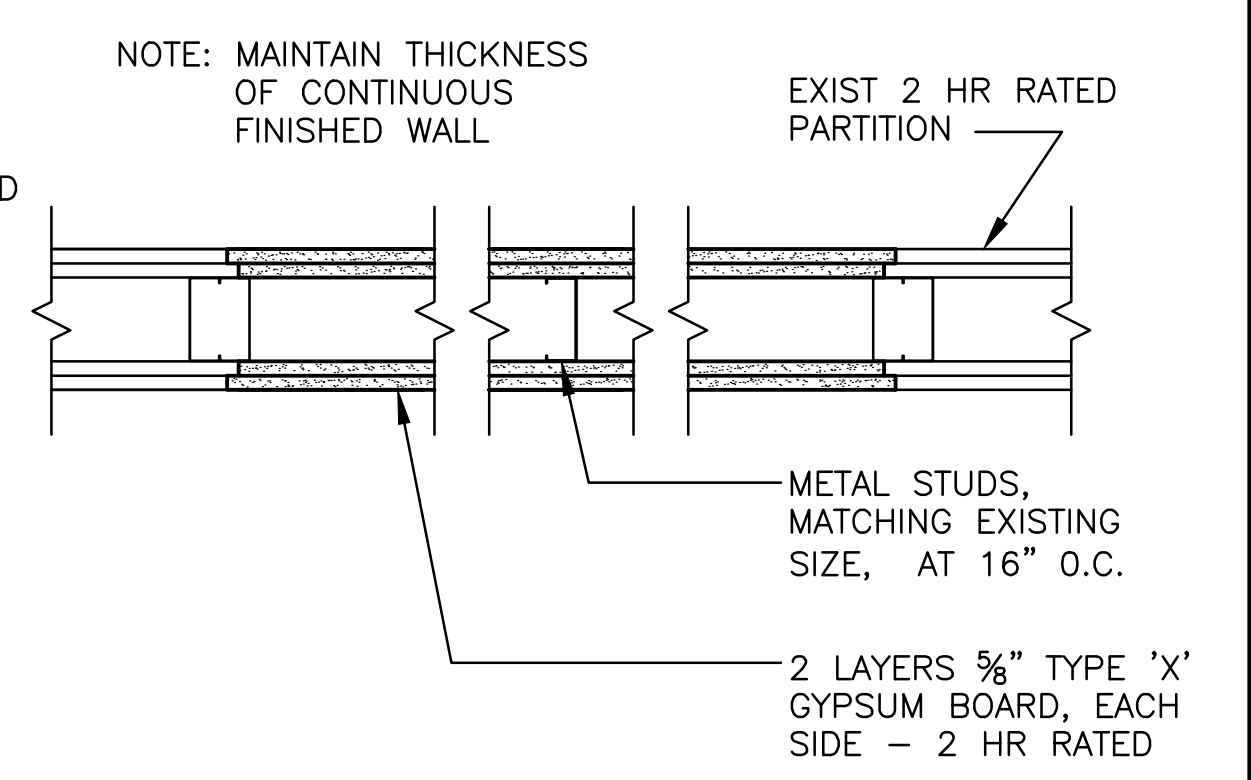
11 WAINSCOT DETAIL
SCALE: 3" = 1'-0"



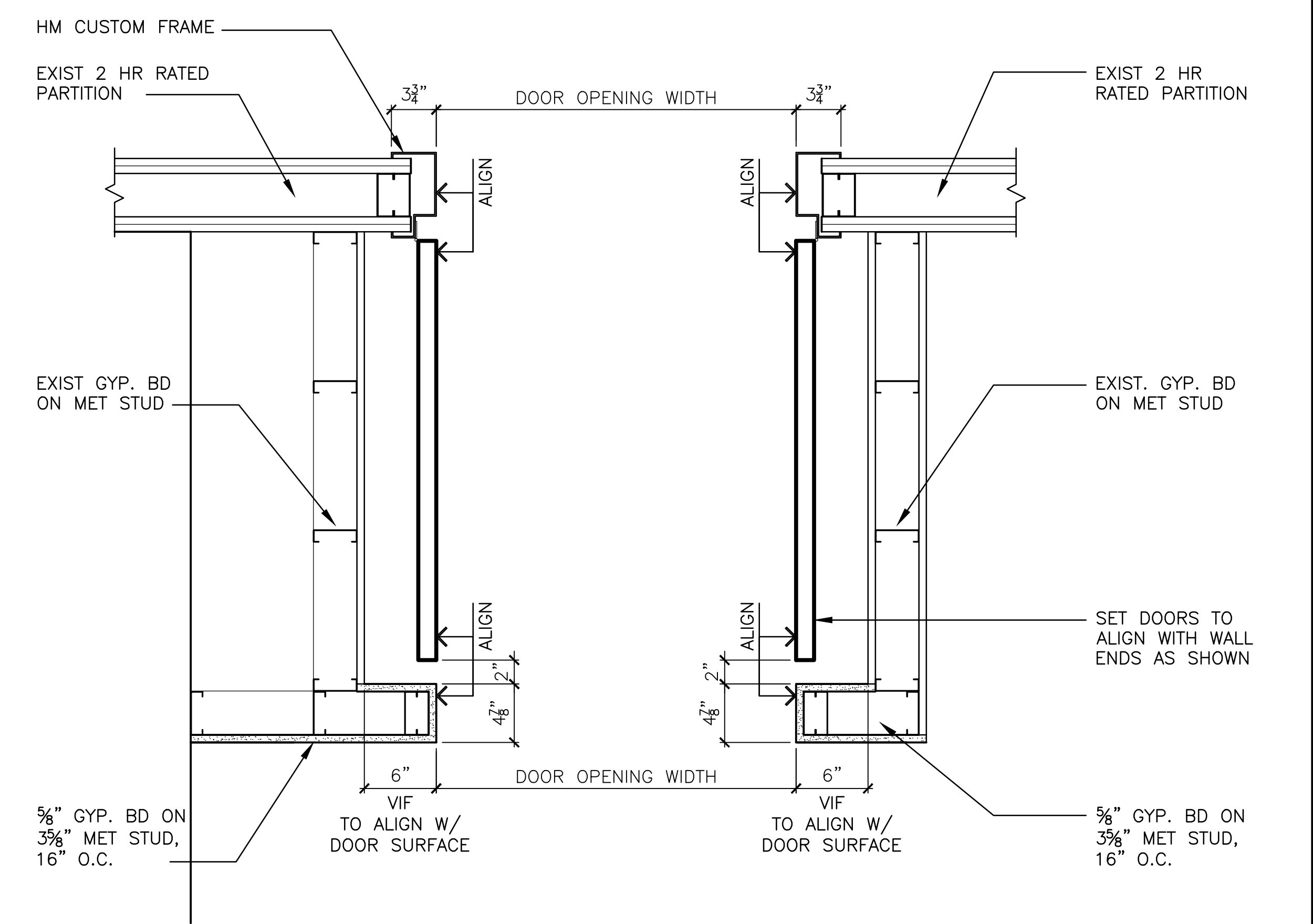
ELEVATION



9 GYP. BD. WALL DETAIL
SCALE: 1 1/2" = 1'-0"



10 WALL DETAIL at SEALED DOOR OPG.
SCALE: 1 1/2" = 1'-0"



12 DOOR JAMB DETAIL
SCALE: 1 1/2" = 1'-0"

NOTE: COORDINATE INSTALLATION OF INTEGRAL DOOR ASSEMBLY, INCL. INTERFACE WIRING W/ EXIST. FIRE DETECTION & ALARM SYSTEM.

Revisions		Date	Professional Seal		DCS INFRASTRUCTURE, LLC DESIGN & CONSTRUCTION SERVICES 33 GRANT STREET MT. HOLLY, N.J. 08060 609-351-1486 3239 ROUTE 112 BLDG. 8, STE. 48 MEDFORD, N.Y. 11763 631-320-1706		Drawing Title DETAILS Approved:		Project Title VAMC WILMINGTON, DE RENOVATE CLINICAL ADDITION and 1st FLOOR ELEVATOR LOBBIES Building Number 01 Checked DS Drawn TK Location WILMINGTON, DE		Date 31 MARCH 2011 Project No. 460-10-010 Drawing No. AR-501 Dwg. 10 of 14		100% SUBMISSION WILMINGTON VAMC Department of Veterans Affairs	
-----------	--	------	-------------------	--	---	--	--	--	--	--	--	--	---	--