

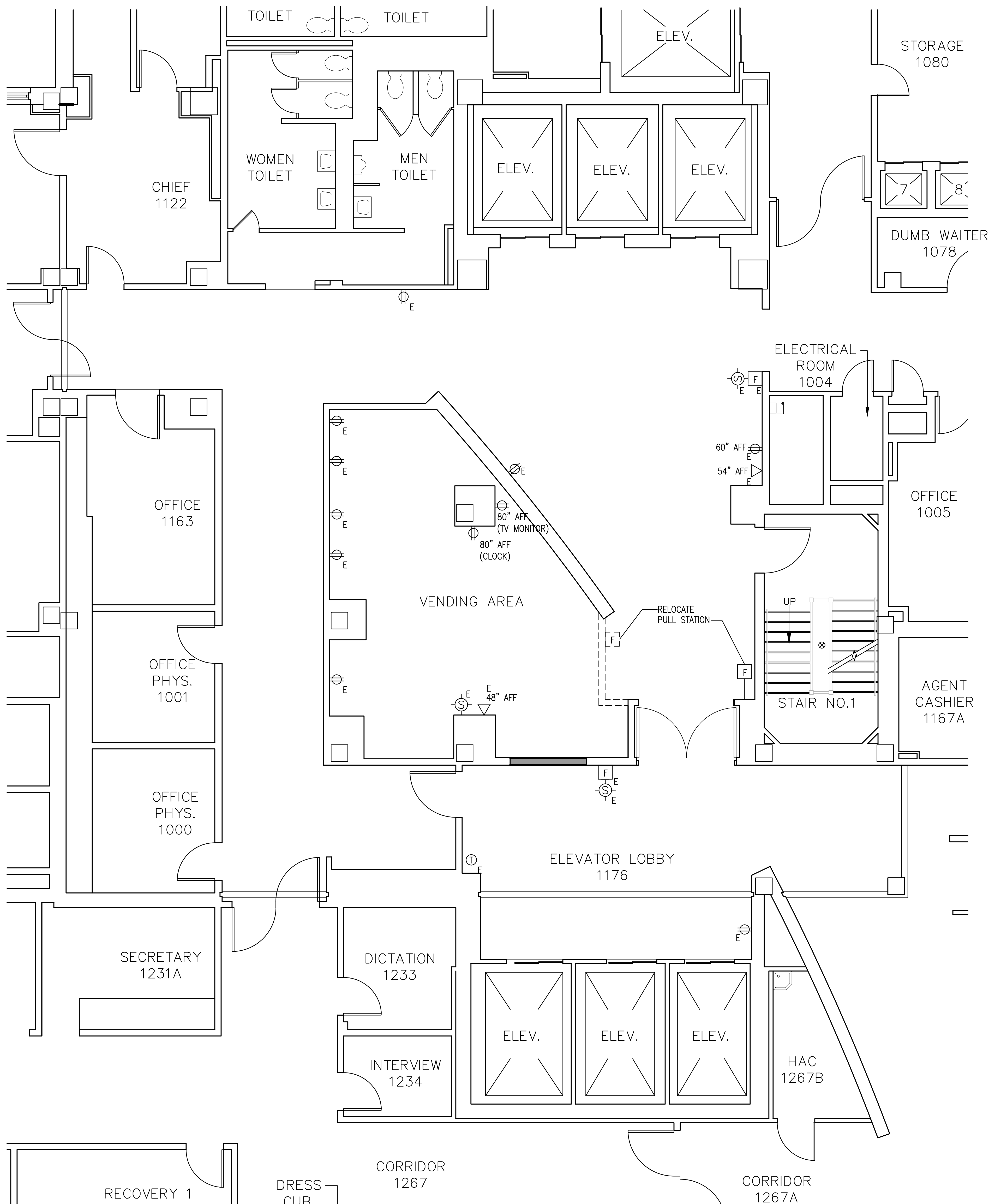
[illegible]

GENERAL NOTES:

3. ALL ELECTRICAL EQUIPMENT SHOWN ON THE DRAWINGS, AND/OR REQUIRED FOR THE FULL INTEGRITY AND COMPLETION OF THE CONTRACT SHALL BE FURNISHED, INSTALLED AND CONNECTED BY THE CONTRACTOR, EXCEPT WHERE EQUIPMENT SHOWN IS IDENTIFIED AS 'EXISTING' OR OTHERWISE NOTED ON THE DRAWINGS, TO PRODUCE FULLY FUNCTIONAL AND COMPLETE SYSTEMS.
2. EXCEPT WHERE SPECIFICALLY DIMENSIONED OR OTHERWISE LOCATED BY PERTINENT DETAILS, THE ROUTING OF CONDUITS SHOWN ON PLANS IS APPROXIMATE. THE CONTRACTOR MAY MODIFY CONDUIT ROUTINGS SHOWN ON DRAWINGS TO ACCOMMODATE EXISTING FIELD CONDITIONS, PROVIDED THAT PROPER PULL BOXES ARE PROVIDED TO FACILITATE CABLE PULLING. THE EXACT ROUTING AND METHODS OF SUPPORT SHALL BE DETERMINED IN THE FIELD.
3. ALL WORK SHALL BE DONE IN ACCORDANCE WITH FEDERAL REGULATIONS, INCLUDING THE AMERICANS WITH DISABILITIES ACT - ADA, GSA PBS-100, OCCUPATIONAL SAFETY AND HEALTH ADMINISTRATION (OSHA), ALL STATE CODES AND REGULATIONS GOVERNING THE INSTALLATION, INCLUDING BUT NOT LIMITED TO THE CURRENT EDITION OF THE FOLLOWING CODES:
- a. NFPA 70 - 2008, NATIONAL ELECTRICAL CODE
  - b. NFPA 72 - 2007, NATIONAL FIRE ALARM CODE
  - c. NFPA 90A - 2009, STANDARD FOR THE INSTALLATION OF A/C AND VENTILATION SYSTEMS
  - d. NFPA 99 - 2009, HEALTH CARE FACILITY CODE
  - e. NFPA 101 - 2009, LIFE SAFETY CODE
  - f. NFPA 110 - 2009, STANDARD FOR EMERGENCY AND STANDBY POWER SYSTEMS
  - g. 2009 INTERNATIONAL BUILDING CODE
  - h. 2009 INTERNATIONAL MECHANICAL CODE
  - i. 2009 INTERNATIONAL FIRE CODE
  - j. 2007 ASME/ANSI A17.1 ELEVATOR CODE
  - k. VA FIRE PROTECTION DESIGN MANUAL
  - l. VA ELECTRICAL DESIGN MANUAL FOR HOSPITALS
4. ALL 600 VOLT ELECTRICAL POWER CONDUCTORS SHALL BE COPPER, INSULATION TYPE XHHW OR DUAL RATED THHN/THWN, RATED 90 DEGREES CENTIGRADE, AND INSTALLED IN RACEWAY PER CODE AND SPECIFICATION REQUIREMENTS.
5. THE CONTRACTOR SHALL PROVIDE ALL NECESSARY MATERIALS, LABOR AND ATTENDANCE FOR THE OPERATION OF TEMPORARY LIGHT AND CONSTRUCTION POWER AS REQUIRED DURING WORKING HOURS FOR THE ENTIRE CONSTRUCTION PERIOD.
6. THE CONTRACTOR SHALL FIELD VERIFY ALL DIMENSIONS AND EXISTING CONDITIONS. ALL DISCREPANCIES THAT MAY INTERFERE WITH THE PROJECT SHALL BE REPORTED TO THE COTR BEFORE STARTING WORK.
7. ALL CONDUITS SHALL BE 1/2" MINIMUM SIZE UNLESS OTHERWISE NOTED. POWER CONDUITS SHALL BE RIGID GALVANIZED STEEL (RGS) IN MECHANICAL AND ELECTRICAL ROOMS, ELECTRICAL METALLIC TUBING (EMT) IN OTHER AREAS, OR AS OTHERWISE NOTED ON PLANS. ALL MEDIUM VOLTAGE CONDUITS SHALL BE RGS ONLY, PAINTED ORANGE WHEREVER VISIBLE.
8. ALL RACEWAYS, WIRING AND OTHER WORK IS NEW UNLESS SPECIFICALLY INDICATED OTHERWISE ON DRAWINGS OR DESCRIBED IN SPECIFICATIONS.
9. MAINTAIN THE CONTINUITY OF EXISTING CIRCUITS THAT ARE NOT BEING REMOVED UNDER THIS CONTRACT, BUT WHICH MAY BE AFFECTED BY THIS WORK. PROVIDE CONDUIT, WIRING, ETC. THAT MAY BE NECESSARY TO MAINTAIN THE FUNCTIONALITY OF ALL EXISTING CIRCUITS AND SYSTEMS.
10. EXISTING UNDERGROUND DUCTS THAT ARE TO BE USED SHALL BE THOROUGHLY CLEANED BY PULLING THROUGH A FULL SIZE MANDREL AND TIGHT FITTING BRUSH (2 PASSES) PRIOR TO PULLING IN NEW CONDUCTORS.
11. ALL EQUIPMENT THAT IS REMOVED SHALL BECOME THE PROPERTY OF THE CONTRACTOR, UNLESS INDICATED OTHERWISE BY THE COTR, AND SHALL BE REMOVED FROM THE PREMISES AND DISPOSED OF IN ACCORDANCE WITH ALL APPLICABLE LAWS, ORDINANCES AND REQUIREMENTS.
12. ALL NEW CONDUIT SHALL BE RUN ABOVE HUNG CEILINGS, OR OTHERWISE CONCEALED WHEREVER POSSIBLE.
13. REMOVE EXISTING CEILING TILES AND GRID IN AREAS WHERE NECESSARY TO PERFORM WORK. REINSTALL CEILING TILES AND GRID AFTER COMPLETION OF WORK IN HUNG CEILING SPACES. REPLACE DAMAGED TILES AND GRID WITH NEW MATERIALS MATCHING THE EXISTING.
14. MAINTAIN EXISTING FIRE ALARM, DETECTION, COMMUNICATIONS, SECURITY AND OTHER SYSTEMS FULLY OPERATIONAL AND IN SERVICE AT ALL TIMES, UNLESS OTHERWISE APPROVED IN WRITING BY THE COTR. THE CONTRACTOR SHALL COMPLY WITH NFPA 101 IF FIRE ALARM OR SPRINKLER SYSTEMS WILL BE OUT OF SERVICE DUE TO PROJECT RELATED WORK. A FIRE WATCH, AT THE CONTRACTOR'S EXPENSE, SHALL BE PROVIDED AS REQUIRED OR DIRECTED.
15. ALL ASBESTOS CONTAINING MATERIALS (ACM) AND LEAD PAINT KNOWN TO BE IN THE VA HAVE BEEN REMOVED, ABATED, OR ARE NOT IN AREAS AFFECTED BY THIS WORK. SHOULD THE CONTRACTOR ENCOUNTER ANY SUSPECTED ACM OR LEAD PAINT WHILE PERFORMING WORK, NOTIFY THE COTR IMMEDIATELY.
16. THE VA WILL OCCUPY THE BUILDING DURING THE ENTIRE PERIOD OF CONSTRUCTION. THE CONTRACTOR SHALL COOPERATE FULLY WITH ALL VA PERSONNEL DURING CONSTRUCTION OPERATIONS TO MINIMIZE CONFLICTS AND INCONVENIENCE TO FACILITY OPERATIONS. PERFORM ALL WORK DURING NORMAL FACILITY WORKING HOURS, EXCEPT FOR THOSE TASKS REQUIRING POWER OUTAGES WHICH MUST BE DONE NIGHTS/WEKENDS AS APPROVED BY THE COTR 7 DAYS IN ADVANCE OF SUCH OUTAGE. ALL NECESSARY CORE DRILLING MUST BE PERFORMED BY THE CONTRACTOR AND MUST BE SCHEDULED AND APPROVED BY THE COTR 48 HOURS IN ADVANCE. THE CONTRACTOR SHALL NOT INTERFERE WITH BUILDING OPERATIONS. THE HOSPITAL IS OCCUPIED AND OPERATIONAL 24 HOURS, 7 DAYS PER WEEK.
17. THE CONTRACTOR SHALL MAINTAIN ALL MEANS OF EGRESS FROM THE WORKPLACE FREE OF OBSTRUCTIONS OR IMPEDIMENTS TO TRAVEL, SO THAT PERSONNEL WILL HAVE IMMEDIATE AND UNINHIBITED PASSAGE FROM OR THROUGH THE WORKPLACE IN THE EVENT OF A FIRE OR OTHER EMERGENCY. THE CONTRACTOR WILL AT ALL TIMES PREVENT ANY MATERIALS OR DEBRIS FROM BLOCKING ACCESS TO EXITS AND PASSAGEWAYS TO EXITS. CONSTRUCTION MATERIALS SHALL BE SECURELY STORED, WITH DEBRIS REMOVED AT THE END OF EACH WORK DAY.
18. THE CONTRACTOR SHALL PATCH AND SEAL ALL OPENINGS IN WALLS, FLOORS OR CEILINGS WITH UL OR FM APPROVED FIRE RESISTIVE MATERIALS, AS FURTHER DESCRIBED IN SPECIFICATIONS AND DRAWING DETAILS. THE RATING OF THE FIRESTOPPING MUST AT LEAST EQUAL THE RATING OF THE EXISTING BARRIER (SMOKE TIGHT, 1-HOUR FIRE RATED, 2-HOUR FIRE RATED, ETC.). OPENINGS IN FLOORS MUST BE SEALED AT THE END OF EACH WORK DAY WITH TEMPORARY 'FIRE STOPS' OR 'FIRE PLUGS' UNTIL THE PERMANENT FIRE STOPPING MATERIALS ARE APPLIED.
19. THE CONTRACTOR MUST NOT WORK ON ANY ENERGIZED EQUIPMENT ON THIS PROJECT UNLESS APPROVED BY THE COTR. ALL CONTRACTOR PERSONNEL MUST UTILIZE APPROPRIATE PERSONAL PROTECTIVE EQUIPMENT (PPE) FOR WORKING CONDITIONS ENCOUNTERED.
20. THE CONTRACTOR MAY ONLY WORK ON ONE FLOOR OF THE HOSPITAL AT A TIME, UNLESS OTHERWISE APPROVED BY THE COTR.
21. ALL ELECTRICAL EQUIPMENT THAT IS SHUT DOWN FOR REPLACEMENT OR MODIFICATION SHALL BE LOCKED-OUT AND TAGGED-OUT. THE CONTRACTOR SHALL SUBMIT A LOCK-OUT / TAG-OUT PLAN TO THE COTR FOR APPROVAL PRIOR TO STARTING WORK, WHICH SHALL BE COORDINATED WITH THE FACILITY ELECTRICAL SHOP.
22. THE CONTRACTOR SHALL PROVIDE TEMPORARY CONSTRUCTION BARRIERS AS REQUIRED AND AS DIRECTED TO PREVENT DUST IN CONSTRUCTION AREAS FROM ENTERING THE OCCUPIED AREAS.
23. CONTRADICTION OR MISSING INFORMATION ON THESE DRAWINGS, SUCH AS WIRE SIZES, CIRCUIT BREAKER AMPS OR NUMBER OF POLES, ETC., WHICH ARE FOUND TO BE DIFFERENT FROM ACTUAL FIELD CONDITIONS OBSERVED WHILE PERFORMING WORK UNDER THIS CONTRACT, SHALL BE CAREFULLY MARKED ON THE AS-BUILT DRAWINGS.

PROJECT NOTES:

1. PROVIDE OUTLET BOX EXTENSION RINGS FOR ALL OUTLET SHOWN AS EXISTING TO REMAIN, AS REQUIRED TO ACCOMMODATE WALL THICKNESS INCREASED BY NEW WALL FINISHES. PROVIDE BRUSHED STAINLESS STEEL DEVICE PLATE FOR ALL NEW AND EXISTING OUTLETS.
2. INSTALL 120A CIRCUIT BREAKERS IN EXISTING PANEL FOR ALL NEW BRANCH CIRCUITS SHOWN. ASSIGN CIRCUIT MEMBERS IN FIELD AND UPDATE PANEL DIRECTION.
3. COORDINATE MOUNTING HEIGHT OF TV RECEPTACLE WITH ARCHITECTURAL WALL SECTION.
4. PROVIDE RIGID STEEL JOINT BELOW FLOOR (ABOVE HUNG CEILING ON FLOOR BELOW) FROM FLOOR OUTLET TO RECESSED J-BOX SHOWN. POWER CONDUIT TO BE ¾", DATA CONDUIT 1".



### LEGEND

- |    |  |
|----|--|
| F  | FIRE ALARM PULL STATION                                |
| ▽  | PHONE JACK   |
| ⌀  | ELECTRICAL OUTLET                                      |
| ⊙  | FIRE ALARM STROBE – WALL MTD                           |
| \$ | SWITCH   |
| ⊖  | THERMOSTAT   |
| E  | DENOTES EXISTING TO REMAIN<br>PROVIDE NEW COVER PLATES |

**POWER PLAN**  
SCALE: 1/4" = 1'-0"

[illegible]