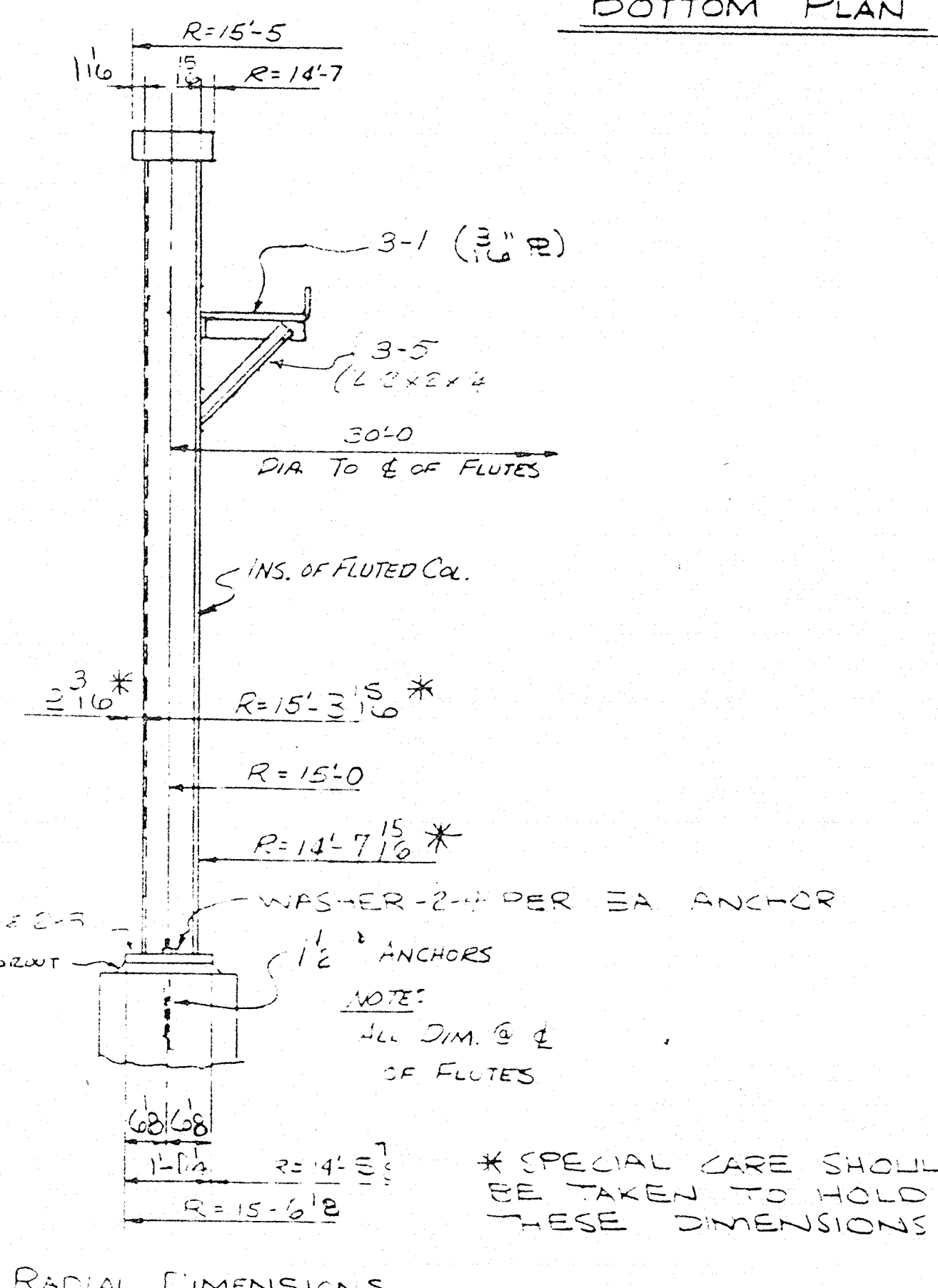
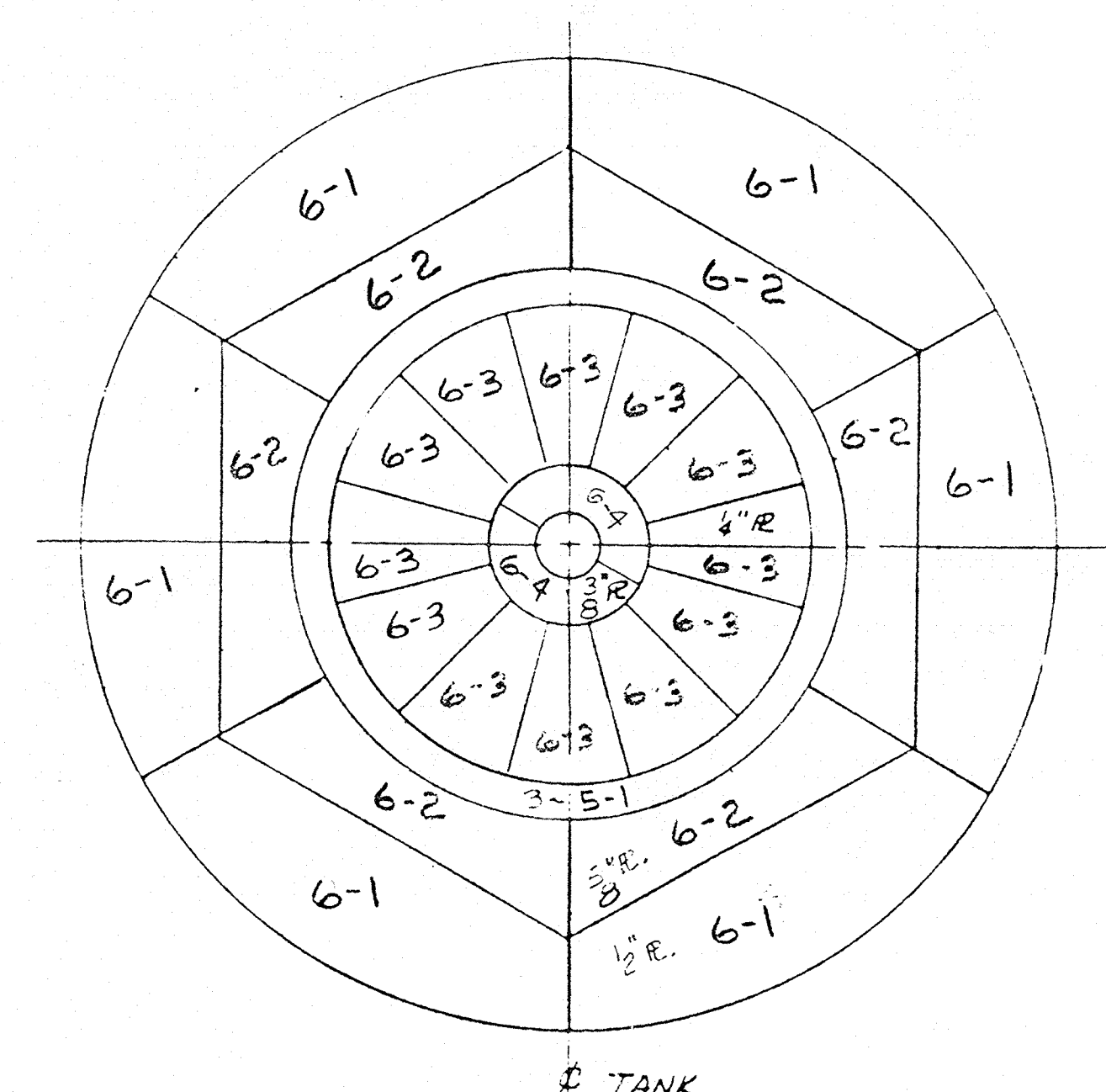
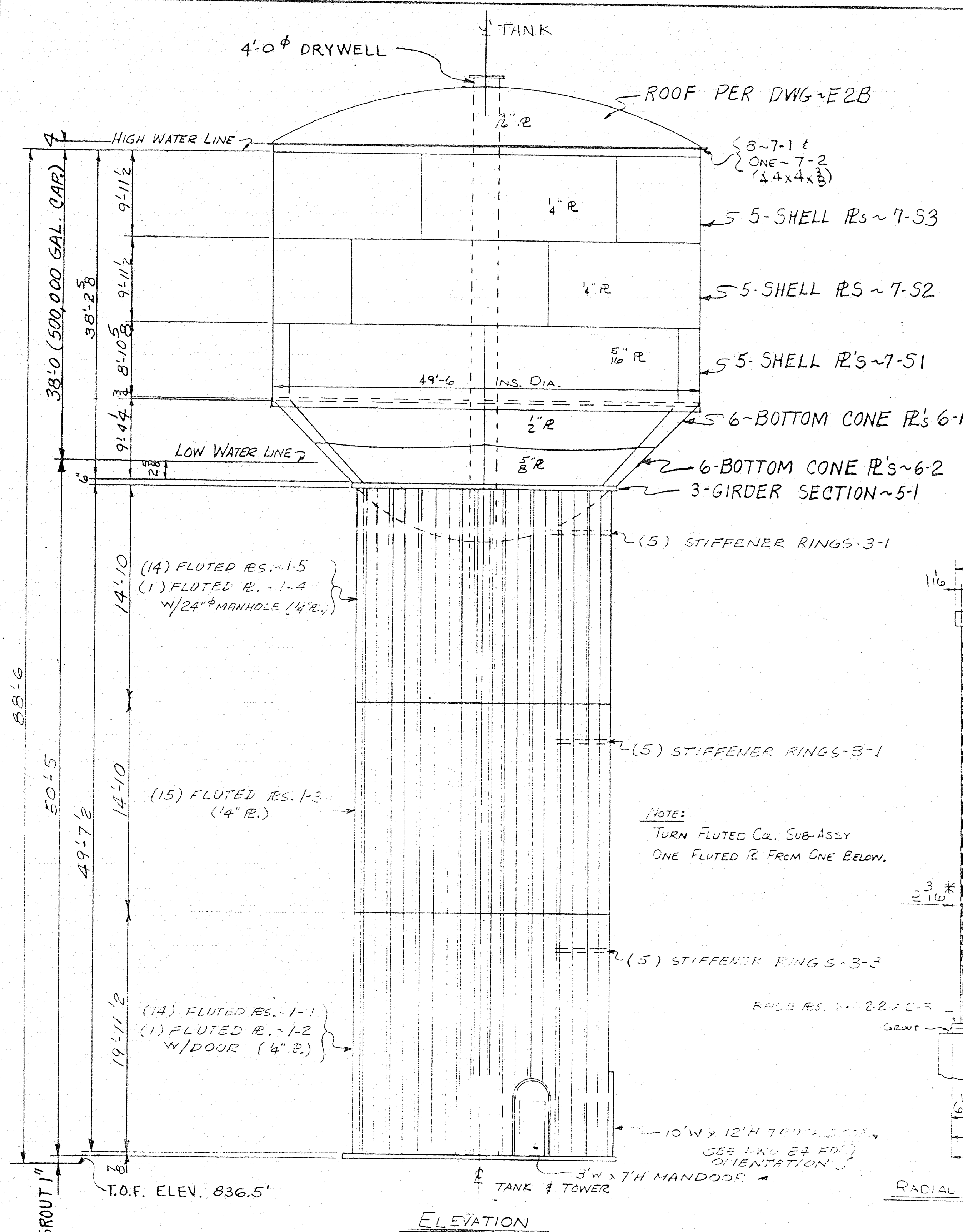


4 3 2 1

500 M. HP (5)

FORM # 18100-1/83



FOREMAN NOTE:
SEE DWG. E3B FOR SUB-ASSY. COMMENTS
& DOCUMENTATION BEFORE CONSTRUCTION

ALL WELDS ON ERECTION DWGS. ARE
FIELD WELDS
WELD SYMBOL "CP" = COMPLETE PENETRATION

ALL FIELD WELDS QUALIFIED BY
WPS 50-39 (E6010 & E6011) WPS 76-34 (NR 311)
WPS 74-65 (E7018) WPS 82-24 (NR 311)
WPS 81-139 (E7014)

ALL FIELD WELDS ARE PER WPS 50-39 (E6010) UNLESS NOTED
TANK TESTING NOTES

1. SPOT X-RAY PER AWWA D100-84
2. HYDROTEST (WATER FOR HYDROTEST TO BE FURNISHED
IN TANK & DISPOSED OF BY OTHERS)
3. HYDROTEST AFTER PAINTING

GENERAL NOTES:

1. ALL CONNECTIONS WELDED EXCEPT AS SHOWN ON DRAWINGS.
2. SHOP PAINT PER DWG. P1.
3. FIELD PAINTING AND STERILIZATION PER SHEETS P1 & D1 RESPECTIVELY.
4. WELD INSPECTION OF WATER BEARING PLATES TO BE BY
RADIOGRAPHS PER AWWA D100-84.
5. SEE DWG. E2B FOR ROOF ERECTION
6. E3AB WELDING DIAGRAM
7. E3B GROUND SUB-ASSY.
8. E4 ORIENTATION
9. E5 FLUTED COLUMN LADDER
10. E6 WALKWAY & DRYWELL ERECTION
11. E7AB O'FLOW
12. E7B INLET
13. E8 HANDLICK & TRUCK DOOR
14. E9 CONDENSATE CEILING
15. E1 ELECTRICAL DIAGRAM
16. E2 SHIM LOCATION

SUBLET ITEMS (ALL MATERIAL & LABOR)

1. FIELD PAINTING AND STERILIZATION
2. ELECTRICAL WORK.
3. CATHODIC PROTECTION.
4. TRUCK & HANDLER

SHOP DWG #7

RECOMMEND

APPROVED

DATE: 3/1/88

BY: P.D.M.

SECTION: 13412

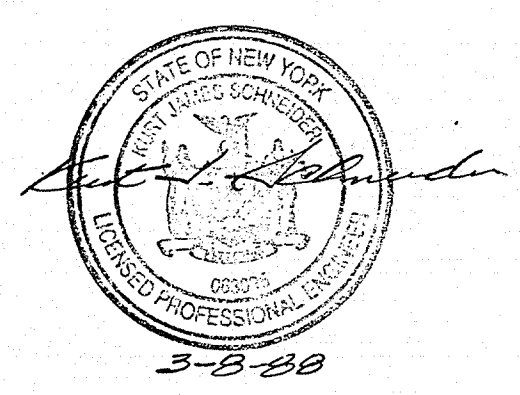
CLEVELAND WATER TANK

RECOMMEND

APPROVED

DATE: 3-22-88

BY: [Signature]



REVIEW FOR CONFORMANCE TO PLANS & SPECIFICATIONS	OPEN HOLES: N.A.	ERECTION REF: Y	WELD SPECS: AWWA D100-84	EIS: N.A.
BY: _____	DATE: _____	COMPLIES: _____	EXCEPTIONS NOTED: _____	



PRELIMINARY FOR APPROVAL	PITT-DES MOINES, INC. ENGINEERS - FABRICATORS - CONTRACTORS	
DATE: _____	VETERANS ADMINISTRATION MEDICAL CENTER ECCO GAL. HYDRO-PILLAR CANANDAIGUA, N.Y.	
APPROVED FOR RELEASE	DWG. PREPARED AT: 11	FABRICATED AT: _____
DATE: _____	BY: AP	DATE: 2-1-88
PREVIOUS PRINTS: _____	VOID CHECKED: JJP	DATE: 2-18-88
		DRAWING: E2AE
		CONTRACT: 5765

TRANS. No. _____