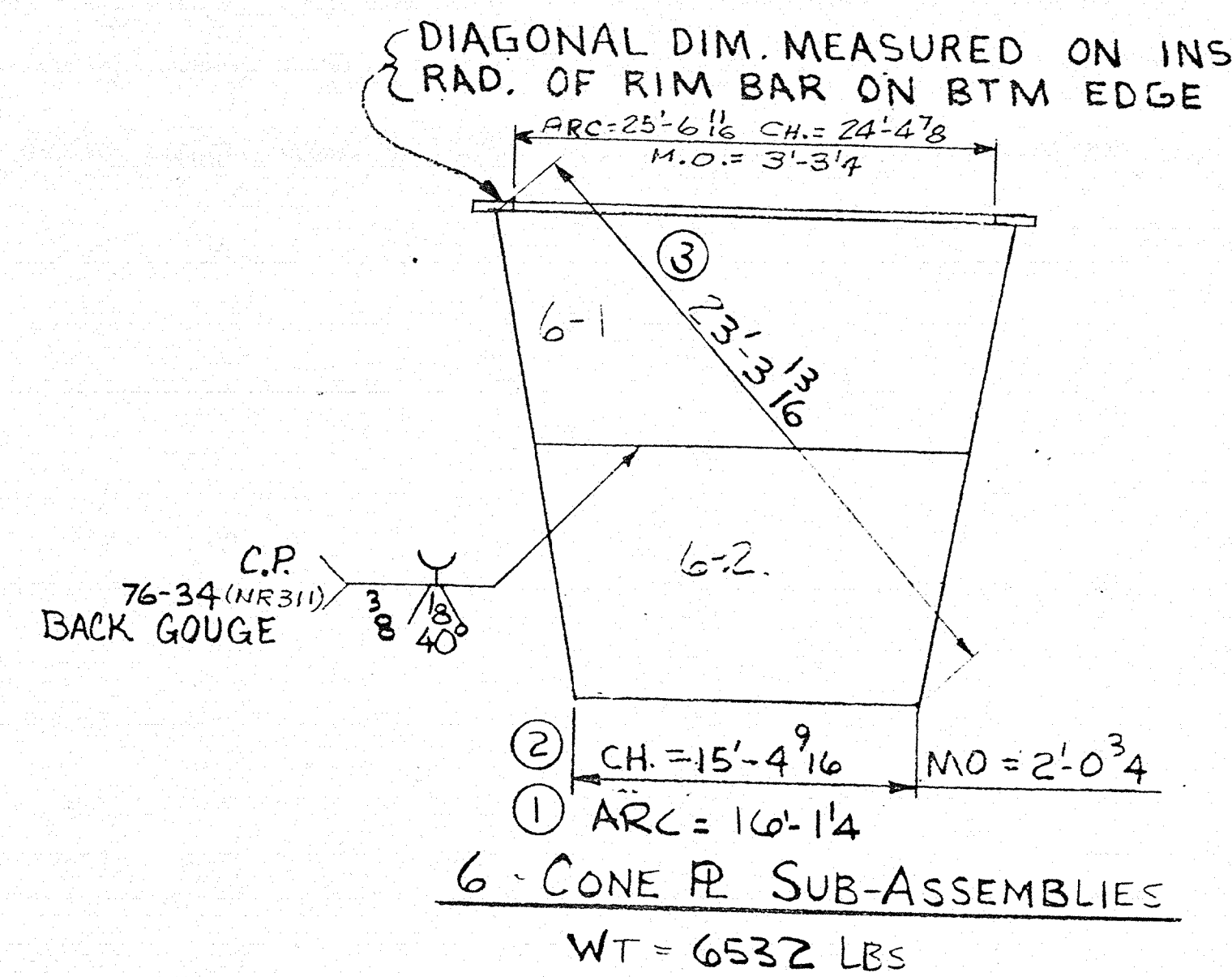
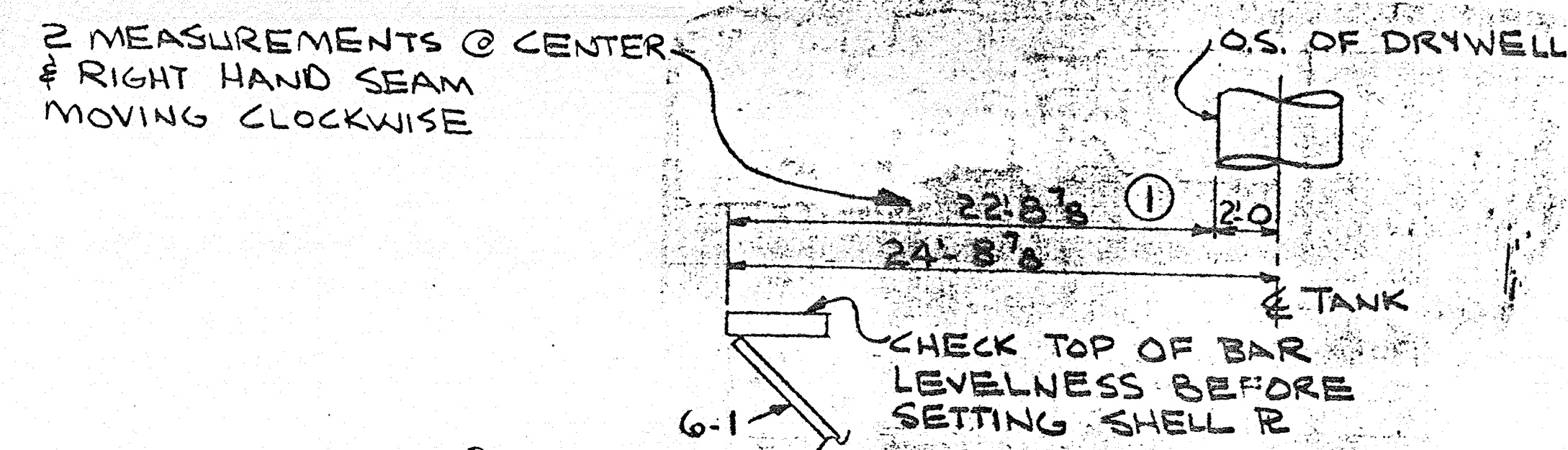


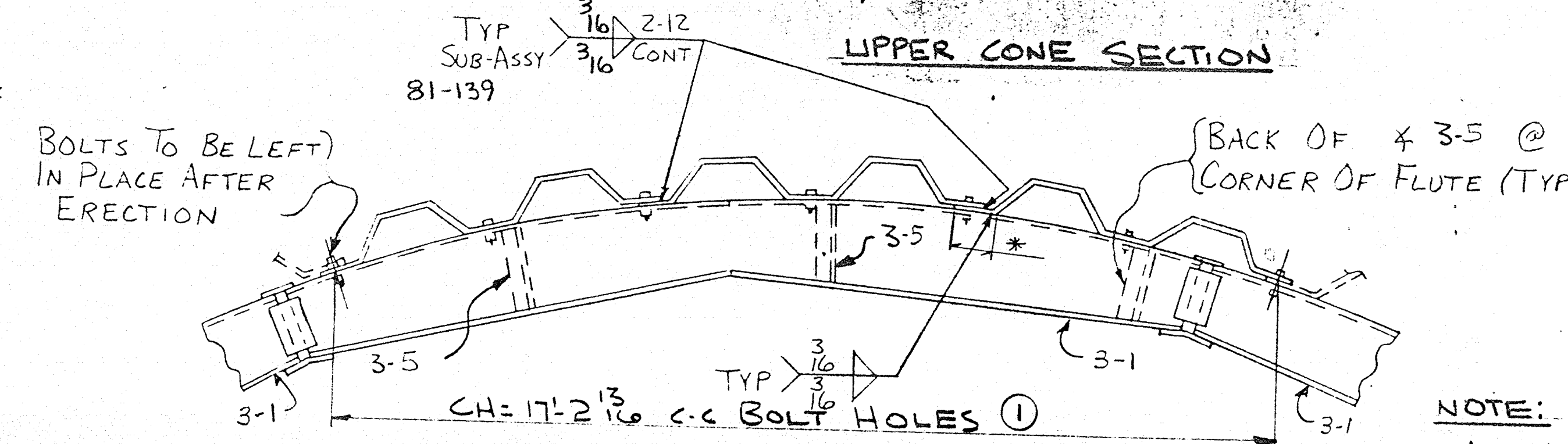
4- BOTTOM SUB-ASSEMBLIES  
WT= 1869 LBS.



6- CONE R SUB-ASSEMBLIES  
WT= 6532 LBS

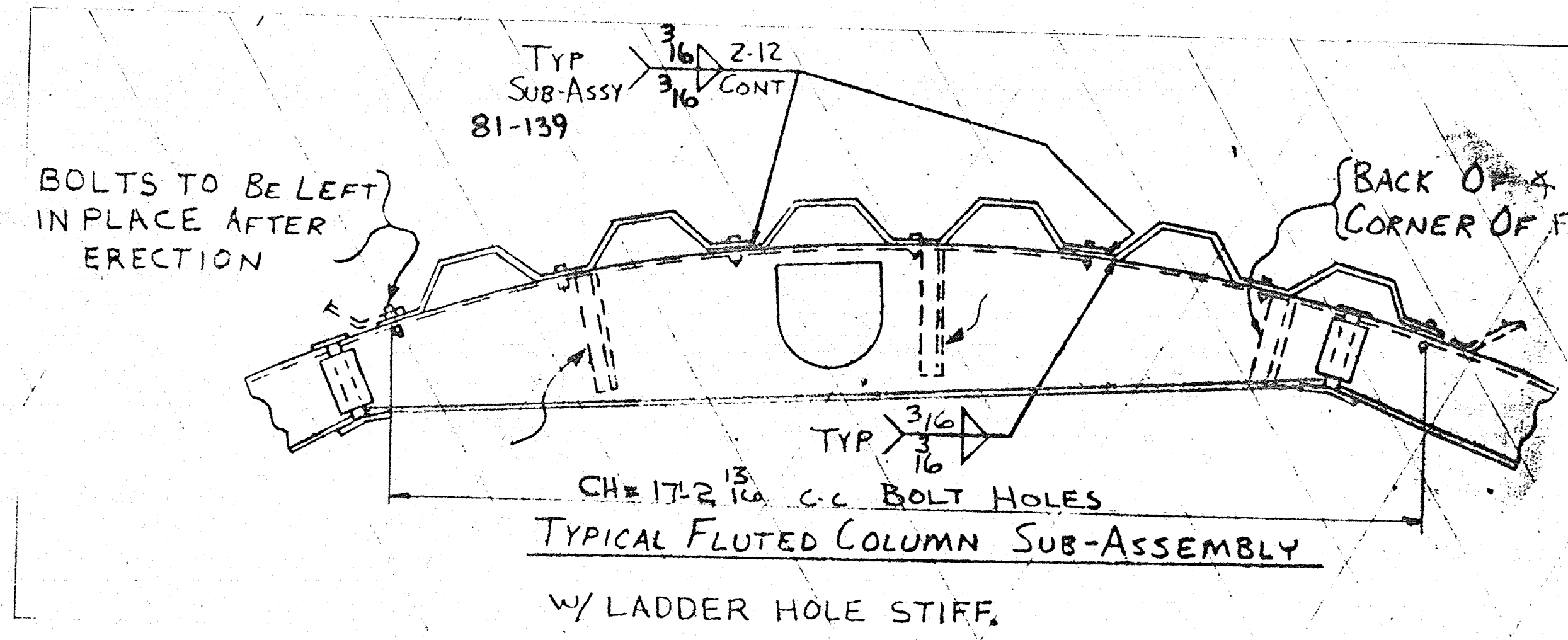


UPPER CONE SECTION



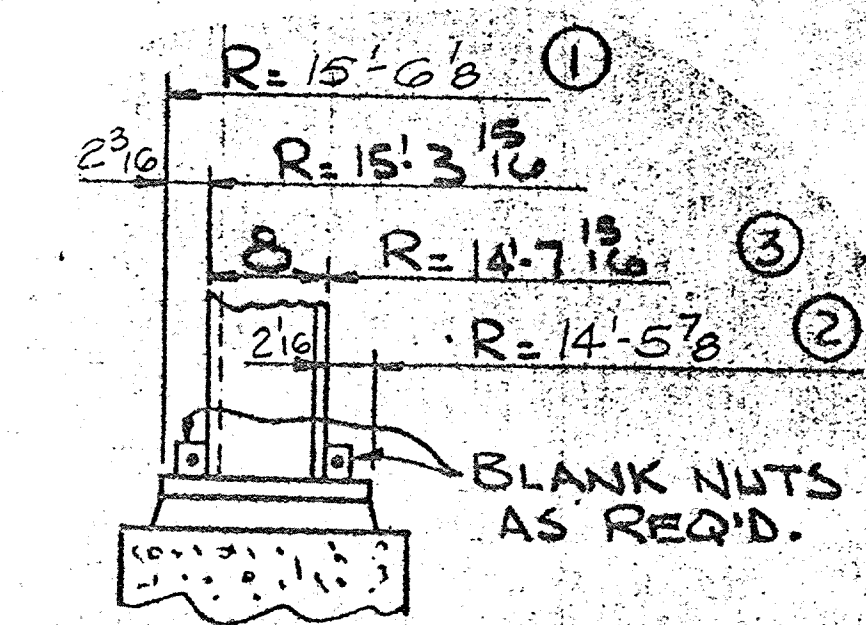
TYPICAL FLUTED COLUMN SUB-ASSEMBLY

\* WELD ONLY WHERE FLUTE RS. MAKES CONTACT WITH RING STIFFENER



TYPICAL FLUTED COLUMN SUB-ASSEMBLY

W/ LADDER HOLE STIFF.



BASE R & FLUTED R  
RADIAL DIMENSIONS

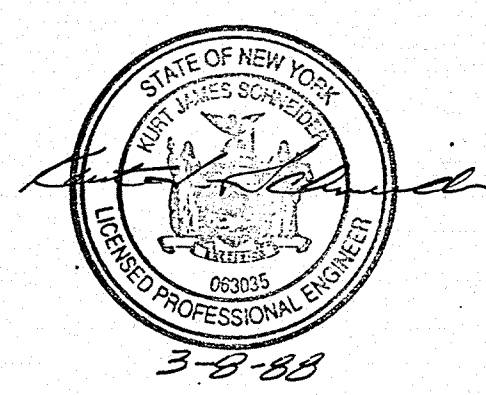
LOCATE CENTER OF TANK ON RISER PIER. ERECT BASE R'S BEFORE SETTING RISER SECTION. RADII ① & ② MEASURED AT MID POINT & RIGHT HAND SEAM OF BASE R WORKING CLOCKWISE. RADII ③ ON INSIDE OF FLUTE R. INSTALL BLANK NUTS AS REQ'D. TO LOCATE FLUTED COLUMN.

NOTE:

ALL ARC & CHORD DIMENSIONS SHOWN ON R'S ARE MEASURED TO I.S. EDGE OF R UNLESS NOTED. IF R IS SHOP BEVELED FOR WELDING, LOCATE THIS POINT WITH SMALL SQUARE OR WOODEN BLOCK

FOREMAN NOTE:

FIELD MEASURE DIMENSIONS AS SHOWN. RECORD MEASUREMENTS ON CHARTS ON SHEETS SA1 & SA2. WHEN ERECTION IS COMPLETE MAIL CHARTS TO YOUR C.P.M.



REVIEW FOR CONFORMANCE TO PLANS & SPECIFICATIONS BY: <i>[Signature]</i> TITLE: <i>[Signature]</i> DATE: <i>[Signature]</i> COMPLIES: <i>[Signature]</i> EXCEPTIONS NOTED: <i>[Signature]</i>		OPEN HOLES: <i>NCNE</i> ERECTION REF.: <i>+</i> WELD SPECS: <i>AWWADICO-84</i> EIS: <i>N.A.</i>		NO. REVISION DESCRIPTION BY DATE CHK DATE				PDM Pitt-Des Moines, Inc.		PRELIMINARY FOR APPROVAL NOT FOR CONSTRUCTION APPROVED FOR RELEASE PREVIOUS PRINTS VOID		PITT-DES MOINES, INC. ENGINEERS - FABRICATORS - CONTRACTORS VETERANS ADMINISTRATION MEDICAL CENTER 500 M GAL HYDROPILLAR CANANDAIGUA, N.Y. GROUND SUB-ASSY. DWG. PREPARED AT: <i>11</i> BY: <i>AF</i> DATE: <i>2-3-83</i> DRAWN: <i>AF</i> DATE: <i>2-3-83</i> CHECKED: <i>JJB</i> DATE: <i>2-18-88</i> DRAWING: <i>E3B</i> CONTRACT: <i>57658</i>			
---	--	--	--	---	--	--	--	------------------------------	--	--	--	--	--	--	--

500 M HP (5)

BRUNING 40-21 67975

FORM # 18100-1/83

TRANS. No.