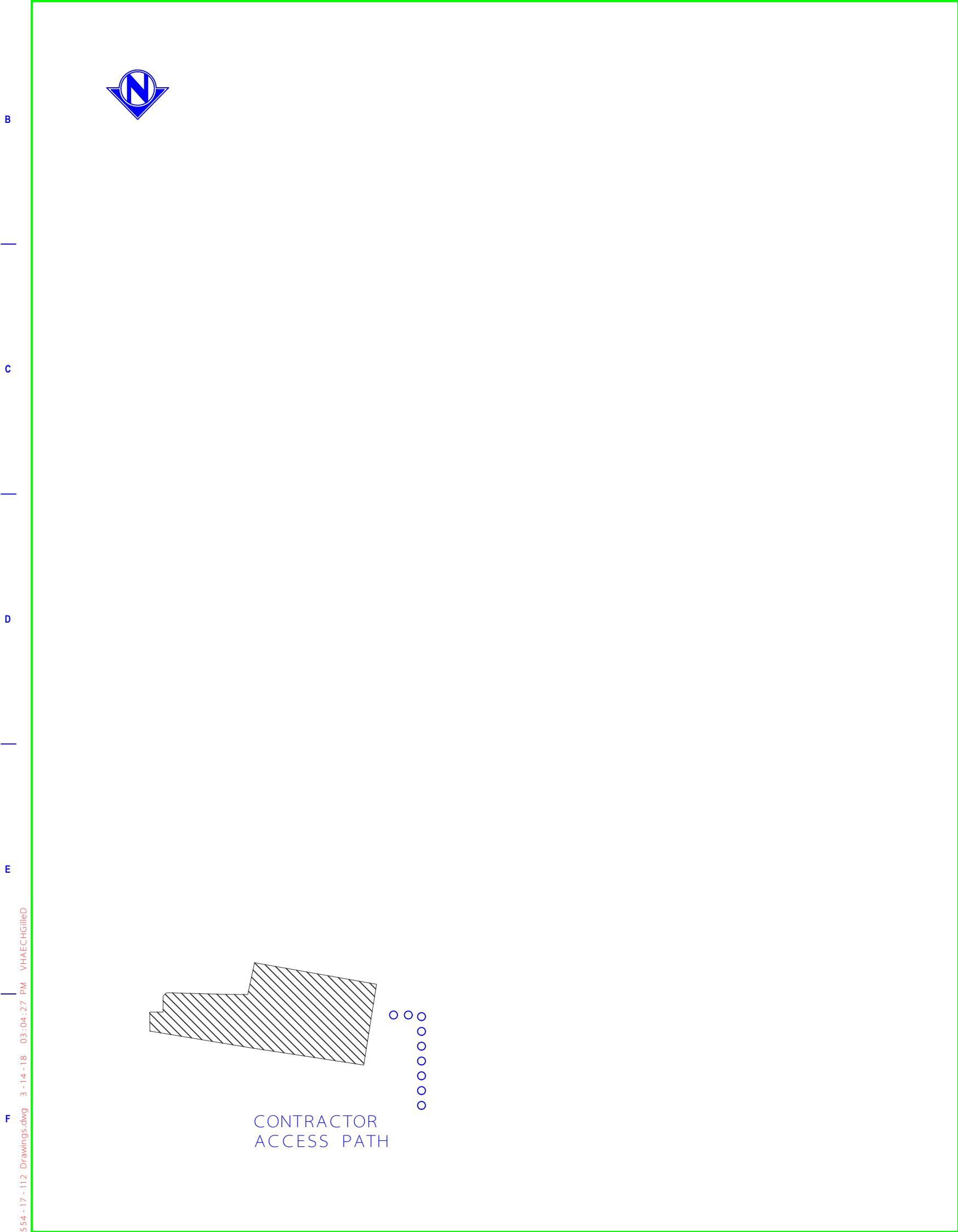
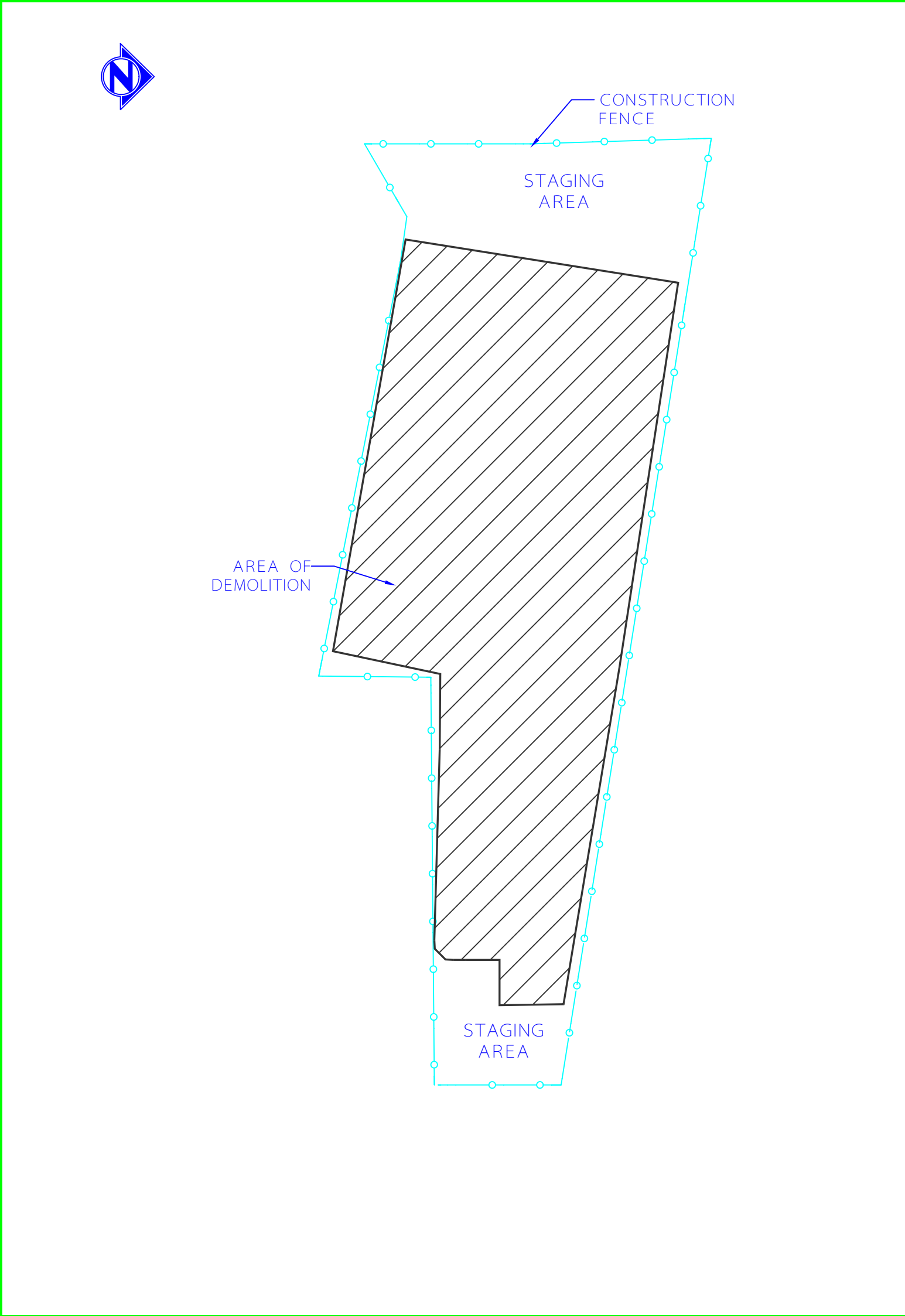


ARCHITECTURE ENGINEERING CONSTRUCTION  
Demolish Building C & Replace with Parking  
PROJECT 554-17-112

## SITE PLAN



LOCATION DETAIL	
1	1
2	2
3	3
4	4
5	5
6	6
7	7
8	8
9	9
10	10
11	11
12	12
13	13
14	14
15	15
16	16
17	17
18	18
19	19
20	20
21	21
22	22
23	23
24	24
25	25
26	26
27	27
28	28
29	29
30	30
31	31
32	32
33	33
34	34
35	35
36	36
37	37
38	38
39	39
40	40
41	41
42	42
43	43
44	44
45	45
46	46
47	47
48	48
49	49
50	50
51	51
52	52
53	53
54	54
55	55
56	56
57	57
58	58
59	59
60	60
61	61
62	62
63	63
64	64
65	65
66	66
67	67
68	68
69	69
70	70
71	71
72	72
73	73
74	74
75	75
76	76
77	77
78	78
79	79
80	80
81	81
82	82
83	83
84	84
85	85
86	86
87	87
88	88
89	89
90	90
91	91
92	92
93	93
94	94
95	95
96	96
97	97
98	98
99	99
100	100



## INDEX OF DRAWINGS

[illegible]

## INTERIM LIFE SAFETY MEASURES (ILSM)

IF APPLICABLE:

HOT WORK PERMITS.

PERMITS MUST BE OBTAINED 24 HOURS PRIOR TO COMMENCEMENT OF WORK, WHENEVER POSSIBLE. ORIGINAL PERMIT TO BE POSTED WHERE WORK IS BEING PERFORMED; CONTRACTOR MUST RETURN PERMIT TO SAFETY OFFICE WHEN WORK IS COMPLETED.

FIRE WATCH. CONTRACTOR MUST INITIAL, DATE AND TIME EVERY 30 MINUTES AFTER HOT WORK HAS STARTED.

SPRINKLER WORK. CONTRACTOR TO OBTAIN HOT WORK PERMIT PRIOR TO ANY WORK CONSISTING OF CUTTING, WELDING, SOLDERING, BRAZING, ETC IS PERFORMED OR WHEN SPRINKLER SYSTEM IS COMPROMISED FOR MORE THAN FOUR (4) HOURS.

CONTRACTOR TO PROVIDE WARNING SIGNAGE AND DIRECTIONAL SIGNAGE THAT SHALL BE POSTED IN CONSTRUCTION AREA WHILE WORK IS PERFORMED.

CONFINED SPACE. CONTRACTOR TO OBTAIN CONFINED SPACE PERMIT PRIOR TO ENTRY INTO MECHANICAL CHASE. ENSURE IT IS APPROVED BY VA SAFETY DEPARTMENT AND COR.

IF APPLICABLE:

HOT WORK PERMITS.

PERMITS MUST BE OBTAINED 24 HOURS PRIOR TO COMMENCEMENT OF WORK, WHENEVER POSSIBLE. ORIGINAL PERMIT TO BE POSTED WHERE WORK IS BEING PERFORMED; CONTRACTOR MUST RETURN PERMIT TO SAFETY OFFICE WHEN WORK IS COMPLETED.

FIRE WATCH. CONTRACTOR MUST INITIAL, DATE AND TIME EVERY 30 MINUTES AFTER HOT WORK HAS STARTED.

SPRINKLER WORK. CONTRACTOR TO OBTAIN HOT WORK PERMIT PRIOR TO ANY WORK CONSISTING OF CUTTING, WELDING, SOLDERING, BRAZING, ETC IS PERFORMED OR WHEN SPRINKLER SYSTEM IS COMPROMISED FOR MORE THAN FOUR (4) HOURS.

CONTRACTOR TO PROVIDE WARNING SIGNAGE AND DIRECTIONAL SIGNAGE THAT SHALL BE POSTED IN CONSTRUCTION AREA WHILE WORK IS PERFORMED.

CONFINED SPACE. CONTRACTOR TO OBTAIN CONFINED SPACE PERMIT PRIOR TO ENTRY INTO MECHANICAL CHASE. ENSURE IT IS APPROVED BY VA SAFETY DEPARTMENT AND COR.

IF APPLICABLE:

HOT WORK PERMITS.

PERMITS MUST BE OBTAINED 24 HOURS PRIOR TO COMMENCEMENT OF WORK, WHENEVER POSSIBLE. ORIGINAL PERMIT TO BE POSTED WHERE WORK IS BEING PERFORMED; CONTRACTOR MUST RETURN PERMIT TO SAFETY OFFICE WHEN WORK IS COMPLETED.

FIRE WATCH. CONTRACTOR MUST INITIAL, DATE AND TIME EVERY 30 MINUTES AFTER HOT WORK HAS STARTED.

SPRINKLER WORK. CONTRACTOR TO OBTAIN HOT WORK PERMIT PRIOR TO ANY WORK CONSISTING OF CUTTING, WELDING, SOLDERING, BRAZING, ETC IS PERFORMED OR WHEN SPRINKLER SYSTEM IS COMPROMISED FOR MORE THAN FOUR (4) HOURS.

CONTRACTOR TO PROVIDE WARNING SIGNAGE AND DIRECTIONAL SIGNAGE THAT SHALL BE POSTED IN CONSTRUCTION AREA WHILE WORK IS PERFORMED.

CONFINED SPACE. CONTRACTOR TO OBTAIN CONFINED SPACE PERMIT PRIOR TO ENTRY INTO MECHANICAL CHASE. ENSURE IT IS APPROVED BY VA SAFETY DEPARTMENT AND COR.

IF APPLICABLE:

HOT WORK PERMITS.

PERMITS MUST BE OBTAINED 24 HOURS PRIOR TO COMMENCEMENT OF WORK, WHENEVER POSSIBLE. ORIGINAL PERMIT TO BE POSTED WHERE WORK IS BEING PERFORMED; CONTRACTOR MUST RETURN PERMIT TO SAFETY OFFICE WHEN WORK IS COMPLETED.

FIRE WATCH. CONTRACTOR MUST INITIAL, DATE AND TIME EVERY 30 MINUTES AFTER HOT WORK HAS STARTED.

SPRINKLER WORK. CONTRACTOR TO OBTAIN HOT WORK PERMIT PRIOR TO ANY WORK CONSISTING OF CUTTING, WELDING, SOLDERING, BRAZING, ETC IS PERFORMED OR WHEN SPRINKLER SYSTEM IS COMPROMISED FOR MORE THAN FOUR (4) HOURS.

CONTRACTOR TO PROVIDE WARNING SIGNAGE AND DIRECTIONAL SIGNAGE THAT SHALL BE POSTED IN CONSTRUCTION AREA WHILE WORK IS PERFORMED.

CONFINED SPACE. CONTRACTOR TO OBTAIN CONFINED SPACE PERMIT PRIOR TO ENTRY INTO MECHANICAL CHASE. ENSURE IT IS APPROVED BY VA SAFETY DEPARTMENT AND COR.

## PHASING

ALL WORK WILL BE PHASED AND APPROVED BY COR AND VA PERSONNEL. WORK TO TAKE PLACE DURING BUSINESS HOURS. IF WORK CAN NOT BE COMPLETED DURING BUSINESS HOURS WORK WILL BE SCHEDULED AT NIGHT OR ON WEEKENDS. CONTRACTOR TO COORDINATE EACH TASK AND PHASE WITH COR AND STAFF TWO (2) WEEKS IN ADVANCE.

VA PROJECT TEAM

<b>OWNER</b> VETERANS AFFAIRS VA ECHS MEDICAL CENTER 1055 CLERMONT STREET DENVER, CO 80220-3808	<b>OWNER'S CONTRACTING OFFICER</b> VISN 19 CONTRACTING OFFICER ROCKY MOUNTAIN CONSOLIDATED CO. 4100 E. MISSISSIPPI AVE, SUITE 900 GLENDALE, CO 80248
<b>DESIGN INTENT</b> FMS MARK BLEHM PH:303.399.8020 EXT. 3786	

<b>OWNER</b> VETERANS AFFAIRS VA ECHS MEDICAL CENTER 1055 CLERMONT STREET DENVER, CO 80220-3808	<b>OWNER'S CONTRACTING OFFICER</b> VISN 19 CONTRACTING OFFICER ROCKY MOUNTAIN CONSOLIDATED CO. 4100 E. MISSISSIPPI AVE, SUITE 900 GLENDALE, CO 80248
<b>DESIGN INTENT</b> FMS MARK BLEHM PH:303.399.8020 EXT. 3786	

FMS  
MARK BLEHM  
PH:303.399.8020 EXT. 3786

FMS  
MARK BLEHM  
PH:303.399.8020 EXT. 3786

[illegible][illegible]

ARCHITECT/ENGINEER OF RECORD

STAMP	

Office of  
Construction  
and Facilities  
Management

**VA** | U.S. Department  
of Veterans Affairs

Office of  
Construction  
and Facilities  
Management

**VA** | U.S. Department  
of Veterans Affairs

Drawing Title	
GENERAL INDEX	
Approved: Project Director	

Drawing Title	
GENERAL INDEX	
Approved: Project Director	

Phase	
DESIGN DEVELOPMENT	

Project Title		
Building C Demolish & Replace with Parking		
Location		
1055 Clermont St., Denver, CO, 80220		
Issue Date	Checked	Drawn
		Davey

Project Title		
Building C Demolish & Replace with Parking		
Location		
1055 Clermont St., Denver, CO, 80220		
Issue Date	Checked	Drawn
		Davey

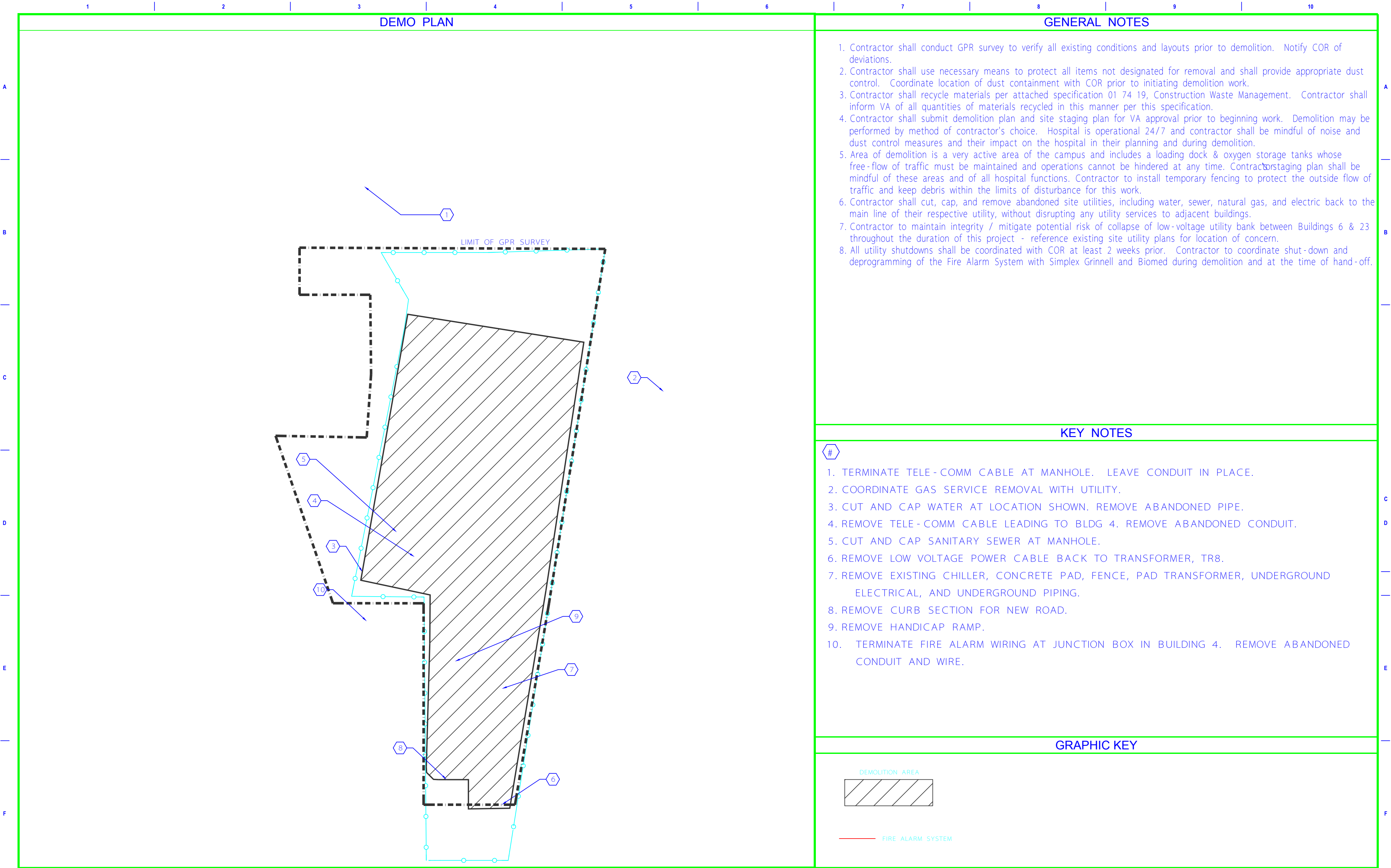
Project Title		
Building C Demolish & Replace with Parking		
Location		
1055 Clermont St., Denver, CO, 80220		
Issue Date	Checked	Drawn
		Davey

Project Number	554-17-112
Building Number	C
Drawing Number	GI001

Project Number	554-17-112
Building Number	C
Drawing Number	GI001

Project Number	554-17-112
Building Number	C
Drawing Number	GI001

Project Number	554-17-112
Building Number	C
Drawing Number	GI001



Revisions:

Date:

CONSULTANT

ARCHITECT/ENGINEER OF RECORD

STAMP

Office of Construction and Facilities Management

VA U.S. Department of Veterans Affairs

Drawing Title

DEMOLITION PLAN

Phase

DESIGN DEVELOPMENT

Project Title

Demolish Building C & Replace with Parking

Project Number

554-17-112

Building Number

C

Location

1055 Clermont St., Denver, CO, 80220

Issue Date

Issue date

Checked By

Chkd By

Drawn By

Drwn By

Drawing Number

CD101

The diagram, titled "PAVING PLAN", illustrates a proposed parking lot layout. The layout is bounded by a green line representing the "PERIMETER CURB". To the left of the main parking area is a light blue shaded region labeled "NEW SIDEWALK". The main parking area is filled with a light blue hatched pattern and is labeled "ASPHALT SURFACE". Within this area, ten rectangular spaces are outlined in red, labeled "10 NEW STANDARD PARKING SPACES". The layout is oriented vertically, with a north arrow pointing towards the top right corner. The plan is divided into sections by horizontal lines labeled A, B, C, D, E, and F on the left side, and vertical lines labeled 1, 2, and 3 on the top side.

4	5	6	7	8	9	10
GENERAL NOTES						
<p>1. Contractor shall verify all existing conditions and layouts prior to demolition. Notify COR of deviations.</p> <p>2. Contractor shall use necessary means to protect all items not designated for removal and shall provide appropriate dust control. Coordinate location of dust containment with COR prior to initiating demolition work.</p> <p>3. Contractor shall recycle materials per attached specification 01 74 19, Construction Waste Management. Contractor shall inform VA of all quantities of materials recycled in this manner per this specification.</p> <p>4. Direct water to existing storm water system and crown area to prevent creating any low points which could collect water.</p> <p>5. Drainage/Finished Grading Plan shall be submitted to COR for approval prior to starting work.</p>						

# PAVING DETAILS

- FOR TRENCH WIDTHS EXCEEDING 4' [1219mm] REFER TO VA STANDARD DETAIL 32 12 16-02 "TYPE 2 UTILITY TRENCH PATCH". FOR TRENCH WHERE PORTLAND CEMENT CONCRETE (PCC) PAVEMENT EXISTS, REFER TO 32 12 16-03 "TYPE 3 UTILITY TRENCH PATCH".
- 2" [50mm] MINIMUM OR THICKNESS OF EXISTING PAVEMENT WHICHEVER IS GREATER.
- BITUMINOUS SURFACE TREATMENT (CHIPSEAL) REQUIRED ONLY FOR LONGITUDINAL TRENCHES WITH WIDTHS GREATER THAN 6' [1829mm].
- 4" [100mm] MINIMUM ABC OR THICKNESS OF EXISTING GRANULAR BASE COURSE MATERIALS (E.G. ABC & SELECT MATERIAL) WHICHEVER IS GREATER.

REFER TO VA STANDARD DETAIL 32 12 16-04 "UTILITY TRENCH PAVEMENT PATCH NOTES" FOR ADDITIONAL INFORMATION.

## 1 TYPE 1 UTILITY TRENCH PATCH

NTS

- FOR TRENCH WIDTHS 4' [1219mm] OR LESS REFER TO VA STANDARD DETAIL 32 12 16-01 "TYPE 1 UTILITY TRENCH PATCH". FOR TRENCH WHERE PORTLAND CEMENT CONCRETE (PCC) PAVEMENT EXISTS, REFER TO 32 12 16-03 "TYPE 3 UTILITY TRENCH PATCH".
- 2" [50mm] MINIMUM OR THICKNESS OF EXISTING PAVEMENT WHICHEVER IS GREATER.
- BITUMINOUS SURFACE TREATMENT (CHIPSEAL) REQUIRED ONLY FOR LONGITUDINAL TRENCHES WITH WIDTHS GREATER THAN 6' [1829mm].
- 4" [100mm] MINIMUM ABC OR THICKNESS OF EXISTING GRANULAR BASE COURSE MATERIALS (E.G. ABC & SELECT MATERIAL) WHICHEVER IS GREATER.

PORTLAND CEMENT CONCRETE (PCC) THICKNESS EQUAL TO EXISTING.

REFER TO VA STANDARD DETAIL 32 12 16-04 "UTILITY TRENCH PAVEMENT PATCH NOTES" FOR ADDITIONAL INFORMATION.

## 2 TYPE 2 UTILITY TRENCH PATCH

NTS

- 2" [50mm] MINIMUM OR THICKNESS OF EXISTING GRAVEL.

## 3 GRAVEL PATCH

NTS

TYPICAL SECTION

## 5 CONCRETE SIDEWALK

NTS

CONCRETE VERTICAL CURB

## 4 CONCRETE CURB

NTS

PLAN

- EXPANSION JOINTS SHALL BE LOCATED WHERE SIDEWALK ABUTS CONCRETE DRIVEWAYS, CURB OR OTHER ADJACENT STRUCTURES.
- ONE-HALF INCH BITUMINOUS JOINT FILLER SHALL BE INSTALLED AT EXPANSION JOINT LOCATIONS AND SHALL EXTEND THE FULL DEPTH OF THE CONCRETE.
- 1" DEEP CONTRACTION JOINTS SHALL BE PLACED AT INTERVALS OF APPROXIMATELY 15' [4572mm] OR AT A SPACING THAT MATCHES THE ADJACENT CURB.
- FORMED CONTRACTION JOINTS SHALL BE FINISHED WITH A TOOL HAVING A 1/4" [6mm] RADIUS.
- SCORED JOINTS SHALL BE 1/4" [6mm] DEEP AND PLACED AT THE SPACING INDICATED FOR THE WIDTH OF SIDEWALK OR MATCH SCORED JOINTS OF ADJACENT CURB.
- CONCRETE SHALL BE FINISHED BY MEANS OF A FLOAT, STEEL TROWELLED AND BROOMED WITH A FINE BRUSH IN A TRANSVERSE DIRECTION.
- 1/4" DEEP SCORED JOINTS (TYP) SPACED AT 6' [1829mm] OR EQUAL TO SIDEWALK WIDTH.

### NOTES:

- ALL CONCRETE CURBS AND TRANSITIONS, SHALL HAVE A MINIMUM COMPRESSIVE STRENGTH OF 2,500 PSI.
- MAXIMUM SPACING ON SCORED JOINTS SHALL BE 15' [4572mm].
- 1/2" [13mm] THICK EXPANSION JOINTS SHALL BE LOCATED AT TANGENT POINTS IN CURB RETURNS, TRANSITIONS, AND AT A MAXIMUM OF 60' [1828.8cm] INTERVALS. EXPANSION MATERIAL SHALL ALSO BE PLACED BETWEEN CURBS AND ADJACENT STRUCTURES, SIDEWALKS, DRIVEWAYS AND CURB ACCESS RAMPS. THE 1/2" [13mm] JOINT FILLER SHALL EXTEND THE FULL DEPTH OF THE CONCRETE.
- CONCRETE SHALL BE FINISHED WITH A STEEL TROWEL FOLLOWED BY BRUSHING WITH A FINE BRUSH ALONG THE LENGTH OF THE CURB OR CURB AND GUTTER.
- SINGLE CURB MAY BE CONSTRUCTED BY THE USE OF FORMS OR MAY BE SLIP FORMED.
- ALL EXPOSED EDGES AND HAND TOOLED JOINTS SHALL BE FINISHED WITH A TOOL HAVING A 1/4" [6mm] RADIUS UNLESS A LARGER RADIUS IS INDICATED BY THE APPLICABLE STANDARD DETAIL OR PROJECT PLANS.
- FOR REVEALS OF 6" [152mm] TO LESS THAN 8" [203mm].
- FOR REVEALS OF 8" [203mm] TO 10" [254mm].

CONSULTANT	ARCHITECT/ENGINEER OF RECORD	STAMP	<div>Office of Construction and Facilities Management</div> <div>  <div>U.S. Department of Veterans Affairs</div> </div>	Drawing Title	Phase	Project Title	Project Number
				PAVING PLAN	DESIGN DEVELOPMENT	Demolish Building C & Replace with Parking	554-17-112
			Approved: Project Director		Location	Building Number C	Drawing Number
					1055 Clermont St., Denver, CO, 80220		CP101
					<div>Issue Date</div> <div>Issue date</div>	<div>Checked</div> <div>Chkd By</div>	<div>Drawn</div> <div>Drawn By</div>