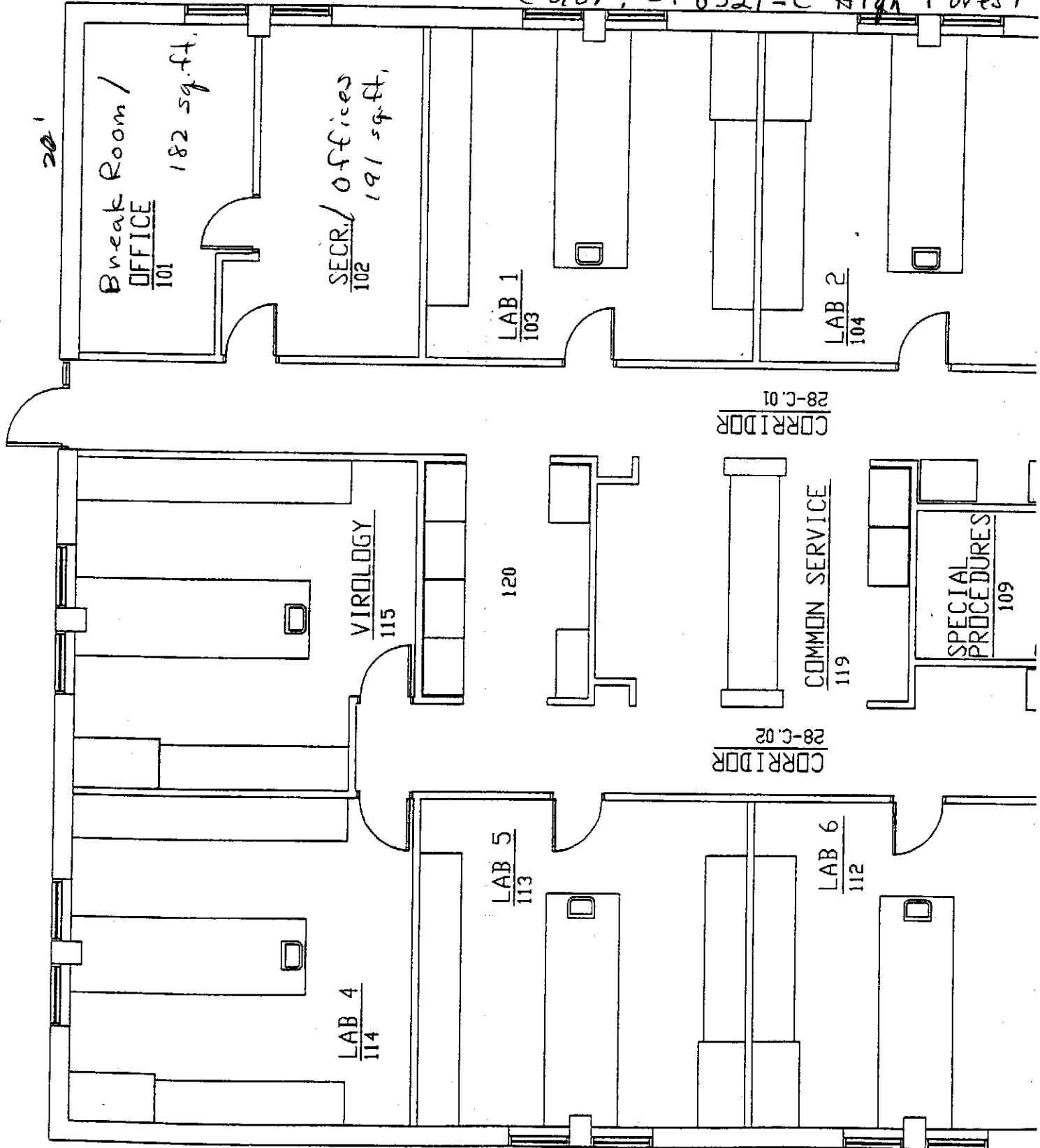


Research BLDG #28

Rooms # 101 + 102

Centiva 6" x 36" Vinyl Plank
Color: CP6321-C High Forest

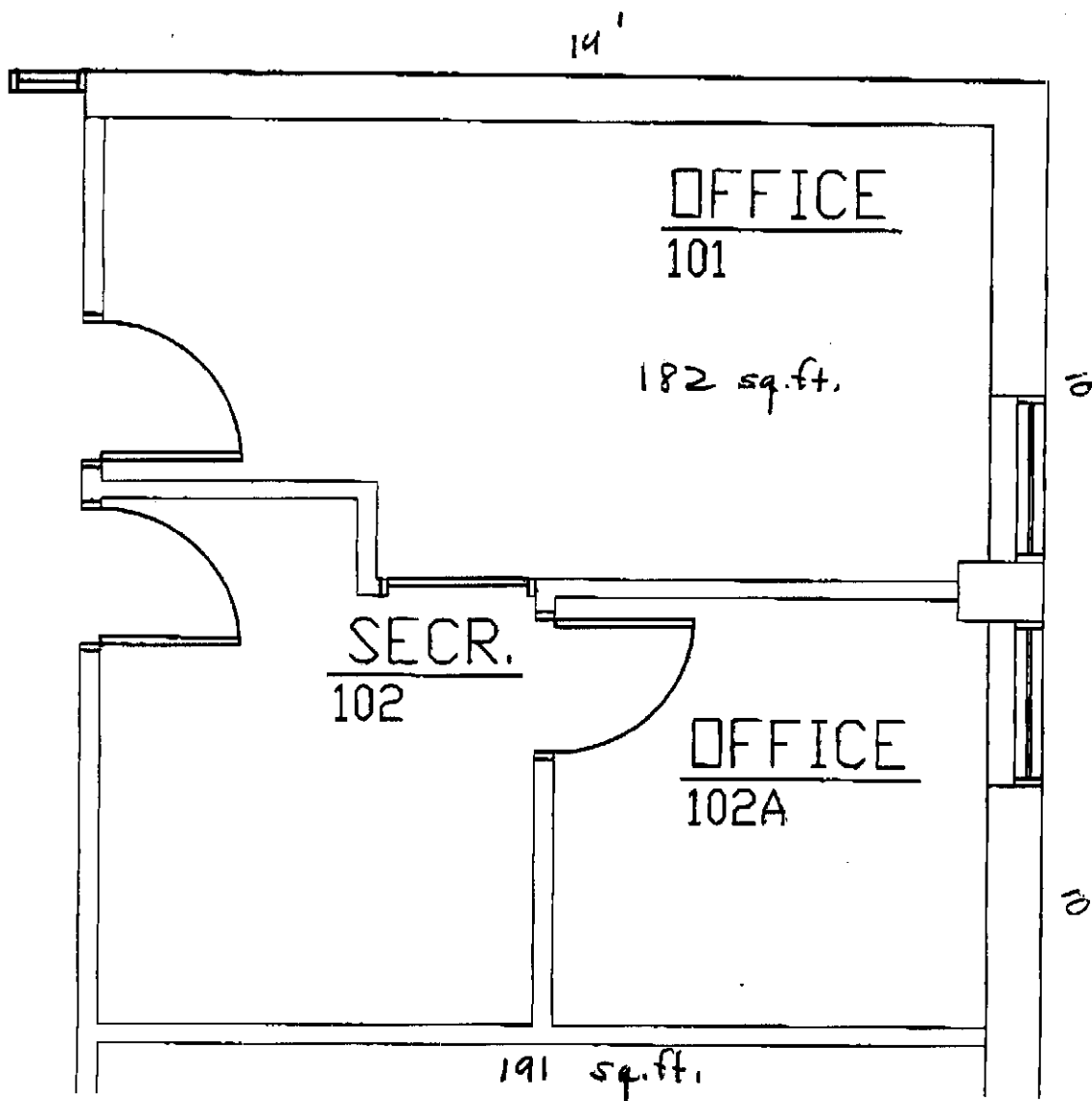
[140' 4"
Vinyl Base]



Bldg .28
Research
 $\frac{1}{4}'' = 1'$

Research

- Rms = 101, 102, 102A
- A. Remove existing Carpet
 - B. Floor Prep
 - C. Install sheet vinyl



Johnsonite
"4" Vinyl Base
140' Lin. ft.

Centiva Plank
190
+ 190
380 sq. ft.

$\frac{1}{4}'' = 1'$