

**SITE WORK NOTES**

1. CONTRACTOR MUST VISIT THE SITE AND STUDY EXISTING PHYSICAL CONDITIONS, REVIEW CONTRACT DOCUMENTS, MAKE TIMELY AND COMPLETE SUBMISSIONS BEFORE CONDUCTING ANY WORK.
2. CONTRACTOR IS COMPLETELY RESPONSIBL TO OBTAIN AND PAY FOR ALL FEDERAL, STATE, COUNTY, CITY, AND LOCAL PERMITS REQUIRED TO COMPLETE THE WORK. THIS SHALL INCLUDE ALL APPLICATIONS, FEES, AND PLAN SUBMITTALS AS REQUIRED FOR STORMWATER MANAGEMENT AND EROSION AND SEDIMENT CONTROL.
3. THE CONTRACTOR SHALL NOTIFY THE CONTRACTING OFFICER REPRESENTATIVE (COR) THREE DAYS PRIOR TO COMMENCEMENT OF ANY DEMOLITION OPERATIONS. THERE WILL BE NO DEMOLITION WORK STARTED UNLESS CONTRACTOR HAS MARKED ALL UNDERGROUND UTILITIES AND INSTALLED ALL SOIL EROSION & SEDIMENT CONTROL MEASURES ARE IN PLACE.
4. DEMOLITION WORK SHALL BE DONE IN A MANNER WHICH WILL NOT CAUSE UNNECESSARY INCONVENIENCE OR DANGER TO USERS OF THE ADJACENT SITE AND NOT INTERFERE WITH ITS OPERATION.
5. CONTRACTOR IS RESPONSIBLE FOR VERIFICATION OF ALL UTILITY INFORMATION AND COORDINATION WITH SERVICE PROVIDERS. THE CONTRACTOR IS RESPONSIBLE TO VERIFY WITH EACH UTILITY COMPANY AND OR AGENT WHO IS RESPONSIBLE TO REMOVE OR RELOCATE EACH EXISTING UTILITY.
6. IT SHALL BE THE RESPONSIBILITY OF THE CONTRACTOR TO BEAR THE COST FOR THE REMOVAL, TERMINATION, OR RELOCATION OF UTILITIES IF THE UTILITY COMPANY DOES NOT BEAR THE RESPONSIBILITY OF THE WORK OR THE COST.
7. CONTRACTOR IS RESPONSIBLE TO ENSURE PUBLIC PEDESTRIAN AND VEHICULAR ACCESS ROUTES TO FACILITIES AND BURIAL SITES SHALL BE PROVIDED AT ALL TIMES.
8. CONTRACTOR SHALL PROVIDE ALL TRAFFIC CONTROL TO PERFORM WORK. TRAFFIC CONTROL MEASURES SHALL BE IN CONFORMANCE WITH LOCAL AND STATE DOT STANDARDS AND SPECIFICATIONS. CONTRACTOR SHALL COORDINATE AND MAKE SUBMITTAL OF ALL TRAFFIC CONTROL MEASURES WITH COR AND CEMETERY DIRECTOR PRIOR TO INSTALLATION.
9. ALL STRUCTURES, UTILITIES, PAVEMENT AND TREES NOT DESIGNATED TO BE REMOVED SHALL BE PROTECTED DURING CONSTRUCTION. CONTRACTOR SHALL REPAIR AND / OR REPLACE ANY SITE ELEMENT THAT IS TO REMAIN THAT IS DAMAGED AT NO ADDITIONAL COST TO THE GOVERNMENT.
10. REMOVAL OF EXISTING CONCRETE, PAVEMENT, OR OTHER PAD AREAS SHALL INCLUDE ALL SOIL AND AGGREGATE BASE MATERIAL AREAS TO BE REMOVED SHALL BE SAW-CUT CLEAN, NEAT, AND TRUE TO LINE.
11. EXCESS AND OR UNSUITABLE MATERIALS FROM DEMOLITION / CONSTRUCTION ACTIVITIES SHALL BE PROPERLY DISPOSED OF OFF-SITE. CONTRACTOR SHALL PROVIDE ALL LABOR, EQUIPMENT, AND MATERIALS TO EXCAVATE, TRANSPORT, PLACE, AND DISPOSE OF SUCH MATERIAL AS PART OF THE WORK.

**SOIL EROSION & SEDIMENT CONTROL NOTES**

1. THE CONTRACTOR SHALL SECURE AND COMPLY WITH ALL PERMIT REQUIREMENTS FOR SOIL EROSION & SEDIMENT CONTROL PRIOR TO CONDUCTING ANY WORK.
2. THE CONTRACTOR SHALL INSTALL TEMPORARY SOIL EROSION AND SEDIMENTATION CONTROL MEASURES PRIOR TO COMMENCEMENT OF DEMOLITION OR CONSTRUCTION ACTIVITIES.
3. CONTRACTOR SHALL INSTALL CONSTRUCTION ACCESS GRAVEL ENTRANCE AT ALL LOCATIONS FROM CONSTRUCTION SITE ONTO PAVED ROADS. LOCATIONS SHALL BE IDENTIFIED BY CONTRACTOR IN PHASING PLAN.
4. EROSION AND ANY SEDIMENT FROM WORK ON THIS SITE SHALL BE CONTAINED WITHIN THE WORK AREA AND NOT BE ALLOWED TO COLLECT ON ANY OFF-SITE AREAS, OR DISCHARGE INTO THE STORM SEWER SYSTEM.
5. ALL SOIL, MISCELLANEOUS DEBRIS, OR OTHER MATERIALS SPILLED, DUMPED, OR OTHERWISE DEPOSITED ON PUBLIC STREETS, HIGHWAYS, SIDEWALKS, OR OTHER PUBLIC THOROUGHFARES DURING TRANSIT TO OR FROM THE SITE SHALL BE REMOVED PROMPTLY.
6. CONTRACTOR SHALL UTILIZE PORTABLE WHEEL WASH OR OTHER MEASURES TO MINIMIZE MUD TRACKING TO ADJACENT ROADS. THE CONTRACTOR SHALL SWEEP AS NEEDED TO REMOVE ANY SEDIMENT TRACKED OFF-SITE.
7. CONTRACTOR SHALL CONDUCT ALL EXCAVATION, EMBANKMENT, GRADING AND CLEAN-UP OPERATIONS IN A MANNER SUCH THAT SILTRACEOUS SOIL MATERIALS AND WATERBORNE OBJECTS ARE NOT DISCHARGED INTO ANY STORM SEWER, OR UNDERGROUND UTILITY SYSTEM.
8. THE CONTRACTOR SHALL MAINTAIN AND INSPECT SOIL EROSION & SEDIMENT CONTROL MEASURES THROUGHOUT THE COURSE OF THE PROJECT.
9. AFTER THE COMPLETION OF THE PROJECT, ALL SOIL EROSION CONTROL MEASURES ARE TO BE REMOVED BY THE CONTRACTOR AND THE AREAS RESTORED ONLY WHEN PERMITTED BY THE CONTRACTING OFFICER'S REPRESENTATIVE (COR).
10. ALL VIOLATIONS OF THE SOIL EROSION PLAN AND/OR ADDITIONAL MEASURES DEEMED NECESSARY SHALL BE CORRECTED BY THE CONTRACTOR WITHIN 24 HOURS OF NOTIFICATION BY THE COR OR REGULATORY AGENCY.

**DEMOLITION PLAN**





U.S. Department of Veterans Affairs  
National Cemetery Administration

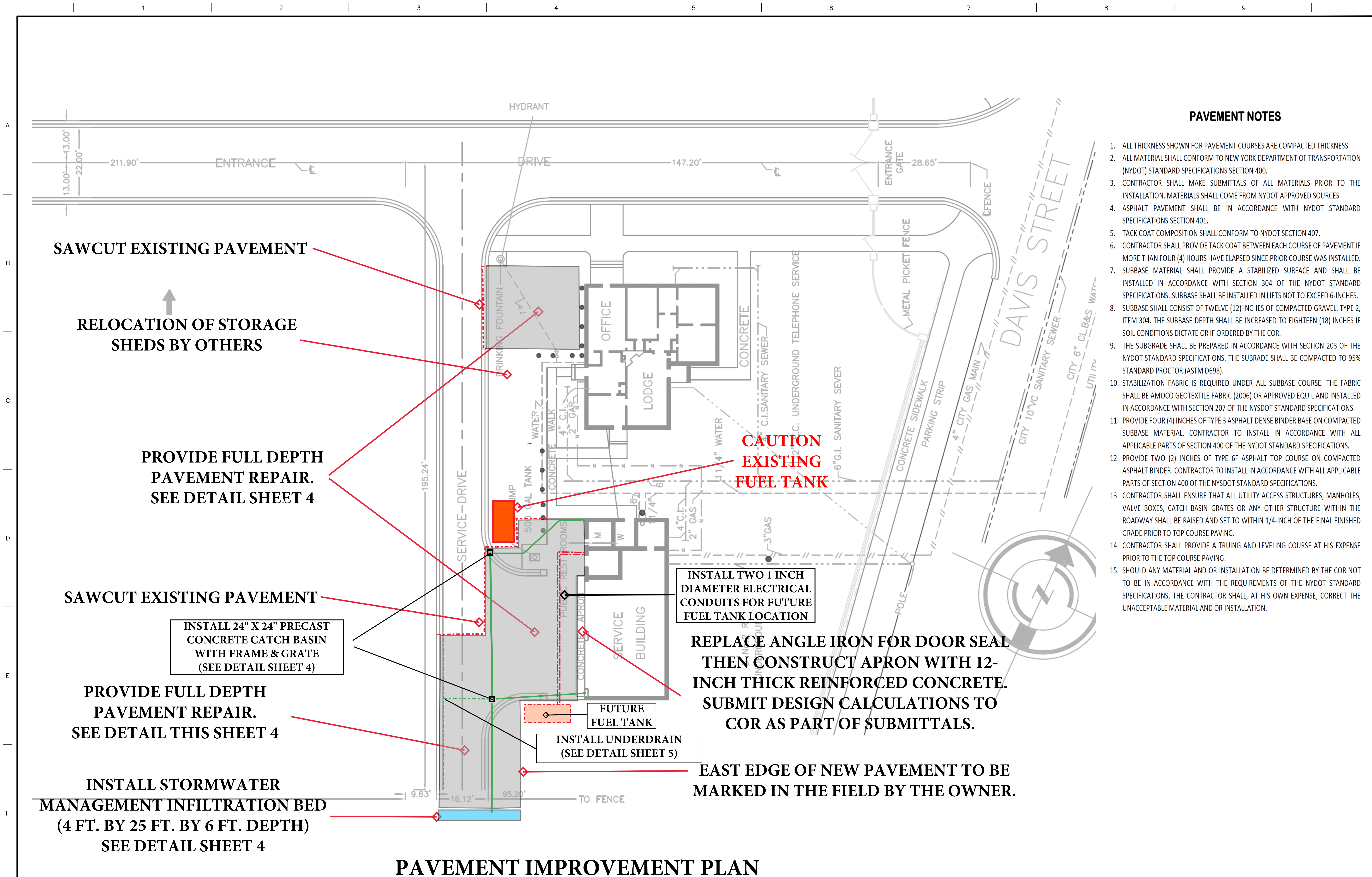
Drawing Title <b>DEMOLITION PLAN</b>	
Approved: Project Director	

Project Title <b>PAVEMENT REPAIR &amp; RELATED IMPROVEMENTS</b>	
Location <b>WOODLAWN NATIONAL CEMETERY</b>	
Date <b>FEB. 23, 2018</b>	Checked <b>RJH</b>

Project Number <b>803-NRM18-10</b>
Building Number
Drawing Number <b>803-NRM18-10-002</b>





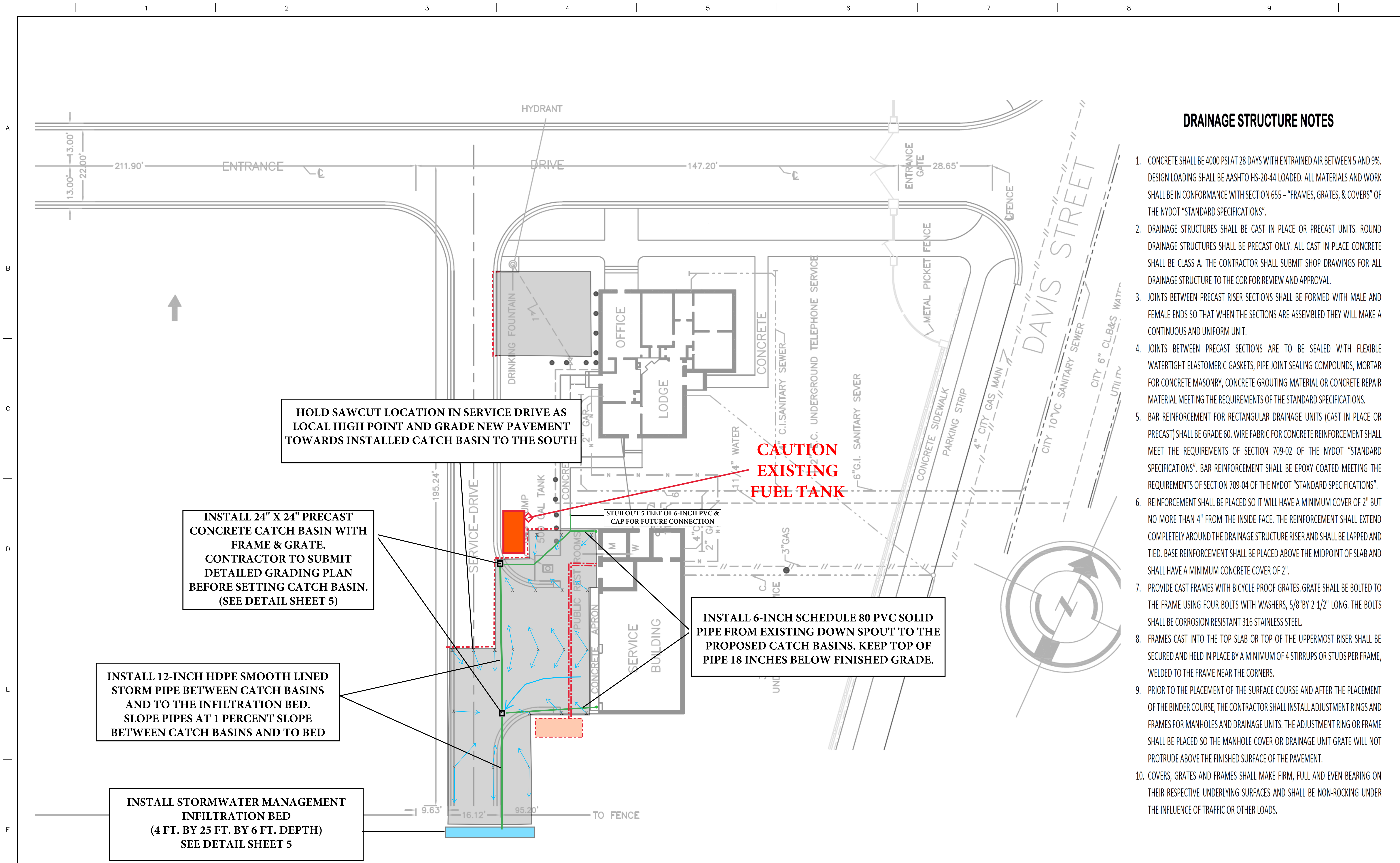


**PAVEMENT NOTES**

1. ALL THICKNESS SHOWN FOR PAVEMENT COURSES ARE COMPACTED THICKNESS.
2. ALL MATERIAL SHALL CONFORM TO NEW YORK DEPARTMENT OF TRANSPORTATION (NYDOT) STANDARD SPECIFICATIONS SECTION 400.
3. CONTRACTOR SHALL MAKE SUBMITTALS OF ALL MATERIALS PRIOR TO THE INSTALLATION. MATERIALS SHALL COME FROM NYDOT APPROVED SOURCES
4. ASPHALT PAVEMENT SHALL BE IN ACCORDANCE WITH NYDOT STANDARD SPECIFICATIONS SECTION 401.
5. TACK COAT COMPOSITION SHALL CONFORM TO NYDOT SECTION 407.
6. CONTRACTOR SHALL PROVIDE TACK COAT BETWEEN EACH COURSE OF PAVEMENT IF MORE THAN FOUR (4) HOURS HAVE ELAPSED SINCE PRIOR COURSE WAS INSTALLED.
7. SUBBASE MATERIAL SHALL PROVIDE A STABILIZED SURFACE AND SHALL BE INSTALLED IN ACCORDANCE WITH SECTION 304 OF THE NYDOT STANDARD SPECIFICATIONS. SUBBASE SHALL BE INSTALLED IN LIFTS NOT TO EXCEED 6-INCHES.
8. SUBBASE SHALL CONSIST OF TWELVE (12) INCHES OF COMPACTED GRAVEL, TYPE 2, ITEM 304. THE SUBBASE DEPTH SHALL BE INCREASED TO EIGHTEEN (18) INCHES IF SOIL CONDITIONS DICTATE OR IF ORDERED BY THE COR.
9. THE SUBGRADE SHALL BE PREPARED IN ACCORDANCE WITH SECTION 203 OF THE NYDOT STANDARD SPECIFICATIONS. THE SUBGRADE SHALL BE COMPACTED TO 95% STANDARD PROCTOR (ASTM D698).
10. STABILIZATION FABRIC IS REQUIRED UNDER ALL SUBBASE COURSE. THE FABRIC SHALL BE AMOCO GEOTEXTILE FABRIC (2006) OR APPROVED EQUIV AND INSTALLED IN ACCORDANCE WITH SECTION 207 OF THE NYSDOT STANDARD SPECIFICATIONS.
11. PROVIDE FOUR (4) INCHES OF TYPE 3 ASPHALT DENSE BINDER BASE ON COMPACTED SUBBASE MATERIAL. CONTRACTOR TO INSTALL IN ACCORDANCE WITH ALL APPLICABLE PARTS OF SECTION 400 OF THE NYDOT STANDARD SPECIFICATIONS.
12. PROVIDE TWO (2) INCHES OF TYPE 6F ASPHALT TOP COURSE ON COMPACTED ASPHALT BINDER. CONTRACTOR TO INSTALL IN ACCORDANCE WITH ALL APPLICABLE PARTS OF SECTION 400 OF THE NYSDOT STANDARD SPECIFICATIONS.
13. CONTRACTOR SHALL ENSURE THAT ALL UTILITY ACCESS STRUCTURES, MANHOLES, VALVE BOXES, CATCH BASIN GRATES OR ANY OTHER STRUCTURE WITHIN THE ROADWAY SHALL BE RAISED AND SET TO WITHIN 1/4-INCH OF THE FINAL FINISHED GRADE PRIOR TO TOP COURSE PAVING.
14. CONTRACTOR SHALL PROVIDE A TRUING AND LEVELING COURSE AT HIS EXPENSE PRIOR TO THE TOP COURSE PAVING.
15. SHOULD ANY MATERIAL AND OR INSTALLATION BE DETERMINED BY THE COR NOT TO BE IN ACCORDANCE WITH THE REQUIREMENTS OF THE NYDOT STANDARD SPECIFICATIONS, THE CONTRACTOR SHALL, AT HIS OWN EXPENSE, CORRECT THE UNACCEPTABLE MATERIAL AND OR INSTALLATION.

 	U.S. Department of Veterans Affairs National Cemetery Administration	Drawing Title <b>PAVEMENT IMPROVEMENT PLAN</b>		Project Title <b>PAVEMENT REPAIR &amp; RELATED IMPROVEMENTS</b>		Project Number <b>803-NRM18-10</b>		
		Approved: Project Director		Location <b>WOODLAWN NATIONAL CEMETERY</b>		Building Number		
		Date <b>FEB. 23, 2018</b>		Checked	Drawn <b>RJH</b>	Drawing Number <b>803-NRM18-10-003</b>		





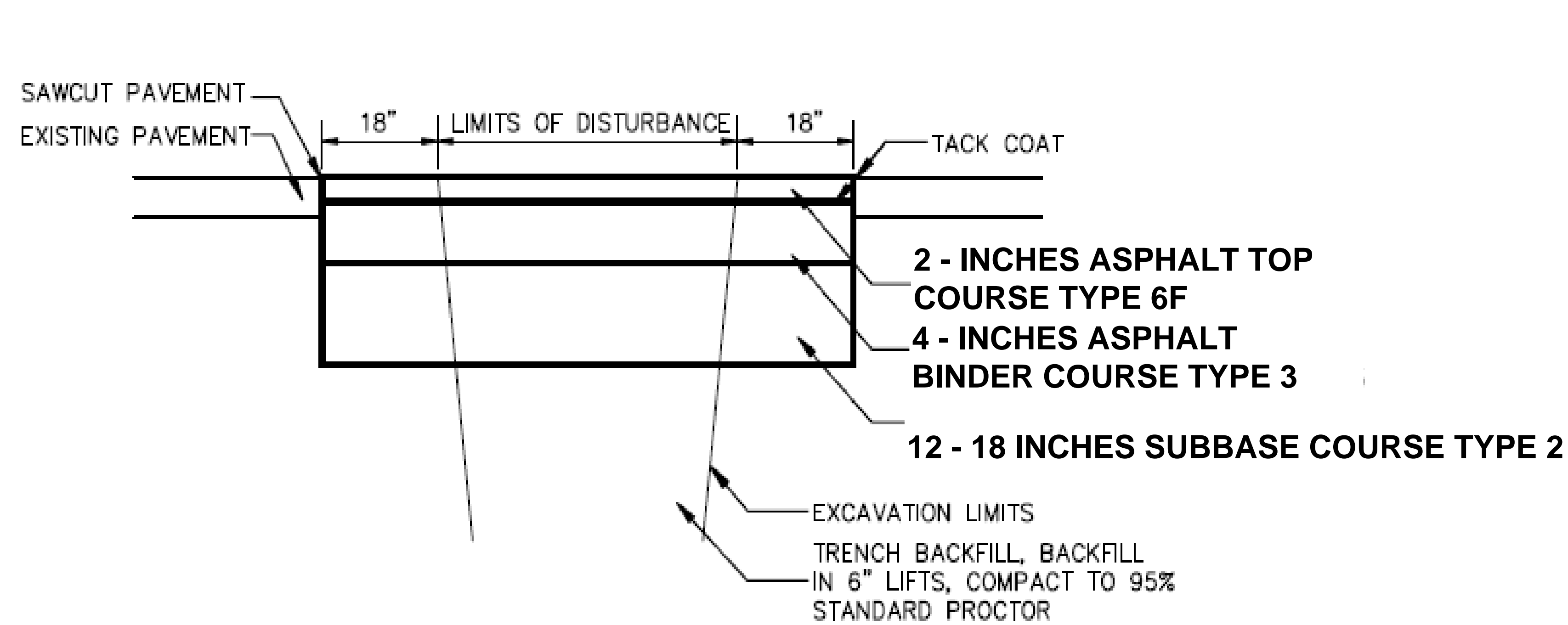
DRAINAGE STRUCTURE NOTES

- 1. CONCRETE SHALL BE 4000 PSI AT 28 DAYS WITH ENTRAINED AIR BETWEEN 5 AND 9%. DESIGN LOADING SHALL BE AASHTO HS-20-44 LOADED. ALL MATERIALS AND WORK SHALL BE IN CONFORMANCE WITH SECTION 655 – “FRAMES, GRATES, & COVERS” OF THE NYDOT “STANDARD SPECIFICATIONS”.
- 2. DRAINAGE STRUCTURES SHALL BE CAST IN PLACE OR PRECAST UNITS. ROUND DRAINAGE STRUCTURES SHALL BE PRECAST ONLY. ALL CAST IN PLACE CONCRETE SHALL BE CLASS A. THE CONTRACTOR SHALL SUBMIT SHOP DRAWINGS FOR ALL DRAINAGE STRUCTURE TO THE COR FOR REVIEW AND APPROVAL.
- 3. JOINTS BETWEEN PRECAST RISER SECTIONS SHALL BE FORMED WITH MALE AND FEMALE ENDS SO THAT WHEN THE SECTIONS ARE ASSEMBLED THEY WILL MAKE A CONTINUOUS AND UNIFORM UNIT.
- 4. JOINTS BETWEEN PRECAST SECTIONS ARE TO BE SEALED WITH FLEXIBLE WATERTIGHT ELASTOMERIC GASKETS, PIPE JOINT SEALING COMPOUNDS, MORTAR FOR CONCRETE MASONRY, CONCRETE GROUTING MATERIAL OR CONCRETE REPAIR MATERIAL MEETING THE REQUIREMENTS OF THE STANDARD SPECIFICATIONS.
- 5. BAR REINFORCEMENT FOR RECTANGULAR DRAINAGE UNITS (CAST IN PLACE OR PRECAST) SHALL BE GRADE 60. WIRE FABRIC FOR CONCRETE REINFORCEMENT SHALL MEET THE REQUIREMENTS OF SECTION 709-02 OF THE NYDOT “STANDARD SPECIFICATIONS”. BAR REINFORCEMENT SHALL BE EPOXY COATED MEETING THE REQUIREMENTS OF SECTION 709-04 OF THE NYDOT “STANDARD SPECIFICATIONS”.
- 6. REINFORCEMENT SHALL BE PLACED SO IT WILL HAVE A MINIMUM COVER OF 2" BUT NO MORE THAN 4" FROM THE INSIDE FACE. THE REINFORCEMENT SHALL EXTEND COMPLETELY AROUND THE DRAINAGE STRUCTURE RISER AND SHALL BE LAPPED AND TIED. BASE REINFORCEMENT SHALL BE PLACED ABOVE THE MIDPOINT OF SLAB AND SHALL HAVE A MINIMUM CONCRETE COVER OF 2".
- 7. PROVIDE CAST FRAMES WITH BICYCLE PROOF GRATES. GRATE SHALL BE BOLTED TO THE FRAME USING FOUR BOLTS WITH WASHERS, 5/8"BY 2 1/2" LONG. THE BOLTS SHALL BE CORROSION RESISTANT 316 STAINLESS STEEL.
- 8. FRAMES CAST INTO THE TOP SLAB OR TOP OF THE UPPERMOST RISER SHALL BE SECURED AND HELD IN PLACE BY A MINIMUM OF 4 STIRRUPS OR STUDS PER FRAME, WELDED TO THE FRAME NEAR THE CORNERS.
- 9. PRIOR TO THE PLACEMENT OF THE SURFACE COURSE AND AFTER THE PLACEMENT OF THE BINDER COURSE, THE CONTRACTOR SHALL INSTALL ADJUSTMENT RINGS AND FRAMES FOR MANHOLES AND DRAINAGE UNITS. THE ADJUSTMENT RING OR FRAME SHALL BE PLACED SO THE MANHOLE COVER OR DRAINAGE UNIT GRATE WILL NOT PROTRUDE ABOVE THE FINISHED SURFACE OF THE PAVEMENT.
- 10. COVERS, GRATES AND FRAMES SHALL MAKE FIRM, FULL AND EVEN BEARING ON THEIR RESPECTIVE UNDERLYING SURFACES AND SHALL BE NON-ROCKING UNDER THE INFLUENCE OF TRAFFIC OR OTHER LOADS.

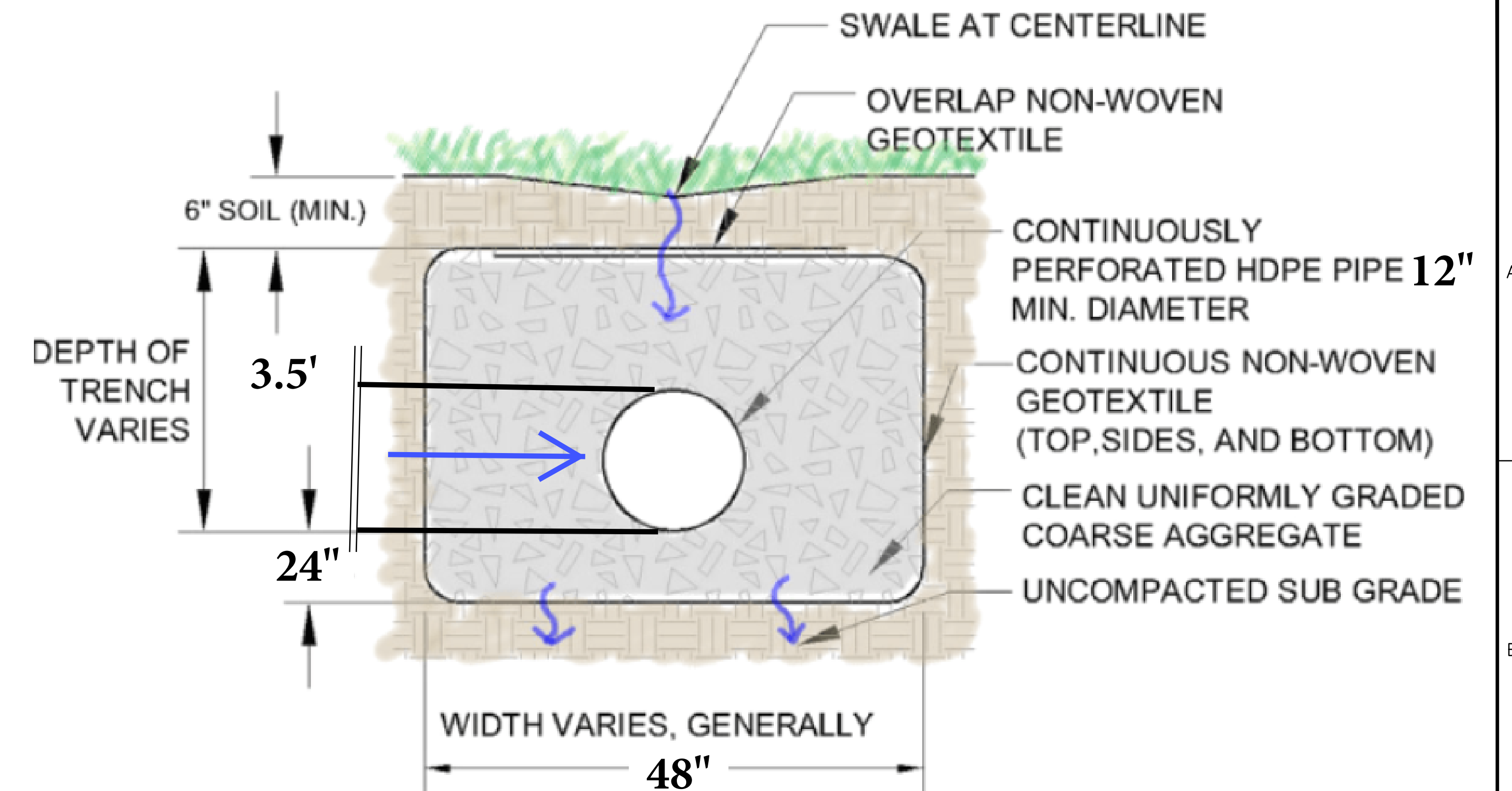
DRAINAGE & GRADING PLAN

--	--	--	--	--	--	--	--	--	--	--	--	--	--	--	--	--	--	--	--	--	--	--	--	--	--	--	--	--	--	--	--	--	--	--	--	--	--	--	--	--	--	--	--	--	--	--	--	--	--	--	--	--	--	--	--	--	--	--	--	--	--	--	--	--	--	--	--	--	--	--	--	--	--	--	--	--	--	--	--	--	--	--	--	--	--	--	--	--	--	--	--	--	--	--	--	--	--	--	--	--	--	--	--	--	--	--	--	--	--	--	--	--	--	--	--	--	--	--	--	--	--	--	--	--	--	--	--	--	--	--	--	--	--	--	--	--	--	--	--	--	--	--	--	--	--	--	--	--	--	--	--	--	--	--	--	--	--	--	--	--	--	--	--	--	--	--	--	--	--	--	--	--	--	--	--	--	--	--	--	--	--	--	--	--	--	--	--	--	--	--	--	--	--	--	--	--	--	--	--	--	--	--	--	--	--	--	--	--	--	--	--	--	--	--	--	--	--	--	--	--	--	--	--	--	--	--	--	--	--	--	--	--	--	--	--	--	--	--	--	--	--	--	--	--	--	--	--	--	--	--	--	--	--	--	--	--	--	--	--	--	--	--	--	--	--	--	--	--	--	--	--	--	--	--	--	--	--	--	--	--	--	--	--	--	--	--	--	--	--	--	--	--	--	--	--	--	--	--	--	--	--	--	--	--	--	--	--	--	--	--	--	--	--	--	--	--	--	--	--	--	--	--	--	--	--	--	--	--	--	--	--	--	--	--	--	--	--	--	--	--	--	--	--	--	--	--	--	--	--	--	--	--	--	--	--	--	--	--	--	--	--	--	--	--	--	--	--	--	--	--	--	--	--	--	--	--	--	--	--	--	--	--	--	--	--	--	--	--	--	--	--	--	--	--	--	--	--	--	--	--	--	--	--	--	--	--	--	--	--	--	--	--	--	--	--	--	--	--	--	--	--	--	--	--	--	--	--	--	--	--	--	--	--	--	--	--	--	--	--	--	--	--	--	--	--	--	--	--	--	--	--	--	--	--	--	--	--	--	--	--	--	--	--	--	--	--	--	--	--	--	--	--	--	--	--	--	--	--	--	--	--	--	--	--	--	--	--	--	--	--	--	--	--	--	--	--	--	--	--	--	--	--	--	--	--	--	--	--	--	--	--	--	--	--	--	--	--	--	--	--	--	--	--	--	--	--	--	--	--	--	--	--	--	--	--	--	--	--	--	--	--	--	--	--	--	--	--	--	--	--	--	--	--	--	--	--	--	--	--	--	--	--	--	--	--	--	--	--	--	--	--	--	--	--	--	--	--	--	--	--	--	--	--	--	--	--	--	--	--	--	--	--	--	--	--	--	--	--	--	--	--	--	--	--	--	--	--	--	--	--	--	--	--	--	--	--	--	--	--	--	--	--	--	--	--	--	--	--	--	--	--	--	--	--	--	--	--	--	--	--	--	--	--	--	--	--	--	--	--	--	--	--	--	--	--	--	--	--	--	--	--	--	--	--	--	--	--	--	--	--	--	--	--	--	--	--	--	--	--	--	--	--	--	--	--	--	--	--	--	--	--	--	--	--	--	--	--	--	--	--	--	--	--	--	--	--	--	--	--	--	--	--	--	--	--	--	--	--	--	--	--	--	--	--	--	--	--	--	--	--	--	--	--	--	--	--	--	--	--	--	--	--	--	--	--	--	--	--	--	--	--	--	--	--	--	--	--	--	--	--	--	--	--	--	--	--	--	--	--	--	--	--	--	--	--	--	--	--	--	--	--	--	--	--	--	--	--	--	--	--	--	--	--	--	--	--	--	--	--	--	--	--	--	--	--	--	--	--	--	--	--	--	--	--	--	--	--	--	--	--	--	--	--	--	--	--	--	--	--	--	--	--	--	--	--	--	--	--	--	--	--	--	--	--	--	--	--	--	--	--	--	--	--	--	--	--	--	--	--	--	--	--	--	--	--	--	--	--	--	--	--	--	--	--	--	--	--	--	--	--	--	--	--	--	--	--	--	--	--	--	--	--	--	--	--	--	--	--	--	--	--	--	--	--	--	--	--	--	--	--	--	--	--	--	--	--	--	--	--	--	--	--	--	--	--	--	--	--	--	--	--	--	--	--	--	--	--	--	--	--	--	--	--	--	--	--	--	--	--	--	--	--	--	--	--	--	--	--	--	--	--	--	--	--	--	--	--	--	--	--	--	--	--	--	--	--	--	--	--	--	--	--	--	--	--	--	--	--	--	--	--	--	--	--	--	--	--	--	--	--	--	--	--	--	--	--	--	--	--	--	--	--	--	--	--	--	--	--	--	--	--	--	--	--	--	--	--	--	--	--	--	--	--	--	--	--	--	--	--	--	--	--	--	--	--	--	--	--	--	--	--	--	--	--	--	--	--	--	--	--	--	--	--	--	--	--	--	--	--	--	--	--	--	--	--	--	--	--	--	--	--	--	--	--	--	--	--	--	--	--	--	--	--	--	--	--	--	--	--	--	--	--	--	--	--	--	--	--	--	--	--	--	--	--	--	--	--	--	--	--	--	--	--	--	--	--	--	--	--	--	--	--	--	--	--	--	--	--	--	--	--	--	--	--	--	--	--	--	--	--	--	--	--	--	--	--	--	--	--	--	--	--	--	--	--	--	--	--	--	--	--	--	--	--	--	--	--	--	--	--	--	--	--	--	--	--	--	--	--	--	--	--	--	--	--	--	--	--	--	--	--	--	--	--	--	--	--	--	--	--	--	--	--	--	--	--	--	--	--	--	--	--	--	--	--	--	--	--	--	--	--	--	--	--	--	--	--	--	--	--	--	--	--	--	--	--	--	--	--	--	--	--	--	--	--	--	--	--	--	--	--	--	--	--	--	--	--	--	--	--	--	--	--	--	--	--	--	--	--	--	--	--	--	--	--	--	--	--	--	--	--	--	--	--	--	--	--	--	--	--	--	--	--	--	--	--	--	--	--	--	--	--	--	--	--	--	--	--	--	--	--	--	--	--	--	--	--	--	--	--	--	--	--	--	--	--	--	--	--	--	--	--	--	--	--	--	--	--	--	--	--	--	--	--	--	--	--	--	--	--	--	--	--	--	--	--	--	--	--	--	--	--	--	--	--	--	--	--	--	--	--	--	--	--	--	--	--	--	--	--	--	--	--	--	--	--	--	--	--	--	--	--	--	--	--	--	--	--	--	--	--	--	--	--	--	--	--	--	--	--	--	--	--	--	--	--	--	--	--	--	--	--	--	--	--	--	--	--	--	--	--	--	--	--	--	--	--	--	--	--	--	--	--	--	--	--	--	--	--	--	--	--	--	--	--	--	--	--	--	--	--	--	--	--	--	--	--	--	--	--	--	--	--	--	--	--	--	--	--	--	--	--	--	--	--	--	--	--

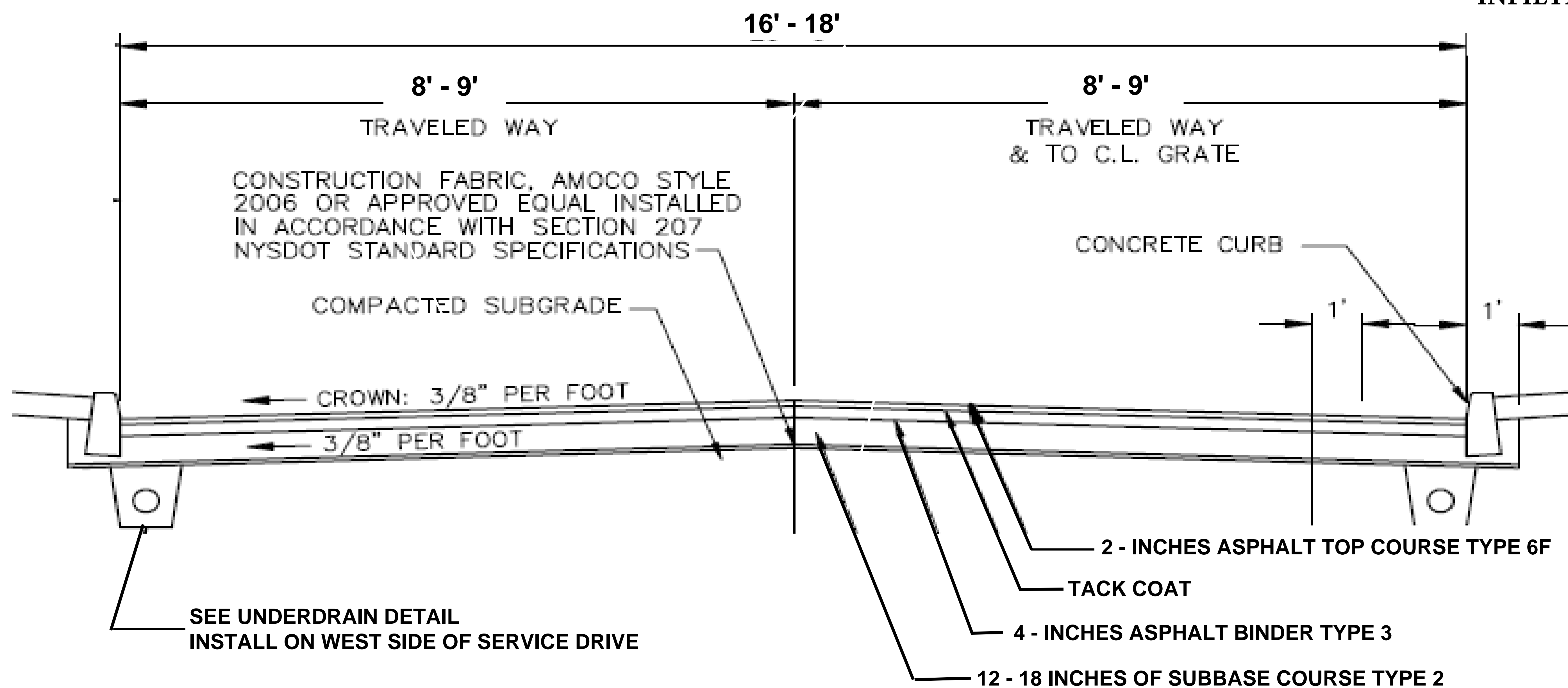




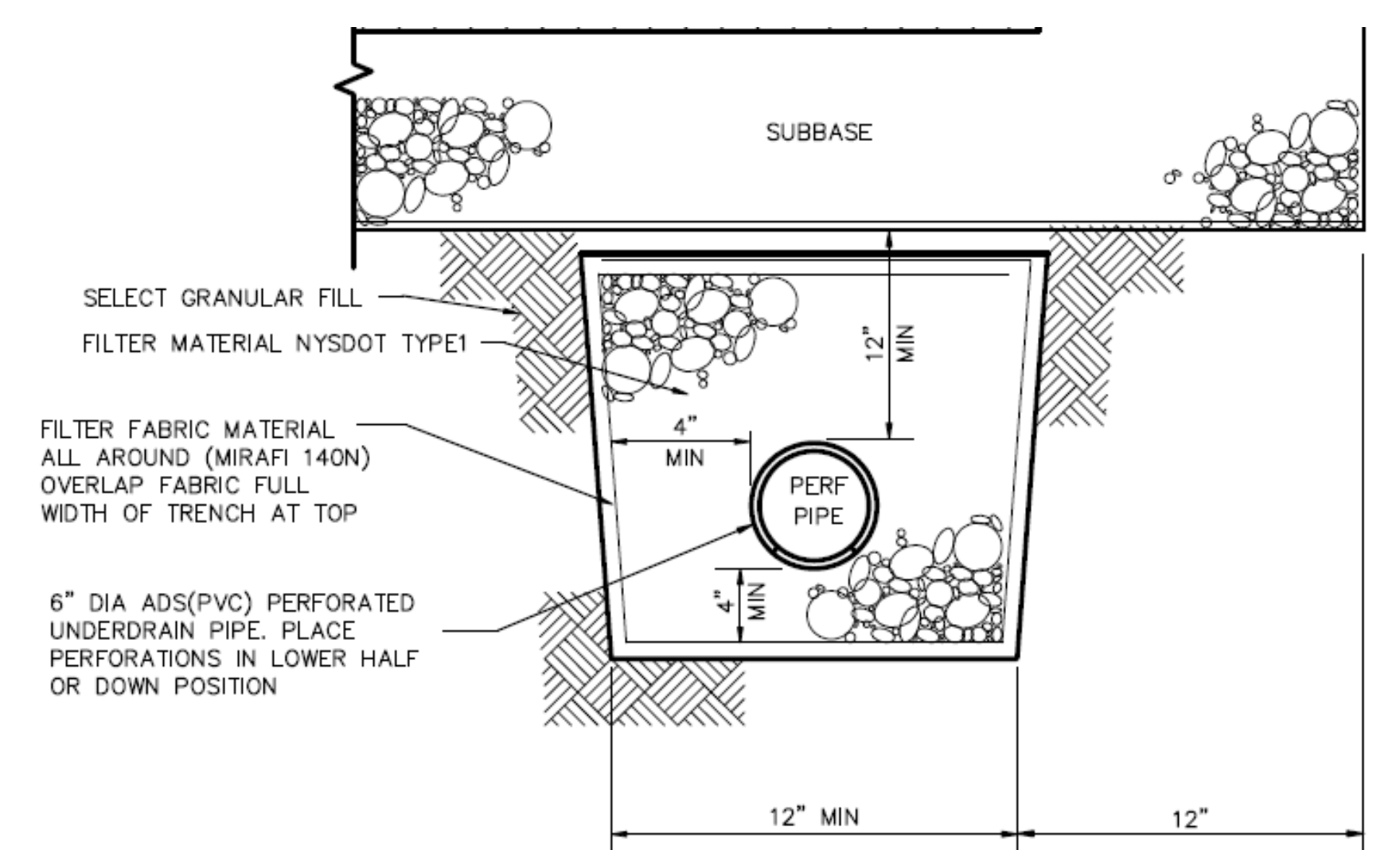
FULL DEPTH PAVEMENT REPAIR - OFF STREET



INFILTRATION BED DETAIL





FULL DEPTH PAVEMENT REPAIR  
SERVICE DRIVE



- NOTES:
1. PROVIDE AT LOCATIONS AS SHOWN ON THE PLANS, OR AS ORDERED BY THE ENGINEER DURING CONSTRUCTION.
  2. FIELD CONDITIONS FOUND DURING CONSTRUCTION SHALL DETERMINE ACTUAL INSTALLATION DEPTH.
  3. FINAL DETERMINATIONS RELATIVE TO PLACEMENT SHALL BE MADE BY HIGHWAY SUPERINTENDENT AND/OR TOWN ENGINEER. ALL DECISIONS SHALL BE STRICTLY ADHERED TO.

UNDERDRAIN DETAIL

SECTIONS & DETAILS

								U.S. Department of Veterans Affairs National Cemetery Administration		Drawing Title <b>SECTIONS &amp; DETAILS</b>		Project Title <b>PAVEMENT REPAIR &amp; RELATED IMPROVEMENTS</b>		Project Number <b>803-NRM18-10</b>			
										Approved: Project Director		Location <b>WOODLAWN NATIONAL CEMETERY</b>		Drawing Number <b>803-NRM18-10-005</b>			
												Date <b>FEB. 23, 2018</b>		Checked <b>RJH</b>			



