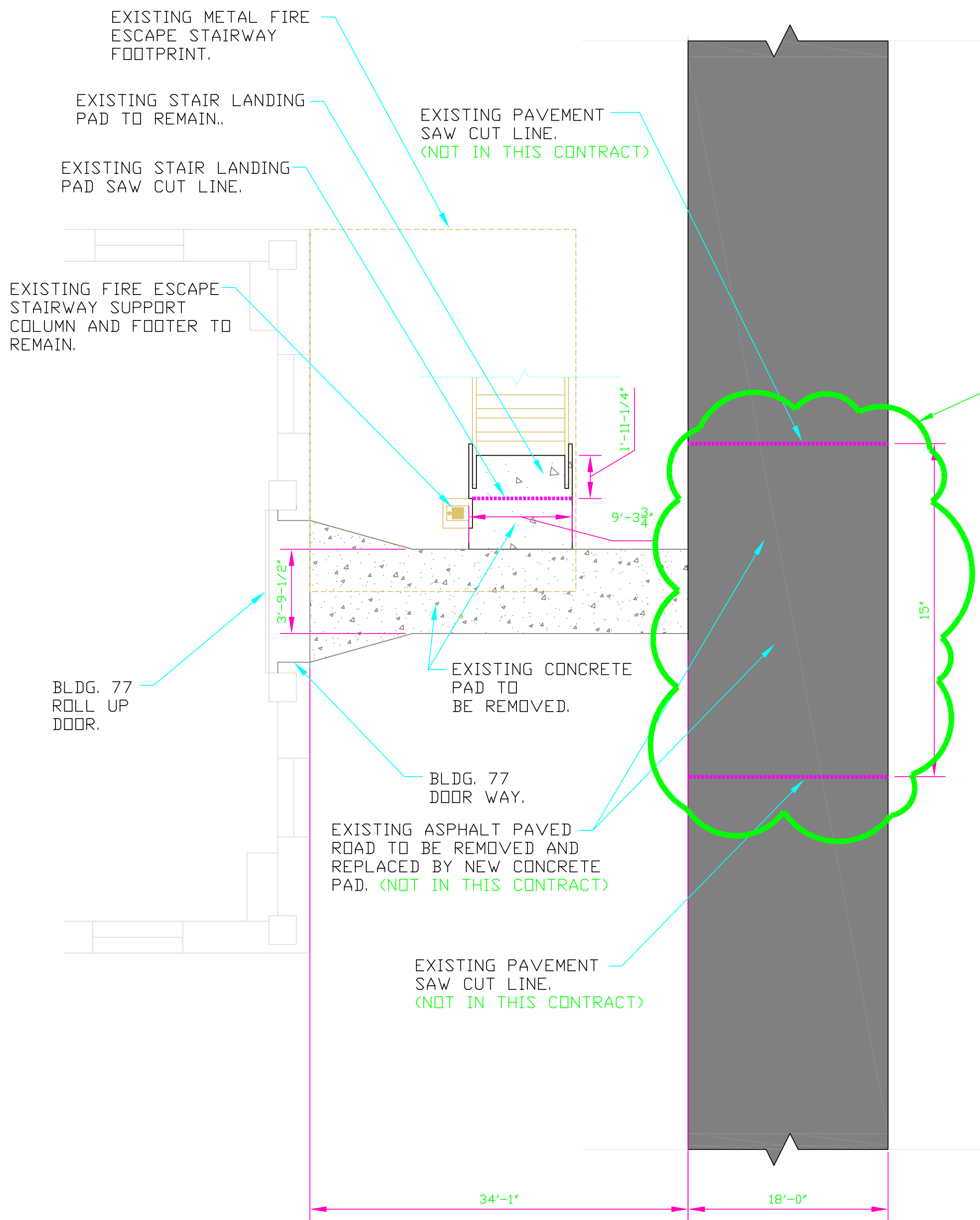


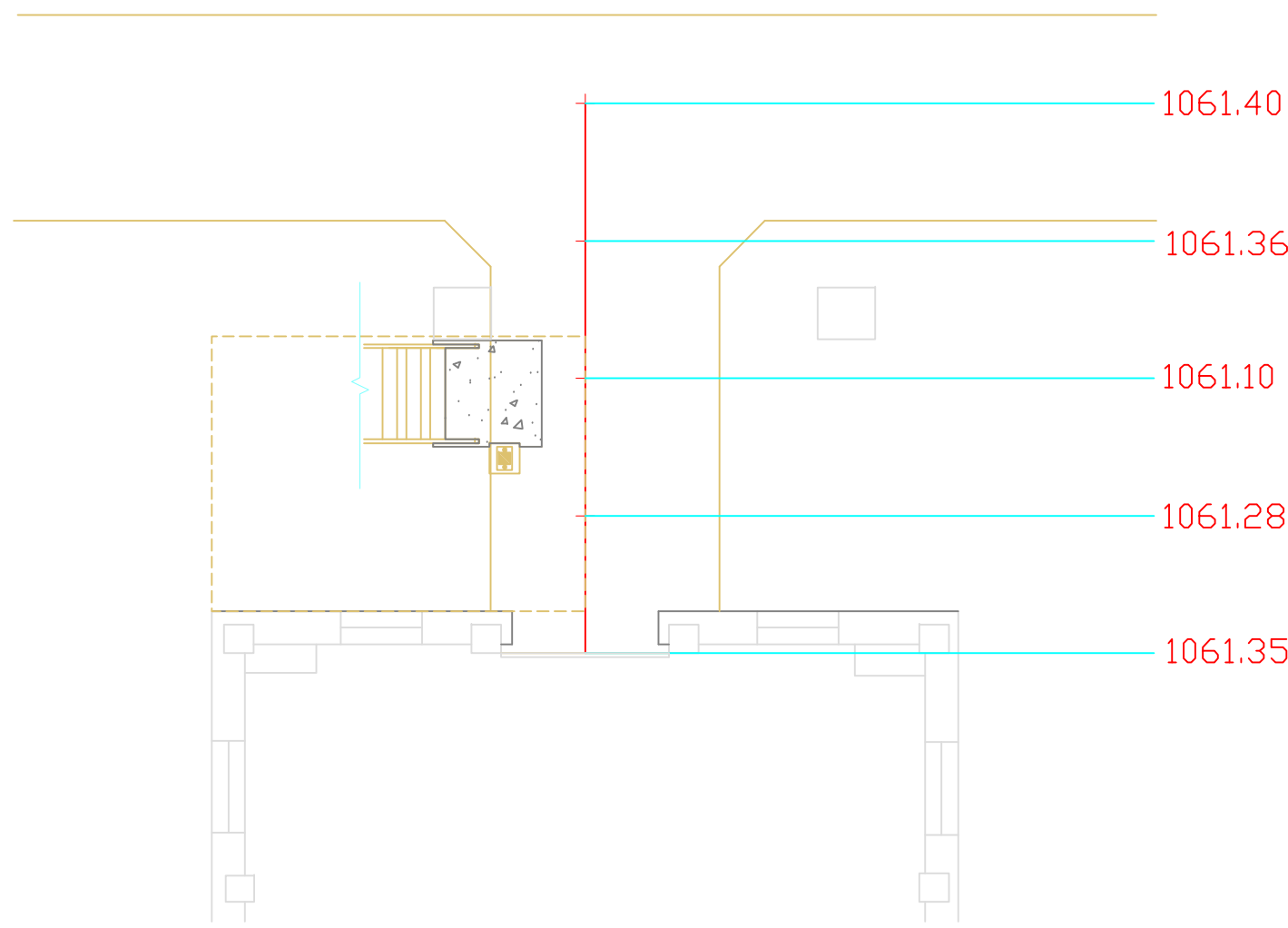
three inches = one foot  
one and one-half inches = one foot  
one inch = one foot  
three-quarters inch = one foot  
one-half inch = one foot  
three-eighths inch = one foot  
one-quarter inch = one foot  
one-eighth inch = one foot



BLDG. 77 PLAN VIEW OF EXISTING CONCRETE PAD TO BE REMOVED.  
NO SCALE

LEGEND (ALL SHEETS)

	EXISTING UNDISTURBED SOIL ELEVATION.		EXISTING CONCRETE PAD.
	EXISTING ASPHALT PAVEMENT ELEVATION.		
	NEW 6" CONCRETE PAD ELEVATION.		
	EXISTING GRAVEL ROADBED.		
	NEW GRAVEL ROADBED.		
	EXISTING ASPHALT PAVEMENT ROAD.		
	NEW CONCRETE PAD AND SCISSOR DOCK TRUCK PIT.		
	NEW CONCRETE 6" CURB AND 1'-0" GUTTER.		
	NEW STEEL LAYOUT FOR CONCRETE PAD.		

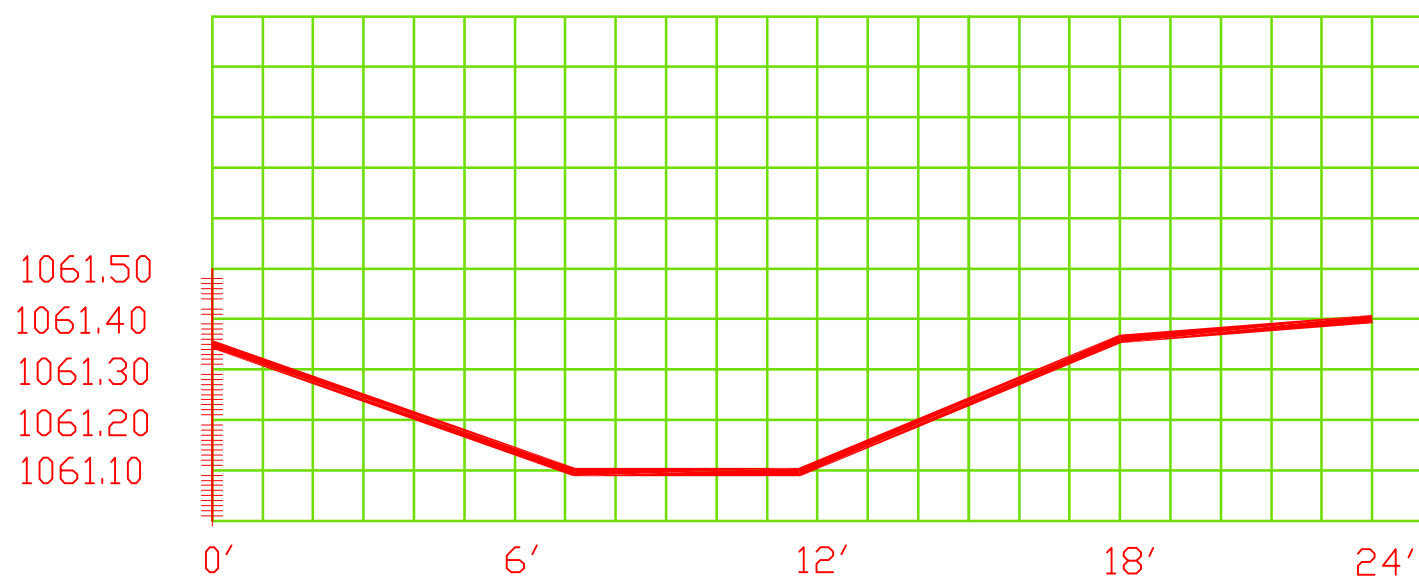


BLDG. 77 PLAN VIEW OF ELEVATIONS EXISTING GIP ROLL UP DOOR SIDEWALK.  
NO SCALE

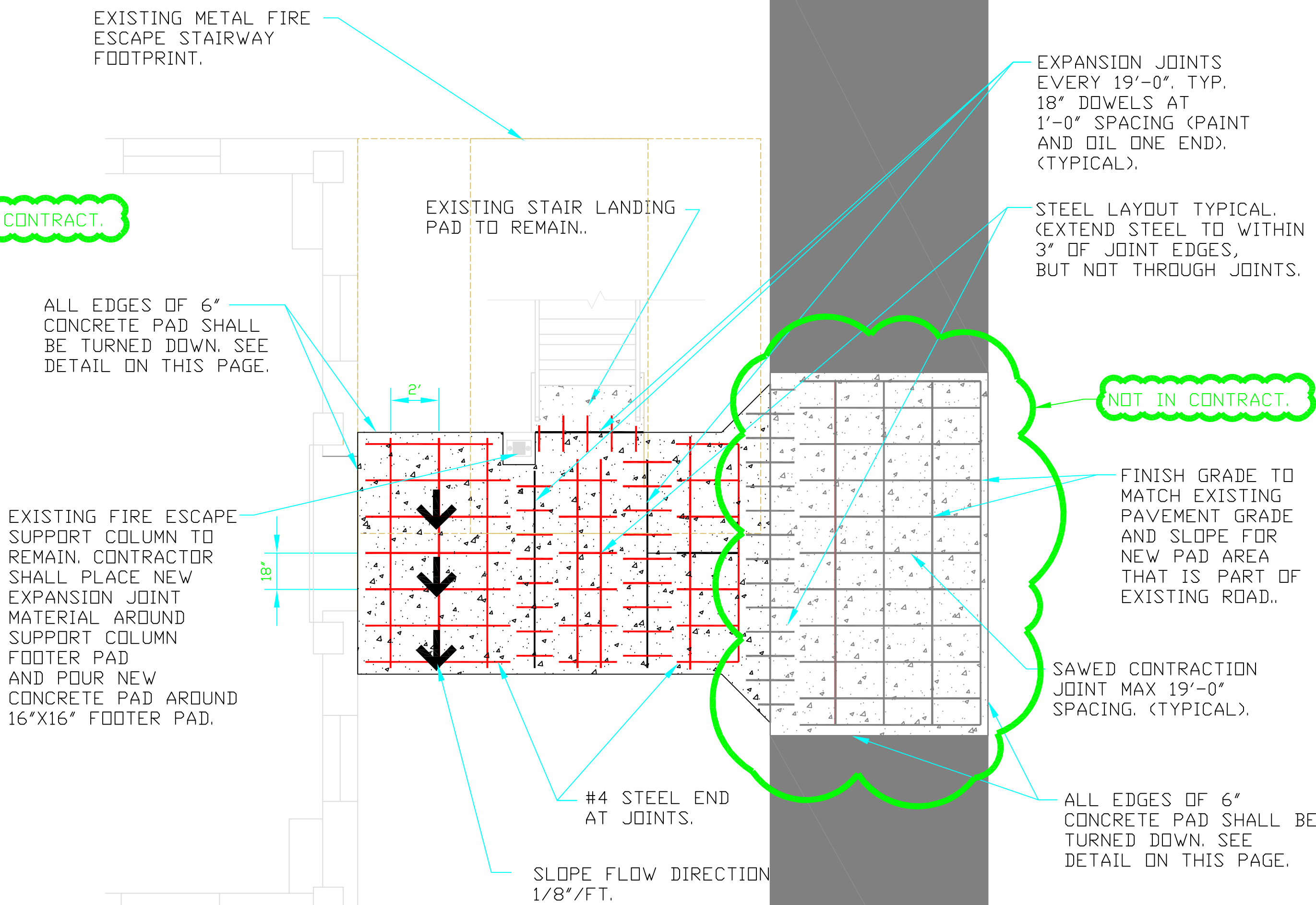
EXISTING FOOTER NOTE:

EXISTING FIRE ESCAPE STAIRWAY SUPPORT COLUMN TO REMAIN. CONTRACTOR SHALL PLACE NEW EXPANSION JOINT MATERIAL AROUND SUPPORT COLUMN FOOTER PAD AND POUR NEW CONCRETE PAD AROUND EXISTING 16"x16" FOOTER PAD.

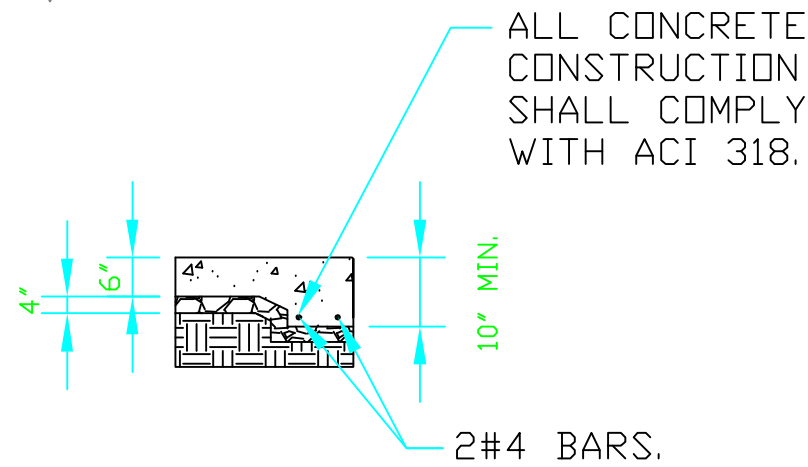
BLDG. 77 DIMENSIONS FOR NEW CONCRETE PAD AT GIP ROLL UP DOOR ENTRANCE.  
NO SCALE



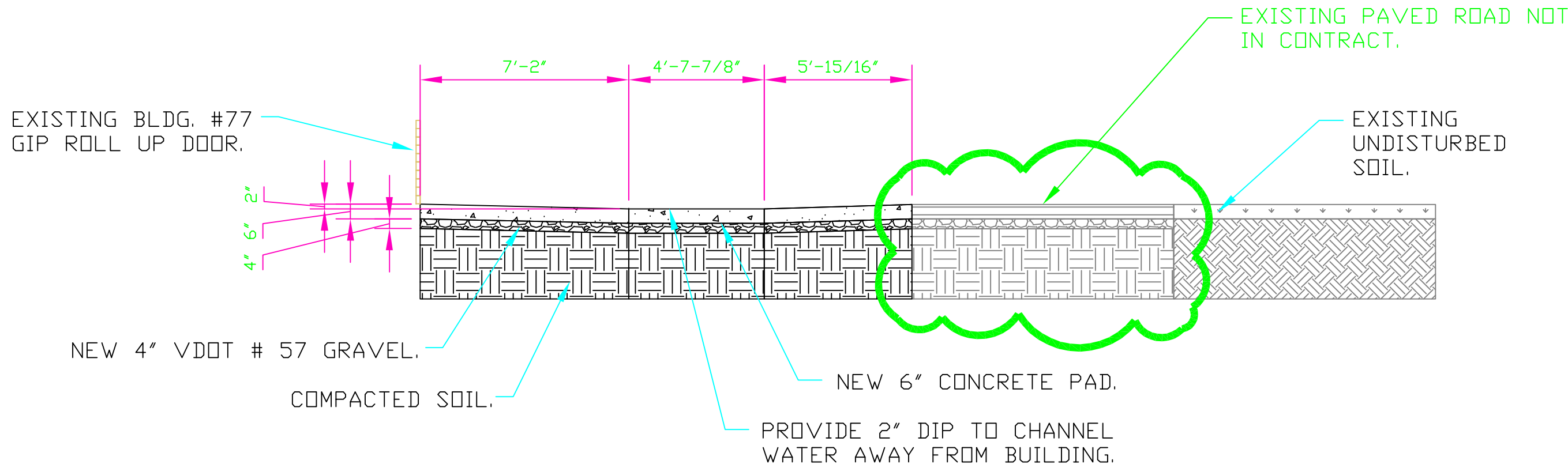
BLDG. 77 ELEV. OF EXISTING GIP ROLL UP DOOR CONCRETE PAD.  
NO SCALE



BLDG. 77 NEW CONCRETE PAD AT GIP ROLL UP DOOR ENTRANCE PLAN VIEW.  
NO SCALE



BLDG. 77 & 169 MODULAR STORAGE BLDG. NEW CONCRETE PAD TYP. TURNDOWN.  
NO SCALE



BLDG. 77 ELEV. OF NEW GIP ROLL UP DOOR SIDEWALK.  
NO SCALE

DEDUCT ALTERNATE 1; THIS SHEET

2	ADDED ROOM 4E	J.B.	6-24-02
3	ADDED DOOR SVINGS TO DOORS SEPARATING CORR. 17 FROM 18	J.B.	5-24-01
Revisions		Date	

Approved: Service Chief	Drawing Title BLDG. 77 EXISTING CONCRETE PAD DEMO AND REINSTALLATION.	Project Title INSTALL ACCESS TO BLDG. 77 & 169.			Date 7/12/12	Veterans Affairs
Approved: Chief of Staff					Project No. 658-12-018	
	Approved: Chief of Engineering Svc.	Building Number 77-169	Checked WGJ	Drawn WBJ	DRAWING NO. C1	
Approved: Associate Director	Approved: Medical Center Director	Location VAMC SALEM, VIRGINIA			2546B Dwg. 2 Of 4	