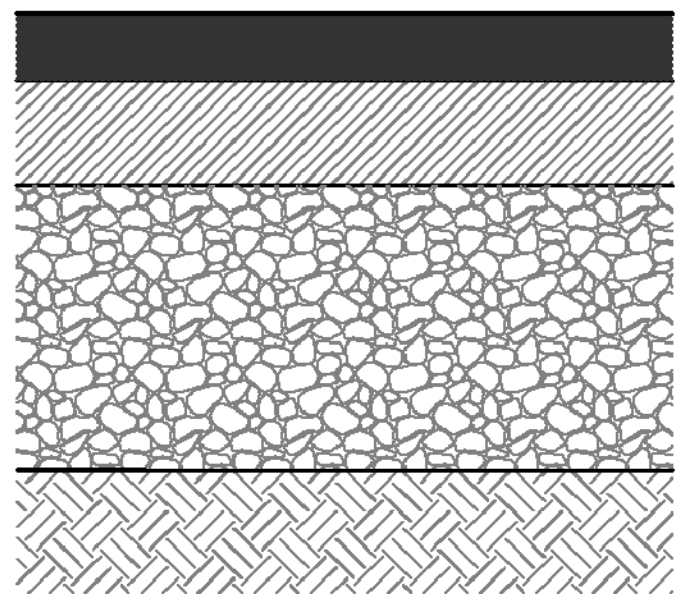


three inches = one foot  
one and one-half inches = one foot  
one inch = one foot  
three-quarters inch = one foot  
one-half inch = one foot  
three-eighths inch = one foot  
one-quarter inch = one foot  
one-eighth inch = one foot

BLDG. # 169 IS 60'-0" IN WIDTH WHERE THE NEW CONCRETE CURB AND GUTTER ARE TO BE INSTALLED.

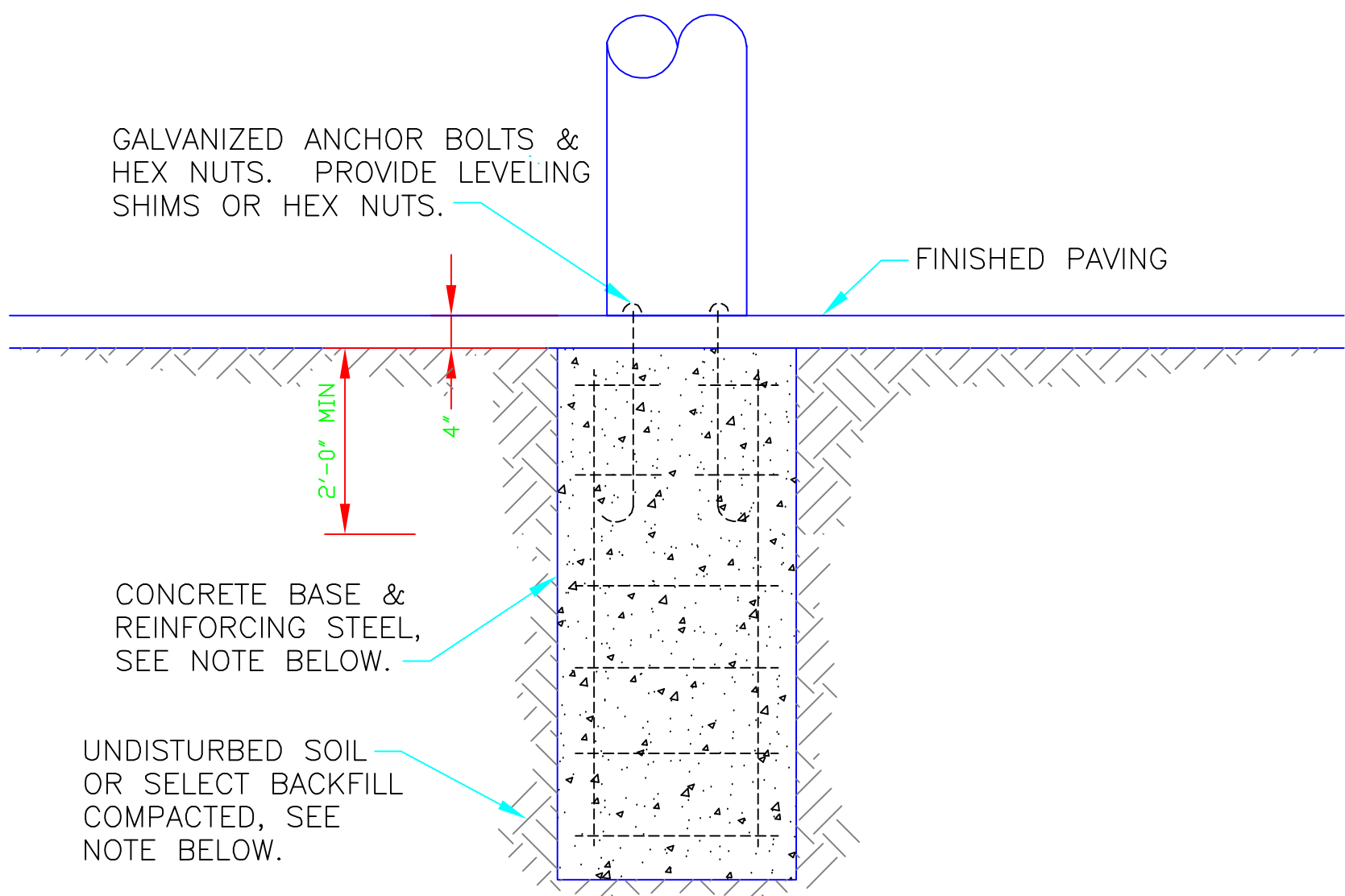
### HEAVY-DUTY PAVEMENT



NO SCALE

### TYPICAL PAVEMENT SECTION

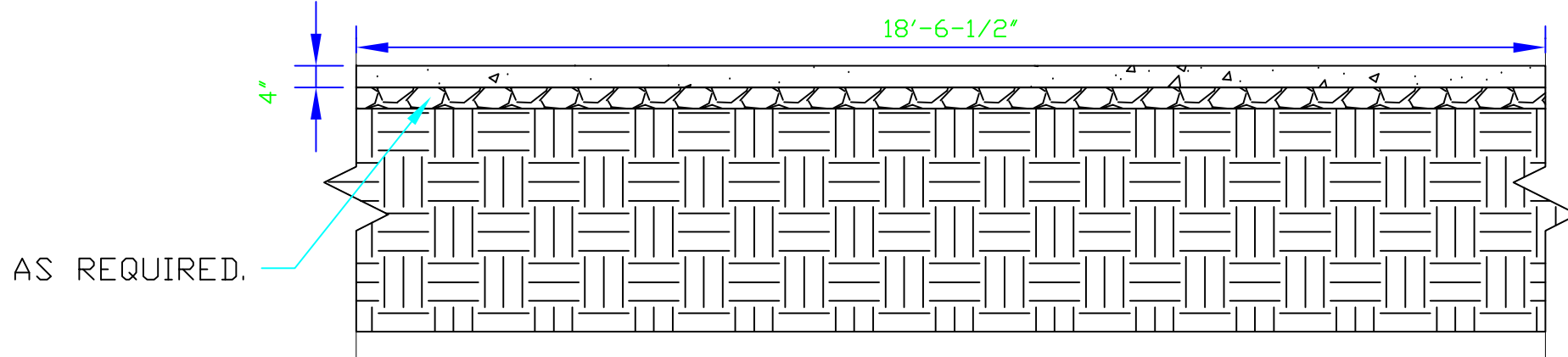
BLDG. 169 MODULAR STORAGE BLDG. DETAIL-NEW HEAVY DUTY ASPHALT PAVEMENT.  
NO SCALE



NOTE:  
BACKFILL, CONCRETE, REINFORCING STEEL, AND ANCHOR BOLTS ARE SHOWN FOR REFERENCE ONLY.

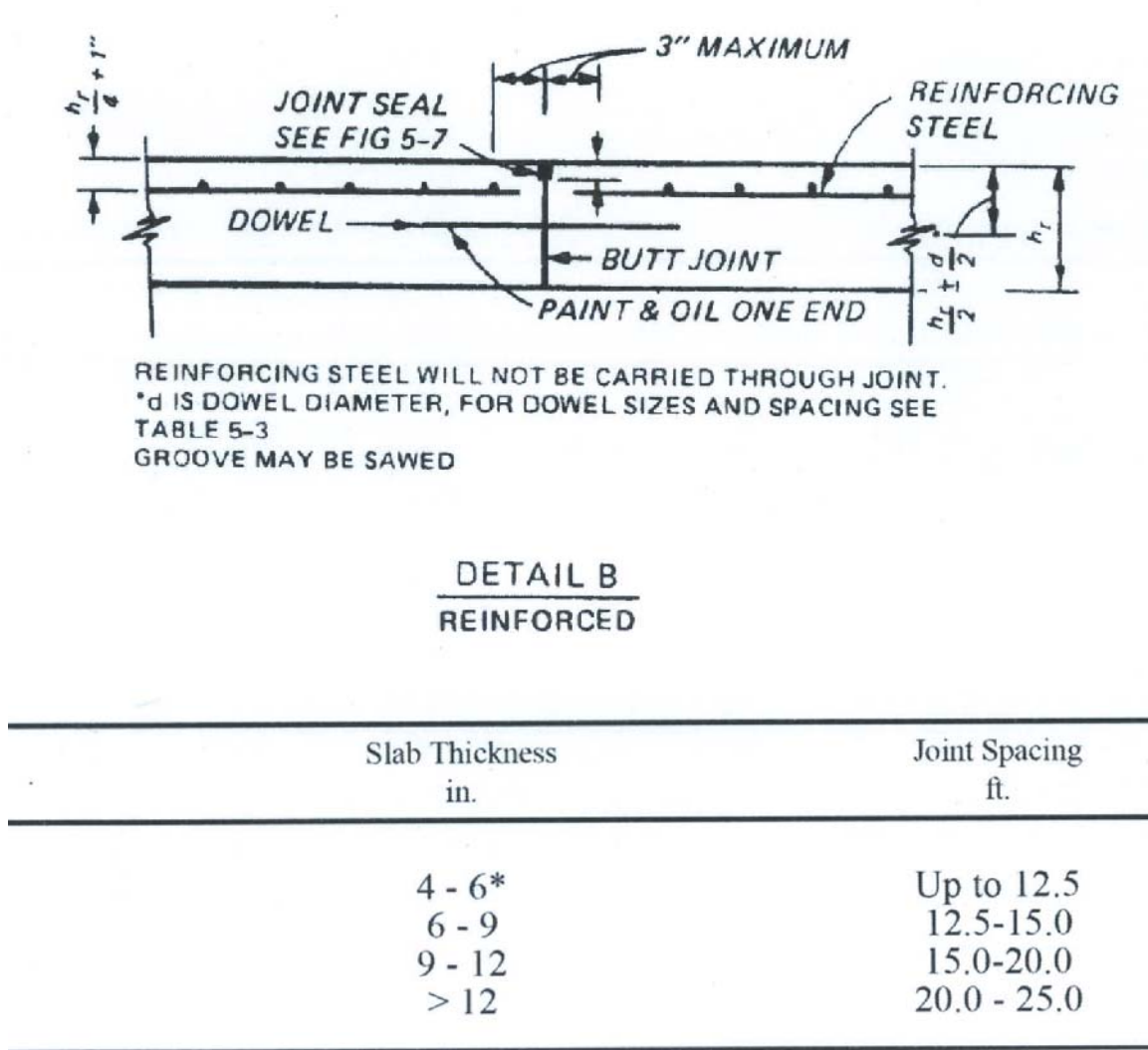
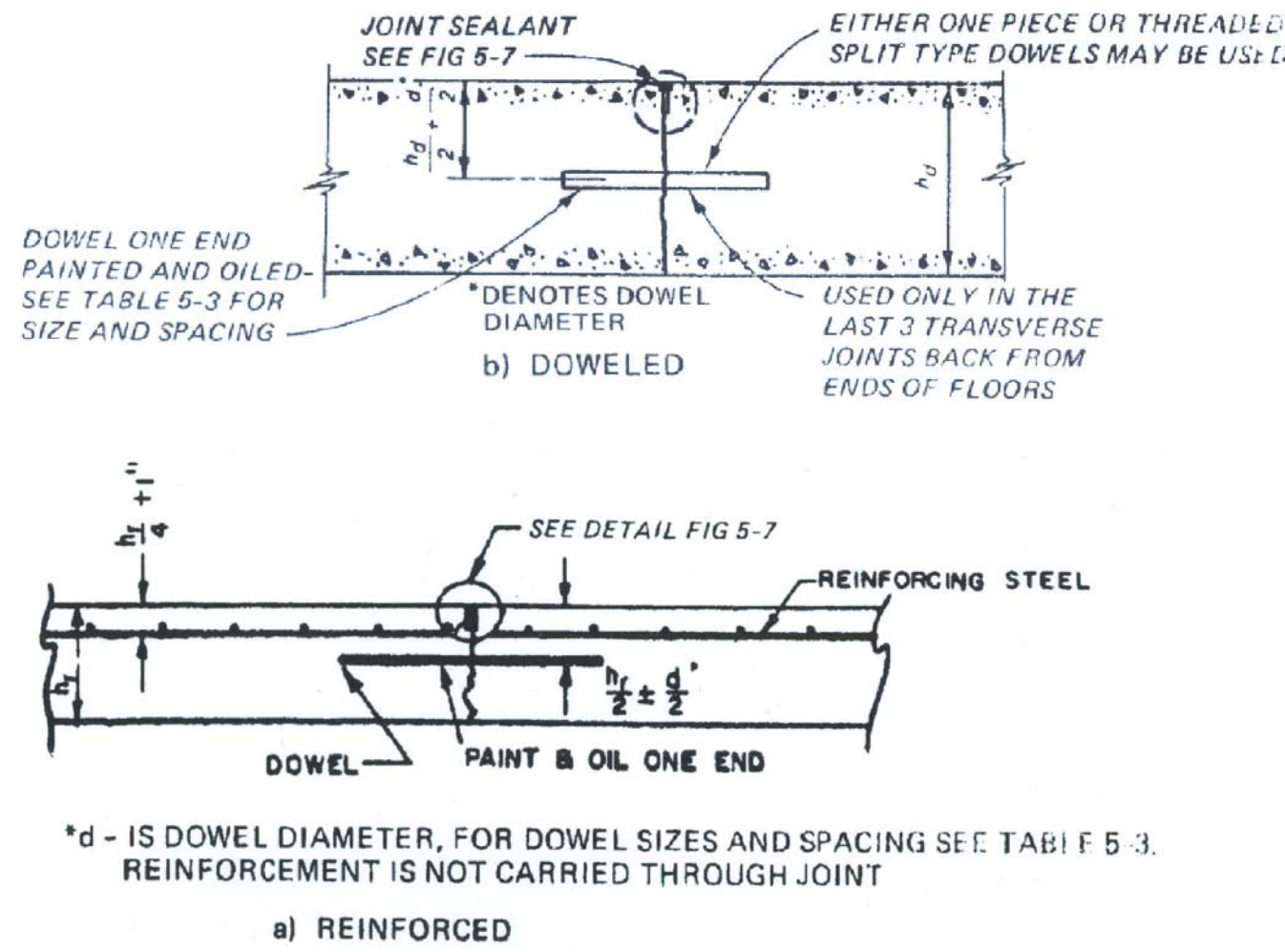
BLDG. 169 MODULAR STORAGE BLDG. DETAIL-BOLLARD BASE  
NO SCALE (PAVED AREAS)

ALL CONCRETE CONSTRUCTION SHALL COMPLY WITH ACI 318.  
2#4 BARS.  
BLDG. 169 MODULAR STORAGE BLDG. NEW CONCRETE PAD TYP. TURNDOWN.  
NO SCALE

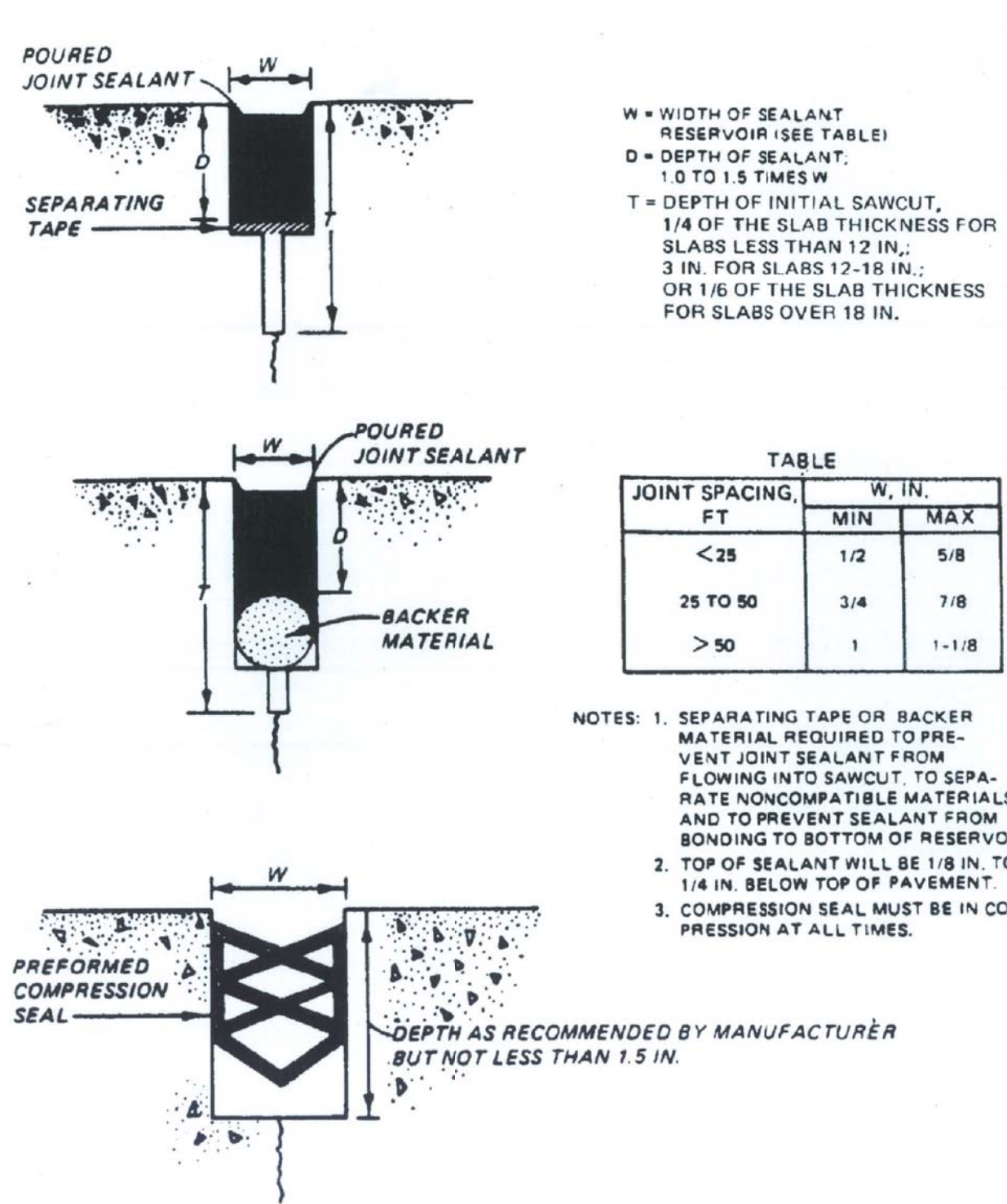


BLDG. 169 MODULAR STORAGE BLDG. NEW CONCRETE SIDEWALK ELEV.  
NO SCALE

EXISTING UN-GRADED EARTH WHERE NEW COMPACTION, GRAVEL AND PAVEMENT SHALL BE ADDED.



\*This thickness is allowed for steel-fiber reinforced concrete only.



JOINT SPACING FT	W, IN.	
	MIN	MAX
< 25	1/2	5/8
25 TO 50	3/4	7/8
> 50	1	1-1/8

NOTES: 1. SEPARATING TAPE OR BACKER MATERIAL REQUIRED TO PREVENT JOINT SEALANT FROM FLOWING INTO SAWCUT TO SEPARATE INCOMPATIBLE MATERIALS. AND TO PREVENT SEALANT FROM BONDING TO BOTTOM OF RESERVOIR.  
2. TOP OF SEALANT WILL BE 1/8 IN. TO 1/4 IN. BELOW TOP OF PAVEMENT.  
3. COMPRESSION SEAL MUST BE IN COMPRESSION AT ALL TIMES.

BLDG. 169 MODULAR STORAGE BLDG. NEW CONCRETE PAD CONTRACTION JOINT AND JOINT SEALANT DETAILS.  
NO SCALE

CONSTRUCT AS RADIUS.

EXISTING GRAVEL ROADBED TO BE PAVED/REPAVED.

EXISTING UN-GRADED EARTH WHERE NEW COMPACTION, GRAVEL AND PAVEMENT SHALL BE ADDED.

EXISTING ASPHALT PAVEMENT.

BLDG. 169 MODULAR STORAGE BLDG. NEW ASPHALT PAVEMENT AREA.  
NO SCALE

GENERAL NOTE:

ASPHALT CONSTRUCTION DETAILS, INCLUDING COMPACTION REQUIREMENTS, ARE CONTAINED IN THE ATTACHED VA SPECIFICATIONS AND SHALL MEET OR EXCEED VIRGINIA DEPARTMENT OF TRANSPORTATION (VDOT) REQUIREMENTS.

Revisions	Date	Approved: Service Chief	Drawing Title BLDG. 169 NEW ASPHALT PAVEMENT INSTALLATION.	Project Title INSTALL ACCESS TO BLDG. 77 & 169.	Date 7/12/12	Veterans Affairs
		Approved: Chief of Staff		Building Number 77-169	Project No. 658-12-018	
		Approved: Associate Director		Checked WGJ	DRAWING NO. C3	
				Drawn WBJ	2546B Dwg. 4 Of 4	