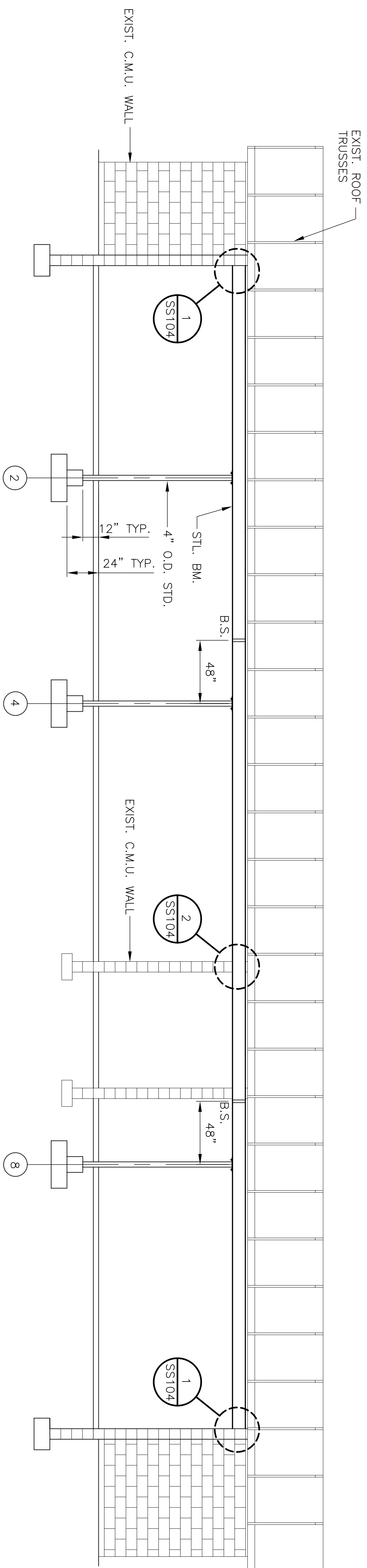





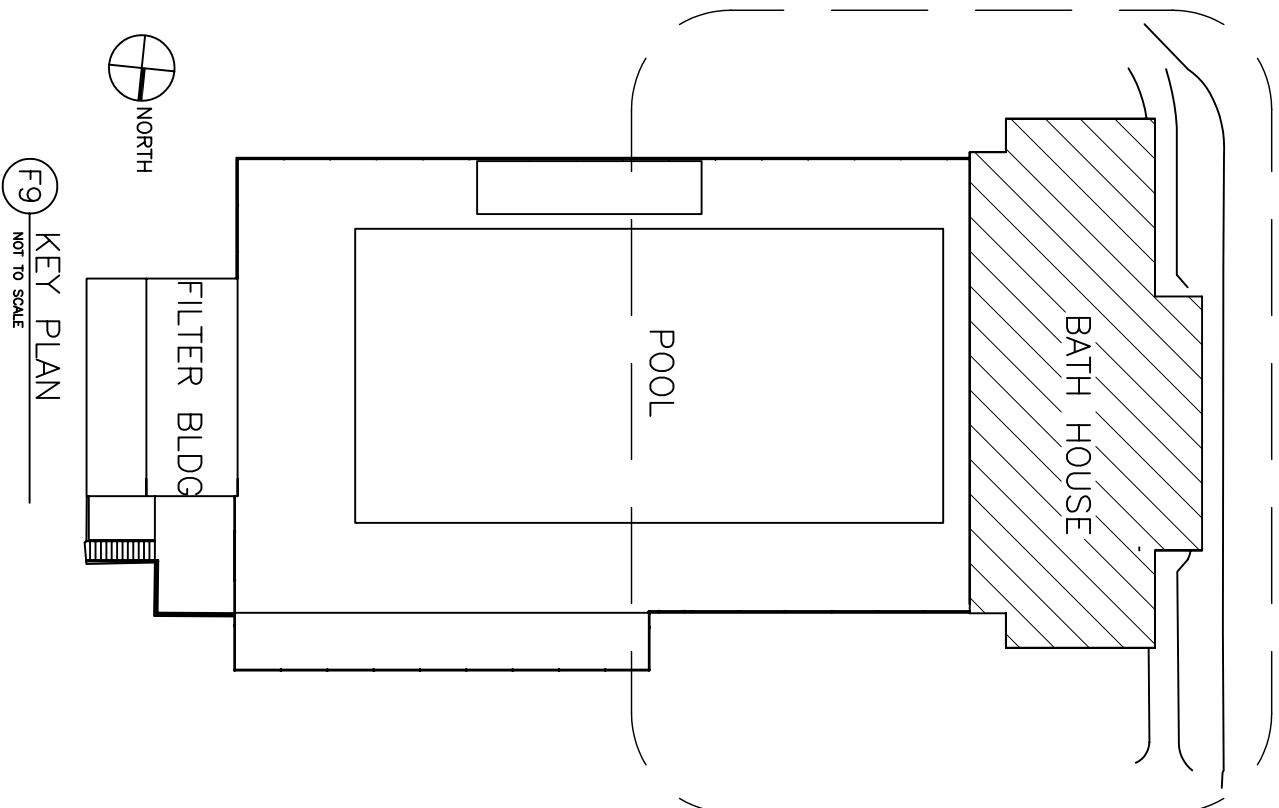
# ROOF FRAMING PLAN

SCALE: 1/4"=1'-0"



LOOSE LINTEL SCHEDULE		
L1	(2) $\angle$ $3\frac{1}{2}" \times 3\frac{1}{2}" \times \frac{5}{16}"$	 4" END BRG.
L2	(2) $\angle$ $6" \times 3\frac{1}{2}" \times \frac{5}{16}"$ LLV	 4" END BRG.
L3	$\angle$ $6" \times 3\frac{1}{2}" \times \frac{5}{16}"$ LLV	 4" END BRG.

C1: 4" DIA. STD. PIPE COL. w/ CAP PL. 5½" x 10" x ½",  
BASE PL. 10" SQ. x ⅝", LEVELING PLATE 10" SQ. x ¼" &  
(4) - ¾" DIA. A36 THREADED ROD ANCHORS w/ NUT &  
WASHER & 12" MIN. EMBED.



## ELEVATION @ COL. LINE B

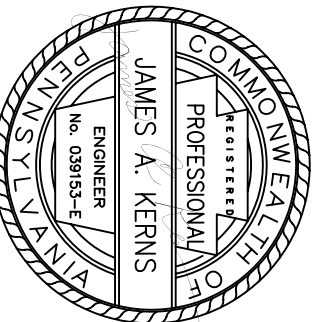
SCALE: 1/4"=1'-0"

## CONSULTANTS:

[illegible]

187 NORTH MAIN STREET, WILKES-BARRE, PENNSYLVANIA 18702-4425

(570) 823-9935



**SAA** architects  
600 North Harley Street, Suite 850  
77 944-3000 F 77 999-0205  
www.saaarchitects.com  
York, PA 17404

YORK, PA 17404  
3888architects.com

## ARCHITECT/ENGINEERS:

Roof Framing Plan and Elevation

Project Title	RECREATIONAL POOL FACILITY RENOVATIONS
---------------	---

RENOVATIONS  
DATA HOUSE

Approved: Project Director

**LOCATION**  
VAMC, MARTINSBURG, WV

ISBURO

Drawing Number  
SS102

Office of  
Construction  
and Facilities  
Management

Department of  
Veterans Affairs