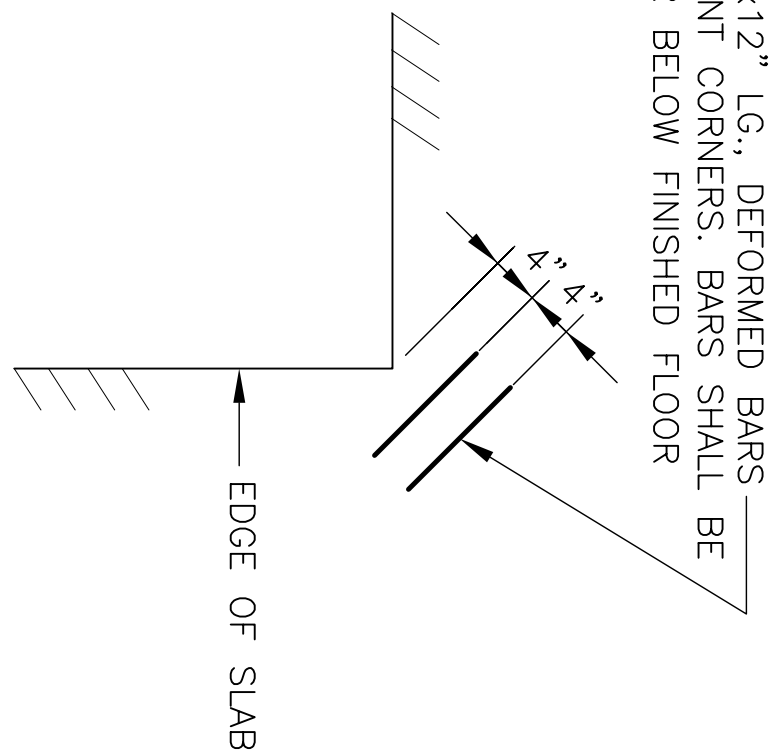
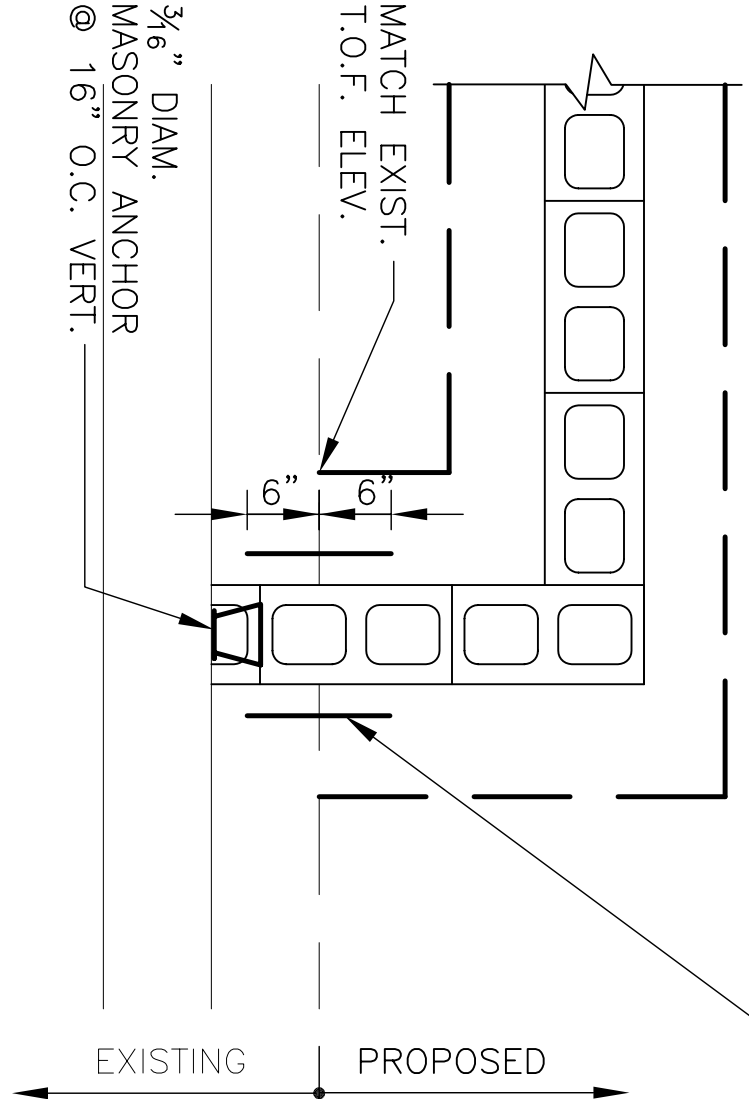


PLACE (2) - #4x12" LG., DEFORMED BARS @ ALL RE-ENTRANT CORNERS. BARS SHALL BE PLACED 1" CLEAR BELOW FINISHED FLOOR SURFACE



3/4" DIAM. A36 SMOOTH DOWELS EQ. SPACED ANCHOR INTO EXIST. CONSTR. W/ SELF CONTAINED ESTER BASED RESIN ADHESIVE CAPSULE. PROVIDE 7/8" DIAM. HOLE WITH 6" MIN. EMBED.



SAWCUT CONTROL JOINT

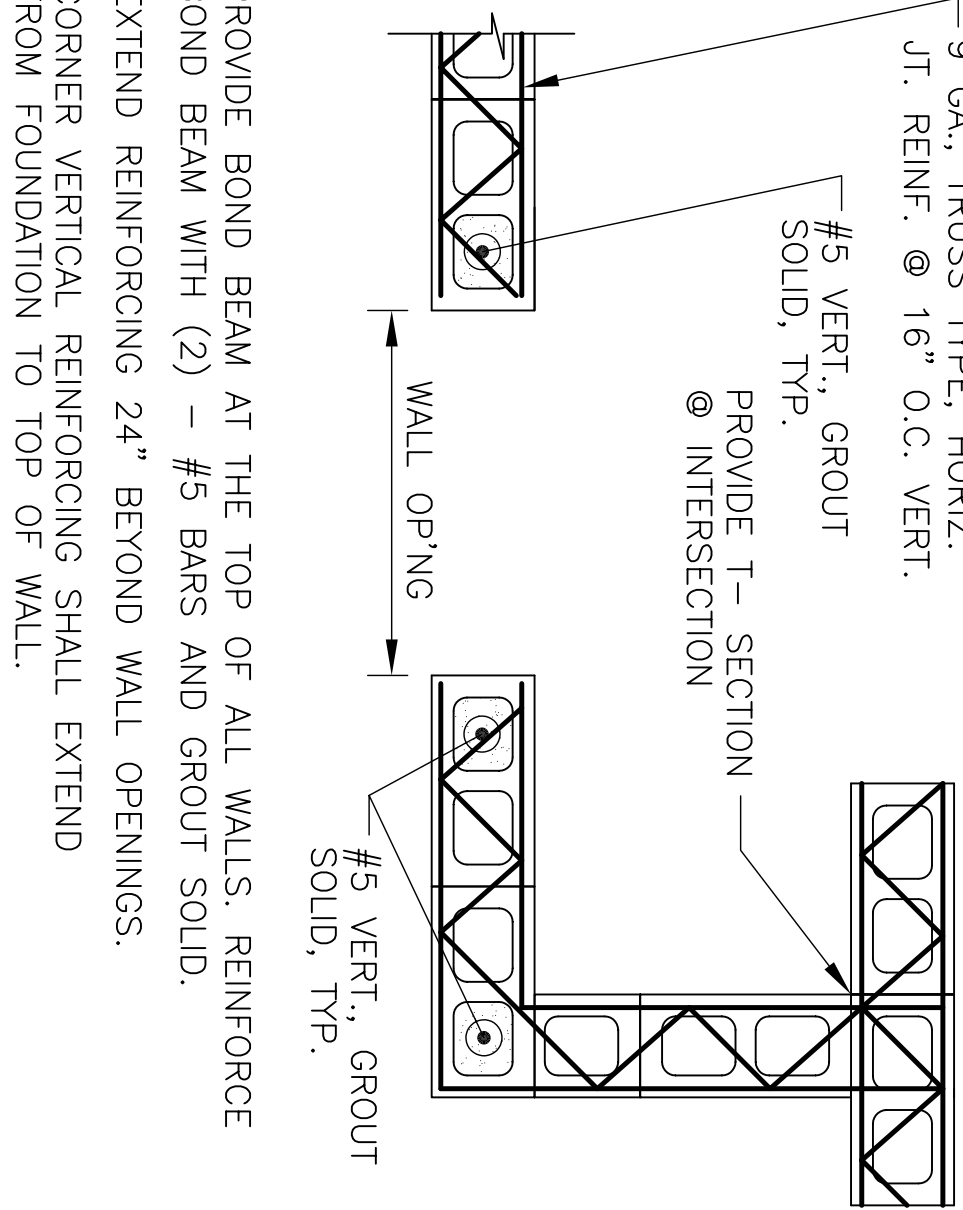
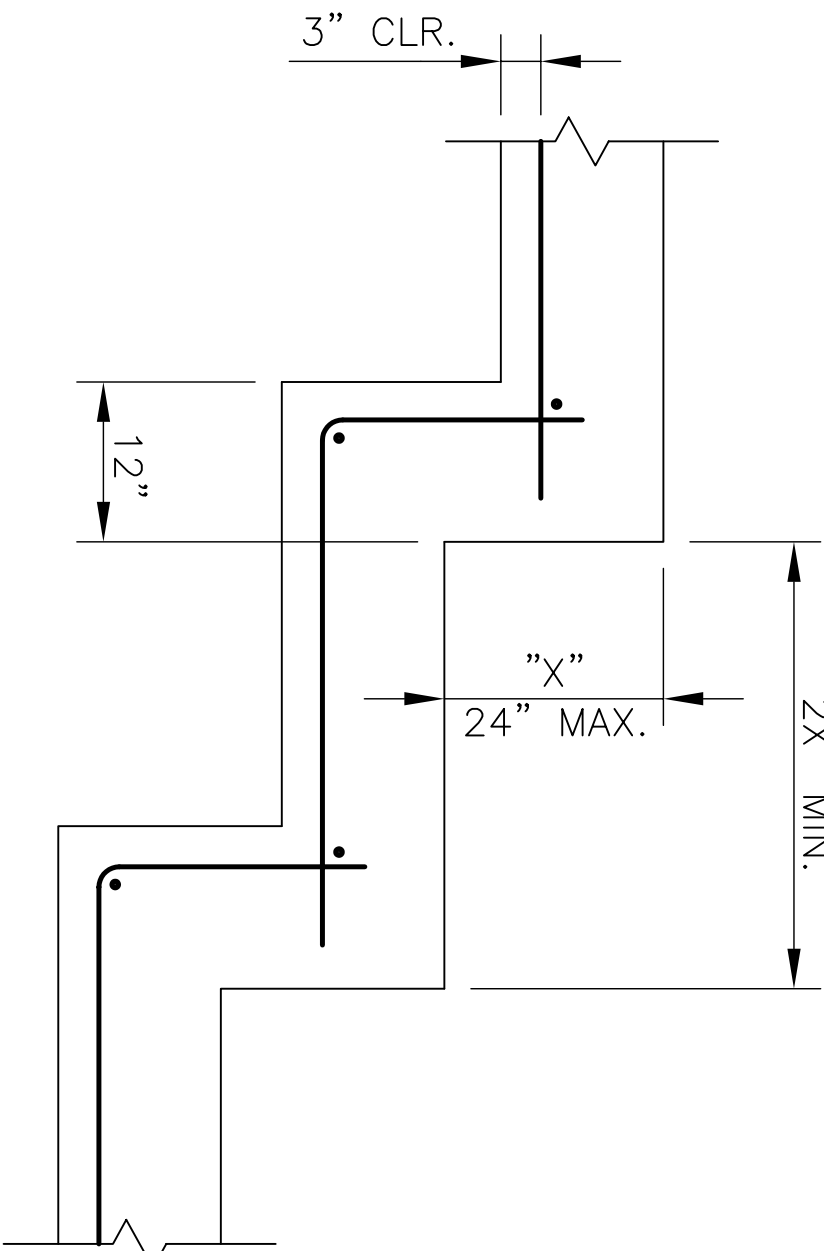
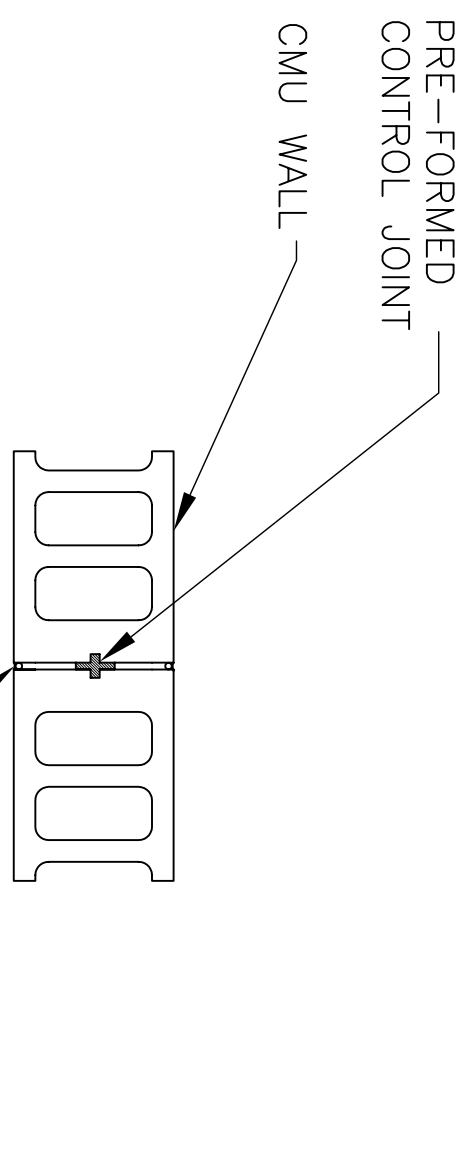
SLAB ON GRADE CONSTRUCTION JOINT

COL. ISOLATION JOINT

S.O.G. REINFORCEMENT

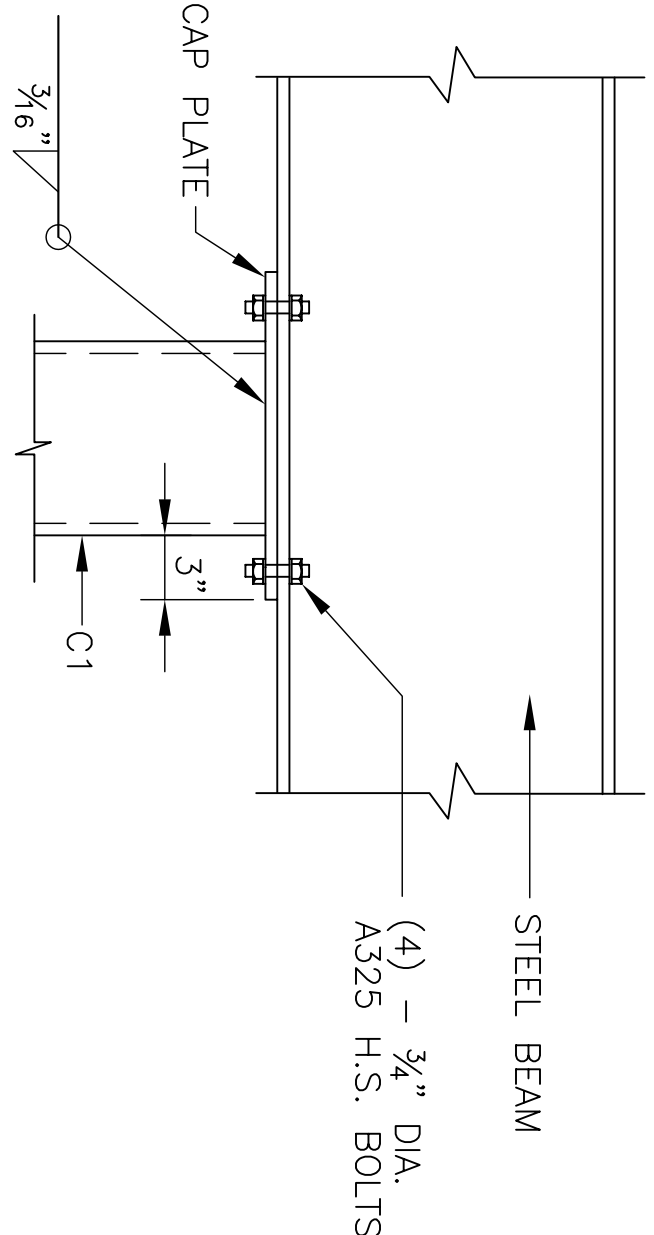
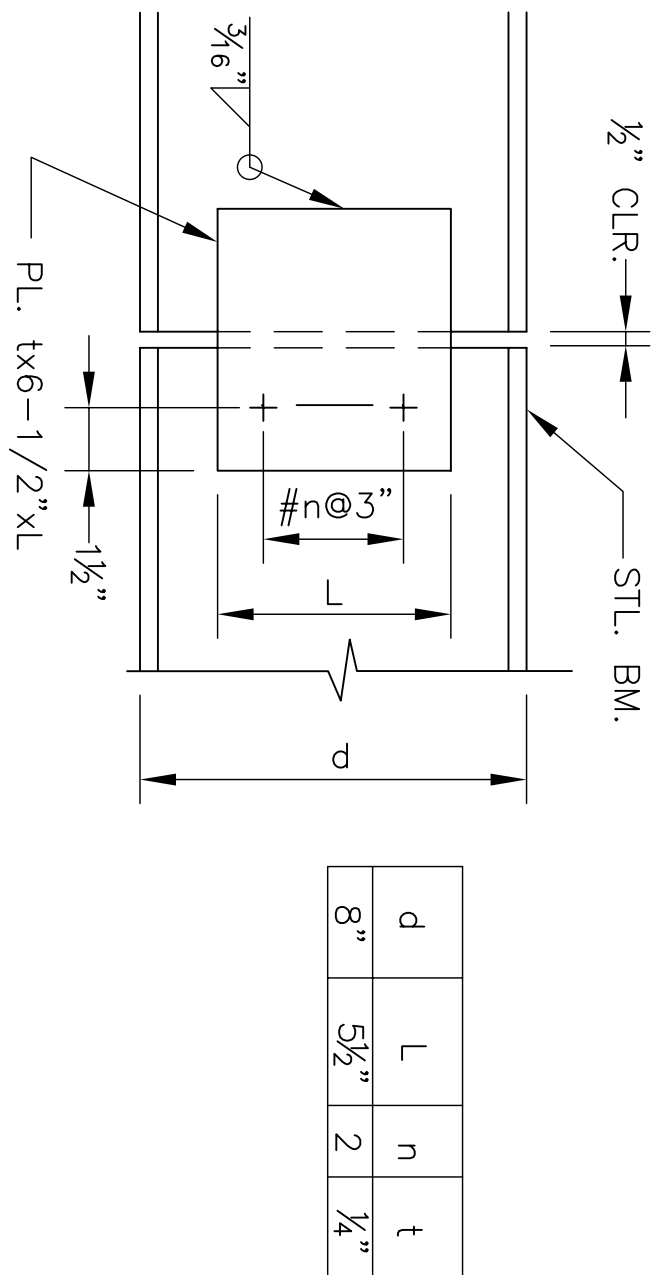
FOOTING TIE

LOCATE CONTROL JOINTS AS SHOWN ON ARCHITECTURAL DWGS.



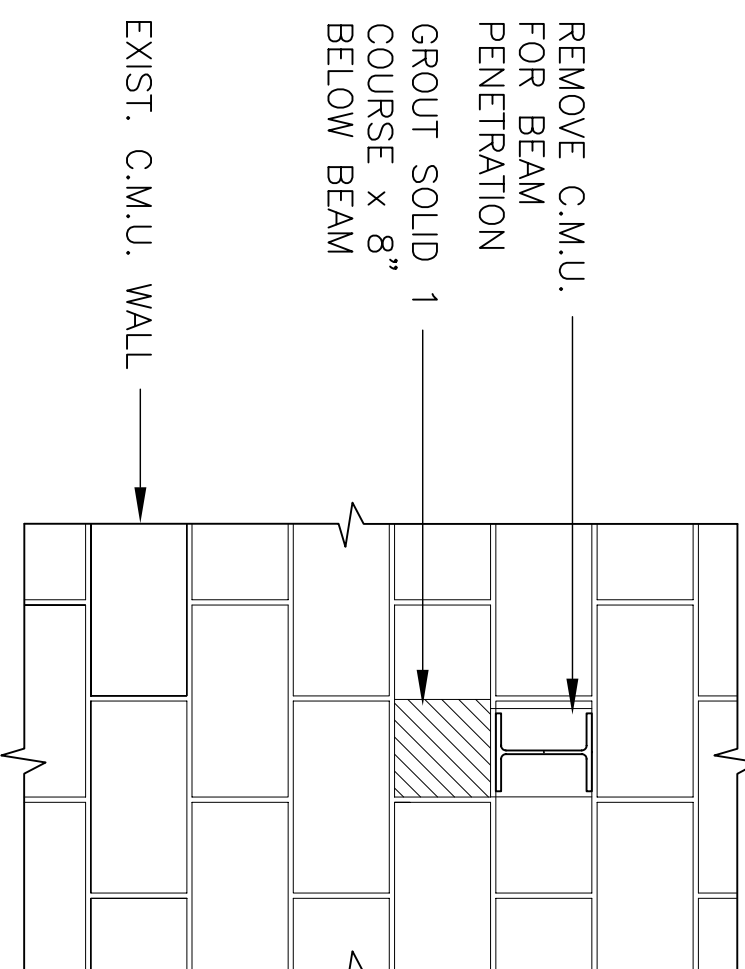
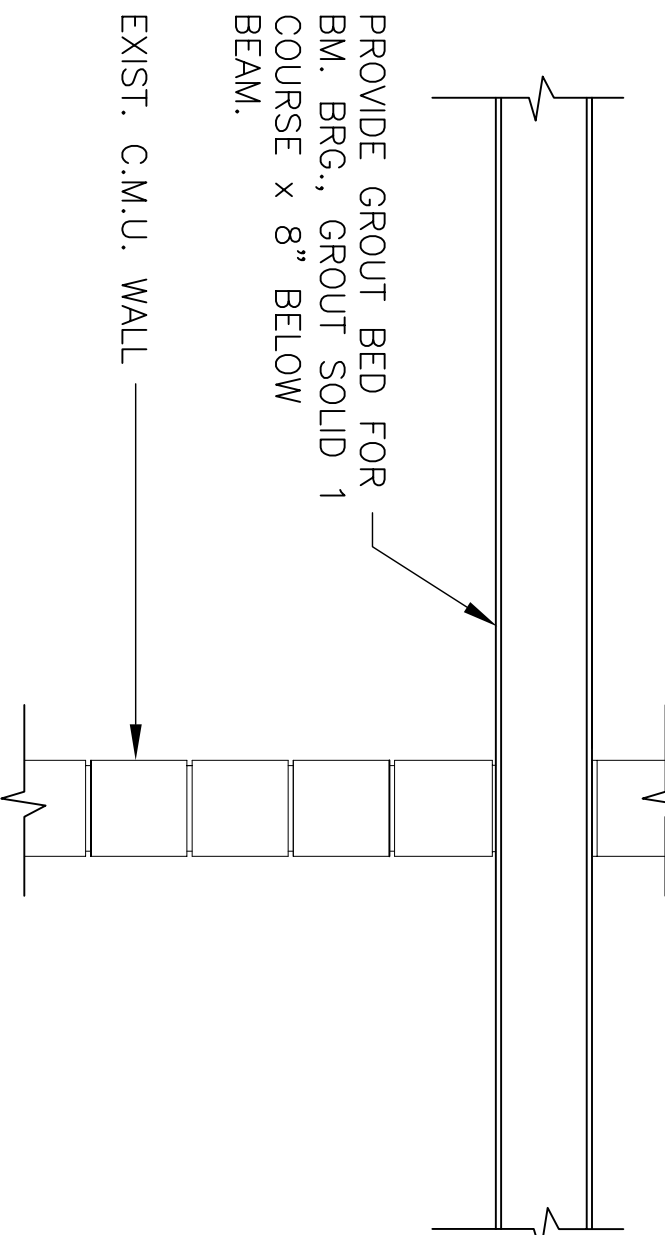
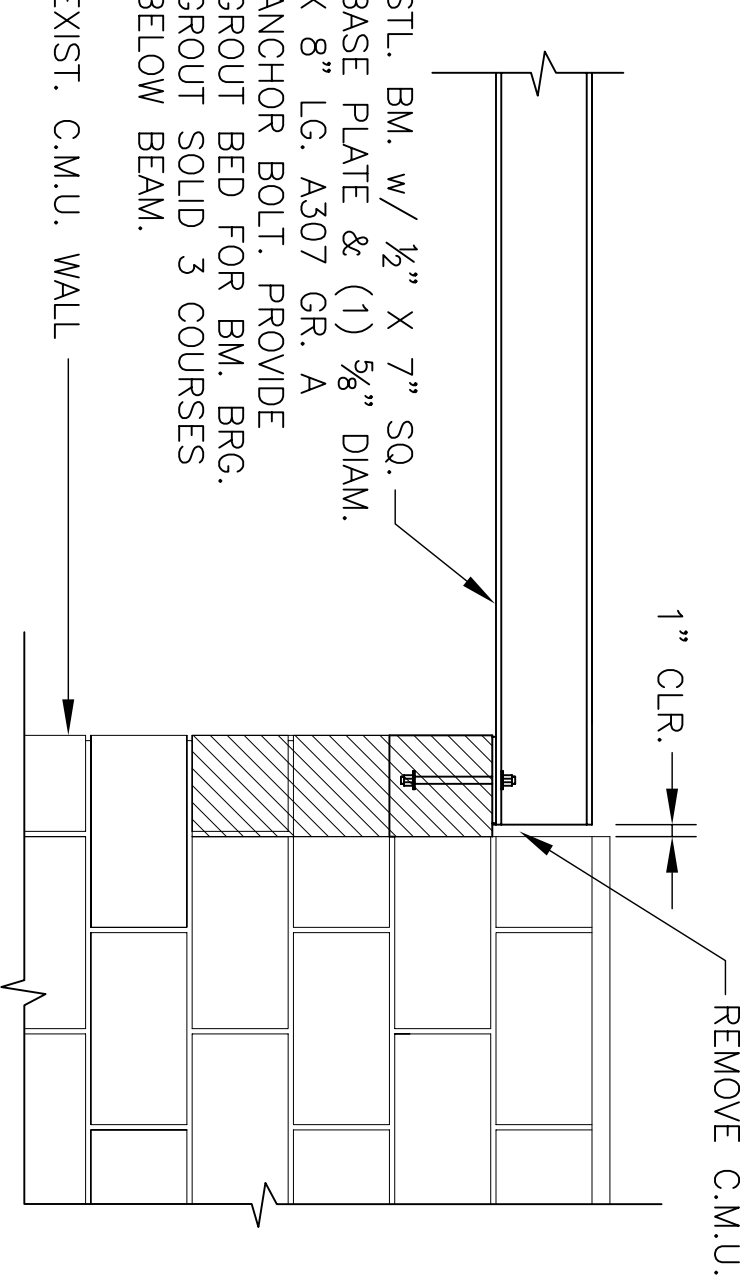
STEPPED FTG.

CMU WALL REINF. PLAN



BEAM SHEAR SPLICE

CONT. BEAM OVER COL.

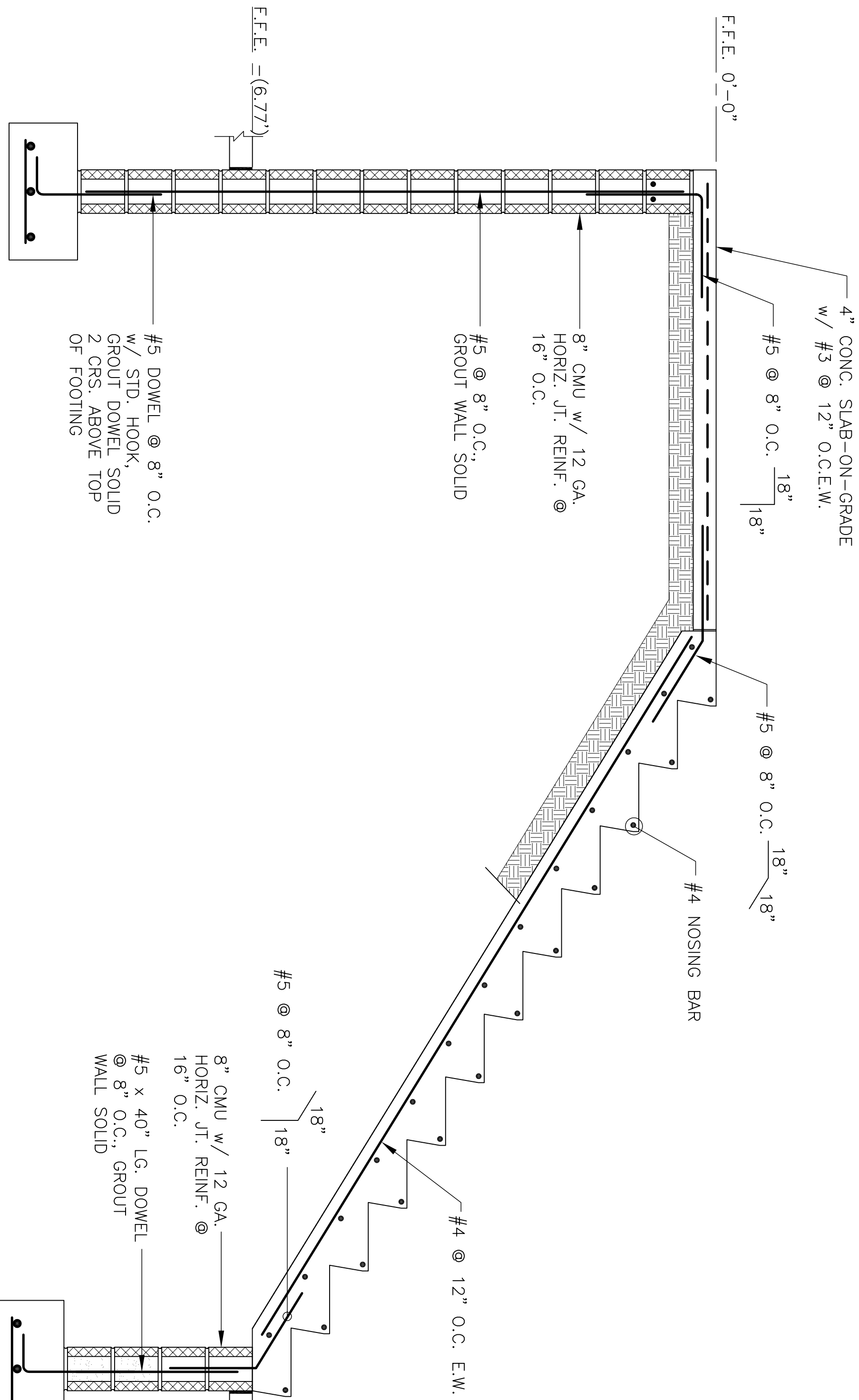


1 BEAM BEARING

2 BEAM BEARING

3 BEAM BEARING ELEVATION

B STAIR SECTION

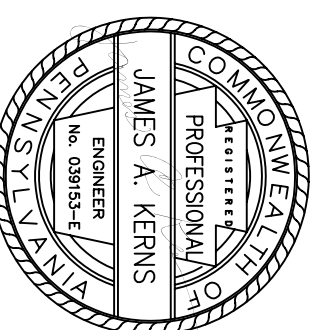


CONSULTANTS:

APPROQ ENGINEERING, INC.

187 NORTH MAIN STREET, WILKES-BARRE, PENNSYLVANIA 18702-4425

(670) 823-9955



ARCHITECT/ENGINEERS:

SMA architects

600 North Haverly Street, Suite 500
T/717-263-0200 F/717-263-0205
www.smaarchitects.com

Torx, PA 17104

DETAILS

Approved Project Director

Project Title
RECREATIONAL POOL FACILITY RENOVATIONS
BATH HOUSE

Project Number
613-II-140
Building Number
417
Drawing Number
SS104

Office of Construction and Facilities Management
Department of Veterans Affairs

100% CONSTRUCTION DOCUMENTS