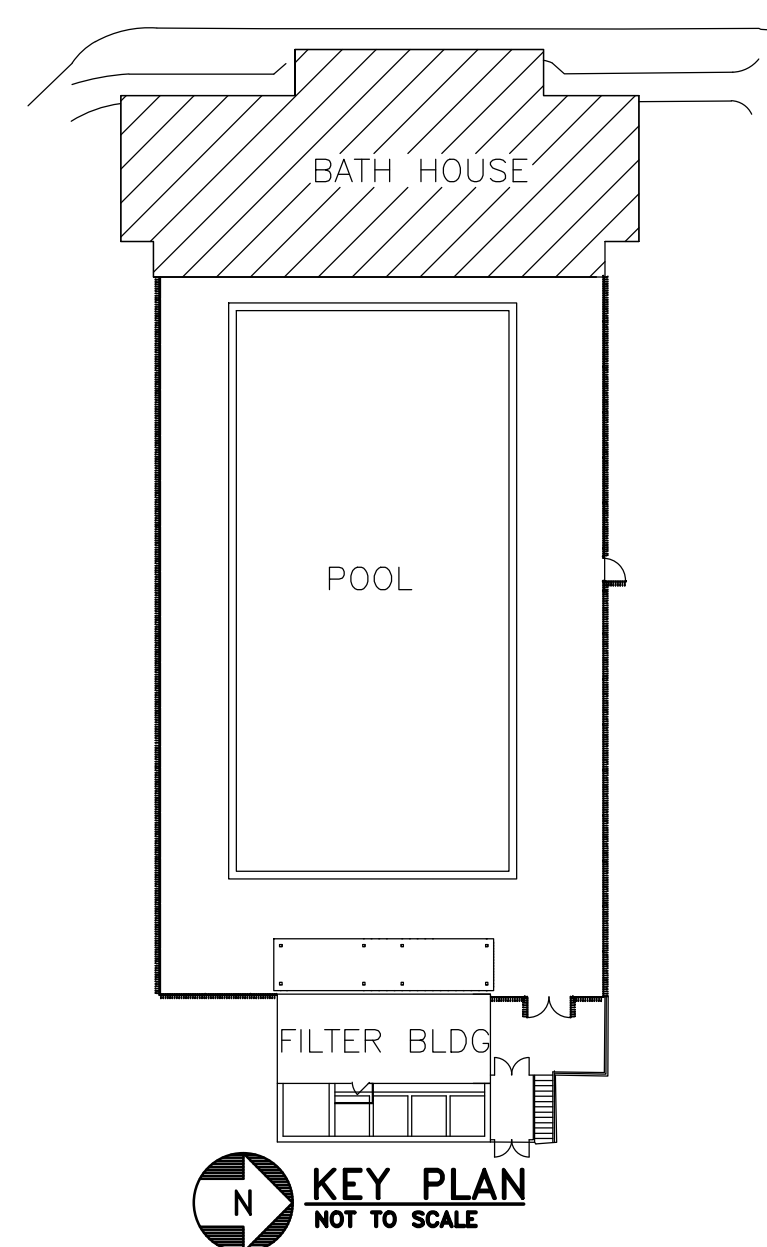
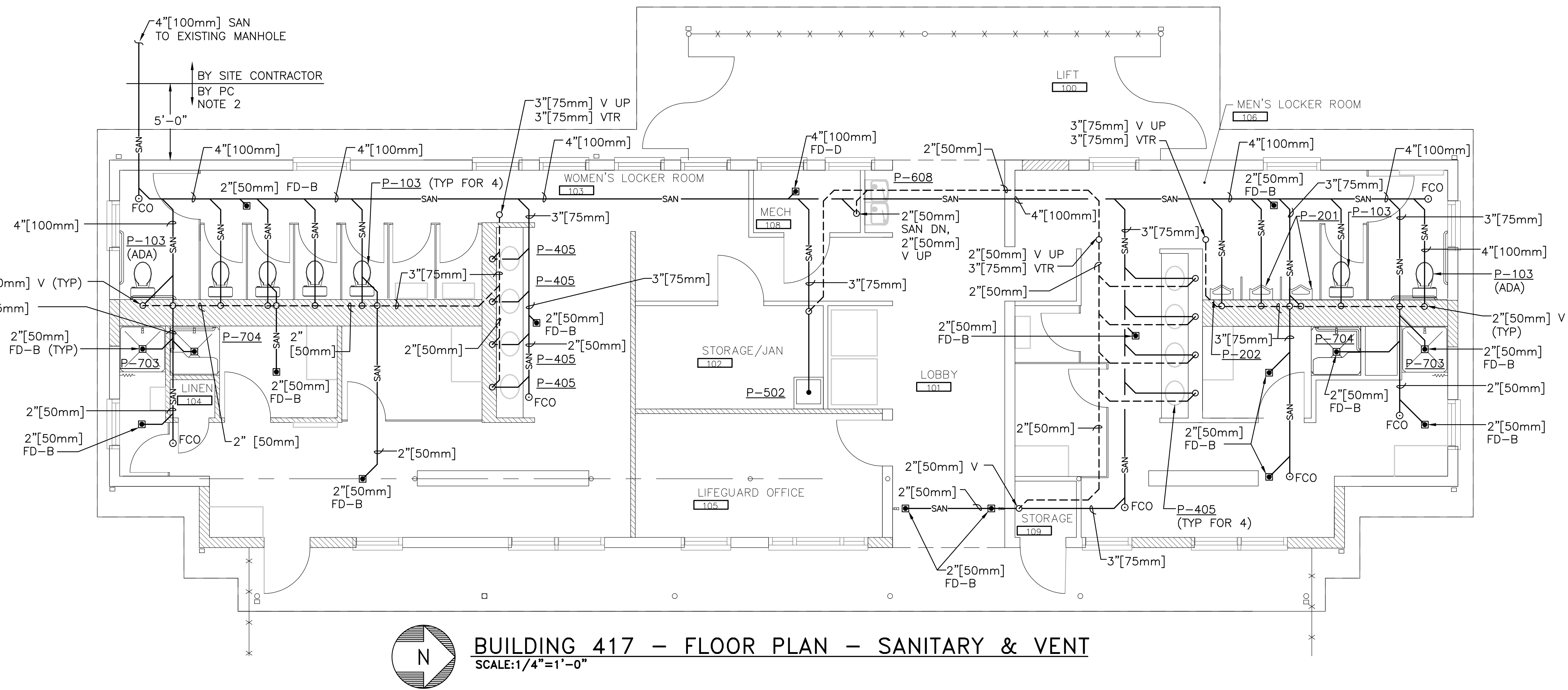


NOTES:

- DOMESTIC WATER PIPING SHALL BE INSTALLED TO ALLOW COMPLETE DRAINING OF THE SYSTEM. PIPING SHALL BE SLOPED TO HOSE BIBB LOCATIONS TO ALLOW FOR DRAINING AT THESE LOCATIONS.
- PLUMBING CONTRACTOR SHALL MAKE FINAL CONNECTION.



100% CONSTRUCTION DOCUMENTS

CONSULTANTS: Barton Associates Consulting Engineers Rivershore Creative Center North Building 221 West Philadelphia Street York, PA 17403 Tel: (717) 845-1054 Web: www.barton.com We Make Buildings Work. PROJECT NO. 2011129.00 DATE: EPS DESIGNED BY: EPS CHECKED BY: DJB		ARCHITECT/ENGINEERS: SAA architects 600 North Hartley Street, Suite 150 York, PA 17404 T 717.843.3200 F 717.669.0205 www.saaarchitects.com		Drawing Title BUILDING 417 - FLOOR PLAN - PLUMBING PIPING Approved Project Director	Project Title RECREATIONAL POOL FACILITY RENOVATIONS BATH HOUSE Location YAMC, MARTINSBURG, WV Date 05-04-12 Checked - Drawn -	Project Number 613-11-140 Building Number 417 Drawing Number 417-PL-101 Dwg. of -	Office of Construction and Facilities Management Department of Veterans Affairs
---	--	---	--	--	---	--	--