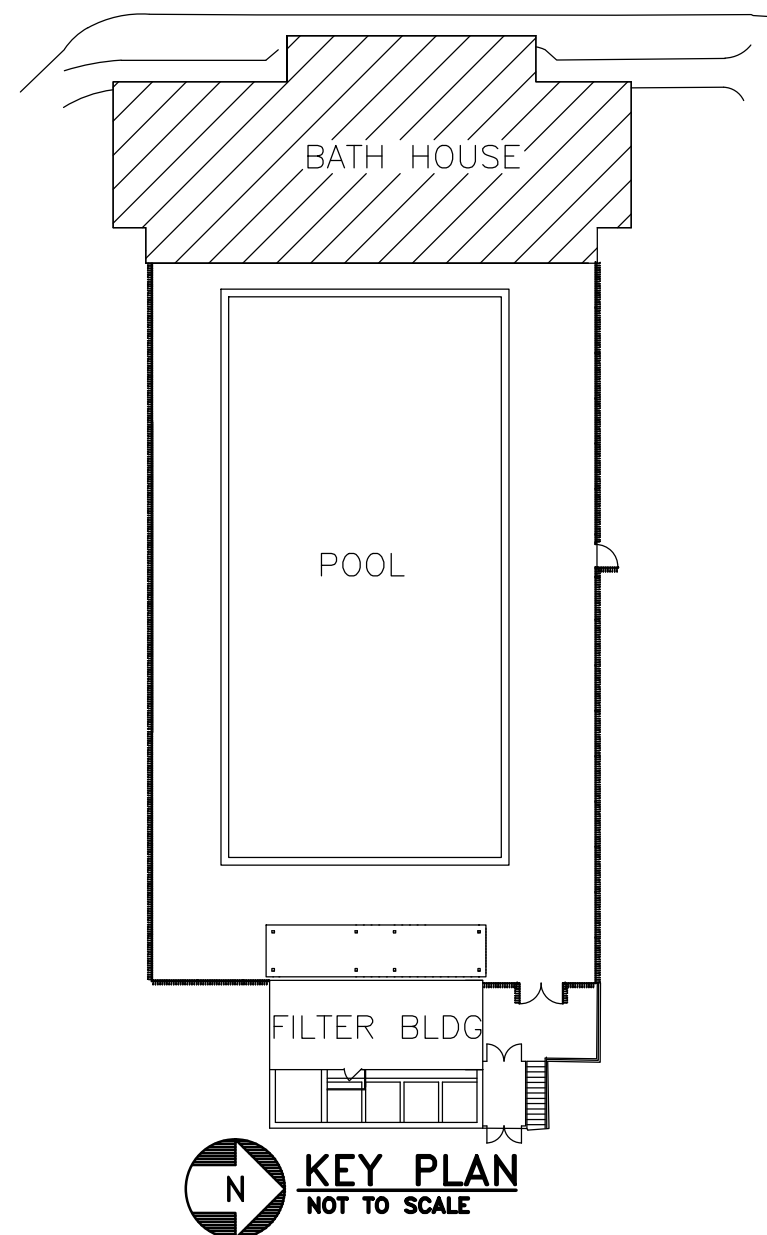


BUILDING 417 - FLOOR PLAN - HVAC
SCALE: 1/4"=1'-0"
NOTE 2

- NOTES:**
- EXHAUST FAN 417-EF1 SHALL BE INTERLOCKED WITH THE LIGHTING. WHEN THE LIGHTS ARE TURNED ON, THE FAN SHALL BE ON. WHEN THE LIGHTS ARE OFF, THE FAN SHALL BE OFF.
 - ALL DUCTWORK SHALL BE INSTALLED WITHIN THE WEBBING OF THE TRUSSES.

FAN SCHEDULE																									
MARK	LOCATION	AREA AND/OR BLDG SERVED	SYSTEM AND/OR SERVICE	AIR FLOW		TSP		FAN								MOTOR ELECTRICAL							CONTROL SEQUENCE	REMARKS	
								TYPE	WHEEL	CLASS	ARRANGEMENT, ROTATION, AND DISCHARGE	DIAMETER		MIN % EFF	DRIVE	FAN MAX RPM	NOMINAL POWER			PHASE	VOLT	RPM			SPEED CONTROL
				CFM	[L/s]	IN	[Pa]					IN	[mm]				BHP	HP	[kW]						
417-EF1	CUPOLA	POOL HOUSE	TOILET & SHOWER EXH	1850	[870]	0.5	[130]	INLINE CENTRIFUGAL	BI	I	N/A	-	-	-	BELT	1118	0.4	0.5	[373]	1	120	1725	CONSTANT	SEE SPECIFICATIONS	----



CONSULTANTS: Barton Associates Consulting Engineers Savannah-Columbus-Corridor North Building 221 West Philadelphia Street York, PA 17404 Tel: (717) 945-1954 Web: www.barton-associates.com We Make Buildings Work.		ARCHITECT/ENGINEERS: SAA architects 600 North Hartley Street, Suite 150 T 717.843.3200 F 717.699.0205 York, PA 17404 www.saaarchitects.com		Drawing Title BUILDING 417 - FLOOR PLAN - HVAC Approved Project Director		Project Title RECREATIONAL POOL FACILITY RENOVATIONS BATH HOUSE Location VAMC, MARTINSBURG, WV Date 05-04-12 Checked - Drawn -		Project Number 613-11-140 Building Number 417 Drawing Number 417-MH101 Dwg. of -		Office of Construction and Facilities Management Department of Veterans Affairs	
Revisions:		Date:									