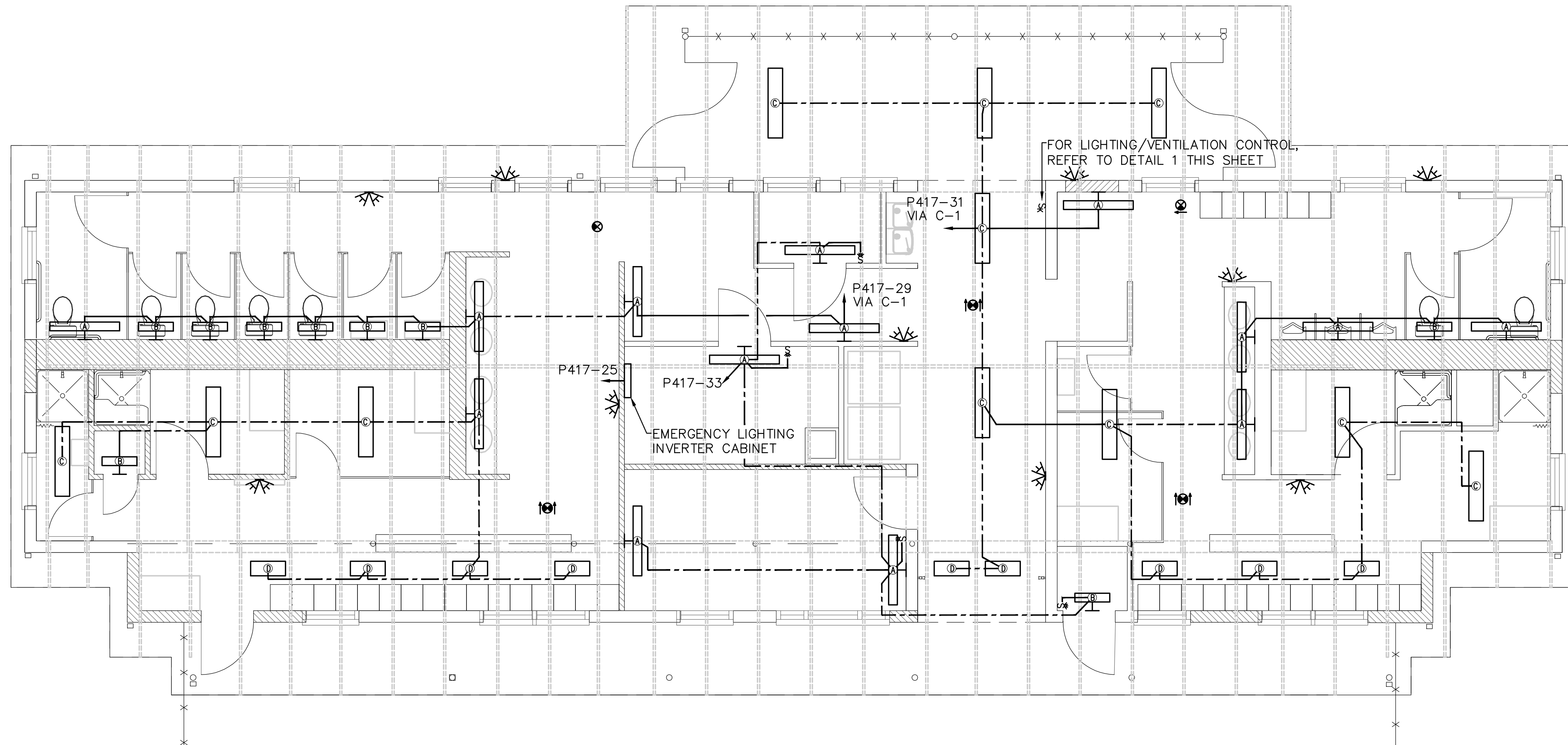
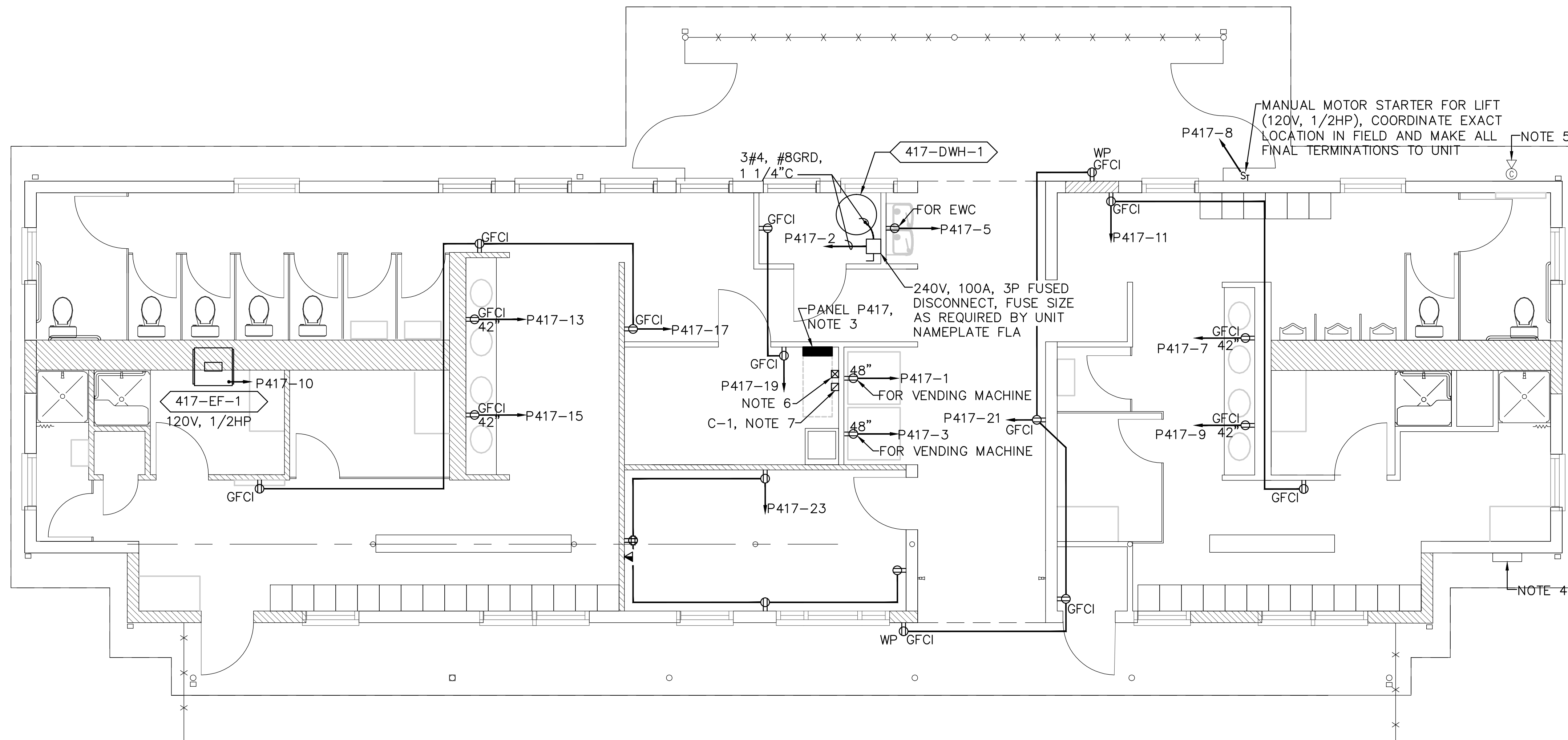


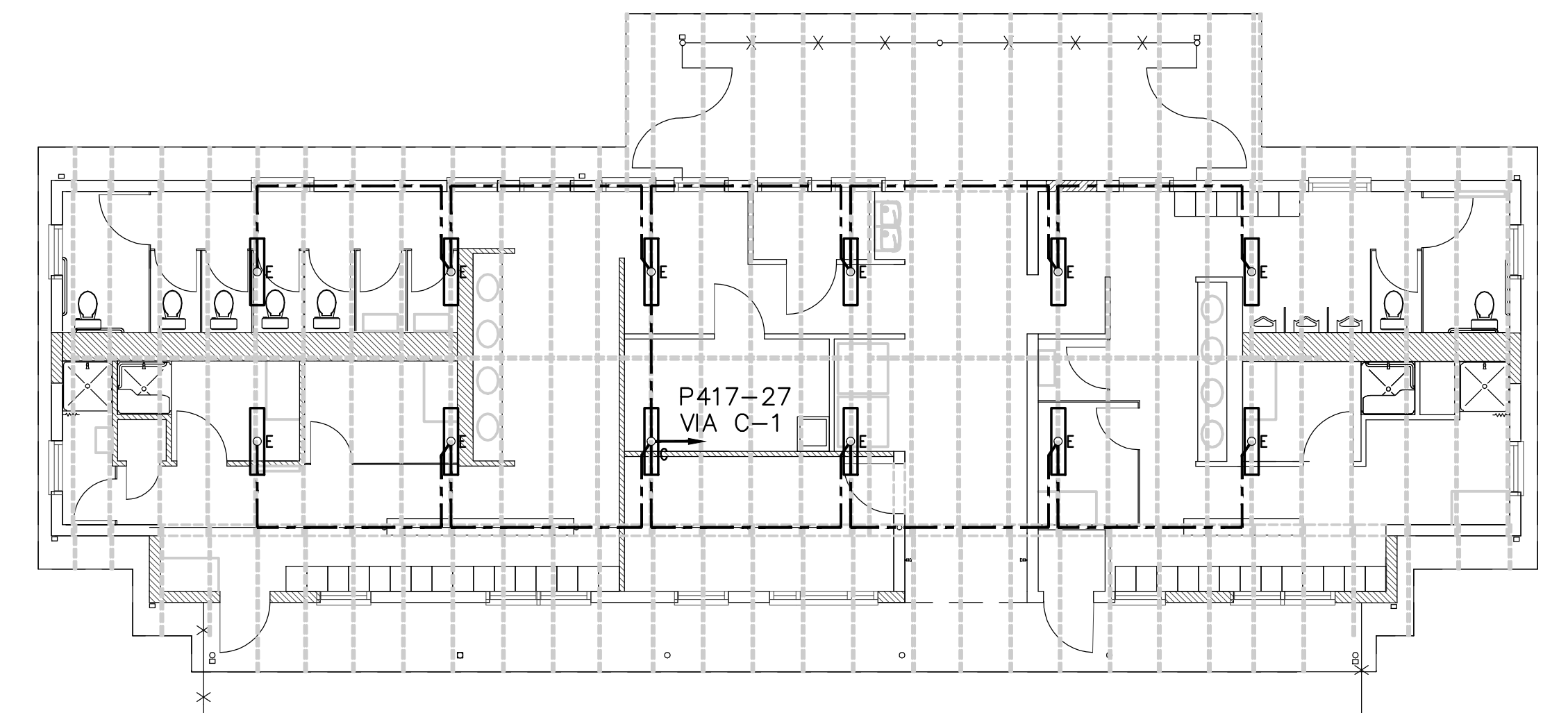
0A\201129-00\DWG\5451022417E101.dwg, 5/20/2012 2:00:02 AM Jim P. Miller
one eighth inch = one foot
one quarter inch = one foot
one half inch = one foot
three eighths inch = one foot
one inch = one foot
one and one half inches = one foot
two inches = one foot
three inches = one foot
four inches = one foot
six inches = one foot
eight inches = one foot
ten inches = one foot
twelve inches = one foot



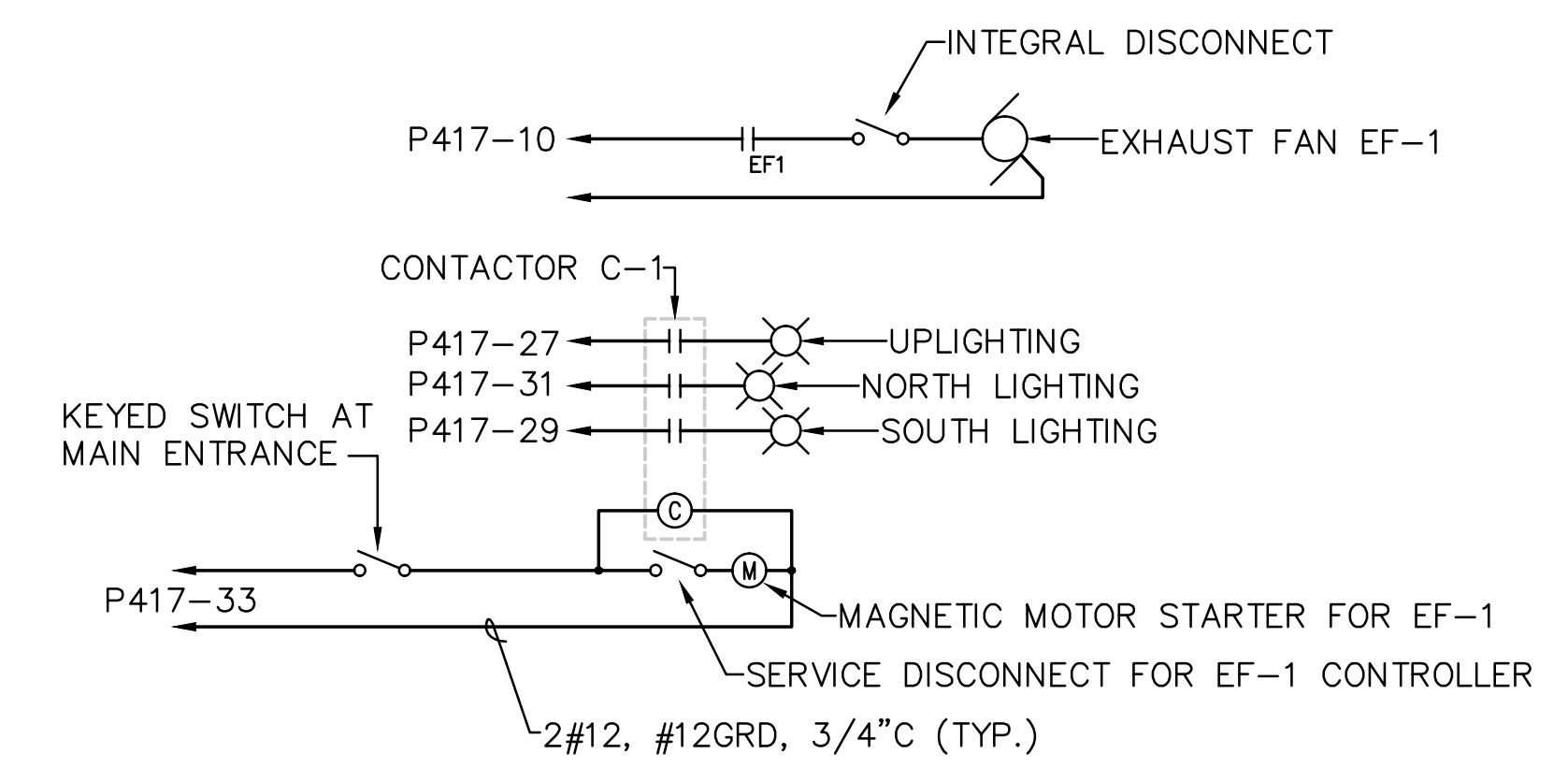
BUILDING 417 - FLOOR PLAN - LIGHTING
SCALE: 1/4"=1'-0"
NOTES 1,2



BUILDING 417 - FLOOR PLAN - POWER & SYSTEMS
SCALE: 1/4"=1'-0"



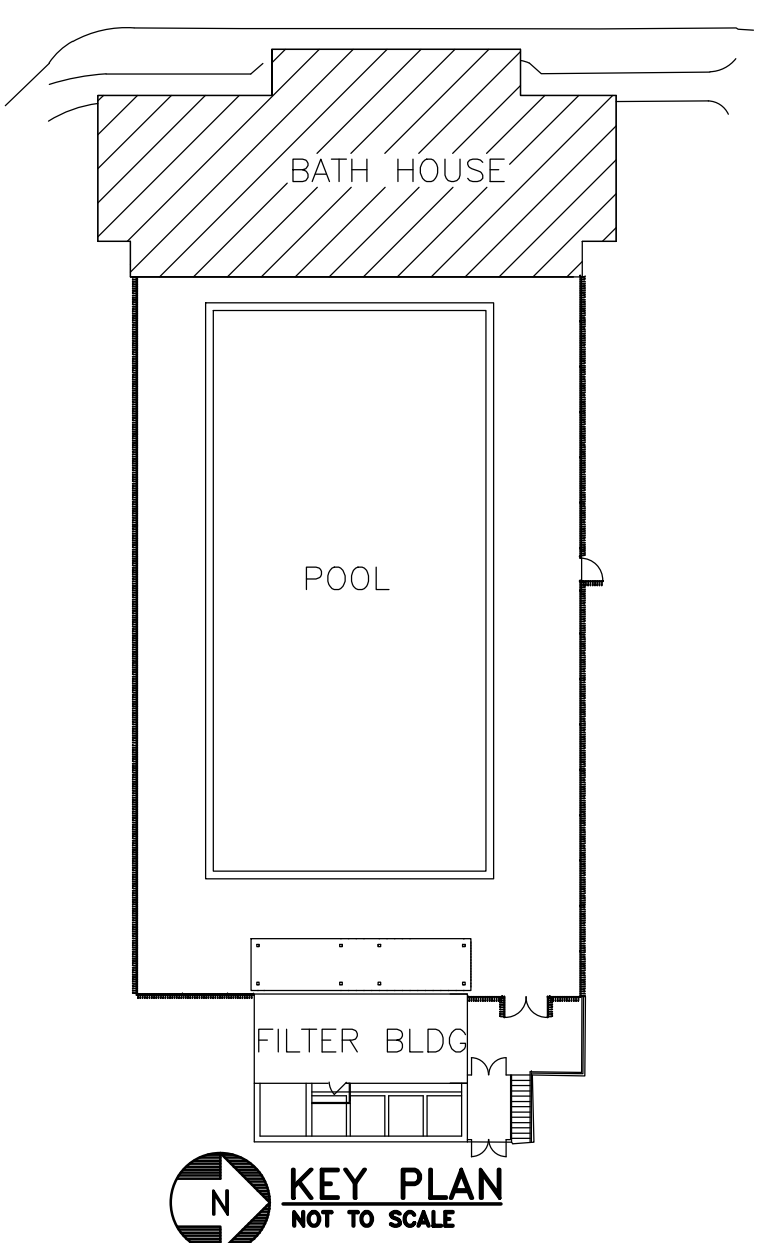
BUILDING 417 - FLOOR PLAN - UPLIGHTING
SCALE: 1/8"=1'-0"



DETAIL 1
NO SCALE
LIGHTING AND VENTILATION CONTROL
WIRING DIAGRAM

NOTES:

1. ALL FINAL LOCATIONS AND ARRANGEMENTS OF LIGHTING FIXTURES SHALL BE OBTAINED FROM THE ARCHITECTURAL REFLECTED CEILING PLAN.
2. ALL EXIT SIGNS AND EMERGENCY LIGHTING HEADS SHALL BE WIRED TOGETHER AND CONNECTED BACK TO EMERGENCY LIGHTING INVERTER CABINET, ALL WIRING FOR ENTIRE CIRCUIT SHALL BE 2#12, #12GRD, IN 3/4"C.
3. FURNISH AND INSTALL 4#1/0 AND #6GRD IN EXISTING 1 1/2"C FROM EXISTING DISTRIBUTION PANEL DP-HA TO PANEL P417 (APPROXIMATELY 125'). EXTEND EXISTING UNDERGROUND 1 1/2"C CONDUIT AS REQUIRED. FURNISH AND INSTALL #6 GROUNDING ELECTRODE CONDUCTOR TO GROUND PANELBOARD IN ACCORDANCE WITH NEC 250.32.
4. EXISTING TELEPHONE ENCLOSURE TO REMAIN, EXTEND CAT6 CABLE IN 1"C FROM TELEPHONE OUTLET IN POOL OFFICE TO TELEPHONE OFFICE AND TERMINATE TO EXISTING PUNCH DOWN BLOCK. CABLE INSTALLATION SHALL BE TESTED TO ALL APPLICABLE TIA/EIA STANDARDS.
5. RELOCATED EXISTING CCTV CAMERA, ENCLOSURE, AND ACCESSORIES. MOUNT TO EXTERIOR OF BUILDING AS HIGH AS POSSIBLE, VERIFY EXACT LOCATION AND AIMING IN FIELD. REROUTE EXISTING CABLING AS REQUIRED ON EXTERIOR OF BUILDING.
6. SINGLE-PHASE 120V MAGNETIC MOTOR STARTER IN NEMA 1 ENCLOSURE FOR EXHAUST FAN EF-1. MOTOR STARTER SHALL BE CONTROLLED BY KEY-OPERATED WALL SWITCH. REFER TO WIRING DIAGRAM, DETAIL 1 THIS SHEET.
7. 120V, 3P LIGHTING CONTACTOR IN NEMA 1 ENCLOSURE FOR BUILDING LIGHTING. CONTACTOR SHALL BE CONTROLLED BY KEY-OPERATED WALL SWITCH. REFER TO WIRING DIAGRAM, DETAIL 1 THIS SHEET.



100% CONSTRUCTION DOCUMENTS

CONSULTANTS: Barton Associates Consulting Engineers Superior Business Center Center North Building 221 West Philadelphia Street York, PA 17403 Tel: (717) 845-1054 Web: www.barton-associates.com We Make Buildings Work. PROJECT NO. 2011129.00 DATE 05-04-12 DESIGNED BY WLS CHECKED BY BSB Copyright © 2012 Barton Associates, Inc.		ARCHITECT/ENGINEERS: SAA architects 600 North Hartley Street, Suite 150 York, PA 17404 T 717.843.3200 F 717.699.0205 www.saaarchitects.com		Drawing Title BUILDING 417 - FLOOR PLAN - ELECTRICAL	Project Title RECREATIONAL POOL FACILITY RENOVATIONS BATH HOUSE	Project Number 613-11-140	Office of Construction and Facilities Management Department of Veterans Affairs
Approved Project Director		Location VAMC, MARTINSBURG, WV		Date 05-04-12	Building Number 417	Drawing Number 417-E101	
				Checked -	Drawn -	Dwg. of -	