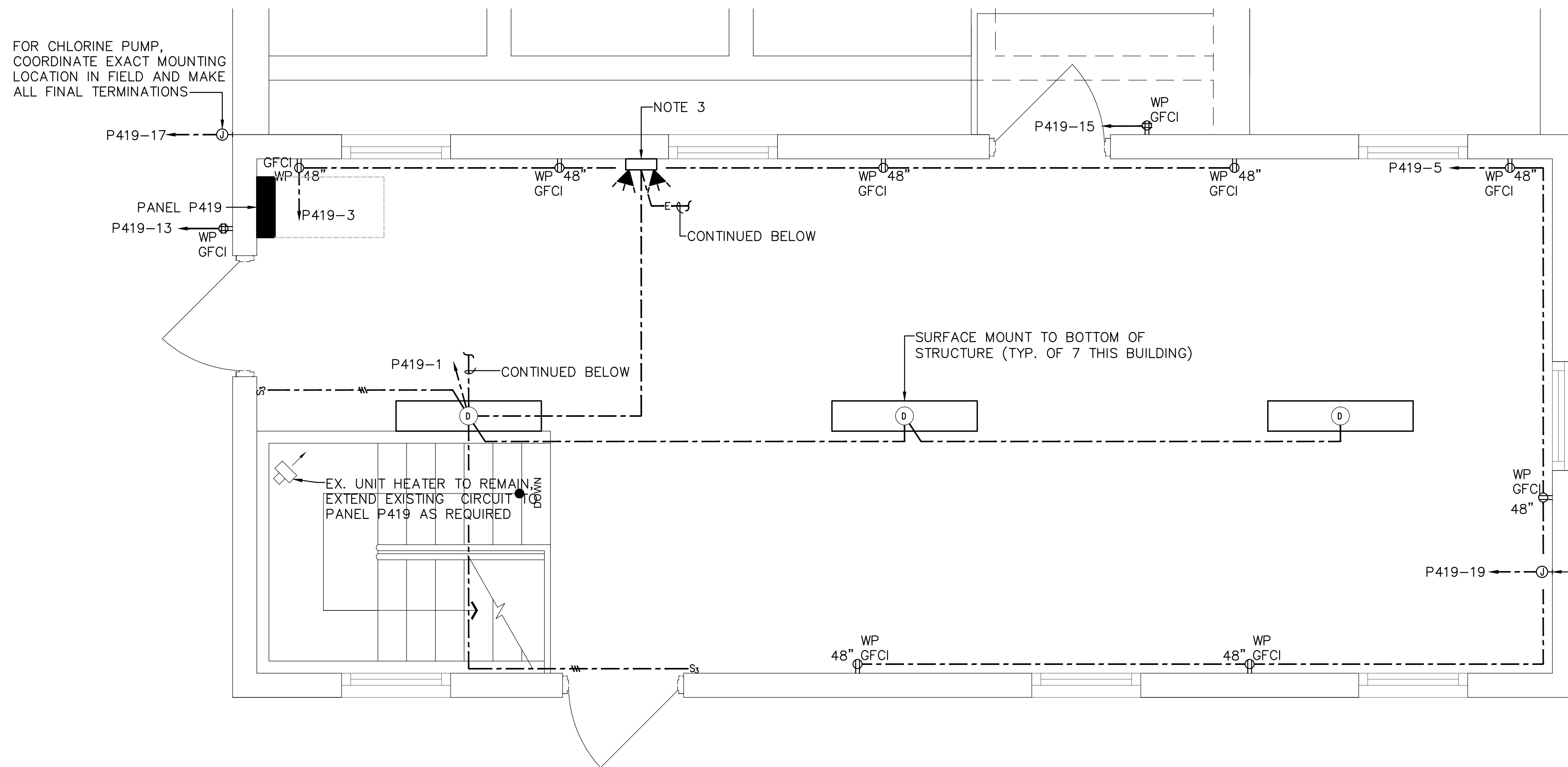


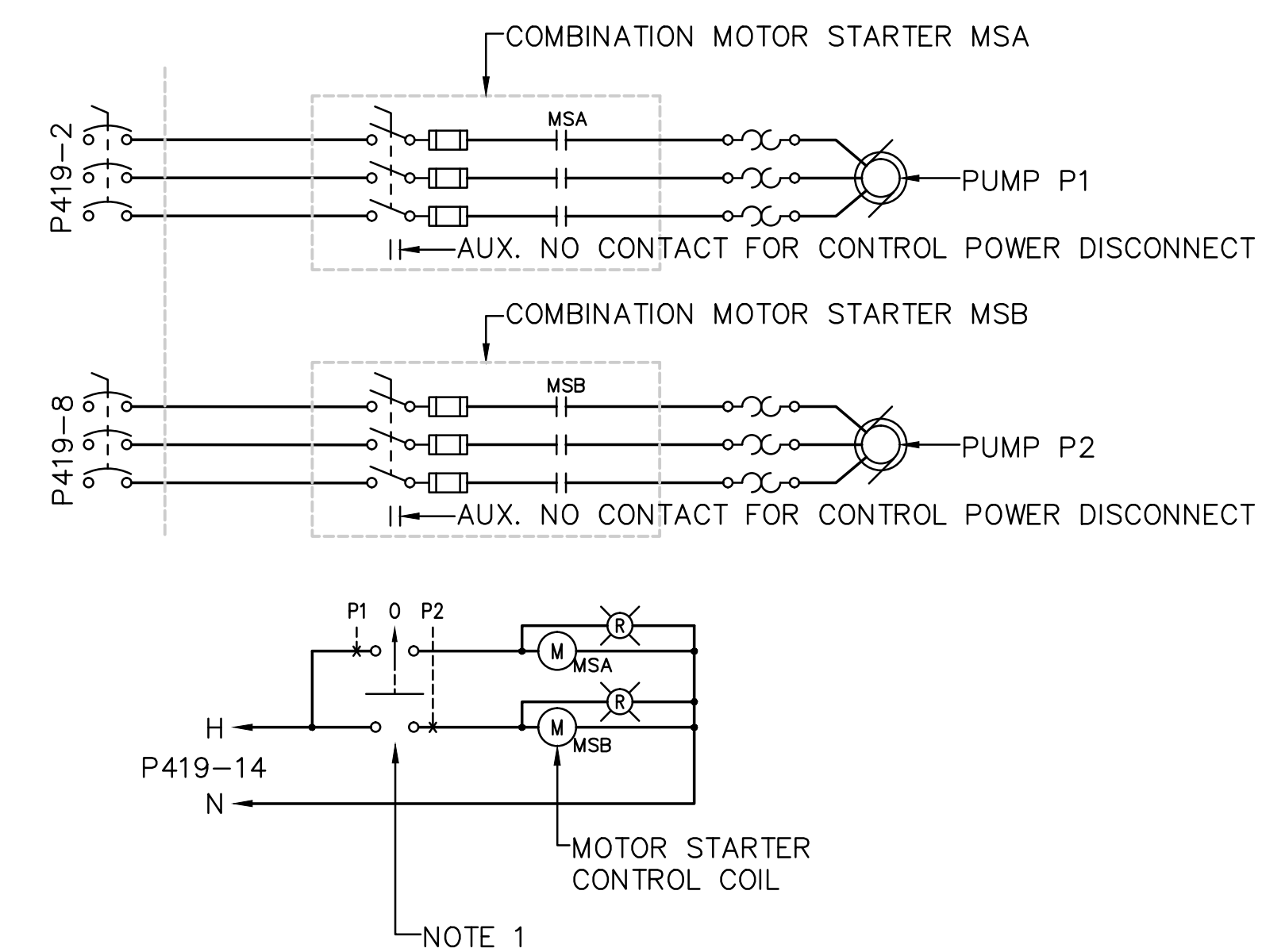
BUILDING 419 - LOWER LEVEL FLOOR PLAN - ELECTRICAL
SCALE: 1/2"=1'-0"



BUILDING 419 - UPPER LEVEL FLOOR PLAN - ELECTRICAL
SCALE: 1/2"=1'-0"

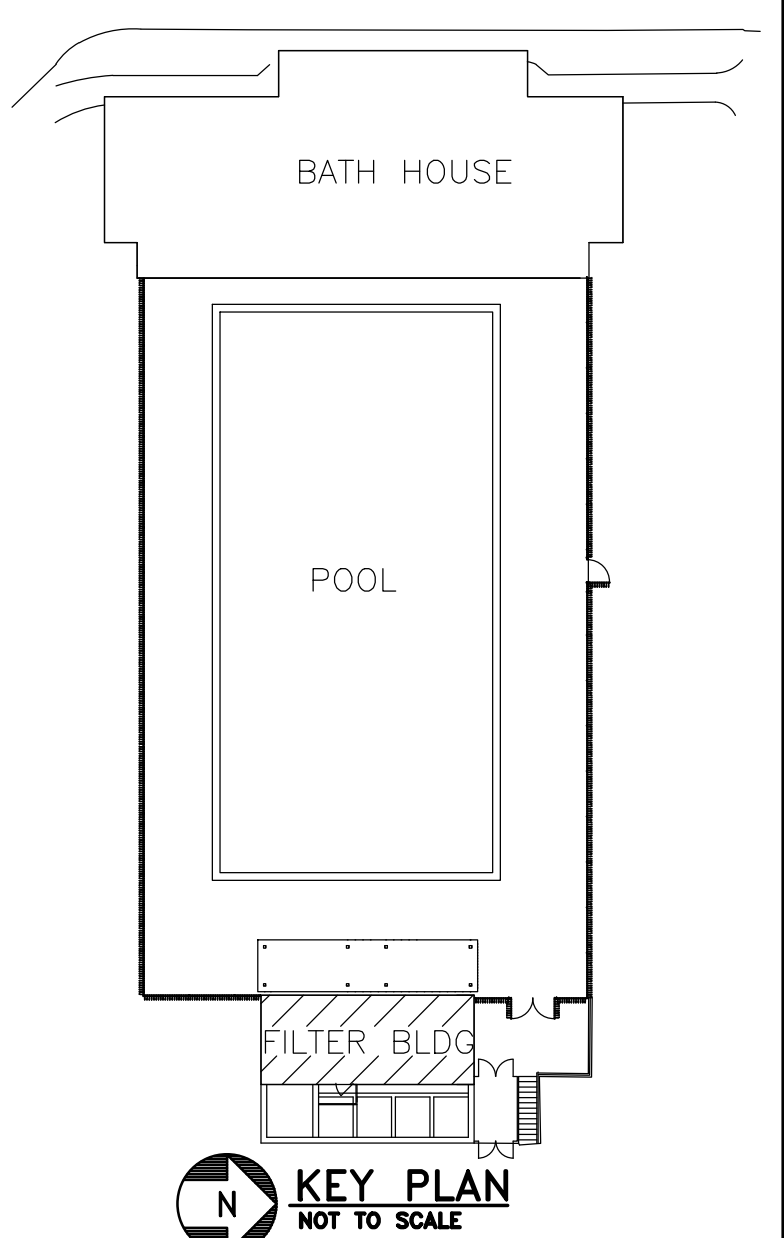
NOTES:

1. WALL-MOUNTED PUMP CONTROL STATION, CONTROL STATION SHALL HAVE SELECTOR SWITCH AS SHOWN ON WIRING DIAGRAM CAPABLE OF SELECTING PUMP P1-OFF-PUMP P2 AND TWO RED PILOT LIGHTS INDICATING WHICH PUMP IS ENERGIZED. FURNISH AND INSTALL IN STAINLESS STEEL ENCLOSURE WITH PERMANENT ENGRAVED LABELS. VERIFY EXACT MOUNTING LOCATION OF CONTROL STATION WITH OWNER BEFORE ROUGH-IN.
2. FVNR COMBINATION MOTOR STARTER IN NEMA 4X STAINLESS STEEL ENCLOSURE FOR PUMP, VERIFY EXACT MOUNTING LOCATION IN FIELD. MOTOR STARTER SHALL BE 240V/3P, AUXILIARY NO AND NC CONTACTS AND H-O-A CONTROLS, DISCONNECT SHALL BE FUSED (FUSING AS DETERMINED IN FIELD BY MOTOR FLA).
3. EMERGENCY LIGHTING UNIT, UNIT SHALL BE SIZED AS REQUIRED FOR FOR CONNECTED LOAD AND WIRED TO UNSWITCHED LEG OF LIGHTING CIRCUIT IN ROOM.



DETAIL 1
NO SCALE
PUMP CONTROL WIRING DIAGRAM

SYMBOL SCHEDULE - CONTROLS	
SYMBOL	DESCRIPTION
	FUSED DISCONNECT SWITCH
	CIRCUIT BREAKER
	SELECTOR SWITCH
	CONTACTS, NORMALLY OPEN
	COIL, MOTOR STARTER, DESIGNATION AS INDICATED
	THERMAL OVERLOADS
	RED PILOT LIGHT, NON PUSH-TO-TEST



100% CONSTRUCTION DOCUMENTS

CONSULTANTS: Barton Associates Consulting Engineers 221 West Philadelphia Street York, PA 17403 Tel: (717) 845-1054 Web: www.barton-assoc.com PROJECT NO. 2011129.00 DATE 05-04-12 CHECKED BY XXX DRAWN BY XXX		ARCHITECT/ENGINEERS: SAA architects 600 North Hartley Street, Suite 150 York, PA 17404 T 717.843.3200 F 717.699.0205 www.saaarchitects.com		Drawing Title BUILDING 419 - ELECTRICAL	Project Title RECREATIONAL POOL FACILITY RENOVATIONS FILTER BUILDING	Project Number 613-11-140	Office of Construction and Facilities Management Department of Veterans Affairs
Approved Project Director		Location VAMC, MARTINSBURG, WV		Building Number 419	Drawing Number 419-E101		
Date 05-04-12		Checked -		Drawn -	Dwg. of		