

GENERAL NOTES:

<div style="border: 1px solid black; height: 150px; width: 100%;"></div>		6-21-12
CHANGED NOTE # 5 TO ADD REFLECTIVE ADHESIVE		
Revision		Date

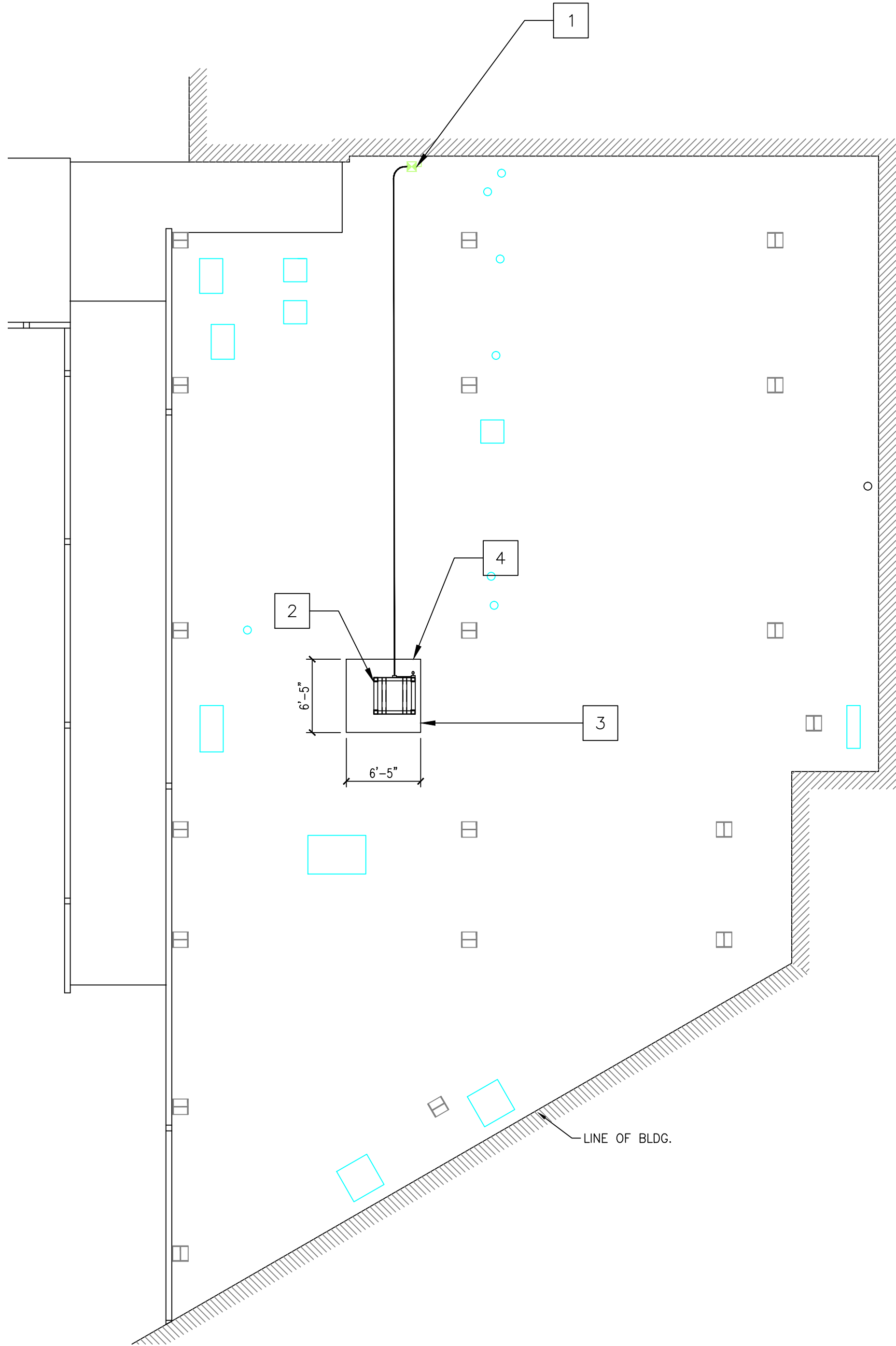
RECOMMEND APPROVAL			
REQUESTER	Date		
CHIEF OF SERVICE	Date	CHIEF OF STAFF	Date
ASSOC. DIR. PATIENT CARE SVC.	Date	ASSOC. DIR. for OPERATIONS	Date
APPROVAL BY:			Date
MEDICAL CENTER DIRECTOR			

	Drawing Title
te	ROOFING NOTES, DETAILS
te	Approved: Safety Manager/M&O Supervisor
te	Approved: Chief of Facilities Management Svr

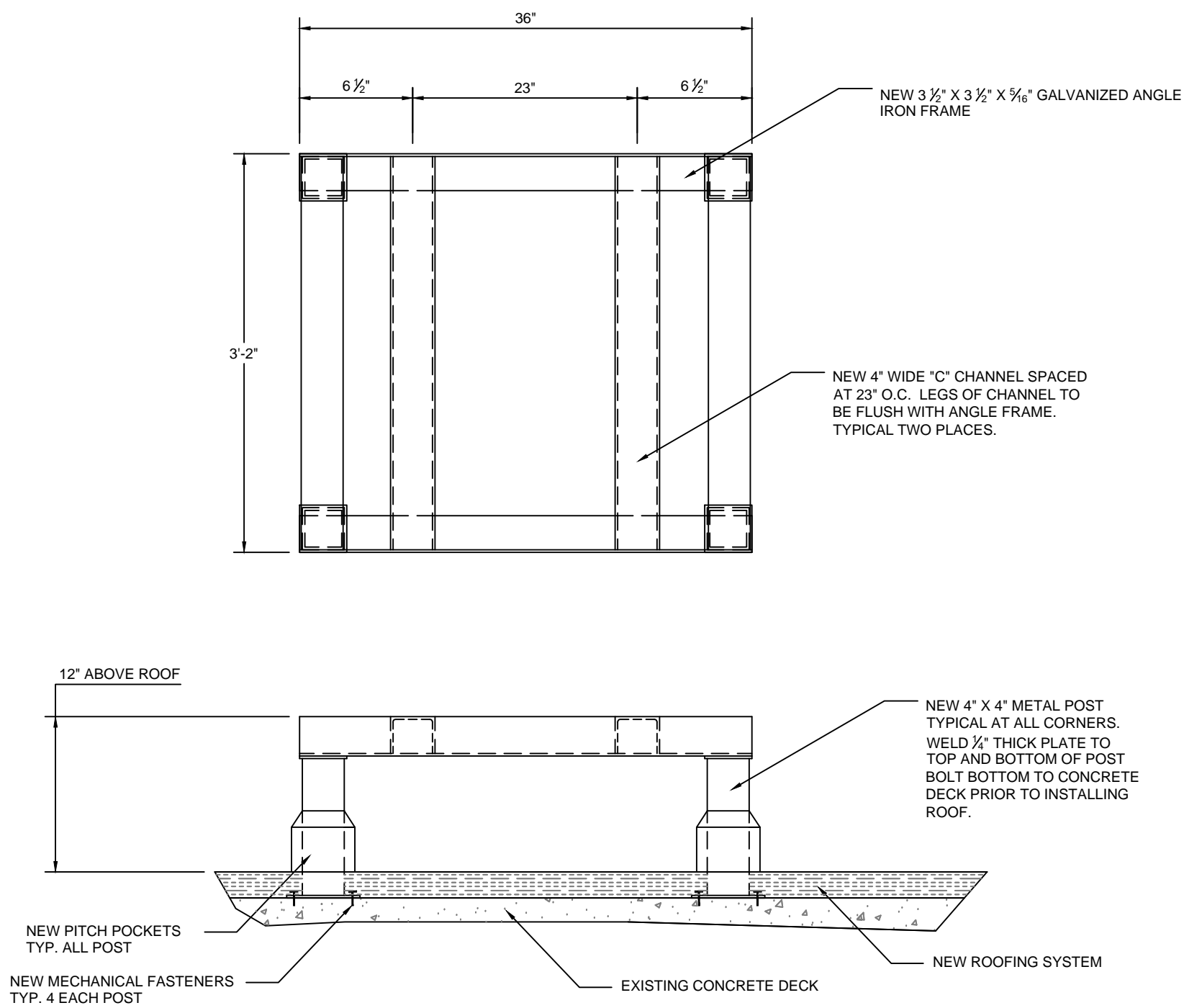
Project Title			
REPLACE SPD ROOF SYSTEM			
Building Number	Checked	Drawn	
B2-GRND	JM	GLM	
Location			
W.G.(Bill) Hefner Medical Center 1601 Brenner Ave. Salisbury NC 28144			

Date	4-21-2012
Project No.	659-12-207
DRAWING NO.	1R
DWG.	1 OF 2

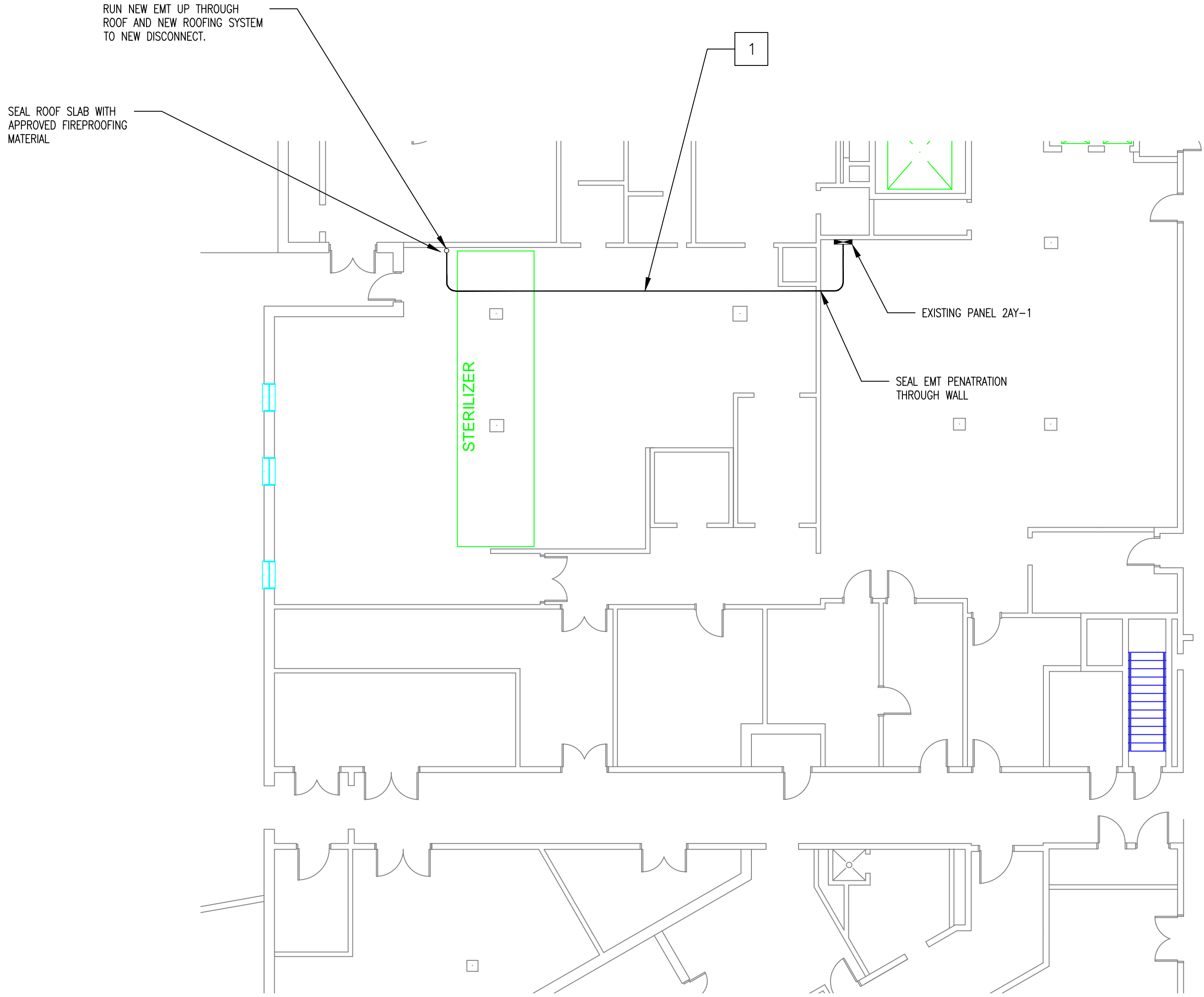
Department of
Veterans Affairs



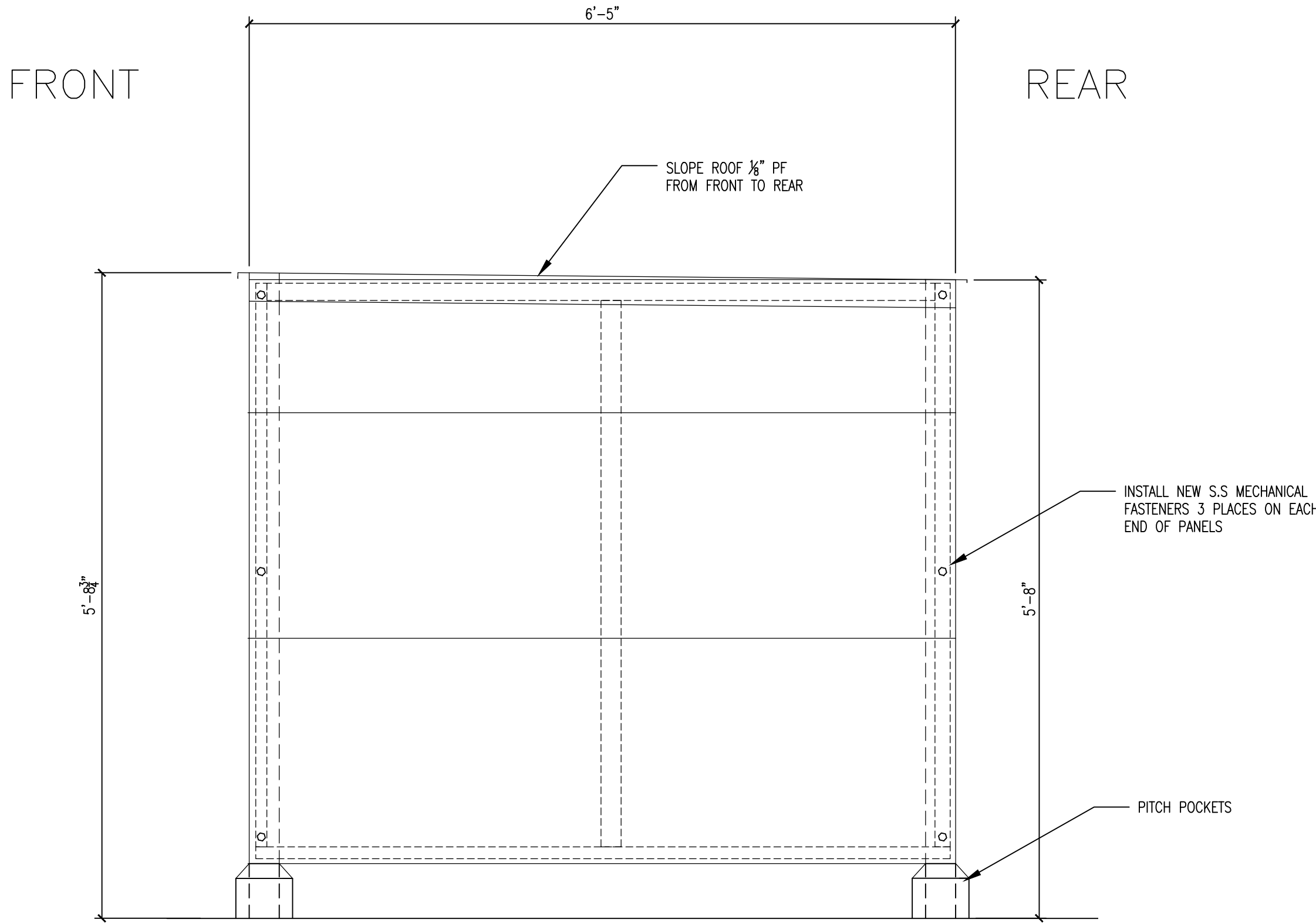
ABATOR ROOF LOCATION PLAN
1/8" = 1'-0"



ABATOR RACK
N.T.S.



ELECTRICAL PLAN
N.T.S.



METAL STRUCTURE FOR ABATOR
N.T.S.

GENERAL NOTES:

1. INSTALL A NEW 40 AMP SINGLE PHASE BREAKER AND A 20 AMP INTO EXISTING PANEL 2AY-1. REMOVE AND TURN OVER TO VA ANY BREAKER REMOVED TO INSTALL NEW BREAKERS. RUN NEW EMT AND CONDUCTORS ABOVE CEILING AND UP THROUGH NEW ROOF DISCONNECT. RUN NEW EMT AND CONDUCTORS FROM DISCONNECT TO NEW METAL FRAME AND END WITH A 4" X 4" J.B. LEAVE 3' OF EXTRA FEET OF CONDUCTORS INSIDE OF J.B. FOR CONNECTION OF NEW EQUIPMENT AND FROM J.B. RUN NEW EMT TO A J.B AND DUPLEX SERVICE RECEPTACLE WITH WEATHERPROOF COVER.
2. FABRICATE A NEW GALVANIZED METAL STRUCTURE FOR THE FUTURE INSTALLATION OF AN 3M EO ABATOR. THE NEW METAL STRUCTURE IS TO BE CONSTRUCTED OF METAL SQUARE POSTS BOLTED TO CONCRETE DECK WITH PITCH POCKETS.
3. CONSTRUCT A NEW METAL POST STRUCTURE WITH FOUR (4) SIDES AND A SLOPING TOP. POSTS ARE TO BE BOLTED TO CONCRETE DECK PRIOR TO NEW ROOFING SYSTEM BEING INSTALLED AND HAVE PITCH POCKETS AROUND EACH POST. THE SIZE OF THE STRUCTURE IS TO BE 76" WIDE X 66" LONG. CONSTRUCT NEW REMOVAL PANELS OF 24 GAUGE CORRUGATED METAL WITH LIGHT METAL STRUCTURAL FRAME. NEW CORRUGATED METAL TO BE COLORED AND SUBMIT A CHOICE OF COLORS TO CHOSE FROM DURING SUBMITTAL PHASE. PANELS ARE TO BE FASTENED BY STAINLESS STEEL MECHANICAL FASTENERS TO THE POST.
4. INSTALL NEW LIGHTNING PROTECTION ON NEW METAL STRUCTURE AND CERTIFY BY A LICENCE LIGHTNING PROTECTION CONTRACTOR THAT THIS AREA IS U.L CERTIFIED.

Revision		Date	RECOMMEND APPROVAL				Drawing Title		Project Title		Date			Department of Veterans Affairs	
			REQUESTER	Date	CHIEF OF SERVICE	Date	CHIEF OF STAFF	Date	ELECTRICAL, FRAME DETAILS AND NOTES		REPLACE SPD ROOF SYSTEM				4-21-2012
			ASSOC. DIR. PATIENT CARE SVC.	Date	ASSOC. DIR. for OPERATIONS	Date	Approved: Safety Manager/M&O Supervisor		Building Number	Checked	Drawn	Project No.		DRAWING NO.	2
			APPROVAL BY:			Date	Approved:Chief of Facilities Management Svr.		B2-GRND	W.G.(Bill) Hefner	GLM	659-12-207			
			MEDICAL CENTER DIRECTOR						1601 Brenner Ave. Salisbury NC 28144						