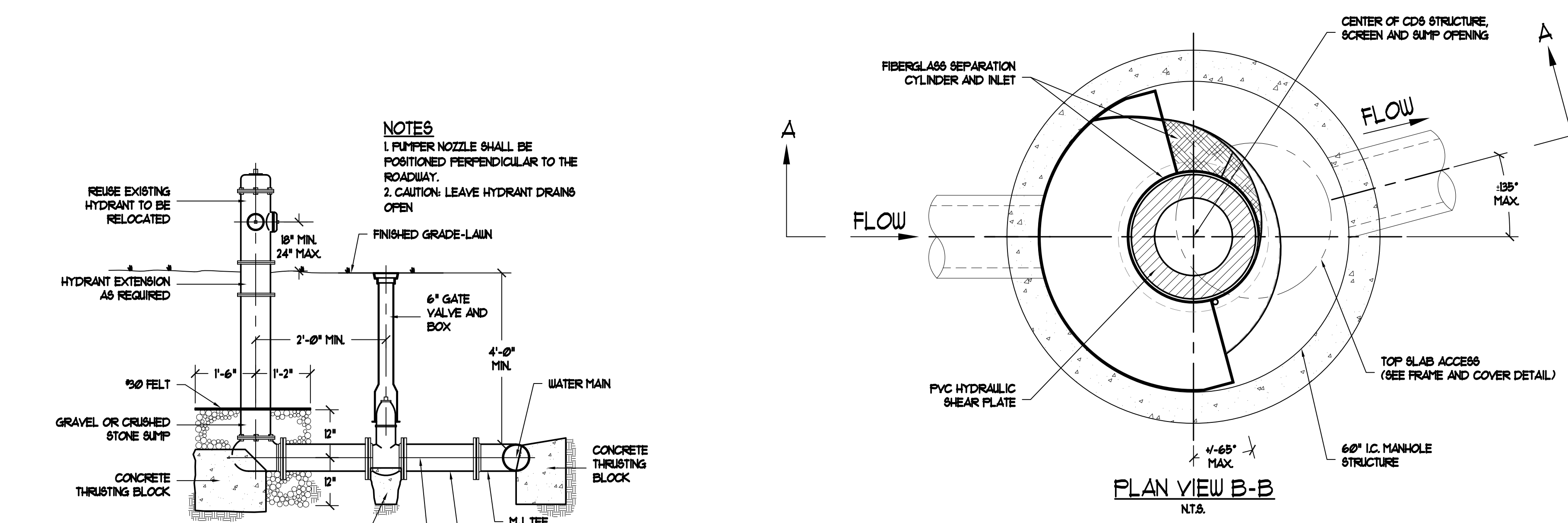
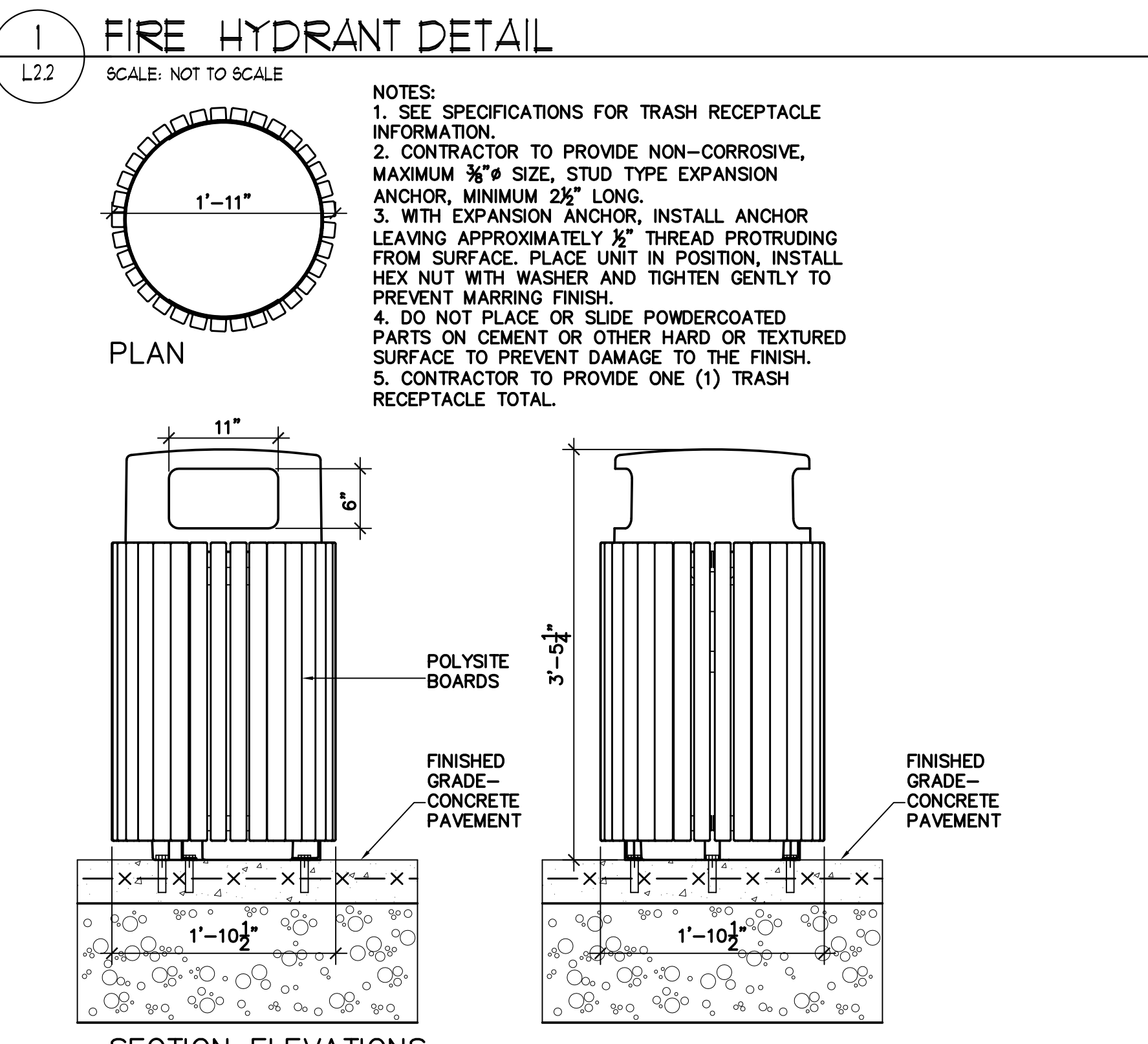


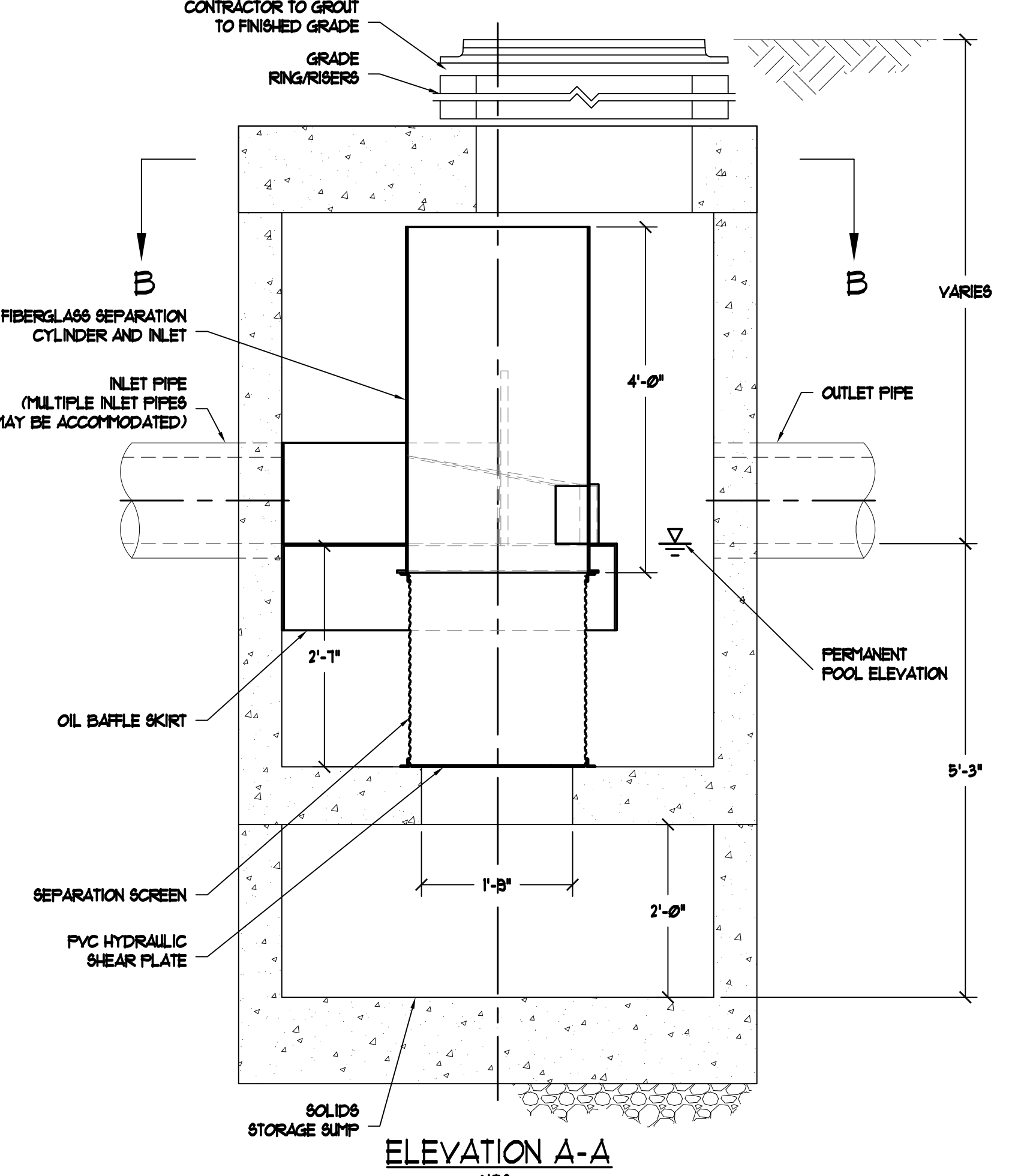
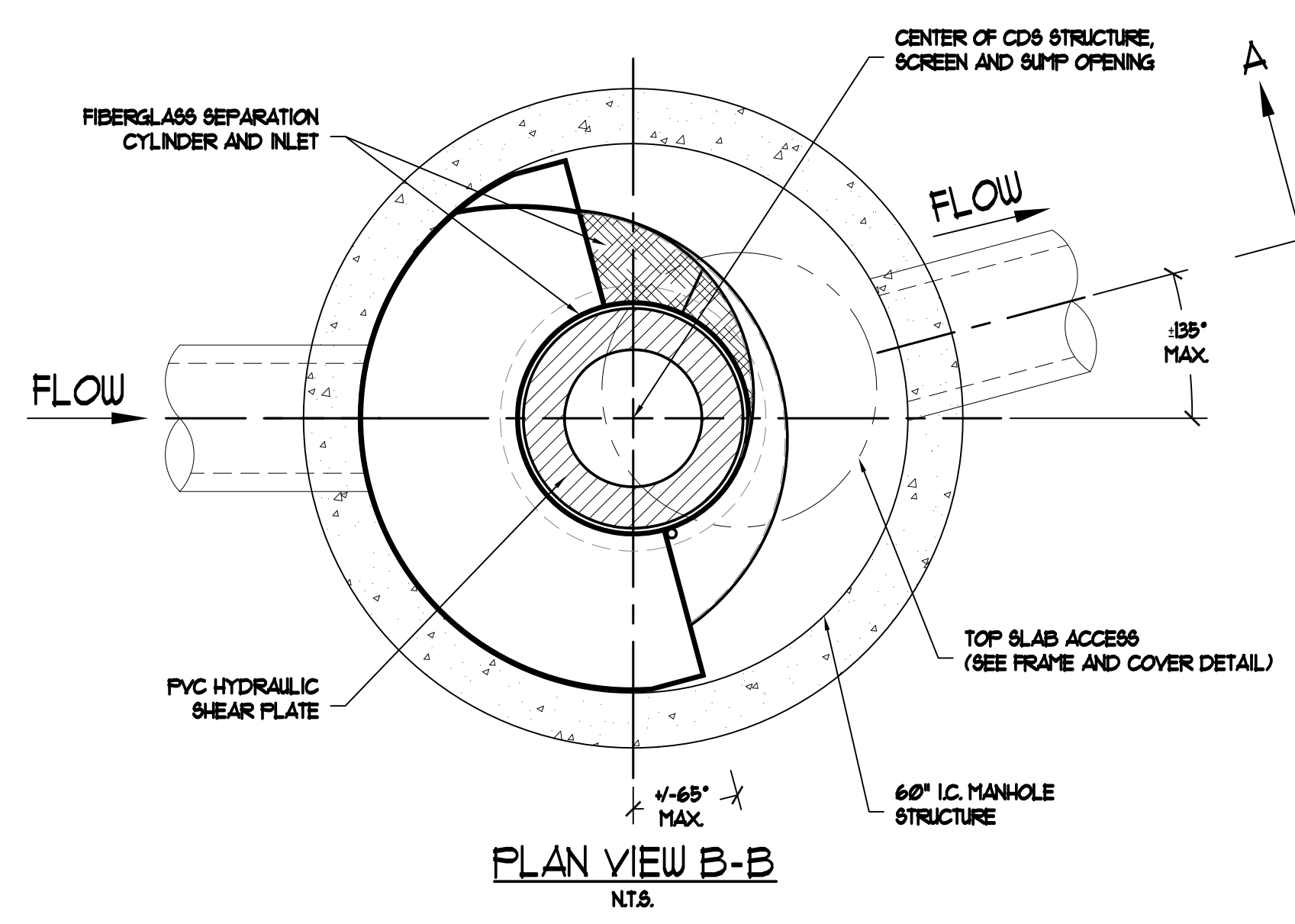
three inches = one foot  
one and one half inches = one foot  
one inch = one foot  
one inch = one foot  
three quarters inch = one foot  
one half inch = one foot  
one half inch = one foot  
three eighths inch = one foot  
one quarter inch = one foot  
one eighth inch = one foot  
one eighth inch = one foot



**HYDRANT DRAIN NOTES:**  
1. HYDRANT DRAINS SHOULD BE PLUGGED. WHEN THE DRAINS ARE PLUGGED, THE BARRELS MUST BE RINSED DRY AFTER USE. DURING FREEZING WEATHER WHERE HYDRANT DRAINS ARE NOT PLUGGED, A GRAVEL POCKET OR DRY WELL SHALL BE PROVIDED UNLESS THE NATURAL SOILS WILL PROVIDE ADEQUATE DRAINAGE. HYDRANT DRAINS SHALL NOT BE CONNECTED TO OR LOCATED WITHIN 10 FEET OF SANITARY SEWERS OR STORM DRAINS. IF GROUND WATER TO FINISH GRADE IS LESS THAN 1 FEET, HYDRANT WEEP HOLES SHALL BE PLUGGED.



**2** **SECTION ELEVATIONS TRASH RECEPTACLE DETAIL**  
SCALE: 1/4"=1'-0"



**4** **INLINE CD3 STANDARD HYDRODYNAMIC SEPARATOR DETAIL**  
SCALE: NOT TO SCALE

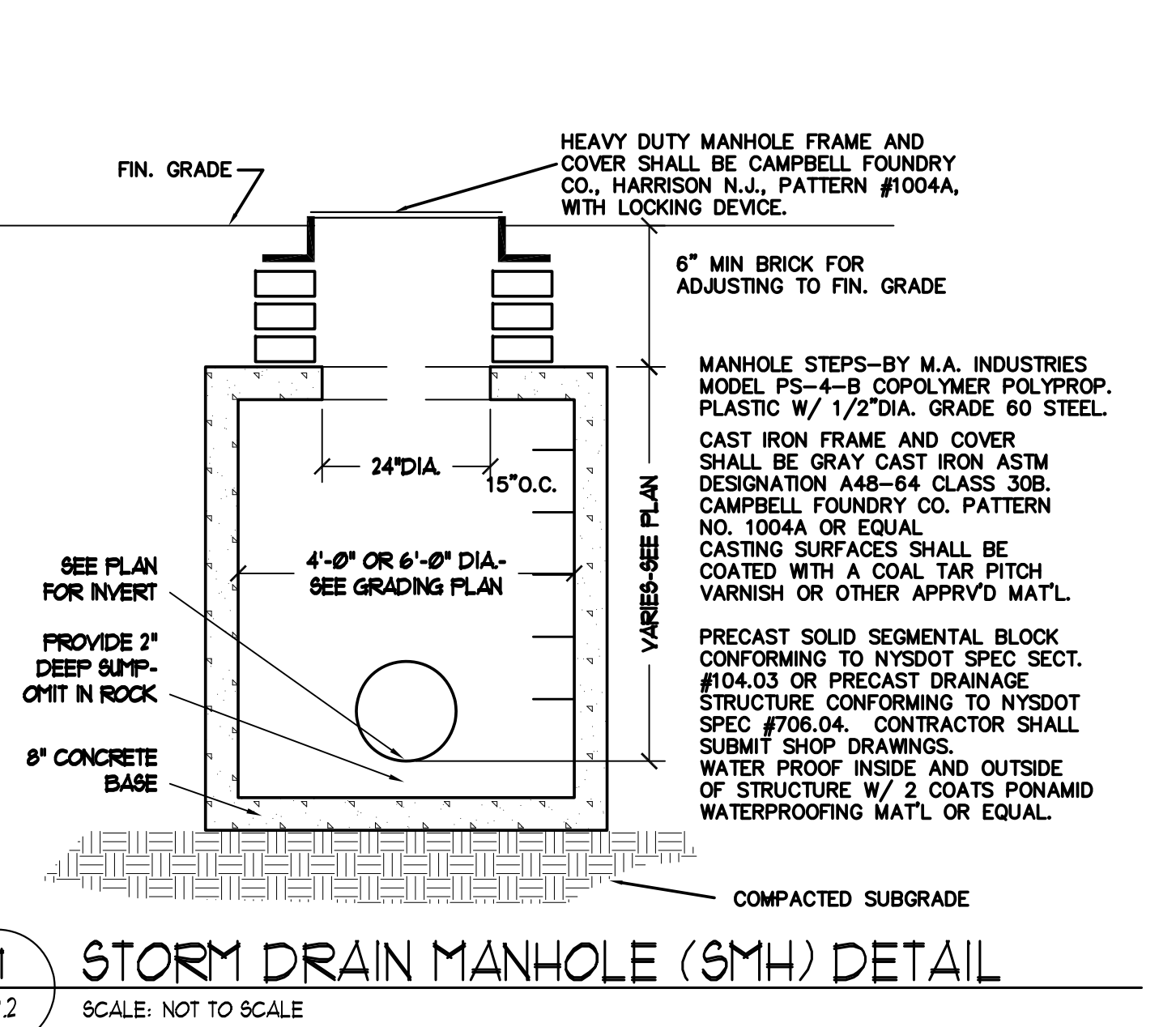
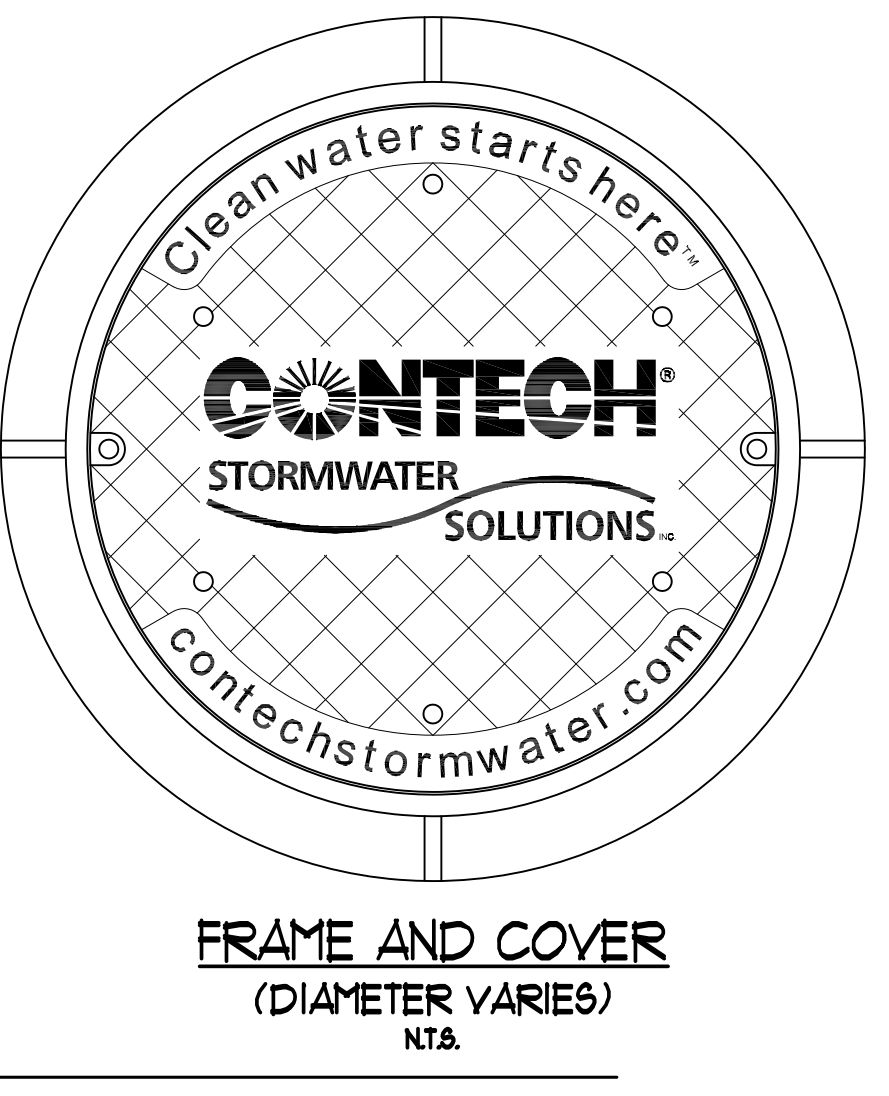


**EMERGENCY VEHICLES ONLY**

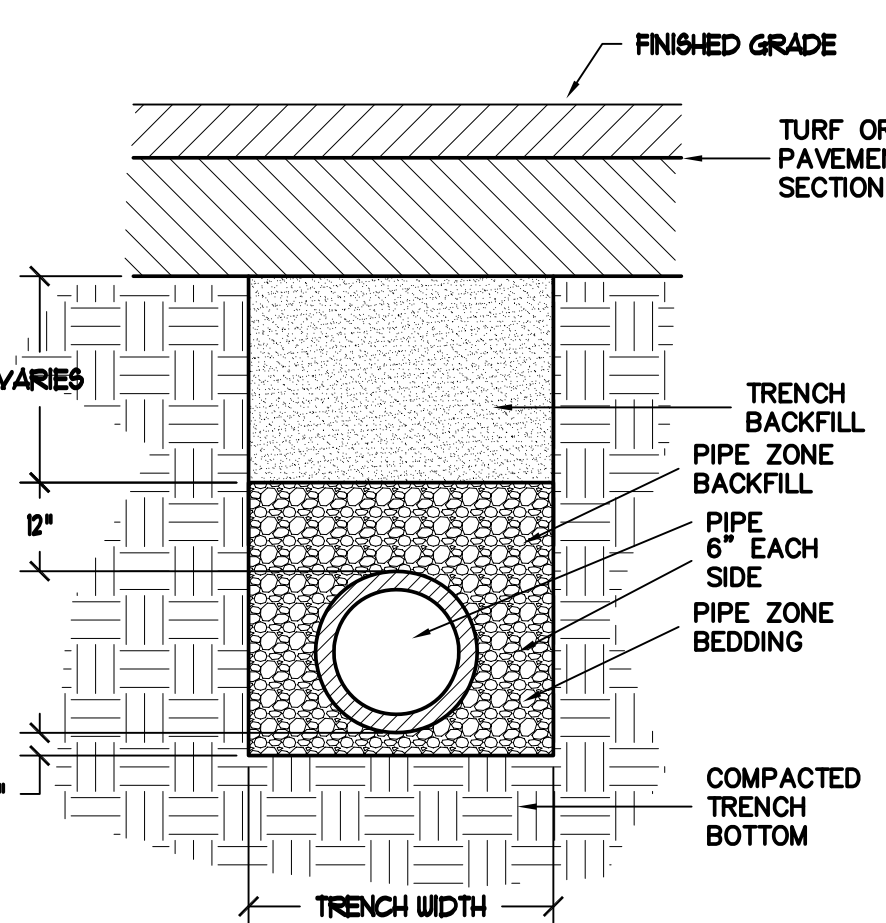
**PERMANENT SIGNAGE NOTES:**  
1. SIGN POSTS SHALL BE 2" DIA. GALVANIZED STEEL PIPE.  
2. ALL SIGNAGE AND TRAFFIC MEASURES SHALL ADHERE TO THE STANDARDS AND CODES OF THE MANUAL ON UNIFORM TRAFFIC CONTROL DEVICES FOR STREETS AND HIGHWAYS OF THE UNITED STATES DEPARTMENT OF TRANSPORTATION FEDERAL HIGHWAY ADMINISTRATION.  
3. ALL SIGNS SHALL BE CONVENTIONAL ROAD SIZE AS PER MUTCD STANDARDS.  
4. ALL SIGNS SHALL BE MANUFACTURED WITH RUST FREE ALUMINUM LAMINATED WITH ENGINEERING GRADE REFLECTIVE (TYPE I).  
5. ALL SIGNS SHALL HAVE A WHITE BACKGROUND WITH A BLACK LEGEND AND BORDER UNLESS OTHERWISE STATED ON DRAWINGS OR IN MUTCD MANUAL FOR A SPECIFIC SIGN.  
6. SIGNS SHALL BE CONSTRUCTED AS SHOWN ON APPROPRIATE MUTCD STANDARD SHEETS AND MANUFACTURER'S DRAWINGS.  
7. PANELS AND STIFFENER DIMENSIONS, SPACING AND PANEL TO STIFFENER CONNECTION DETAILS SHALL BE AS SHOWN ON THE MUTCD 'SIGN BLANK DETAILS' STANDARD SHEET.  
8. BRACKETS SHALL BE MOUNTED WITH THE SAME POST CONNECTION VERTICAL SPACING AS SHOWN ON THE MUTCD 'SIGN BLANK DETAILS' STANDARD SHEET.  
9. REFER TO NYS DOT POLE-MOUNTED SIGNS DETAILS FOR SIGN MOUNTING DETAIL AND INFORMATION.  
10. ALL PLACEMENT OF TRAFFIC SIGNS TO BE PLACED IN ACCORDANCE WITH STATE OF NEW YORK DEPARTMENT OF TRANSPORTATION (NYSDOT) STANDARDS.  
11. PROVIDE 1" CLEARANCE FROM THE GROUND TO THE BOTTOM OF THE SIGN.  
12. PROVIDE LATERAL CLEARANCE OF 2" TYPICAL FROM THE FACE OF CURB FOR CURBED SECTIONS.  
13. WHERE THERE ARE PHYSICAL LIMITATIONS OR VISIBILITY CONSIDERATIONS, THE SIGNS SHALL BE LOCATED AS ORDERED BY THE OWNER'S REPRESENTATIVE.

PERMANENT TRAFFIC SIGNAGE MATRIX - STRATTON VA MEDICAL CENTER				
SIGN TYPE	QTY.	SIZE	VA SIGN TYPE	DESCRIPTION/COLOR
1. AMBULANCE ONLY	1	24"x30"	-	REFLECTORIZED WHITE BACKGROUND WITH RED BORDER AND RED LETTERING
2. PEDESTRIAN CROSSING	6	24"x24"	EN103	REFLECTORIZED WHITE BACKGROUND WITH RED LETTERING

**6** **TRAFFIC SIGN DETAIL - PERMANENT AND TEMPORARY**  
SCALE: NOT TO SCALE



**7** **STORM DRAIN MANHOLE (SMH) DETAIL**  
SCALE: NOT TO SCALE



**8** **PIPE TRENCH DETAIL**  
SCALE: NOT TO SCALE

**TEMPORARY SIGNAGE NOTES:**  
1. CONTRACTOR TO PROVIDE ALL NECESSARY CONSTRUCTION AREA SIGNAGE TO BE ATTACHED TO TEMPORARY CONSTRUCTION CHAINLINK FENCING COORDINATE WITH COTR.  
2. ALL TEMPORARY SIGNAGE AND TRAFFIC MEASURES SHALL ADHERE TO THE STANDARDS AND CODES OF THE MANUAL ON UNIFORM TRAFFIC CONTROL DEVICES FOR STREETS AND HIGHWAYS OF THE UNITED STATES DEPARTMENT OF TRANSPORTATION FEDERAL HIGHWAY ADMINISTRATION.  
3. ALL SIGNS SHALL BE CONVENTIONAL ROAD SIZE AS PER MUTCD STANDARDS, UNLESS OTHERWISE NOTED.  
4. ALL SIGNS SHALL BE MANUFACTURED WITH RUST FREE ALUMINUM LAMINATED WITH ENGINEERING GRADE REFLECTIVE (TYPE I).  
5. ALL SIGNS SHALL HAVE A WHITE BACKGROUND WITH A BLACK LEGEND AND BORDER UNLESS OTHERWISE STATED ON DRAWINGS OR IN MUTCD MANUAL FOR A SPECIFIC SIGN.  
6. SIGNS SHALL BE CONSTRUCTED AS SHOWN ON APPROPRIATE MUTCD STANDARD SHEETS AND MANUFACTURER'S DRAWINGS.  
7. PANELS AND STIFFENER DIMENSIONS, SPACING AND PANEL TO STIFFENER CONNECTION DETAILS SHALL BE AS SHOWN ON THE MUTCD 'SIGN BLANK DETAILS' STANDARD SHEET.  
8. BRACKETS SHALL BE MOUNTED WITH THE SAME POST CONNECTION VERTICAL SPACING AS SHOWN ON THE MUTCD 'SIGN BLANK DETAILS' STANDARD SHEET.  
9. REFER TO NYS DOT POLE-MOUNTED SIGNS DETAILS FOR SIGN MOUNTING DETAIL AND INFORMATION.  
10. ALL TEMPORARY TRAFFIC SIGNS SHALL BE LOCATED AS ORDERED BY THE COTR.  
11. ALL TEMPORARY SIGNAGE TO BE MOUNTED ON HEAVY DUTY BASES, HIFRO350 BASES USED WITH A PAIR OF 8" U-CHANNEL OR SQUARE POSTS, HIFRO350 SERIES 33 (33"x60" BASE) OR APPROVED EQUAL.

TEMPORARY SIGNAGE MATRIX - STRATTON VA MEDICAL CENTER				
SIGN TYPE	QTY.	SIZE	VA SIGN TYPE	DESCRIPTION/COLOR
A' CUSTOM DETOUR SIGN	-	24"x24"	X-M14-B	REFLECTORIZED ORANGE BACKGROUND WITH BLACK LETTERING CUSTOM TEXT 'USE MAIN ENTRANCE'
B' STRAIGHT THRU SYMBOL	-	18"x24"	X-M1-2	REFLECTORIZED GREEN BACKGROUND WITH WHITE ARROW
B' DETOUR (RIGHT ARROW)	-	24"x30"	X-M14-9R	REFLECTORIZED ORANGE BACKGROUND WITH BLACK LETTERING
B' PATH FOR PUBLIC TRAFFIC (RIGHT ARROW)	-	8"x24"	K-3881 CUSTOM	REFLECTORIZED WHITE BACKGROUND WITH BLACK LETTERING
C' DETOUR (LEFT ARROW)	-	24"x30"	X-M14-9L	REFLECTORIZED ORANGE BACKGROUND WITH BLACK LETTERING
C' PATH FOR PUBLIC TRAFFIC (LEFT ARROW)	-	8"x24"	K-3884 CUSTOM	REFLECTORIZED WHITE BACKGROUND WITH BLACK LETTERING
D' RIGHT ARROW	-	12"x24"	K-164	REFLECTORIZED YELLOW BACKGROUND WITH BLACK LETTERING
E' LEFT ARROW	-	12"x24"	K-164	REFLECTORIZED WHITE BACKGROUND WITH RED

NOTE: ALL TEMPORARY SIGN QUANTITIES TO BE DETERMINED BY COTR.

FINAL DESIGN (100%)  
FULLY SPRINKLERED

**CONSULTANTS:**

**FRIEDMAN FISHER ASSOCIATES, P.C.**  
237 University Road, Albany, New York 12205  
TEL: (518) 458-7040 FAX: (518) 458-7048  
mfa@friedmanfisher.com

**EBERLIN and EBERLIN, P.C.**  
247 ROUTE 100 SUITE 1003 SOMERS NEW YORK 10589  
CONSULTING ENGINEERS, PLANNERS, LANDSCAPE ARCHITECTS  
914.332.9431 PHONE 914.332.8827 FAX

**ARCHITECT/ENGINEERS:**

**Hyman Hayes ASSOCIATES**  
6 WEMBLEY COURT, ALBANY, NEW YORK 12205  
(518) 452-3470

**Robert J. Hayes**  
Professional Engineer  
No. 10044

**Drawing Title**  
SITE CONSTRUCTION DETAILS - 2

**Approved Project Director**  
HHA Proj. 10046

**Project Title**  
NEW EMERGENCY DEPARTMENT  
Stratton VA Medical Center

**Location**  
Albany, New York

**Date**  
JUNE 13, 2012

**Checked**

**Drawn**

**Project Number**  
VA 528-809

**Building Number**  
95

**Drawing Number**  
L2.2

**Dwg.** 10 of 115

**Office of Construction and Facilities Management**

**Department of Veterans Affairs**

**ADDENDUM 1**  
Revisions:  
1-24-12  
Date

**VA FORM 08-6231**