

three inches = one foot  
one and one half inches = one foot  
one inch = one foot  
three quarters inch = one foot  
one half inch = one foot  
three eighths inch = one foot  
one quarter inch = one foot  
one eighth inch = one foot

ROOM FINISH SCHEDULE										
ROOM		FLOOR	BASE	WALLS				CEILING	REMARKS	
NUMBER	NAME			NORTH	EAST	SOUTH	WEST			
A101	AUTOPSY	TER-1	TERB-1	PT-1	PT-1	PT-1	PT-1	PT-1	1	
A102	RESTROOM	EXISTING	EXISTING	EXISTING	EXISTING	EXISTING	EXISTING	EXISTING	-	
A103	HALL	TER-1	TERB-1	PT-1	-	PT-1	-	PT-1	1	
A104	HALL	TER-1	TERB-1	-	PT-1	-	-	PT-1	1	
A105	HALL	TER-1	TERB-1	PT-1	-	-	PT-1	PT-1	1	
A106	FREEZER	EXISTING	EXISTING	-	-	-	-	PT-1	1	

## ROOM FINISH LEGEND AND REMARKS

### LEGEND

#### FLOORS

TERRAZZO  
TER-1 SAND CUSHION TERRAZZO, MATCH EXISTING, SEE SPECIFICATIONS.

#### BASE

TERRAZZO  
TERB-1 SAND CUSHION TERRAZZO, MATCH EXISTING, SEE SPECIFICATIONS.

#### WALLS

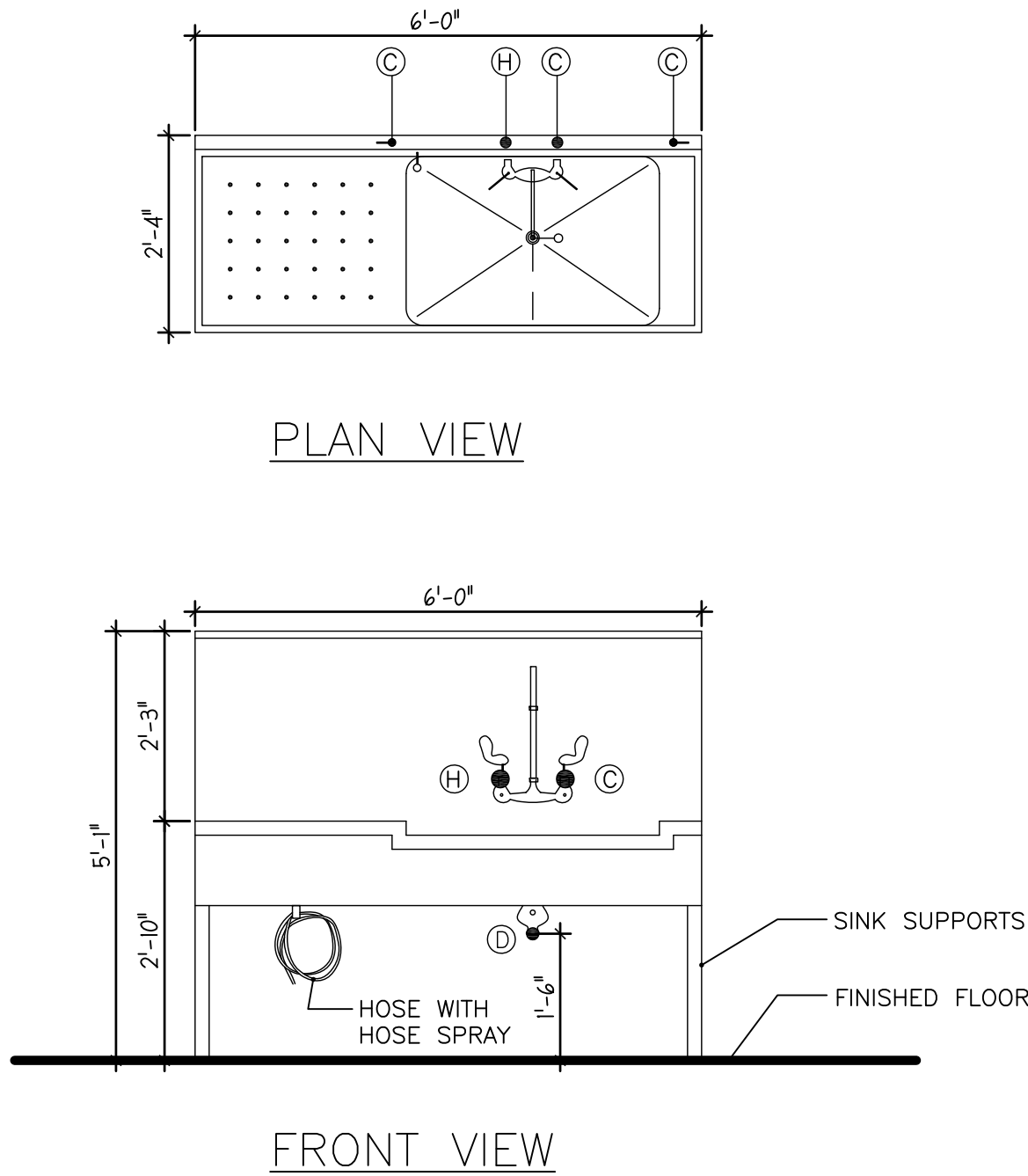
PAIN  
PT-1 BENJAMIN MOORE ECO SPEC WB INTERIOR LATEX EGGSHELL FINISH 374, OR APPROVED EQUAL, SEE SPECIFICATIONS.

#### CEILING

PAIN  
PT-1 BENJAMIN MOORE ECO SPEC WB INTERIOR LATEX EGGSHELL FINISH 374, OR APPROVED EQUAL, SEE SPECIFICATIONS.

#### REMARKS

1. SEE FLOOR PLAN FOR EXTENT OF FINISHES

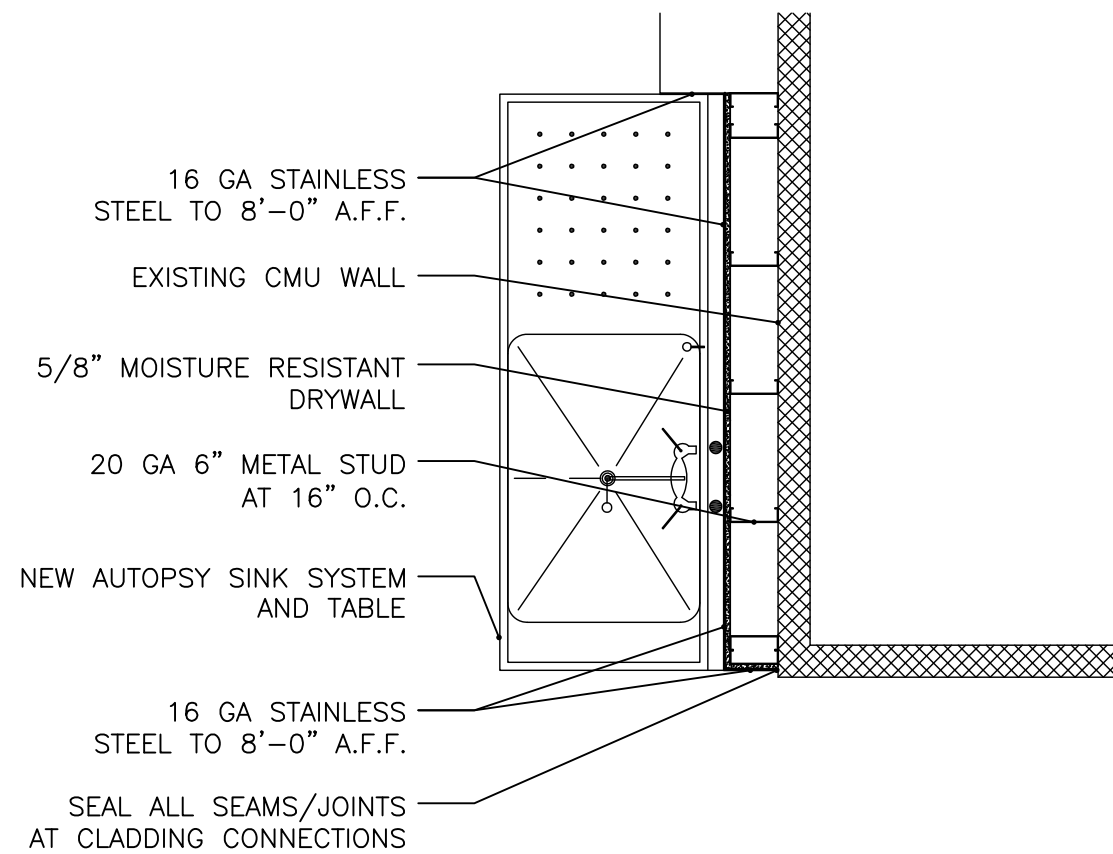


A1 SINK AUTOPSY (WALL MOUNTED)  
1/2" = 1'-0"

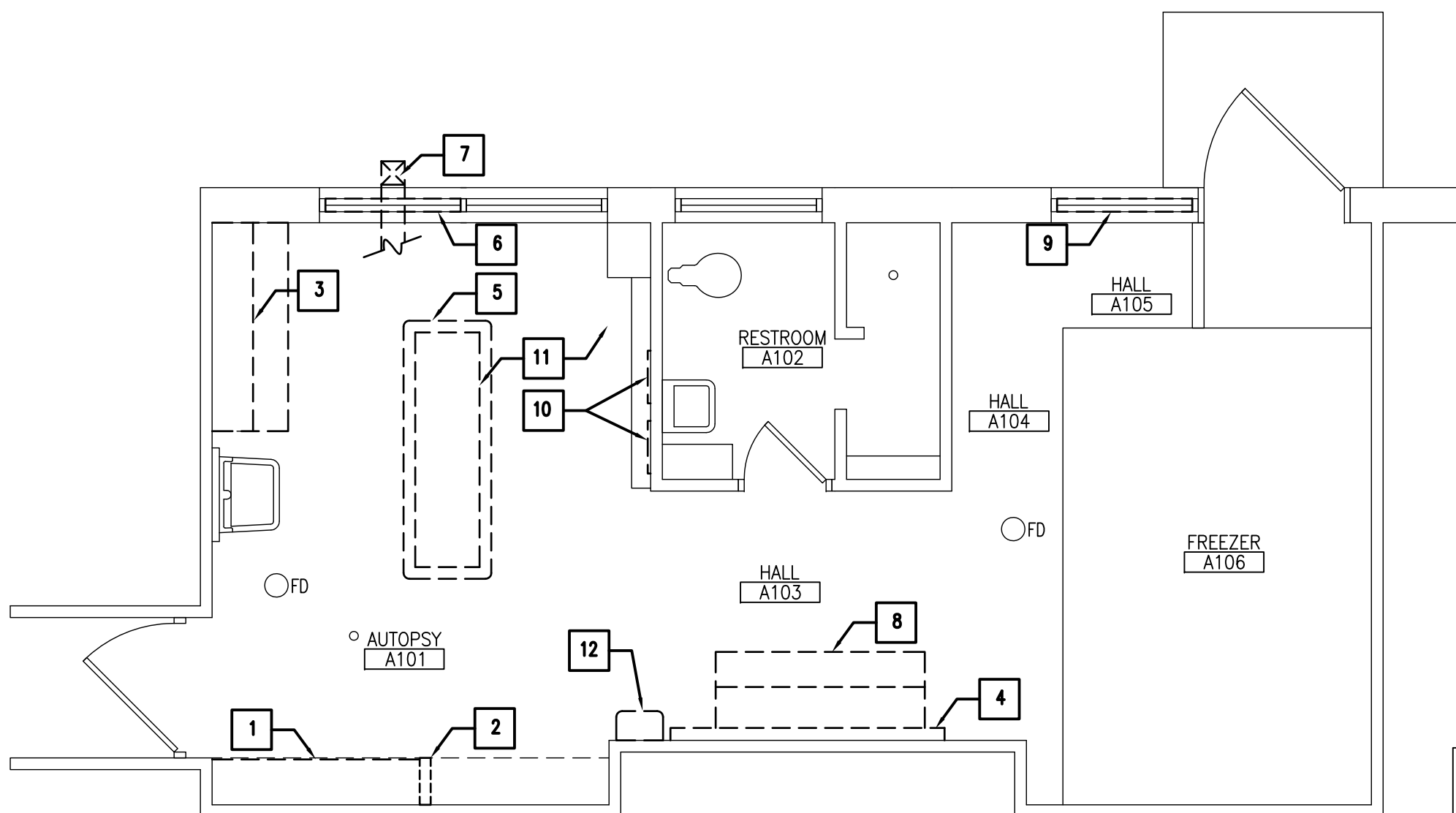
UTILITY REQUIREMENTS:  
(H) HOT WATER: 1/2"  
(C) COLD WATER: 1/2"  
(D) WASTE: 1/2"

NOTE:  
1. PROVIDE 10'-0" HOSE WITH HOSE SPRAY  
2. PROVIDE SUPPORTS FOR WALL MOUNTED SINK  
3. PROVIDE BARIATIC-TILTING AUTOPSY CART  
4. INCLUDE ALL LISTED OPTIONS WITH SINK:  
SINK PERIMETER RINSE ASSEMBLY  
SAFETY EYE WASH SPLASH MOUNT  
EXHAUST DUCT  
FLUORESCENT LIGHT ASSEMBLY  
SCALE STAND WALL MOUNT  
ORGAN RINSE BASKET  
EVIDENCE SCREEN  
DISPOSAL 1 H.P. HEAVY DUTY

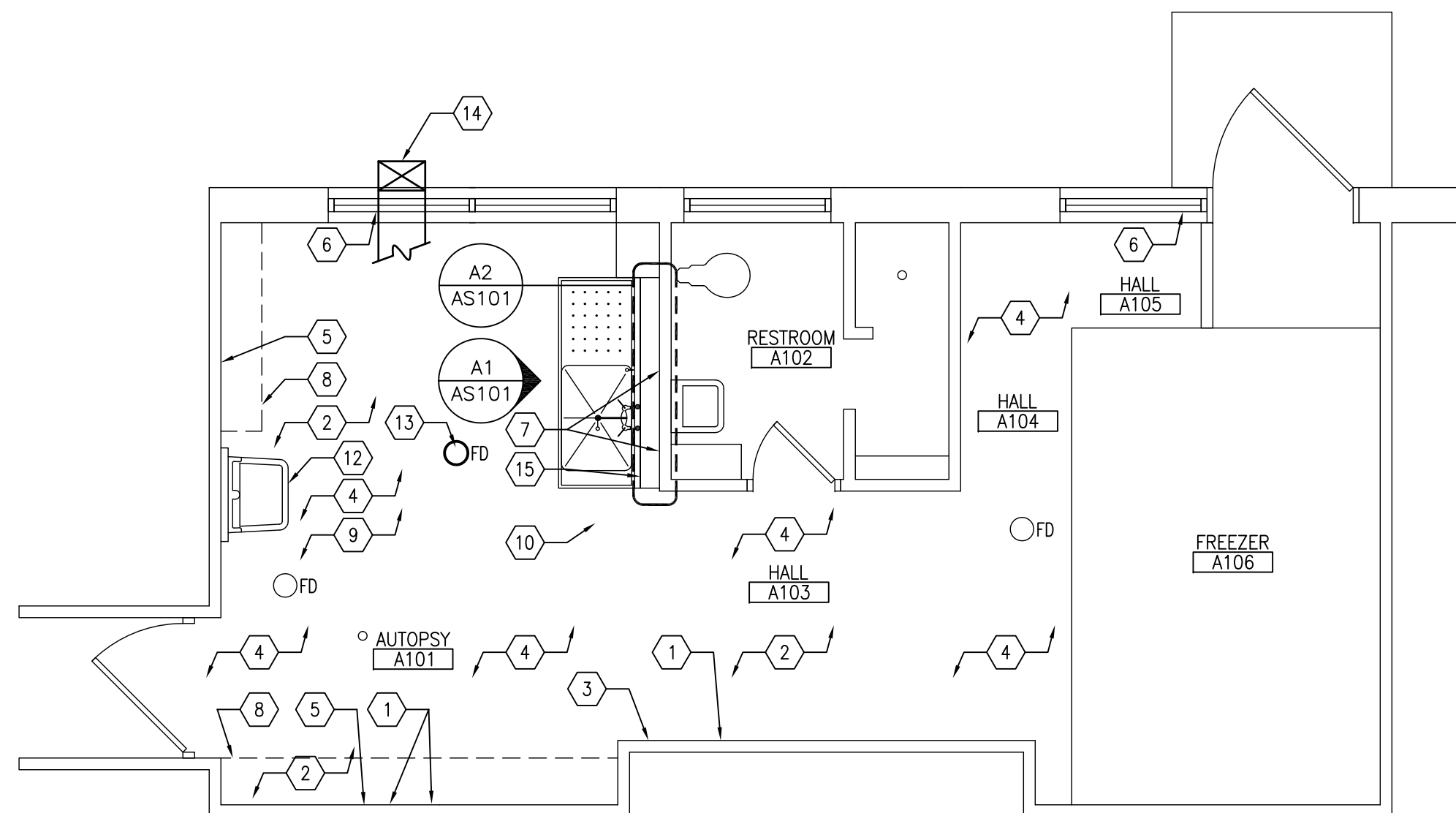
NOTE: GRAPHIC REPRESENTATION ONLY  
CONSULT MANUFACTURER'S LITERATURE  
FOR ACTUAL DIMENSIONS, CLEARANCE  
AND UTILITY REQUIREMENTS



A2 WALL DETAIL  
1/2" = 1'-0"



FIRST FLOOR DEMOLITION PLAN  
1/4" = 1'-0"



FIRST FLOOR PLAN  
1/4" = 1'-0"

NOTE:  
ONLY DEMO EXISTING CASEWORK AND EQUIPMENT IF NEW  
EQUIPMENT IS ACCEPTED FROM LIST OF ALTERNATES.

### LIST OF ALTERNATES

ALTERNATE A-1 (DEDUCT)  
PROVIDE THE COMPLETE COST FOR AUTOPSY SINK WALL MOUNT - RIGHT APPROACH AS SHOWN IN THE DRAWINGS. SEE DRAWINGS FOR ADDITIONAL INFORMATION.  
COST IS TO INCLUDE INSTALLATION AND ALL LISTED OPTIONS FOR AUTOPSY SINK WALL MOUNT:  
1. SINK PERIMETER RINSE ASSEMBLY  
2. SAFETY EYE WASH SPLASH MOUNT  
3. EXHAUST DUCT  
4. FLUORESCENT LIGHT ASSEMBLY  
5. SCALE STAND WALL MOUNT  
6. ORGAN RINSE BASKET  
7. EVIDENCE SCREEN  
8. DISPOSAL 1 H.P. HEAVY DUTY  
ALTERNATE A-2 (DEDUCT)  
PROVIDE THE COMPLETE COST FOR BARIATIC-TILTING AUTOPSY CART, MOBILE, NOT SHOWN ON PLAN, SEE DRAWINGS FOR ADDITIONAL INFORMATION.  
ALTERNATE A-3 (DEDUCT)  
PROVIDE THE COMPLETE COST TO PUR OUT EAST WALL OF AUTOPSY ROOM A101 WITH 6" METAL STUDS AND 5/8" MOISTURE RESISTANT DRYWALL, AS SHOWN ON SHEET AS101. SEE DRAWINGS AND SPECIFICATIONS FOR ADDITIONAL INFORMATION.

EQUIPMENT SCHEDULE			
QTY	NAME	DESCRIPTION	SIZE
1	AUTOPSY SINK	WALL MOUNTED AUTOPSY SINK WITH: A SINK TO CART LATCHING MECHANISM; CABINET TO CONTAIN ALL PLUMBING AND BUILT IN SERVICES SUCH AS IRRIGATION HOSE WITH MIXING VALVE; DUPLEX ELECTRICAL OUTLETS; SINK WITH SWING FAUCET SPOUT AND WREST BLADES; A SPECIMEN BASKET TO HANG IN SINK WITH REMOVABLE SWING DRAIN; FLUORESCENT LIGHT ASSEMBLY; HYDRO-ASPIRATOR; REMOVABLE GRID PLATES; INTEGRATED SINK; WATER FIXTURE WITH HOT AND COLD; HAND SPRAY ASSEMBLY; HEAVY DUTY COMMERCIAL WASTE DISPOSAL 1HP; BUILT-IN EXHAUST SYSTEM. ALL PLUMBING SHALL HAVE VACUUM BREAKERS	72"W x 28"D x 72"H
1	AUTOPSY CART	AUTOPSY CART WITH: CONSTRUCTED OF STAINLESS STEEL; HEIGHT ADJUSTABLE OPERATED BY A HAND CRANK; POLISHED TO A SMOOTH FINISH WITHOUT CREVICES, LAPPED EDGES, RIVETS OR BOLTS; LATCHING MECHANISM TO ATTACHE TO THE AUTOPSY SINK FOR DISSECTION AND DRAWING; TABLE SHALL TILT; SHALL BE BETWEEN 28" AND 32" WIDE; AT LEAST 8" HEAVY DUTY LOCKABLE CASTERS; DESIGN LOAD OF AT LEAST 500LBS.	80"W x 32"D x 35"H

### CONSULTANTS:

### ARCHITECT/ENGINEERS:

2020 E. Washington Boulevard  
Suite 200  
Fort Wayne, Indiana 46803  
PH: 260.424.4830  
www.viridian-design.net

All Concepts, ideas, design elements, plans, and details as shown on this document are the sole property of Viridian Architectural Design Inc. and shall not be used for any purpose without prior expressed written consent. The Owner shall be permitted to retain copies for information and reference.

Drawing Title  
ARCHITECTURAL-FLOOR-PLANS

Approved Project Director

Project Title  
VA MORGUE VENTILATION

Location  
FORT WAYNE, INDIANA

Date  
04/03/2012

Checked  
TWT

Drawn  
ETT

Project Number  
610A4-01-104

Building Number  
1

Drawing Number  
AS101.1

Dwg. SHT2of 10

Office of  
Construction  
and Facilities  
Management

Department of  
Veterans Affairs