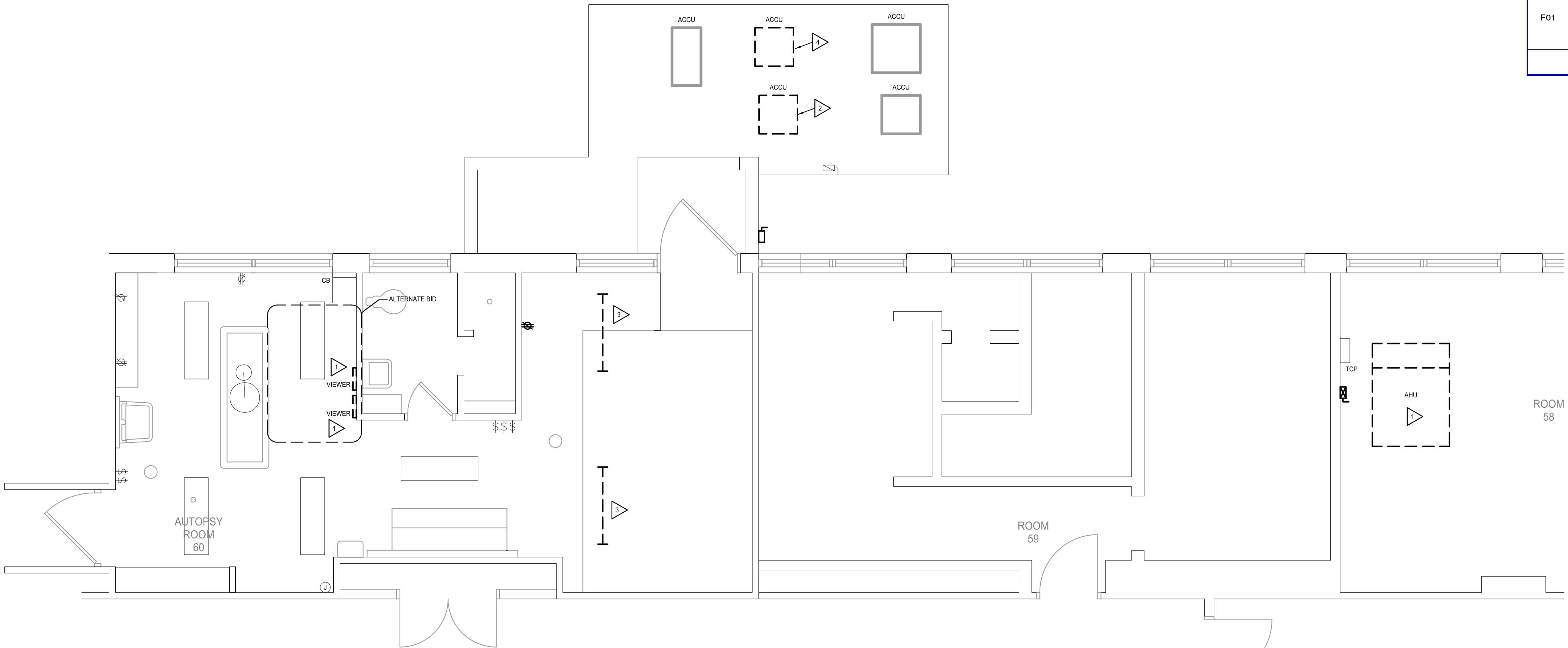


three inches = one foot
one and one half inches = one foot
one inch = one foot
three quarters inch = one foot
one half inch = one foot
three eighths inch = one foot
one quarter inch = one foot
one eighth inch = one foot

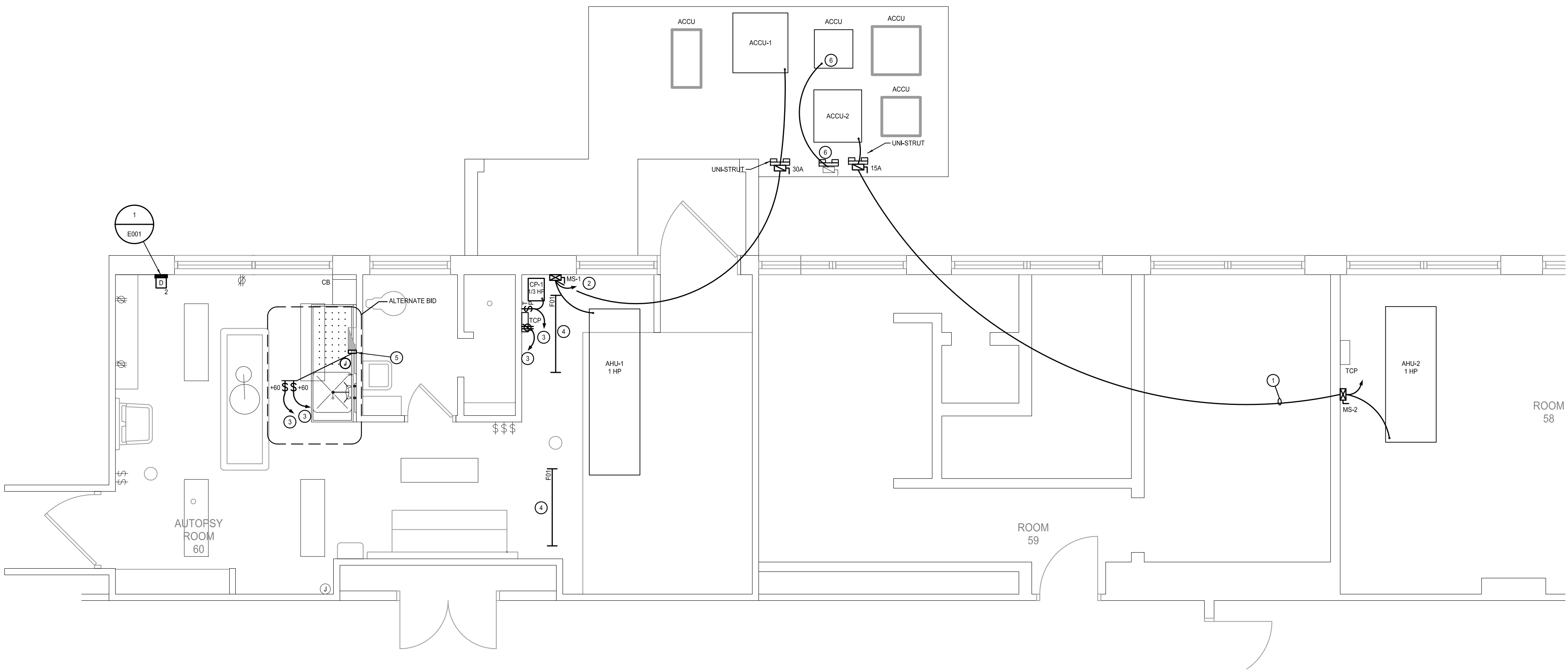
- ELECTRICAL DEMOLITION PLAN NOTES**
- DISCONNECT AND REMOVE ELECTRICAL SERVICE, DISCONNECTS, ETC. AND CONDUIT AND CONDUCTORS BACK TO THE SOURCE ASSOCIATED WITH EQUIPMENT TO BE REMOVED.
 - DISCONNECT AND REMOVE ELECTRICAL SERVICE DISCONNECTS, ETC. EXTEND CONDUIT AND CONDUCTORS TO NEW ACCU-2 AND TERMINATE AS REQUIRED.
 - REMOVE EXISTING LIGHTING FIXTURES AND PREPARE TO RELOCATE EXISTING CONDUIT AND CONDUCTORS (CIRCUIT) AS REQUIRED FOR NEW LOCATION OF NEW LIGHTING FIXTURES. PATCH AND PAINT EXISTING HAND CEILING AS REQUIRED FOR NEW LOCATION OF CIRCUIT TO MATCH EXISTING.
 - ACCU UNIT TO BE RELOCATED TO THE EAST. DISCONNECT AND PREPARE TO RECONNECT TO NEW LOCATION.

- ELECTRICAL PLAN NOTES**
- ROUTE 3/4" C, 3#12, 1#12G TO THE NEW ACCU-2 AND TERMINATE TO THE EXISTING FEEDER CIRCUIT (PP-A-11). FIELD VERIFY EXISTING CONDUIT AND CONDUCTOR SIZES PRIOR TO BID.
 - ROUTE 3/4" C, 3#8, 1#10G TO A NEW 40A/3P CB LOCATED IN PANEL EQ-PP-B-19 (21.23) AND TERMINATE AS REQUIRED. FIELD VERIFY MANUFACTURER, FRAME SIZE, AND KVAIC RATING FOR NEW CB PRIOR TO BID.
 - ROUTE 3/4" C, 2#12, 1#12G TO A NEW 20A/1P CB LOCATED IN PANEL EQ-PP-B-14 (EQ-PP-B-16) AND TERMINATE AS REQUIRED. FIELD VERIFY MANUFACTURER, FRAME SIZE, AND KVAIC RATING FOR NEW CB PRIOR TO BID.
 - NEW LOCATION FOR NEW LIGHT FIXTURE(F01). EXTEND EXISTING CONDUIT AND CONDUCTORS AND TERMINATE AS REQUIRED.
 - INSTALL 20A SNAP SWITCH WITH PILOT LIGHT IN CHASE PROVIDED BY MECHANICAL CONTRACTOR. ELECTRICAL CONTRACTOR SHALL UTILIZE CHASE TO ROUTE BRANCH CIRCUITS SERVING AUTOPSY SINK.
 - NEW LOCATION OF EXISTING ACCU. PROVIDE AND INSTALL NEW CONDUCTORS FROM EXISTING DISCONNECT TO ACCU AND REWORK CONDUIT AS REQUIRED. FIELD VERIFY CONDUCTOR SIZE.

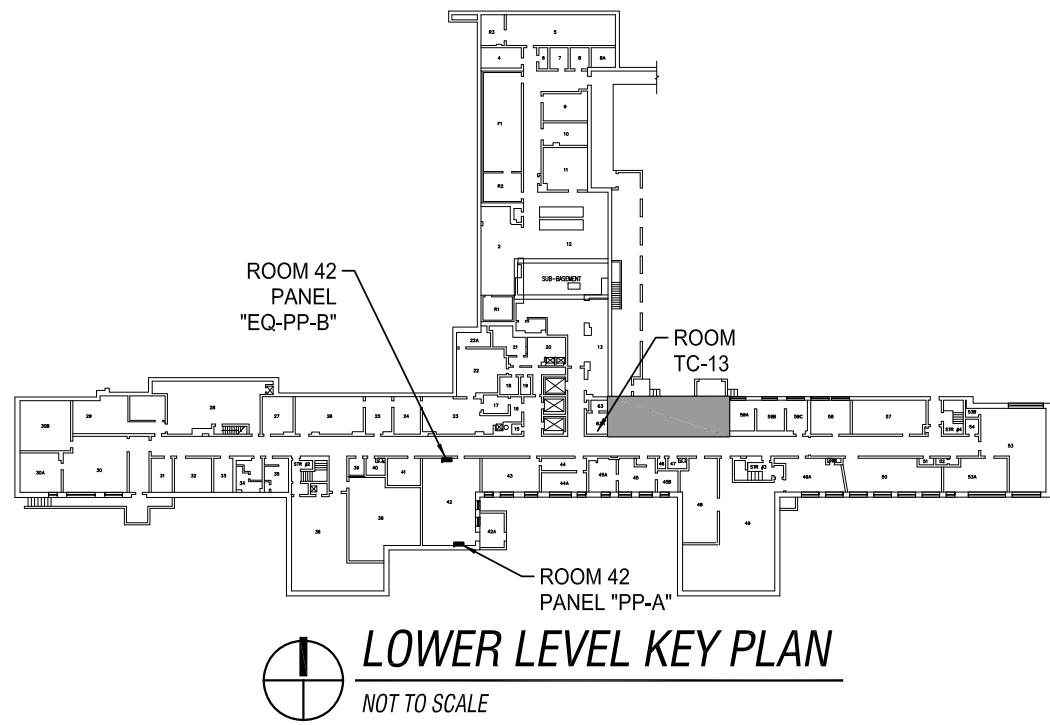
LIGHT FIXTURE SCHEDULE				
TAG	MOUNT	LAMPS	INPUT WATTS	REMARKS
F01	SURFACE	(2) 32W 4100K 85 CRI LOW MERC	62	120/277V, SURFACE PRISMATIC WRAP FIXTURES WITH WIDE BODY MINIMUM 10" WIDE. DEPTH SHALL BE MAXIMUM 3" AND NOMINAL 48" IN LENGTH. MADE OF DIE FORMED STEEL, PAINTED AFTER FABRICATION. LENS TO BE 100% VIRGIN PRISMATIC INJECTION MOLDED WITH LOW BRIGHTNESS. UNIVERSAL VOLTAGE PROGRAM START ELECTRONIC BALLAST LESS THAN 10% THD.



ELECTRICAL DEMOLITION PLAN
SCALE: 1/4"=1'-0"



LOWER LEVEL ELECTRICAL PLAN
SCALE: 1/4"=1'-0"



LOWER LEVEL KEY PLAN
NOT TO SCALE

Revisions:	Date:	CONSULTANTS:	ARCHITECT/ENGINEERS: PRIMARY ENGINEERING, INC. Fort Wayne 2828 Lake Ave. Fort Wayne, Indiana 46805 260.424.0444 ph 260.424.1444 fax info@primary-eng.com www.primary-eng.com PRIMARY JOB # 09252	Drawing Title BASEMENT LEVEL ELECTRICAL PLAN Approved Project Director	Project Title VA MORGUE VENTILATION Location FORT WAYNE INDIANA Date 02/08/2012 Checked CUB Drawn CUB	Project Number 610A4-01-104 Building Number 1 Drawing Number E201 Dwg SHT9 of 10	Office of Construction and Facilities Management Department of Veterans Affairs
------------	-------	--------------	--	---	--	---	--