

H:\BMA Projects\VA Medical Center Bldg 01 - White River JCT\Sheets\CD\A-202.dwg, 7/27/2012 2:42:08 PM, 30x42, 1:1

A

B

C

D

E

F

A

B

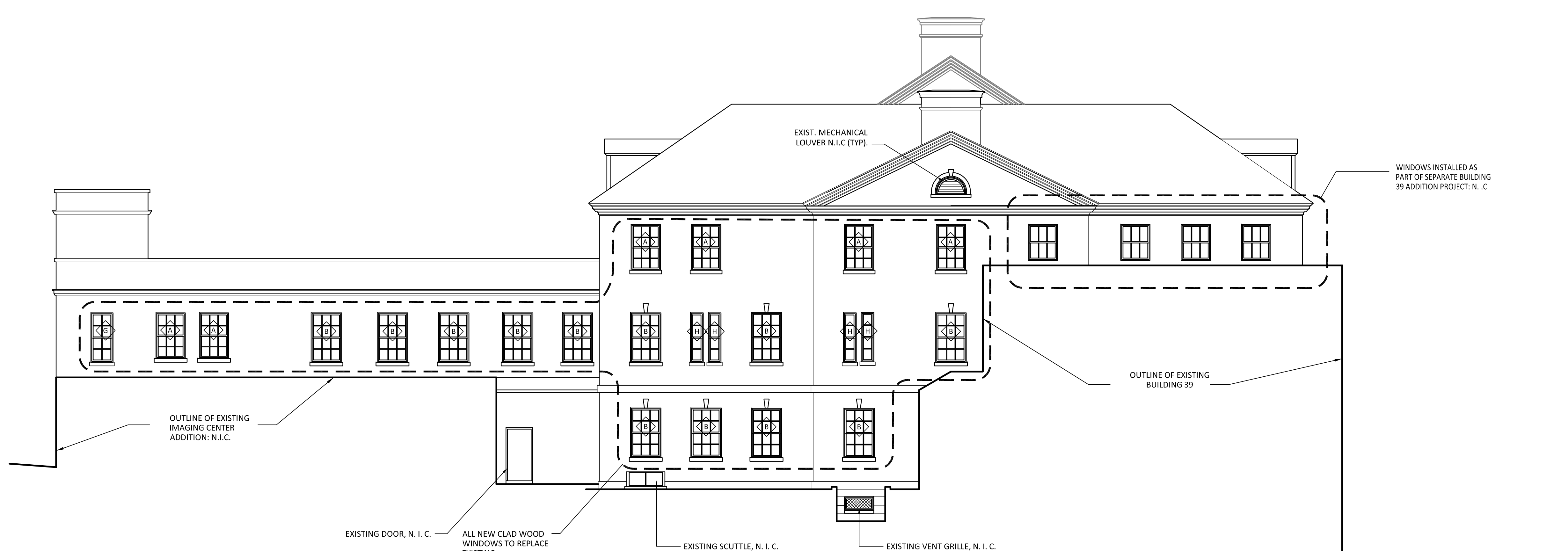
C

D

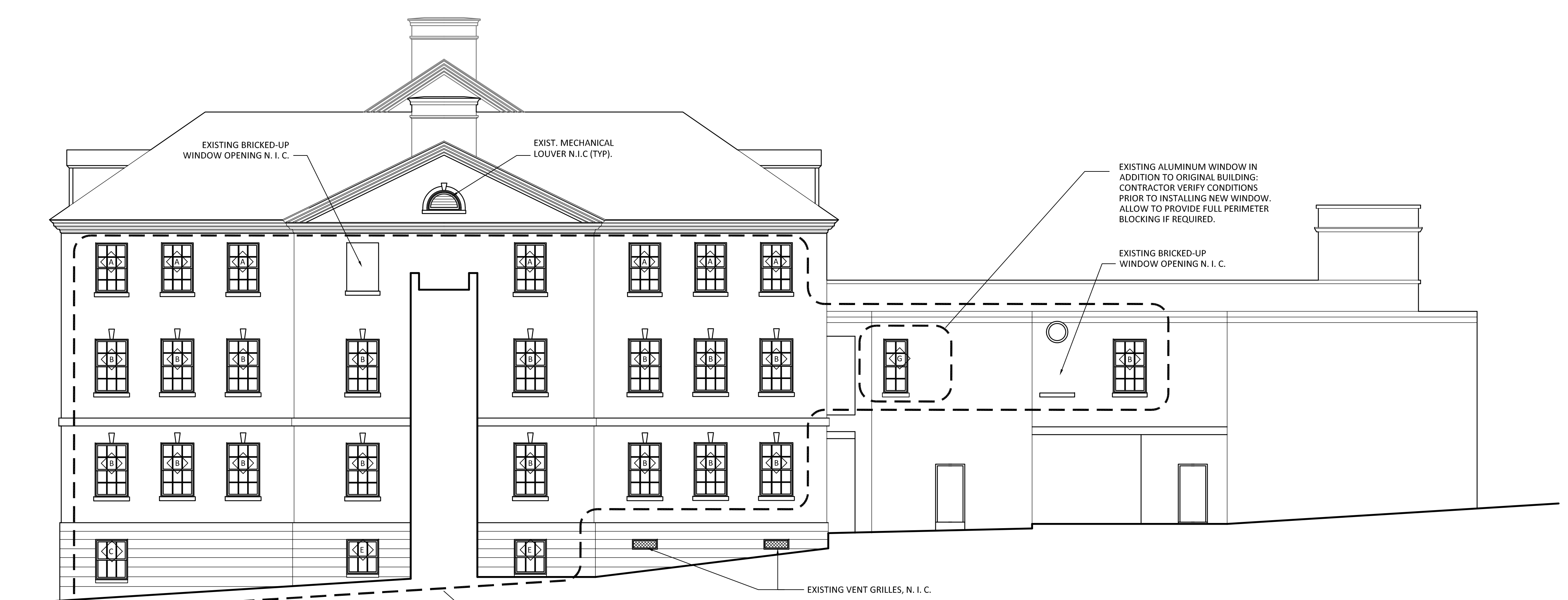
E

F

0 6" three inches = one foot
0 6" one and one half inches = one foot
0 6" one inch = one foot
0 6" three quarters inch = one foot
0 6" one half inch = one foot
0 4" three eighths inch = one foot
0 8" one quarter inch = one foot
0 16" one eighth inch = one foot



1 WEST ELEVATION
A-202 1/8" = 1'-0"



2 EAST ELEVATION
A-202 1/8" = 1'-0"

FINAL FOR CONSTRUCTION

		ARCHITECT: BMA ARCHITECTS ■ PLANNERS 103 Wales Street, Rutland VT 05701 Ph: 802.773.8245 Fx: 802.773.8235 210 South Street, Bennington VT 05201 Ph: 802.445.7170 Fx: 802.445.7175 Toll Free: 800.754.9056 www.bma-architects.com		 Professional Seal				Drawing Title EAST & WEST ELEVATIONS		Project Title WRJ VAMC BLDG. 1 WINDOW REPLACEMENT		Date MAY 02, 2011		 VAMC, WHITE RIVER JUNCTION		Department of Veterans Affairs VA			
Revisions		Date				Approved: Project Manager		Building Number 1		Checked		Drawn						Project No. 405-09-114	
						Approved: Service Chief		Location VAMC, WHITE RIVER JUNCTION V.T.				Drawing No. A-202							